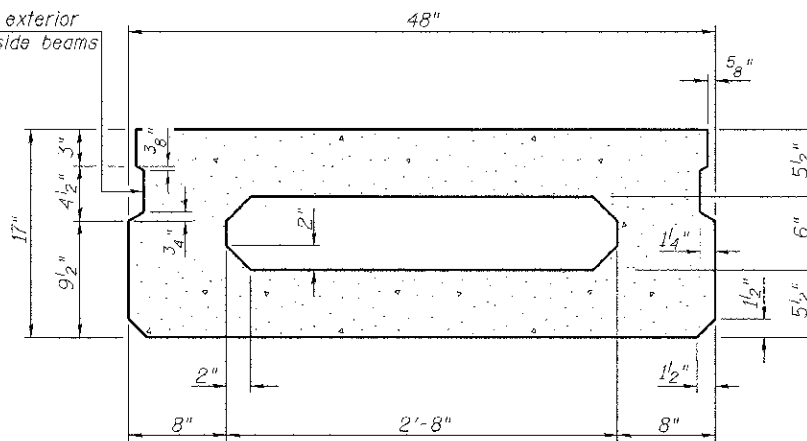
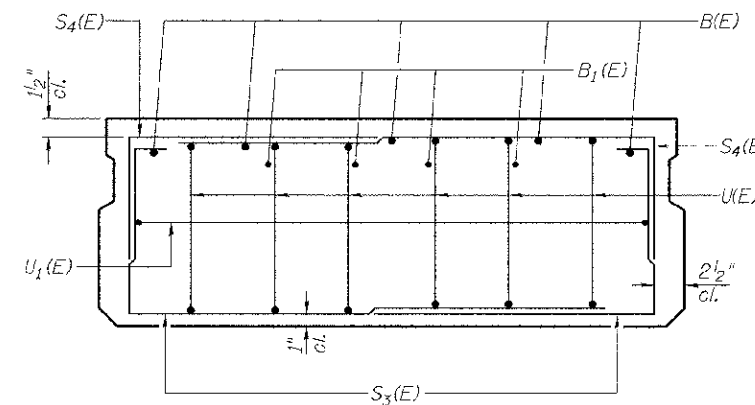


**SECTION C-C**



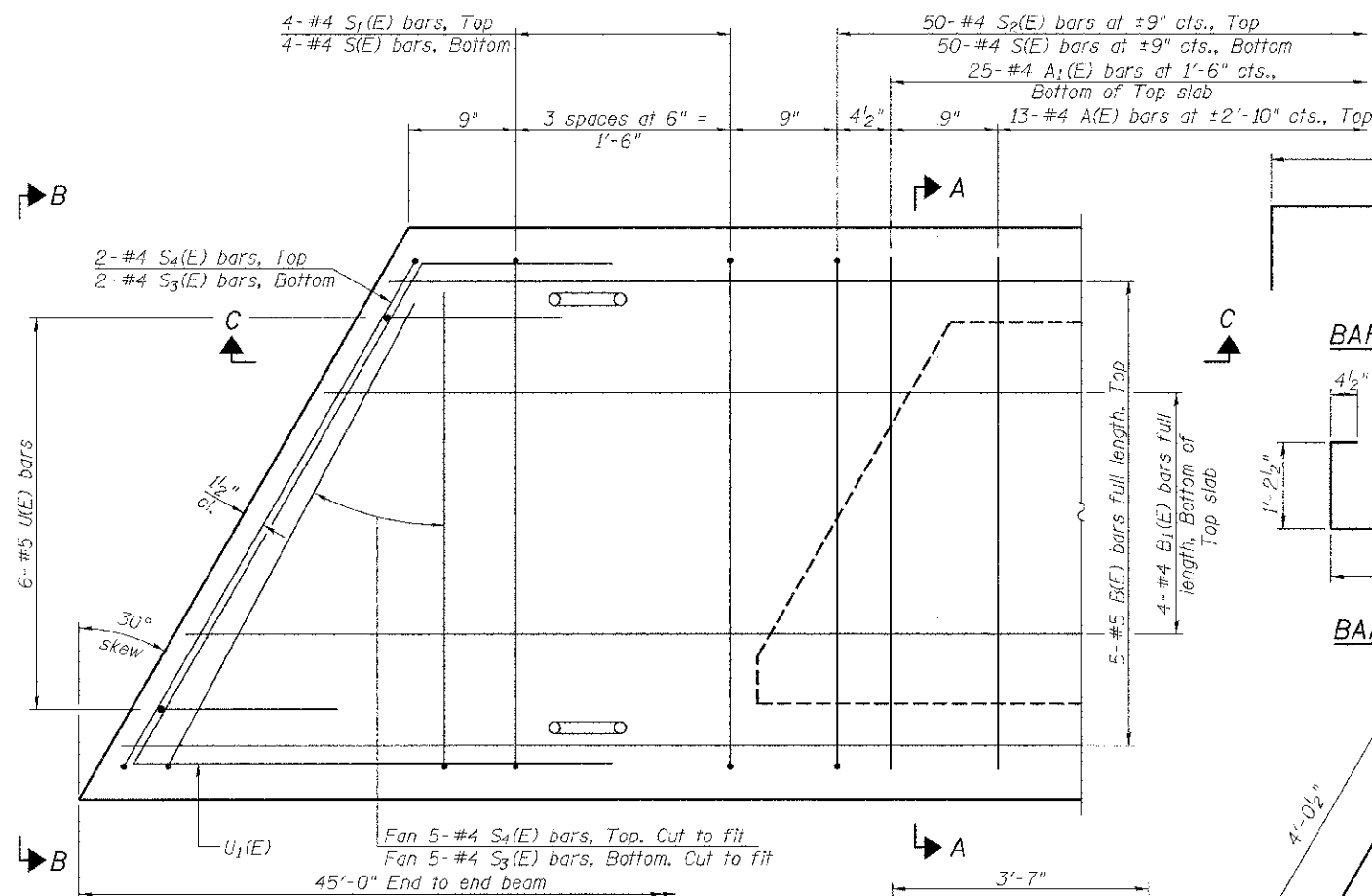
**SECTION A-A**  
(Showing dimensions)



**VIEW B-B**

\*\* Omit key on exterior face of outside beams

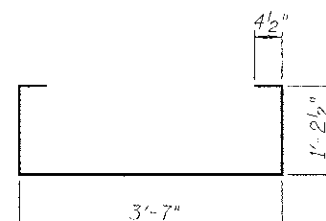
\*\* Rail post anchor devices (Sheet 6 of 12) to be cast into exterior face of outside beams.



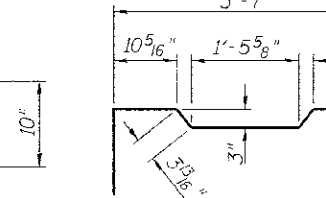
**PLAN VIEW**

Note: Spacing of S(E) and S2(E) bars may be adjusted up to 4" in the immediate area of the transverse tie diaphragms to miss the block outs for the transverse ties.

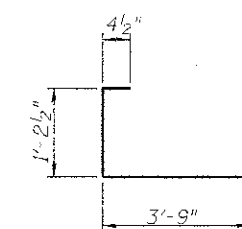
**MINIMUM BAR LAP**  
#4 bar = 2'-0"  
#5 bar = 2'-6"



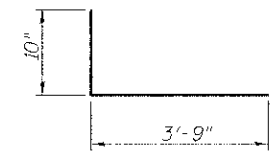
**BAR S1(E)**



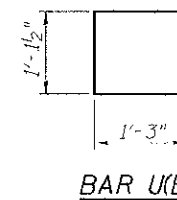
**BAR S2(E)**



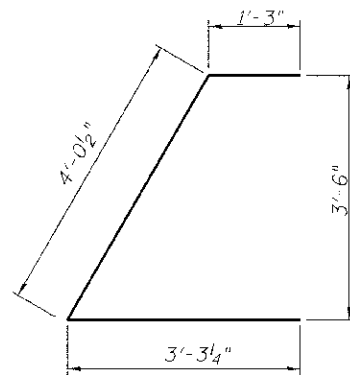
**BAR S3(E)**



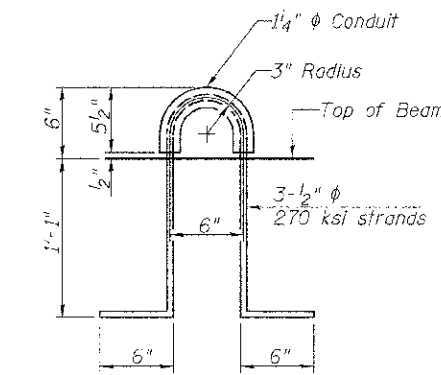
**BAR S4(E)**



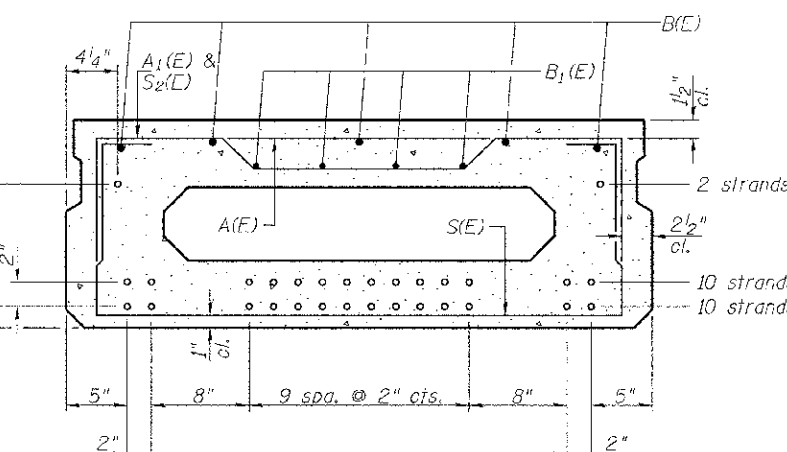
**BAR U1(E)**



**BAR U1(E)**



**LIFTING LOOP DETAIL**



**SECTION A-A**

22-1/2"  $\phi$  Strands Each Strand Stressed to 30,900 Lbs.  
10-Strands 1 3/4" up, 10-Strands 3 3/4" up, 2-Strands 11 3/4" up  
Note: Place the number of strands specified in each row symmetrically about the centerline of beam in the permissible strand locations shown.

**BAR LIST-ONE BEAM ONLY**  
(For information only)

Bar	No.	Size	Length	Shape
A(E)	13	#4	3'-7"	—
A1(E)	25	#4	3'-10"	—
B(E)	5	#5	*44'-9"	—
B1(E)	4	#4	*44'-9"	—
S(E)	61	#4	6'-9"	U
S1(E)	8	#4	5'-3"	U
S2(E)	50	#4	5'-6"	U
S3(E)	14	#4	5'-9"	U
S4(E)	14	#4	5'-0"	U
U(E)	12	#5	3'-8"	U
U1(E)	2	#4	8'-7"	L

\*Total Length, Lap as Necessary.

Note: See sheet 4 of 12 for additional details and Bill of Material.

**SUPERSTRUCTURE DETAILS - SPAN 2**  
**BROWN COUNTY**  
**SECTION 10-04118-00-BR**  
**T.R. 141 OVER WELLS FORK**

SHEET NO. 5 12 SHEETS	ROUTE NO. TR 141	SECTION 10-04118-00-BR	COUNTY BROWN	TOTAL SHEETS 24	SHEET NO. 11
	S.N. 005-3407		CONTRACT NO. 93588		
FED. ROAD DIST. NO. 7		ILLINOIS	FED. AID PROJECT BROS-0009(221)		