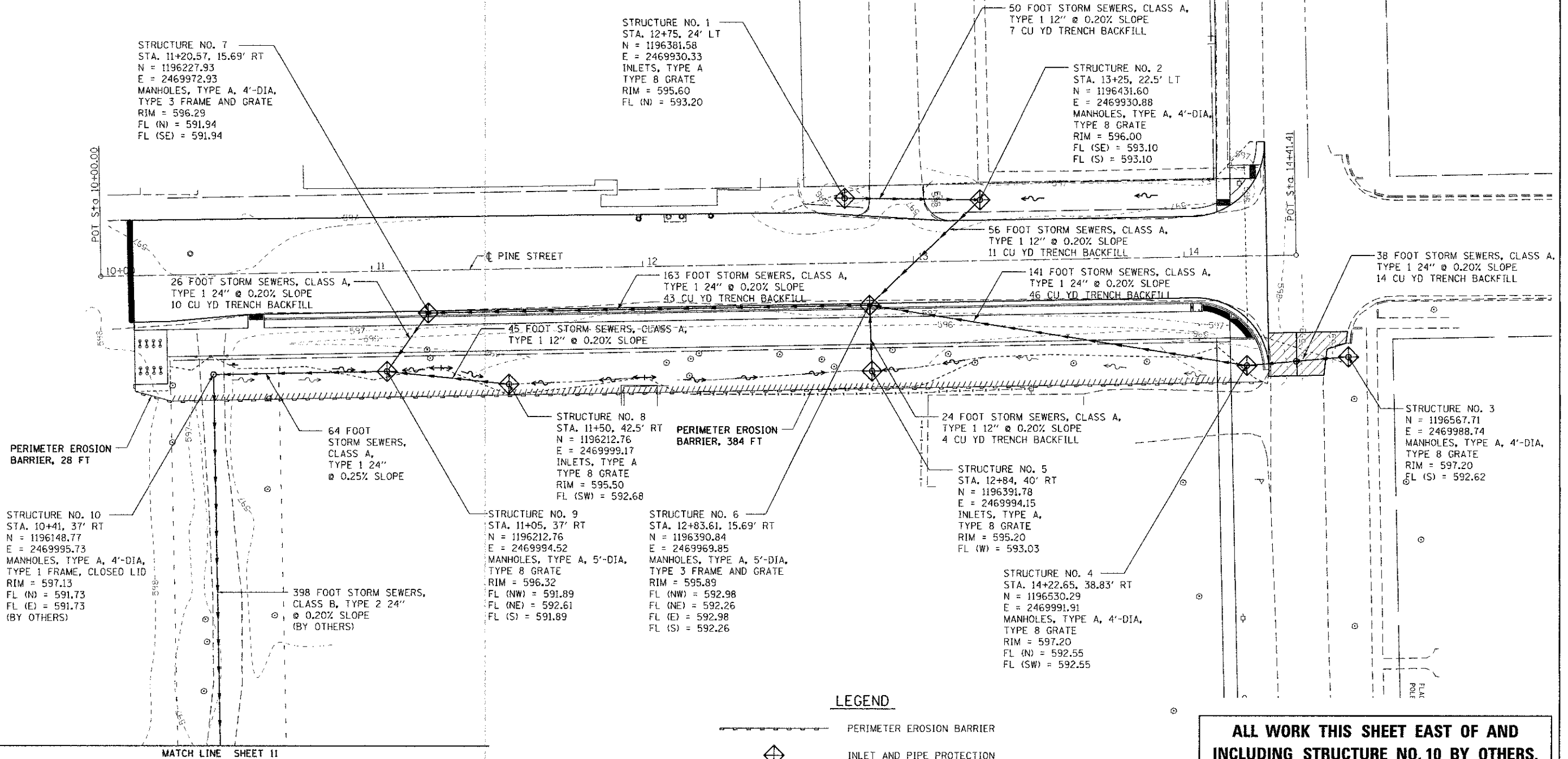


PINE STREET CENTERLINE ALIGNMENT

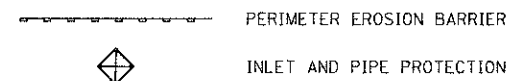
STA. 10+00.00 N 1,196,107.08 E 2,469,959.51
 STA. 14+41.41 N 1,196,548.41 E 2,469,951.19

TIE POINT #1
 STA. 10+50.83, 24.29' LT.
 PK NAIL
 N 1,196,157.44
 E 2,469,934.27

TIE POINT #2
 STA. 14+07.94, 15.37' LT.
 IRON PIN W/ BLUE CAP
 N 1,196,514.66
 E 2,469,936.45



LEGEND



ALL WORK THIS SHEET EAST OF AND INCLUDING STRUCTURE NO. 10 BY OTHERS. FOR INFORMATION ONLY.

FILE NAME = 11-01-04-shr-stormsewer-F10.dgn
 USER = msheard
 PLOT DRIVER = PLOTDRIVER22x34.plt



USER NAME = msheard	DESIGNED - KLK	REVISED - 05/21/12-MDS-IDOT REVIEW
FILE NAME = 11-01-04-shr-stormsewer-F10.dgn	DRAWN - MDS	REVISED - 09/24/12-MDS-IDOT REVIEW
PLOT SCALE = 20,000 / 1"	CHECKED - KLK	REVISED -
PLOT DATE = 9/26/2012	DATE - 05/21/12	REVISED -

**VILLAGE OF WILLIAMSVILLE
 SAFE ROUTES TO SCHOOL**

**GENERAL PLAN
 STORM SEWER**

SCALE: 1"=20' SHEET NO. 1 OF 2 SHEETS STA. TO STA.

F.A. RTE.	SECTION	COUNTY	TOTAL SHEETS	SHEET NO.
	09-00006-00-SW	SANGAMON	20	9
CONTRACT NO. 93589			ILLINOIS FED. AID PROJECT	