

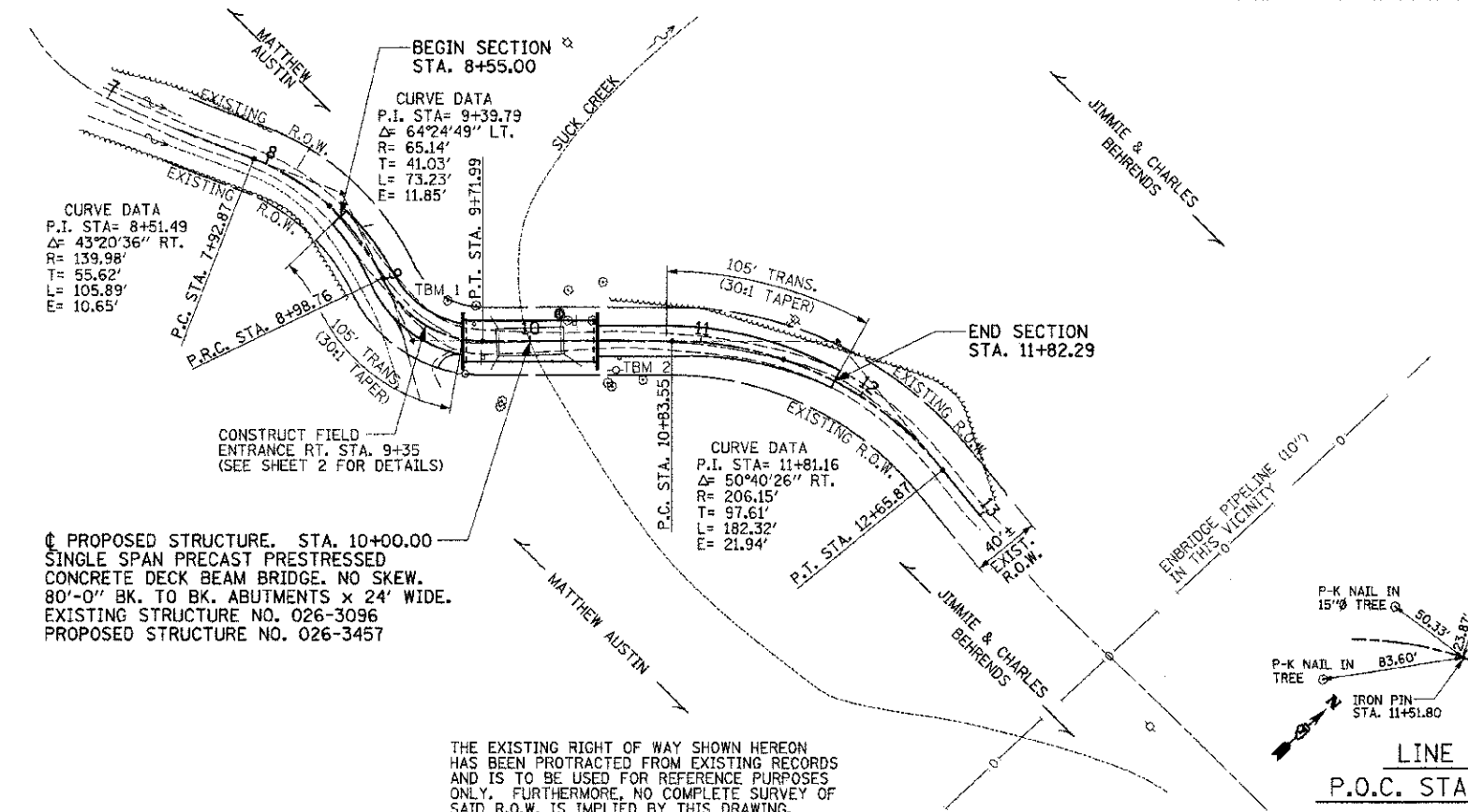
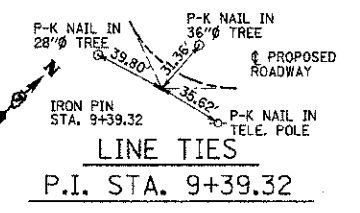
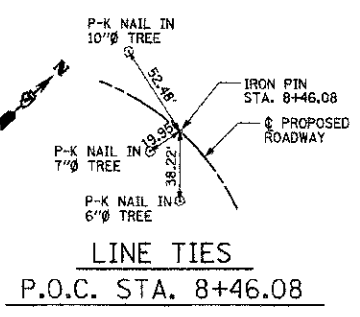
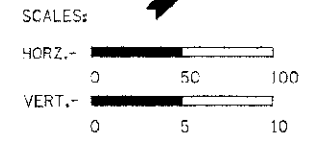
EXISTING STRUCTURE: SINGLE SPAN TIMBER DECK BRIDGE WITH RUNNERS ON STEEL STRINGERS SUPPORTED ON CLOSED TIMBER BACKED STEEL PILE ABUTMENTS. 40' x 16' W. NO SKEW. TO BE REMOVED. SEE SPECIAL PROVISIONS FOR SALVAGE.

EARTHWORK SCHEDULE				
LOCATION	EARTH EXCAVATION CU. YD.	EARTH EXCAVATION ADJUSTED FOR SHRINKAGE* CU. YD.	EMBANKMENT CU. YD.	EARTHWORK BALANCE** WASTE (+) OR SHORTAGE (-) CU. YD.
STA. 8+55.00 TO STA. 9+60.00	19	15	21	-6
STA. 10+40.00 TO STA. 11+82.29	0	0	313	-313
F.E. RT., STA. 9+35 (ASSUMED)	0	0	13	-13
TOTAL	19	15	347	-332

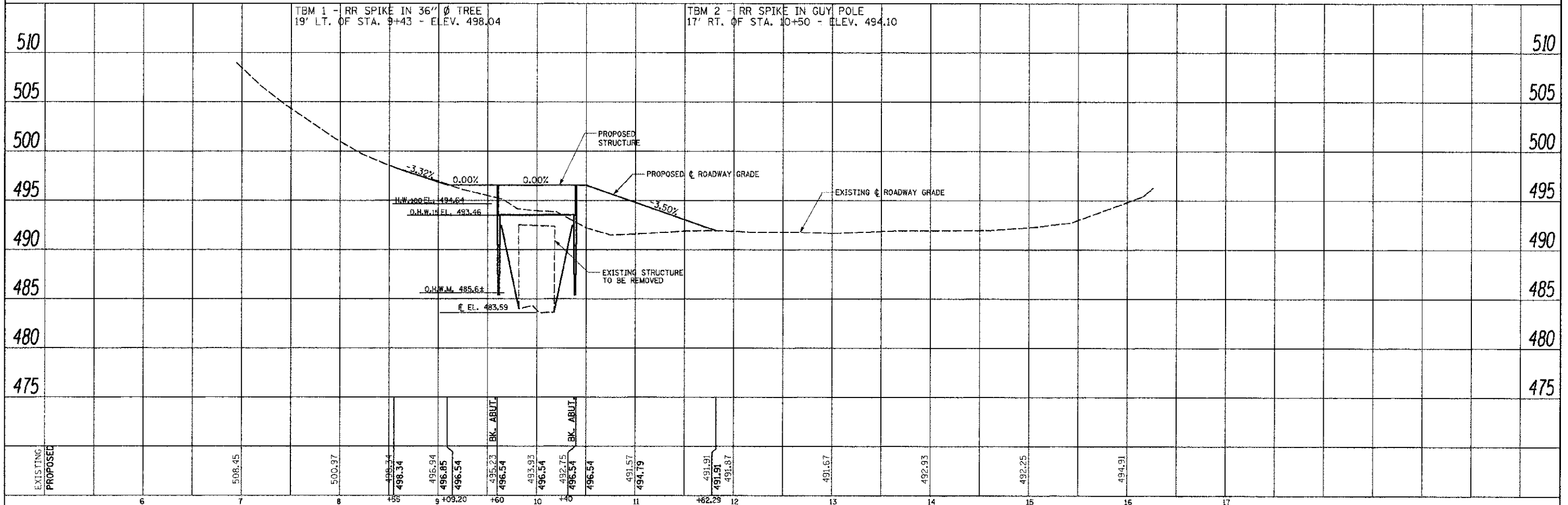
*25% SHRINKAGE
FURNISHED EXCAVATION

TREE REMOVAL (6 TO 15 UNITS DIAMETER)	
LOCATION	UNIT
STA. 10+17, 16' LT.	15"
STA. 10+17, 17' LT.	12"
STA. 10+18, 15' LT.	12"
STA. 10+22, 12' LT.	15"
STA. 10+37, 12' LT.	12"
TOTAL	66"

TREE REMOVAL (OVER 15 UNITS DIAMETER)	
LOCATION	UNIT
STA. 9+42, 19' LT.	36"
TOTAL	36"



THE EXISTING RIGHT OF WAY SHOWN HEREON HAS BEEN PROTRACTED FROM EXISTING RECORDS AND IS TO BE USED FOR REFERENCE PURPOSES ONLY. FURTHERMORE, NO COMPLETE SURVEY OF SAID R.O.W. IS IMPLIED BY THIS DRAWING.



DATE	BY	REVISIONS

DATE	BY	REVISIONS

RHUTASEL and ASSOCIATES, INC.
CONSULTING ENGINEERS • LAND SURVEYORS
CENTRALIA, ILLINOIS FREEBURG, ILLINOIS
ILLINOIS DESIGN FIRM LICENSE NO. 164-00267

DESIGNED - BLT	REVISED -
DRAWN - JN	REVISED -
CHECKED - GLH	REVISED -
DATE - 12/20/2012	REVISED -

STATE OF ILLINOIS
DEPARTMENT OF TRANSPORTATION

PLAN AND PROFILE OF ROADWAY
STRUCTURE NO. 026-3457
STA. 7+00 TO STA. 16+00

ROUTE	SECTION	COUNTY	TOTAL SHEET NO.
TR 221	11-13133-00-BR	FAYETTE	11 3
RAAI JOB NO. 50912 [ILLINOIS] FED. AID PROJECT			CONTRACT NO. 95698