

ROBERT BEHL AND DONALD STROHL

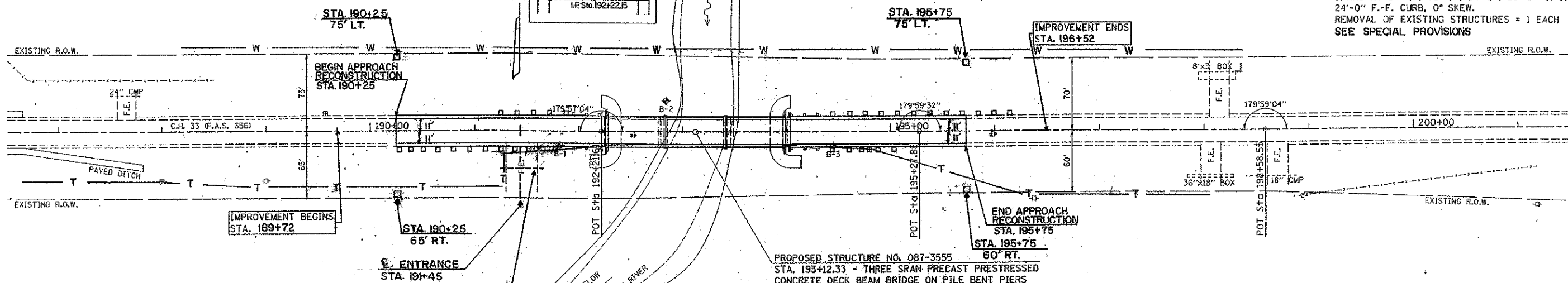
SW. 1/4 SEC. 11, T. 10 N., R. 6 E., 3RD P.M.

FRANCIS AND JOHN LUEDKE

EXISTING STRUCTURE NO. 087-3014

STA. 193+12.33 - THREE SPAN, NON-COMPOSITE CONTINUOUS STEEL I-BEAM BRIDGE ON OPEN INDIVIDUALLY ENCASED STEEL PILE BENT PIERS AND SPILL THRU STEEL PILE ABUTMENTS WITH 4" CONCRETE SLOPEWALL; 182'-0" BK.-BK. ABUTS. SPANS AT 54'-3", 70'-0", 54'-3", 28'-0" O.-O. DECK, 24'-0" F.-F. CURB, 0° SKEW. REMOVAL OF EXISTING STRUCTURES = 1 EACH SEE SPECIAL PROVISIONS

DATE	
BY	
REVISIONS	
NO.	
DESCRIPTION	
DATE	
BY	
NO.	
DESCRIPTION	
DATE	
BY	
NO.	
DESCRIPTION	

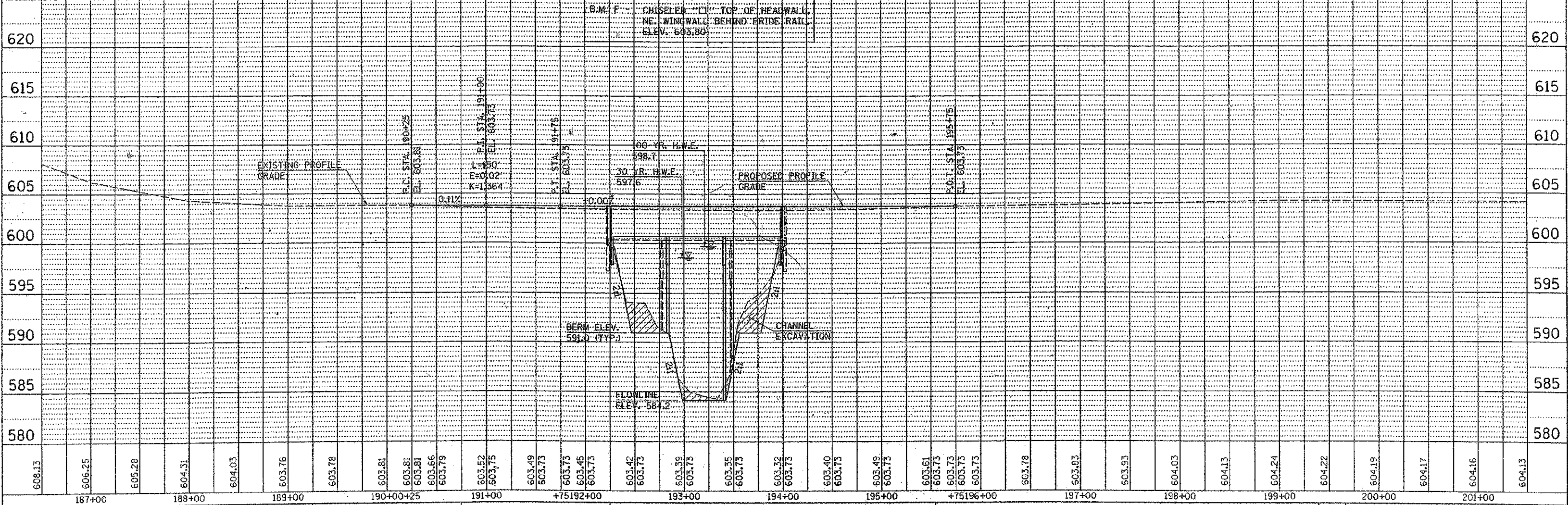
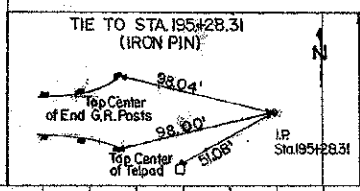
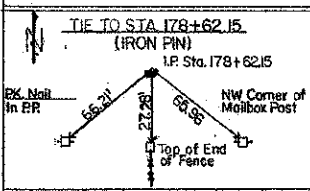


PROPOSED STRUCTURE NO. 087-3555  
 STA. 193+12.33 - THREE SPAN PRECAST PRESTRESSED CONCRETE DECK BEAM BRIDGE ON PILE BENT PIERS AND ABUTMENTS, 173'-6" BK.-BK. ABUTS., 3 SPANS @ 57'-3", 30'-0" O.-O. DECK, 0° SKEW.

EXISTING PIPE AND ENTRANCE TO BE REMOVED SEE SPECIAL PROVISIONS

ROBERT BEHL AND DONALD STROHL

NW. 1/4 SEC. 14, T. 10 N., R. 6 E., 3RD P.M.



FILE NAME = 46804_P&P.DGN	DESIGNED -	REVISED -	4440 ASH GROVE SPRINGFIELD, IL 62711 (217) 793-8600 www.fehr-graham.com	<b>FEHR-GRAHAM &amp; ASSOCIATES, LLC</b> ENGINEERING AND SCIENCE CONSULTANTS FREEPORT, IL. ROCKFORD, IL. HOCHILLE, IL. MONROE, WI. SPRINGFIELD, IL.	<b>PLAN &amp; PROFILE - C.H. 33 (F.A.S. 656)</b>	C.H.	SECTION	COUNTY	TOTAL SHEETS	SHEET NO.
USER NAME = S.A.P.	DRAWN - S.A.P.	REVISED -				33	06-00265-00-BR	SHELBY	29	10
PLOT SCALE = 98	CHECKED -	REVISED -				STA. 86+50.00 TO STA. 201+50.00		ILLINOIS	CONTRACT NO. 95701	
PLOT DATE = 6/18/09	DATE - 6/10/09	REVISED -				SCALE: H=1"=20', V=1"=5'				