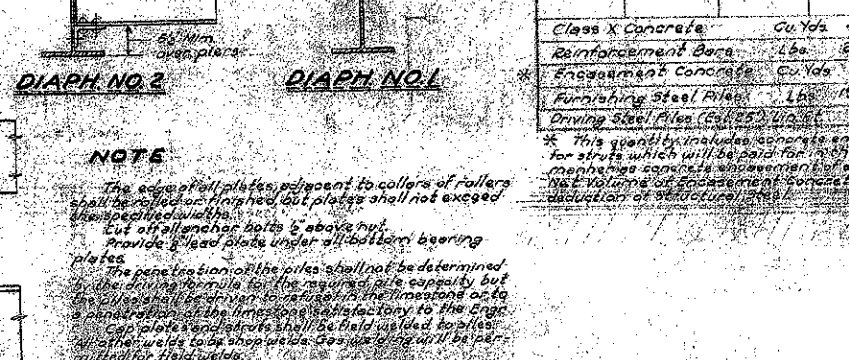
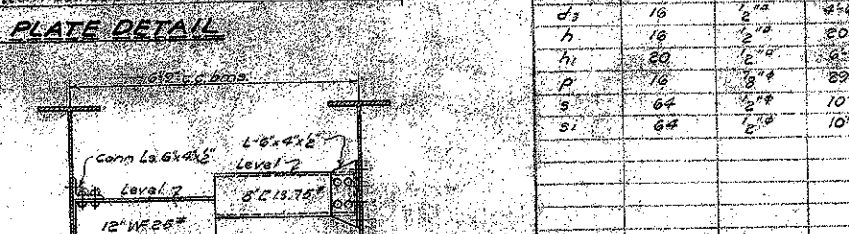
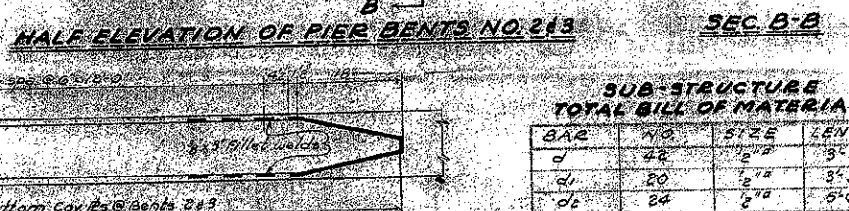
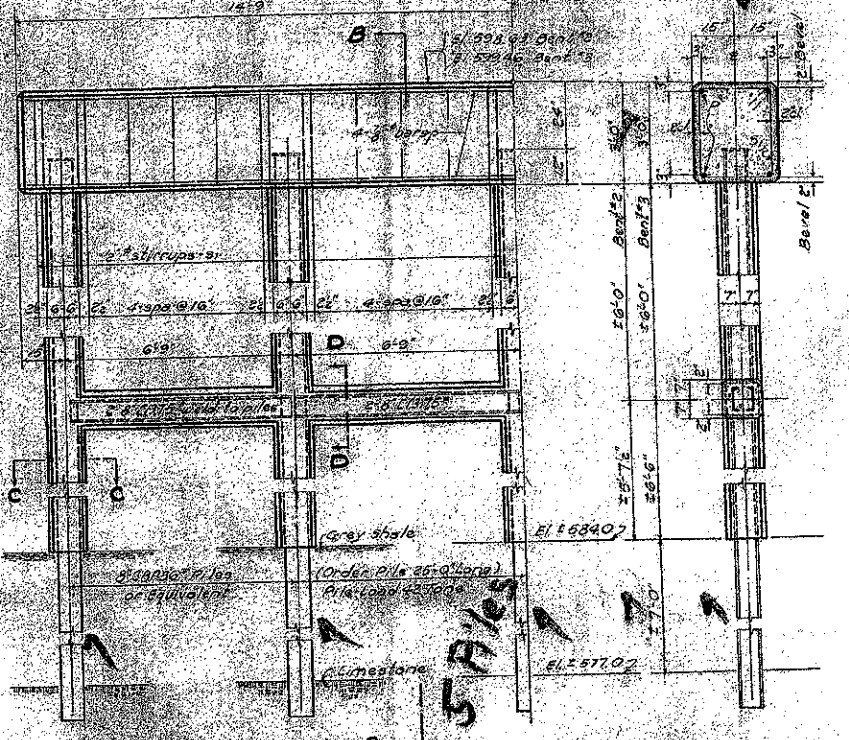
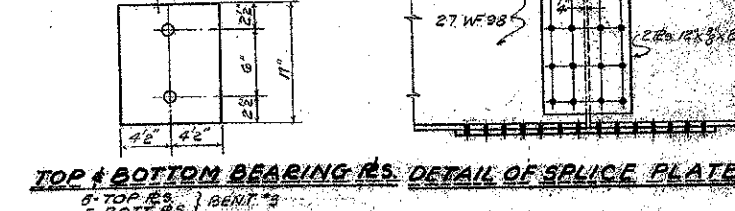
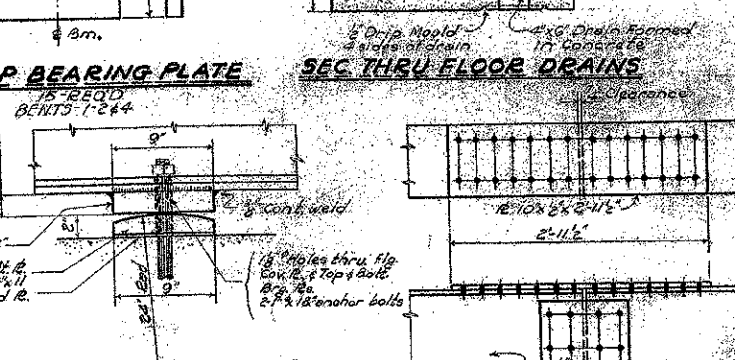
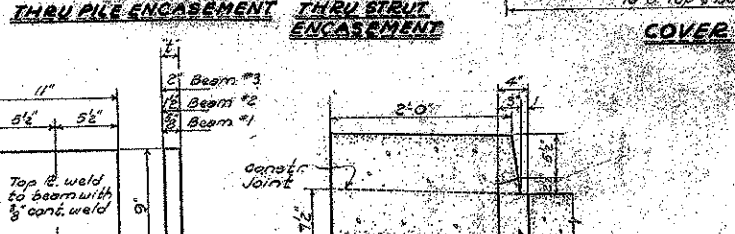
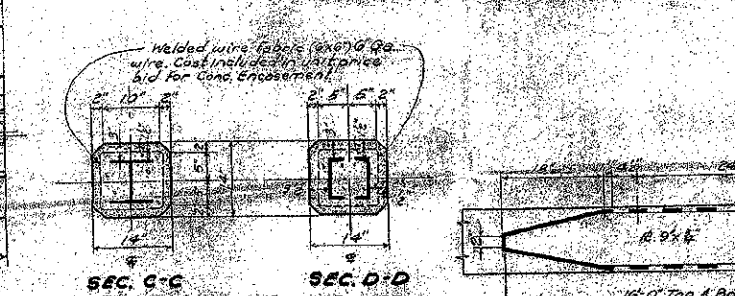
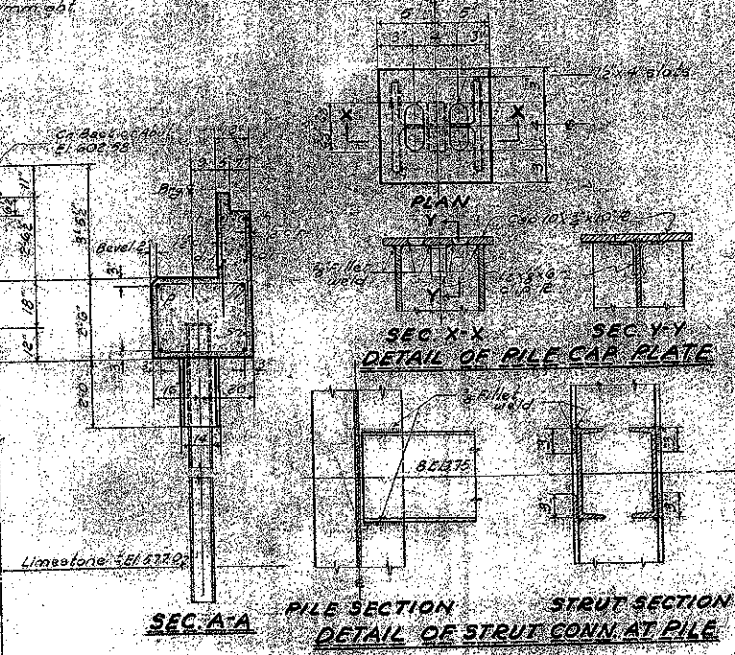
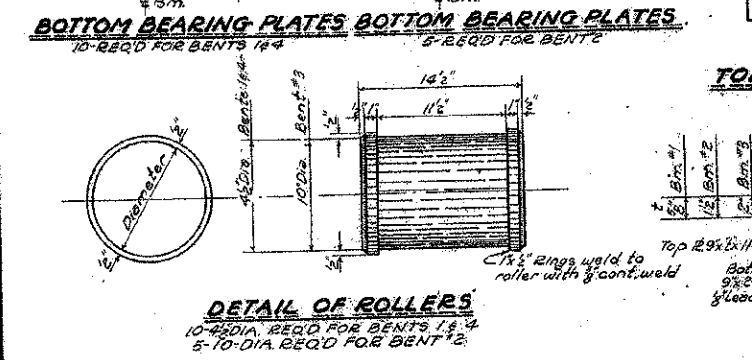
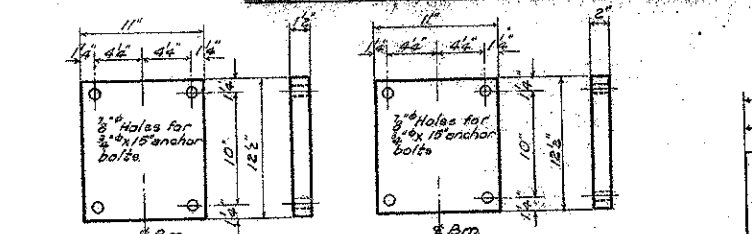
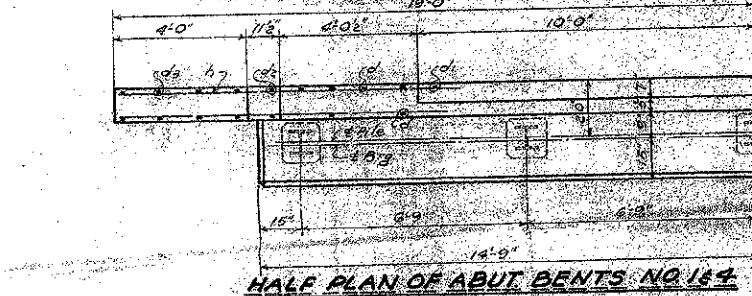
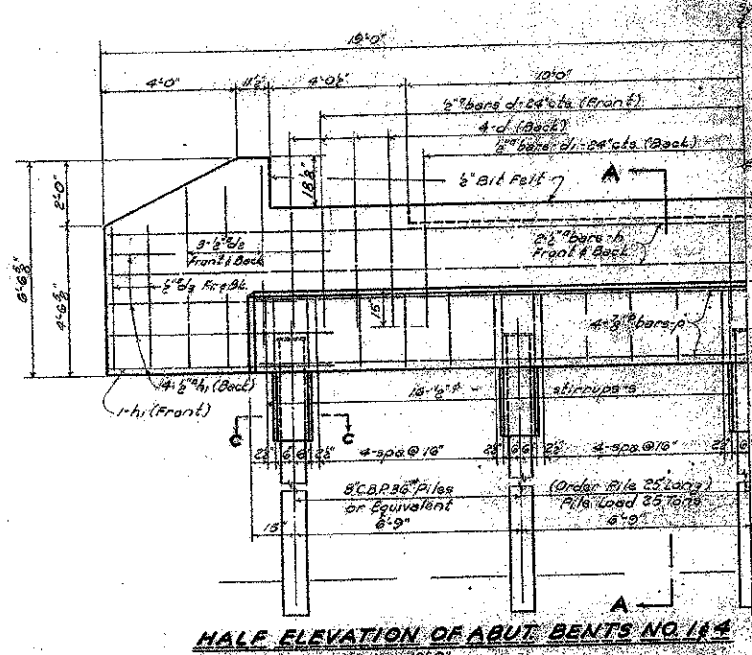


087-3014

STATE OF ILLINOIS  
DEPARTMENT OF PUBLIC WORKS & BUILDINGS  
DIVISION OF HIGHWAYS

SECTION	COUNTY	TOTAL SHEETS	SHEET NO.
25B	Shelby	19	10
3 SHEETS			

SECTION	COUNTY	TOTAL SHEETS	SHEET NO.
00-265-00-BR	SHELBY	29	17
CONTRACT NO. 95701			
ILLINOIS FED. AID PROJECT			



**SUB-STRUCTURE TOTAL BILL OF MATERIAL**

BAR	NO.	SIZE	LENGTH
d	22	2"	3'-3"
d1	20	2"	3'-3"
d2	24	2"	5'-6"
d3	16	2"	2'-8"
h	16	2"	20'-0"
h1	20	2"	6'-6"
p	16	3"	20'-3"
s	64	2"	10'-6"
s1	64	2"	10'-6"

Class X Concrete	Cu Yds	41.6
Reinforcement Bars	Lbs	2600
Encasement Concrete	Cu Yds	8.6
Furnishing Steel Piles	Lbs	10240
Driving Steel Piles (Est. 15%)	Lbs	500

**NOTE**  
The edge of all plates adjacent to collars of rollers shall be rolled or finished, but plates shall not exceed 1/8" thickness.  
Cut off all anchor bolts 2" above nut.  
Provide 1/2" lead plates under all bottom bearing plates.  
The penetration of the piles shall not be determined by the driving formula for the required pile capacity but by the actual penetration of the piles into the limestone or to the limestone if the limestone is satisfactory to the Engineer. Cap plates and struts shall be field welded to piles. All other welds to be shop welded. Gas welding will be permitted for field welds.

Estimated weight of reinforcement bars is 150 lbs per cu yd of concrete.  
Include 1/2" allowance for lap and 1/4" allowance for hook on all bars.  
Reinforcement bars shall be furnished in accordance with the specifications.

F.A.S. PROJECT 2A  
S.A. RTE 7 SECTION 25B  
SHELBY COUNTY  
STA. 60+58

087-3014

THIS SHEET  
FOR INFORMATION ONLY

COMPUTED	MA BRODIE	EXAMINED	3-7-38
CHECKED	M.R. SUPERAK	APPROVED	H. F. BURCH
DRAWN	D.A.B. Sharp	PASSET	W. J. SUMNER
CHECKED	M.P.S.	APPROVED	W. J. SUMNER
SPECIAL	ASSEMBLED		
	CHECKED		