

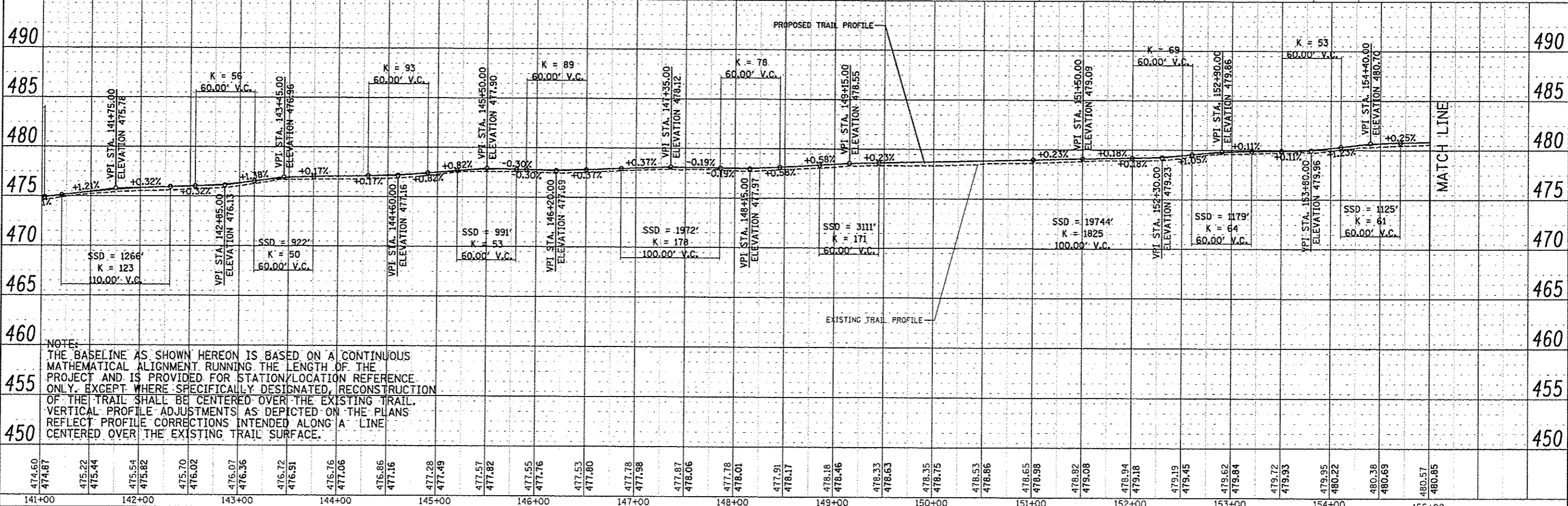
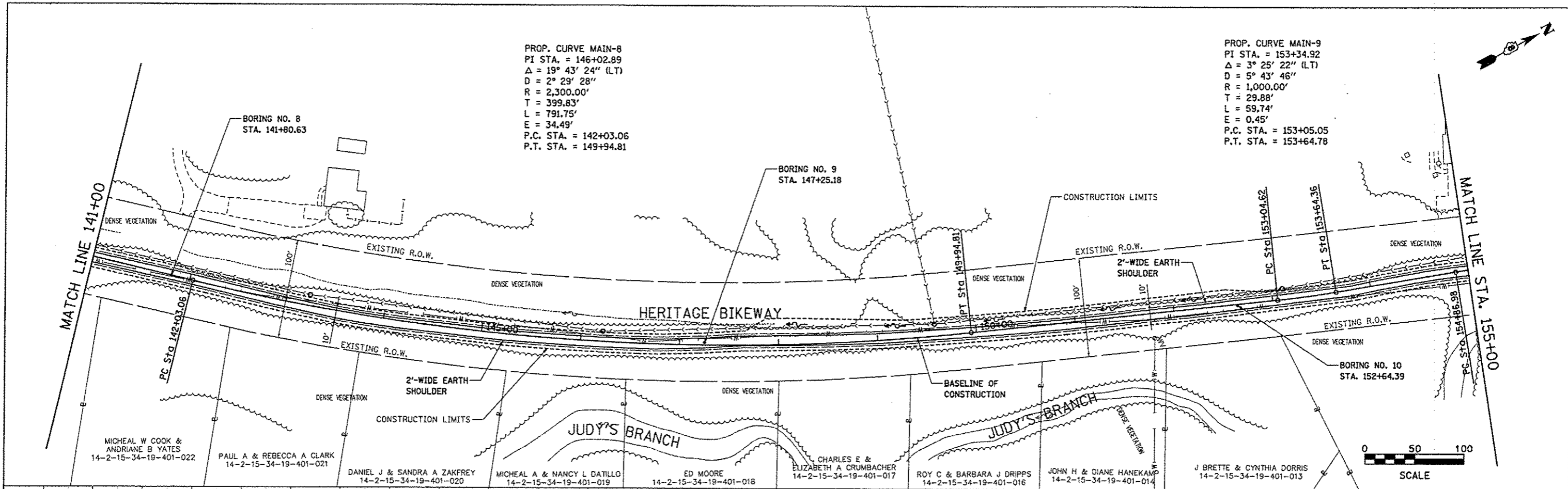


PROP. CURVE MAIN-8
 PI STA. = 146+02.89
 $\Delta = 19^\circ 43' 24''$ (LT)
 $D = 2^\circ 29' 28''$
 $R = 2,300.00'$
 $T = 399.83'$
 $L = 791.75'$
 $E = 34.49'$
 P.C. STA. = 142+03.06
 P.T. STA. = 149+94.81

PROP. CURVE MAIN-9
 PI STA. = 153+34.92
 $\Delta = 3^\circ 25' 22''$ (LT)
 $D = 5^\circ 43' 46''$
 $R = 1,000.00'$
 $T = 29.88'$
 $L = 59.74'$
 $E = 0.45'$
 P.C. STA. = 153+05.05
 P.T. STA. = 153+64.78

PLAN	DATE
BY	
REVISIONS	
NO.	
DATE	
BY	
DESCRIPTION	

PROFILE	DATE
BY	
REVISIONS	
NO.	
DATE	
BY	
DESCRIPTION	



NOTE:
 THE BASELINE AS SHOWN HEREON IS BASED ON A CONTINUOUS MATHEMATICAL ALIGNMENT RUNNING THE LENGTH OF THE PROJECT AND IS PROVIDED FOR STATION/LOCATION REFERENCE ONLY. EXCEPT WHERE SPECIFICALLY DESIGNATED, RECONSTRUCTION OF THE TRAIL SHALL BE CENTERED OVER THE EXISTING TRAIL. VERTICAL PROFILE ADJUSTMENTS AS DEPICTED ON THE PLANS REFLECT PROFILE CORRECTIONS INTENDED ALONG A LINE CENTERED OVER THE EXISTING TRAIL SURFACE.

FILE NAME * plan04.dgn	USER NAME * Jeremy	DESIGNED - SAS	MADISON COUNTY TRANSIT DISTRICT HERITAGE TRAIL	PLAN AND PROFILE	F.A. RTE.	SECTION	COUNTY	TOTAL SHEETS	SHEET NO.	
		DRAWN - JDH			06-00016-00-BT	MADISON	310	35		
		CHECKED - WJB			CONTRACT NO. 97433					
		DATE - 11/30/12			ILLINOIS FED. AID PROJECT					
			SCALE: 1" = 50'		SHEET NO. 4 OF 30 SHEETS		STA. 141+00.00 TO STA. 155+00.00		FED. ROAD DIST. NO.	