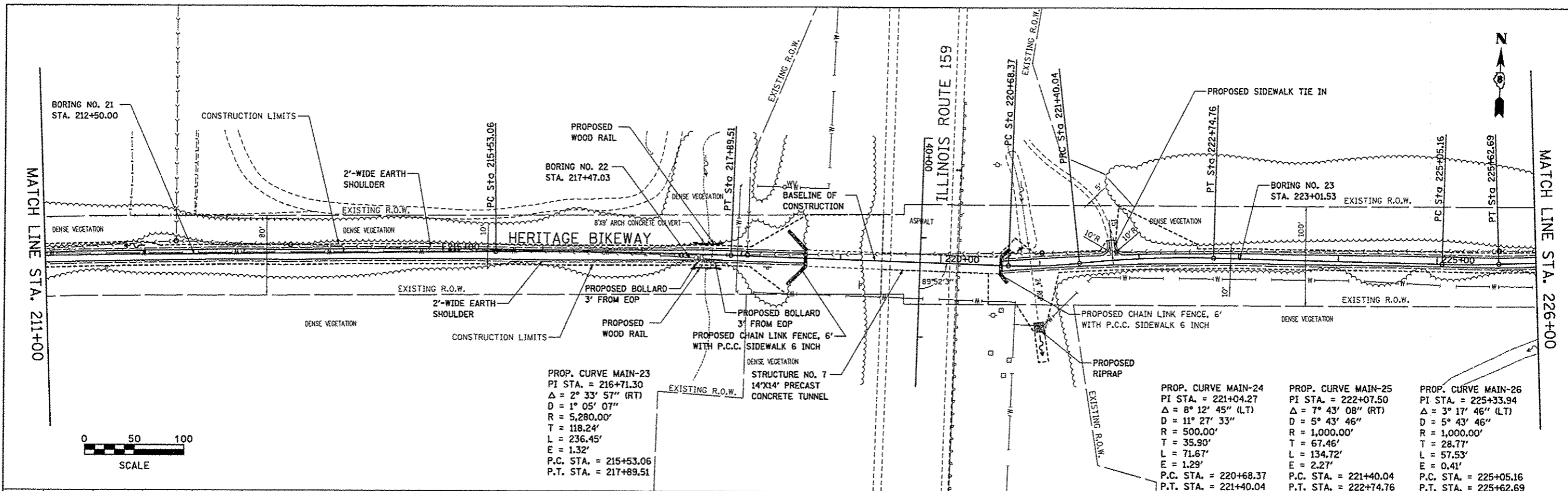
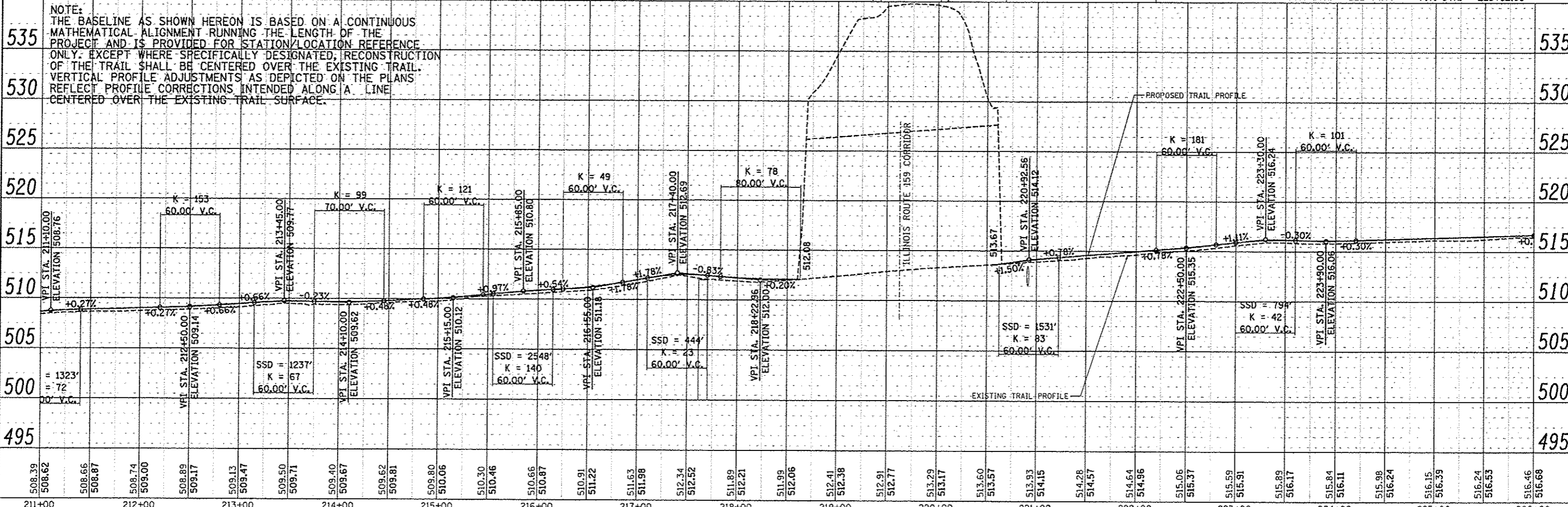


BY	DATE
DESIGNED	
DRAWN	
CHECKED	
DATE	

BY	DATE
DESIGNED	
DRAWN	
CHECKED	
DATE	



NOTE:  
 THE BASELINE AS SHOWN HEREON IS BASED ON A CONTINUOUS MATHEMATICAL ALIGNMENT RUNNING THE LENGTH OF THE PROJECT AND IS PROVIDED FOR STATION/LOCATION REFERENCE ONLY. EXCEPT WHERE SPECIFICALLY DESIGNATED, RECONSTRUCTION OF THE TRAIL SHALL BE CENTERED OVER THE EXISTING TRAIL. VERTICAL PROFILE ADJUSTMENTS AS DEPICTED ON THE PLANS REFLECT PROFILE CORRECTIONS INTENDED ALONG A LINE CENTERED OVER THE EXISTING TRAIL SURFACE.



FILE NAME: p1andp.dgn	USER NAME: Jeremy	DESIGNED: SAS	<b>MADISON COUNTY TRANSIT DISTRICT</b> <b>HERITAGE BIKEWAY</b>	<b>PLAN AND PROFILE</b>	F.A. RTE.	SECTION	COUNTY	TOTAL SHEETS	SHEET NO.
PLOT SCALE: #SCALE#	CHECKED: WJB	DATE: 11/30/12			06-00016-00-BT	MADISON	310	40	
PLOT DATE: 12/18/2012					CONTRACT NO. 97433				
					FED. ROAD DIST. NO. ILLINOIS FED. AID PROJECT				