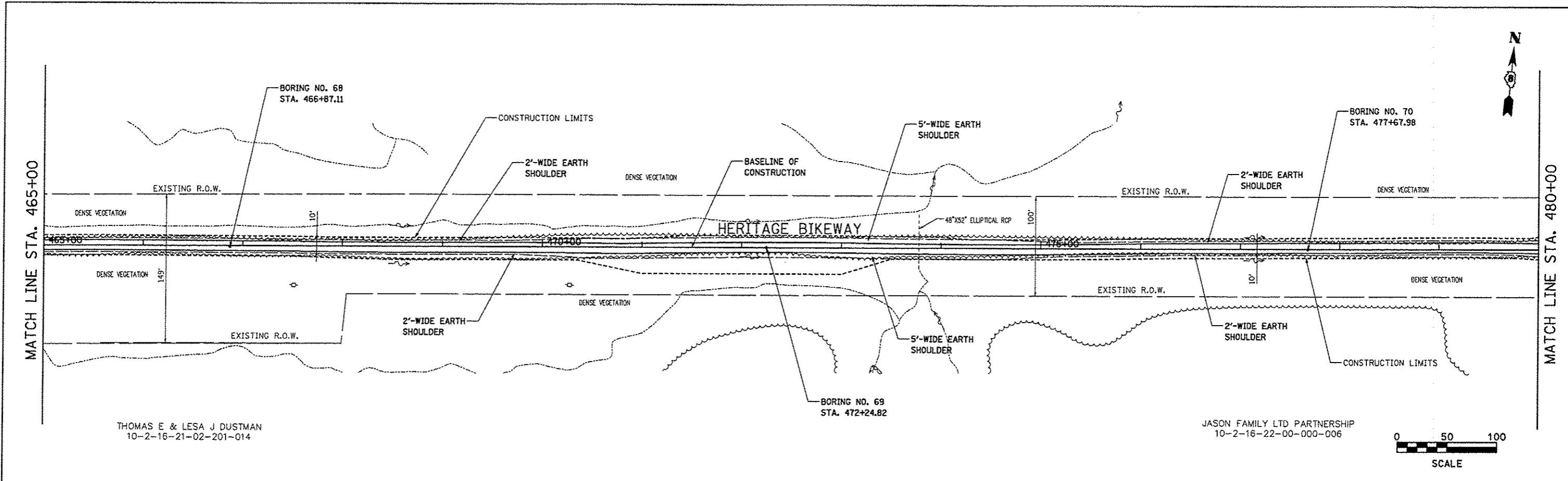


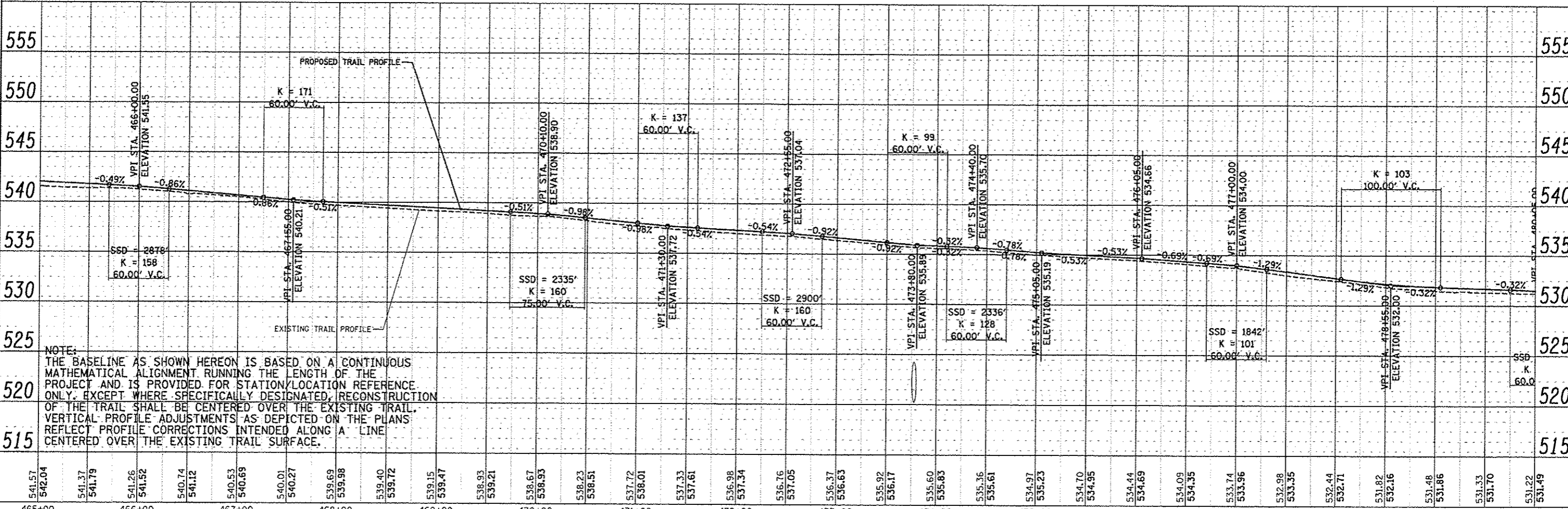
PLAN	DATE
BY	
REVISIONS	
NO.	
DATE	
DESCRIPTION	
1	
2	
3	
4	
5	
6	
7	
8	
9	
10	

PROFILE	DATE
BY	
REVISIONS	
NO.	
DATE	
DESCRIPTION	
1	
2	
3	
4	
5	
6	
7	
8	
9	
10	



THOMAS E & LESA J DUSTMAN
10-2-16-21-02-201-014

JASON FAMILY LTD PARTNERSHIP
10-2-16-22-00-000-006



NOTE:
THE BASELINE AS SHOWN HEREON IS BASED ON A CONTINUOUS MATHEMATICAL ALIGNMENT RUNNING THE LENGTH OF THE PROJECT AND IS PROVIDED FOR STATION/LOCATION REFERENCE ONLY. EXCEPT WHERE SPECIFICALLY DESIGNATED, RECONSTRUCTION OF THE TRAIL SHALL BE CENTERED OVER THE EXISTING TRAIL. VERTICAL PROFILE ADJUSTMENTS AS DEPICTED ON THE PLANS REFLECT PROFILE CORRECTIONS INTENDED ALONG A LINE CENTERED OVER THE EXISTING TRAIL SURFACE.

FILE NAME: plan26.dwg	USER NAME: Jeremy	DESIGNED: SAS	MADISON COUNTY TRANSIT DISTRICT HERITAGE BIKEWAY	PLAN AND PROFILE	F.A. RTE.	SECTION	COUNTY	TOTAL SHEETS	SHEET NO.
PLOT SCALE: *SCALE*	DRAWN: JDH	06-00016-00-8T			MADISON	310	57		
PLOT DATE: 12/18/2012	CHECKED: WJB	CONTRACT NO. 97433							
DATE: 11/30/12	SCALE: 1" = 50'	SHEET NO. 26 OF 30 SHEETS			STA. 465+00.00 TO STA. 480+00.00	FED. ROAD DIST. NO.	ILLINOIS FED. AID PROJECT		