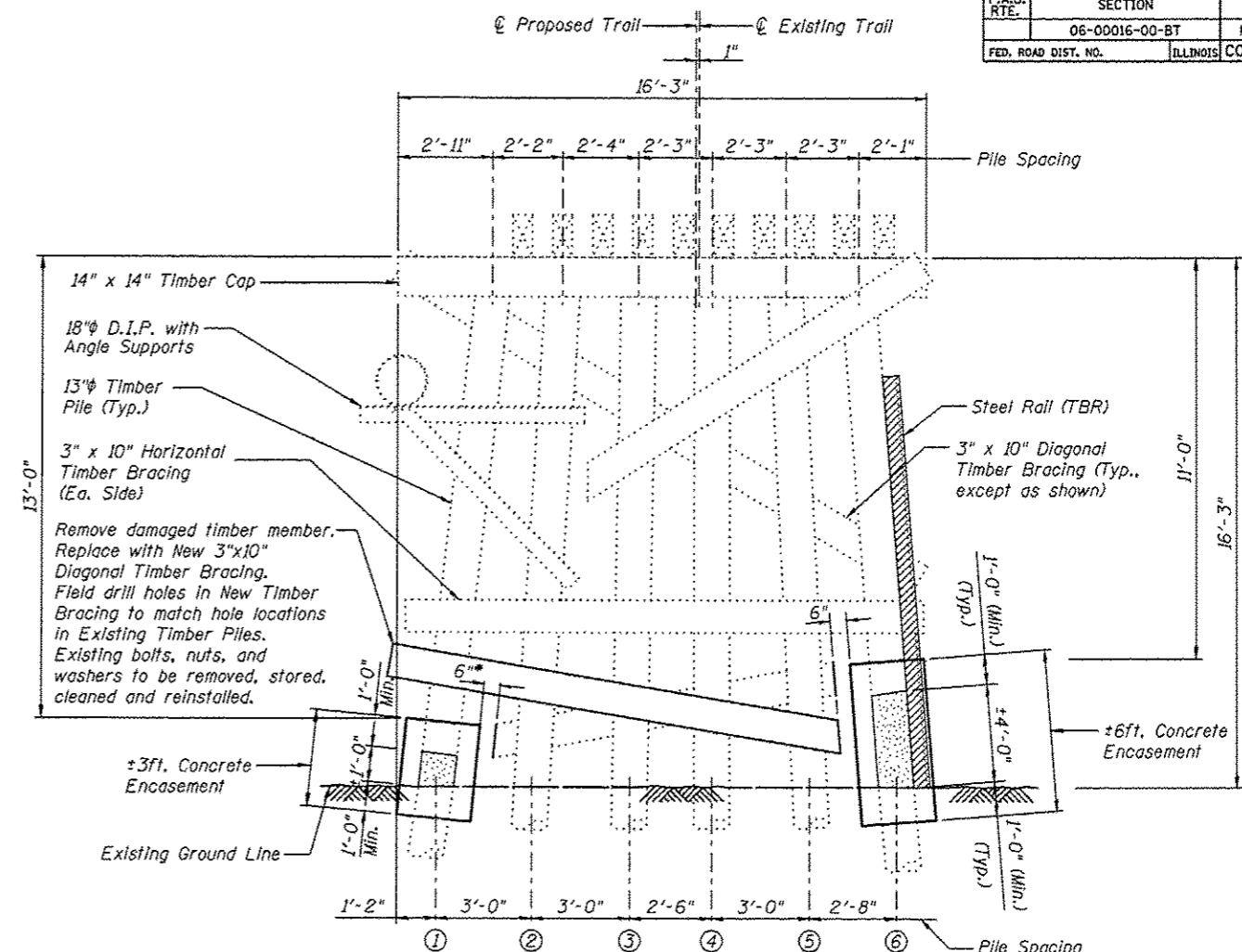


PIER 2
(Looking East)

PIER 2
BILL OF MATERIAL

Item	Unit	Quantity
Stainless Steel Bands	LIn Ft	41

For estimated quantities, see Special Provisions.

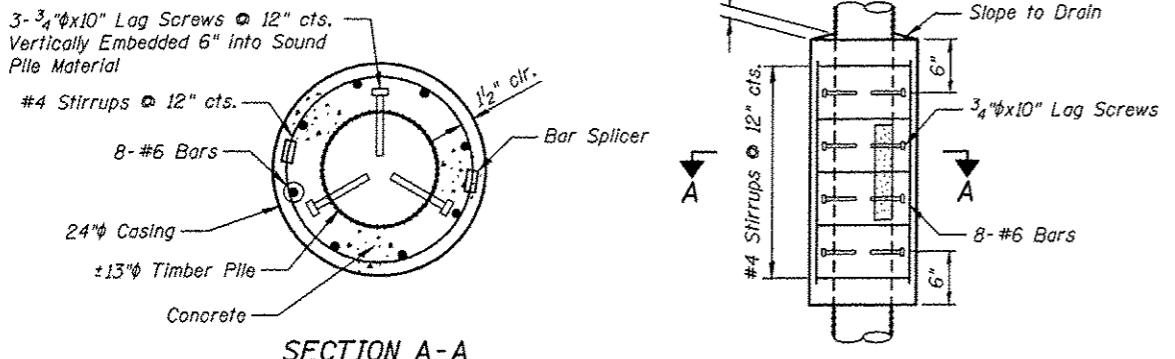


PIER 3
(Looking East)

PIER 3
BILL OF MATERIAL

Item	Unit	Quantity
Concrete Encasement	Cu Yd	1.3
Treated Timber	F.B.M.	35

For estimated quantities, see Special Provisions.



SECTION A-A

Payment for furnishing all material, labor and excavation necessary to construct the Concrete Encasement, including the casing, lag screws, concrete, reinforcement bars, bar splicers, partial removal of bracing, removal of steel rail, removal of deteriorated timber and all other appurtenances and incidental work as shown on this sheet, complete in place, will be considered completely covered by the contract unit price per cubic yard for Concrete Encasement.

CONCRETE ENCASEMENT DETAILS

Notes:

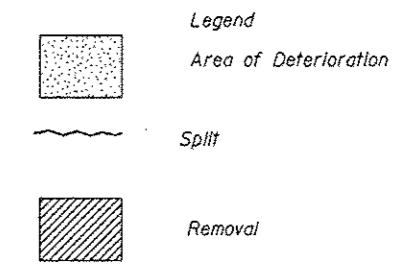
All dimensions are approximate.

The stainless steel bands shall be stainless steel with a minimum width of 3/4" and a minimum thickness of 0.030" and shall be installed per the manufacturer's recommendation. Product data shall be submitted to the Engineer for approval prior to installation.

Concrete Encasement shall extend above and below the damaged area of the pile a minimum of 1'-0".

* Existing timber bracing that interferes with the Concrete Encasement shall be removed a max distance of 6" beyond the face of the Concrete Encasement. Cost included with Concrete Encasement.

** The existing timber bracing shall be reinstalled after the installation of the Stainless Steel Bands. Existing bolts, nuts, and washers to be removed, cleaned and reinstalled. Cost of removing and relocating the existing timber bracing shall be included with Stainless Steel Bands.



<p>Juneau Associates, Inc. P.C. CONSULTING ENGINEERS AND LAND SURVEYORS 2100 State Street, P.O. Box 1225 Juneau, Alaska 99801 Phone: (907) 586-1100 Fax: (907) 586-1101</p>		<p>GLEN CARBON HERITAGE BIKE TRAIL OVER JUDY BRANCH MADISON COUNTY STATION 118+47.70 STRUCTURE NO. 2</p>									
<p>REVISIONS</p> <table border="1"> <thead> <tr> <th>NO.</th> <th>DATE</th> <th>BY</th> <th>REMARKS</th> </tr> </thead> <tbody> <tr> <td> </td> <td> </td> <td> </td> <td> </td> </tr> </tbody> </table>		NO.	DATE	BY	REMARKS					<p>SCALE: NOT TO SCALE, FOLLOW DIMENSIONS</p>	
NO.	DATE	BY	REMARKS								
<p>DGN NAME:</p>		<p>DSN. BY: DB</p>	<p>DATE: 10/18/12</p>								
<p>JOB NO. E064403</p>		<p>DWN. BY: EER</p>	<p>DATE: 10/18/12</p>								
<p>DGN. NO.</p>		<p>CHK'D: WWH</p>	<p>DATE: 10/18/12</p>								
<p>OF 810 SHEETS</p>		<p>SHEET 165</p>									

Printed 10/24/12 12/19/2012 W:\STRUCTURE\Drawings\Structure -02\Proposed Structure -02\PIER 2 & Pier 3.dgn