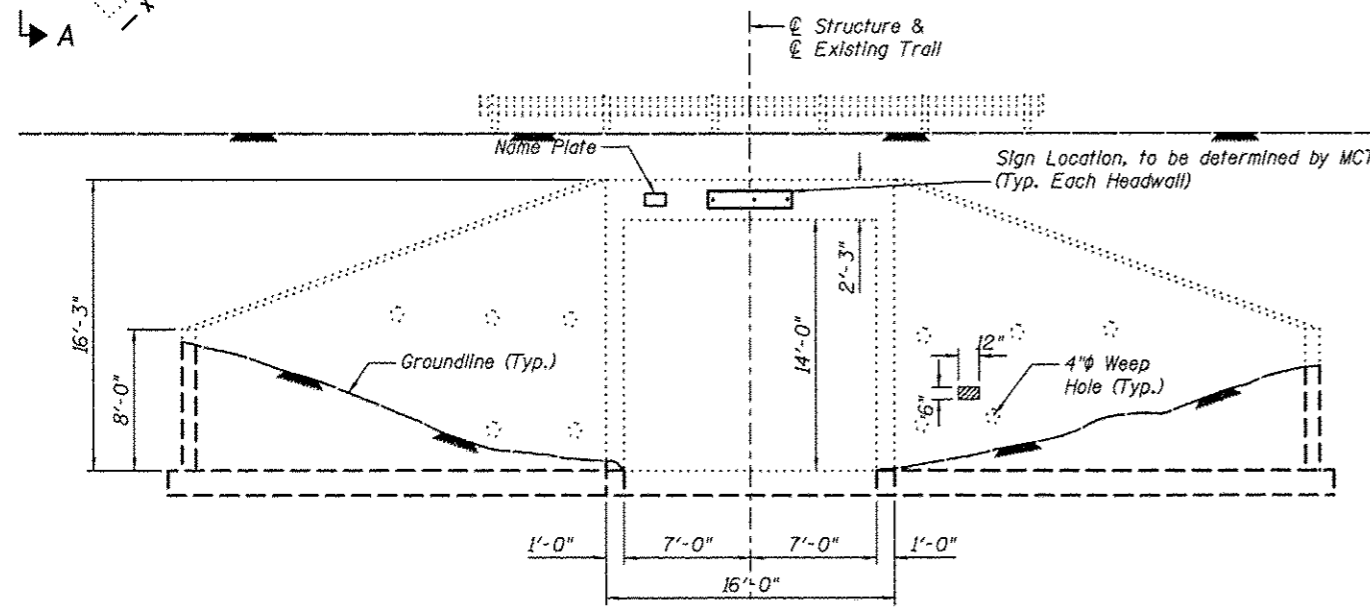
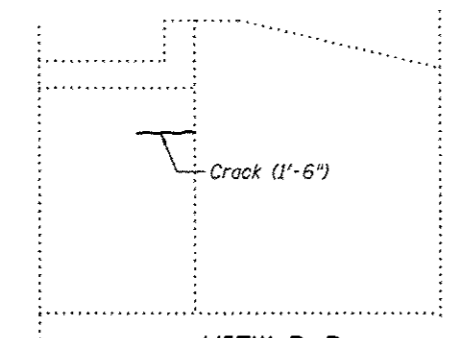


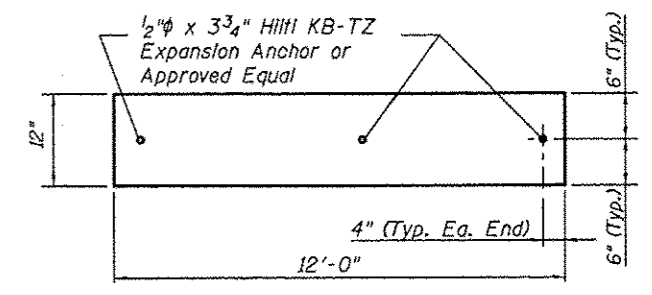
PLAN



VIEW A-A



VIEW B-B



SIGN
(2 Required)
6" White Letters on Green Background

TOTAL BILL OF MATERIAL

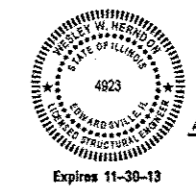
ITEM	UNIT	TOTAL
Structural Repair of Concrete (Depth Equal to or less than 5 inches)	Sq Ft	90
Furnish and Erect Sign Panel	Sq Ft	24
Epoxy Crack Injection	Foot	10
Box Culverts to be Cleaned	Foot	200
Paint Removal	Sq Ft	7820

LEGEND

- Epoxy Crack Injection
- Structural Repair of Concrete (Depth Equal to or less than 5")

Note:
All cracks are hairline unless otherwise noted.

I certify to the best of knowledge, information and belief, this pedestrian fence design is structurally adequate for the design loading shown on the plans. The design is an economical one for the style of structure and complies with requirements of the current AASHTO Standard Specification for Highway Bridges.



Wesley W. Herndon 1/2/13
WESLEY W. HERNDON, S.E. DATE

GENERAL NOTES

Plan dimensions and details relative to existing structure are subject to nominal construction variations. It shall be the contractor's responsibility to verify such dimensions and details in the field and make necessary approved adjustments prior to construction or ordering of materials. Such variations shall not be cause for additional compensation for a change in the scope of the work; however, the contractor will be paid for the quantity actually furnished at the unit price bid for the work.

- See Bikeway Plans for underground utility locations.
- See Bikeway Plans for profile grade of trail.

SIGN NOTES

All traffic control signs shall be manufactured and erected in accordance with the "Manual on Uniform Traffic Control Devices for Streets and Highways" latest edition, as published by the U.S. Department of Transportation and the "Illinois Supplement to the National Manual on Uniform Traffic Control Devices" latest edition, and the "Standard Specifications for Road and Bridge Construction", latest edition, as published by the Illinois Department of Transportation; and as shown on the plans.

All dimensions of all traffic control signs shall be the minimum size shown on the above referenced manual unless otherwise stated on the plans.

Artwork to be provided by the Madison County Transit District.

Madison County Transit District shall direct the contractor as to the vertical placement of the sign on the tunnel head wall. 3/8" round holes shall be field drilled into the aluminum sign to match the final installation placement of the sign.

The sign panel must comply with IDOT Standard Specifications, Section 720.

All hardware shall be HILTI KB-TZ Expansion Anchors or an approved equal and shall be Type 304 or 316 stainless steel with a minimum embedment of 2 3/8". All nuts, and washers shall be Type 304 or 316 stainless steel.

Payment for furnishing and installing all material & labor necessary to construct the signs, including the field drilling existing concrete, field drilling sign, expansion anchors and all other appurtenances and incidental work as shown, complete in place, will be considered completely covered by the contract unit price for Furnish and Erect Sign Panel per each.

 Juneau Associates, Inc. P.C. CONSULTING ENGINEERS AND LAND SURVEYORS 2128 Spring Street, P.O. Box 1329 Granite City, Illinois 62040 Phone: (618) 937-1500 Fax: (618) 937-0900		GLEN CARBON HERITAGE BIKE TRAIL TUNNEL UNDER IL RTE. 159 MADISON COUNTY STATION 219+71.97 STRUCTURE NO. 7	
REVISIONS NO. DATE BY REMARKS		SCALE: NOT TO SCALE, FOLLOW DIMENSIONS	
DSN BY: DB DATE: 10/18/12 SHEET: 206		DWN BY: EER DATE: 10/18/12	
CHK'D: WWH DATE: 10/18/12		JOB NO. E064403 DGN. NO. OF 310 SHTS	
DGN NAME:			