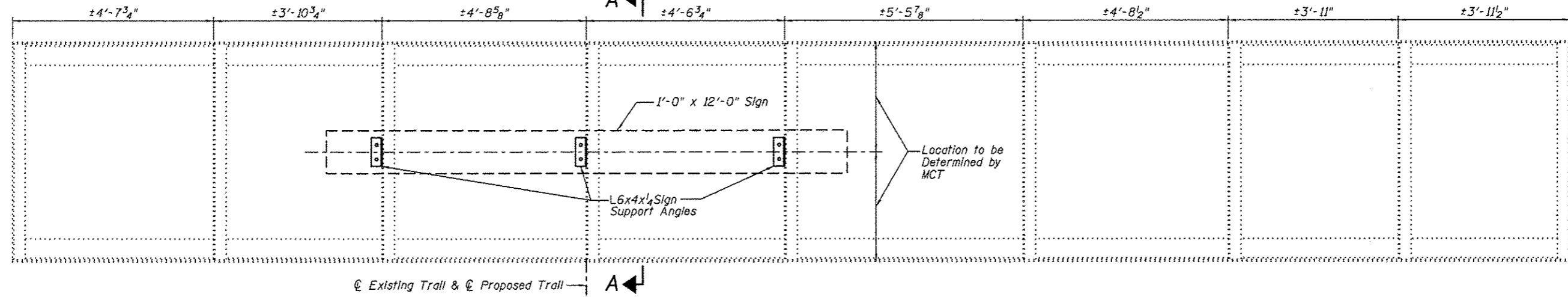


**ELEVATION OF EAST GIRDER**  
(Looking West)



**ELEVATION OF WEST GIRDER**  
(Looking East)

**GENERAL NOTES**

Plan dimensions and details relative to existing structure are subject to nominal construction variations. It shall be the contractor's responsibility to verify such dimensions and details in the field and make necessary approved adjustments prior to construction or ordering of materials. Such variations shall not be cause for additional compensation for a change in the scope of the work; however, the contractor will be paid for the quantity actually furnished at the unit price bid for the work.

See Bikeway Plans for underground utility locations.  
See Bikeway Plans for profile grade of trail.

**BILL OF MATERIAL**

Item	Unit	Quantity
Furnish and Erect Sign Panel	Sq Ft	24

**SIGN NOTES**

All traffic control signs shall be manufactured and erected in accordance with the "Manual on Uniform Traffic Control Devices for Streets and Highways" latest edition, as published by the U.S. Department of Transportation and the "Illinois Supplement to the National Manual on Uniform Traffic Control Devices" latest edition, and the "Standard Specifications for Road and Bridge Construction", latest edition, as published by the Illinois Department of Transportation; and as shown on the plans.

All dimensions of all traffic control signs shall be the minimum size shown on the above referenced manual unless otherwise stated on the plans.

Madison County Transit District shall direct the contractor as to the vertical placement of the sign on the through girder.

9/16" round holes shall be field drilled into the aluminum sign to match the final installed placement of the L6x4x1/4 sign support angle.

The sign panel must comply with IDOT Standard Specifications, Section 720.

All Structural Steel, including angles shall conform to AASHTO M270 in accordance with Article 1006.04 and shall be hot dipped galvanized according to AASHTO M232. All hardware including bolts, washers, nuts shall be stainless steel in accordance with Article 1006.29(d) of the Standard Specifications.

Artwork to be provided by the Madison County Transit District.

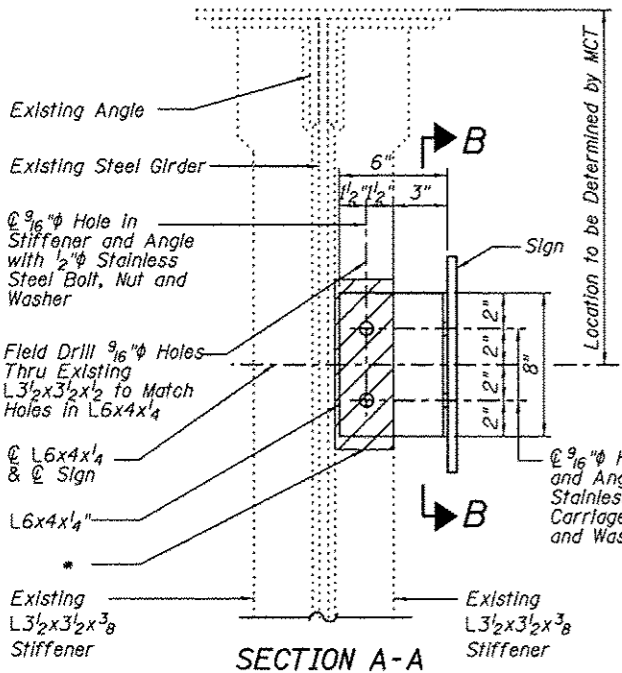
\* Surfaces of the existing structural steel that will be in contact with the new structural steel shall be cleaned and painted in accordance with the Special Provision Cleaning and Painting Contact Surface Areas of Existing Structural Steel. The extent of the area shall be a minimum of 2 inches beyond the plate in all directions.

Payment for furnishing and installing all material and labor necessary to construct the signs, including the angles, hot dipped galvanizing, field drilling existing structural steel, field drilling sign, cleaning and painting contact surface areas of existing structural steel, bolts, nuts, washers, and all other appurtenances and incidental work as shown, complete in place, will be considered completely covered by the contract unit price for Furnish and Erect Sign Panel per each.

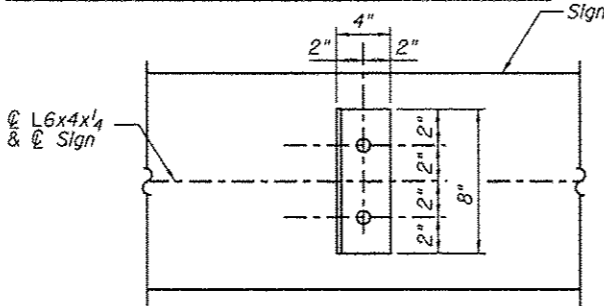
I certify to the best of knowledge, information and belief, this sign support design is structurally adequate for the design loading shown on the plans. The design is an economical one for the style of structure and complies with requirements of the current AASHTO Standard Specification for Highway Bridges.



*Wesley W. Herndon*  
WESLEY W. HERNDON, S.E.  
DATE: 1/2/13



**SECTION A-A**



**SECTION B-B**

SIGN DETAILS FOR GOSHEN TRAIL BRIDGE			
<b>Juneau Associates, Inc. P.C.</b> <small>CONSULTING ENGINEERS AND LAND SURVEYORS</small> 210 State Street, P.O. Box 1125 Chicago, IL 60604-0125 Phone: (312) 467-1100 Fax: (312) 467-0401		<b>GLEN CARBON HERITAGE BIKE TRAIL UNDER GOSHEN TRAIL</b> <b>MADISON COUNTY SIGN ATTACHMENT TO EXISTING BRIDGE</b>	
REVISIONS: NO., DATE, BY, REMARKS			
SCALE: NOT TO SCALE, FOLLOW DIMENSIONS			
DSN. BY: DB DATE: 10/18/12		SHEET: 250	
DWN. BY: EER DATE: 10/18/12		CHCK'D: WWH DATE: 10/18/12	
DGN NAME:		JOB NO. E064403 DGN. NO. OF 310 SHTS	

1/2/2013 8:28:53 AM W:\STRUCTURE\064403 MCT Heritage Trail\Drawings\Structure 064403\000250 Sign Details.dgn