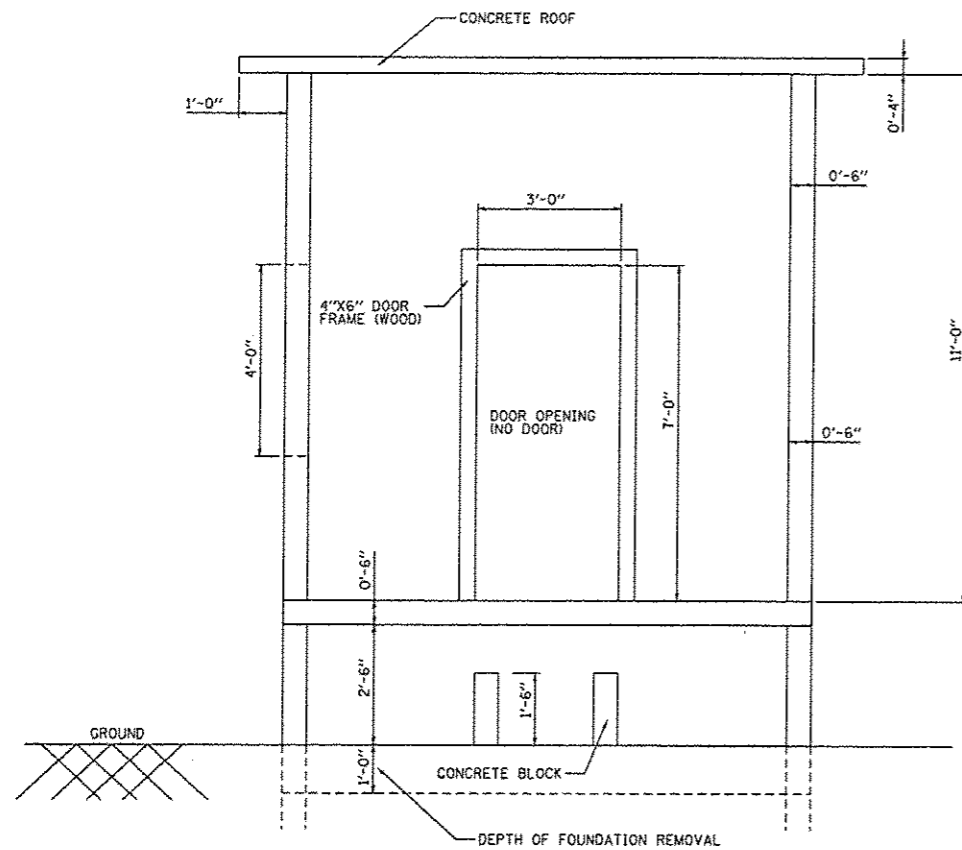
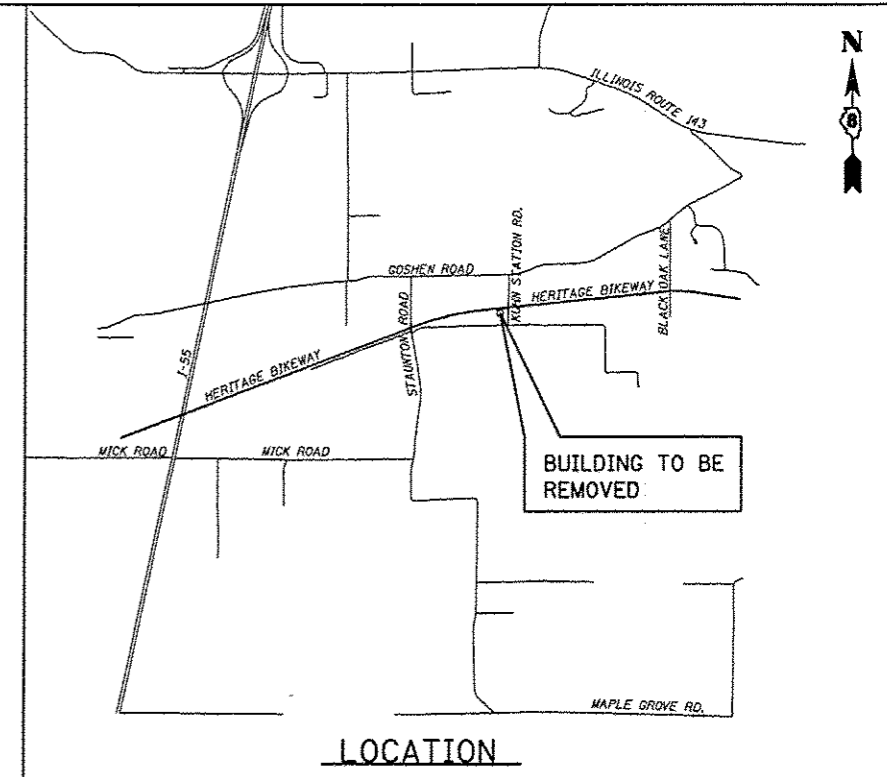
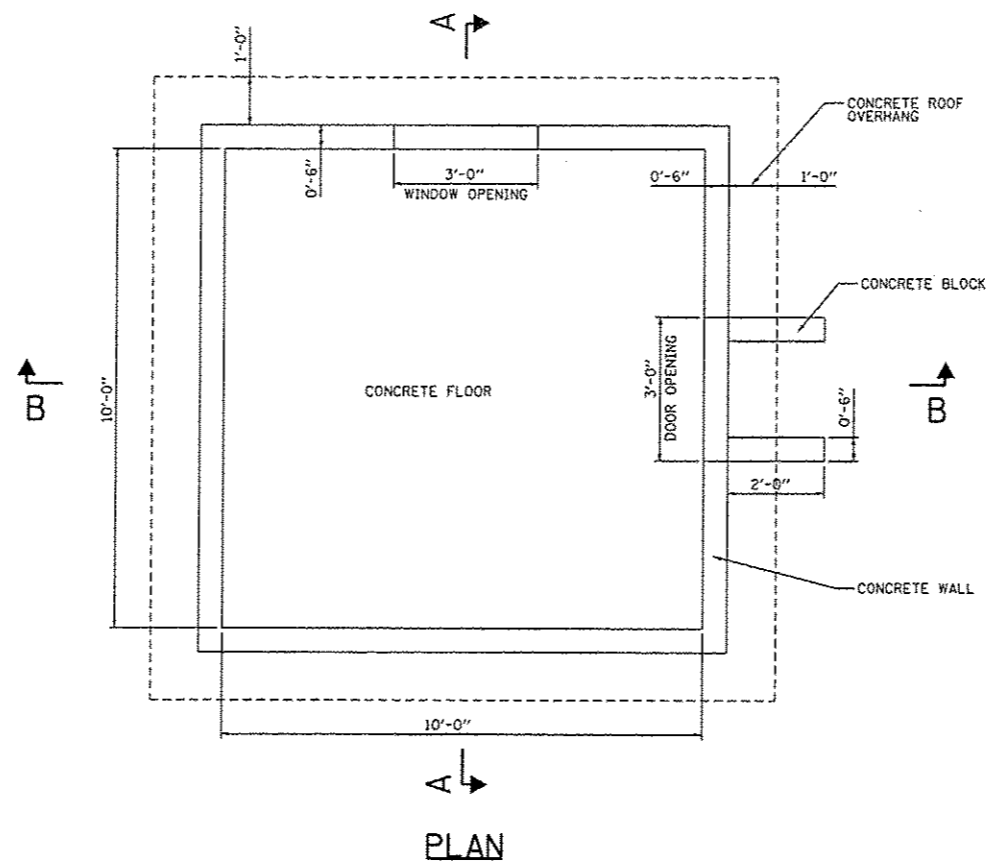
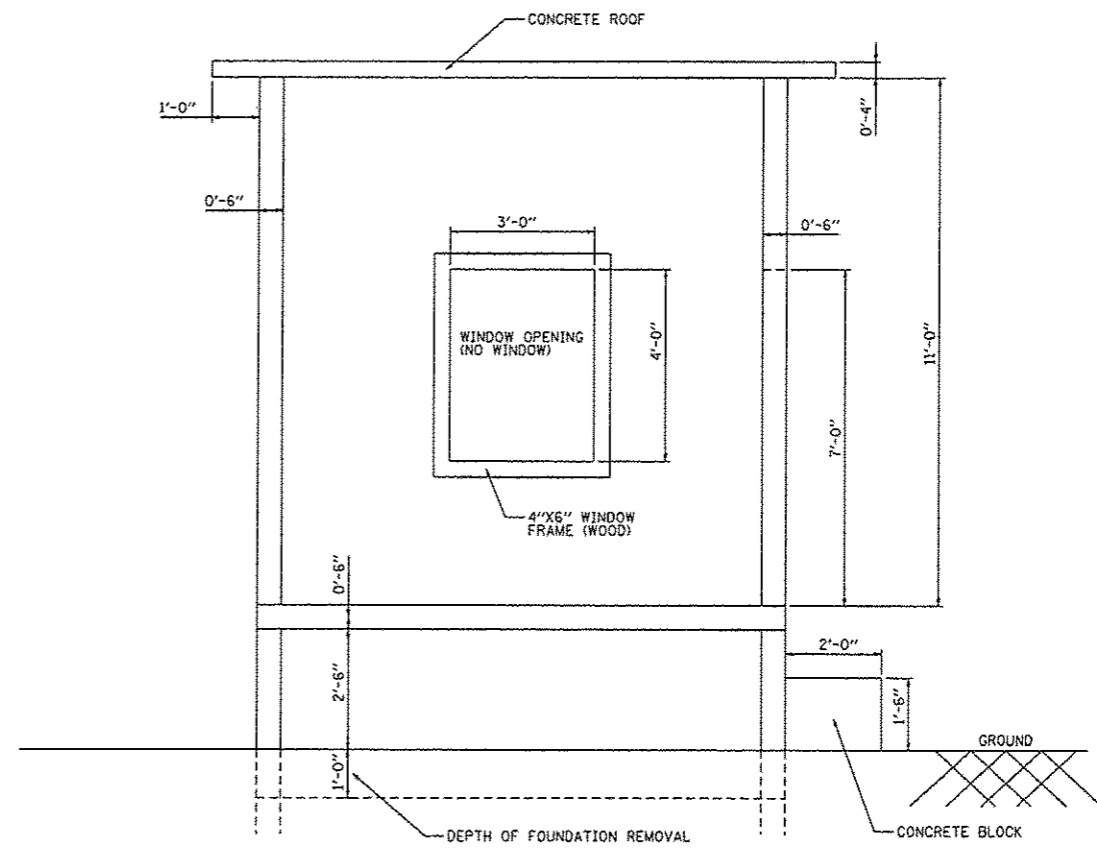


GENERAL NOTES

1. REMOVAL OF EXISTING BUILDING STRUCTURE SHALL BE DONE ACCORDING TO SECTION 501 OF THE STANDARD SPECIFICATION. EXISTING STRUCTURE SHALL BE REMOVED AT LEAST 1 FT BELOW GROUND SURFACE.
2. FILLING OF THE FOUNDATION SHALL CONSIST OF THE CONSTRUCTION OF EMBANKMENT ACCORDING TO SECTION 205 OF THE STANDARD SPECIFICATION. COMPACTION SHALL BE DONE AS DIRECTED BY THE ENGINEER. THE COST OF REPLACEMENT FILL MATERIAL SHALL BE INCLUDED IN BUILDING REMOVAL.



SECTION A - A



SECTION B - B

BUILDING REMOVAL DETAIL

FILE NAME *	USER NAME * joremy	DESIGNED - SAS	REVISED -	MADISON COUNTY MASS TRANSIT DISTRICT HERITAGE BIKEWAY	MISCELLANEOUS DETAILS			F.A. RTE.	SECTION	COUNTY	TOTAL SHEETS	SHEET NO.	
#FILE#		DRAWN - SAS	REVISED -		SCALE: N.T.S.	SHEET NO. 3 OF 3 SHEETS	STA.	TO STA.	06-00016-00-BT	MADISON	310	257	
		CHECKED - SAS	REVISED -										
		DATE - 11/30/12	REVISED -										
								CONTRACT NO. 97433					
								FED. ROAD DIST. NO. ILLINOIS FED. AID PROJECT					