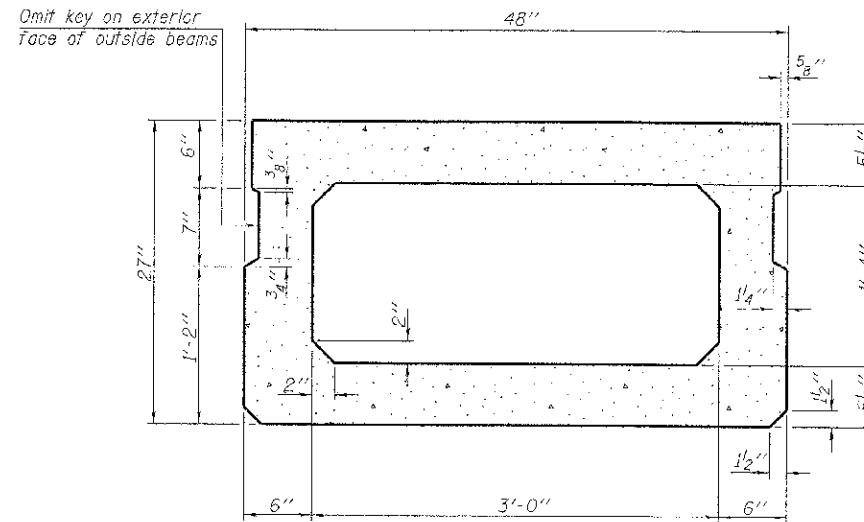
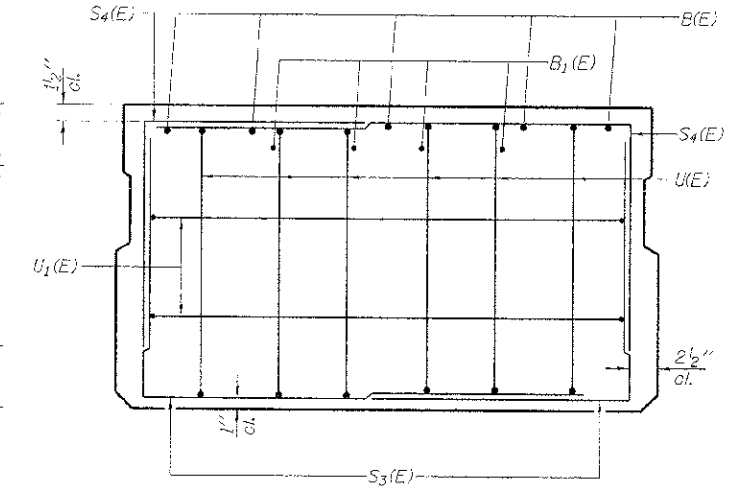


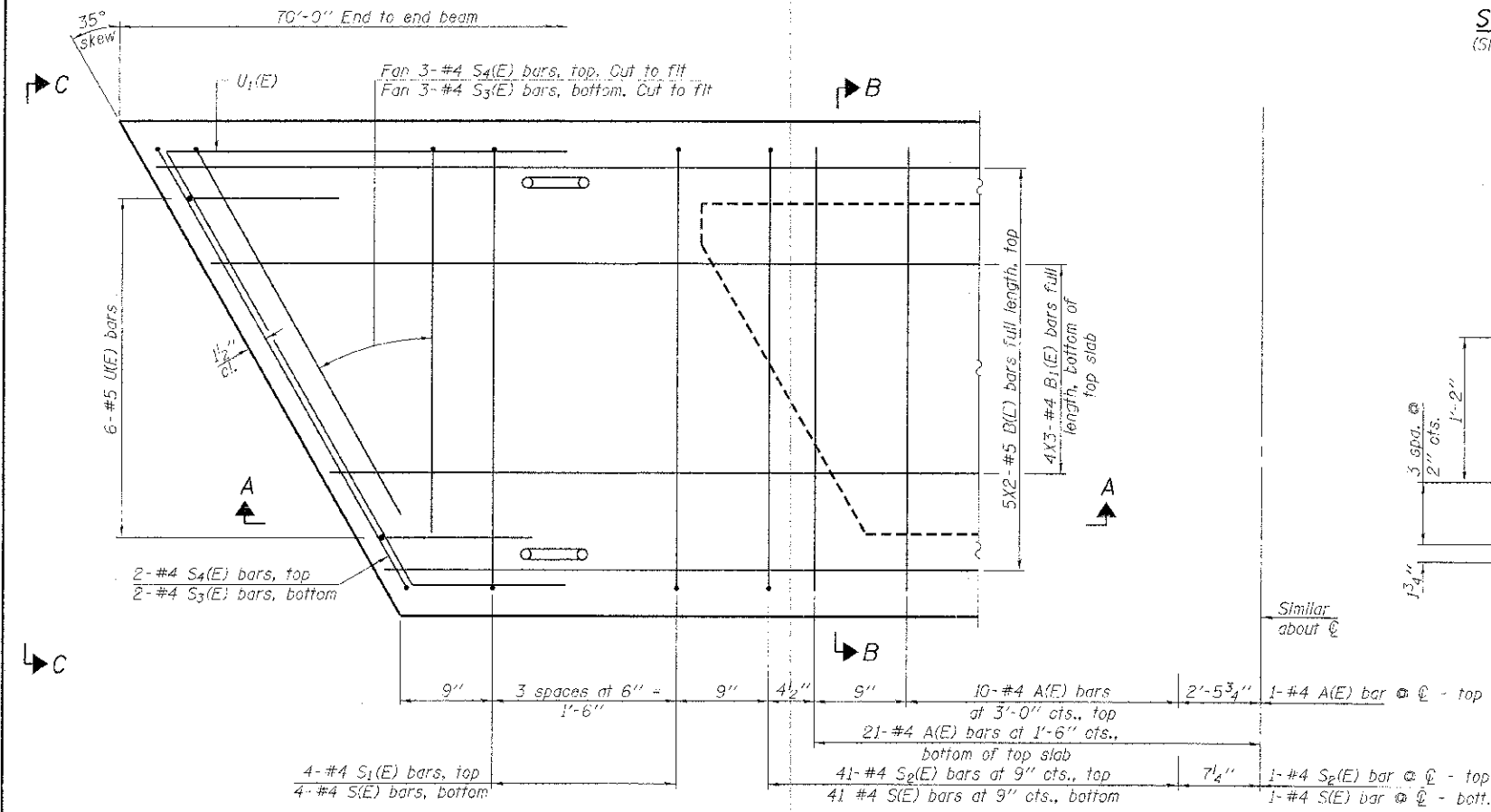
SECTION A-A



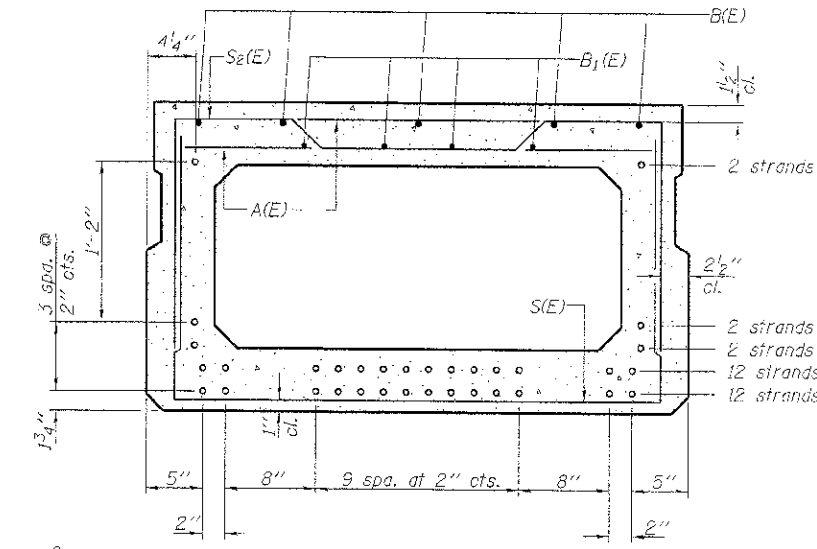
SECTION B-B
(Showing dimensions)



VIEW C-C



PLAN VIEW



SECTION B-B
(Showing reinforcement and permissible strand locations)

Note: Place the number of strands specified in each row symmetrically about the centerline of beam in the permissible strand locations shown.

BAR LIST
ONE BEAM ONLY
(For information only)

Bar	No.	Size	Length	Shape
A(E)	53	#4	3'-7"	—
B(E)	10	#5	36'-2"	—
B1(E)	12	#4	24'-7"	—
S(E)	91	#4	7'-5"	┌
S1(E)	8	#4	6'-11"	┌
S2(E)	83	#4	7'-2"	┌
S2(E)	10	#4	5'-0"	┌
S4(E)	10	#4	4'-9"	┌
U(E)	12	#5	4'-6"	┌
U1(E)	4	#4	9'-3"	┌

Note: See sheets 3 & 4 of 9 for additional details and Bill of Material.

Notes:
Spacing of S(E) and S2(E) bars may be adjusted up to 4" in the immediate area of the transverse tie diaphragms to miss the block outs for the transverse ties.
Bars indicated thus 5x2-#5 etc. indicates 5 lines of bars with 2 lengths per line.

MINIMUM BAR LAP
#4 bar = 2'-0"
#5 bar = 2'-6"

PD-2748-R 7-1-10

FILE NAME = I10272-ent-brdgw.dgn	USER NAME =	DESIGNED - A.S.L.	REVISED
HAMPTON, LENZINI AND RENWICK, INC.		CHECKED - S.W.M.	REVISED -
388 S. PEPERON DRIVE, SUITE 201 SPRINGFIELD, ILLINOIS 62763		DRAWN - D.A.B.	REVISED -
ILLINOIS PROFESSIONAL DESIGN FIRM L.S. # 012-000150		CHECKED - S.W.M.	REVISED -
	PLOT SCALE =		
	PLOT DATE = 12/2/2012		

STATE OF ILLINOIS
WHITE COUNTY HIGHWAY DEPARTMENT

27" x 48" PPC DECK BEAM
STRUCTURE NO. 097-3279

SHEET NO. 2 OF 9 SHEETS

T.R.	SECTION	COUNTY	TOTAL SHEETS	SHEET NO.
27	10-05317-00-3R	WHITE	13	6
GRAY ROAD DISTRICT			CONTRACT NO. 99484	
(ILLINOIS) FED. AID PROJECT BRG-1930581				