

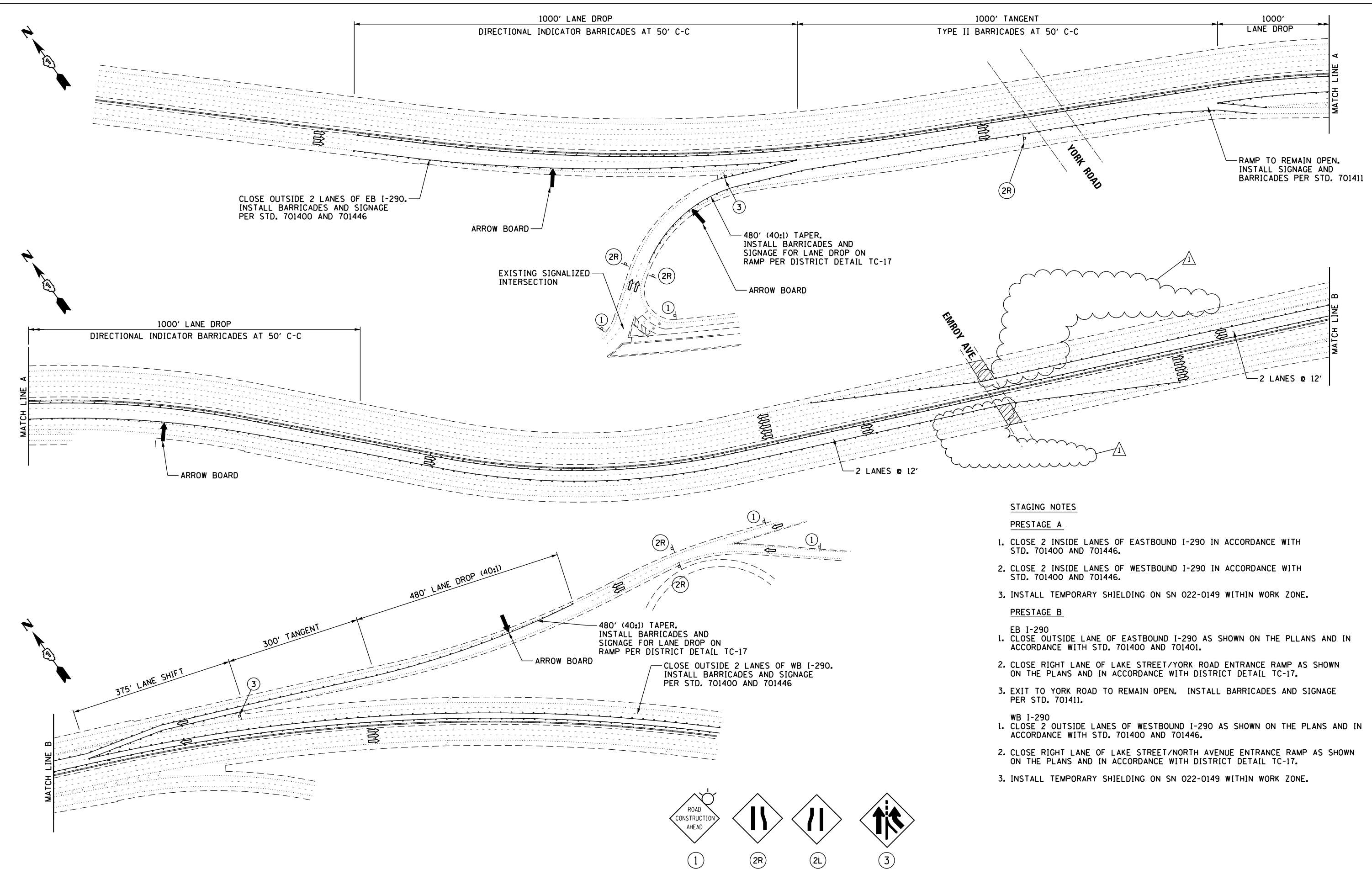
SUMMARY OF QUANTITIES			90% FED 10% STATE TOTAL QUANTITY	CONSTRUCTION TYPE CODE			
CODE NO	ITEM	UNIT		ROADWAY 0013			
40600290	BITUMINOUS MATERIALS (TACK COAT)	POUND	346	346			
40600985	PORTLAND CEMENT CONCRETE SURFACE REMOVAL - BUTT JOINT	SO YD	217	217			
40603340	HOT-MIX ASPHALT SURFACE COURSE, MIX "D", N70	TON	66	66			
42300400	PORTLAND CEMENT CONCRETE DRIVEWAY PAVEMENT, 8 INCH	SO YD	18	18			
42400200	PORTLAND CEMENT CONCRETE SIDEWALK, 5"	SQ FT	635	635			
44000200	DRIVEWAY PAVEMENT REMOVAL	SO YD	18	18			
44000600	SIDEWALK REMOVAL	SQ FT	635	635			
50102400	CONCRETE REMOVAL	CU YD	13.8	13.8			
44201341	CLASS C PATCHES, TYPE II, 9"	SQ YD	22	22			
50157300	PROTECTIVE SHIELD	SO YD	544	544			
50300255	CONCRETE SUPERSTRUCTURE	CU YD	14.3	14.3			
50300260	BRIDGE DECK GROOVING	SO YD	546	546			
50300300	PROTECTIVE COAT	SO YD	960	960			
50800205	REINFORCEMENT BARS, EPOXY COATED	POUND	1590	1590			
52000110	PREFORMED JOINT STRIP SEAL	FOOT	89.5	89.5			
60300105	FRAMES AND GRATES TO BE ADJUSTED	EACH	4	4			
60300305	FRAMES AND LIDS TO BE ADJUSTED	EACH	3	3			

SUMMARY OF QUANTITIES			90% FED 10% STATE TOTAL QUANTITY	CONSTRUCTION TYPE CODE			
CODE NO	ITEM	UNIT		ROADWAY 0013			
67100100	MOBILIZATION	L SUM	1	1			
70300240	TEMPORARY PAVEMENT MARKING - LINE 6"	FOOT	220	220			
70400100	TEMPORARY CONCRETE BARRIER	FOOT	325	325			1
<del>70400200</del>	<del>RELOCATE TEMPORARY CONCRETE BARRIER</del>	<del>FOOT</del>	<del>545</del>	<del>545</del>			
70600250	IMPACT ATTENUATORS, TEMPORARY (NON- REDIRECTIVE), TEST LEVEL 3	EACH	2	2			
<del>70600350</del>	<del>IMPACT ATTENUATORS, RELOCATE (NON- REDIRECTIVE), TEST LEVEL 3</del>	<del>EACH</del>	<del>4</del>	<del>4</del>			1
* 78000200	THERMOPLASTIC PAVEMENT MARKING - LINE 4"	FOOT	512	512			
* 78008210	POLYUREA PAVEMENT MARKING TYPE I - LINE 4"	FOOT	352	352			
* 78100100	RAISED REFLECTIVE PAVEMENT MARKER	EACH	14	14			
* 78200011	BARRIER WALL REFLECTORS, TYPE C	EACH	88	88			
78300200	RAISED REFLECTIVE PAVEMENT MARKER REMOVAL	EACH	22	22			
X0326766	CLEAN & RESEAL RELIEF JOINT	FOOT	52	52			

FILE NAME = c:\pwr_wor\pwr\tda\hem\j00595766\DM601-SH-plan.dgn	USER NAME = hemj	DESIGNED -	REVISED -	<b>STATE OF ILLINOIS DEPARTMENT OF TRANSPORTATION</b>	<b>SUMMARY OF QUANTITY STRUCTURE NO. 022-0149</b>	F.A.I. RTE. 290	SECTION 100HB-3-1-1	COUNTY	TOTAL SHEETS 17	SHEET NO. 3	
PLOT SCALE = 100.0000' / 1in.	CHECKED -	REVISED -	SCALE:			SHEET NO. OF SHEETS	STA. TO STA.	FED. ROAD DIST. NO. 1 ILLINOIS FED. AID PROJECT			
PLOT DATE = 12/13/2018	DATE -	REVISED -									

\*= SPECIALTY ITEM

p:\1\084EBID\INTEG\11mstrg\p\DOT\Documents\DOT\Offices\District\1\Projects\116011\Co00Data\Design\0116011-ahc-cover.dgn



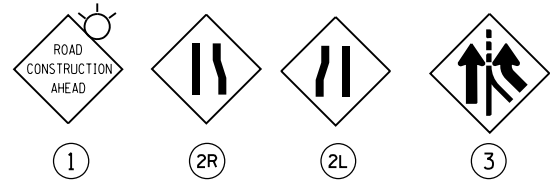
**STAGING NOTES**

**PRESTAGE A**

1. CLOSE 2 INSIDE LANES OF EASTBOUND I-290 IN ACCORDANCE WITH STD. 701400 AND 701446.
2. CLOSE 2 INSIDE LANES OF WESTBOUND I-290 IN ACCORDANCE WITH STD. 701400 AND 701446.
3. INSTALL TEMPORARY SHIELDING ON SN 022-0149 WITHIN WORK ZONE.

**PRESTAGE B**

- EB I-290**
1. CLOSE OUTSIDE LANE OF EASTBOUND I-290 AS SHOWN ON THE PLLANS AND IN ACCORDANCE WITH STD. 701400 AND 701401.
  2. CLOSE RIGHT LANE OF LAKE STREET/YORK ROAD ENTRANCE RAMP AS SHOWN ON THE PLANS AND IN ACCORDANCE WITH DISTRICT DETAIL TC-17.
  3. EXIT TO YORK ROAD TO REMAIN OPEN. INSTALL BARRICADES AND SIGNAGE PER STD. 701411.
- WB I-290**
1. CLOSE 2 OUTSIDE LANES OF WESTBOUND I-290 AS SHOWN ON THE PLANS AND IN ACCORDANCE WITH STD. 701400 AND 701446.
  2. CLOSE RIGHT LANE OF LAKE STREET/NORTH AVENUE ENTRANCE RAMP AS SHOWN ON THE PLANS AND IN ACCORDANCE WITH DISTRICT DETAIL TC-17.
  3. INSTALL TEMPORARY SHIELDING ON SN 022-0149 WITHIN WORK ZONE.



FILE NAME =	USER NAME = midyja	DESIGNED -	REVISED -  2/19/19
		DRAWN -	REVISED -
	PLOT SCALE = 200.0000' / in.	CHECKED -	REVISED -
	PLOT DATE = 2/19/2019	DATE -	REVISED -

**STATE OF ILLINOIS**  
**DEPARTMENT OF TRANSPORTATION**

**I-290**  
**MAINTENANCE OF TRAFFIC PRESTAGE**  
 SCALE: SHEET NO. 1 OF 1 SHEETS STA. TO STA.

F.A.I. RTE.	SECTION	COUNTY	TOTAL SHEETS	SHEET NO.
290	100HB-3-1-1	DuPAGE	17	6
			CONTRACT NO. 60M75	
ILLINOIS FED. AID PROJECT				