

URBAN

80% FED
20% STATE

SUMMARY OF QUANTITIES		CONSTRUCTION CODE TYPE:		TOTAL	0004	0013	0021	0044
CODE NO.	ITEM	UNIT	QUANTITY	ROADWAY	BRIDGE SN016-0533	SAFETY 100% VILLAGE	RETAINING WALL SN016-1391	
52200010	TEMPORARY SHEET PILING	SQ FT	2830			2830		
52200100	FURNISHING SOLDIER PILES (HP SECTION)	FOOT	1242				1242	
52200105	FURNISHING SOLDIER PILES (W SECTION)	FOOT	1370				1370	
52200200	DRILLING AND SETTING SOLDIER PILES (IN SOIL)	CU FT	14667				14667	
52200250	UNTREATED TIMBER LAGGING	SQ FT	3246				3,246	
550A0050	STORM SEWERS, CLASS A, TYPE 112"	FOOT	186	186				
550A0340	STORM SEWERS, CLASS A, TYPE 212"	FOOT	30	30				
550A0640	STORM SEWERS, CLASS A, TYPE 312"	FOOT	99	99				
55100500	STORM SEWER REMOVAL12"	FOOT	249	249				
58600101	GRANULAR BACKFILL FOR STRUCTURES	CU YD	407			407		
58700300	CONCRETE SEALER	SQ FT	1743			1743		
59000200	EPOXY CRACK INJECTION	FOOT	90			90		
59100100	GEOCOMPOSITE WALL DRAIN	SQ YD	447			216	231	
60108204	PIPE UNDERDRAINS, TYPE 2, 4"	FOOT	956	956				

▪ SPECIALTY
ITEMS



USER NAME = MS_USER	DESIGNED - LAB	REVISED -
	DRAWN - LCR	REVISED -
PLOT SCALE = *SCALE*	CHECKED - E.JL	REVISED -
PLOT DATE = 12/13/2018	DATE - 11/21/18	REVISED -

STATE OF ILLINOIS
DEPARTMENT OF TRANSPORTATION

SUMMARY OF QUANTITIES

SCALE: SHEET 5 OF 13 SHEETS STA. 96+61.4 TO STA. 103+52.5

F.A.P. RTE.	SECTION	COUNTY	TOTAL SHEETS	SHEET NO.
305	1920.01-BR	COOK	194	7
CONTRACT NO. 60N83				

ILLINOIS FED. AID PROJECT
REV. 2/22/19 REV. 1/16/19

GENERAL NOTES

- Fasteners shall be ASTM A325 Type 1, mechanically galvanized bolts. Bolts $\frac{7}{8}$ in dia., holes $\frac{15}{16}$ in dia., unless otherwise noted.
- Calculated weight of Structural Steel = 411,640 lbs.
- No field welding is permitted except as specified in the contract documents.
- Reinforcement bars designated (E) shall be epoxy coated.
- Prior to pouring the new concrete deck, all heavy or loose rust, loose mill scale, and other loose or potentially detrimental foreign material shall be removed from the surfaces in contact with concrete. Tightly adhered paint may remain unless otherwise noted. Removal shall be accomplished by methods that will not damage the steel and the cost will be included in the pay item covering removal of the existing concrete. As directed by the Engineer, existing construction accessories welded to the top flange of beams and girders shall be removed. The weld areas shall be ground flush and inspected for cracks using magnetic particle testing (MT) or dye penetrant testing (PT) by qualified personnel approved by the Engineer. Any cracks that cannot be removed by grinding $\frac{1}{4}$ in. deep shall be identified and reported to the Bureau of Bridges and Structures for further disposition. The cost of removing welded accessories, grinding and inspecting weld areas and grinding cracks will be paid for according to Article 109.04 of the Standard Specifications.
- Plan dimensions and details relative to existing plans are subject to nominal construction variations. The Contractor shall field verify existing dimensions and details affecting new construction and make necessary approved adjustments prior to construction or ordering of materials. Such variations shall not be cause for additional compensation for a change in scope of the work, however, the Contractor will be paid for the quantity actually furnished at the unit price bid for the work.
- Bearing seat surfaces shall be constructed or adjusted to the designated elevations within a tolerance of $\frac{1}{8}$ in. (0.01 ft). Adjustment shall be made either by grinding the surface or by shimming the bearings.
- Concrete Sealer shall be applied to the designated areas of the new concrete backwall, bridge seat and front face of pile cap of the abutments.
- The existing structural steel coating contains lead. The Contractor shall take appropriate precautions to deal with the presence of lead on this project.
- Organic Zinc/Epoxy/Urethane Paint System shall be used for shop and field painting of new structural steel except where otherwise noted. The color of the final finish coat for all interior steel surfaces shall be gray, Munsell No. 5B 7/1. The color of the final finish coat for the exterior and bottom flange of the fascia beams shall be Reddish Brown, Munsell No. 2.5 YR 3/4.
- The embankment configuration shown shall be the minimum that must be placed and compacted prior to construction of the abutments.
- Slipforming of the parapets is not allowed.
- The Contractor shall salvage the existing protective shielding and the existing aluminum railing including all posts, rails and fasteners. These items should be transported and unloaded by the Contractor to the District Bridge Yard in Elk Grove at 1101 Biesterfeld Road during the week days of Monday-Friday between the hours of 8 AM and 2 PM. The Contractor shall notify the District Bridge Office 48 hours in advance of the delivery at (847) 956-1444. Cost included in Removal of Existing Concrete Deck.

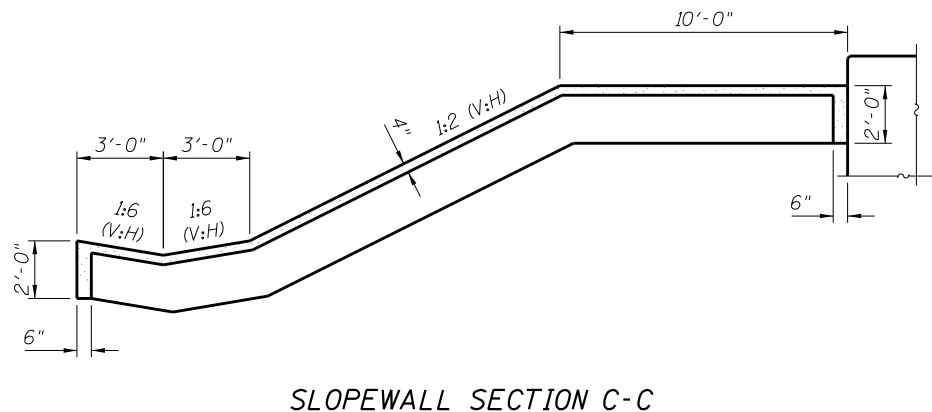
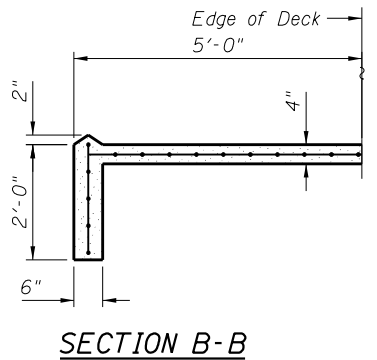
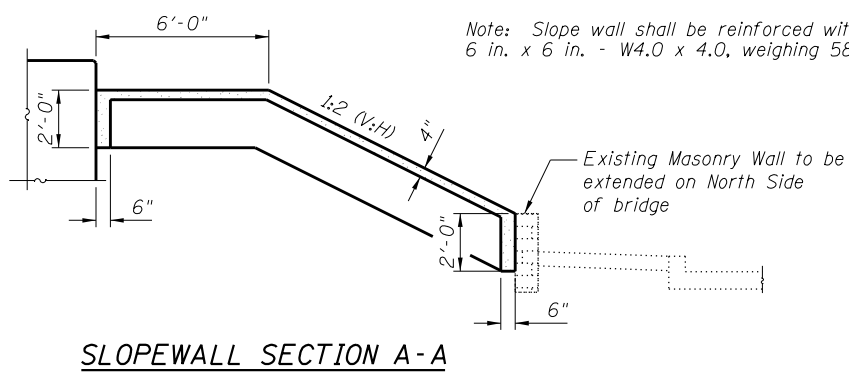
TOTAL BILL OF MATERIAL

ITEM	UNIT	SUPER	SUB	TOTAL
Concrete Removal	Cu Yd		50.9	50.9
Masonry Removal	Cu Yd		0.2	0.2
Removal of Existing Concrete Deck	Each	1		1
Protective Shield	Sq Yd	1,766		1,766
Structure Excavation	Cu Yd		961	961
Concrete Structures	Cu Yd		470.1	470.1
Concrete Superstructure	Cu Yd	1,130.0		1,130.0
Bridge Deck Grooving	Sq Yd	3,576		3,576
Protective Coat	Sq Yd	5,429		5,429
Concrete Superstructure (Approach Slab)	Cu Yd	350.5		350.5
Furnishing and Erecting Structural Steel	L Sum	1		1
Stud Shear Connectors	Each	19,074		19,074
Reinforcement Bars, Epoxy Coated	Pound	359,560	66,630	426,190
Bar Splicers	Each	2,074	450	2,524
Bridge Fence Railing	Foot	673		673
Parapet Railing	Foot	348		348
Slope Wall 4 Inch	Sq Yd		1,576	1,576
Furnishing Metal Shell Piles 14" x 0.250"	Foot		2,409	2,409
Driving Piles	Foot		2,409	2,409
Test Pile Metal Shells	Each		4	4
Name Plates	Each	1		1
Preformed Joint Strip Seal	Foot	274		274
Elastomeric Bearing Assembly, Type I	Each	34		34
Elastomeric Bearing Assembly, Type II	Each	17		17
Anchor Bolts, $\frac{5}{8}$ "	Each	136		136
Anchor Bolts, $1\frac{1}{4}$ "	Each	44		44
Temporary Sheet Piling	Sq Ft		2,830	2,830
Concrete Sealer	Sq Ft		1,743	1,743
Epoxy Crack Injection	Foot		90	90
Geocomposite Wall Drain	Sq Yd		216	216
Conduit Embedded in Structure, 2 $\frac{1}{2}$ " Dia., PVC	Foot	353		353
Junction Box, Stainless Steel, Embedded in Structure, 18"x18"x6"	Each	2		2
Cleaning and Painting Steel Bridge No. 1	L Sum	1		1
Granular Backfill for Structures	Cu Yd		407	407
Jack and Remove Existing Bearings	Each	36		36
Approach Slab Removal	Sq Yd	361		361
Drainage System	L Sum	1		1
Containment and Disposal of Lead Paint Cleaning Residues	L Sum	1		1
Cleaning Bridge Seats	Sq Ft		378	378
Structural Repair of Concrete (Depth equal to or less than 5 inches)	Sq Ft		56	56
Structural Repair of Concrete (Depth Greater Than 5")	Sq Ft		44	44
Drainage Scuppers, DS-12	Each	11		11
Masonry Wall Construction	Sq Ft		132	132
Pipe Underdrains For Structures, 4"	Foot		358	358

INDEX OF SHEETS

- General Plan
- General Data 1
- General Data 2
- Stage Construction
- Temporary Concrete Barrier for Stage Construction
- Top of Slab Elevations 1
- Top of Slab Elevations 2
- Top of Slab Elevations 3
- Top of Slab Elevations 4
- Top of Slab Elevations 5
- West Approach Top of Slab Elevations
- East Approach Top of Slab Elevations
- Superstructure 1
- Superstructure 2
- Superstructure Details 1
- Superstructure Details 2
- Superstructure Details 3
- Superstructure Details 4
- Drainage Scupper, DS-12
- Bridge Approach Slab Details 1
- Bridge Approach Slab Details 2
- Bridge Approach Slab Details 3
- Parapet Railing
- Bridge Fence Railing, Parapet Mounted
- Preformed Joint Strip Seal-Sidewalk 1
- Preformed Joint Strip Seal-Sidewalk 2
- Preformed Joint Strip Seal-Sidewalk 3
- Framing Plan
- Structural Steel Details 1
- Structural Steel Details 2
- West Abutment Bearing Details
- East Abutment Bearing Details
- Pier Bearing Details
- Existing Abutment Removal Details
- West Abutment Elevation
- West Abutment Top View
- West Abutment Pile Cap Plan
- East Abutment Elevation
- East Abutment Top View
- East Abutment Pile Cap Plan
- West Abutment Details
- East Abutment Details
- Abutment Details
- Pier Repair Details
- Pier 1
- Pier 2
- Masonry Wall
- Drainage System
- Bar Splicer Assembly and Mechanical Splicer Details
- Metal Shell Pile Details
- Boring Logs 1
- Boring Logs 2
- Boring Logs 3
- Boring Logs 4
- Boring Logs 5
- Boring Logs 6
- Boring Logs 7

- Cleaning and painting of the existing structural steel shall be as specified in the special provision for "Cleaning and Painting Existing Steel Structures". All existing steel shall be cleaned per Near White Blast Cleaning-SSPC-SP10. All existing steel shall be painted according to the requirements of Paint System 1-Organic Zinc / Epoxy / Urethane. The color of the final finish coat for all interior steel surfaces shall be Gray, Munsell No 5B 7/1.
- A minimum of 4 air monitors will be required to monitor abrasive blasting operations at this site. See special provision for "Containment and Disposal of Lead Paint Cleaning Residues."



STATION 100+07.18
REBUILT 201. BY
STATE OF ILLINOIS
F.A.P. RT. 305
SEC. 1920.01-BR
LOADING HS20-44
STR. NO. 016-0533

NAME PLATE
See Std. 515001

Existing Name Plate shall be cleaned and relocated next to the new Name Plate. Cost included with Name Plates.

FILED

MILHOUSE	USER NAME = *USER*	DESIGNED - LAS	REVISED - Δ DAZ-2/21/19	STATE OF ILLINOIS DEPARTMENT OF TRANSPORTATION	GENERAL DATA 1 STRUCTURE NO. 016-0533	F.A.P. RTE. 305	SECTION 1920.01-BR	COUNTY COOK	TOTAL SHEETS 194	SHEET NO. 46
	PLOT SCALE = *SCALE*	DRAWN - TCS	REVISED -			CONTRACT NO. 60N83				
	PLOT DATE = 2/21/19	CHECKED - LAS	REVISED -	SHEET NO. 2 OF 57 SHEETS			ILLINOIS FED. AID PROJECT			