

INDEX OF SHEETS

SHEET NO.	DESCRIPTION	STANDARD NO.
1	COVER SHEET	BD-32
2	INDEX OF SHEETS, HIGHWAY STANDARDS AND GENERAL NOTES	TC-11
3	ALIGNMENT, TIES, AND BENCHMARKS	TC-12
4-8A	SUMMARY OF QUANTITIES	TC-13
9-14	MAINTENANCE OF TRAFFIC	TC-22
15-16	PAVEMENT MARKING PLANS	
	BRIDGE STRUCTURE 022-0155	
17	GENERAL PLAN AND ELEVATION	
18	GENERAL STRUCTURAL DATA	
19	STAGE CONSTRUCTION DETAILS	
20	BRIDGE DECK REPAIRS	
21	SOUTH ABUTMENT EXPANSION JOINT DETAILS	
22	NORTH ABUTMENT EXPANSION JOINT DETAILS	
23-25	PREFORMED JOINT STRIP SEAL	
26	FRAMING PLAN	
27	PPC I-BEAM REPAIR	
28	ABUTMENT AND SLOPE WALL REPAIRS	
29	BAR SPLICER ASSEMBLY AND MECHANICAL SPLICER DETAILS	
	BRIDGE STRUCTURE 022-0157	
30	GENERAL PLAN AND ELEVATION	
31	GENERAL STRUCTURAL DATA	
32	STAGE CONSTRUCTION DETAILS	
33	BRIDGE DECK REPAIRS	
34	SOUTH ABUTMENT EXPANSION JOINT DETAILS	
35	SOUTH ABUTMENT EXPANSION JOINT DETAILS	
36	NORTH ABUTMENT EXPANSION JOINT DETAILS	
37	NORTH ABUTMENT EXPANSION JOINT DETAILS	
38	PREFORMED JOINT STRIP SEAL	
39	PPC I-BEAM REPAIR	
40	BEARING DETAILS - ABUTMENTS	
41	ABUTMENT AND SLOPE WALL REPAIRS	
42	PIER REPAIRS	
43	BAR SPLICER ASSEMBLY AND MECHANICAL SPLICER DETAILS	
44-45	TRANSITION DETAILS	
46-51	DISTRICT DETAILS	

DISTRICT ONE DETAILS

STANDARD NO.	DESCRIPTION
BD-32	BUTT JOINT AND HMA TAPER DETAILS
TC-11	TYPICAL APPLICATIONS RAISED REFLECTIVE PAVEMENT MARKERS (SNOW-PLOW RESISTANT)
TC-12	MULTI-LANE FREEWAY PAVEMENT MARKINGS
TC-13	DISTRICT ONE TYPICAL PAVEMENT MARKINGS
TC-22	ARTERIAL ROAD INFORMATION SIGN

GENERAL NOTES

- BEFORE STARTING ANY EXCAVATION, THE CONTRACTOR SHALL CALL "JULIE" AT (800) 892-0123 OR 811 FOR FIELD LOCATIONS OF BURIED ELECTRIC, TELEPHONE, AND GAS FACILITIES (48 HOURS NOTIFICATION REQUIRED).
- NO CONSTRUCTION SHALL BEGIN UNTIL ALL PROPER TEMPORARY SIGNS AND BARRICADES HAVE BEEN INSTALLED.
- THE CONTRACTOR SHALL COORDINATE CONSTRUCTION ACTIVITIES WITH UTILITY COMPANIES AND THE LOCAL MUNICIPALITY.
- THE CONTRACTOR SHALL BE RESPONSIBLE FOR THE PROTECTION OF ALL UNDERGROUND OR SURFACE UTILITIES EVEN THOUGH THEY MAY NOT BE SHOWN ON PLANS. ANY UTILITY THAT IS DAMAGED DURING CONSTRUCTION SHALL BE REPLACED TO THE SATISFACTION OF THE ENGINEER AT THE CONTRACTOR'S OWN EXPENSE.
- THE CONTRACTOR WILL NOT BE ALLOWED TO SET UP A YARD OR FIELD OFFICE ON STATE PROPERTY WITHOUT WRITTEN PERMISSION FROM THE DEPARTMENT.
- IT SHALL BE THE CONTRACTOR'S RESPONSIBILITY TO VERIFY ALL DIMENSIONS AND CONDITIONS EXISTING IN THE FIELD PRIOR TO CONSTRUCTION AND ORDERING OF MATERIALS.
- DO NOT SCALE PLANS FOR CONSTRUCTION DIMENSIONS.
- THE CONTRACTOR SHALL CONTACT THE DISTRICT ONE TRAFFIC CONTROL SUPERVISOR AT (847) 705-4470 A MINIMUM OF 72 HOURS IN ADVANCE OF BEGINNING WORK.
- BEFORE BEGINNING ANY WORK, THE CONTRACTOR SHALL RETAIN AND RECORD FOR FUTURE REFERENCE, ALL EXISTING PAVEMENT MARKING LINES (AND RAISED REFLECTIVE PAVEMENT MARKERS) IN ORDER THAT THESE LOCATIONS CAN BE RE-ESTABLISHED FOR STRIPING. EXACT LOCATIONS OF ALL PAVEMENT MARKINGS SHALL BE AS DIRECTED BY THE ENGINEER.
- PLAN DIMENSIONS AND DETAILS RELATIVE TO EXISTING PLANS ARE SUBJECT TO FIELD VARIATION. THE CONTRACTOR SHALL FIELD VERIFY EXISTING DIMENSIONS AND DETAILS AFFECTING NEW CONSTRUCTION OR ORDERING MATERIALS. SUCH VARIATION SHALL NOT BE CAUSE FOR ADDITIONAL COMPENSATION FOR A CHANGE IN THE SCOPE OF WORK. HOWEVER, THE CONTRACTOR WILL BE PAID FOR QUANTITY ACTUALLY FURNISHED BASED AT THE UNIT PRICE BID FOR THE WORK.
- UNLESS OTHERWISE NOTED IN THE PLANS OR CONTRACT SPECIFICATIONS, THE CONTRACTOR SHALL SURVEY THE TOP OF RAIL OF EACH RAILROAD TRACK A MINIMUM OF 1000-FT ON EACH SIDE OF THE OVERPASS STRUCTURE IN 50' INCREMENTS BEFORE BEGINNING CONSTRUCTION. IN ADDITION, UPON COMPLETION OF STRUCTURE 022-0155, THE CONTRACTOR SHALL MEASURE THE RESULTING HORIZONTAL AND VERTICAL CLEARANCES AND SUBMIT THEM TO THE ENGINEER FOR REVIEW AND INCLUSION IN THE RECORD DRAWINGS. THIS WORK SHALL BE INCLUDED IN THE COST OF CONSTRUCTION LAYOUT).
- PROTECTIVE SHIELD SHALL BE INSTALLED IN ALL AREAS INVOLVING CONCRETE REMOVAL TO PREVENT DEBRIS FROM ENTERING RAILROAD OR ROADWAY RIGHT OF WAY. THE LOCATIONS SHALL BE REVIEWED AND APPROVED BY THE ENGINEER PRIOR TO CONCRETE REMOVAL.
- ALL SAW CUTTING REQUIRED SHALL BE INCLUDED IN THE CORRESPONDING REMOVAL PAY ITEMS AND SHALL BE PERFORMED PRIOR TO BEGINNING REMOVALS.
- THE ENGINEER SHALL CONTACT DON CHIARUGI, IDOT'S AREA TRAFFIC FIELD ENGINEER, VIA E-MAIL AT DON.CHIARUGI@ILLINOIS.GOV, A MINIMUM OF TWO (2) WEEKS PRIOR TO THE PLACEMENT OF PERMANENT PAVEMENT MARKINGS.
- THE CONTRACTOR SHALL CONTACT THE ROADSIDE DEVELOPMENT UNIT AT (847)705-4171 AT LEAST 2 WEEKS PRIOR TO BEGINNING ANY FORESTRY WORK FOR LAYOUT.

HIGHWAY STANDARDS

STANDARD NO.	DESCRIPTION
000001-07	STANDARD SYMBOLS, ABBREVIATIONS AND PATTERNS
606101-05	TYPE A GUTTER (INLET, OUTLET & ENTRANCE)
701101-05	OFF-RD OPERATIONS, MULTILANE, 15' TO 24" FROM PAVEMENT EDGE
701411-09	LANE CLOSURE, MULTILANE, AT ENTRANCE OR EXIT RAMP, FOR SPEEDS ≥ 45 MPH
701416-11	LANE CLOSURE, FREEWAY / EXPRESSWAY, WITH CROSSOVER AND BARRIER
701421-08	LANE CLOSURE, MULTILANE, DAY OPERATIONS ONLY, FOR SPEEDS ≥ 45 MPH TO 55 MPH
701422-10	LANE CLOSURE, MULTILANE, FOR SPEEDS ≥ 45 MPH TO 55 MPH
701426-09	LANE CLOSURE, MULTILANE, INTERMITTENT OR MOVING OPER., FOR SPEEDS ≥ 45 MPH
701901-08	TRAFFIC CONTROL DEVICES
704001-08	TEMPORARY CONCRETE BARRIER
782006	GUARDRAIL AND BARRIER WALL REFLECTOR MOUNTING DETAILS

MIXTURES TABLE

HOT-MIX ASPHALT MIXTURE REQUIREMENTS			
OPERATION	MIXTURE TYPE	AIR VOIDS @ NDES	QUALITY MANAGEMENT PROGRAM (QMP)
PAVEMENT AND SHOULDER RESURFACING	HMA SURFACE COURSE, MIX "D", N70, (IL 9.5 mm), 1¾"	4% @ 70 GYR.	QC/QA
	LEVELING BINDER (MACHINE METHOD), N70, (IL 9.5 mm), ¾"	4% @ 70 GYR.	QC/QA
TEMPORARY PAVEMENT	TEMP PAVEMENT (HMA BINDER IL-19.0), 12"	4% @ 70 GYR.	QC/QA

QMP DESIGNATIONS: QUALITY CONTROL/QUALITY ASSURANCE (QC/QA);

NOTES:

- THE UNIT WEIGHT USED TO CALCULATE ALL HMA SURFACE MIXTURE QUANTITIES IS 112 LBS/SQ YD/IN.
- THE "AC TYPE" FOR POLYMERIZED HMA MIXES SHALL BE "SBS/SBR PG 76-22" AND FOR NON -POLYMERIZED HMA THE "AC TYPE" SHALL BE "PG 64-22" UNLESS MODIFIED BY DISTRICT ONE SPECIAL PROVISIONS.
- FOR USE OF RECYCLED MATERIALS SEE SPECIAL PROVISIONS.
- QUALITY MANAGEMENT PROGRAM (QMP) IDENTIFIES THE PARTICULAR QUALITY CONTROL SPECIFICATION THAT APPLIES TO THE HMA MIXTURE.
- THE PCC TEMPORARY PAVEMENT OPTION SHALL CONSIST OF CLASS PV CONCRETE MEETING THE REQUIREMENTS OF SECTION 1020 OF THE STANDARD SPECIFICATIONS; THICKNESS SHALL BE 10". TEMPORARY PCC PAVEMENT DOES NOT REQUIRE DOWEL BARS. ALL TEMPORARY PAVEMENT SHALL BE PROVIDED OVER A 4" SUBBASE GRANULAR MATERIAL, TYPE B.

MODEL: \$MODELNAME\$. FILE: \$NAME\$. D:\2019\11\26\11-26-2019\11-26-2019.dgn

CHASTAIN & ASSOCIATES LLC
CONSULTING ENGINEERS
184-001397

USER NAME = _USER_	DESIGNED - JKP	REVISED - 2/25/2019
DRAWN - DMW	CHECKED - SPF	REVISED -
PLOT SCALE = 2.0000' / in.	DATE - 11-02-2018	REVISED -
PLOT DATE = 2/25/2019		

STATE OF ILLINOIS
DEPARTMENT OF TRANSPORTATION

IL 83 OVER US 34 & BNSF - BRIDGE DECK OVERLAY AND JOINT REPAIR
INDEX OF SHEETS, STATE STANDARDS AND GENERAL NOTES

SCALE: SHEET OF SHEETS STA. TO STA.

F.A.P. RTE.	SECTION	COUNTY	TOTAL SHEETS	SHEET NO.
344	20 B 04 1-BD&BR	D PAGE	51	2
SN 022-0155 & SN 022-0157		CONTRACT NO. 62H01		
ILLINOIS FED. AID PROJECT				

CODE NO.	ITEM	UNIT	TOTAL QUANTITY	CONSTRUCTION CODE		
				NHPP FUNDS		
				80% FED 20% STATE		80% FED 20% STATE
				STRUCTURES		STRUCTURE
				0013		0013
				1L 83		022-0157
20100110	TREE REMOVAL (6 TO 15 UNITS DIAMETER)	UNIT	10.5	10.5		
20200100	EARTH EXCAVATION	CU YD	39	25		14
28000510	INLET FILTERS	EACH	1	1		
28100125	STONE RIPRAP, CLASS B3	SQ YD	10	10		
28200200	FILTER FABRIC	SQ YD	10	10		
31101200	SUBBASE GRANULAR MATERIAL, TYPE B, 4"	SQ YD	231	148		83
40600290	BITUMINOUS MATERIALS (TACK COAT)	POUND	171	171		
40600635	LEVELING BINDER (MACHINE METHOD), N70	TON	60	60		
40600982	HOT-MIX ASPHALT SURFACE REMOVAL - BUTT JOINT	SQ YD	925	925		
40600985	PORTLAND CEMENT CONCRETE SURFACE REMOVAL - BUTT JOINT	SQ YD	56	56		
40603340	HOT-MIX ASPHALT SURFACE COURSE, MIX "D", N70	TON	140	140		
44000152	HOT-MIX ASPHALT SURFACE REMOVAL, 3/4"	SQ YD	1,137	1,137		
44000400	GUTTER REMOVAL	FOOT	637	637		
44000100	PAVEMENT REMOVAL	SQ YD	240	240		
44004250	PAVED SHOULDER REMOVAL	SQ YD	30	30		
44000500	COMBINATION CURB AND GUTTER REMOVAL	FOOT	82	82		
48300300	PORTLAND CEMENT CONCRETE SHOULDERS 8"	SQ YD	30	30		

* = SPECIALTY ITEMS

MODEL: \$MODELNAME
FILE NAME: D:\2018\184\184-S001.dgn



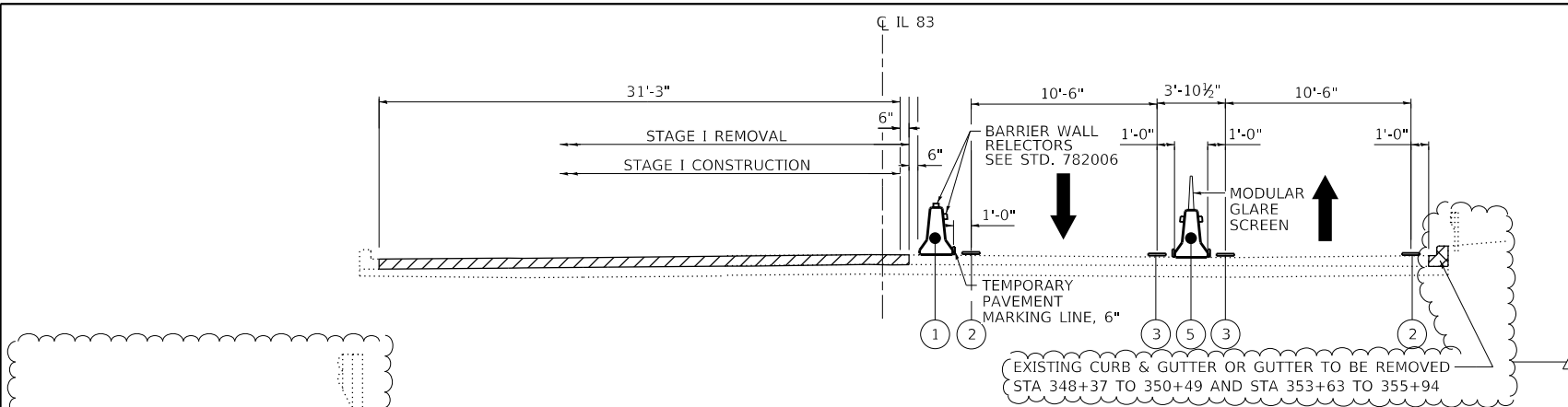
USER NAME = _USER_	DESIGNED - JKP	REVISED -
	DRAWN - DMW	REVISED -
PLOT SCALE = 2.0000' / in.	CHECKED - SPF	REVISED -
PLOT DATE = 12/13/2018	DATE - 11-02-2018	REVISED -

**STATE OF ILLINOIS
DEPARTMENT OF TRANSPORTATION**

**IL 83 OVER US 34 & BNSF - BRIDGE DECK OVERLAY AND JOINT REPAIR
SUMMARY OF QUANTITIES**

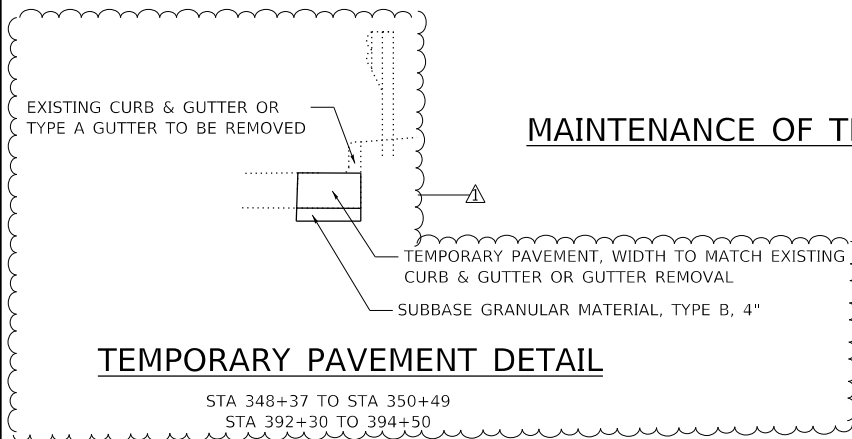
SCALE: SHEET 1 OF 6 SHEETS STA. TO STA.

F.A.P. RTE.	SECTION	COUNTY	TOTAL SHEETS	SHEET NO.
344	2018-041-BD&BJR	DuPAGE	51	4
SN 022-0155 & SN 022-0157		CONTRACT NO. 62H01		
ILLINOIS FED. AID PROJECT				

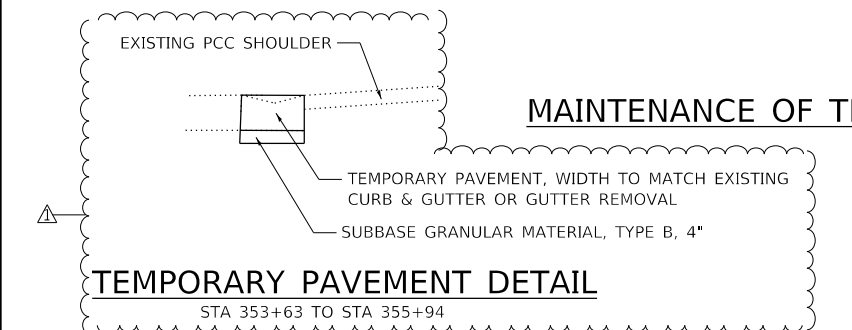


MAINTENANCE OF TRAFFIC ROADWAY TYPICAL SECTION STAGE I

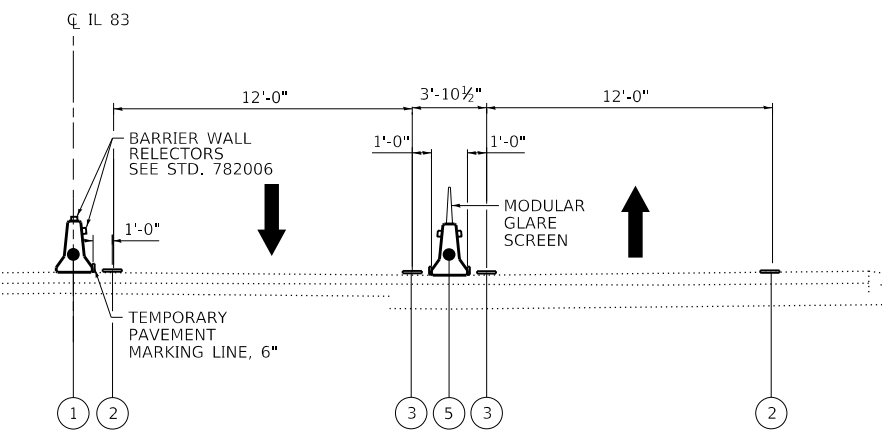
STRUCTURE 022-0155 (OVER BNSF)
LOOKING NORTH



TEMPORARY PAVEMENT DETAIL

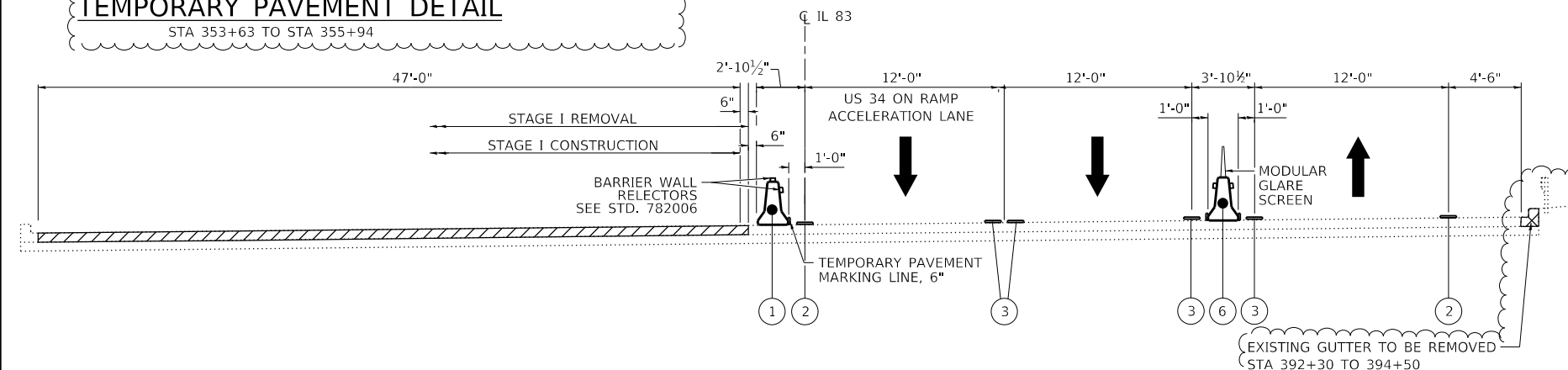


TEMPORARY PAVEMENT DETAIL



MAINTENANCE OF TRAFFIC ROADWAY TYPICAL SECTION STAGE I

IL 83 STA. 361+57 TO STA 384+30
LOOKING NORTH



MAINTENANCE OF TRAFFIC ROADWAY TYPICAL SECTION STAGE I

STRUCTURE 022-0157 (OVER US 34)
LOOKING NORTH

MAINTENANCE OF TRAFFIC LEGEND

- ① RELOCATE TEMPORARY CONCRETE BARRIER, STATE OWNED
- ② PAVEMENT MARKING TAPE, TYPE IV - LINE 4" (WHITE)
- ③ PAVEMENT MARKING TAPE, TYPE IV - LINE 4" (YELLOW)
- ④ PAVEMENT MARKING TAPE, TYPE IV - LINE 4" (WHITE SKIP DASH - 2' DASH, 6' SKIP)
- ⑤ TEMPORARY CONCRETE BARRIER
- ⑥ RELOCATE TEMPORARY CONCRETE BARRIER

SUGGESTED SEQUENCE OF CONSTRUCTION & MAINTENANCE OF TRAFFIC

STAGE I

1. INSTALL ADVANCED WIDTH RESTRICTION SIGNAGE, REMOVE CURB AND GUTTER AS SHOWN IN PLAN, INSTALL TEMPORARY PAVEMENT, RELOCATE EXISTING TEMPORARY CONCRETE BARRIER (STATE OWNED), AND INSTALL ADDITIONAL TEMPORARY CONCRETE BARRIER UTILIZING STANDARD 701422-10.
2. INSTALL STAGE I TRAFFIC CONTROL ALONG IL ROUTE 83. SHIFT TRAFFIC TO NORTH BOUND LANES TO STAGE I TRAFFIC LANES.
3. PERFORM BRIDGE REPAIRS ON WEST SIDE ABUTMENTS, PIERS, BEAMS, AND BEARINGS.
4. COMPLETE BRIDGE DECK PATCHING, JOINT REPLACEMENT, HMA MILLING, BUTT JOINTS, OVERLAY APPROACH SLAB, SLOPE WALL REPAIR, AND SCARIFYING AND LATEX CONCRETE OVERLAY.

STAGE II

1. RELOCATE STAGE II TRAFFIC CONTROL ON IL ROUTE 83 AND REMOVE STAGE I TRAFFIC CONTROL DEVICES. SHIFT TRAFFIC TO SOUTH BOUND LANES TO STAGE II TRAFFIC LANES.
2. PERFORM EAST SIDE BRIDGE REPAIRS ON ABUTMENTS, PIERS, BEAMS, AND BEARINGS.
3. COMPLETE BRIDGE DECK PATCHING, JOINT REPLACEMENT, HMA MILLING, BUTT JOINTS, OVERLAY APPROACH SLAB, SLOPE WALL REPAIR, AND SCARIFYING AND LATEX CONCRETE OVERLAY.
4. REMOVE STAGE II TRAFFIC CONTROL DEVICES. SHIFT TRAFFIC BACK TO NORMAL LANES ALONG IL ROUTE 83.
5. RELOCATE TEMPORARY CONCRETE BARRIER (STATE OWNED) BACK TO CENTER MEDIAN LOCATION, REMOVE TEMPORARY PAVEMENT, AND INSTALL CURB AND GUTTER.
6. COMPLETE PERMANENT PAVEMENT MARKING ALONG IL ROUTE 83 UTILIZING DAYTIME LANE CLOSURES.

MAINTENANCE OF TRAFFIC GENERAL NOTES:

1. THE TRAFFIC CONTROL DEPICTED HEREIN IS THE MINIMUM REQUIREMENT. ADDITIONAL TRAFFIC CONTROL DEVICES AS SPECIFIED IN THE HIGHWAY STANDARDS AS SHOWN IN THE INDEX OF SHEETS AND THE SPECIAL PROVISIONS SHALL BE PLACED BY THE CONTRACTOR TO THE SATISFACTION OF THE ENGINEER. ALL TRAFFIC CONTROL DEVICES SHALL BE CONSIDERED INCLUDED IN THE COST OF TRAFFIC CONTROL AND PROTECTION, (SPECIAL) UNLESS OTHERWISE INDICATED WITHIN THESE GENERAL NOTES, PLANS OR SPECIAL PROVISIONS.
2. THE CONTRACTOR SHALL FURNISH, INSTALL, MAINTAIN AND REMOVE ALL SIGNS AND SIGN SUPPORTS REQUIRED FOR MAINTENANCE OF TRAFFIC.
3. THE CONTRACTOR SHALL BE RESPONSIBLE FOR PROVIDING LABOR, SIGNS AND TRAFFIC CONTROL DEVICES NECESSARY FOR THE MAINTENANCE OF TRAFFIC UNLESS NOTED OTHERWISE IN THE SPECIAL PROVISIONS.
4. THE CONTRACTOR SHALL CONTACT THE DISTRICT ONE TRAFFIC CONTROL SUPERVISOR AT (847) 705-4470 A MINIMUM OF 72 HOURS IN ADVANCE OF BEGINNING THE WORK.
5. IN ADVANCE OF ALL STAGE CHANGES ON IL ROUTE 83, THE CONTRACTOR SHALL PLACE ONE (1) PORTABLE CHANGEABLE MESSAGE SIGN AT EACH END OF THE PROJECT ALONG IL ROUTE 83 AS DIRECTED AT A LOCATION DESIGNATED BY THE ENGINEER TO INFORM MOTORISTS OF THE UPCOMING STAGE CHANGE ON IL ROUTE 83. THE MESSAGE SHALL BE APPROVED BY THE ENGINEER.
6. ALL EXISTING SIGNS THAT CONFLICT WITH THE TRAFFIC CONTROL PLAN SHALL BE COVERED OR REMOVED IN ACCORDANCE WITH ARTICLE 107.25 OF THE STANDARD SPECIFICATIONS.
7. THE CONTRACTOR SHALL BE REQUIRED TO REMOVE ALL EXISTING PAVEMENT MARKINGS WHICH CONFLICT WITH THE DESIGNATED TRAFFIC CONTROL PLAN.
8. THE CONTRACTOR SHALL BE REQUIRED TO MAINTAIN TRAFFIC IN ACCORDANCE WITH THE MAINTENANCE OF TRAFFIC PLANS, SPECIAL PROVISIONS, APPLICABLE STATE STANDARDS, AND AS DIRECTED BY THE ENGINEER. ANY CHANGES TO THE MAINTENANCE OF TRAFFIC SHALL BE SUBMITTED TO THE ENGINEER FOR APPROVAL PRIOR TO IMPLEMENTING ANY CHANGES.
9. TRAFFIC CONDITIONS, ACCIDENTS, AND OTHER UNFORESEEN EMERGENCY CONDITIONS MAY REQUIRE THE ENGINEER TO RESTRICT, MODIFY OR REMOVE LANE CLOSURES OR CHANNELIZATION SHOWN IN THE PLANS. THE CONTRACTOR SHALL PROMPTLY RESPOND AT THE TIME OF NOTIFICATION BY THE ENGINEER FOR THE MAINTENANCE OF TRAFFIC CONTROL DEVICES.
10. THE ENGINEER SHALL BE INFORMED A MINIMUM OF 48 HOURS IN ADVANCE OF ANY PROPOSED CHANGE TO THE SUGGESTED STAGES OF CONSTRUCTION AND TRAFFIC CONTROL PLAN.
11. ALL TEMPORARY PAVEMENT MARKINGS SHOWING DETERIORATION AFTER SEVEN (7) DAYS OF SERVICE SHALL BE REPLACED BY THE CONTRACTOR AS DIRECTED BY THE ENGINEER. ALL MARKINGS THAT REQUIRE REPLACEMENT PRIOR TO SEVEN (7) DAYS OF SERVICE SHALL BE REPLACED BY THE CONTRACTOR AT HIS EXPENSE.
12. WHEN THEY ARE NO LONGER NECESSARY, ALL TRAFFIC CONTROL DEVICES SHALL IMMEDIATELY BE REMOVED, COVERED OR TURNED AWAY FROM TRAFFIC. WHEN A SIGN IS COVERED, ITS POST SHALL HAVE A REFLECTIVE 3" X 6" DELINEATOR INSTALLED. THE COST OF THE DELINEATOR IS INCLUDED IN THE COST OF TRAFFIC CONTROL AND PROTECTION, (SPECIAL).
13. TEMPORARY CONCRETE BARRIERS AND TEMPORARY IMPACT ATTENUATORS SHALL BE PLACED AS SHOWN IN THE PLANS. EXISTING TEMPORARY CONCRETE BARRIERS ALONG MEDIAN SHALL BE USED AS TEMPORARY CONCRETE BARRIERS ALONG WORK ZONE AND AS SHOWN IN THE PLANS. THIS WORK SHALL BE PAID FOR AS RELOCATE TEMPORARY CONCRETE BARRIER, STATE OWN. EXISTING TEMPORARY CONCRETE BARRIERS NOT BEING USED SHALL BE TEMPORARY RELOCATED TO UNUSED AREA AND APPROVED BY THE ENGINEER. THIS WORK SHALL BE PAID FOR AS RELOCATE TEMPORARY CONCRETE BARRIER, SPECIAL. TEMPORARY CONCRETE BARRIERS SEPARATING OPPOSING TRAFFIC SHALL UTILIZE NEW TEMPORARY CONCRETE BARRIERS AND SHALL BE PAID FOR AS TEMPORARY CONCRETE BARRIER AND RELOCATE TEMPORARY CONCRETE BARRIER. ALL EXISTING TEMPORARY CONCRETE BARRIERS SHALL BE RELOCATED BACK TO EXISTING MEDIAN LOCATION AFTER COMPLETION OF CONSTRUCTION. FURNISHING, INSTALLING AND RELOCATING TEMPORARY CONCRETE BARRIER AND TEMPORARY IMPACT ATTENUATORS SHALL BE IN ACCORDANCE WITH IDOT SPECIAL PROVISIONS, IDOT HIGHWAY STANDARDS, STANDARD SPECIFICATIONS, AND AS DIRECTED BY THE ENGINEER.
14. IMMEDIATELY AFTER THE COMPLETION OF CONSTRUCTION, THE CONTRACTOR SHALL RESTORE ALL PERMANENT PAVEMENT MARKINGS, SIGNS, AND OTHER TRAFFIC CONTROL DEVICES THAT WERE COVERED, REMOVED, DAMAGED OR OTHERWISE AFFECTED BY CONSTRUCTION.
15. FULL ACCESS THROUGH HINSDALE AVENUE UNDER THE IL 83 BRIDGE MUST BE MAINTAINED THROUGHOUT CONSTRUCTION.
16. CONSTRUCTION ACTIVITIES CAN ONLY TAKE PLACE BETWEEN 8AM - 8PM (MONDAY TO FRIDAY) AND 9AM - 4PM (SATURDAY). NO CONSTRUCTION ACTIVITIES ALLOWED ON SUNDAY AND HOLIDAYS. ANY NIGHT WORK MUST BE APPROVED BY THE VILLAGE BOARD OF TRUSTEES AND THE VILLAGE MANAGER. WRITTEN REQUEST MUST BE SUBMITTED 60 DAYS PRIOR TO START OF WORK.

MODEL: STAGE I TYPICAL SECTIONS.dgn
FILE: \\nas01\p02\022-0157\p02\022-0157-0157-0157-0157.dgn



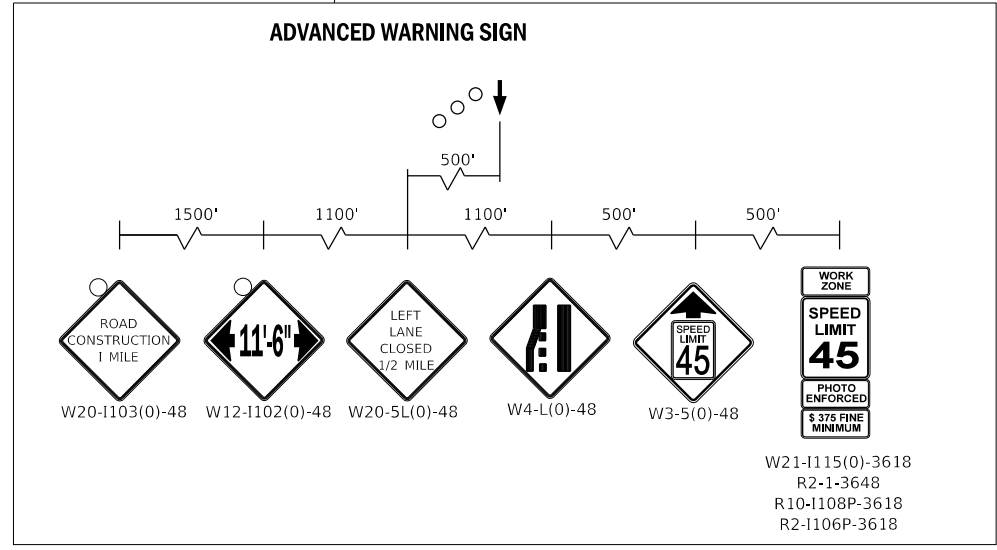
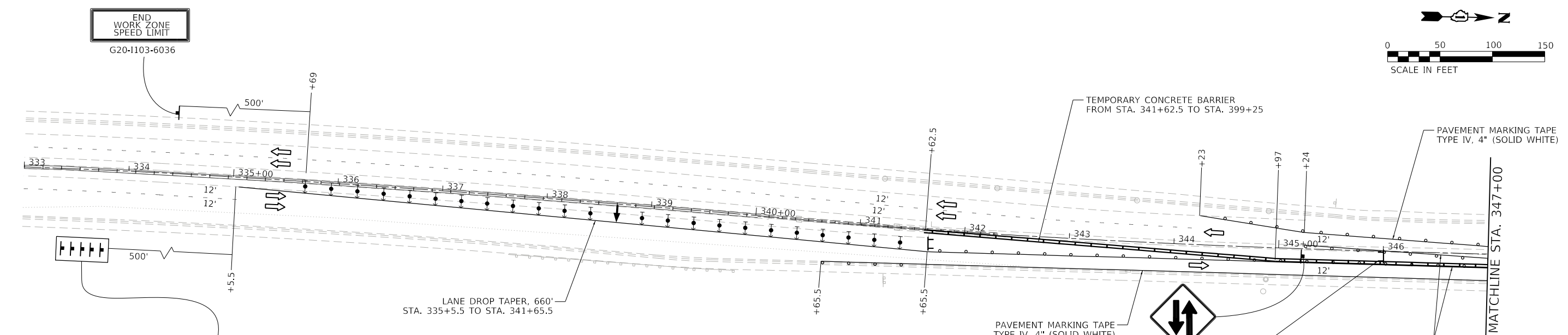
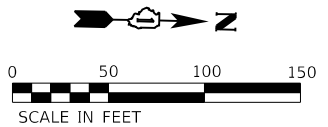
USER NAME = _USER_	DESIGNED - JKP	REVISED - 2/25/2019
PLOT SCALE = 20.0000' / in.	DRAWN - DMW	REVISED -
PLOT DATE = 2/26/2019	CHECKED - SPF	REVISED -
	DATE - 11-02-2018	REVISED -

**STATE OF ILLINOIS
DEPARTMENT OF TRANSPORTATION**

**IL 83 OVER BNSF AND US 34 (OGDEN AVE.)
BRIDGE DECK OVERLAY AND BRIDGE JOINT REPAIR
MAINTENANCE OF TRAFFIC - STAGE I TYPICAL SECTIONS**

SCALE: SHEET 1 OF 6 SHEETS STA. TO STA.

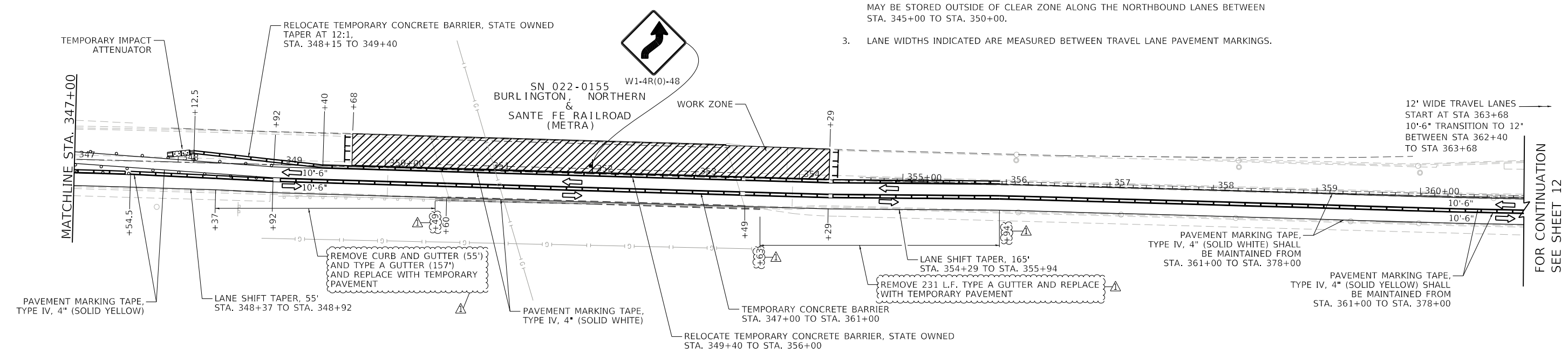
F.A.P. RTE.	SECTION	COUNTY	TOTAL SHEETS	SHEET NO.
344	2018-041-BDSBJR	DuPAGE	51	9
CONTRACT NO. 62H01				
ILLINOIS FED. AID PROJECT				



LEGEND

WORK ZONE	ARROW BOARD
RELOCATE TEMPORARY CONCRETE BARRIER	TYPE III BARRICADE
SIGN ON PERMANENT OR PORTABLE SUPPORT	TEMPORARY IMPACT ATTENUATOR (REDIRECTIVE, NARROW), TEST LEVEL 3
DIRECTION OF TRAFFIC	DRUM OR TYPE II BARRICADE AT 100' C-C SPACING IN TANGENT, 50' C-C SPACING TAPERS, AND 10' C-C SPACING IN CURVES/RADII
DIRECTION INDICATOR BARRICADE WITH STEADY BURN LIGHT @ 50' CENTERS	

- NOTES**
- TEMPORARY CONCRETE BARRIER TO BE USED AT WORK ZONE SHALL BE RELOCATED FROM EXISTING MEDIAN TEMPORARY CONCRETE BARRIER WALL. IT SHALL BE PAID FOR AS "RELOCATE TEMPORARY CONCRETE BARRIER, STATE OWNED."
 - RELOCATION OF TEMPORARY CONCRETE BARRIER, SPECIAL FOR STORAGE UNTIL NEEDED MAY BE STORED OUTSIDE OF CLEAR ZONE ALONG THE NORTHBOUND LANES BETWEEN STA. 345+00 TO STA. 350+00.
 - LANE WIDTHS INDICATED ARE MEASURED BETWEEN TRAVEL LANE PAVEMENT MARKINGS.



MODEL: ST00BELNAMES
FILE: 0220155_01220155_01220155_01220155.dgn

CHASTAIN & ASSOCIATES LLC
CONSULTING ENGINEERS
184-001397

USER NAME = _USER_	DESIGNED - JKP	REVISED - 2/25/2019
PLOT SCALE = 100,0000' / in.	DRAWN - DMW	REVISED -
PLOT DATE = 2/26/2019	CHECKED - SPF	REVISED -
	DATE - 11-02-2018	REVISED -

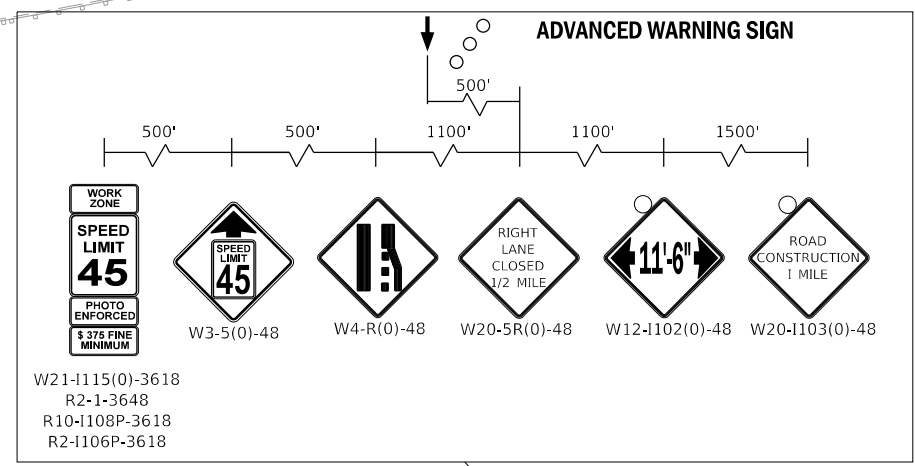
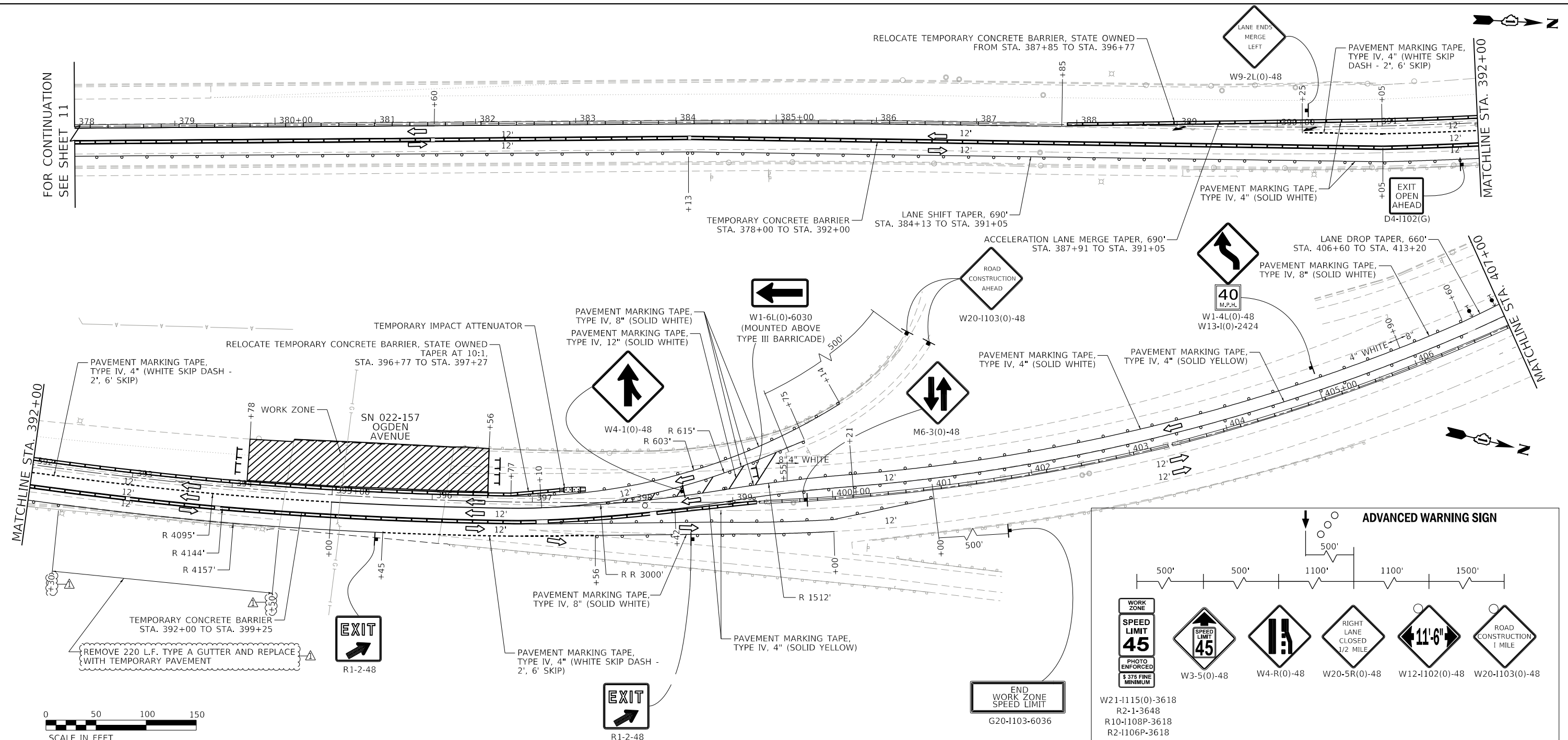
STATE OF ILLINOIS
DEPARTMENT OF TRANSPORTATION

IL 83 OVER US 34 & BNSF - BRIDGE DECK OVERLAY AND JOINT REPAIR
MAINTENANCE OF TRAFFIC - STAGE I

SCALE: 1"=50' SHEET 3 OF 6 SHEETS STA. 333+00 TO STA. 361+00

F.A.P. RTE.	SECTION	COUNTY	TOTAL SHEETS	SHEET NO.
344	2018-041-BD&BJR	DuPAGE	51	11
	SN 022-0155 & SN 022-0157		CONTRACT NO. 62H01	
		ILLINOIS	FED. AID PROJECT	

REV. 2/26/19

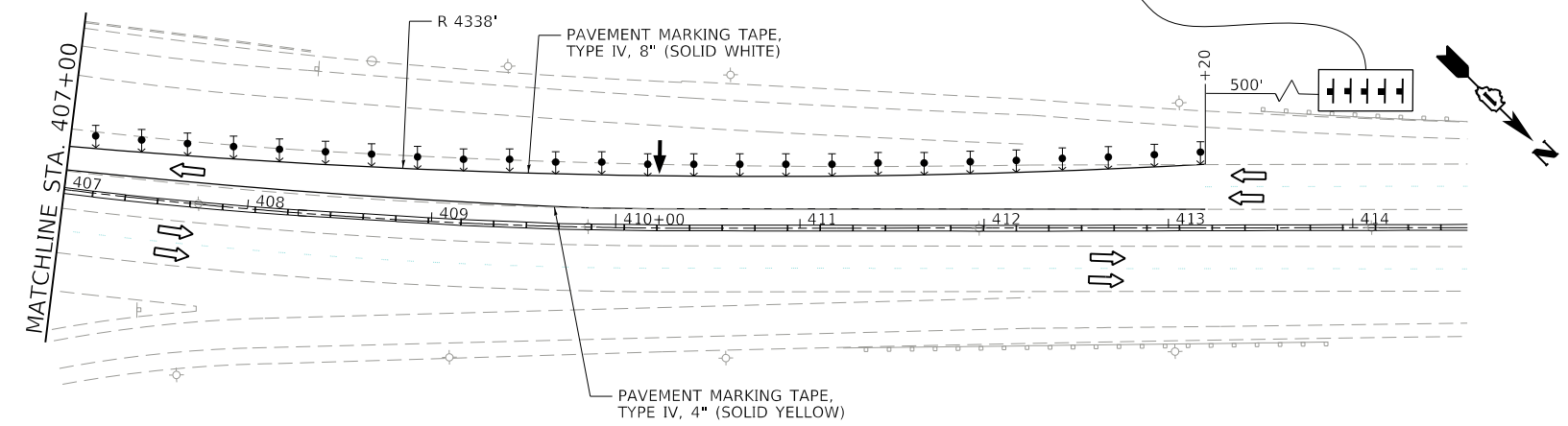


LEGEND

- WORK ZONE
- RELOCATE TEMPORARY CONCRETE BARRIER
- SIGN ON PERMANENT OR PORTABLE SUPPORT
- DIRECTION OF TRAFFIC
- DIRECTION INDICATOR BARRICADE WITH STEADY BURN LIGHT @ 50' CENTERS
- ARROW BOARD
- TYPE III BARRICADE
- TEMPORARY IMPACT ATTENUATOR (REDIRECTIVE, NARROW), TEST LEVEL 3
- DRUM OR TYPE II BARRICADE AT 100' C-C SPACING IN TANGENT, 50' C-C SPACING TAPERS, AND 10' C-C SPACING IN CURVES/RADII

NOTES

1. TEMPORARY CONCRETE BARRIER TO BE USED AT WORK ZONE SHALL BE RELOCATED FROM EXISTING MEDIAN TEMPORARY CONCRETE BARRIER WALL. IT SHALL BE PAID FOR AS "RELOCATE TEMPORARY CONCRETE BARRIER, STATE OWNED."
2. RELOCATION OF TEMPORARY CONCRETE BARRIER, SPECIAL FOR STORAGE UNTIL NEEDED MAY BE STORED OUTSIDE OF CLEAR ZONE ALONG THE NORTHBOUND LANES BETWEEN STA. 345+00 TO STA. 350+00.
3. LANE WIDTHS INDICATED ARE MEASURED BETWEEN TRAVEL LANE PAVEMENT MARKINGS.



MODEL: ST0081.MXD
 FILE: I:\projects\184\184-001397\184-001397.dwg
 DATE: 2/25/2019 10:25:23 AM

CHASTAIN & ASSOCIATES LLC
 CONSULTING ENGINEERS
 184-001397

USER NAME = _USER_	DESIGNED - JKP	REVISED - 2/25/2019
PLOT SCALE = 100.0000' / in.	DRAWN - DMW	REVISED -
PLOT DATE = 2/25/2019	CHECKED - SPF	REVISED -
	DATE - 11-02-2018	REVISED -

**STATE OF ILLINOIS
 DEPARTMENT OF TRANSPORTATION**

**IL 83 OVER US 34 & BNSF - BRIDGE DECK OVERLAY AND JOINT REPAIR
 MAINTENANCE OF TRAFFIC - STAGE I**

SCALE: 1"=50' SHEET 4 OF 6 SHEETS STA. 378+00 TO STA. 414+00

F.A.P. RTE.	SECTION	COUNTY	TOTAL SHEETS	SHEET NO.
344	2018-041-BDS&BR	DuPAGE	51	12
SN 022-0155 & SN 022-0157			CONTRACT NO. 62H01	
ILLINOIS			FED. AID PROJECT	