

035

STATE OF ILLINOIS  
DEPARTMENT OF TRANSPORTATION

F.A.U. RTE.	SECTION	COUNTY	TOTAL SHEETS	SHEET NO.
3512	2018-104-RS&SW	COOK	44	1

ILLINOIS CONTRACT NO. 62H43

\*44 + 6 = 50 TOTAL SHEETS

D-91-048-19

# PROPOSED HIGHWAY PLANS

FOR INDEX OF SHEETS, SEE SHEET NO. 2

IMPROVEMENT IS LOCATED IN THE CITIES OF  
DES PLAINES AND PARK RIDGE

F.A.U ROUTE 3512/1324: US 14 (NORTHWEST HWY)  
WESTERN AVENUE TO VERNON AVENUE  
SECTION: 2018-104-RS&SW  
PROJECT: STP-WFWY(610)  
RESURFACING (3P)/PEDESTRIAN RAMPS  
COOK COUNTY

**TRAFFIC DATA**

ADT (2017) = 50,200  
POSTED SPEED LIMIT = 30 MPH - 35 MPH

C-91-247-19

R 12 E

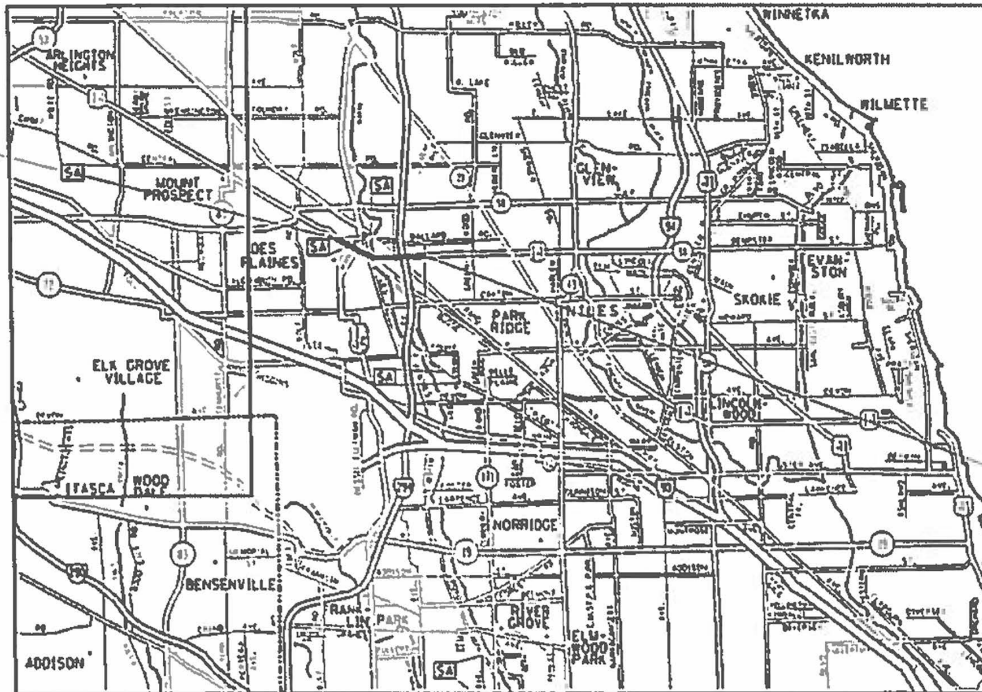
IMPROVEMENT BEGINS  
STA. 293 + 00

OMISSION  
STA. 325 + 53 TO STA. 339 + 15



FULL SIZE PLANS HAVE BEEN PREPARED USING STANDARD  
ENGINEERING SCALES. REDUCED SIZED PLANS WILL NOT  
CONFORM TO STANDARD SCALES. IN MAKING MEASUREMENTS  
ON REDUCED PLANS, THE ABOVE SCALES MAY BE USED.

J.U.L.I.E.  
JOINT UTILITY LOCATION INFORMATION FOR EXCAVATION  
1-800-892-0123  
OR 811



MAINE TOWNSHIP

GROSS LENGTH OF IMPROVEMENT = 12,550 FT. = 2.38 MILES  
NET LENGTH OF IMPROVEMENT = 11,188 FT. = 2.12 MILES

IMPROVEMENT ENDS  
STA. 418 + 50



LOCATION OF SECTION INDICATED THIS: -

STATE OF ILLINOIS  
DEPARTMENT OF TRANSPORTATION

SUBMITTED: December 10, 2018

Anthony J. Chingley, Regional Engineer

Feb 19 2019, E.A. Elk, Engineer of Design and Environment

Feb 20 2019, David P. Chaf, Director of Highways Project Implementation

PROJECT ENGINEER J. ALAIN MIDY (847)221-3056  
PROJECT MANAGER FAWAD AQUEEL (847)705-4247

CONTRACT NO. 62H43

REV. 2-21-2019

PRINTED BY THE AUTHORITY  
OF THE STATE OF ILLINOIS



SUMMARY OF QUANTITIES			URBAN		CONSTRUCTION TYPE CODE				
CODE NO	ITEM	UNIT	TOTAL QUANTITIES	ROADWAY 0005 80% FED 20% STATE					
20200100	EARTH EXCAVATION	CU YD	70	70					
21101615	TOPSOIL FURNISH AND PLACE, 4"	SO YD	427	427					
25000400	NITROGEN FERTILIZER NUTRIENT	POUND	5	5					
25000600	POTASSIUM FERTILIZER NUTRIENT	POUND	5	5					
25200110	SODDING, SALT TOLERANT	SO YD	368	368					
25200200	SUPPLEMENTAL WATERING	UNIT	7	7					
40600290	BITUMINOUS MATERIALS (TACK COAT)	POUND	53331	53331					
40600400	MIXTURE FOR CRACKS, JOINTS, AND FLANGEWAYS	TON	119	119					
40600827	POLYMERIZED LEVELING BINDER (MACHINE METHOD), IL-4.75, N50	TON	3215	3215					
40600982	HOT-MIX ASPHALT SURFACE REMOVAL - BUTT JOINT	SO YD	700	700					
42001300	PROTECTIVE COAT	SO YD	836	836					
42400200	PORTLAND CEMENT CONCRETE SIDEWALK 5 INCH	SO FT	5854	5854					
42400800	DETECTABLE WARNINGS	SO FT	677	677					

SUMMARY OF QUANTITIES			URBAN		CONSTRUCTION TYPE CODE				
CODE NO	ITEM	UNIT	TOTAL QUANTITIES	ROADWAY 0005 80% FED 20% STATE					
44000159	HOT-MIX ASPHALT SURFACE REMOVAL, 2 1/2"	SO YD	77855	77855					
44000600	SIDEWALK REMOVAL	SO FT	5613	5613					
44003510	MEDIAN REMOVAL PARTIAL DEPTH	SO FT	5600	5600					
44201827	CLASS D PATCHES, TYPE II, 15 INCH	SO YD	1500	1500					
44201831	CLASS D PATCHES, TYPE III, 15 INCH	SO YD	300	300					
44201833	CLASS D PATCHES, TYPE IV, 15 INCH	SO YD	550	550					
60250200	CATCH BASINS TO BE ADJUSTED	EACH	3	3					
60252800	CATCH BASINS TO BE RECONSTRUCTED	EACH	1	1					
60255500	MANHOLES TO BE ADJUSTED	EACH	4	4					
60260100	INLETS TO BE ADJUSTED	EACH	1	1					
60261530	INLETS TO BE ADJUSTED WITH NEW TYPE 23 FRAME AND GRATE	EACH	1	1					
60300105	FRAMES AND GRATES TO BE ADJUSTED	EACH	32	32					
60300305	FRAMES AND LIDS TO BE ADJUSTED	EACH	5	5					
60406000	FRAMES AND LIDS, TYPE 1, OPEN LID	EACH	17	17					
60406100	FRAMES AND LIDS, TYPE 1, CLOSED LID	EACH	5	5					

FILE NAME :	USER NAME : gulfraume p	DESIGNED -	REVISED -
dw:\NLD\REBID\INTEG\11\mtd\p\W\DOT\Documents\UDOT\Offices\District 1\Projects\DC4819\CADD\Design\DC4819\DRAWING.dgn		CHECKED -	REVISED -
		DATE -	REVISED -

**STATE OF ILLINOIS  
DEPARTMENT OF TRANSPORTATION**

<b>SUMMARY OF QUANTITIES</b>			
SCALE:	SHEET NO. OF SHEETS	STA.	TO STA.

F.A.P. RTE.	SECTION	COUNTY	TOTAL SHEETS	SHEET NO.
305	2018-098-RS&SW	COOK	44	3
FED. ROAD DIST. NO. 1 ILLINOIS FED. AID PROJECT			CONTRACT NO. 62H47	

REV. 2-21-2019

SUMMARY OF QUANTITIES			URBAN TOTAL QUANTITIES	CONSTRUCTION TYPE CODE				
CODE NO	ITEM	UNIT		ROADWAY 0005 80% FED 20% STATE				
60600605	CONCRETE CURB, TYPE B	FOOT	543	543				
* 66900200	NON-SPECIAL WASTE DISPOSAL	CU YD	86	86				
* 66900530	SOIL DISPOSAL ANALYSIS	EACH	5	5				
* 66901001	REGULATED SUBSTANCES PRE-CONSTRUCTION PLAN	LSUM	1	1				
* 66901002	ON-SITE MONITORING OF REGULATED SUBSTANCES	CAL DA	12	12				
* 66901003	REGULATED SUBSTANCES FINAL CONSTRUCTION REPORT	LSUM	1	1				
67000400	ENGINEER'S FIELD OFFICE, TYPE A	CAL MO	12	12				
67100100	MOBILIZATION	L SUM	1	1				
70100420	TRAFFIC CONTROL AND PROTECTION, STANDARD 701411	EACH	10	10				
70102625	TRAFFIC CONTROL AND PROTECTION, STANDARD 701606	L SUM	1	1				
70102630	TRAFFIC CONTROL AND PROTECTION, STANDARD 701601	L SUM	1	1				
70102632	TRAFFIC CONTROL AND PROTECTION, STANDARD 701602	L SUM	1	1				
70102635	TRAFFIC CONTROL AND PROTECTION, STANDARD 701701	L SUM	1	1				
70102640	TRAFFIC CONTROL AND PROTECTION, STANDARD 701801	L SUM	1	1				

SUMMARY OF QUANTITIES			URBAN TOTAL QUANTITIES	CONSTRUCTION TYPE CODE				
CODE NO	ITEM	UNIT		ROADWAY 0005 80% FED 20% STATE				
70300100	SHORT TERM PAVEMENT MARKING	FOOT	43140	43140				
70300150	SHORT TERM PAVEMENT MARKING REMOVAL	SO FT	14380	14380				
70300210	TEMPORARY PAVEMENT MARKING LETTERS AND SYMBOLS	SO FT	926.2	926.2				
70300220	TEMPORARY PAVEMENT MARKING - LINE 4"	FOOT	33500	33500				
70300240	TEMPORARY PAVEMENT MARKING - LINE 6"	FOOT	5600	5600				
70300250	TEMPORARY PAVEMENT MARKING - LINE 8"	FOOT	1160	1160				
70300260	TEMPORARY PAVEMENT MARKING - LINE 12"	FOOT	2700	2700				
70300280	TEMPORARY PAVEMENT MARKING - LINE 24"	FOOT	1300	1300				
70300520	PAVEMENT MARKING TAPE, TYPE III 4"	FOOT	14380	14380				
* 78000100	THERMOPLASTIC PAVEMENT MARKING - LETTERS AND SYMBOLS	SO FT	926.2	926.2				
* 78000200	THERMOPLASTIC PAVEMENT MARKING - LINE 4"	FOOT	33500	33500				
* 78000400	THERMOPLASTIC PAVEMENT MARKING - LINE 6"	FOOT	5600	5600				
* 78000500	THERMOPLASTIC PAVEMENT MARKING - LINE 8"	FOOT	1160	1160				

\* SPECIALTY ITEM

REV. 2-21-2019  
REV. - MS

FILE NAME :	USER NAME : gulfinau@p	DESIGNED -	REVISED -
D:\ANLDB\EBID\INTEG\Illinois.gov\FW\DOT\Documents\DOT\Offices\District 1\Projects\DC1819\CADD\Design\DC1819\DRAWING.dgn		CHECKED -	REVISED -
		DATE -	REVISED -

**STATE OF ILLINOIS  
DEPARTMENT OF TRANSPORTATION**

<b>SUMMARY OF QUANTITIES</b>			
SCALE:	SHEET NO.	OF SHEETS	STA. TO STA.

F.A.P. RTE.	SECTION	COUNTY	TOTAL SHEETS	SHEET NO.
305	2018-098-RS&SW	COOK	44	4
FED. ROAD DIST. NO. 1   ILLINOIS   FED. AID PROJECT			CONTRACT NO. 62H47	

SUMMARY OF QUANTITIES			URBAN TOTAL QUANTITIES	CONSTRUCTION TYPE CODE				
CODE NO	ITEM	UNIT		ROADWAY 0005 80% FED 20% STATE				
* 78000600	THERMOPLASTIC PAVEMENT MARKING - LINE 12"	FOOT	2700	2700				
* 78000650	THERMOPLASTIC PAVEMENT MARKING - LINE 24"	FOOT	1300	1300				
* 78100100	RAISED REFLECTIVE PAVEMENT MARKER	EACH	520	520				
78300200	RAISED REFLECTIVE PAVEMENT MARKER REMOVAL	EACH	380	380				
* 88600600	DETECTOR LOOP REPLACEMENT	FOOT	1200	1200				
X4060004	POLYMERIZED HOT-MIX ASPHALT SURFACE COURSE, STONE MATRIX ASPHALT, 9.5, N80	TON	7630	7630				
△ X5537800	STORM SEWERS TO BE CLEANED 12"	FOOT	250	250				
X6030310	FRAMES AND LIDS TO BE ADJUSTED (SPECIAL)	EACH	45	45				
X7030005	TEMPORARY PAVEMENT MARKING REMOVAL	SO FT	24850	24850				
Z0004562	COMBINATION CONCRETE CURB AND GUTTER REMOVAL AND REPLACEMENT	FOOT	1604	1604				
X0320050	CONSTRUCTION LAYOUT (SPECIAL)	L SUM	1	1				
△ Z0018500	DRAINAGE STRUCTURES TO BE CLEANED	EACH	20	20				
Z0030850	TEMPORARY INFORMATION SIGNING	SO FT	205.6	205.6				

SUMMARY OF QUANTITIES			URBAN TOTAL QUANTITIES	CONSTRUCTION TYPE CODE				
CODE NO	ITEM	UNIT		ROADWAY 0005 80% FED 20% STATE				
Z0033700	LONGITUDINAL JOINT SEALANT	FOOT	24500	24500				
Z0048665	RAILROAD PROTECTIVE LIABILITY INSURANCE	L SUM	1	1				
* 85000200	MAINTAIN EXISTING TRAFFIC SIGNAL	EACH	2	2				
* 89502376	REBUILD EXISTING HANDHOLE	EACH	3	3				
X0326864	BRICK SIDEWALK REMOVAL	SQ FT	133	133				
X0327611	REMOVE AND REINSTALL BRICK PAVER	SQ FT	530	530				
* X2600012	REMOVE AND REPLACE SIGN PANEL AND POLE ASSEMBLY	EACH	1	1				

△ NON PARTICIPATING  
\* SPECIALTY ITEM

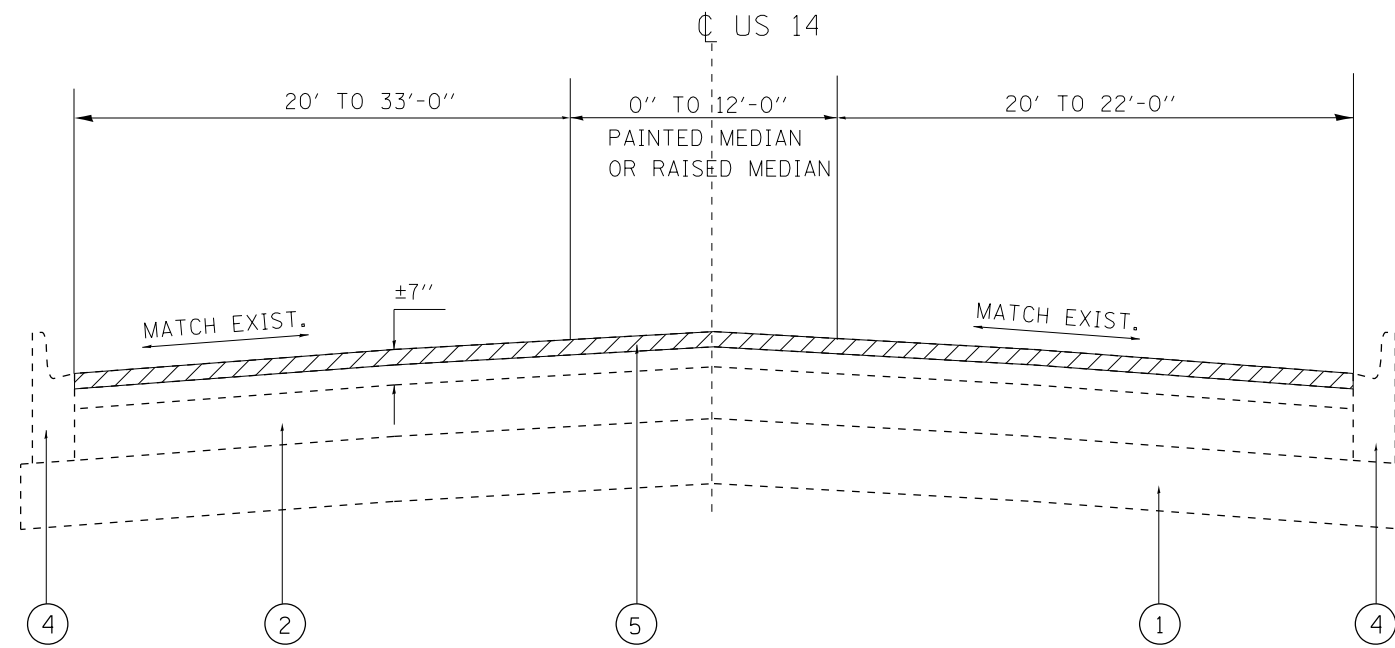
△ REV. 2-21-2019  
REV. - MS

FILE NAME :	USER NAME :	DESIGNED :	REVISED :
D:\AN\084EBID\INT EGI\1101.sgn\FW\DOT\Documents\VDCT\Offices\District 1\Projects\DC\4819\CADD\Design\DC\4819\DWG.dgn	guffinmep		
PLOT SCALE :	CHECKED :	REVISOR :	REVISOR :
1000000' / 1"			
PLOT DATE :	DATE :	REVISION :	REVISION :
12/17/2018			

STATE OF ILLINOIS  
DEPARTMENT OF TRANSPORTATION

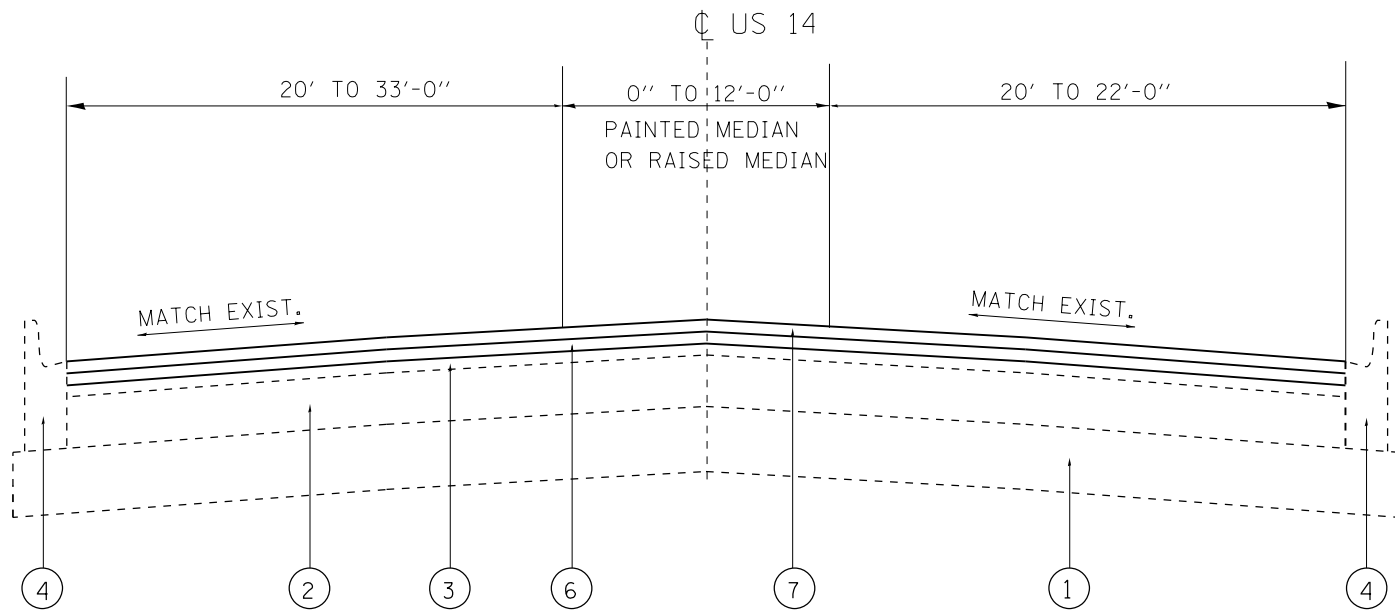
SUMMARY OF QUANTITIES  
SCALE: SHEET NO. OF SHEETS STA. TO STA.

F.A.P. RTE.	SECTION	COUNTY	TOTAL SHEETS	SHEET NO.
305	2018-098-R5&SW	COOK	44	5
FED. ROAD DIST. NO. 1 ILLINOIS FED. AID PROJECT			CONTRACT NO. 62H47	



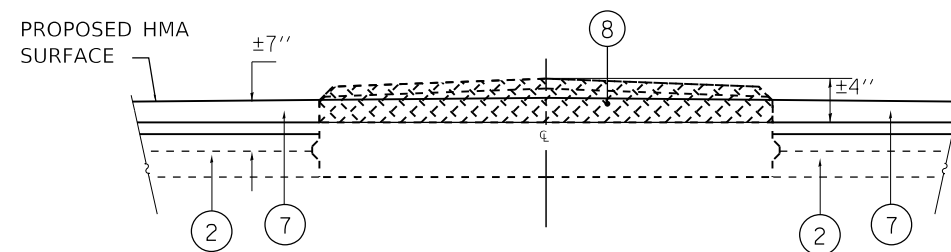
**EXISTING TYPICAL SECTION**

STA. 293+00 TO STA. 418+50



**PROPOSED TYPICAL SECTION**

STA. 293+00 TO STA. 418+50



**MEDIAN REMOVAL DETAILS**  
STA 382+50 TO STA. 390+40

**LEGEND**

- ① EXIST. STABILIZED SUBBASE 4"
- ② EXIST. P.C.C. PAVEMENT, ±10"
- ③ EXISTING HMA PAVEMENT AFTER MILLING, ±4 1/2 "
- ④ EXIST. CURB AND GUTTER, TYP. B-6.12
- ⑤ PROPOSED HOT-MIX ASPHALT SURFACE REMOVAL, 2 1/2"
- ⑥ PROPOSED POLYMERIZED LEVELING BINDER (MACHINE METHOD), IL-4.75, N50, 3/4"
- ⑦ PROPOSED POLYMERIZED HOT-MIX ASPHALT SURFACE COURSE, SMA, 9.5, N80, 1 3/4 "
- ⑧ PROPOSED MEDIAN REMOVAL PARTIAL DEPTH

HOT-MIX ASPHALT MIXTURE REQUIREMENTS	AIR VOIDS @ NODES	QUALITY MANAGEMENT PROGRAM (QMP)
<b>MIXTURE TYPE</b>		
<b>RESURFACING</b>		
POLYMERIZED HOT-MIX ASPHALT SURFACE COURSE, SMA, N80 (IL 9.5 mm)	3.5% @ 80 GYR	QCP
POLYMERIZED LEVELING BINDER (MACHINE METHOD), IL-4.75, N50	3.5% @ 50 GYR	QCP
<b>HMA PATCHING</b>		
CLASS D PATCH (HMA BINDER IL-19mm)	4% @ 70 GYR	QC/QA
QMP DESIGNATION: QUALITY CONTROL/QUALITY ASSURANCE (QC/QA); QUALITY CONTROL FOR PERFORMANCE (QCP); PAY FOR PERFORMANCE (PFP)		

THE UNIT WEIGHT USED TO CALCULATE ALL HOT-MIX ASPHALT SURFACE MIXTURE QUANTITIES IS 112 LBS/SY/IN.

THE "AC TYPE" FOR POLYMERIZED HMA MIXES SHALL BE "SBS/SBR PG 76-22" AND FOR NON-POLYMERIZED HMA THE "AC TYPE" SHALL BE "PF 64-22" UNLESS MODIFIED BY DISTRICT ONE SPECIAL PROVISIONS.

FOR USE OF RECYCLED MATERIALS SEE SPECIAL PROVISIONS

QUALITY MANAGEMENT PROGRAM (QMP) IDENTIFIES THE PARTICULAR QUALITY CONTROL SPECIFICATION THAT APPLIES TO THE HMA MIXTURE.

THE LONGITUDINAL JOINT SEALANT SHALL BE PLACED OVER THE POLYMERIZED LEVELING BINDER (MM) IL-4.75, N50 WHERE THE SURFACE MIX JOINT WILL BE LOCATED.

CONTRACTOR SHALL MILL FIRST BEFORE PATCHING

REV. 2-25-2019

FILE NAME =	USER NAME = miduja	DESIGNED -	REVISED - 2/25/2019
pw:\IL\084EBID\INTEG.illinois.gov\PI\DOT\Documents\DOT Offices\District 1\Projects\DI0489\Design\DI0489-shr-plan2.dgn		CHECKED -	REVISED -
Default	PLOT DATE = 2/25/2019	DATE -	REVISED -

**STATE OF ILLINOIS**  
**DEPARTMENT OF TRANSPORTATION**

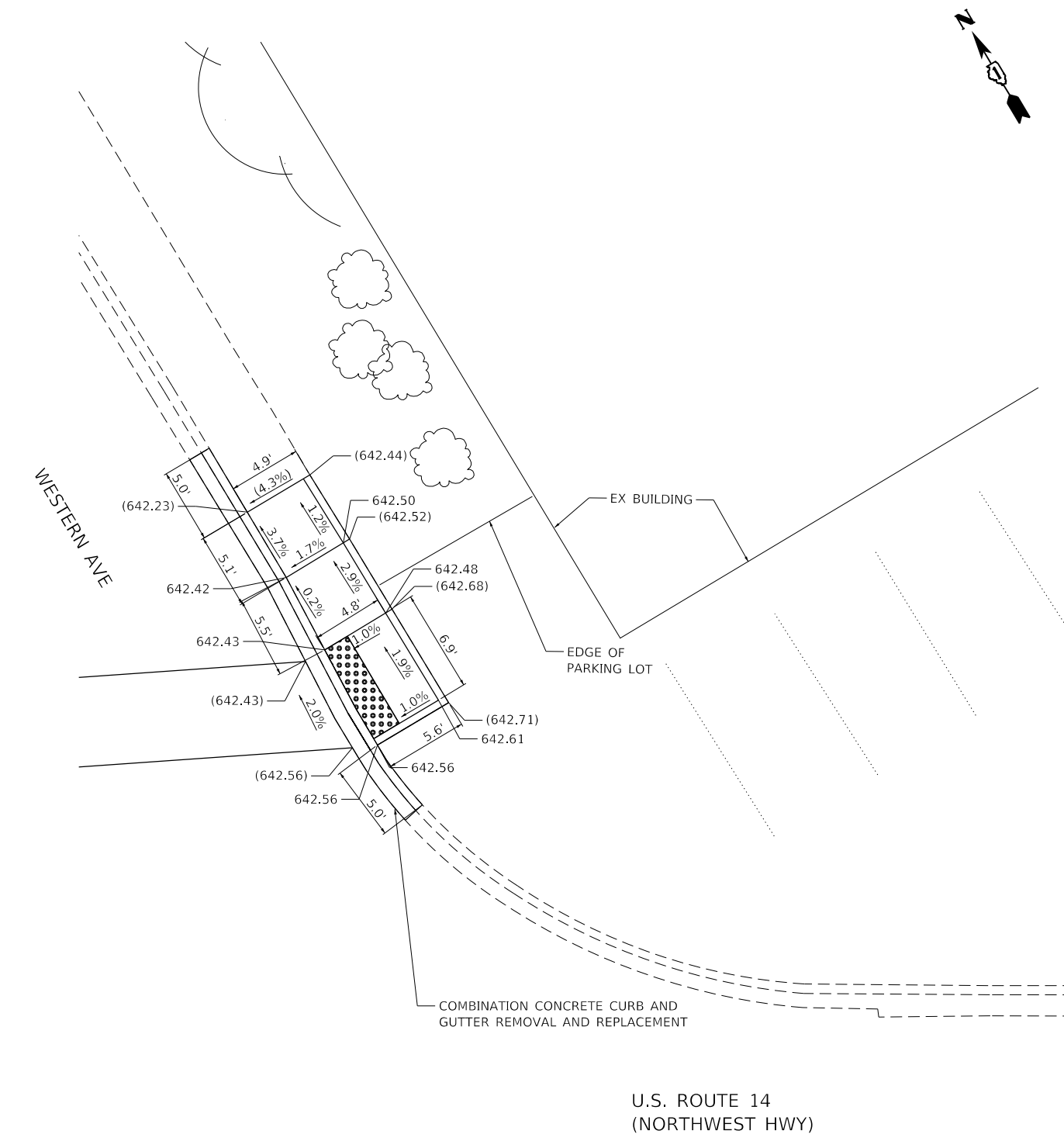
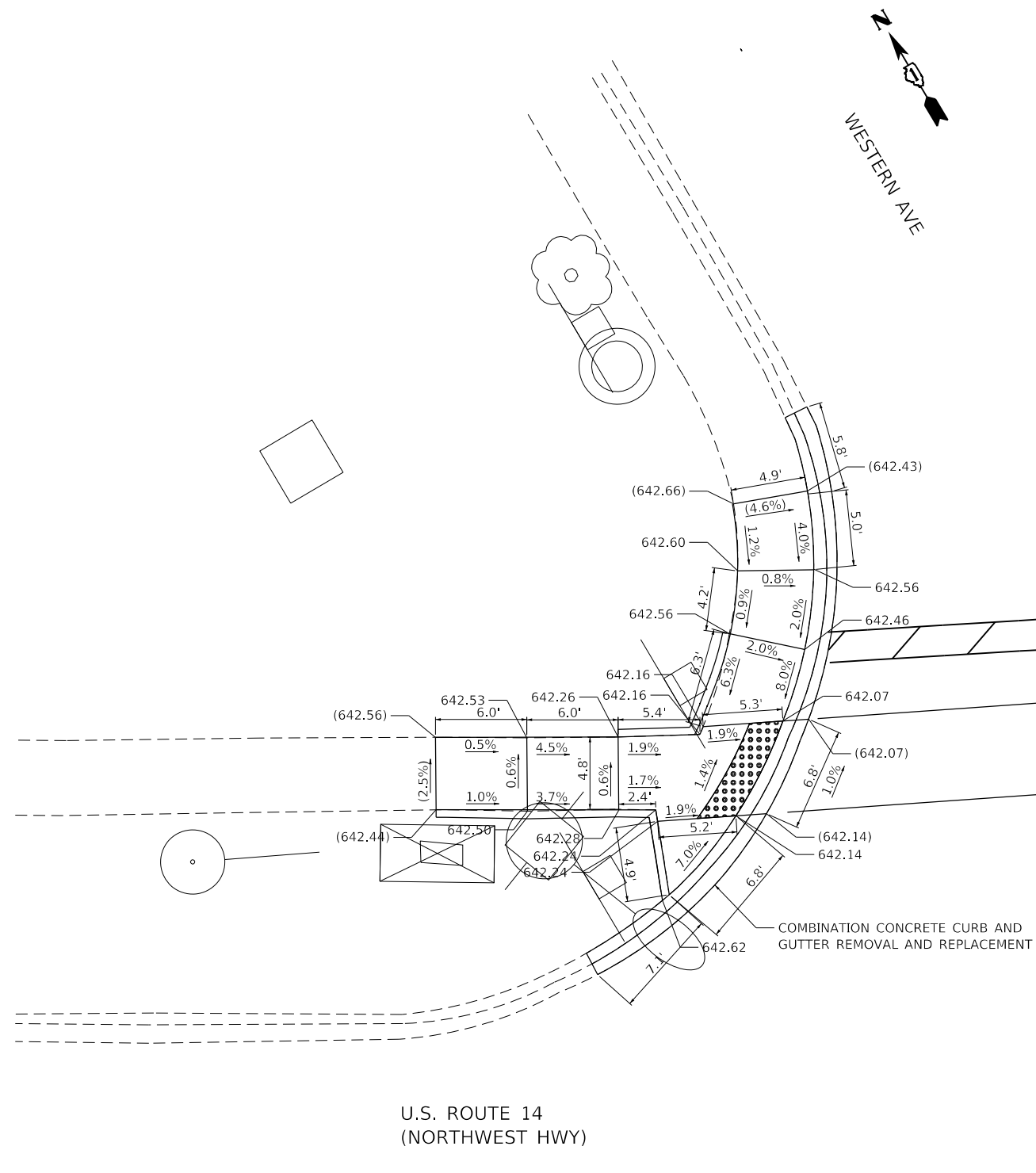
**TYPICAL SECTIONS**  
**US 14 (NORTHWEST HIGHWAY) WESTERN AVE. TO VERNON AVE.**

SCALE: SHEET OF SHEETS STA. TO STA.

F.A.U. RTE.	SECTION	COUNTY	TOTAL SHEETS	SHEET NO.
3512	2018-104-RS&SW	COOK	44	6
CONTRACT NO. 62H43				
ILLINOIS FED. AID PROJECT				



FILE NAME = Q:\Engineering\LiveProjects\13016 IDOT DURWork Order\16\CADD\CADD Sheets\Civil\0162H43-shr-ADA-US14 WESTERN AVE.dgn



BM #1196  
TOP SPINDAL OF FIRE HYDRANT AT SOUTHEAST CORNER OF US RTE 14 & WESTERN AVE.  
ELEV: 645.42  
N: 1959077.5233  
E: 1103523.9584

**LEGEND**

	PROPOSED SIDEWALK		DETECTABLE WARNINGS
	PROPOSED SIDE CURB		SIDEWALK REMOVAL REPLACE W/ TOPSOIL & SOD
	EXISTING ELEVATION/SLOPE		EXISTING BRICK SIDEWALK REMOVAL
	EXISTING BRICK SIDEWALK TO REMAIN		

BM #1196  
TOP SPINDAL OF FIRE HYDRANT AT SOUTHEAST CORNER OF US RTE 14 & WESTERN AVE.  
ELEV: 645.42  
N: 1959077.5233  
E: 1103523.9584

SHEET ADDED 2-21-2019



USER NAME = johnn	DESIGNED - AB	REVISED -  02/14/2019 AB
PLOT SCALE = 10.0000' / in.	DRAWN - AB	REVISED -
PLOT DATE = 2/18/2019	CHECKED - JMT	REVISED -
	DATE - 02/15/2019	REVISED -

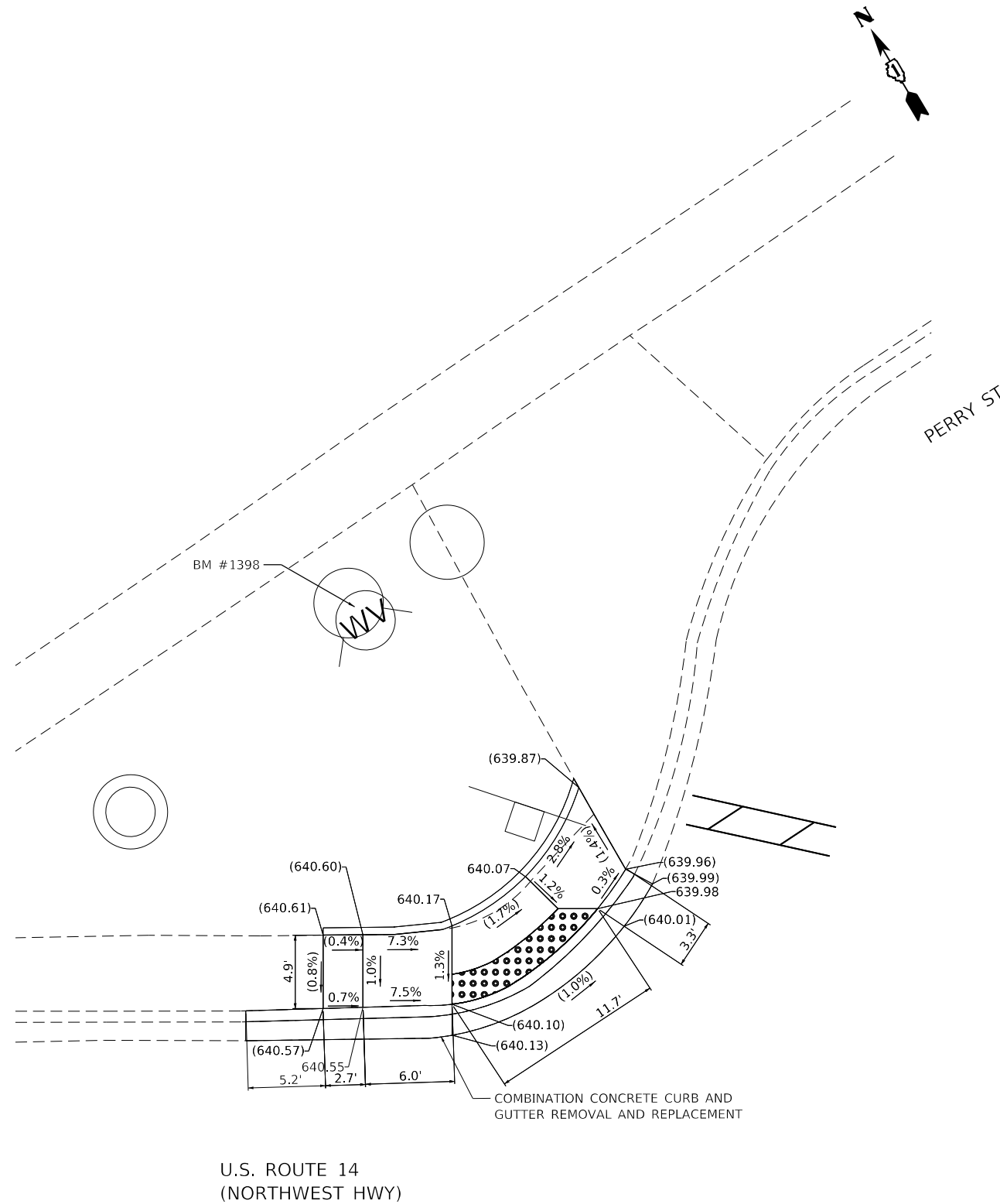
STATE OF ILLINOIS  
DEPARTMENT OF TRANSPORTATION

**SIDEWALK RAMP DETAILS - WESTERN AVE**  
**U.S. ROUTE 14 (NORTHWEST HWY) (WESTERN AVE TO VERNON AVE)**  
SCALE: 1" = 5' SHEET OF SHEETS STA. TO STA.

F.A.U. RTE.	SECTION	COUNTY	TOTAL SHEETS	SHEET NO.
3512	2018-104-RS&SW	COOK	44	33A
CONTRACT NO. 62H43				
ILLINOIS FED. AID PROJECT				

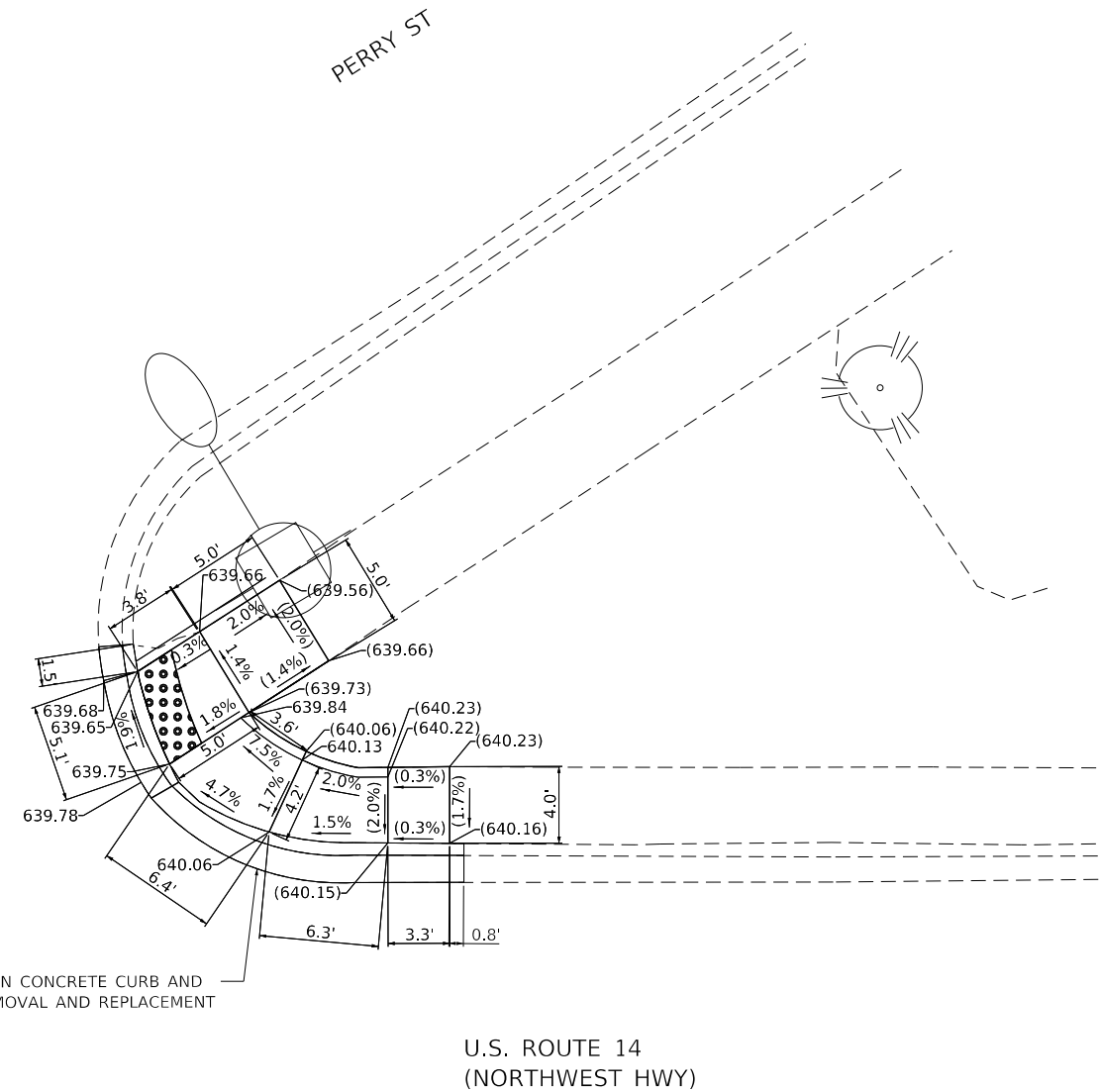


FILE NAME = Q:\Engineering\LiveProjects\13016 IDOT DURWork Order 16\CADD\CADD Sheets\Civil\0162H43-shr-ADA-US14 PERRY ST.dgn



U.S. ROUTE 14  
(NORTHWEST HWY)





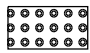

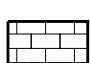
COMBINATION CONCRETE CURB AND  
GUTTER REMOVAL AND REPLACEMENT



U.S. ROUTE 14  
(NORTHWEST HWY)

COMBINATION CONCRETE CURB AND  
GUTTER REMOVAL AND REPLACEMENT

**LEGEND**

-  PROPOSED SIDEWALK
-  PROPOSED SIDE CURB
-  ( ) EXISTING ELEVATION/SLOPE
-  EXISTING BRICK SIDEWALK TO REMAIN
-  DETECTABLE WARNINGS
-  SIDEWALK REMOVAL REPLACE W/ TOPSOIL & SOD
-  EXISTING BRICK SIDEWALK REMOVAL

BM #1398  
TOP SPINDAL OF FIRE HYDRANT AT NORTHWEST CORNER OF US RTE 14 & PERRY ST.  
ELEV: 641.94  
N: 1958962.9352  
E: 1103861.4693

 SHEET ADDED 2-21-2019



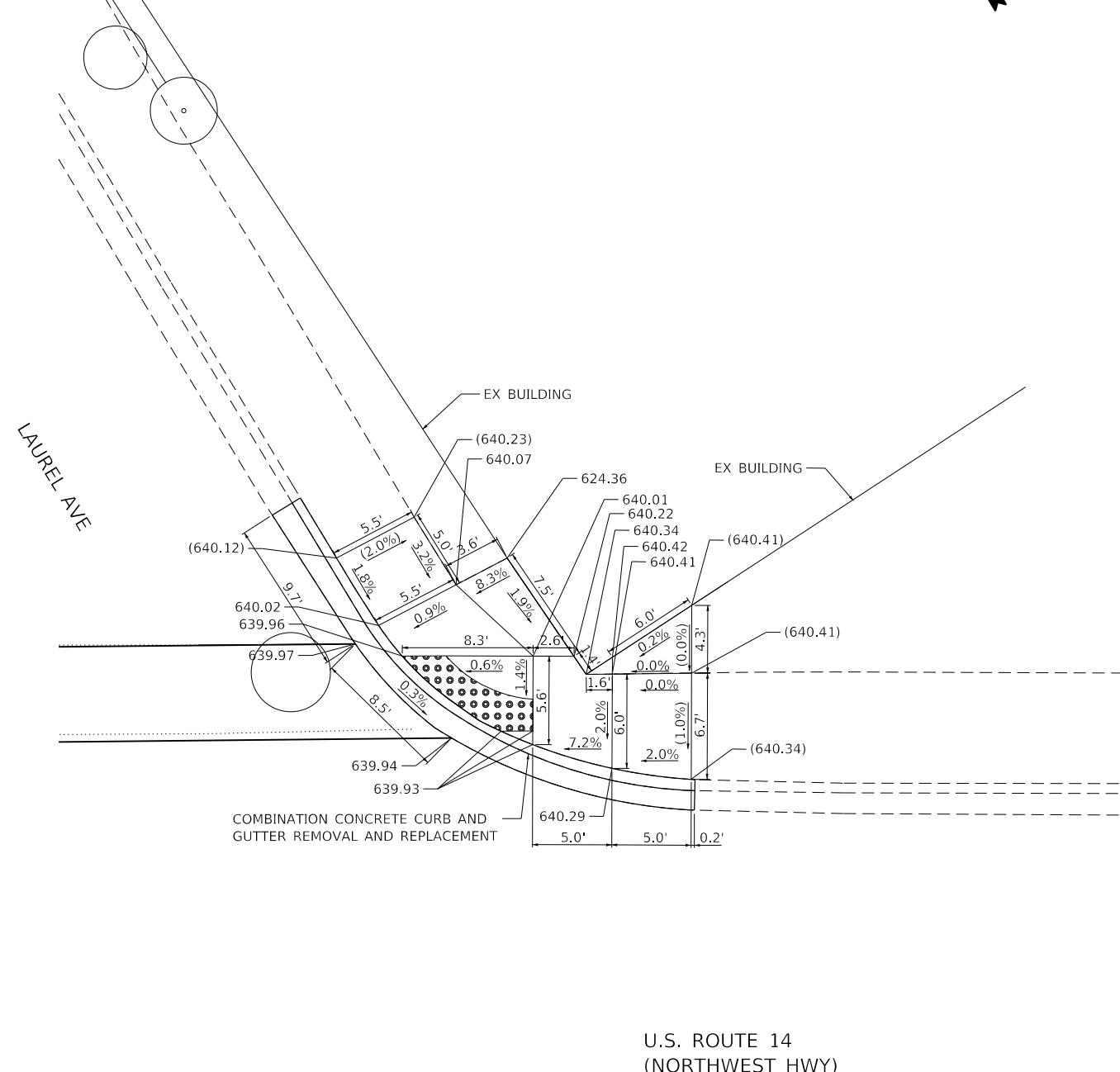
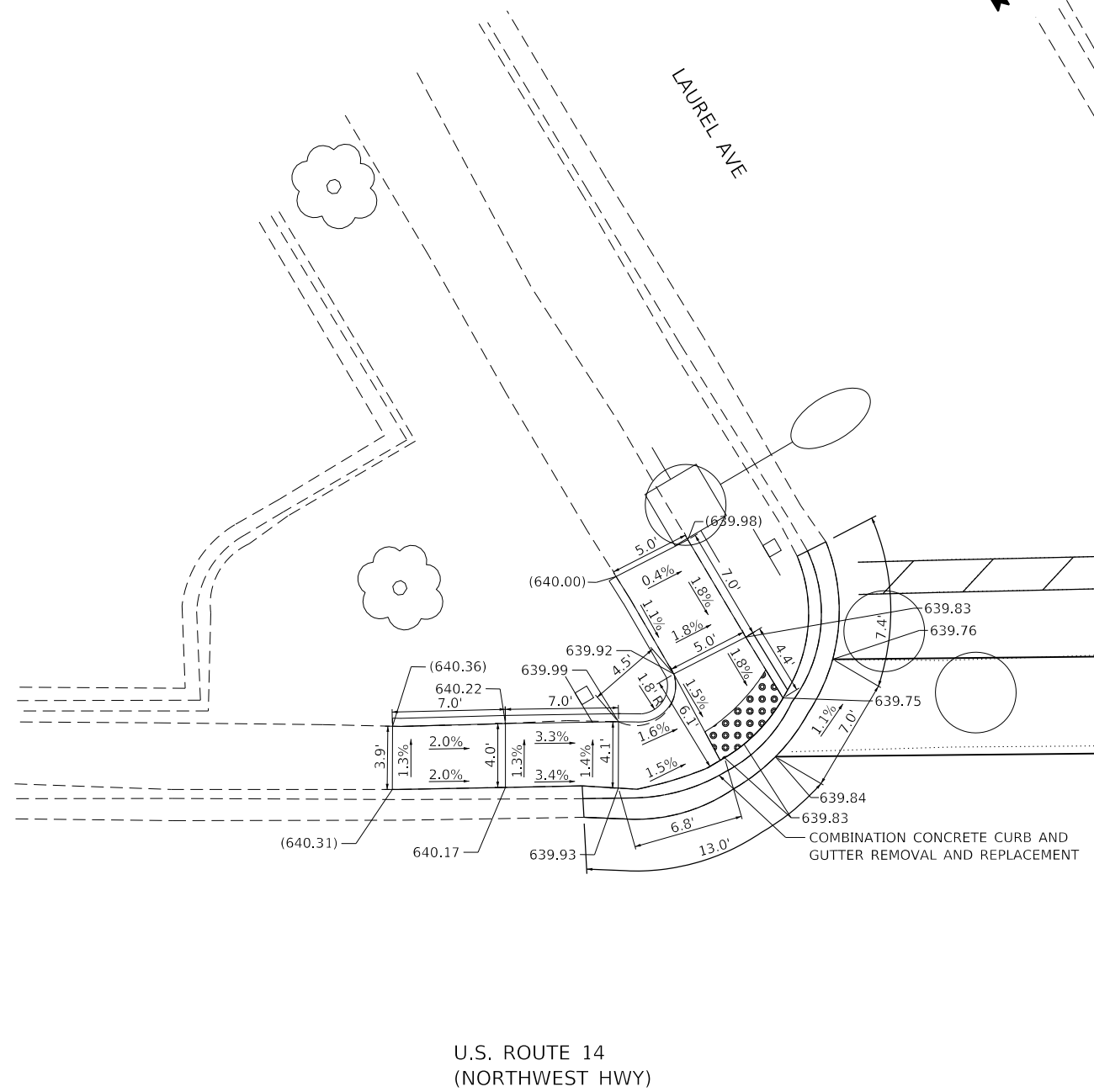
USER NAME = johnn	DESIGNED - LRC	REVISED - 02/14/2019 LRC
DRAWN - LRC	REVISOR -	
PLOT SCALE = 10.0000' / in.	CHECKED - JMT	REVISOR -
PLOT DATE = 2/18/2019	DATE - 02/15/2019	REVISOR -

STATE OF ILLINOIS  
DEPARTMENT OF TRANSPORTATION

**SIDEWALK RAMP DETAILS - PERRY ST**  
**U.S. ROUTE 14 (NORTHWEST HWY) (WESTERN AVE TO VERNON AVE)**  
SCALE: 1" = 5'    SHEET    OF    SHEETS    STA.    TO    STA.

F.A.U. RTE.	SECTION	COUNTY	TOTAL SHEETS	SHEET NO.
3512	2018-104-RS&SW	COOK	44	33B
CONTRACT NO. 62H43				
ILLINOIS FED. AID PROJECT				

FILE NAME = Q:\Engineering\LiveProjects\13016 IDOT DURNWork Order \16\CADD\CADD Sheets\Civil\0162H43-shr-ADA-US14 LAUREL AVE.dgn



BM #1614  
 CUT "X" ON SOUTHEAST BOLT ON FIRE HYDRANT AT SOUTH SIDE OF US RTE 14 & LAUREL AVE.  
 ELEV: 643.23  
 N: 1958672.2000  
 E: 1104206.7623

**LEGEND**

	PROPOSED SIDEWALK		DETECTABLE WARNINGS
	PROPOSED SIDE CURB		SIDEWALK REMOVAL REPLACE W/ TOPSOIL & SOD
	EXISTING ELEVATION/SLOPE		EXISTING BRICK SIDEWALK REMOVAL
	EXISTING BRICK SIDEWALK TO REMAIN		

BM #1614  
 CUT "X" ON SOUTHEAST BOLT ON FIRE HYDRANT AT SOUTH SIDE OF US RTE 14 & LAUREL AVE.  
 ELEV: 643.23  
 N: 1958672.2000  
 E: 1104206.7623

SHEET ADDED 2-21-2019



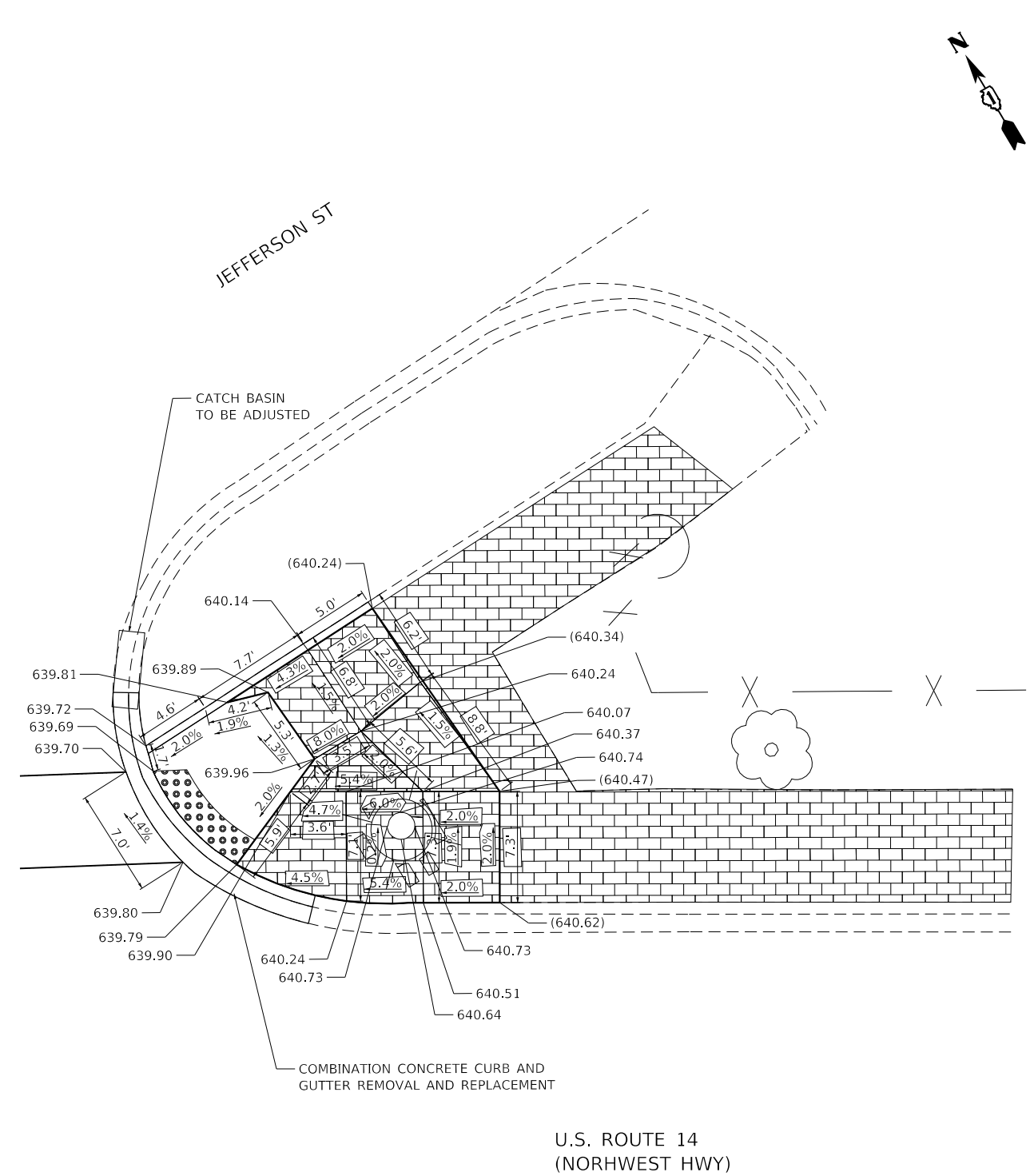
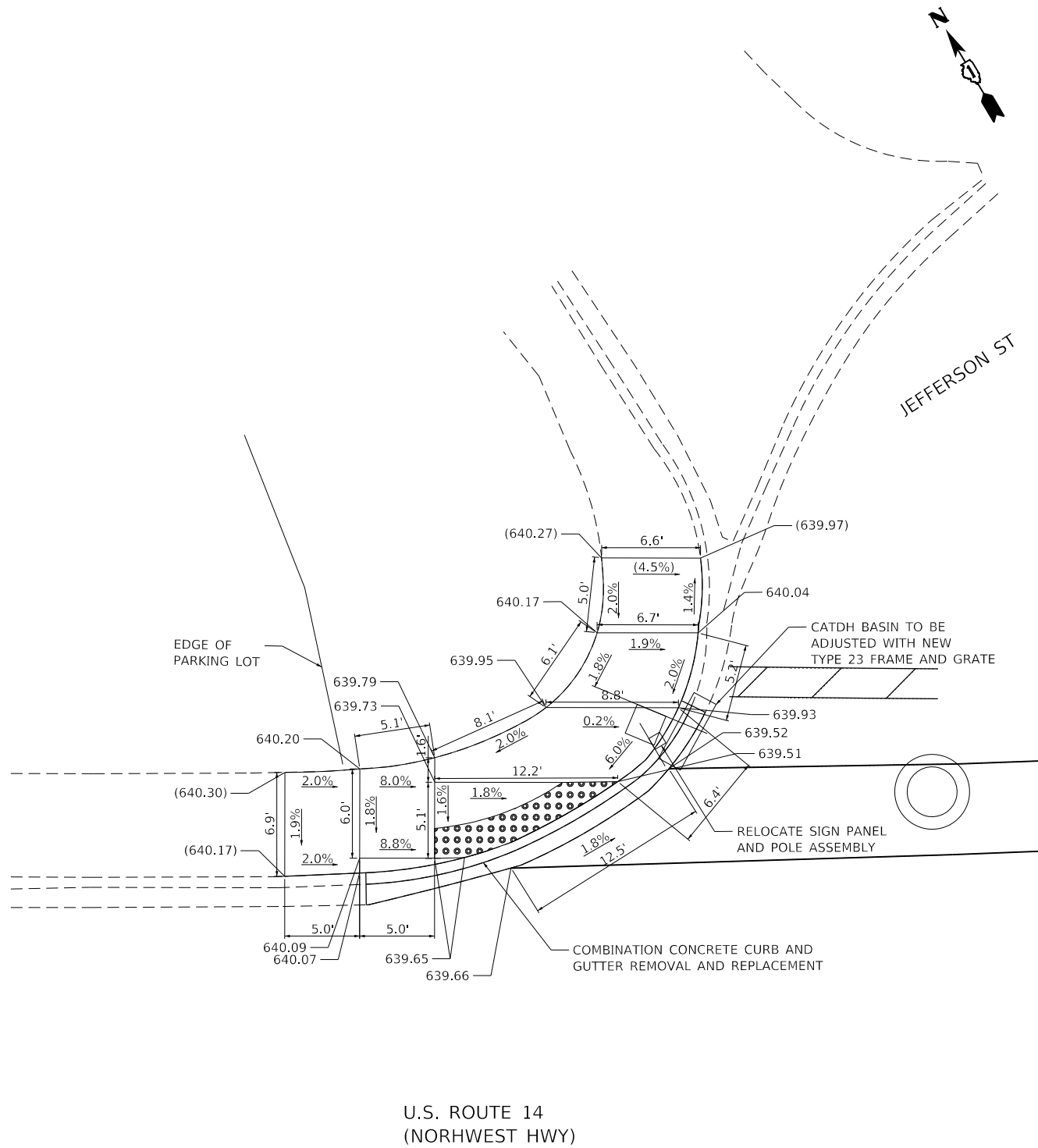
USER NAME = johnn	DESIGNED - IH	REVISED -  02/14/2019 IH
DRAWN - IH	REVISIONS -	
PLOT SCALE = 10.0000' / in.	CHECKED - JMT	REVISIONS -
PLOT DATE = 2/18/2019	DATE - 02/15/2019	REVISIONS -

**STATE OF ILLINOIS  
 DEPARTMENT OF TRANSPORTATION**

**SIDEWALK RAMP DETAILS - LAUREL AVE  
 U.S. ROUTE 14 (NORTHWEST HWY) (WESTERN AVE TO VERNON AVE)**  
 SCALE: 1" = 5' SHEET OF SHEETS STA. TO STA.

F.A.U. RTE.	SECTION	COUNTY	TOTAL SHEETS	SHEET NO.
3512	2018-104-RS&SW	COOK	44	33C
CONTRACT NO. 62H43				
ILLINOIS FED. AID PROJECT				

FILE NAME = Q:\Engineering\Live\Projects\13016 IDOT DUR\Work Order\16\CADD\CADD Sheets\Civil\0162H43-sht-ADA-US14 JEFFERSON ST.dgn



BM #1614  
CUT "X" ON SOUTHEAST BOLT ON FIRE HYDRANT AT SOUTH SIDE OF US RTE 14 & LAUREL AVE.  
ELEV: 643.23  
N: 1958672.2000  
E: 1104206.7623

**LEGEND**

	PROPOSED SIDEWALK		DETECTABLE WARNINGS
	PROPOSED SIDE CURB		SIDEWALK REMOVAL REPLACE W/ TOPSOIL & SOD
	EXISTING ELEVATION/SLOPE		EXISTING BRICK SIDEWALK TO REMAIN
	EXISTING BRICK SIDEWALK TO REMAIN		

BM #1614  
CUT "X" ON SOUTHEAST BOLT ON FIRE HYDRANT AT SOUTH SIDE OF US RTE 14 & LAUREL AVE.  
ELEV: 643.23  
N: 1958672.2000  
E: 1104206.7623

⚠ SHEET ADDED 2-21-2019



USER NAME = johnn	DESIGNED - IH	REVISED - 02/14/2019 IH
DRAWN - IH	REVISOR -	
PLOT SCALE = 10.0000' / in.	CHECKED - JMT	REVISOR -
PLOT DATE = 2/18/2019	DATE - 02/15/2019	REVISOR -

STATE OF ILLINOIS  
DEPARTMENT OF TRANSPORTATION

**SIDEWALK RAMP DETAILS - JEFFERSON ST**  
**U.S. ROUTE 14 (NORTHWEST HWY) (WESTERN AVE TO VERNON AVE)**

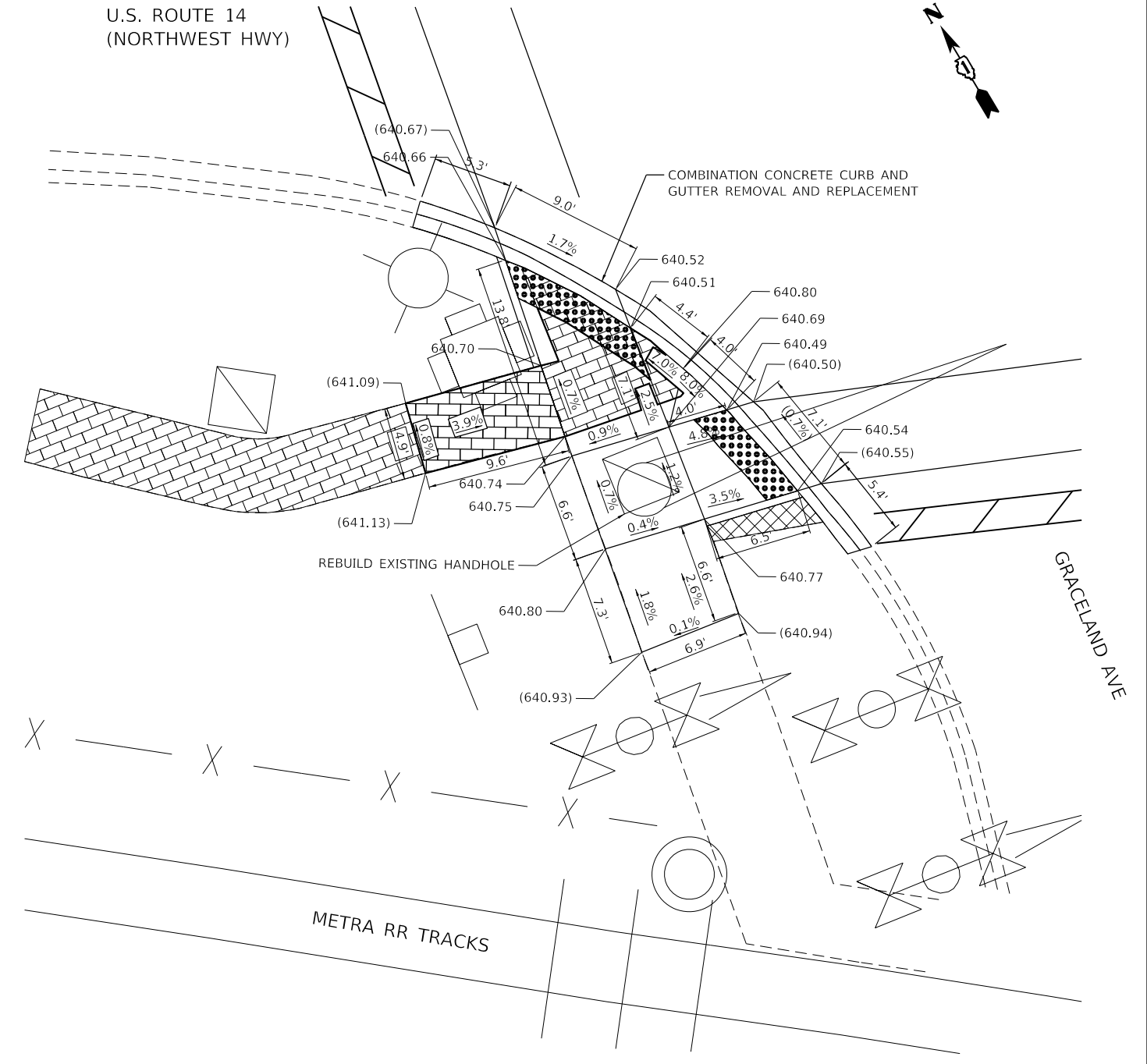
SCALE: 1" = 5'	SHEET OF SHEETS	STA. TO STA.
----------------	-----------------	--------------

F.A.U. RTE.	SECTION	COUNTY	TOTAL SHEETS	SHEET NO.
3512	2018-104-RS&SW	COOK	44	33D
CONTRACT NO. 62H43				
ILLINOIS FED. AID PROJECT				



U.S. ROUTE 14  
(NORTHWEST HWY)

**NORTHWEST CORNER**



U.S. ROUTE 14  
(NORTHWEST HWY)

**SOUTHWEST CORNER**

FILE NAME = Q:\Engineering\LiveProjects\13016 IDOT DURWork Order\16\CADD\CADD Sheets\Civil\0162H43-shr-ADA-US14 GRACELAND AVE.dgn

BM #2307  
CUT "SQUARE" ON SOUTHWEST CORNER OF TEMPORARY CONCRETE BARRIER AT NORTHEAST CORNER  
OF US RTE 14 & GRACELAND AVE.  
ELEV: 641.23  
N: 1958370.4361  
E: 1104911.1474

**LEGEND**

	PROPOSED SIDEWALK		DETECTABLE WARNINGS
	PROPOSED SIDE CURB		SIDEWALK REMOVAL REPLACE W/ TOPSOIL & SOD
	EXISTING ELEVATION/SLOPE		EXISTING BRICK SIDEWALK REMOVAL
	EXISTING BRICK SIDEWALK TO REMAIN		

BM #2307  
CUT "SQUARE" ON SOUTHWEST CORNER OF TEMPORARY CONCRETE BARRIER AT NORTHEAST CORNER  
OF US RTE 14 & GRACELAND AVE.  
ELEV: 641.23  
N: 1958370.4361  
E: 1104911.1474

SHEET ADDED 2-21-2019

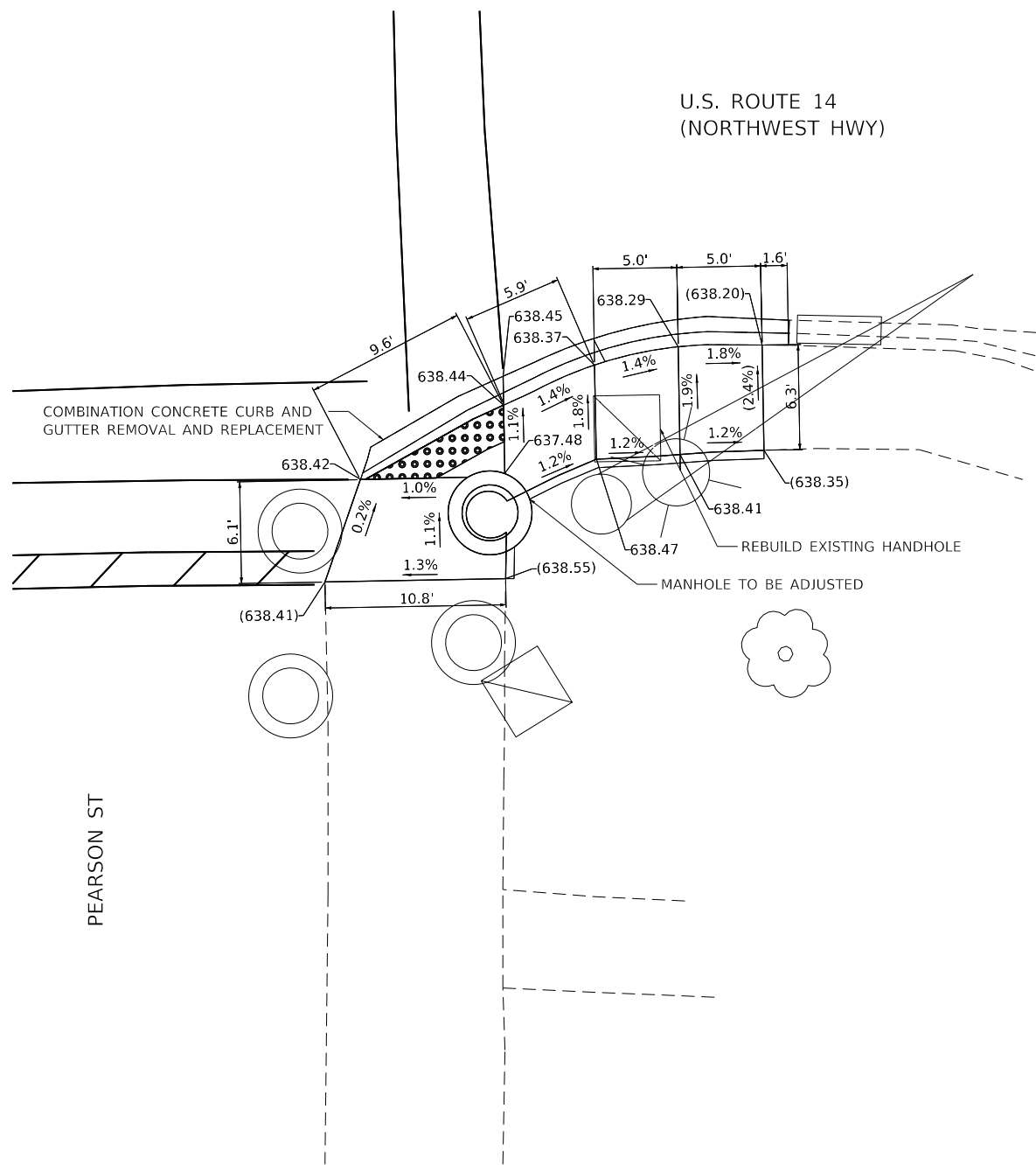


USER NAME = johnn	DESIGNED - AB	REVISED - 02/14/2019 AB
PLOT SCALE = 10.0000' / in.	DRAWN - AB	REVISED -
PLOT DATE = 2/18/2019	CHECKED - JMT	REVISED -
	DATE - 02/15/2019	REVISED -

STATE OF ILLINOIS  
DEPARTMENT OF TRANSPORTATION

**SIDEWALK RAMP DETAILS - GRACELAND AVE**  
**U.S. ROUTE 14 (NORTHWEST HWY) (WESTERN AVE TO VERNON AVE)**  
SCALE: 1" = 5' SHEET OF SHEETS STA. TO STA.

F.A.U. RTE.	SECTION	COUNTY	TOTAL SHEETS	SHEET NO.
3512	2018-104-RS&SW	COOK	44	33E
CONTRACT NO. 62H43				
ILLINOIS FED. AID PROJECT				



**NOTE:**  
PAVEMENT JOINTING TO MATCH EXISTING.

BM #2549  
TOP BOLT OF FIRE HYDRANT AT NORTHEAST CORNER OF US RTE 14 & PEARSON ST.  
  
ELEV: 641.16  
  
N: 1957765.7530  
E: 1105936.5835

LEGEND	
	PROPOSED SIDEWALK
	PROPOSED SIDE CURB
( )	EXISTING ELEVATION/SLOPE
	EXISTING BRICK SIDEWALK TO REMAIN
	DETECTABLE WARNINGS
	SIDEWALK REMOVAL REPLACE W/ TOPSOIL & SOD
	EXISTING BRICK SIDEWALK REMOVAL

SHEET ADDED 2-21-2019



USER NAME = johnn	DESIGNED - LRC	REVISED -  02/14/2019 LRC
PLOT SCALE = 10.0000' / in.	DRAWN - LRC	REVISED -
PLOT DATE = 2/18/2019	CHECKED - JMT	REVISED -
	DATE - 02/15/2019	REVISED -

**STATE OF ILLINOIS  
DEPARTMENT OF TRANSPORTATION**

**SIDEWALK RAMP DETAILS - PEARSON ST**  
**U.S. ROUTE 14 (NORTHWEST HWY) (WESTERN AVE TO VERNON AVE)**  
SCALE: 1" = 5' SHEET OF SHEETS STA. TO STA.

F.A.U. RTE.	SECTION	COUNTY	TOTAL SHEETS	SHEET NO.
3512	2018-104-RS&SW	COOK	44	33F
CONTRACT NO. 62H43				
ILLINOIS FED. AID PROJECT				

FILE NAME = Q:\Engineering\LiveProjects\13016 IDOT DURWork Order\16\CADD\CADD Sheets\Civil\0162H43-shr-ADA-US14 PEARSON ST.dgn