

GENERAL NOTES

1. ILLINOIS STATE LAW REQUIRES A 48-HOUR NOTICE BE GIVEN TO ALL UTILITIES BEFORE DIGGING. FIELD MARKING OF FACILITIES MAY BE OBTAINED BY CONTACTING J.U.L.I.E. OR FOR NON-MEMBERS, THE UTILITY COMPANY DIRECTLY. AGENCIES KNOWN TO HAVE FACILITIES WITHIN THE PROJECT AREA ARE AS FOLLOWS:

- CITY OF BELLEVILLE (LIGHTING)
- CITY OF BELLEVILLE (SANITARY SEWER)
- AMEREN ILLINOIS (GAS & ELECTRIC)
- AT&T ILLINOIS (COMMUNICATIONS)
- CHARTER COMMUNICATIONS, INC. (CTV)
- ILLINOIS AMERICAN WATER COMPANY (WATER)

MEMBERS OF J.U.L.I.E. CALL TOLL FREE (800) 892-0123 OR 811 AND ARE INDICATED BY *. NON-J.U.L.I.E. MEMBERS MUST BE NOTIFIED INDIVIDUALLY.

2. THE CONTRACTOR SHALL EXERCISE CARE IN EXCAVATING AROUND EXISTING UTILITIES TO REMAIN IN PLACE, SUCH AS WATER AND SEWER MAINS, AND SHALL BE RESPONSIBLE FOR REPAIR OF THESE AND MAINTENANCE OF SERVICE, IF DAMAGED BY THE CONTRACTOR'S ACTIVITIES, AS DEEMED SUCH BY THE ENGINEER.

3. THE CONTRACTOR SHALL VERIFY DIMENSIONS AND CONDITIONS IN THE FIELD PRIOR TO CONSTRUCTION AND ORDERING OF MATERIALS.

4. THE CONTRACTOR SHALL EXERCISE CARE IN PERFORMING REMOVALS SO AS NOT TO DISRUPT ADJOINING FEATURES THAT ARE TO REMAIN IN PLACE. ANY DAMAGE CAUSED TO ADJOINING FEATURES AS A RESULT OF THE CONTRACTOR'S OPERATIONS SHALL BE REPAIRED AT THE CONTRACTOR'S EXPENSE TO THE SATISFACTION OF THE ENGINEER.

5. ALL SAW CUTTING REQUIRED FOR REMOVALS SHALL BE INCLUDED IN THE CONTRACT UNIT PRICE PER UNIT OF REMOVAL QUANTITIES.

6. ALL AREAS DISTURBED FOR ANY REASON SHALL BE PERMANENTLY SEEDED AS DIRECTED BY THE ENGINEER AND INCLUDED IN THE COST OF THE CONTRACT.

7. THE CONTRACTOR SHALL BE RESPONSIBLE FOR ESTABLISHING POSITIVE DRAINAGE IN THE DISTURBED AREAS, TO THE SATISFACTION OF THE ENGINEER.

8. ALL LOOSE MATERIAL DEPOSITED IN THE FLOWLINE OF DRAINAGE STRUCTURES WHICH OBSTRUCT THE NATURAL FLOW OF WATER SHALL BE REMOVED AT THE CLOSE OF EACH WORKING DAY. PRIOR TO FINAL ACCEPTANCE OF THE IMPROVEMENT, ALL DRAINAGE STRUCTURES SHALL BE FREE OF DIRT AND DEBRIS. THIS WORK WILL NOT BE PAID FOR SEPARATELY, BUT SHALL BE INCLUDED IN THE BID PRICES OF THE CONTRACT.

9. NO OVERNIGHT LANE CLOSURES WILL BE PERMITTED.

10. SIDEROADS AND ENTRANCES SHALL BE OPEN TO TRAFFIC AT ALL TIMES.

11. ALL CONSTRUCTION SIGNS SHALL BE 48" X 48" FLUORESCENT ORANGE.

12. ALL TRAFFIC CONTROL DEVICES AS HEREIN SPECIFIED AND ANY ADDITIONAL TRAFFIC CONTROL DEVICES AS DEEMED NECESSARY BY THE RESIDENT ENGINEER SHALL BE INCLUDED IN THE CONTRACT TRAFFIC CONTROL AND PROTECTION PAY ITEMS.

13. THE DEPARTMENT STRONGLY ENCOURAGES THE PRIME CONTRACTOR AND THEIR APPROVED SUB-CONTRACTORS TO HIRE MINORITY, WOMEN AND DISADVANTAGED INDIVIDUALS FROM ITS FEDERALLY FUNDED HIGHWAY CONSTRUCTION CAREERS TRAINING PROGRAM (HCCTP) TO HELP MEET WORKFORCE AND TRAINEE GOALS. THIS PROGRAM IS TRAINING MINORITIES, WOMEN AND DISADVANTAGED INDIVIDUALS IN HIGHWAY CONSTRUCTION-RELATED SKILLS, E.G., MATH FOR THE TRADES, JOB READINESS, TECHNICAL SKILLS COURSEWORK (CARPENTRY, CONCRETE FLATWORK, BLUEPRINT READING, SITE PLANS, SITE WORK, TOOLS USE, ETC.) AND OSHA 10 HOUR CERTIFICATION, TO PREPARE THEM FOR A CAREER IN THE HIGHWAY CONSTRUCTION TRADES. GRADUATES ARE WELL-TRAINED AND READY TO BECOME PRODUCTIVE ENTRY-LEVEL CONSTRUCTION WORKERS. CONTACT THE DISTRICT 8 EEO OFFICE AT 618-346-3360 AND/OR THE HCCTP COORDINATOR AT 618-874-6528 TO LEARN MORE ABOUT THE PROGRAM AND FOR ASSISTANCE IN MEETING WORKFORCE AND TRAINEE GOALS.

LOCATION	DESCRIPTION	TRAFFIC DATA			
		ACTUAL (YEAR)	ESTIMATED (2016)	SU (%)	MU (%)
1	17TH STREET	25 (2016)	25	4.0	0.0
2	CANTEBURY DRIVE	100 (2016)	100	10.0	5.0
3	ROYAL HEIGHTS RD.	25 (2016)	25	4.0	0.0
4	N. 42ND STREET	25 (2016)	25	4.0	0.0
5	W. MAIN STREET	25 (2016)	25	4.0	0.0
6	47TH STREET	25 (2016)	25	4.0	0.0
7	FRANK SCOTT PKWY	16 (2016)	16	2.0	1.1

HIGHWAY STANDARDS

- 000001-07 STANDARD SYMBOLS, ABBREVIATIONS AND PATTERNS
- 001001-02 AREAS OF REINFORCEMENT BARS
- 001006 DECIMAL OF AN INCH AND OF A FOOT
- 424001-11 PERPENDICULAR CURB RAMPS FOR SIDEWALKS
- 424006-04 DIAGONAL CURB RAMPS FOR SIDEWALKS
- 424016-05 MID-BLOCK CURB RAMPS FOR SIDEWALKS
- 424021-05 DEPRESSED CORNER FOR SIDEWALKS
- 424031-02 MEDIAN PEDESTRIAN CROSSINGS
- 701101-05 OFF-RD OPERATIONS, MULTILANE, 15' (4.5 m) TO 24" (600 mm) FROM PAVEMENT EDGE
- 701701-10 URBAN LANE CLOSURE, MULTILANE INTERSECTION
- 701801-06 SIDEWALK, CORNER OR CROSSWALK CLOSURE
- 701901-08 TRAFFIC CONTROL DEVICES
- 814001-03 HANDHOLES, POLYMER CONCRETE, SINGLE
- 814006-02 HANDHOLES, CONCRETE AND POLYMER CONCRETE, DOUBLE
- 873001-02 TRAFFIC SIGNAL GROUNDING AND BONDING
- 876001-04 PEDESTRIAN PUSH BUTTON POST
- 878001-10 CONCRETE FOUNDATION DETAILS
- 886001-01 DETECTOR LOOP INSTALLATIONS
- 886006-01 TYPICAL LAYOUTS FOR DETECTION LOOPS

- 701311-03 LANE CLOSURE 2L, 2W MOVING OPERATIONS - DAY ONLY
- 701426-09 LANE CLOSURE, MULTILANE, INTERMITTENT OR MOVING OPER., FOR SPEEDS ≥ 45 MPH



COMMITMENTS

NONE

REVISED 02/20/19

FILE NAME =	USER NAME = jeffersons	DESIGNED -	REVISED - REVISED 02/20/19	STATE OF ILLINOIS DEPARTMENT OF TRANSPORTATION	GENERAL NOTES, COMMITMENTS, AND HIGHWAY STANDARDS	F.A.B. RTE.	SECTION	COUNTY	TOTAL SHEETS	SHEET NO.	
p:\11084EBIDINTEG\Illinois.gov\PIDOT\Documents\DOT Offices\District 8\Projects\D876\Drawings\640sheets\D876J81-ght-cover.dwg						9257	(28-1, 122-1, 122-2) SW-1	MADISON	21	2	
MODELNAME	PLOT SCALE = 100.4324 ' / in.	CHECKED -	REVISED -			SCALE: _____ SHEET _____ OF _____ SHEETS STA. _____ TO STA. _____		ILLINOIS FED. AID PROJECT			
	PLOT DATE = 10/17/2018	DATE -	REVISED -			CONTRACT NO. 76J81					

CODE NO.	ITEM	UNIT	TOTAL QUANTITY	CONSTR. CODE	
				SAFETY	URBAN
* 88600600	DETECTOR LOOP REPLACEMENT	FOOT	1084	1084	
* 88800100	PEDESTRIAN PUSH-BUTTON	EACH	38	38	
* 89500200	RELOCATE EXISTING PEDESTRIAN SIGNAL HEAD	EACH	2	2	
* 89500400	RELOCATE EXISTING PEDESTRIAN PUSH-BUTTON	EACH	4	4	
* 89502200	MODIFY EXISTING CONTROLLER	EACH	7	7	
* 89502300	REMOVE ELECTRIC CABLE FROM CONDUIT	FOOT	2472	2472	
* 89502350	REMOVE AND REINSTALL ELECTRIC CABLE FROM CONDUIT	FOOT	6209	6209	
* 89502375	REMOVE EXISTING TRAFFIC SIGNAL EQUIPMENT	EACH	54	54	
* 89502380	REMOVE EXISTING HANDHOLE	EACH	14	14	
X0327979	PAVEMENT MARKING REMOVAL - GRINDING	SQ FT	4430	4430	
X0327980	PAVEMENT MARKING REMOVAL - WATER BLASTING	SQ FT	4430	4430	
X4402020	CONCRETE MEDIAN SURFACE REMOVAL	SQ FT	346	346	
X7030005	TEMPORARY PAVEMENT MARKING REMOVAL	SQ FT	3619	3619	
* X8800101	PEDESTRIAN PUSH-BUTTON, SPECIAL	EACH	10	10	



* SPECIALTY ITEM

△ REVISED 2/20/19

REV. - MS

FILE NAME =	USER NAME = jeffersons	DESIGNED -	REVISED -	STATE OF ILLINOIS DEPARTMENT OF TRANSPORTATION	SUMMARY OF QUANTITIES	F.A.J. RTE.	SECTION	COUNTY	TOTAL SHEETS	SHEET NO.	
p:\1\1084EBIDINTEG\Illinois.gov\PIWIDOT\Documents\DOT Offices\District 8\Projects\0875\Brown\0875\0875-000.dwg	p:\1\1084EBIDINTEG\Illinois.gov\PIWIDOT\Documents\DOT Offices\District 8\Projects\0875\Brown\0875\0875-000.dwg	CHECKED -	REVISED -			9257	(28-1, 122-1, 122-2)SW-1	ST. CLAIR	25	4	
MODELNAME	PLOT DATE = 10/15/2018	DATE -	REVISED -			SCALE: _____ SHEET _____ OF _____ SHEETS STA. _____ TO STA. _____			CONTRACT NO. 76J81		
						ILLINOIS FED. AID PROJECT					

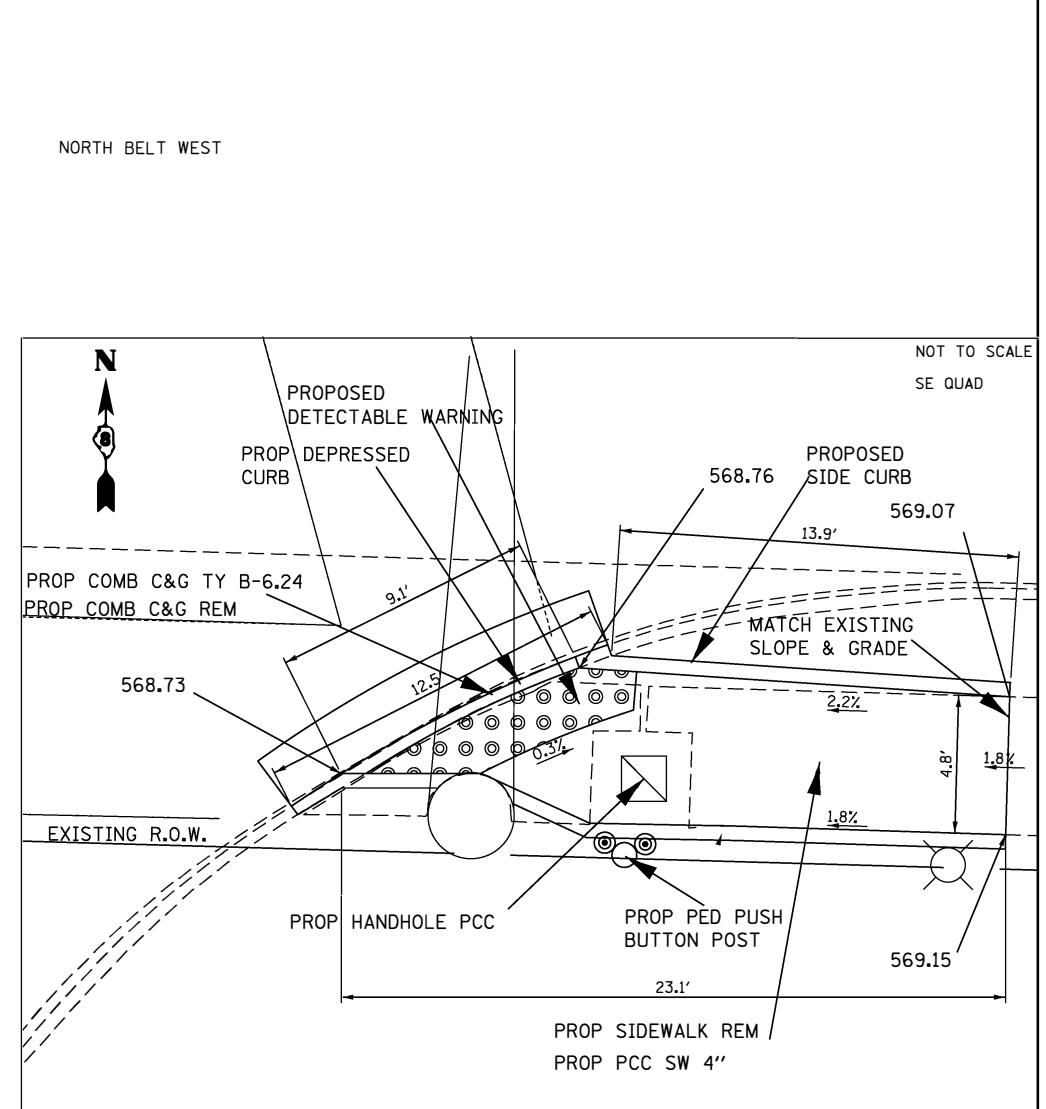
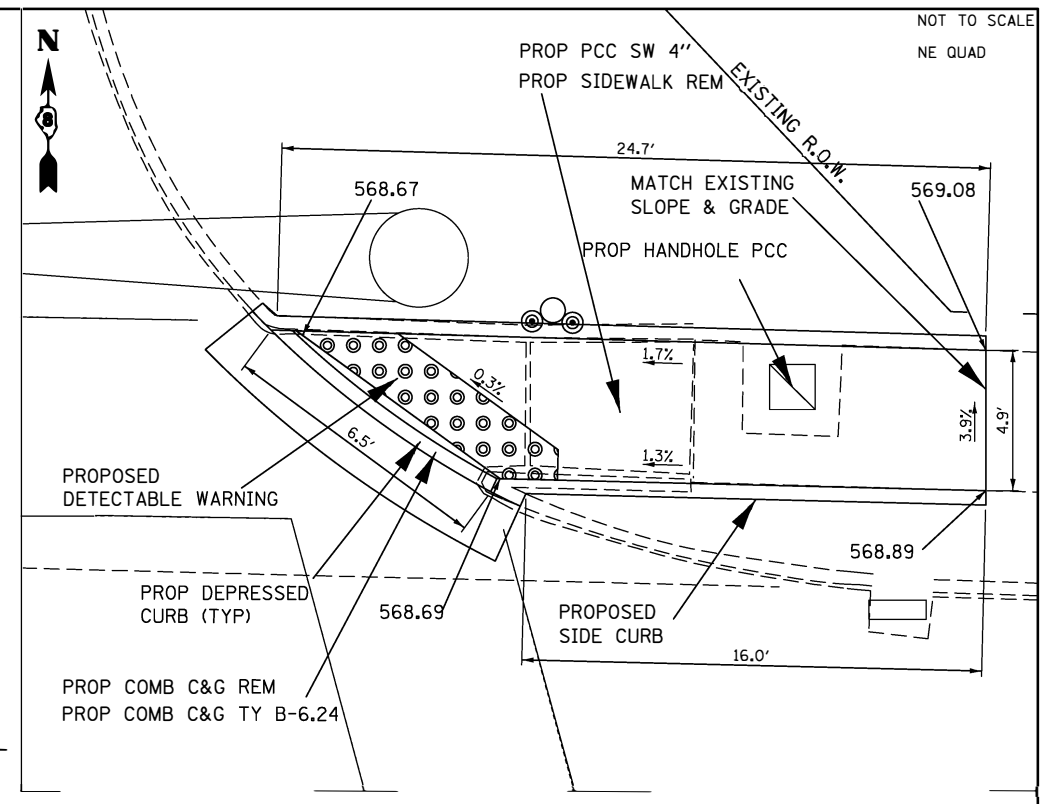
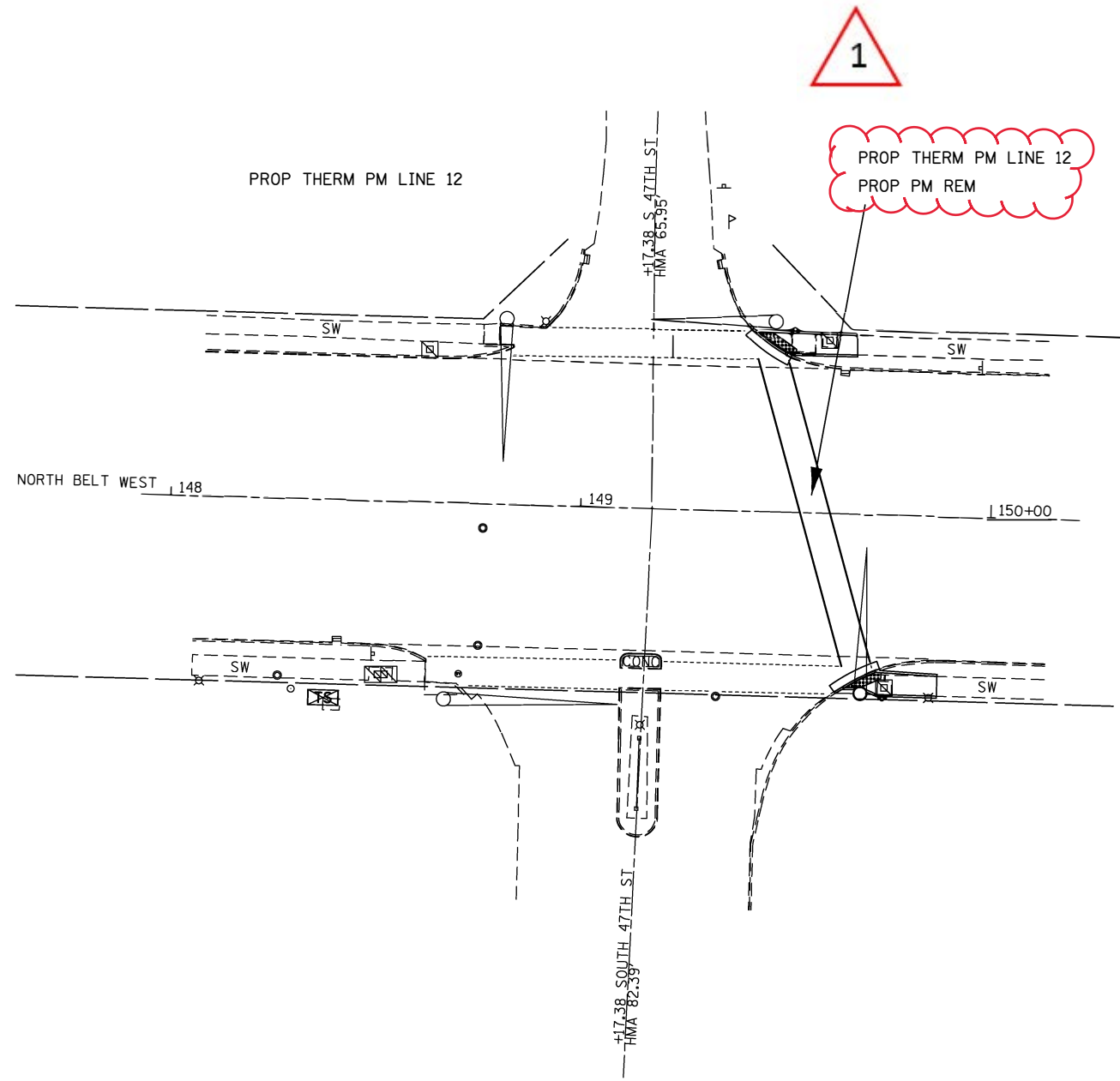
		FRANK SCOTT PARKWAY				47TH STREET		MAIN STREET				ISLANDS		42ND STREET					SUB TOTALS
		LOC #1	LOC #1	LOC #1	LOC #1	LOC #2	LOC #2	LOC #3	LOC #3	LOC #3	LOC #3	LOC #3	LOC #3	LOC #4	LOC #4	LOC #4	LOC #4	LOC #4	
		NWQ	NEQ	SEQ	SWQ	NEQ	SEQ	NWQ	NEQ	SEQ	SWQ	NWQ	SEQ	NWQ	NEQ	MEDIAN	SEQ	SWQ	
PORTLAND CEMENT CONCRETE SIDEWALK 4 INCH	SQ FT	120	136	131	185	123	110	137	425	123	107	86	125	146	117	41	82	100	2294
DETECTABLE WARNINGS	SQ FT	10	18	10	10	13	13	8	10	8	8	24	17	18	22	20	27	20	256
WATER VALVES TO BE ADJUSTED	EACH		1																1
MANHOLES TO BE ADJUSTED	EACH																		
INLETS TO BE ADJUSTED	EACH							1											1
COMBINATION CURB AND GUTTER , TYPE B-6.06	FOOT											16	20						36
COMBINATION CURB AND GUTTER , TYPE B-6.24	FOOT	6	13	13	35	13	13	24	55	6	6	52	67	16	28	31	15	18	411
CONCRETE MEDIAN SURFACE 4"	SQ FT											103	205						308
THERMOPLASTIC PAVEMENT MARKING - LINE 4"	FOOT							116		98		34	43						291
THERMOPLASTIC PAVEMENT MARKING - LINE 6"	FOOT							68		63		12	15						158
THERMOPLASTIC PAVEMENT MARKING - LINE 12"	FOOT	200	200	200	200	75	75	251	251	251	251			150	150		150	150	2554
COMBINATION CURB AND GUTTER REMOVAL	FOOT	6	13	13	35	13	13	22	55	6	5	76	90	16	19	30	15	19	446
SIDEWALK REMOVAL	SQ FT	120	136	131	185	123	110	137	350	123	104	116	128	146	117	41	82	100	2249
CONCRETE MEDIAN SURFACE REMOVAL	SQ FT											174	172						346
TEMPORARY PAVEMENT MARKING REMOVAL	SQ FT							383	178	385	197			150	150		150	150	1743
PAVEMENT MARKING REMOVAL GRINDING	SQ FT	200	200	200	200	75	75	251	251	251	251			150	150		150	150	2554



		ROYAL HEIGHTS RD				CANTEBURY RD				17TH STREET				SUB TOTALS	TOTALS
		LOC #5	LOC #5	LOC #5	LOC #5	LOC #6	LOC #6	LOC #6	LOC #6	LOC #7	LOC #7	LOC #7	LOC #7		
		NWQ	NEQ	SEQ	SWQ	NWQ	NEQ	SEQ	SWQ	NWQ	NEQ	SEQ	SWQ		
PORTLAND CEMENT CONCRETE SIDEWALK 4 INCH	SQ FT	192	158	148	84	151	134	144	122	200	164	119	129	1745	4039
DETECTABLE WARNINGS	SQ FT	8	8	8	10	38	40	26	16	8	8	8	8	186	442
WATER VALVES TO BE ADJUSTED	EACH														1
MANHOLES TO BE ADJUSTED	EACH						1							1	1
INLETS TO BE ADJUSTED	EACH														1
COMBINATION CURB AND GUTTER , TYPE B-6.06	FOOT														36
COMBINATION CURB AND GUTTER , TYPE B-6.24	FOOT	29	25	6	6	26	21	20	14	8	8	40	6	209	620
CONCRETE MEDIAN SURFACE 4"	SQ FT														308
THERMOPLASTIC PAVEMENT MARKING - LINE 4"	FOOT														291
THERMOPLASTIC PAVEMENT MARKING - LINE 6"	FOOT														158
THERMOPLASTIC PAVEMENT MARKING - LINE 12"	FOOT	174	174	174	174	121	121	121	121	174	174	174	174	1876	4430
COMBINATION CURB AND GUTTER REMOVAL	FOOT	5	5	6	6	26	21	20	14	8	8	40	6	165	611
SIDEWALK REMOVAL	SQ FT	192	158	117	86	151	134	146	122	200	164	119	129	1718	3967
CONCRETE MEDIAN SURFACE REMOVAL	SQ FT														346
TEMPORARY PAVEMENT MARKING REMOVAL	SQ FT	174	174	174	174	121	121	121	121	174	174	174	174	1876	3619
PAVEMENT MARKING REMOVAL GRINDING	SQ FT	174	174	174	174	121	121	121	121	174	174	174	174	1876	4430



1 REV 2/20/19



1 REV 2/20/19

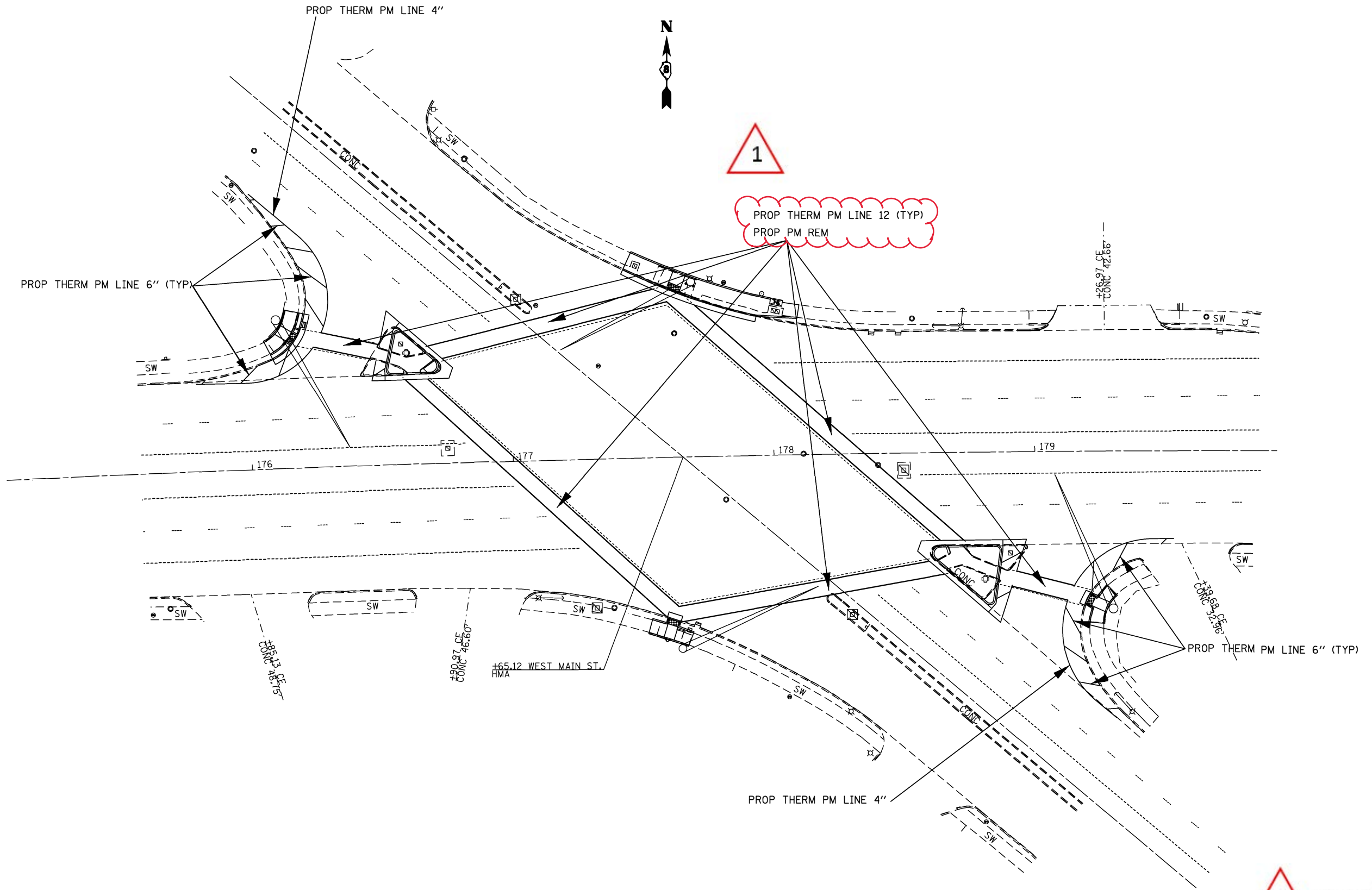
FILE NAME =	USER NAME = downingch	DESIGNED -	REVISED - 2/20/19
pw:\11\084EBID\INTEG\illinois.gov\FWIDOT\Documents\IDOT Offices\District 8\Projects\0876\DRAWING\DATA\GA\Sheets\0876J81-sht-plan.dwg			
MODELNAME	PLOT DATE = 1/22/2018	CHECKED -	REVISED -
	DATE -		

**STATE OF ILLINOIS
DEPARTMENT OF TRANSPORTATION**

**PROPOSED NORTH BELT WEST
47TH STREET**

SCALE: _____ SHEET _____ OF _____ SHEETS STA. _____ TO STA. _____

F.A.U. RTE.	SECTION	COUNTY	TOTAL SHEETS	SHEET NO.
9257	(28-1, 122-1, 122-2)SW-1	ST. CLAIR	25	8
CONTRACT NO. 76J81				
ILLINOIS FED. AID PROJECT				



1 REV 2/20/19

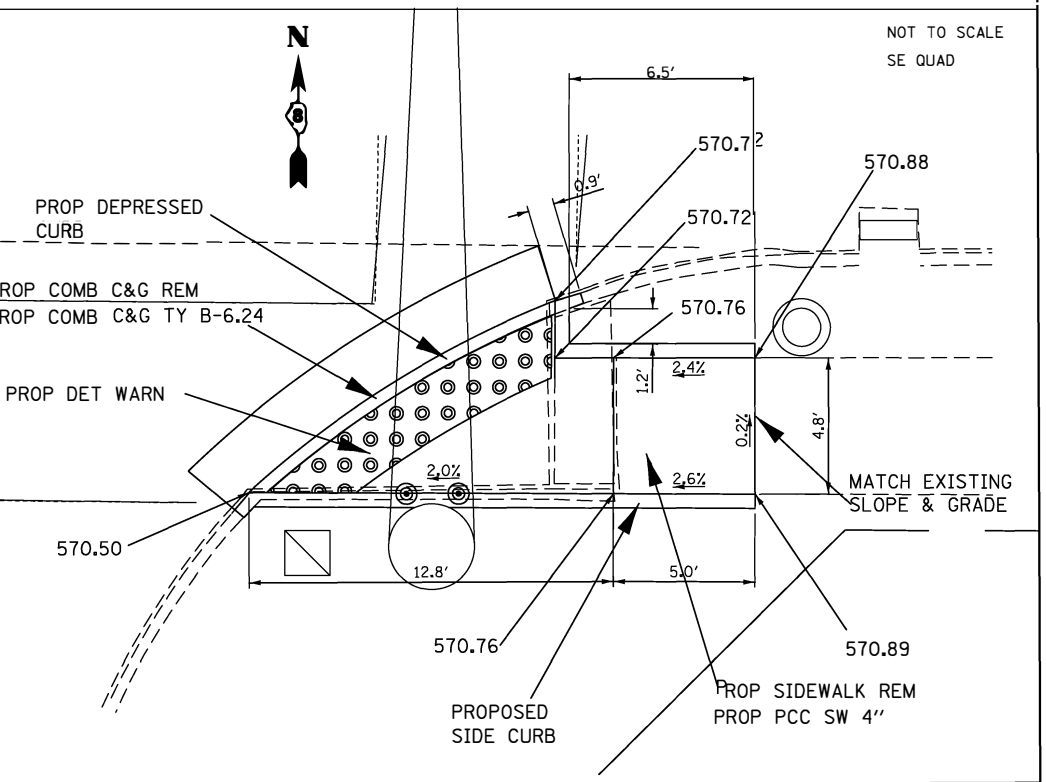
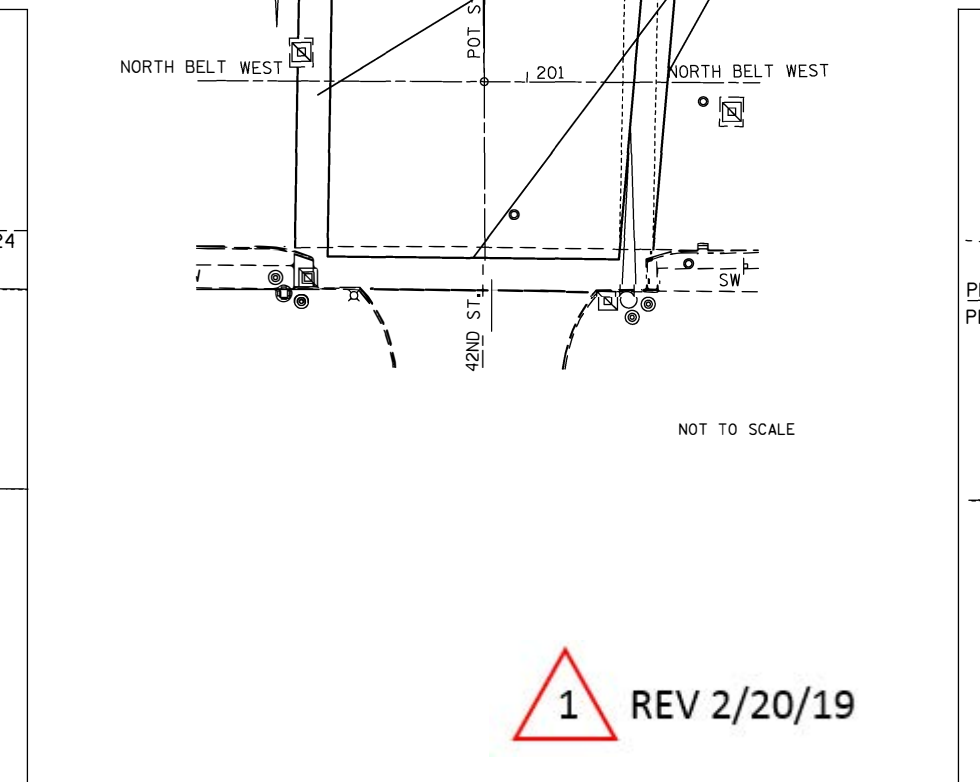
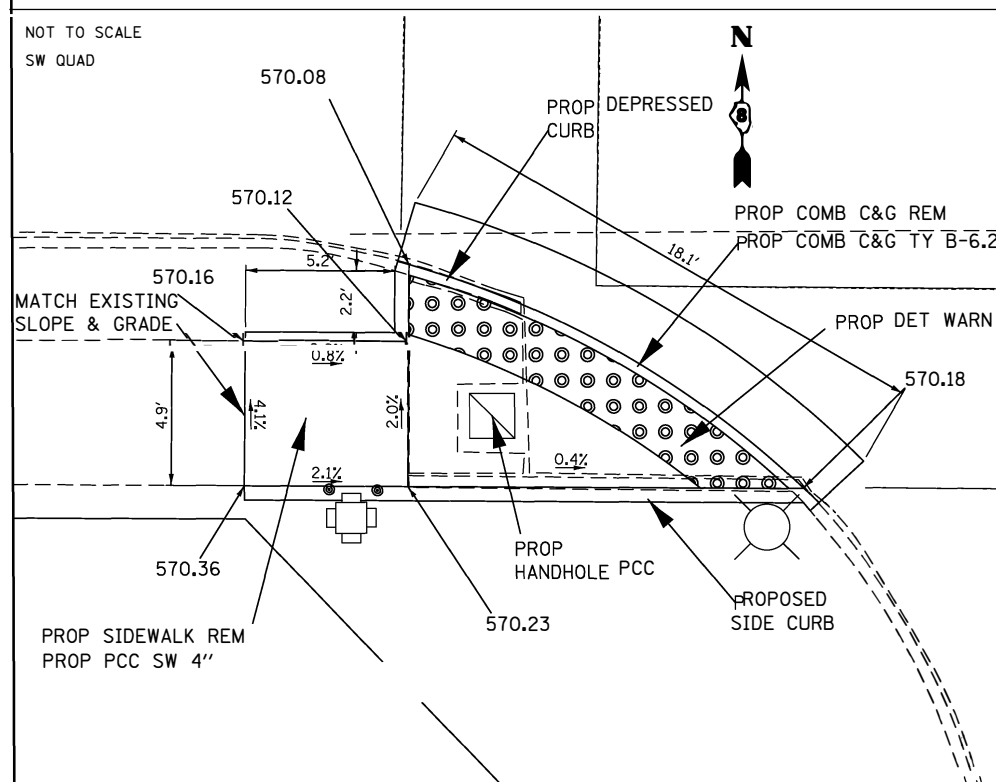
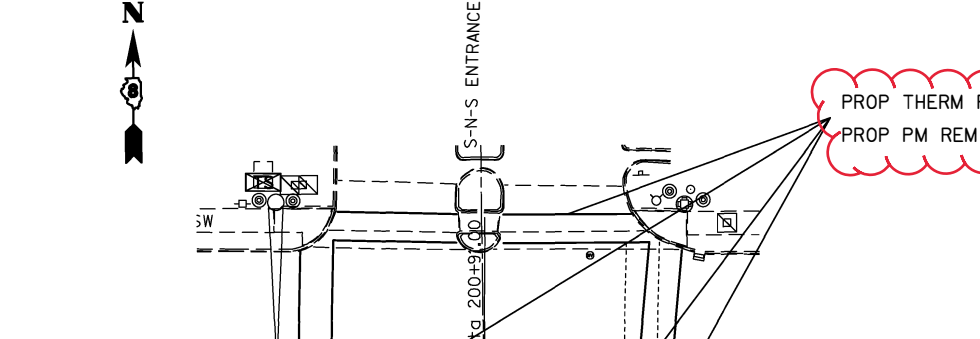
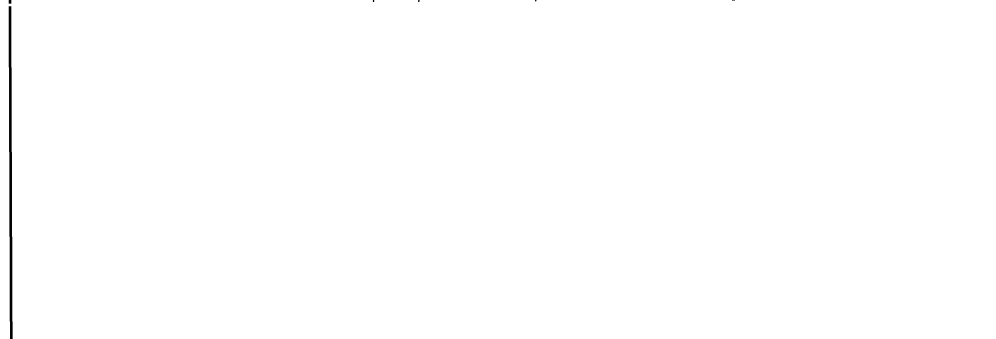
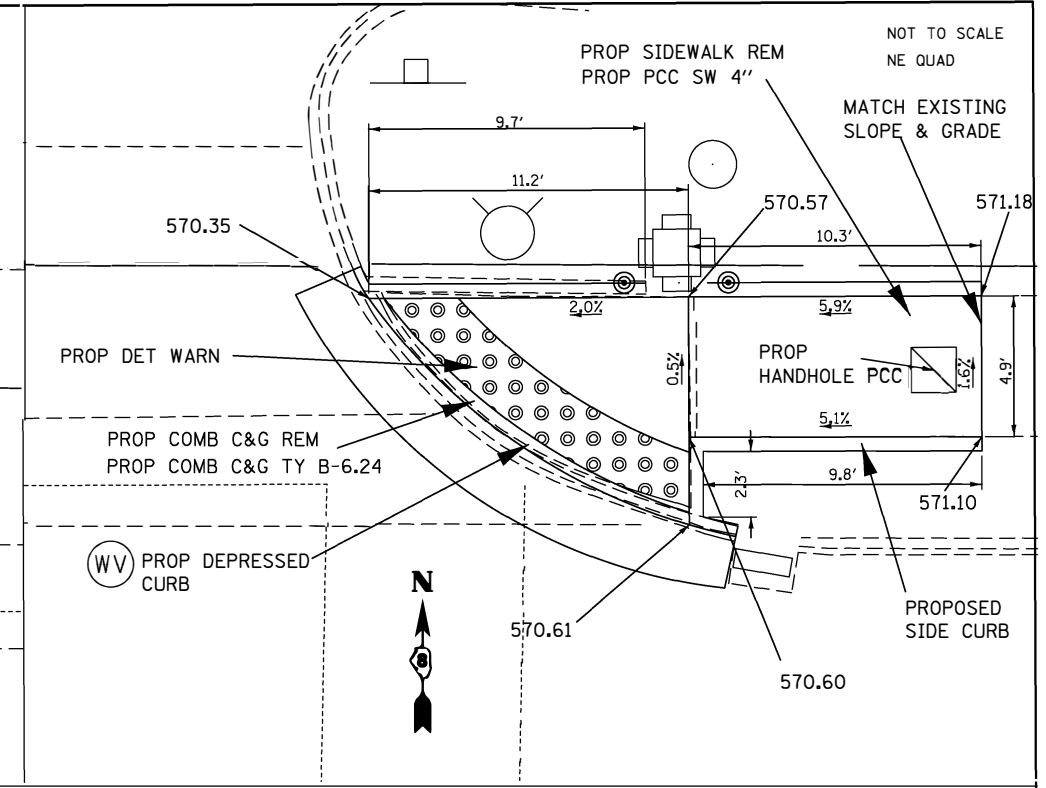
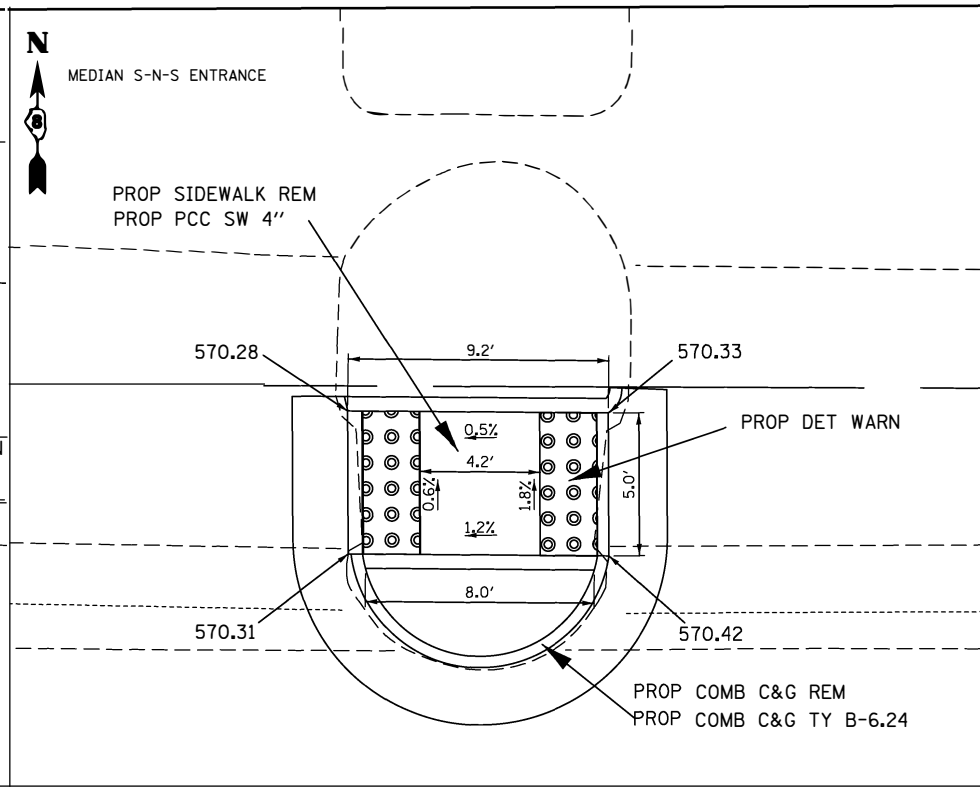
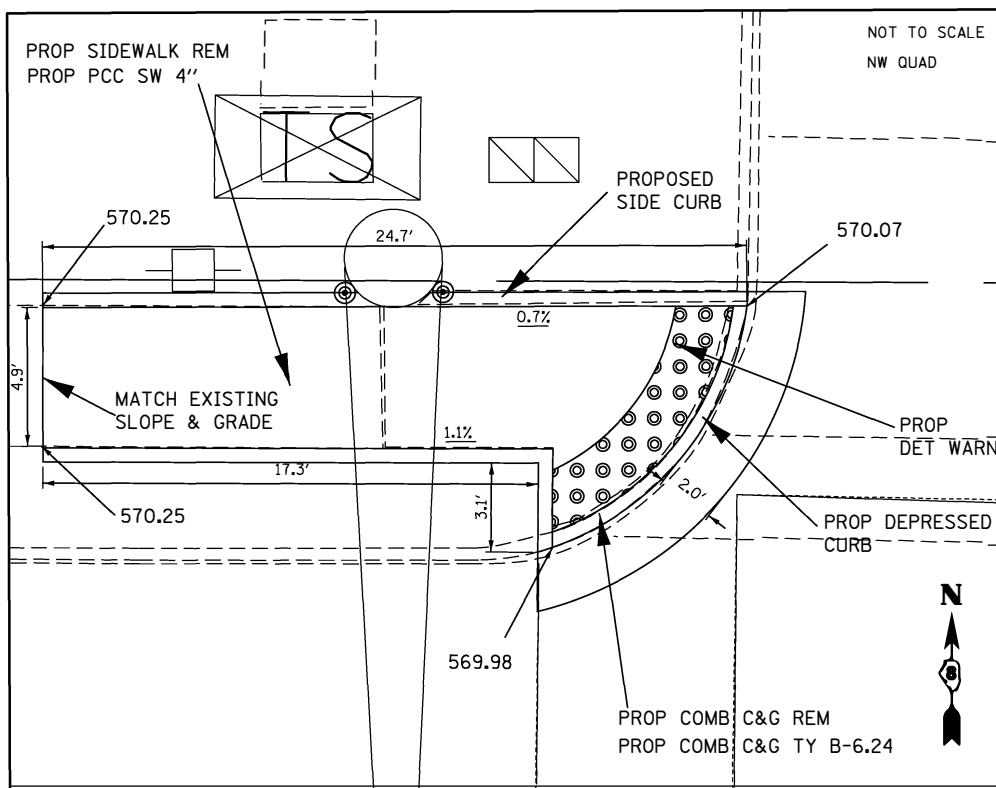
FILE NAME =	USER NAME = downingh	DESIGNED -	REVISED - 1 2/20/19
pw:\IL\084EBIDINTEG\Illinois.gov\PIDOT\Documents\IDOT Offices\District 8\Projects\0872018\0872018-001\0872018-001-001\0872018-001-001-001.dwg	PROJECT NAME = 6AD\0872018-001-001-001	CHECKED -	REVISED -
MODELNAME	PLOT DATE = 1/22/2018	DATE -	REVISED -

**STATE OF ILLINOIS
DEPARTMENT OF TRANSPORTATION**

**PROPOSED NORTH BELT WEST
WEST MAIN PAVEMENT MARKING**

F.A.L. RTE.	SECTION	COUNTY	TOTAL SHEETS	SHEET NO.
9257	128-1, 122-1, 122-2/5W-1	ST. CLAIR	25	9
CONTRACT NO. 76J81				
ILLINOIS FED. AID PROJECT				

SCALE: _____ SHEET ____ OF ____ SHEETS STA. _____ TO STA. _____



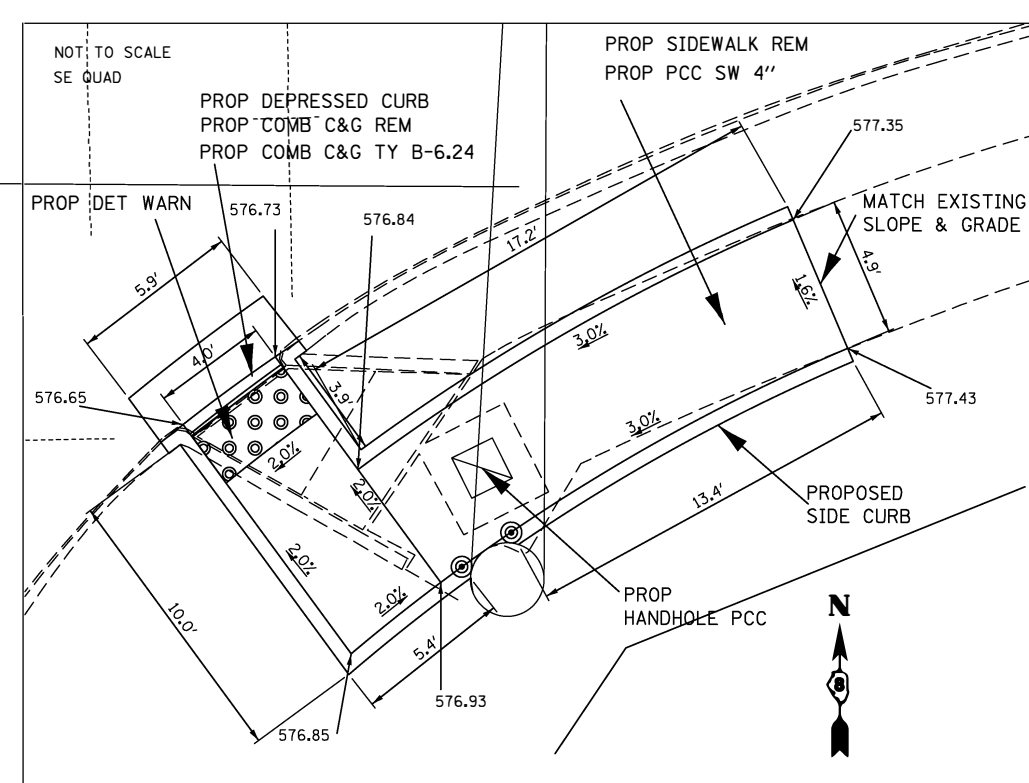
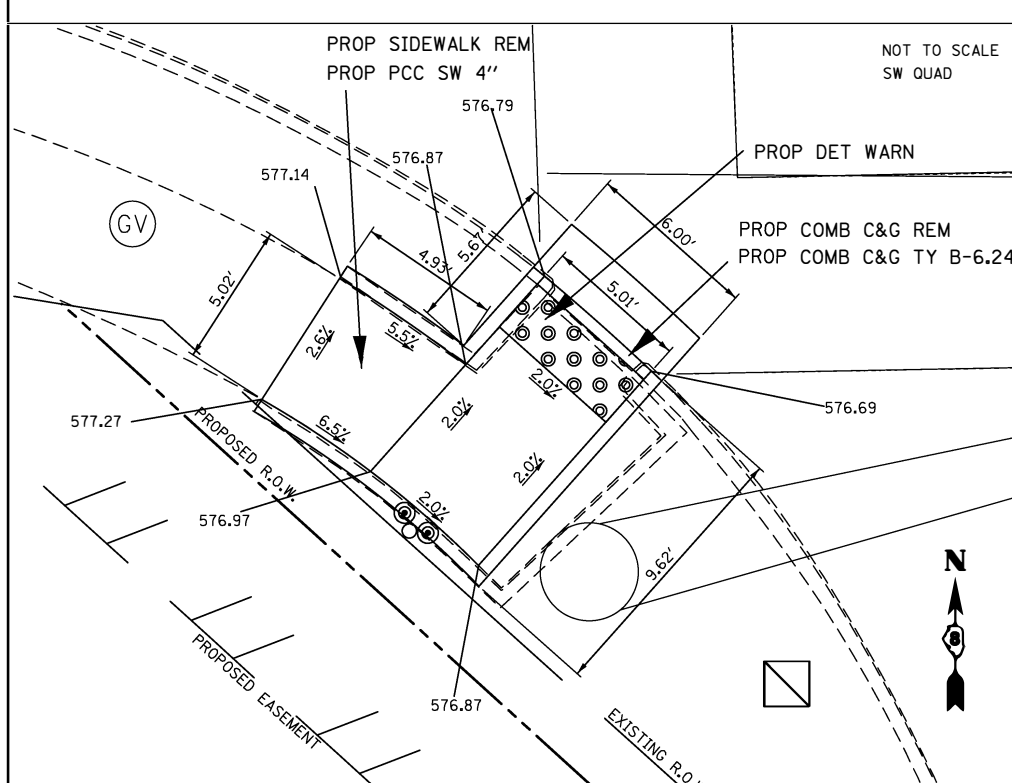
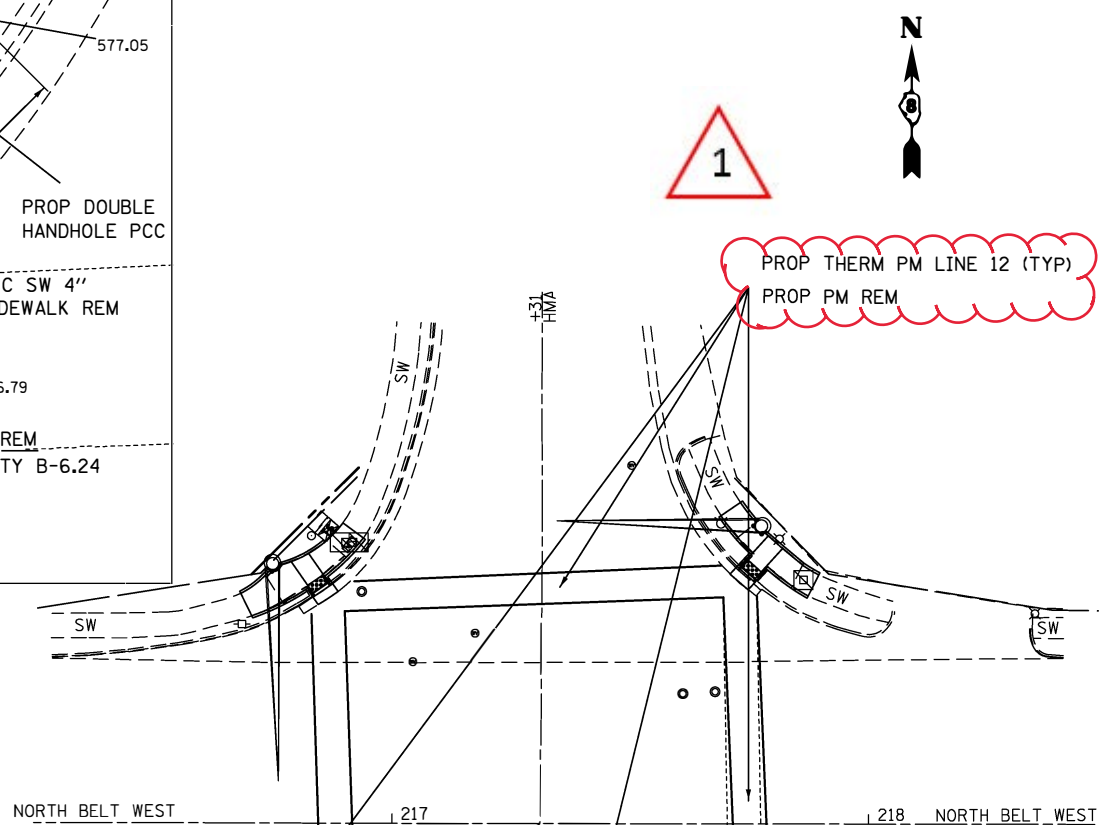
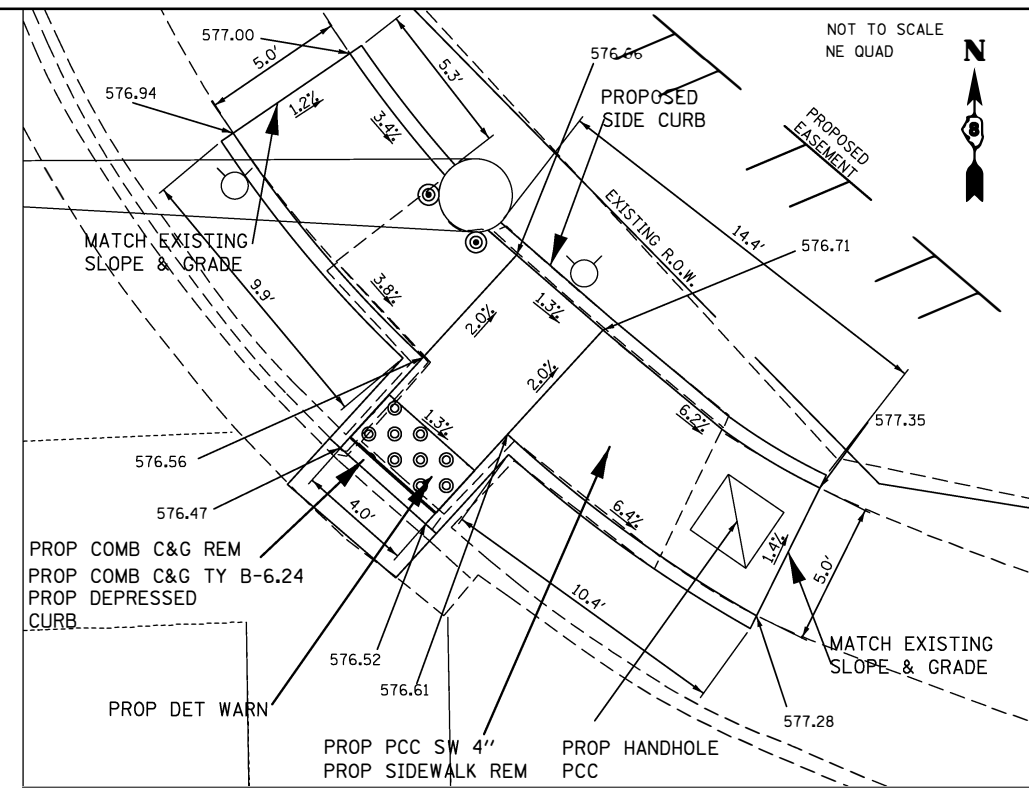
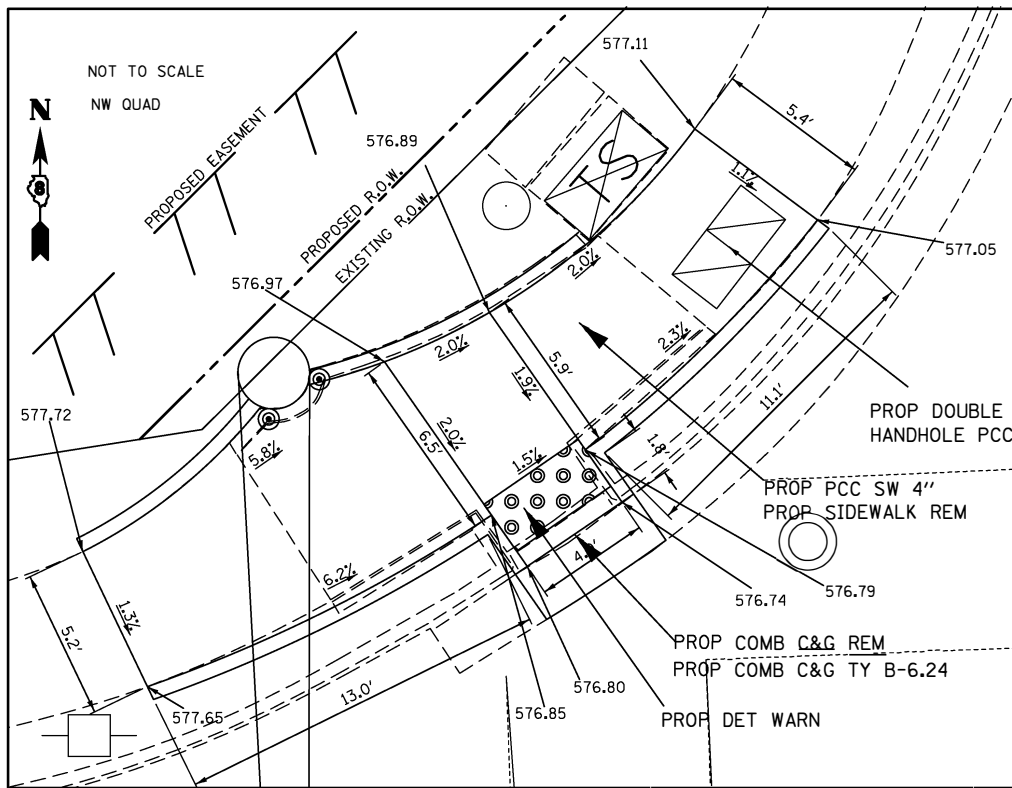
FILE NAME =	USER NAME = downingh	DESIGNED -	REVISED -
pw\ILB84EBIDINTEG.illinois.gov\PIWIDOT\Do	ments\DOT Offices\District 8\Projects\087	DATA\GAD\Sheets\0876J81-sht-plan.d	REVISED -
#MODELNAME*	PLOT SCALE = 48.3061' / in.	CHECKED -	REVISED -
	PLOT DATE = 1/22/2018	DATE -	REVISED -

**STATE OF ILLINOIS
DEPARTMENT OF TRANSPORTATION**

**PROPOSED NORTH BELT WEST
42ND ST. S-N-S**

F.A.U. RTE.	SECTION	COUNTY	TOTAL SHEETS	SHEET NO.
9257	(28-1, 122-1, 122-2)SW-1	ST. CLAIR	25	12
CONTRACT NO. 76J81				
ILLINOIS FED. AID PROJECT				

1 REV 2/20/19



1 REV 2/20/19

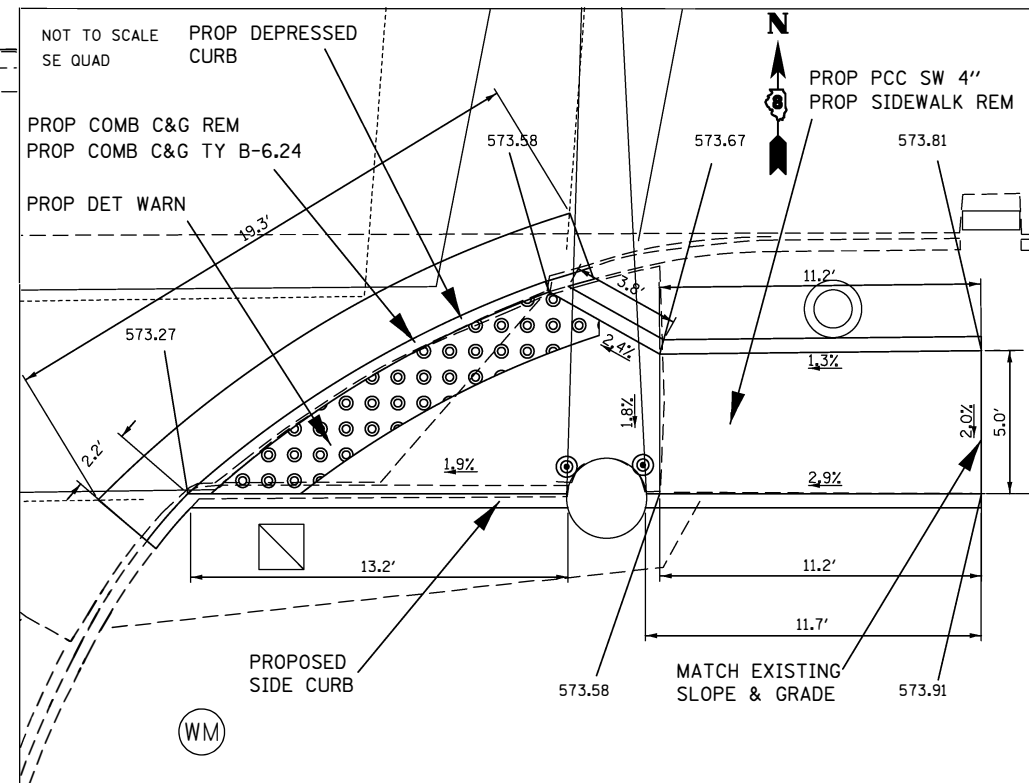
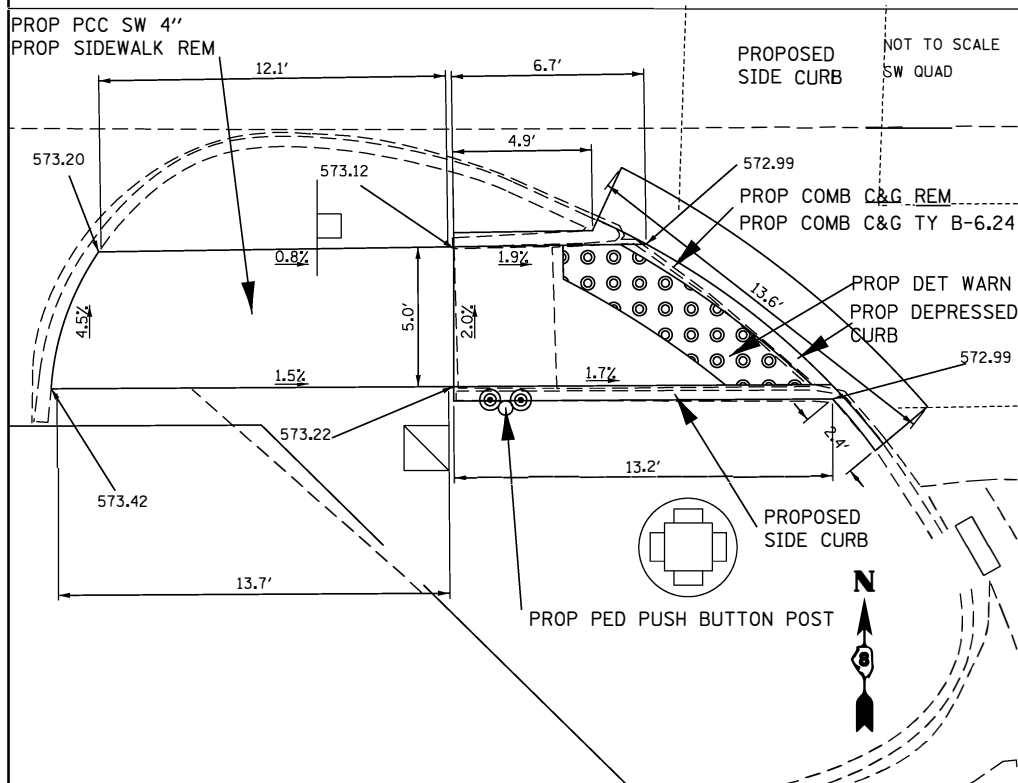
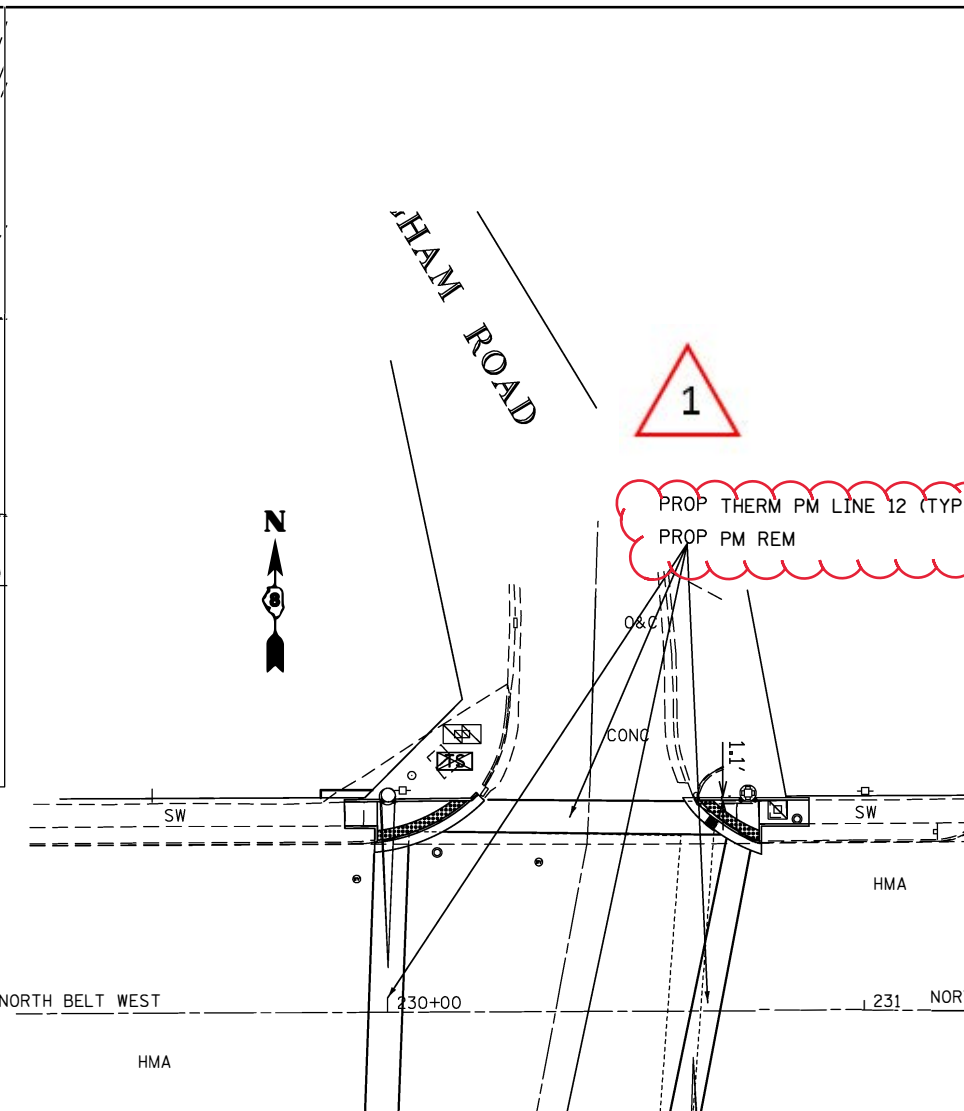
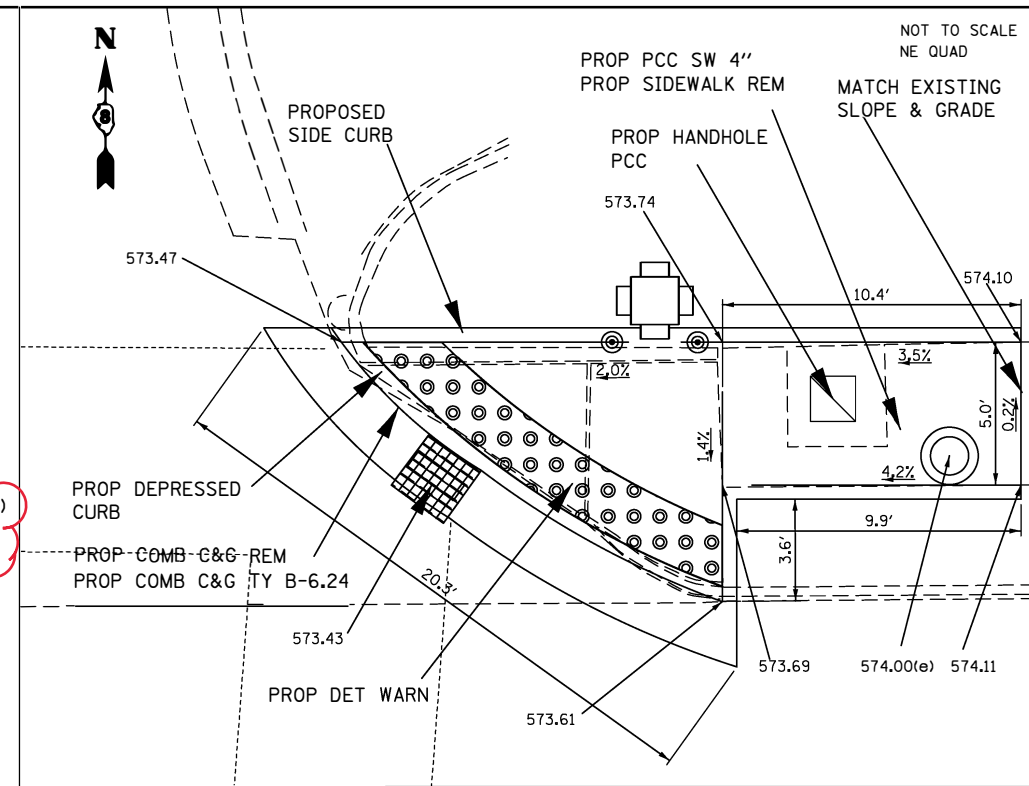
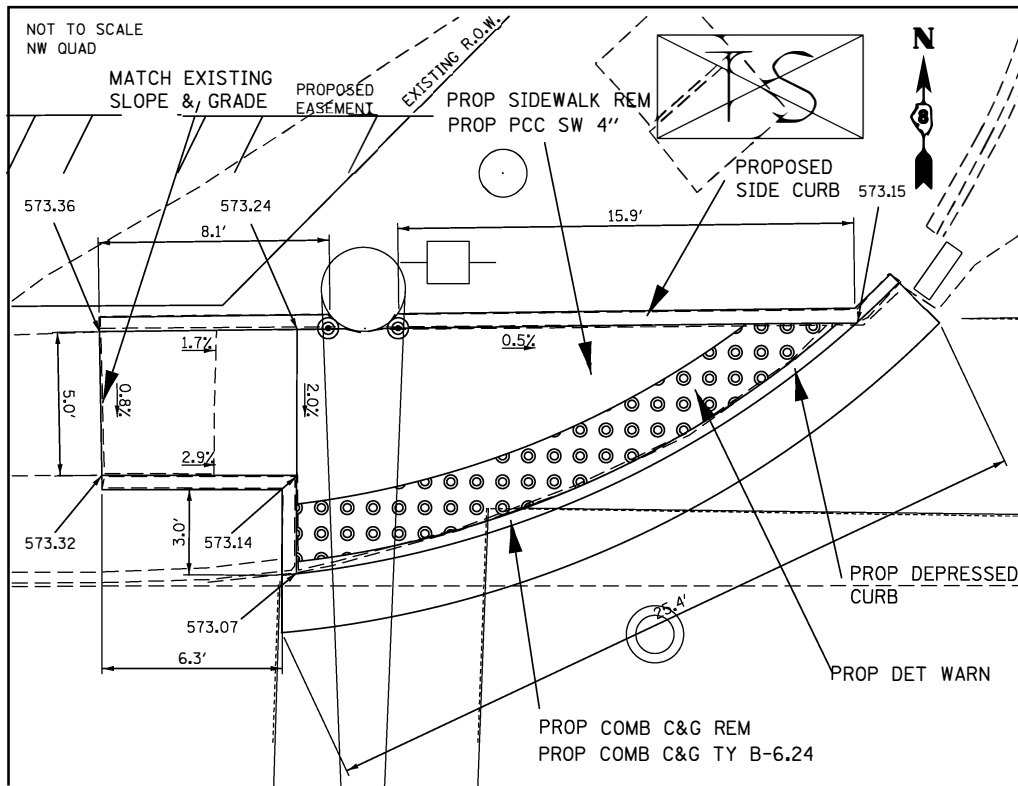
FILE NAME =	USER NAME = downingoh	DESIGNED -	REVISED - 2/20/19
pw\IL084EBIDINTEG.illinois.gov\PIDOT\Documents\DOT Offices\District 8\Projects\DR\DR\Drawings\GAD\Sheets\N876J81-sh1-plend		CHECKED -	REVISED -
MODELNAME	PLOT SCALE = 40.3861' / 1" /	DATE -	REVISED -
	PLOT DATE = 1/22/2018		

STATE OF ILLINOIS
DEPARTMENT OF TRANSPORTATION

PROPOSED NORTH BELT WEST
ROYAL HEIGHTS RD.

SCALE: SHEET OF SHEETS STA. TO STA.

F.A.U. RTE. 9257	SECTION (28-1, 122-1, 122-2)SW-1	COUNTY ST. CLAIR	TOTAL SHEETS 25	SHEET NO. 13
				CONTRACT NO. 76J81
ILLINOIS FED. AID PROJECT				



1 REV 2/20/19

FILE NAME =	USER NAME = downingh	DESIGNED -	REVISED -
p:\1\1084\EBIDINTEG\Illinois.gov\PIDOT\Documents\IDOT Offices\District 8\Projects\0875\DR\DWG\GAD\Sheets\0875\81-sht-pland		2/20/19	
#MODELNAME#	PLOT DATE = 1/22/2018	CHECKED -	REVISED -
		DATE -	REVISED -

STATE OF ILLINOIS
DEPARTMENT OF TRANSPORTATION

PROPOSED NORTH BELT WEST
CANTEBURY RD.

SCALE: _____ SHEET _____ OF _____ SHEETS STA. _____ TO STA. _____

F.A.U. RTE.	SECTION	COUNTY	TOTAL SHEETS	SHEET NO.
9257	(28-1, 122-1, 122-2)SW-1	ST. CLAIR	25	14
CONTRACT NO. 76J81				
ILLINOIS FED. AID PROJECT				

