

STATE OF ILLINOIS
DEPARTMENT OF TRANSPORTATION

| F.A.P. RTE. | SECTION | COUNTY | TOTAL SHEETS | SHEET NO. |
|-------------|-----------|----------|--------------------|-----------|
| 840 | (123) SFY | IROQUOIS | 8 | 1 |
| | | ILLINOIS | CONTRACT NO. 66J11 | |

INDEX OF SHEETS

- 1 COVER SHEET
- 2 GENERAL NOTES
- 3 LOCATION MAP
- 4-5 SUMMARY OF QUANTITIES
- 6 TYPICAL SECTIONS
- 7 SCHEDULES
- 8 DETAILS

HIGHWAY STANDARDS

- 000001-07 STANDARD SYMBOLS, ABBREVIATIONS AND PATTERNS
- 001006 DECIMAL OF AN INCH AND OF A FOOT
- 406201-01 MAILBOX TURNOUT
- 482001-11 HMA SHOULDER ADJACENT TO FLEXIBLE PAVEMENT
- 482006-03 HMA SHOULDER ADJACENT TO RIGID PAVEMENT
- 642006 SHOULDER RUMBLE STRIPS, 8 INCH
- 701006-05 OFF-ROAD OPERATIONS 2L, 2W, 15' (4.5 m) TO 24" (600 mm) FROM PAVEMENT EDGE
- 701311-03 LANE CLOSURE, 2L, 2W, MOVING OPERATIONS - DAY ONLY
- 701326-04 LANE CLOSURE, 2L, 2W, PAVEMENT WIDENING, FOR SPEEDS \geq 45 MPH
- 701901-08 TRAFFIC CONTROL DEVICES

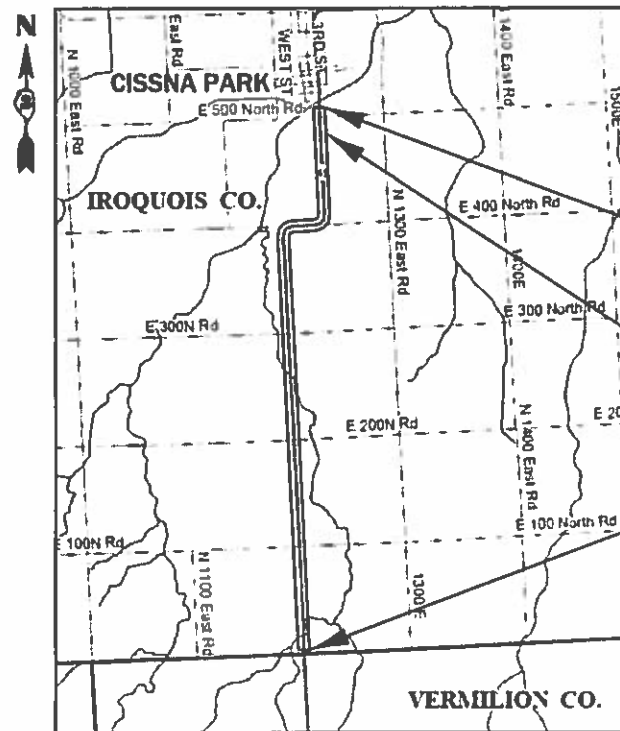
**PROPOSED
HIGHWAY PLANS**

FAP ROUTE 840 (IL 49)
SECTION (123) SFY
PROJECT: HSIP-FGZX (019)
SHOULDER WIDENING AND RUMBLE STRIPS
IROQUOIS COUNTY

C-93-056-18



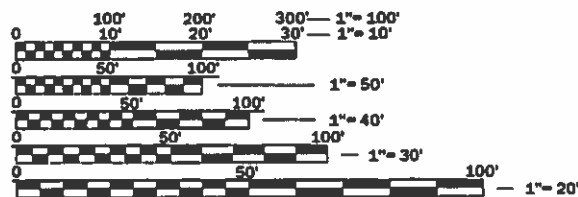
IL 49 - MINOR ARTERIAL
2017 ADT = 1,500
P.V. = 80.0% S.U. = 9.3% M.U. = 10.7%



PROJECT ENDS
200' SOUTH OF MUD CREEK
STA 282+50

STATION EQUATION
STA 274+85 BK = STA 275+00 AH

PROJECT BEGINS
JUST NORTH OF E 4300N RD
STA 0+40



FULL SIZE PLANS HAVE BEEN PREPARED USING STANDARD ENGINEERING SCALES. REDUCED SIZED PLANS WILL NOT CONFORM TO STANDARD SCALES. IN MAKING MEASUREMENTS ON REDUCED PLANS, THE ABOVE SCALES MAY BE USED.

J.U.L.I.E.
JOINT UTILITY LOCATION INFORMATION FOR EXCAVATION
1-800-892-0123
OR 811

PROJECT ENGINEER: JOE KANNEL, P.E.
UNIT CHIEF: MARC BUDZYNSKI, P.E.
DISTRICT 3 NO. (815) 434-6131
CONTRACT NO. 66J11

GROSS LENGTH = 28,195 FT. = 5.34 MILES
NET LENGTH = 26,186 FT. = 4.96 MILES

STATE OF ILLINOIS
DEPARTMENT OF TRANSPORTATION

SUBMITTED 12-17 2018
Kevin Marchuk, P.E.
REGIONAL ENGINEER

Feb 1 2019
[Signature]
ENGINEER OF DESIGN AND ENVIRONMENT

Feb 1 2019
[Signature]
DIRECTOR OF HIGHWAYS PROJECT IMPLEMENTATION

PRINTED BY THE AUTHORITY
OF THE STATE OF ILLINOIS

GENERAL NOTES

THE THICKNESS OF HMA SHOWN ON THE PLANS IS THE NOMINAL THICKNESS. DEVIATIONS FROM THE NOMINAL THICKNESS WILL BE PERMITTED WHEN SUCH DEVIATIONS OCCUR DUE TO IRREGULARITIES IN THE EXISTING SURFACE OR BASE ON WHICH THE HMA IS PLACED.

THE HMA SURFACE OF ALL MAILBOX TURNOUTS, PRIVATE ENTRANCES, COMMERCIAL ENTRANCES, AND SIDE ROADS SHALL BE MADE NEATLY, IN A WORKMANLIKE MANNER, AND SHALL ACCURATELY CONFORM TO THE SHAPES AND DIMENSIONS SHOWN ON THE PLAN DETAILS. IF REQUIRED BY THE ENGINEER, THE CONTRACTOR SHALL SAW CUT THE HMA SURFACE TO CONFORM TO THE SHAPES AND DIMENSIONS SHOWN ON THE PLAN DETAILS. THIS WORK WILL BE INCLUDED IN THE COST OF THE HMA SURFACE.

THE ENGINEER WILL BE THE SOLE JUDGE CONCERNING CURING TIME FOR THE VARIOUS HMA LIFTS.

FOR STABILIZATION, ALL TYPE III BARRICADES WILL REQUIRE A MINIMUM OF FOUR SAND BAGS PER BARRICADE.

SEEDING WILL NOT BE PERMITTED AT ANY TIME WHEN THE GROUND IS FROZEN, WET, OR IN AN UNTILLABLE CONDITION. LOCATIONS TO BE SEEDED WILL BE DETERMINED BY THE ENGINEER.

ANY REFERENCE TO A STANDARD IN THESE PLANS SHALL BE INTERPRETED TO MEAN THE EDITION AS INDICATED BY THE SUBNUMBER SHOWN IN THE LIST OF STANDARDS OR THE COPY INCLUDED IN THESE PLANS.

THE FOLLOWING RATES OF APPLICATION HAVE BEEN USED IN CALCULATING PLAN QUANTITIES:

| | | |
|--------------------|------|------------------|
| GRANULAR MATERIALS | 2.05 | TONS / CU YD |
| HMA RESURFACING | 112 | LBS / SQ YD / IN |

ALL DAMAGE TO DEPARTMENT OWNED UNDERGROUND FACILITIES, CAUSED BY THE CONTRACTOR SHALL BE REPAIRED TO THE SATISFACTION OF THE DEPARTMENT AT THE CONTRACTOR'S EXPENSE. THIS SHALL INCLUDE ALL TEMPORARY REPAIRS REQUIRED TO KEEP THE FACILITY OPERATIONAL WHILE MATERIAL IS BEING OBTAINED TO MAKE PERMANENT REPAIRS. SPLICING OF ELECTRIC CABLE WILL NOT BE ALLOWED. ELECTRIC CABLE SHALL BE REPLACED FROM POLE TO POLE OR CONTROLLER.

THE CONTRACTOR SHALL CONTACT JULIE AT LEAST 48 HOURS PRIOR TO EXCAVATION TO DETERMINE WHICH UTILITIES ARE IN THE AREA.

| LOCATION(S): | ENTIRE PROJECT | ENTIRE PROJECT |
|---|----------------------------|---------------------------|
| MIXTURE USE(S): | SHOULDER BOTTOM LIFT(S) | SHOULDER TOP LIFT (2") |
| BINDER GRADE (PG): | PG 64-22 | PG 64-22 |
| DESIGN AIR VOIDS: | 4.0% @ N50 | 4.0% @ N50 |
| MIXTURE COMPOSITION: (MIXTURE GRADATION) | 1L-19.0 | 1L-9.5 FG |
| FRICITION AGGREGATE: | - | - |
| MIXTURE WEIGHT: | 112.0 LB/SY/IN | 112.0 LB/SY/IN |
| QUALITY MANAGEMENT PROGRAM: | QC/QA | QC/QA |
| SUBLOT SIZE: | N/A | N/A |
| DENSITY TEST METHOD: | CORES | CORES |

COMMITMENTS:

STATE OF ILLINOIS
DEPARTMENT OF TRANSPORTATION
DISTRICT THREE
AS BUILT INFORMATION

SUPERVISING CONSTRUCTION FIELD ENGINEER

RESIDENT ENGINEER / TECHNICIAN

START & END DATES
OF CONSTRUCTION:

INSPECTORS:

STATE OF ILLINOIS
DEPARTMENT OF TRANSPORTATION
DISTRICT THREE

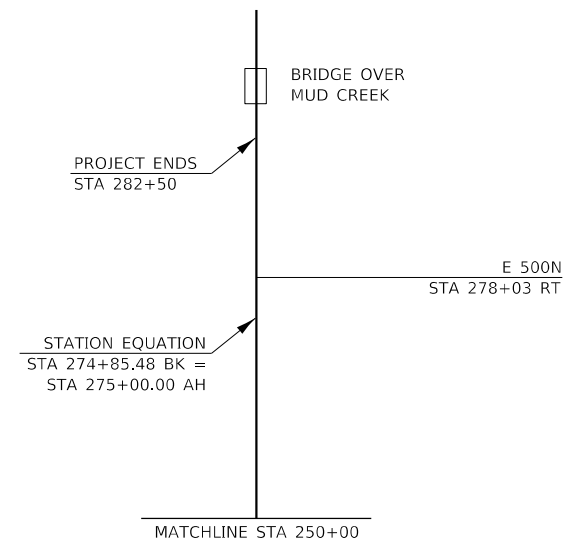
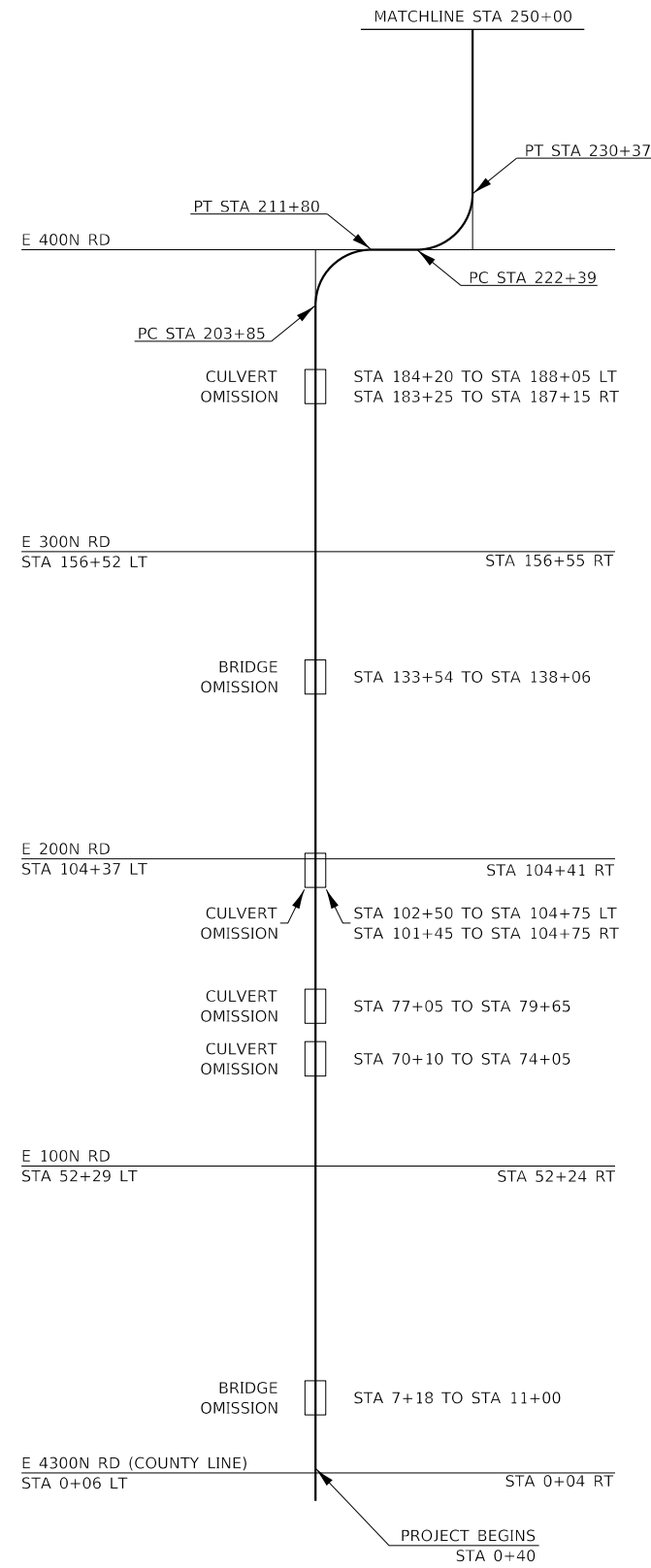
PREPARED BY: *Tom Benik*
DISTRICT STUDIES & PLANS ENGINEER

DATE: 12-17-18

EXAMINED BY: *KSV*
DISTRICT CONSTRUCTION ENGINEER

Michael Ash
DISTRICT MATERIALS ENGINEER

Tom Benik
DISTRICT OPERATIONS ENGINEER



| | | | |
|--|------------------------|------------|-----------|
| FILE NAME = | USER NAME = budzynsklm | DESIGNED - | REVISED - |
| pw:\il084EBIDINTEG\ilnotes.gov\PWIDOT\Documents\DOT Office\District 3\Projects\0366J11\CADDData\0366J11-shk-cv | | DRAWN - | REVISED - |
| Default | | CHECKED - | REVISED - |
| | PLOT DATE = 12/7/2018 | DATE - | REVISED - |

**STATE OF ILLINOIS
DEPARTMENT OF TRANSPORTATION**

| | | | |
|---------------------|------------|----------------|------------------------|
| LOCATION MAP | | | |
| SCALE: ____ | SHEET ____ | OF ____ SHEETS | STA. ____ TO STA. ____ |

| | | | | |
|---------------------------|-----------|----------|--------------|-----------|
| F.A.P. RTE. | SECTION | COUNTY | TOTAL SHEETS | SHEET NO. |
| 840 | (123) SFY | IROQUOIS | 8 | 3 |
| CONTRACT NO. 66J11 | | | | |
| ILLINOIS FED. AID PROJECT | | | | |

| CODE NO. | ITEM | UNIT | 90% FED 10% STATE | |
|------------|---|--------|----------------------|--------------------------|
| | | | TOTAL QUANTITY | CONSTR. CODE |
| | | | | ROADWAY 0021 RURAL |
| 20200100 | EARTH EXCAVATION | CU YD | 4 | 4 |
| 35100100 | AGGREGATE BASE COURSE, TYPE A | TON | 6 | 6 |
| 40600290 | BITUMINOUS MATERIALS (TACK COAT) | POUND | 10438 | 10438 |
| 40800050 | INCIDENTAL HOT-MIX ASPHALT SURFACING | TON | 4.9 | 4.9 |
| 44000157 | HOT-MIX ASPHALT SURFACE REMOVAL, 2" | SQ YD | 25 | 25 |
| 48203029 | HOT-MIX ASPHALT SHOULDERS, 8" | SQ YD | 23149 | 23149 |
| 64200108 | SHOULDER RUMBLE STRIPS, 8 INCH | FOOT | 52082 | 52082 |
| * 66900200 | NON-SPECIAL WASTE DISPOSAL | CU YD | 210 | 210 |
| * 66900530 | SOIL DISPOSAL ANALYSIS | EACH | 5 | 5 |
| * 66901001 | REGULATED SUBSTANCES PRE-CONSTRUCTION PLAN | LSUM | 1.0 | 1.0 |
| * 66901002 | ON-SITE MONITORING OF REGULATED SUBSTANCES | CAL DA | 5 | 5 |
| 66901003 | REGULATED SUBSTANCES FINAL CONSTRUCTION REPORT | LSUM | 1.0 | 1.0 |
| 67100100 | MOBILIZATION | L SUM | 1.0 | 1.0 |
| 70100500 | TRAFFIC CONTROL AND PROTECTION, STANDARD 701326 | L SUM | 1.0 | 1.0 |

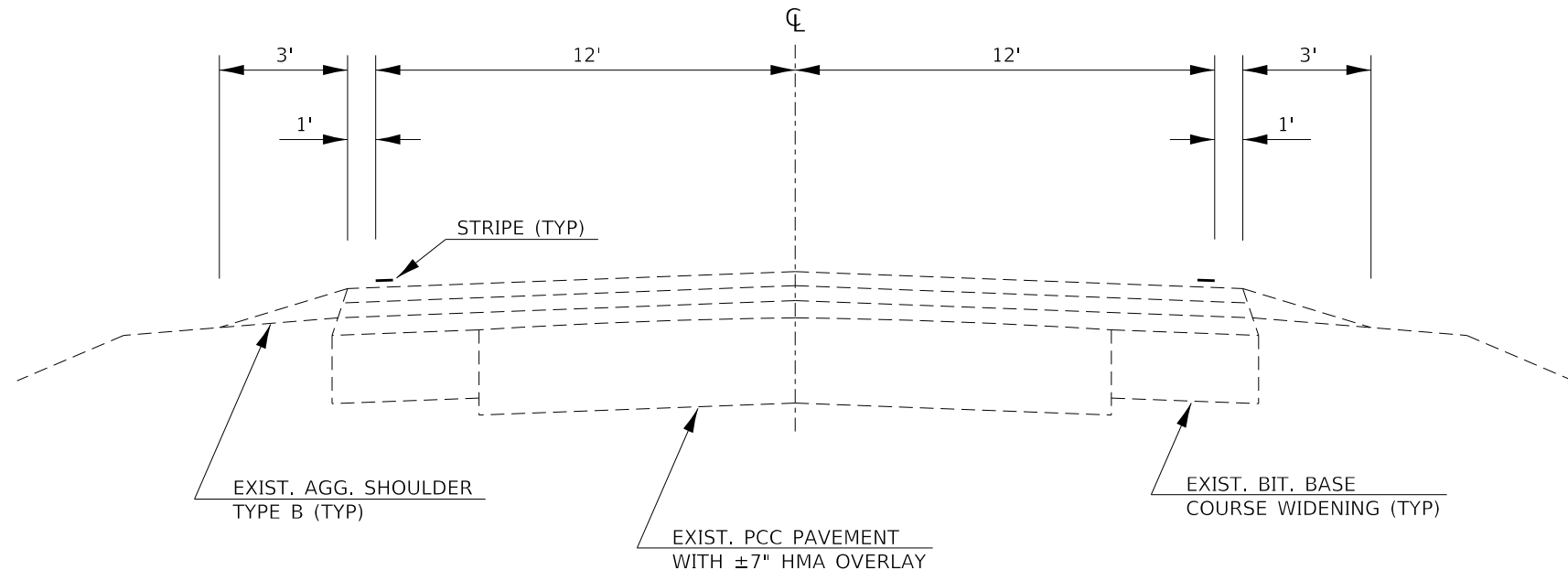
*= SPECIALTY ITEM

| | | | | | | | | | | | | |
|---|------------------------------|------------------|-----------------|---|------------------------------|---------------------|--------------------------|---------------------------|----------|--------|--------------|-----------|
| FILE NAME = | USER NAME = budzynsklm | DESIGNED - _____ | REVISED - _____ | STATE OF ILLINOIS DEPARTMENT OF TRANSPORTATION | SUMMARY OF QUANTITIES | | | F.A.P. RTE. | SECTION | COUNTY | TOTAL SHEETS | SHEET NO. |
| pw:\il084EBIDINTEG\ilnotes\gov\PWIDOT\Documents\DOT Office\District 3\Projects\0366J11\CADDData\0366J11-sht-cov | DRAWN - _____ | REVISED - _____ | 840 | | | | | (123) SFY | IROQUOIS | 8 | 4 | |
| Default | PLOT SCALE = 100.0000' / in. | CHECKED - _____ | REVISED - _____ | | CONTRACT NO. 66J11 | | | ILLINOIS FED. AID PROJECT | | | | |
| | PLOT DATE = 12/7/2018 | DATE - _____ | REVISED - _____ | | SCALE: _____ | SHEET _ OF _ SHEETS | STA. _____ TO STA. _____ | | | | | |

| CODE NO. | ITEM | UNIT | TOTAL QUANTITY | CONSTR. CODE | |
|------------|----------------------------------|--------|----------------|----------------------|--------|
| | | | | 90% FED 10% STATE | |
| | | | | ROADWAY | |
| | | | | 0021 | |
| | | | | RURAL | |
| 70103815 | TRAFFIC CONTROL SURVEILLANCE | CAL DA | 5 | | 5 |
| * 78001110 | PAINT PAVEMENT MARKING - LINE 4" | FOOT | 112780 | | 112780 |
| X0800001 | SHOULDER REMOVAL (SPECIAL) | SQ YD | 23149 | | 23149 |
| Z0030850 | TEMPORARY INFORMATION SIGNING | SQ FT | 42 | | 42 |

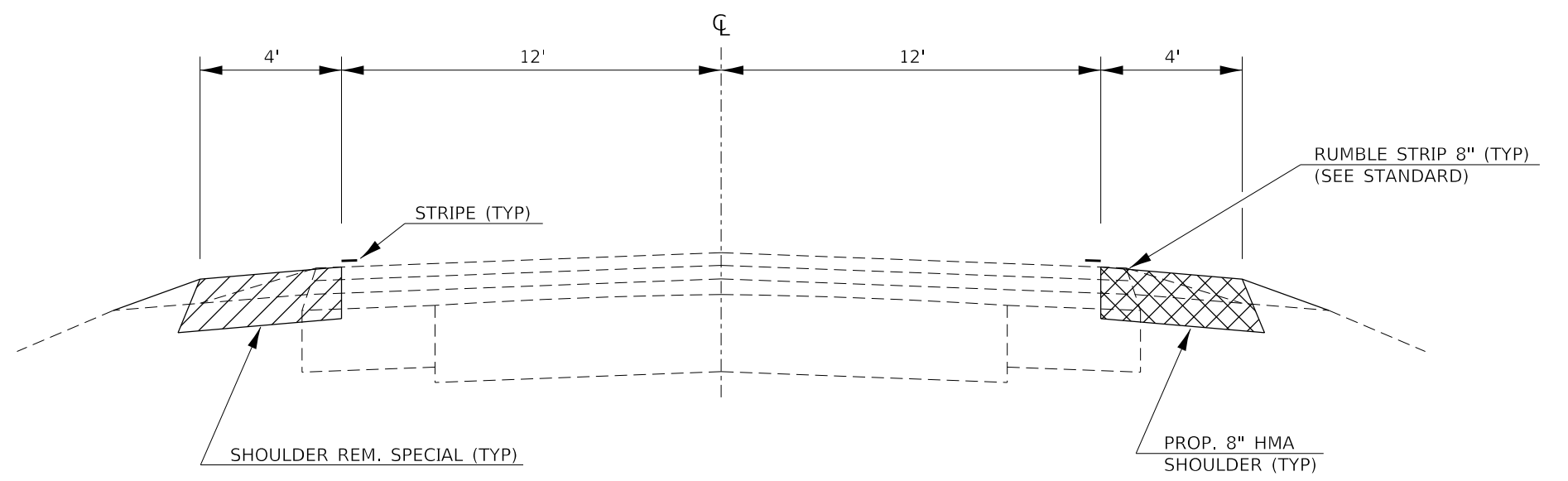
*= SPECIALTY ITEM

| | | | | | | | | | | | |
|---|------------------------------|------------------|-----------------|---|------------------------------|--------------------|---------------------|------------|---------------|---------------------------|--|
| FILE NAME = | USER NAME = budzynsklm | DESIGNED - _____ | REVISED - _____ | STATE OF ILLINOIS DEPARTMENT OF TRANSPORTATION | SUMMARY OF QUANTITIES | F.A.P. RTE.: | SECTION | COUNTY | TOTAL SHEETS | SHEET NO. | |
| pw:\il084EBIDINTEG\ilnotes.gov\PWIDOT\Documents\DOT Office\District 3\Projects\0366J11\CADDData\0366J11-sht-cov | DRAWN - _____ | REVISED - _____ | 840 | | | (123) SFY | IROQUOIS | 8 | 5 | | |
| Default | PLOT SCALE = 100.0000' / in. | CHECKED - _____ | REVISED - _____ | | | CONTRACT NO. 66J11 | | | | | |
| | PLOT DATE = 12/7/2018 | DATE - _____ | REVISED - _____ | | | SCALE: _____ | SHEET _ OF _ SHEETS | STA. _____ | TO STA. _____ | ILLINOIS FED. AID PROJECT | |



EXISTING TYPICAL SECTION

STA 0+40 TO STA 282+50
(SEE SCHEDULE FOR OMISSIONS)



PROPOSED TYPICAL SECTION

STA 0+40 TO STA 282+50
(SEE SCHEDULE FOR OMISSIONS)

| | | | | | | | | | | | |
|--|------------------------------|------------|-----------|---|-----------------------------|--------------------------|---------------------------|----------|--------|--------------|-----------|
| FILE NAME = | USER NAME = budzynsklm | DESIGNED - | REVISED - | STATE OF ILLINOIS DEPARTMENT OF TRANSPORTATION | TYPICAL SECTIONS | | F.A.P. RTE. = | SECTION | COUNTY | TOTAL SHEETS | SHEET NO. |
| pw:\il084EBID\INTEG.\ilnotes.gov\PWIDOT\Documents\DOT\Office\District 3\Projects\D366J11\CADDData\D366J11-shd-cove | DRAWN - | REVISED - | 840 | | | | (123) SFY | IROQUOIS | 8 | 6 | |
| Default | PLOT SCALE = 100.0000' / in. | CHECKED - | REVISED - | | | | CONTRACT NO. 66J11 | | | | |
| | PLOT DATE = 1/2/2019 | DATE - | REVISED - | | | | ILLINOIS FED. AID PROJECT | | | | |
| | | | | SCALE: _____ | SHEET _____ OF _____ SHEETS | STA. _____ TO STA. _____ | | | | | |

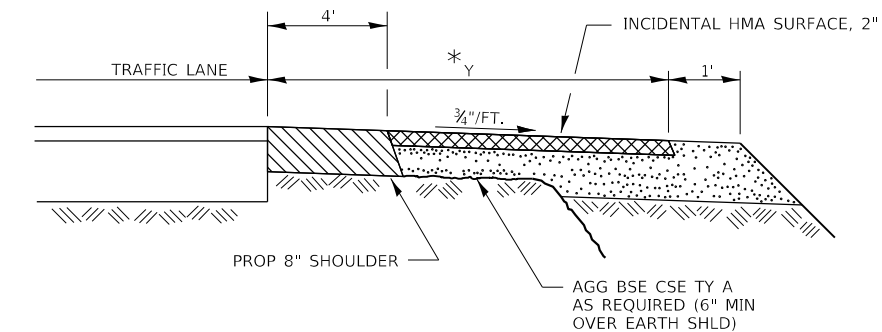
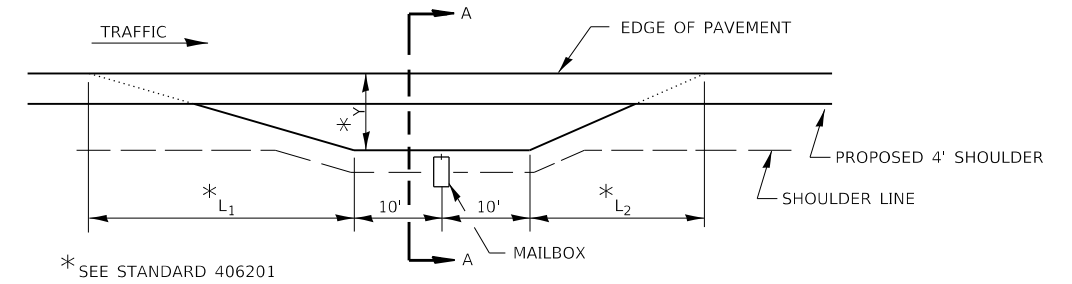
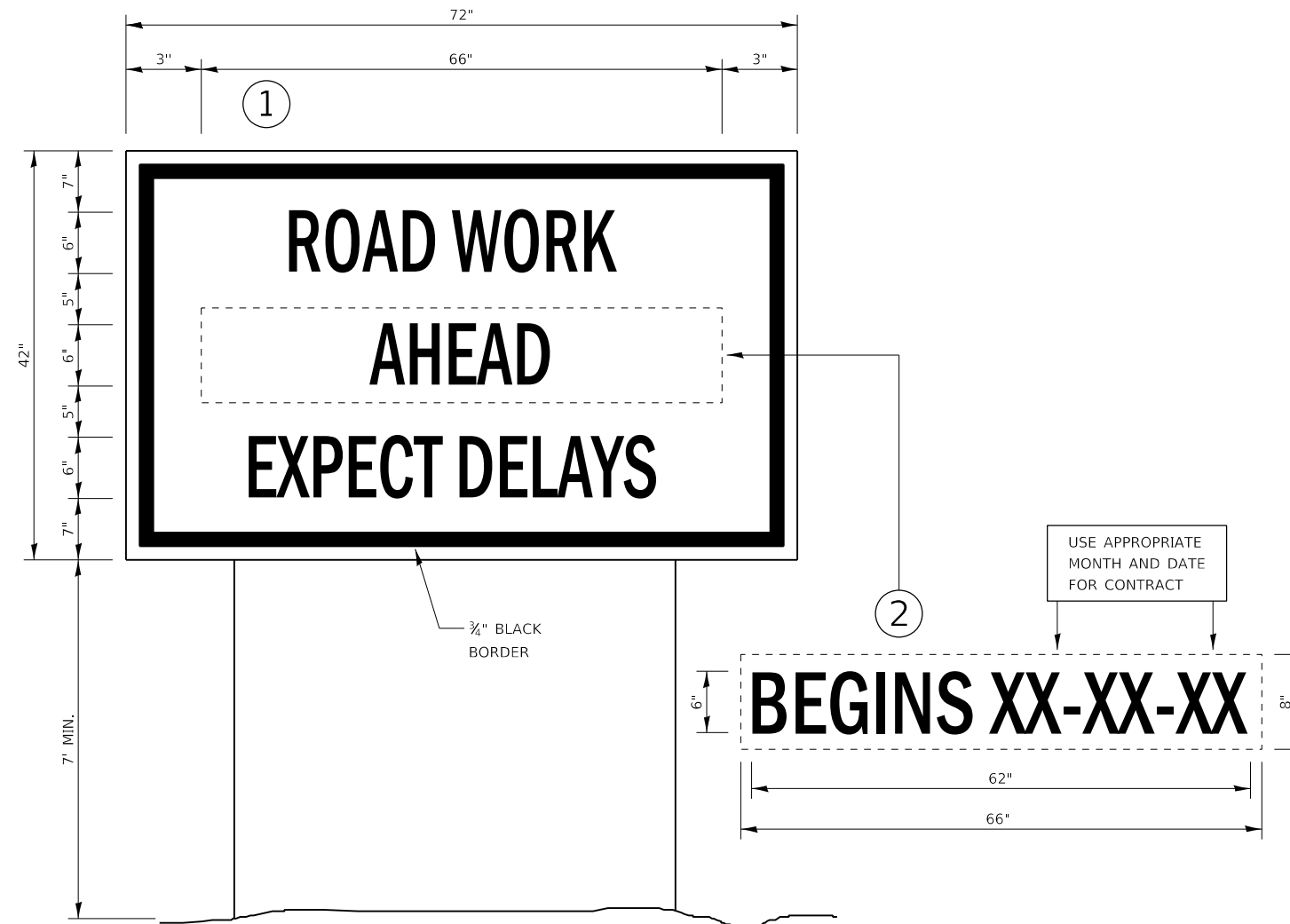
| SHOULDER REMOVAL & REPLACEMENT SCHEDULE | | | | | | | | | |
|---|----|--------|---------|--------------|----------------------------|------------------|--------------------|---------------------------|------------------------------|
| LOCATION | | | SIDE | LENGTH | SHOULDER REMOVAL (SPECIAL) | HMA SHOULDERS 8" | BIT MTLs TACK COAT | SHOULDER RUMBLE STRIPS 8" | *PAINT PVMT MARKING WHITE 4" |
| STA | TO | STA | LT / RT | FOOT | SQ YD | SQ YD | POUND | FOOT | FOOT |
| 0+40 | TO | 7+18 | LT & RT | 678 | 603 | 603 | 271 | 1356 | 2712 |
| SHLD OMISSION - PAINT ONLY | | | | | | | | | 1528 |
| 11+00 | TO | 70+10 | LT & RT | 5910 | 5253 | 5253 | 2364 | 11820 | 23640 |
| SHLD OMISSION - PAINT ONLY | | | | | | | | | 1580 |
| 74+05 | TO | 77+05 | LT & RT | 300 | 267 | 267 | 120 | 600 | 1200 |
| SHLD OMISSION - PAINT ONLY | | | | | | | | | 1040 |
| 79+65 | TO | 101+45 | LT & RT | 2180 | 1938 | 1938 | 872 | 4360 | 8720 |
| 101+45 | TO | 102+50 | LT | 105 | 47 | 47 | 11 | 105 | 420 |
| SHLD OMISSION - PAINT ONLY | | | | | | | | | 900 |
| 104+75 | TO | 133+54 | LT & RT | 2879 | 2559 | 2559 | 1152 | 5758 | 11516 |
| SHLD OMISSION - PAINT ONLY | | | | | | | | | 1808 |
| 138+06 | TO | 183+25 | LT & RT | 4519 | 4017 | 4017 | 1808 | 9038 | 18076 |
| 183+25 | TO | 184+20 | LT | 95 | 42 | 42 | 9 | 95 | 380 |
| SHLD OMISSION - PAINT ONLY | | | | | | | | | 1180 |
| 187+15 | TO | 188+05 | RT | 90 | 40 | 40 | 9 | 90 | 360 |
| 188+05 | TO | 274+85 | LT & RT | 8680 | 7716 | 7716 | 3472 | 17360 | 34720 |
| STATION EQUATION | | | | | | | | | |
| STA 274+85 BK = STA 275+00 AH | | | | | | | | | |
| 275+00 | TO | 282+50 | LT & RT | 750 | 667 | 667 | 300 | 1500 | 3000 |
| TOTAL | | | | 26186 | 23149 | 23149 | 10388 | 52082 | 112780 |

*QUANTITY REPRESENTS TWO SEPARATE APPLICATIONS

| MAILBOX TURNOUT REMOVAL & REPLACEMENT SCHEDULE | | | | | |
|--|---------------------|------------------------|--------------------|------------------|----------------------|
| STA / SIDE | HMA SURF REMOVAL 2" | INCIDENTAL HMA SURF 2" | BIT MTLs TACK COAT | EARTH EXCAVATION | AGG BASE COURSE TY A |
| | SQ YD | TON | POUND | CU YD | TON |
| 157+40 LT | - | 2.0 | 38 | 4 | 6 |
| 262+95 RT | 15.0 | 1.7 | 7 | - | - |
| 265+52 RT | 10.0 | 1.2 | 5 | - | - |
| TOTAL | 25 | 4.9 | 50 | 4 | 6 |

THE FIRST 4 FEET OF THE MBTO ADJACENT TO THE TRAVELED WAY IS PAID AS SHOULDER REMOVAL (SPECIAL) AND HMA SHOULDERS 8". THE REMAINING AREA OF THE MBTO IS PAID AS HMA SURFACE REMOVAL 2" AND INCIDENTAL HMA SURFACE 2".

| SURVEY MONUMENT SCHEDULE | | | | | |
|--|---|------------------------|------------------------|--------------------------------|----------------|
| GPS NUMBER | DESCRIPTION | EXISTING MONUMENT TYPE | PROPOSED MONUMENT TYPE | MONUMENT RECORD TO BE RECORDED | RESPONSIBILITY |
| N/A | NO PERMANENT SURVEY MARKERS OR SECTION CORNER MARKERS TO BE SET ON THIS JOB | N/A | N/A | N/A | N/A |
| THERE ARE NO RECORD LAND SURVEY OR CENTERLINE CONTROL MONUMENTS LOCATED WITHIN THE SHOULDER WIDENING AREA. UNKNOWN MONUMENTS SET BY SURVEYORS OR OTHER PERSONS COULD BE LOCATED ON THE EXISTING SHOULDER, AND IF FOUND THE R.E. MUST TIE ANY MONUMENT(S) SUBJECT TO DAMAGE OR DESTRUCTION DURING THE SHOULDER WIDENING, REQUEST PLATS AND PLANS PERSONNEL TO GPS THE MONUMENT(S), AND INFORM THEM TO RESET THE MONUMENT(S) UPON JOB COMPLETION. NO MONUMENT RECORDS WILL BE REQUIRED FOR THIS JOB. | | | | | |

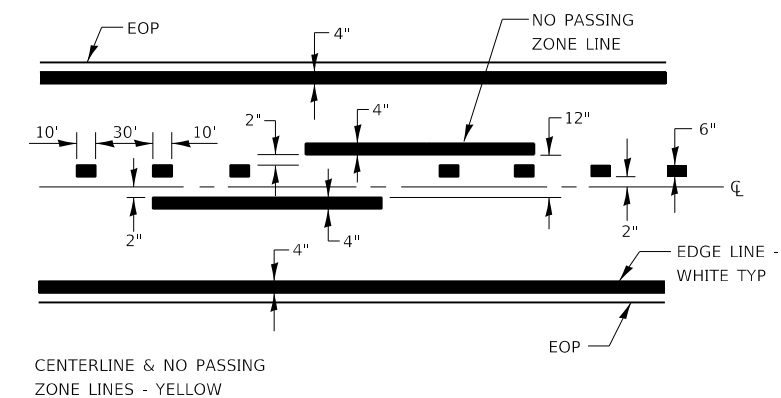


SECTION A-A
RURAL MAILBOX TURNOUT DETAILS

TEMPORARY INFORMATION SIGNING

NOTES:

1. USE 6" D BLACK LETTERING ON FLUORESCENT ORANGE BACKGROUND.
2. ERECT SIGNS AT LOCATIONS IN ADVANCE OF THE "ROAD CONSTRUCTION AHEAD" SIGNS AS DIRECTED BY THE ENGINEER.
3. ERECT SIGN ① WITH INSTALLED PANEL ② A MINIMUM OF ONE WEEK PRIOR TO THE START OF THE LANE CLOSURE.
4. REMOVE PANEL ② ON THAT DATE.
5. SEE SPECIAL PROVISION "TEMPORARY INFORMATION SIGNING" FOR ADDITIONAL INFORMATION.
6. WILL BE PAID FOR PER SQ FT AS "TEMPORARY INFORMATION SIGNING". EACH SIGN = 21 SQ FT AND THE DATE PANEL ② WILL NOT BE MEASURED SEPARATELY FOR PAYMENT.



PAVEMENT MARKING

| | | | | | | | | | | | |
|---|------------------------------|------------|-----------|---|----------------|--------------------|-----------------------------|--------------------------|---------------------------|-----------|--|
| FILE NAME = | USER NAME = budzynsklm | DESIGNED - | REVISED - | STATE OF ILLINOIS DEPARTMENT OF TRANSPORTATION | DETAILS | F.A.P. RTE. | SECTION | COUNTY | TOTAL SHEETS | SHEET NO. | |
| pw:\il084EBIDINTEG\ilnotes.gov\PWIDOT\Documents\DOT\Office\District 3\Projects\D366J11\CADDData\D366J11-sh-cw | DRAWN - | CHECKED - | REVISED - | | | 840 | (123) SFY | IROQUOIS | 8 | 8 | |
| Default | PLOT SCALE = 100.0000' / in. | DATE - | REVISED - | | | CONTRACT NO. 66J11 | | | | | |
| | PLOT DATE = 12/7/2018 | DATE - | REVISED - | | | SCALE: _____ | SHEET _____ OF _____ SHEETS | STA. _____ TO STA. _____ | ILLINOIS FED. AID PROJECT | | |