

075

03-08-2019 LETTING ITEM 075

STATE OF ILLINOIS
DEPARTMENT OF TRANSPORTATION

F.A. RTE	SECTION	COUNTY	TOTAL SHEETS	SHEET NO.
125,126,126R	JOINT REPAIR	MACON	6	1
ILLINOIS CONTRACT NO. 74866				

FAS 1536 & FAU 7464

D-97-053-18

**PROPOSED
HIGHWAY PLANS**

FAS 1536, FAU 7464 (IL 48)
SECTION (125,126,126R) JOINT REPAIR
PROJECT STP-RC7A(030)
MICROSURFACING JOINT REPAIR
MACON COUNTY

C-97-100-18

FOR INDEX OF SHEETS, SEE SHEET NO. 2

ADT = 3,700

PROJECT OMISSIONS

STA. 359+00 TO STA. 360+00

STA. 790+50 TO STA. 801+23

BRIDGE OMISSIONS

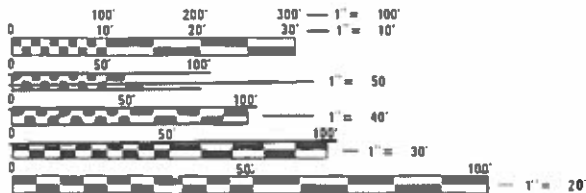
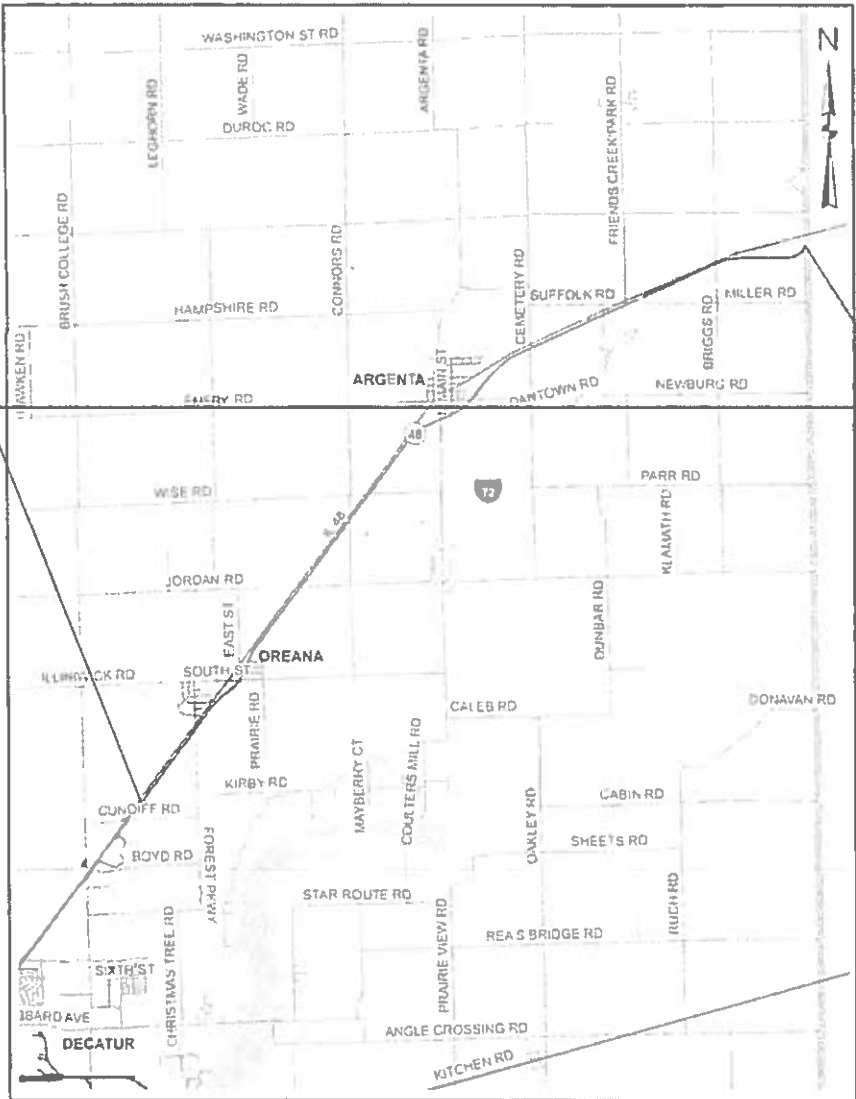
STA. 595+69 TO STA. 635+55



LOCATION OF SECTION INDICATED THIS: -

PROJECT BEGINS
STATION 258 + 57

PROJECT ENDS
STATION 801 + 23



FULL SIZE PLANS HAVE BEEN PREPARED USING STANDARD ENGINEERING SCALES. REDUCED SIZED PLANS WILL NOT CONFORM TO STANDARD SCALES. IN MAKING MEASUREMENTS ON REDUCED PLANS, THE ABOVE SCALES MAY BE USED.

J.U.L.I.E.
JOINT UTILITY LOCATION INFORMATION FOR EXCAVATION
1-800-892-0123
OR 811

PROJECT ENGINEER: BRIAN LEWIS
PROJECT MANAGER: TRAVIS WALK

CONTRACT NO. 74866

GROSS LENGTH = 54,266 FT. = 10.28 MILE
NET LENGTH = 49,207 FT. = 9.32 MILE

STATE OF ILLINOIS
DEPARTMENT OF TRANSPORTATION

SUBMITTED DECEMBER 12 20 18
Jeffrey M. Smith REGIONAL ENGINEER

Feb 19 20 19
Paul P. Chy ENGINEER OF DESIGN AND ENVIRONMENT

Feb 20 19 20
Paul P. Chy DIRECTOR OF HIGHWAYS PROJECT IMPLEMENTATION

PRINTED BY THE AUTHORITY
OF THE STATE OF ILLINOIS

INDEX OF SHEETS

SHEET NO.	ITEM
1	COVER SHEET
2	INDEX OF SHEETS, GENERAL NOTES
3	SUMMARY OF QUANTITIES
4	SCHEDULE OF QUANTITIES
5-6	ALIGNMENT TIES & PERMANENT SURVEY MARKERS

THE FOLLOWING STANDARDS ARE A PART OF THESE PLANS AND ARE INCLUDED AFTER SHEET NO. 6 :

STD. NO.	DESCRIPTION
000001-07	STANDARD SYMBOLS, ABBREVIATIONS, AND PATTERNS
001006	DECIMAL OF AN INCH AND OF A FOOT
667101-02	PERMANENT SURVEY MARKERS
701301-04	LANE CLOSURE, 2L, 2W, SHORT TIME OPERATIONS
701306-04	LANE CLOSURE, 2L, 2W, SLOW MOVING OPERATIONS DAY ONLY, FOR SPEEDS >= 45 MPH
701311-03	LANE CLOSURE, 2L, 2W, MOVING OPERATIONS - DAY ONLY
701901-08	TRAFFIC CONTROL DEVICES
780001-05	TYPICAL PAVEMENT MARKINGS
781001-04	TYPICAL APPLICATIONS RAISED REFLECTIVE PAVEMENT MARKERS

GENERAL NOTES

THE PROPOSED WORK IS LOCATED ON IL ROUTE 48 IN MACON COUNTY FROM I-72 EXIT 144 RAMPS TO PIATT COUNTY LINE ROAD.

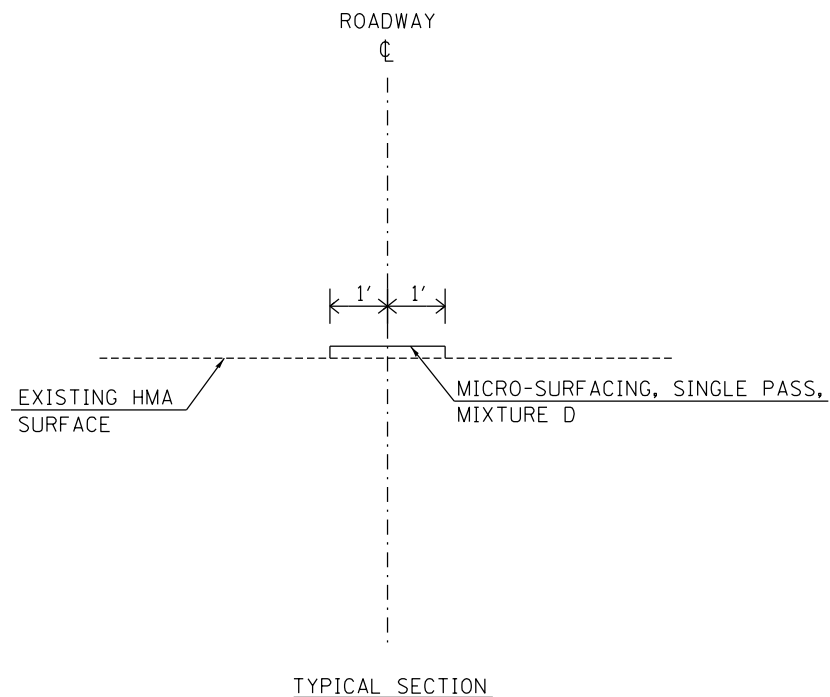
THE WORK IN THIS SECTION CONSISTS OF RAISED REFLECTIVE PAVEMENT MARKER REMOVAL, MICRO-SURFACING, PAVEMENT MARKING, RAISED REFLECTIVE PAVEMENT MARKERS, TRAFFIC CONTROL, AND ANY OTHER WORK NECESSARY TO COMPLETE THIS SECTION PER THE STANDARD SPECIFICATIONS.

THERE WILL BE NO CRACK/JOINT SEALING, BUMP REMOVAL, PAVEMENT MARKING REMOVAL, OR SCRATCH COAT FILLING ON THIS PROJECT.

THE TOTAL QUANTITY OF PAINT PAVEMENT MARKING-LINE 4" IS ALL YELLOW. EDGE LINES WILL NOT BE PAINTED.

THE TOTAL QUANTITY OF RAISED REFLECTIVE PAVEMENT MARKERS ARE ALL TWO-WAY AMBER REFLECTORS.

ALL SHORT-TERM PAVEMENT MARKING SHALL BE TAPE. THE TAPE SHALL BE PLACED BEYOND THE LIMITS OF THE MICRO-SURFACING ALTERNATING ON EITHER SIDE OF THE ROADWAY CENTERLINE.



*FAS 1536, FAU 7464

**STATE OF ILLINOIS
DEPARTMENT OF TRANSPORTATION**

**INDEX OF SHEETS AND
GENERAL NOTES**

SCALE: N/A SHEET 1 OF 1 SHEETS STA. TO STA.

F.A.* RTE.	SECTION	COUNTY	TOTAL SHEETS	SHEET NO.
*	(125,126,126R) JOINT REPAIR	MACON	6	2
			CONTRACT NO. 74866	
		ILLINOIS	FED. AID PROJECT	

80% FED
20% STATE

SUMMARY OF QUANTITIES			TOTAL QUANTITIES	CONSTRUCTION TYPE CODE		
CODE NO	ITEM	UNIT		0005 URBAN	0005 RURAL	
40400121	MICRO-SURFACING, SINGLE PASS, MIXTURE D	SO YD	10915	3244	7671	
40600290	BITUMINOUS MATERIALS (TACK COAT)	POUND	2456	730	1726	
67100100	MOBILIZATION	L SUM	1	0.30	0.70	
70100460	TRAFFIC CONTROL AND PROTECTION, STANDARD	L SUM	1	0.30	0.70	
	701306					
70107025	CHANGEABLE MESSAGE SIGN	CAL DA	28	14	14	
70300100	SHORT TERM PAVEMENT MARKING	FOOT	4911	1459	3452	
70300150	SHORT TERM PAVEMENT MARKING REMOVAL	SO FT	1638	487	1151	
* 78001110	PAINT PAVEMENT MARKING - LINE 4"	FOOT	12278	3649	8629	
* 78100100	RAISED REFLECTIVE PAVEMENT MARKER	EACH	615	183	432	
78300200	RAISED REFLECTIVE PAVEMENT MARKER REMOVAL	EACH	615	183	432	
Z0049799	PROTECTING OR RESETTING SURVEY MARKERS	EACH	13	4	9	

* SPECIALTY ITEM

MODEL: Default
 FILE NAME: P:\1108\BIDDING\ITEC\Illinois\gov\PIV\DOT\Documents\DOT_Offices\Director\7\Projects\74866\CADDData\CAD\Sheet\74866-PI-500.dgn

USER NAME = steffenmk	DESIGNED -	REVISED -
	DRAWN -	REVISED -
PLOT SCALE = 100.0000' / in.	CHECKED -	REVISED -
PLOT DATE = 12/12/2018	DATE -	REVISED -

**STATE OF ILLINOIS
DEPARTMENT OF TRANSPORTATION**

SUMMARY OF QUANTITIES

SCALE: N/A SHEET 1 OF 1 SHEETS STA. TO STA.

FAS 1536, FAU 7464

REV. - MS

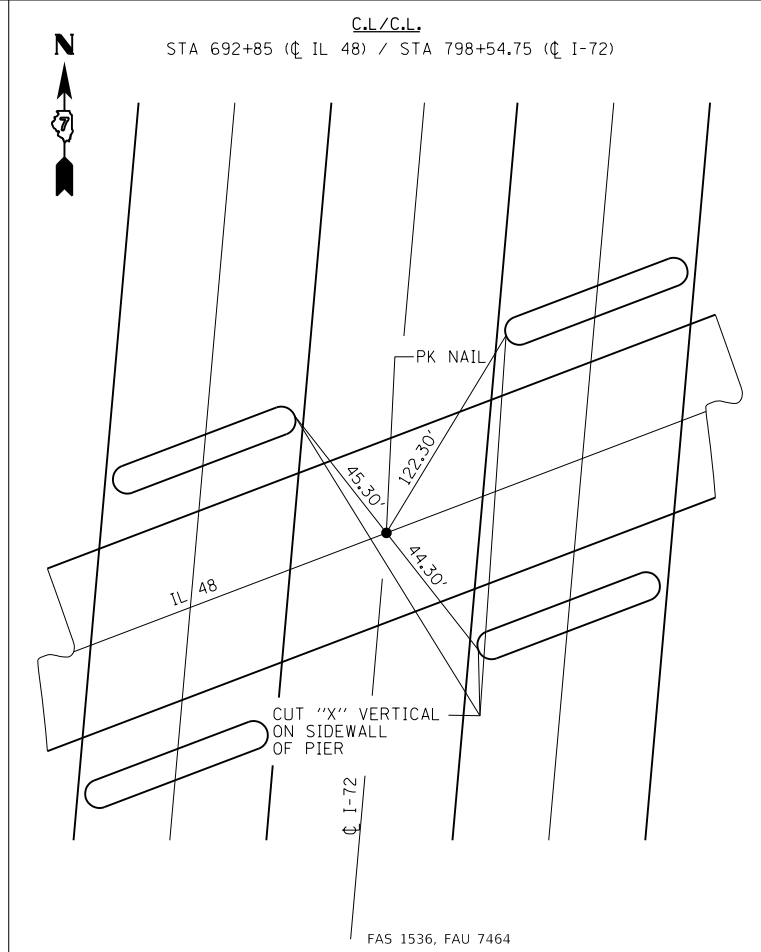
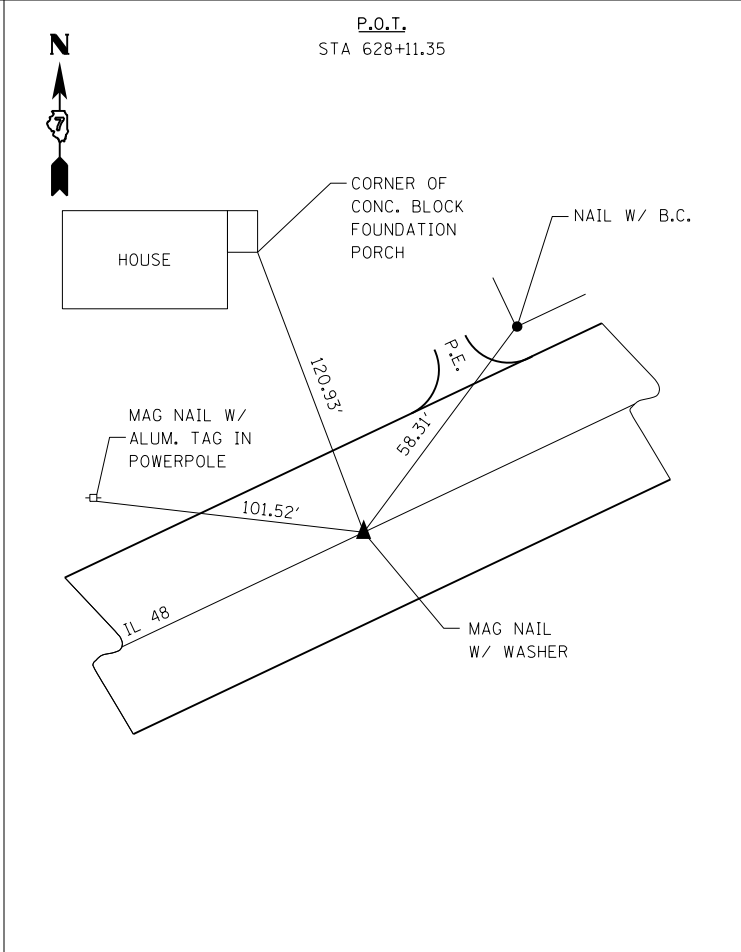
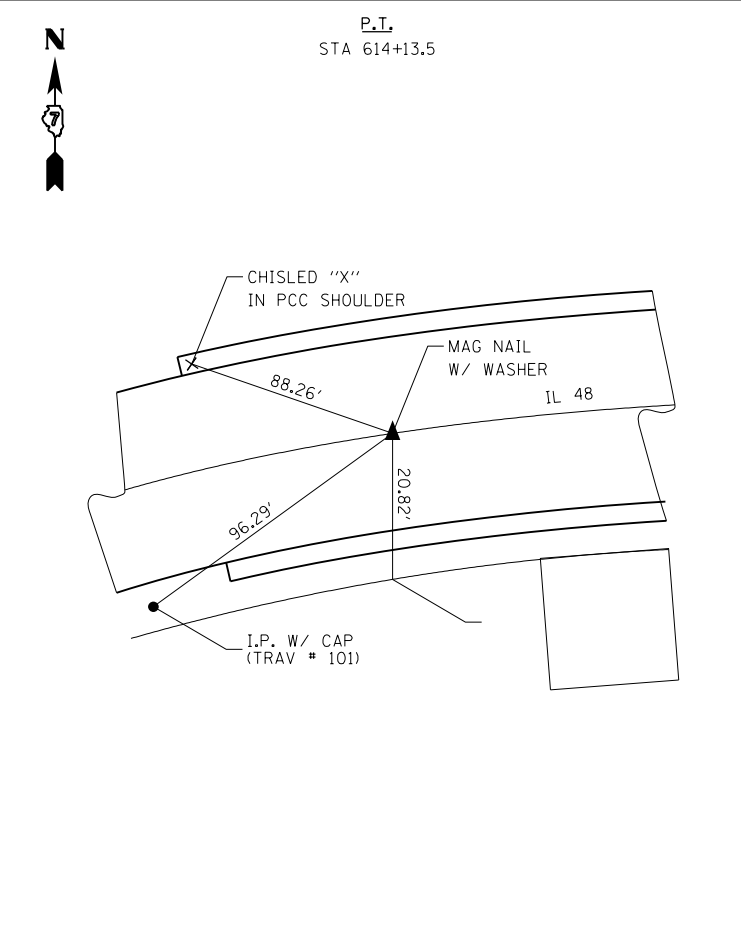
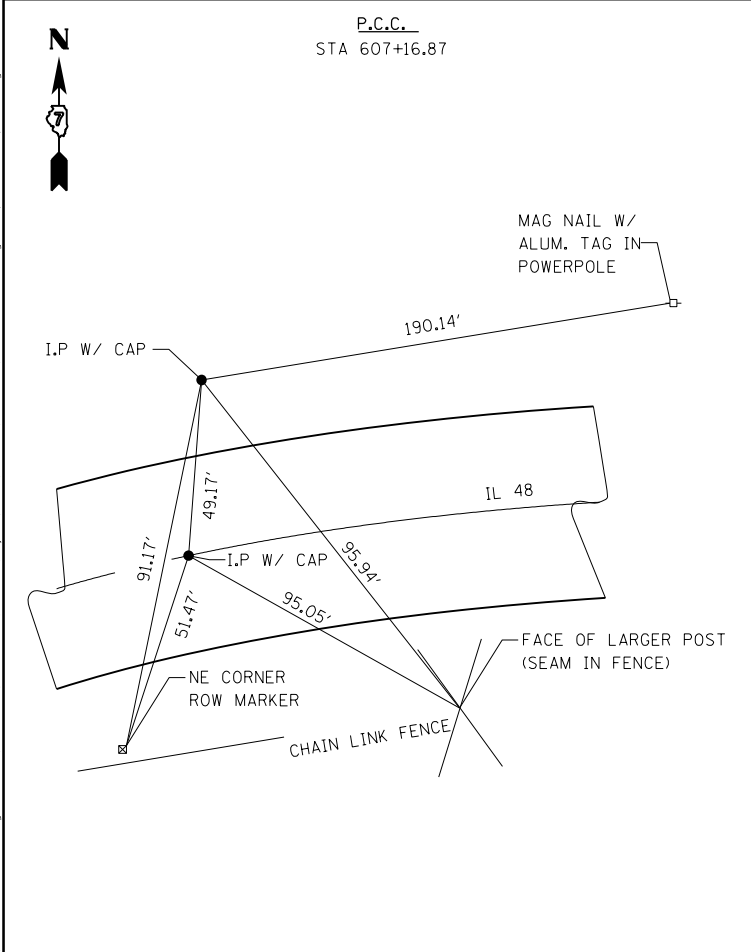
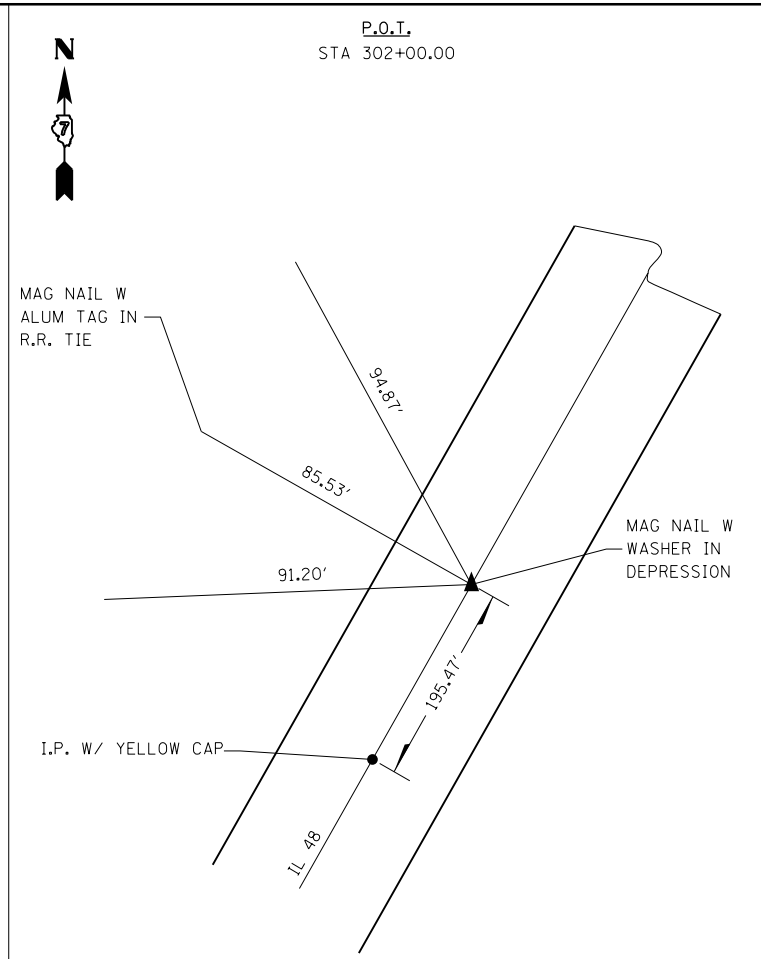
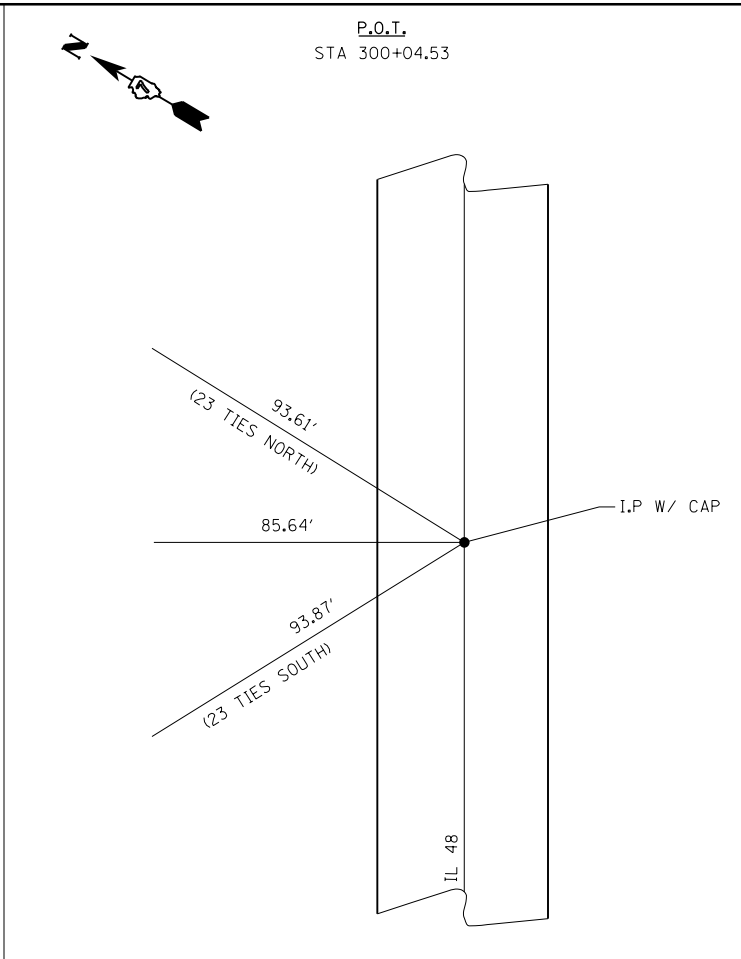
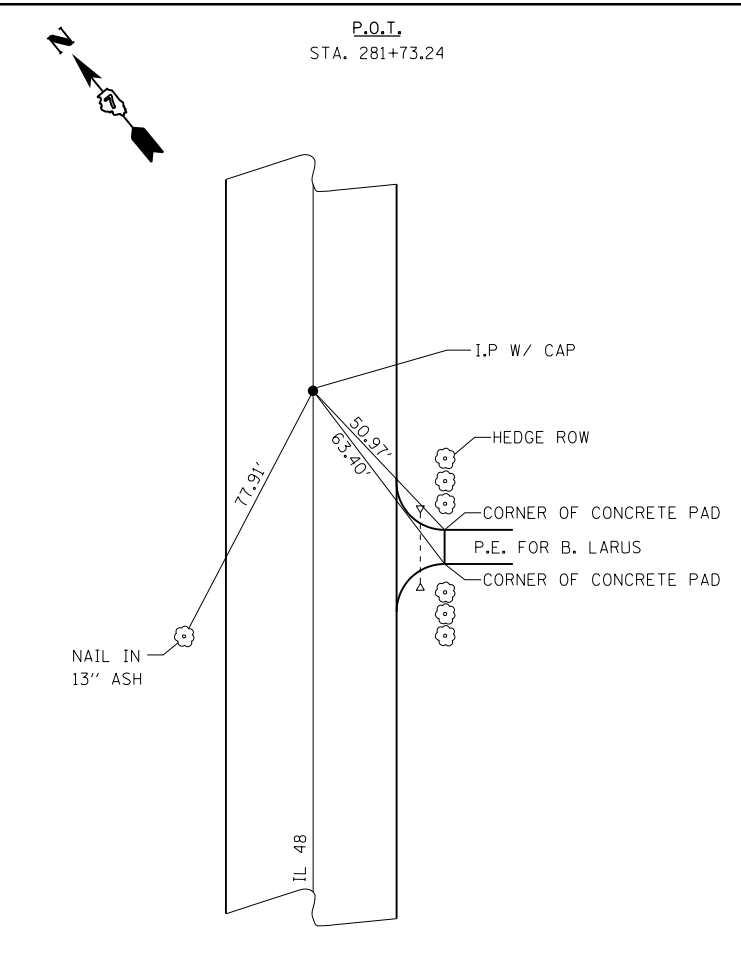
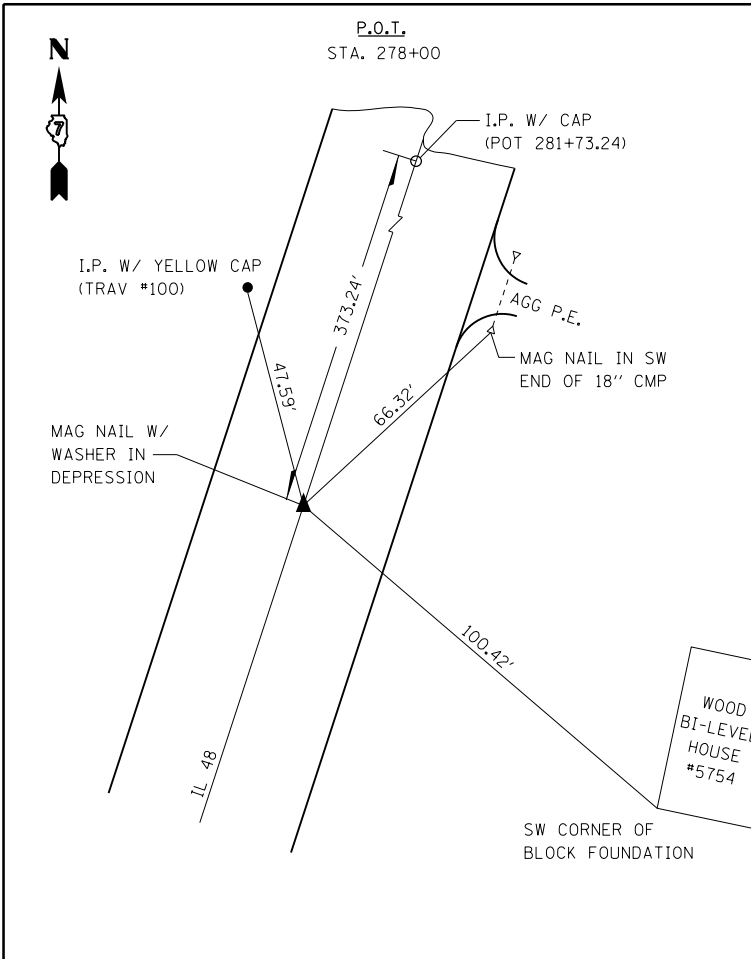
F.A.* RTE.	SECTION	COUNTY	TOTAL SHEETS	SHEET NO.
*	(125,126,126R) JOINT REPAIR	MACON	6	3
			CONTRACT NO. 74866	
		ILLINOIS	FED. AID PROJECT	

DESCRIPTION	STATION	TO	STATION	LENGTH	MICRO-SURFACING, SINGLE PASS, MIXTURE D	BITUMINOUS MATERIALS (TACK COAT)	SHORT TERM PAVEMENT MARKING	SHORT TERM PAVEMENT MARKING REMOVAL	PAINT PAVEMENT MARKING - LINE 4"	RAISED REFLECTIVE PAVEMENT MARKER	RAISED REFLECTIVE PAVEMENT MARKER REMOVAL
					SQ YD	POUND	FOOT	SQ YD	FOOT	EACH	EACH
URBAN											
	258+57.00	TO	359+00.00	10043	2232	502	1004	335	2511	126	126
CROSS WALK OMISSION	359+00.00	TO	360+00.00	-	-	-	-	-	-	-	-
	360+00.00	TO	405+50.00	4550	1012	228	455	152	1138	57	57
URBAN TOTALS					3244	730	1459	487	3649	183	183
RURAL											
	405+50.00	TO	595+69.00	19019	4227	951	1902	634	4755	238	238
BRIDGE OMISSION	595+69.00	TO	635+55.00	-	-	-	-	-	-	-	-
	635+55.00	TO	790+50.00	15495	3444	775	1550	517	3874	194	194
OMISSION	790+50.00	TO	801+23.00	-	-	-	-	-	-	-	-
RURAL TOTALS					7671	1726	3452	1151	8629	432	432
OVERALL TOTALS					10915	2456	4911	1638	12278	615	615

MODEL: Default
 FILE: \\nas101.psu.edu\B&E\BID\NTEC\Illinois\gov\PIV\DOT\Documents\DOT_Offices\Director\7\Projects\74866\CADD\Drawings\CAD\Drawings\74866-Plc\Schedule.dgn

FAS 1536, FAU 7464

USER NAME = steffenmk	DESIGNED -	REVISED -	STATE OF ILLINOIS DEPARTMENT OF TRANSPORTATION	PROJECT SCHEDULE				F.A.* RTE.	SECTION	COUNTY	TOTAL SHEETS	SHEET NO.
PLOT SCALE = 100.0000 ' / in.	DRAWN -	REVISED -						*	(125,126,126R) JOINT REPAIR	MACON	6	4
PLOT DATE = 12/12/2018	CHECKED -	REVISED -		SCALE: N/A	SHEET 1	OF 1 SHEETS	STA.	TO STA.	CONTRACT NO. 74866			
	DATE -	REVISED -		ILLINOIS FED. AID PROJECT								



MODEL: Default
 FILE NAME: P:\IL\B&E\BIDDING\ITC\Illinois.gov\RW\DOT\Documents\DOT Office\Drawings\7\Projects\74866\CADD\Drawings\74866-PLC-ABT-Alignment, Benchmarks, & Ties.dgn

USER NAME = steffemk	DESIGNED -	REVISED -
PLOT SCALE = 100.0000' / in.	DRAWN -	REVISED -
PLOT DATE = 12/12/2018	CHECKED -	REVISED -
	DATE -	REVISED -

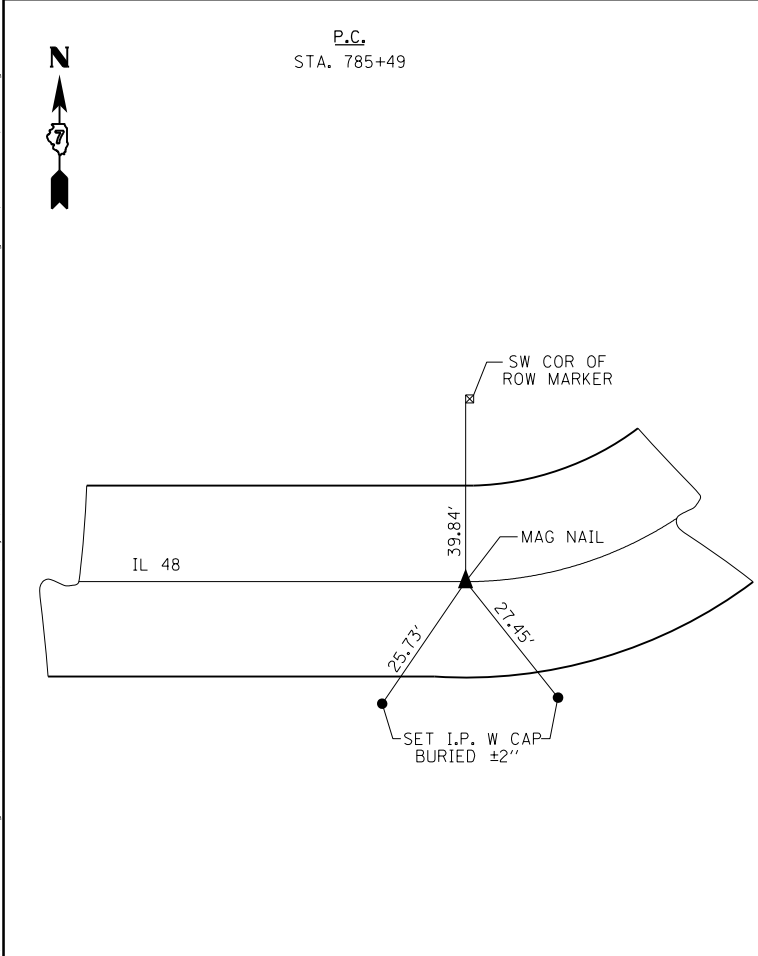
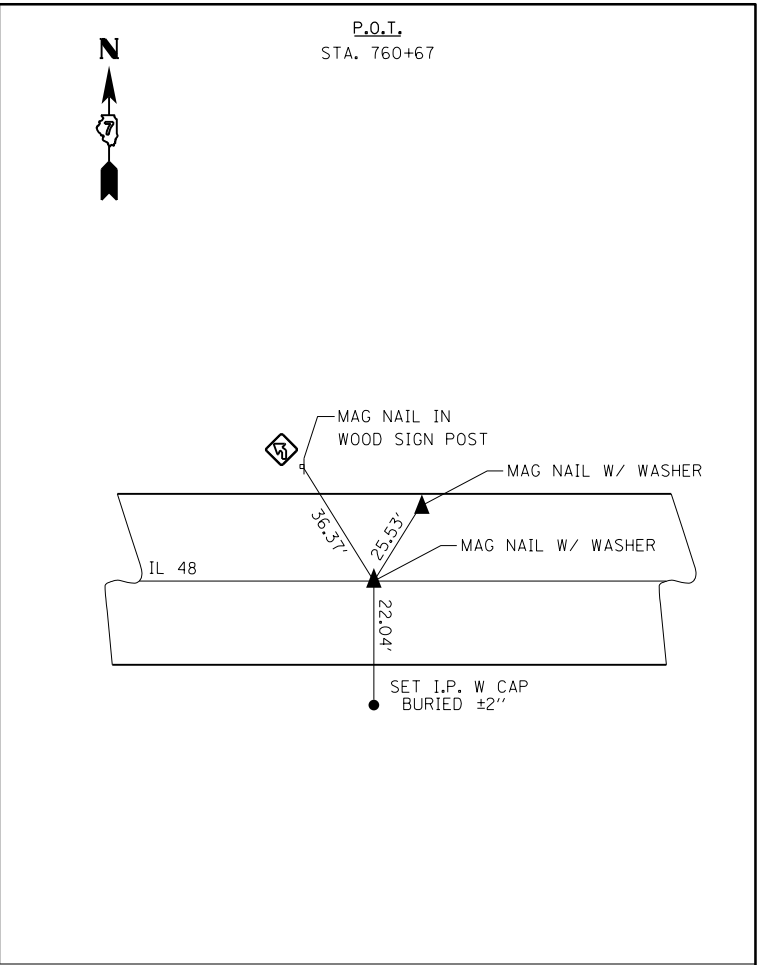
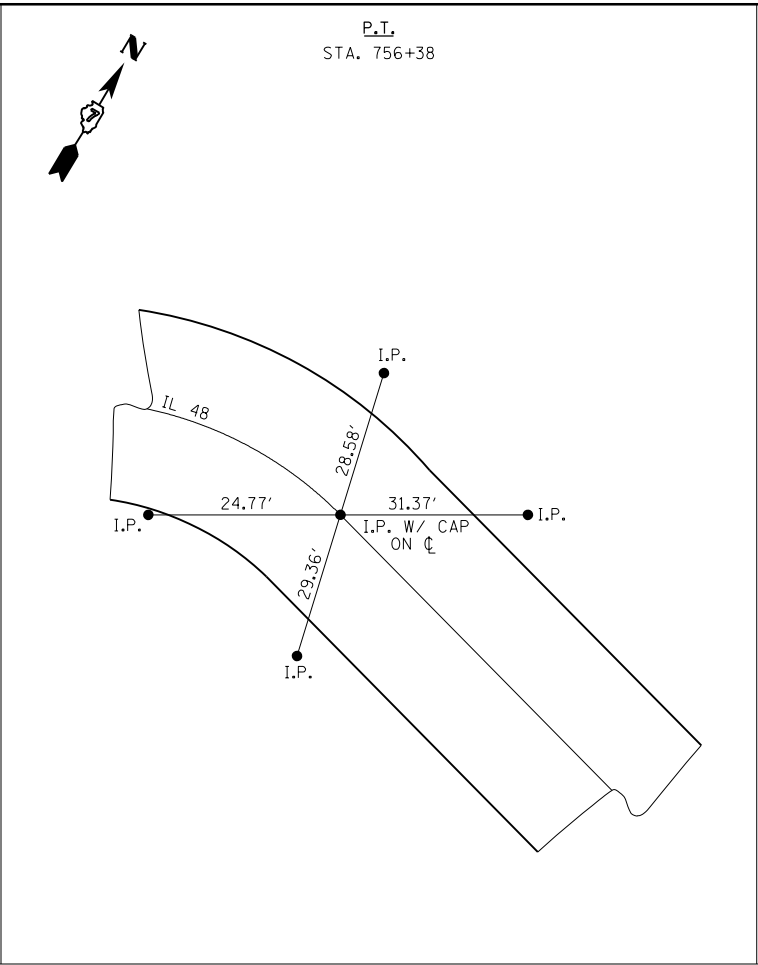
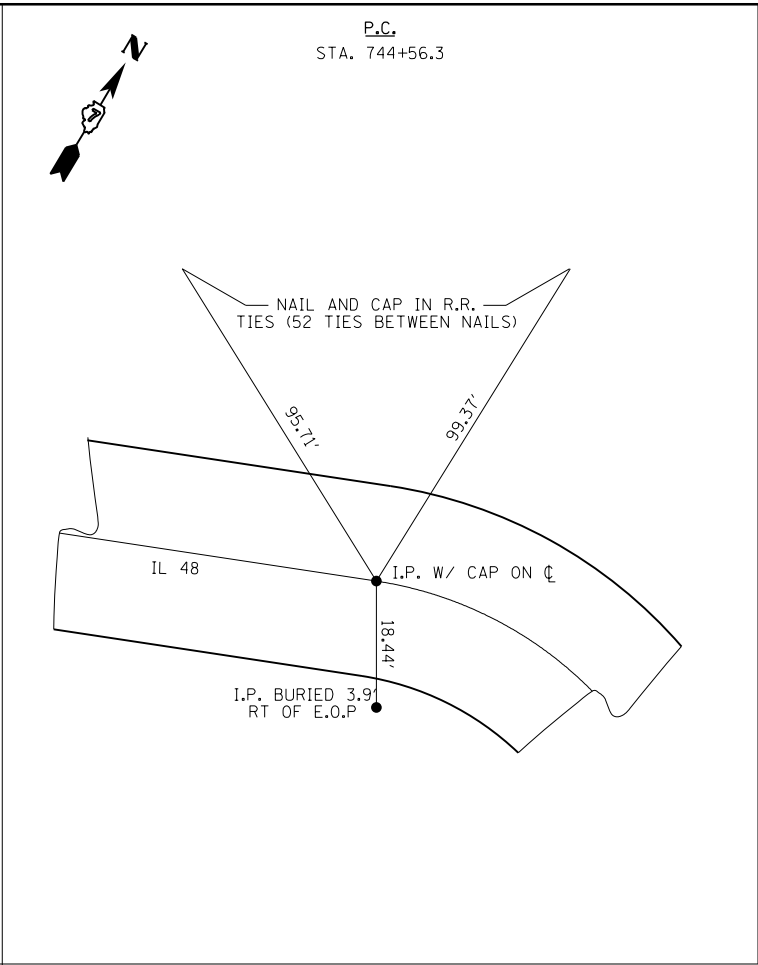
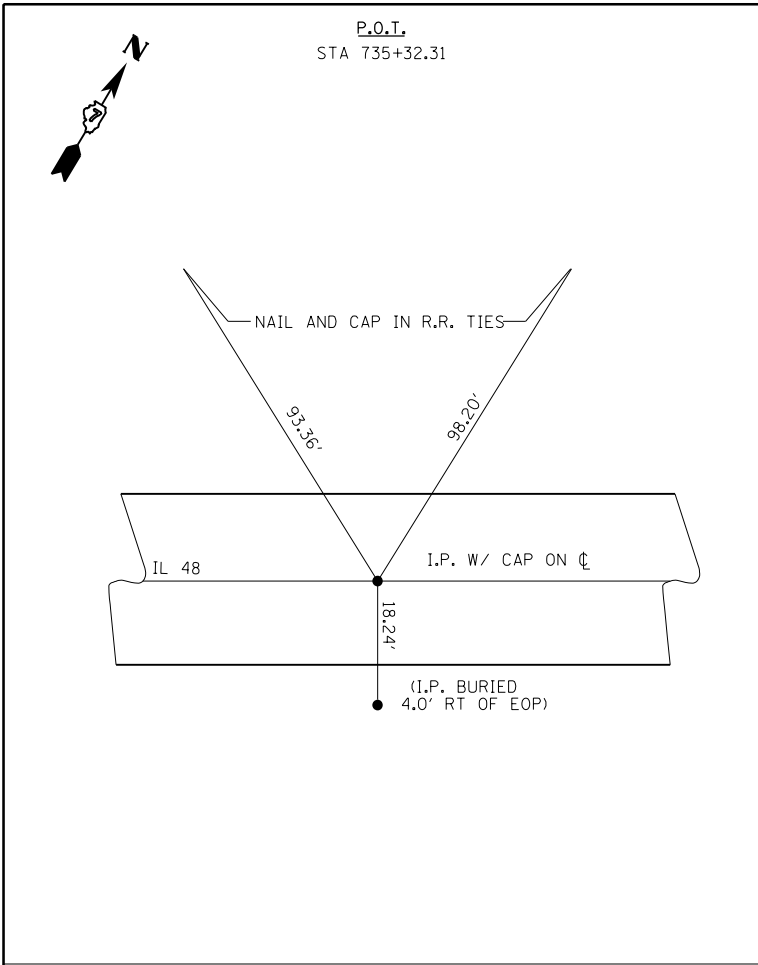
**STATE OF ILLINOIS
DEPARTMENT OF TRANSPORTATION**

**ALIGNMENT TIES & PERMANENT
SURVEY MARKERS**

SCALE: N/A SHEET 1 OF 2 SHEETS STA. TO STA.

F.A.* RTE.	SECTION	COUNTY	TOTAL SHEETS	SHEET NO.
-	(125,126,126R) JOINT REPAIR	MACON	6	5
CONTRACT NO. 74866				
ILLINOIS FED. AID PROJECT				

MODEL: Default
 FILE NAME: P:\1108\B&E\BIDD\ITEC\Illinois\pwr\WIDOT\Documents\BIDD\Office\BIDD\74866\pwr\B&E\Alignment, Benchmarks, & Ties.dgn
 PROJECT: 74866\CADD\BIDD\74866\pwr\B&E\Alignment, Benchmarks, & Ties.dgn



PROTECTING OR RESETTING SURVEY MARKERS

LOCATION STATION	OFFSET (FOOT)	DESCRIPTION	EACH
278+00.00	0	MAG NAIL W/ WASHER	1
281+73.24	0	I.P. W/ YELLOW CAP - FLUSH	1
300+04.53	0	I.P. W/ YELLOW CAP - FLUSH	1
302+00.00	0	MAG NAIL W/ WASHER	1
607+16.87	2.3' LT	I.P. W/ YELLOW CAP - FLUSH	1
614+13.50	0	MAG NAIL W/ WASHER - FLUSH	1
628+11.35	0	MAG NAIL W/ WASHER - FLUSH	1
692+85.00	0	P.K. NAIL	1
735+38.00	0	I.P. W/ YELLOW CAP - FLUSH	1
744+61.00	1.0' LT	I.P. W/ YELLOW CAP - FLUSH	1
756+38.00	0	I.P. W/ YELLOW CAP - FLUSH	1
760+67.00	0	MAG NAIL - FLUSH	1
785+49.00	0	MAG NAIL - FLUSH	1
		TOTAL	13

FAS 1536, FAU 7464

USER NAME = steffenmk	DESIGNED -	REVISED -
	DRAWN -	REVISED -
PLOT SCALE = 100.0000' / in.	CHECKED -	REVISED -
PLOT DATE = 12/12/2018	DATE -	REVISED -

STATE OF ILLINOIS
DEPARTMENT OF TRANSPORTATION

ALIGNMENT TIES & PERMANENT
SURVEY MARKERS

SCALE: N/A SHEET 2 OF 2 SHEETS STA. TO STA.

F.A.* RTE.	SECTION	COUNTY	TOTAL SHEETS	SHEET NO.
*	(125,126,126R) JOINT REPAIR	MACON	6	6
			CONTRACT NO. 74866	
		ILLINOIS FED. AID PROJECT		