

GENERAL NOTES

All structural steel shall conform to AASHTO Classification M-270 Gr. 36, unless otherwise noted.

Plan dimensions and details relative to existing plans are subject to nominal construction variations. The Contractor shall field verify existing dimensions and details affecting new construction and make necessary approved adjustments prior to construction or ordering of materials. Such variations shall not be cause for additional compensation for a change in scope of the work, however, the Contractor will be paid for the quantity actually furnished at the unit price bid for the work.

Reinforcement bars designated (E) shall be epoxy coated.

Prior to pouring the new concrete deck, all heavy or loose rust, loose mill scale, and other loose or potentially detrimental foreign material shall be removed from the surfaces in contact with concrete. Tightly adhered paint may remain unless otherwise noted. Removal shall be accomplished by methods that will not damage the steel and the cost will be included in the pay item covering removal of the existing concrete.

Existing reinforcement bars extending into the removal area shall be cleaned, straightened and incorporated into the new construction. Any reinforcement bars that are damaged during concrete removal shall be replaced with an approved bar splicer or anchorage system. Cost included with Concrete Removal.

Joint openings shall be adjusted according to Article 520.04 of the Std. Specs. when the deck is poured at an ambient temperature other than 50° F.

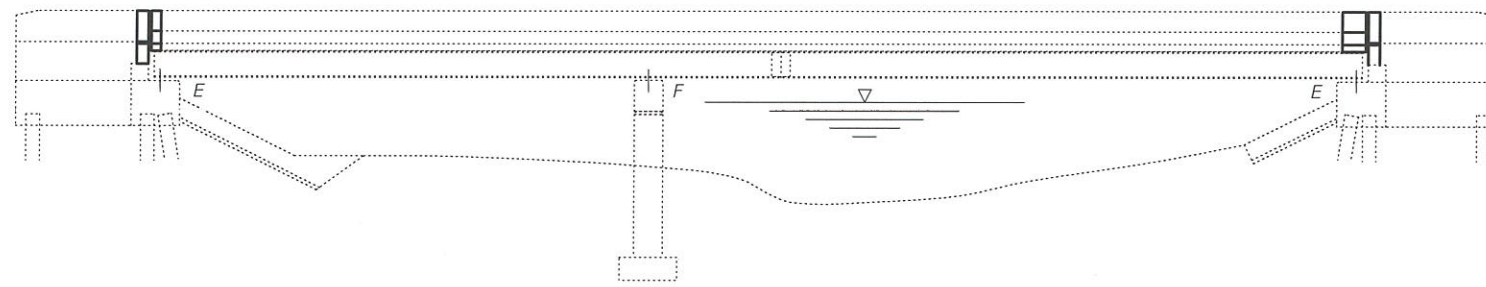
Existing structural steel that will be in contact with new structural steel shall be cleaned and painted prior to erection as required by the special provision "Cleaning and Painting Contact Surface Areas of Existing Steel Structures".

Cleaning and painting of the existing structural steel shall be as specified in the special provision for "Cleaning and Painting Existing Steel Structures". Areas to be painted shall consist of all beam ends, end diaphragms, and steel components of bearings at the abutments. Beam end painting shall extend 5' from the ends of the beams longitudinally. All areas to be painted shall be cleaned per near white blast cleaning per SSPC 10. All existing steel cleaned shall be painted according to the requirements of paint system 1 - 0Z/E/U. The color of the final finish coat shall be Reddish Brown (Munsell 2.5YR 3/4). The use of air monitors will be required.

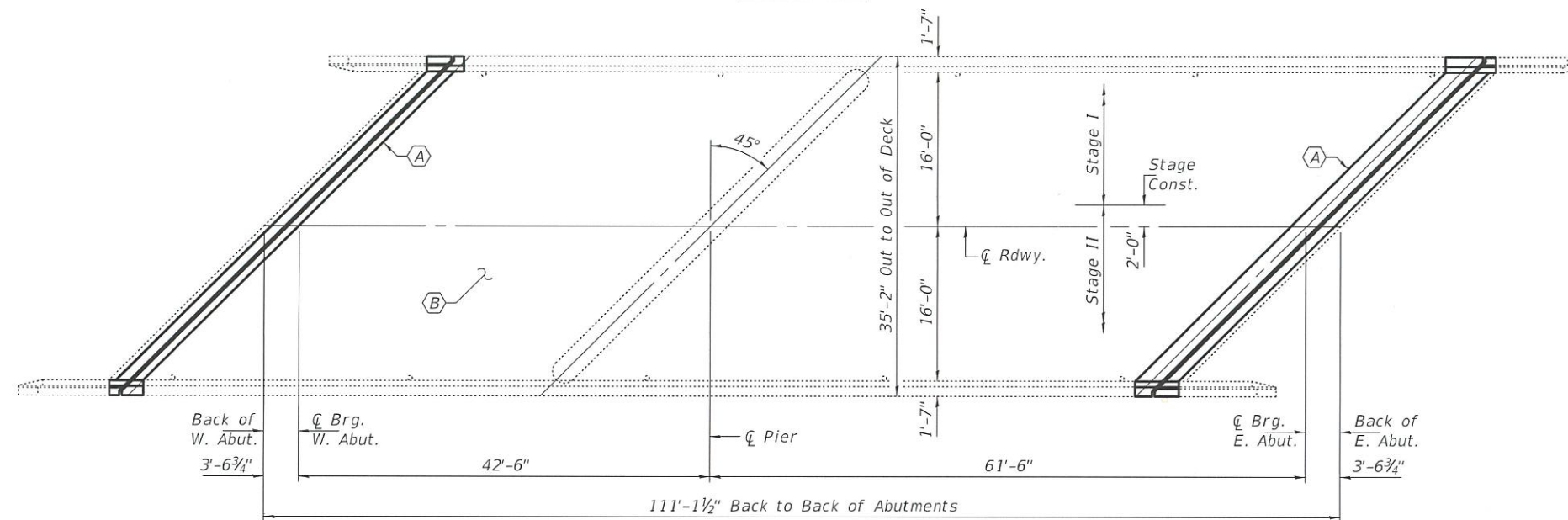
A minimum of two air monitors will be required to monitor abrasive blasting operations. The SSPC-QP1 and SSPC-QP2 painting contractor certifications will be required.

Care shall be taken not to damage rubber bearing or joint components during blasting and cleaning operations. Any damage to these components shall be repaired at the contractor's expense.

Synthetic fibers shall be added to the Bridge Deck Latex Concrete Overlay. See Special Provisions.

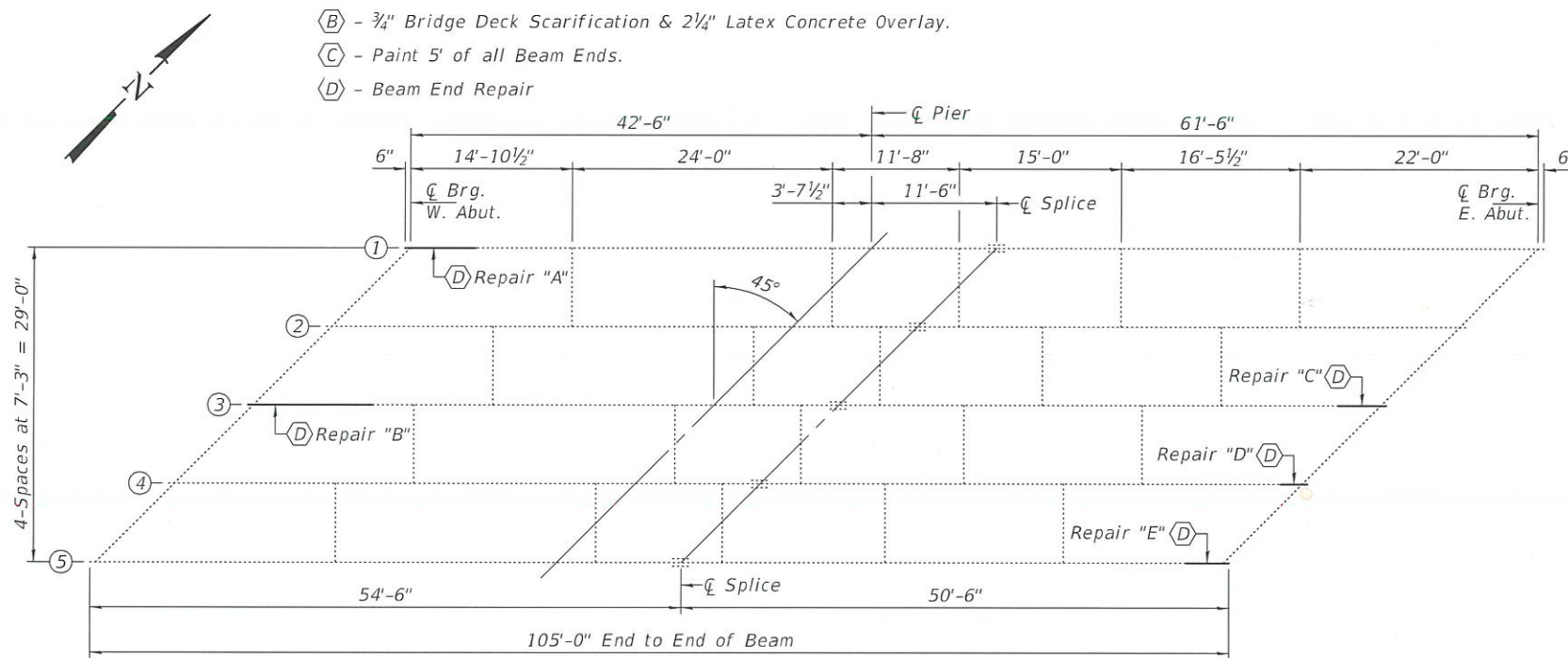


ELEVATION



PLAN

- (A) - Remove Exp. Jt. and install new Preformed Strip Seal Joint.
- (B) - 3/4" Bridge Deck Scarification & 2 1/4" Latex Concrete Overlay.
- (C) - Paint 5' of all Beam Ends.
- (D) - Beam End Repair



FRAMING PLAN

TOTAL BILL OF MATERIAL

ITEM	UNIT	QUANTITY
Concrete Removal	Cu. Yd.	9.6
Concrete Superstructure	Cu. Yd.	10.7
Reinforcement Bars, Epoxy Coated	Pound	1100
Bar Splicers	Each	16
Bridge Deck Scarification, 3/4"	Sq. Yd.	363.0
Bridge Deck Latex Concrete Overlay, 2 1/4"	Sq. Yd.	363.0
Bridge Deck Grooving	Sq. Yd.	356.3
Preformed Joint Strip Seal	Foot	95
Protective Coat	Sq. Yd.	399.9
Structural Steel Repair	Pound	2320
Containment and Disposal of Lead Paint	L.S.	1
Cleaning Residues	L.S.	1
Cleaning and Painting Steel Bridge	L.S.	1

* New concrete and concrete overlay surfaces only.



Expires: November 30, 2020

DESIGNED - <i>CDK</i>	EXAMINED - <i>Timothy A. Doherty</i>	DATE - JANUARY 29, 2019	STATE OF ILLINOIS DEPARTMENT OF TRANSPORTATION	GENERAL PLAN & ELEVATION ILLINOIS ROUTE 78 OVER HAMMOND BRANCH CREEK SN 043-0039	F.A. R.T.E.	SECTION	COUNTY	TOTAL SHEETS	SHEET NO.	
CHECKED - <i>Steffen</i>	PASSED - <i>Steffen</i>	REVISD -			642	D2 BDR 2019-3	JO DAVIESS	30	14	
DRAWN - STEFFEN	REVISD -	REVISD -			CONTRACT NO. 64N27					
CHECKED - <i>CDK JOV</i>	ENGINEER OF BRIDGES AND STRUCTURES				SHEET 1 OF 10 SHEETS					