

03-08-2019 LETTING ITEM 139

STATE OF ILLINOIS
DEPARTMENT OF TRANSPORTATION
DIVISION OF HIGHWAYS

**PROPOSED
HIGHWAY PLANS**

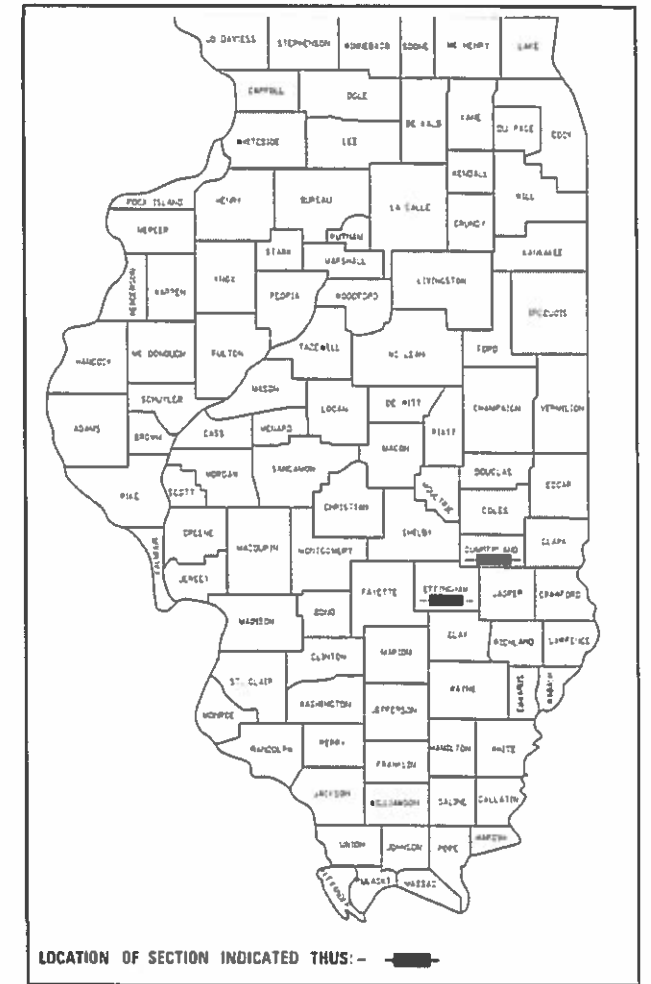
ROUTES FAI 57/70 (I 57, I 70) FAS 1707 (US 40)
SECTION D7 BEAM REPAIR 2019-1
BEAM REPAIR
EFFINGHAM & CUMBERLAND COUNTY

F.A. RTE.	SECTION	COUNTY	TOTAL SHEETS	SHEET NO.
D7 BEAM REPAIR 2019-1	**	**	7	1
ILLINOIS			CONTRACT NO. 74890	

• FAI 70 (I 57/I 70) FAS 1707 (US 40)
•• EFFINGHAM & CUMBERLAND
D-97-008-19

FOR INDEX OF SHEETS, SEE SHEET NO. 2

ADT = (I 57, I 70) 39100 (2017)
(RT 32, 33) 22300 (2017)
(US RT 40) 1800 (2017)



C-97-017-19

FAI 57/70 (I-57, I-70)
SN 025-0034

FAS 1707 (US 40)
SN 018-0008



FULL SIZE PLANS HAVE BEEN PREPARED USING STANDARD ENGINEERING SCALES. REDUCED SIZED PLANS WILL NOT CONFORM TO STANDARD SCALES IN MAKING MEASUREMENTS ON REDUCED PLANS. THE ABOVE SCALES MAY BE USED.

JULIE.
JOINT UTILITY LOCATION INFORMATION FOR EXCAVATION
1-800-892-0123
OR 811

PROJECT ENGINEER: DEBRA BARRETT
PROJECT MANAGER: MATT BOWER
PHONE: 217-342-8359
CONTRACT NO. 74890

STATE OF ILLINOIS
DEPARTMENT OF TRANSPORTATION
DIVISION OF HIGHWAYS

SUBMITTED January 10 20 19

John M. Smith
DEPUTY DIRECTOR OF HIGHWAYS REGION ENGINEER

Feb 19 20 19
Scott A. Etk
ENGINEER OF DESIGN AND ENVIRONMENT

Feb 20 20 19
David P. Chaf
DIRECTOR OF HIGHWAYS PROJECT IMPLEMENTATION

PRINTED BY THE AUTHORITY
OF THE STATE OF ILLINOIS

INDEX OF SHEETS

SHEET NO.	ITEM
1	COVER SHEET
2	INDEX OF SHEETS, HIGHWAY STANDARDS, GENERAL NOTES & LOCATION MAPS
3	SUMMARY OF QUANTITIES
4-6	REPAIR DETAILS
7	TRAFFIC CONTROL DETAILS FOR I-57/70

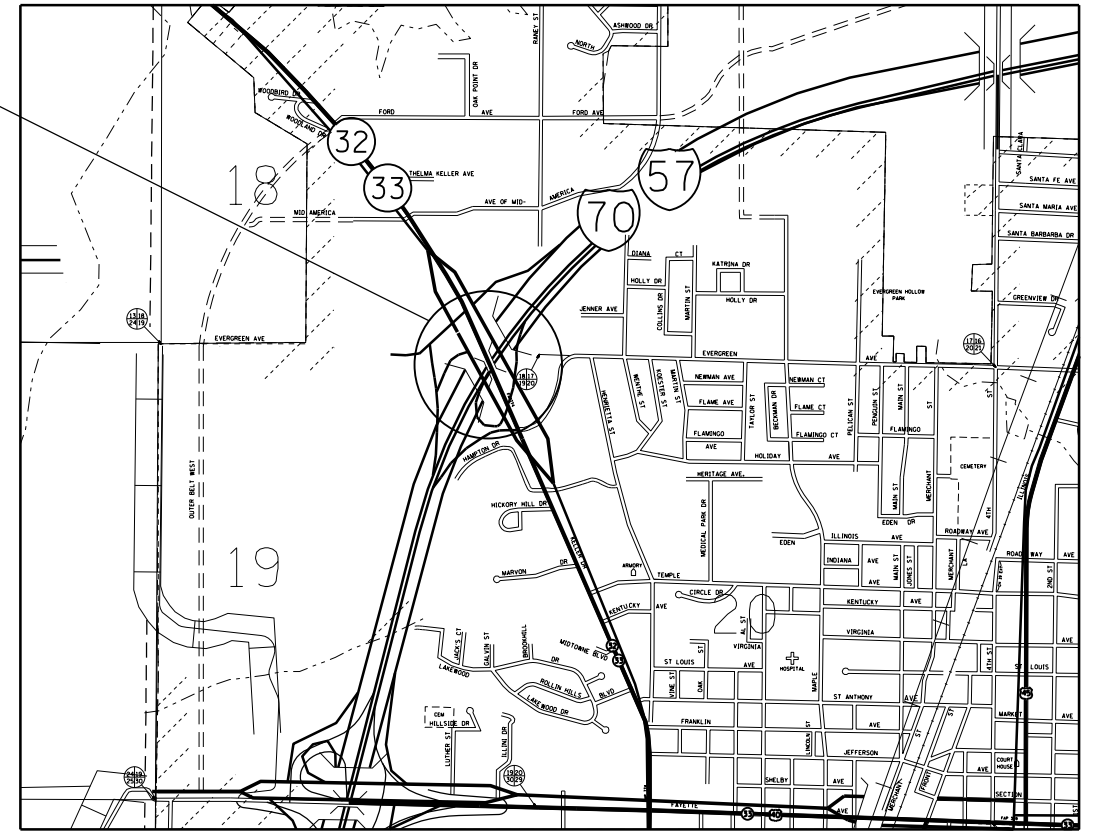
THE FOLLOWING STANDARDS ARE A PART OF THESE PLANS AND ARE INCLUDED FOLLOWING THE LAST NUMBERED SHEET OF THE PLANS.

STD. NO.	DESCRIPTION
000001-07	STANDARD SYMBOLS, ABBREVIATIONS, AND PATTERNS
001006	DECIMAL OF AN INCH AND OF A FOOT
701001-02	OFF-ROAD OPERATIONS, 2L, 2W, MORE THAN 15' AWAY
701006-05	OFF-ROAD OPERATIONS, 2L, 2W, 15' TO 24" FROM PAVEMENT EDGE
701101-05	OFF-ROAD OPERATIONS, MULTILANE, 15' TO 24" FROM PAVEMENT EDGE
701106-02	OFF-ROAD OPERATIONS, MULTILANE, MORE THAN 15' AWAY
701201-05	LANE CLOSURE, 2L, 2W, DAY ONLY, FOR SPEEDS >= 45 MPH
701426-09	LANE CLOSURE, MULTILANE, INTERMITTENT OR MOVING OPERATION, FOR SPEEDS >= 45 MPH
701428-01	TRAFFIC CONTROL, SETUP AND REMOVAL, FREEWAY/EXPRESSWAY
701901-08	TRAFFIC CONTROL DEVICES
704001-08	TEMPORARY CONCRETE BARRIER

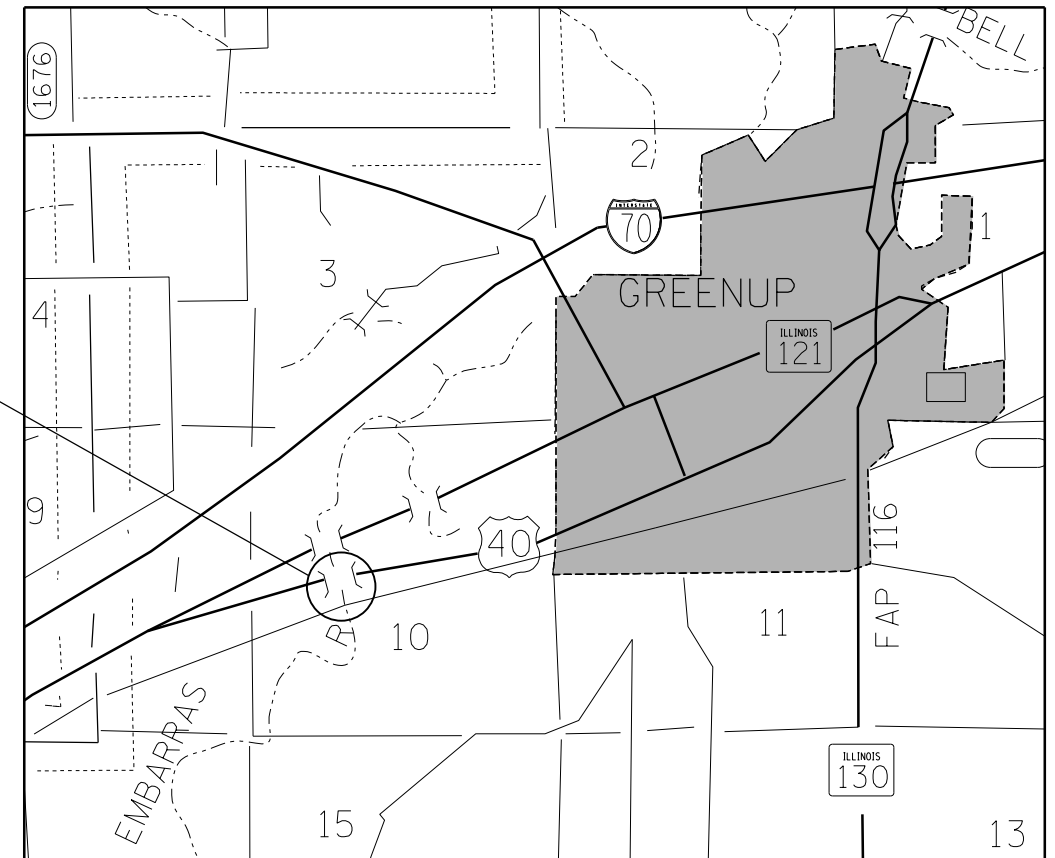
GENERAL NOTES

THE WORK INCLUDED IN THIS SECTION CONSISTS OF BEAM END REPAIRS AND ANY OTHER WORK NECESSARY TO COMPLETE THE SECTION.

F.A.I. 57/70
SN 025-0034
CARRYING IL 32/33
OVER I-57/70



FAS 1707 (US 40)
SN 018-0008
CARRYING US 40 OVER
THE EMBARRAS RIVER



- FAI 70 (I 57/I 70) FAS 1707 (US 40)
- EFFINGHAM & CUMBERLAND

MODEL: Default
FILE: h:\mhc\p\110810\B&E\BIDD\ITEC\Illinois\pov\PW\DOT\Documents\BIDD\Office\BIDD\Drawt 7\Projects\174890\CADD\Drawt 7\174890-PC\gennot06.dgn

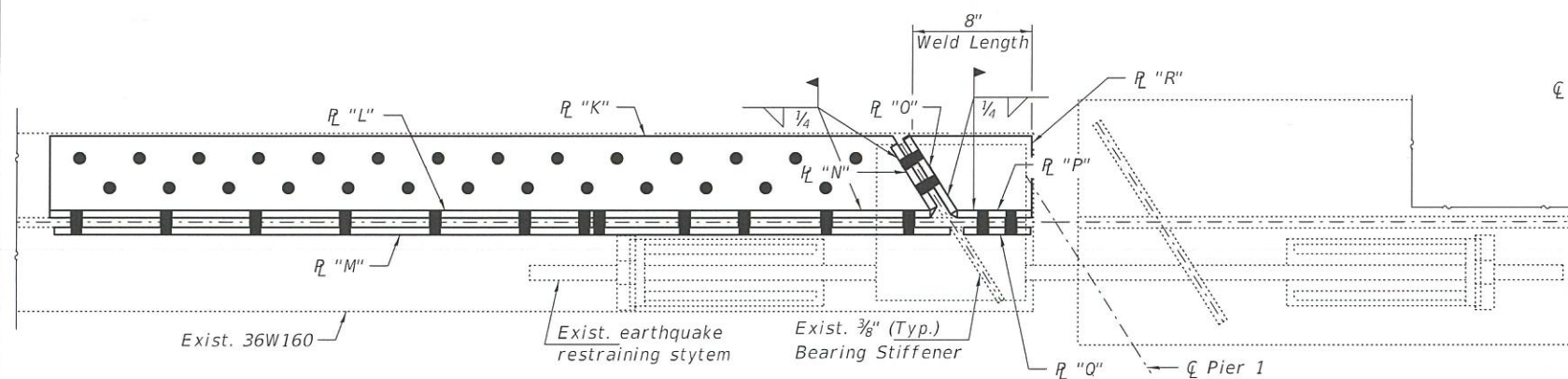
USER NAME = steffemk	DESIGNED -	REVISED -
	DRAWN -	REVISED -
PLOT SCALE = 100.0000' / in.	CHECKED -	REVISED -
PLOT DATE = 1/10/2019	DATE -	REVISED -

STATE OF ILLINOIS
DEPARTMENT OF TRANSPORTATION

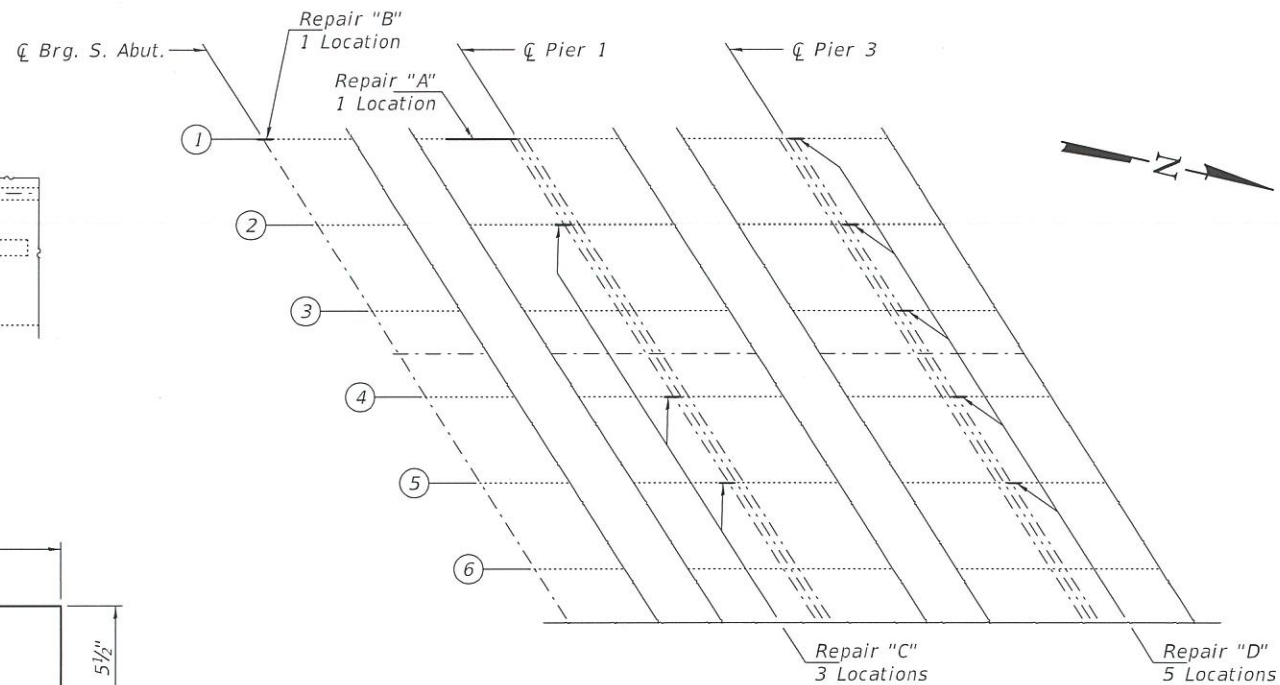
INDEX OF SHEETS, GENERAL NOTES & LOCATION MAPS

SCALE: SHEET OF SHEETS STA. TO STA.

F.A.I. RTE.	SECTION	COUNTY	TOTAL SHEETS	SHEET NO.
70 / I 57	D7 BEAM REPAIR 2019-1	EFFINGHAM	7	2
			CONTRACT NO. 74890	
ILLINOIS FED. AID PROJECT				



REPAIR "A"



PARTIAL PLAN

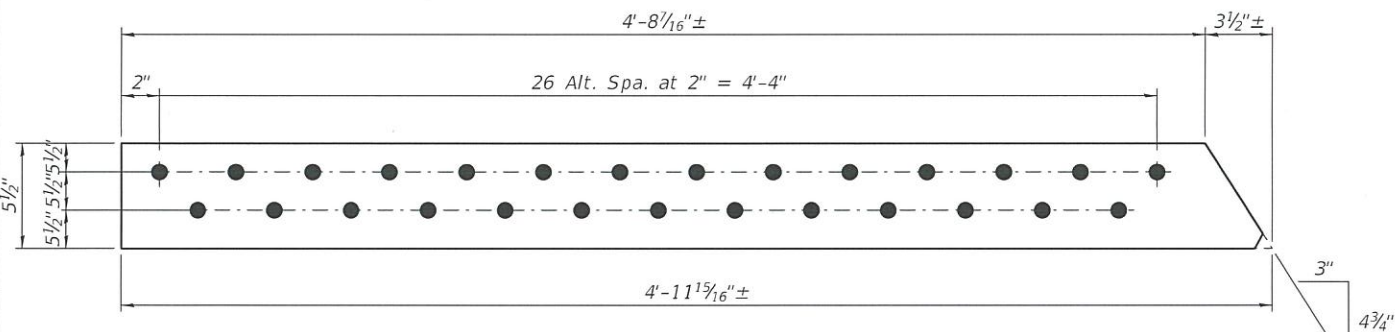


PLATE "K"

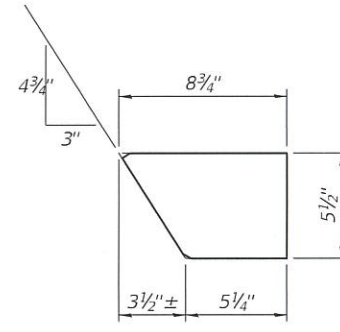


PLATE "R"

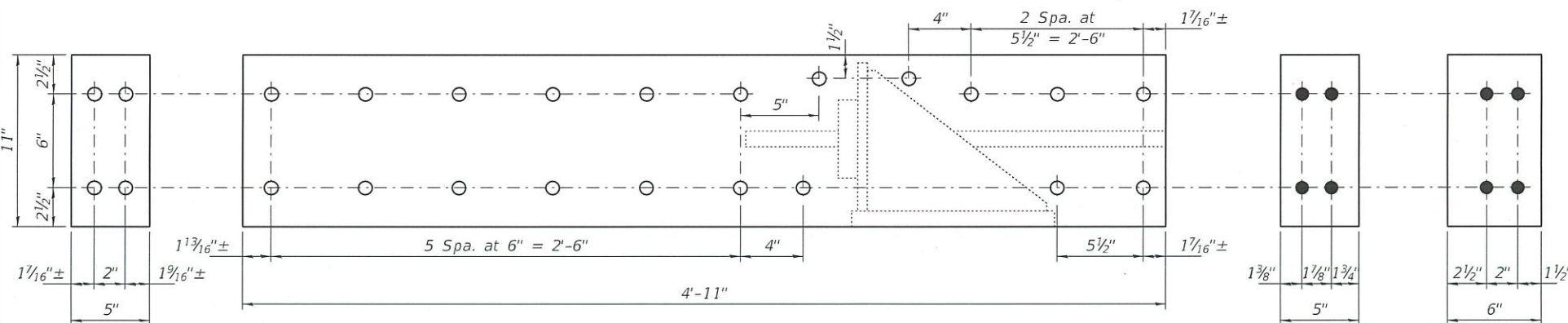


PLATE "N"

PLATE "L"

PLATE "P"

PLATE "O"

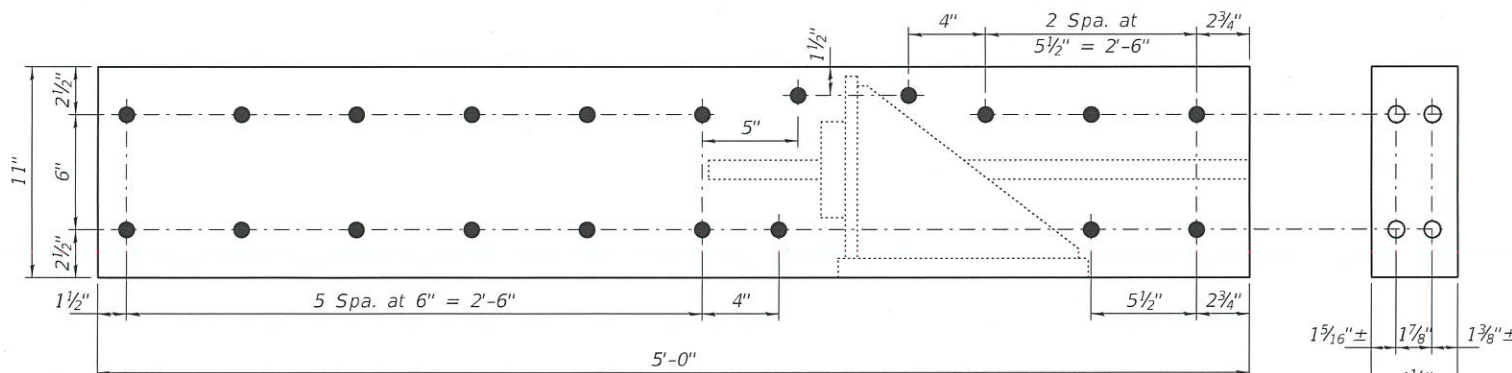


PLATE "M"

PLATE "Q"

NOTES

All structural steel shall conform to AASHTO Classification M-270 Gr. 36, unless otherwise noted.
 Fasteners shall be high strength bolts. Bolts 3/4"Ø, open holes 1 3/16"Ø, unless otherwise noted.
 Plan dimensions and details relative to existing plans are subject to nominal construction variations. The Contractor shall field verify existing dimensions and details affecting new construction and make necessary approved adjustments prior to construction or ordering of materials. Such variations shall not be cause for additional compensation for a change in scope of the work, however, the Contractor will be paid for the quantity actually furnished at the unit price bid for the work.
 Cost of removal and re-installation of all members necessary to complete the work as detailed on the plans and as specified in the Special Provisions shall be included with Structural Steel Repair.
 The existing structural steel coating contains lead. The Contractor shall take appropriate precautions to deal with the presence of lead on this project.
 Existing structural steel that will be in contact with new structural steel shall be cleaned and painted prior to erection as required by the Special Provision "Cleaning and Painting Contact Surface Areas of Existing Steel Structures".
 All new structural steel shall be shop painted with the inorganic zinc rich primer per AASHTO M300, Type 1. Cost included with Structural Steel Repair.

BOLT HOLE LEGEND

- Notes:
 All plates are 1/2" thick.
 For Repair "B", Repair "C" and Repair "D", see sheet 2 of 2.
- - Field drill using new steel as template.
 - - Shop drill holes in new steel.

BILL OF MATERIAL

ITEM	UNIT	QUANTITY
Structural Steel Repair	Pound	830



EXPIRES 11-30-2020

DESIGNED - Victor H. Dec 2
 CHECKED - Hameed Salih
 DRAWN - daburdell
 CHECKED - HSS VLF

EXAMINED - Tung A. Do
 PASSED - [Signature]
 ENGINEER OF STRUCTURAL SERVICES
 ENGINEER OF BRIDGES AND STRUCTURES

DATE - JANUARY 23, 2019
 REVISED -
 REVISED -

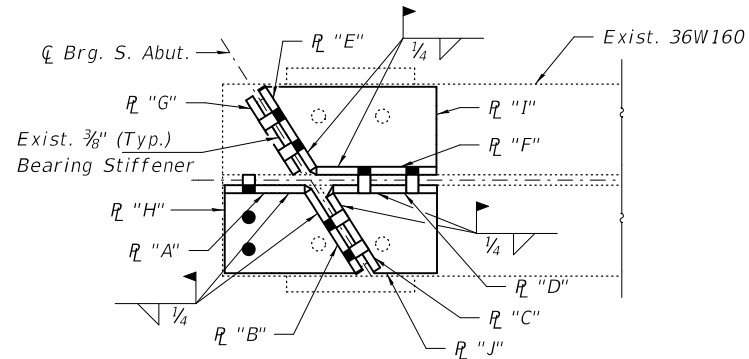
STATE OF ILLINOIS
 DEPARTMENT OF TRANSPORTATION

REPAIR DETAILS
 SN 025-0034

SHEET NO. 1 OF 2 SHEETS

F.A. RTE.	SECTION	COUNTY	TOTAL SHEETS	SHEET NO.
*	D7 BEAM REPAIR 2019-1	EFFINGHAM	7	4
CONTRACT NO. 74890				
ILLINOIS FED. AID PROJECT				

* FAI 70 (1 57/1 70) FAS 1707 (US 40)



REPAIR "B"

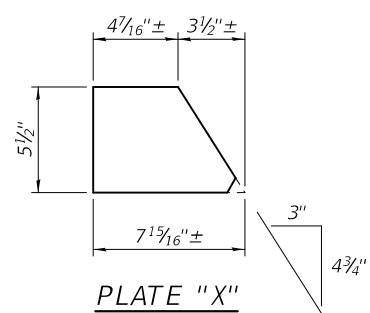


PLATE "X"

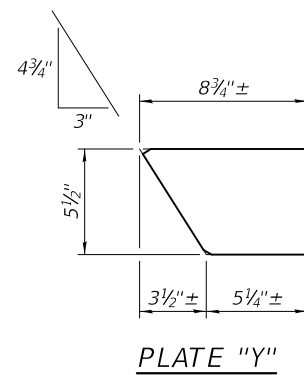
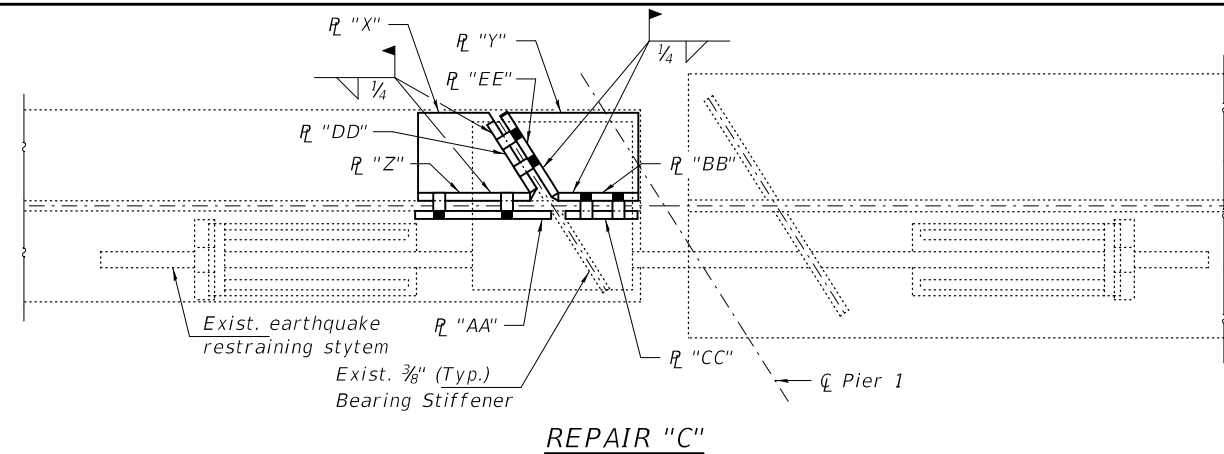


PLATE "Y"



REPAIR "C"

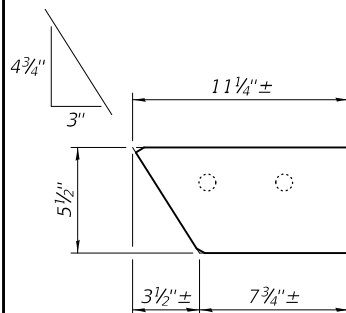


PLATE "I"

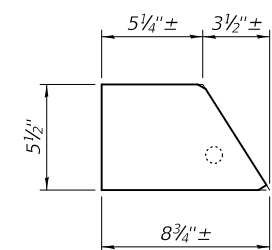


PLATE "H"

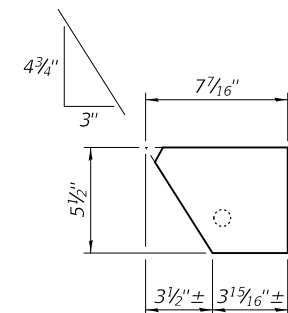


PLATE "J"

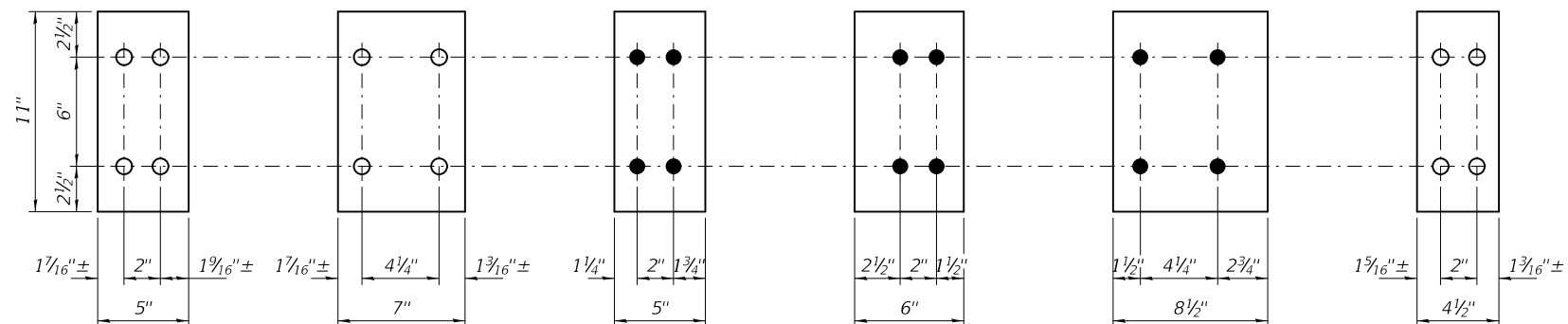


PLATE "DD"

PLATE "Z"

PLATE "BB"

PLATE "EE"

PLATE "AA"

PLATE "CC"

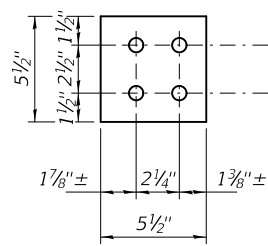


PLATE "G"

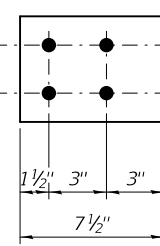


PLATE "F"

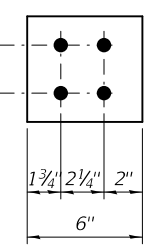
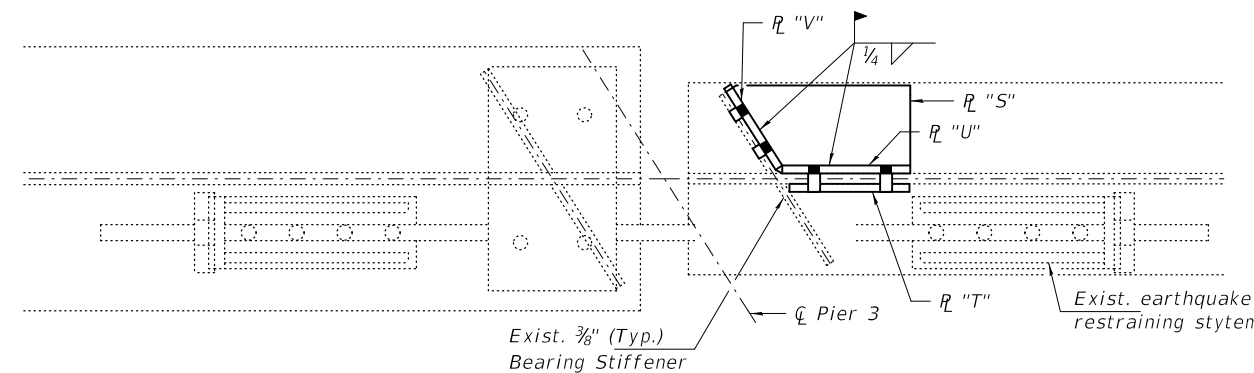


PLATE "E"



REPAIR "D"

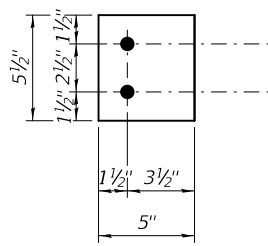


PLATE "A"

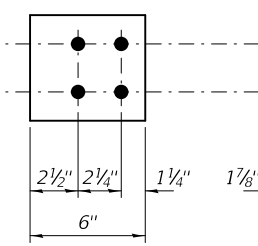


PLATE "B"

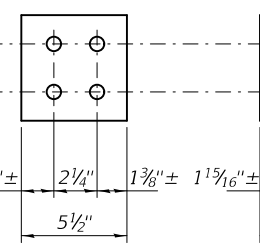


PLATE "C"

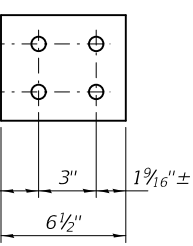


PLATE "D"

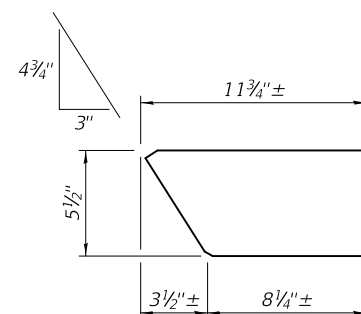


PLATE "S"

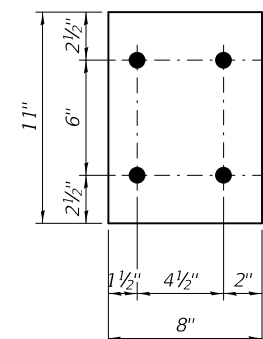


PLATE "U"

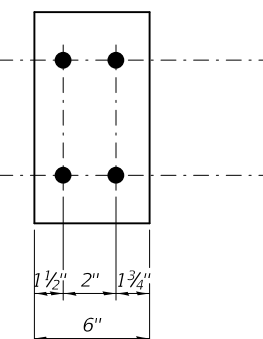


PLATE "V"

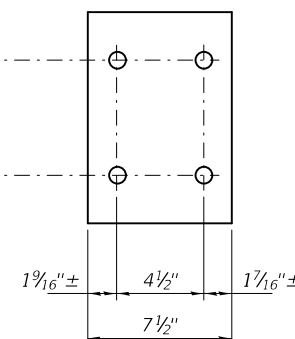


PLATE "T"

Notes:
All plates are 1/2" thick.
For Repair locations, see sheet 1 of 2.

BOLT HOLE LEGEND

- - Field drill using new steel as template.
- - Shop drill holes in new steel.

* FAI 70 (157/170) FAS 1707 (US 40)

DESIGNED - VHV	EXAMINED - <i>Timothy A. Daburdell</i>
CHECKED - HSS	ENGINEER OF STRUCTURAL SERVICES
DRAWN - <i>daburdell</i>	PASSED - <i>Carl Ringer</i>
CHECKED - VHV HSS	ENGINEER OF BRIDGES AND STRUCTURES

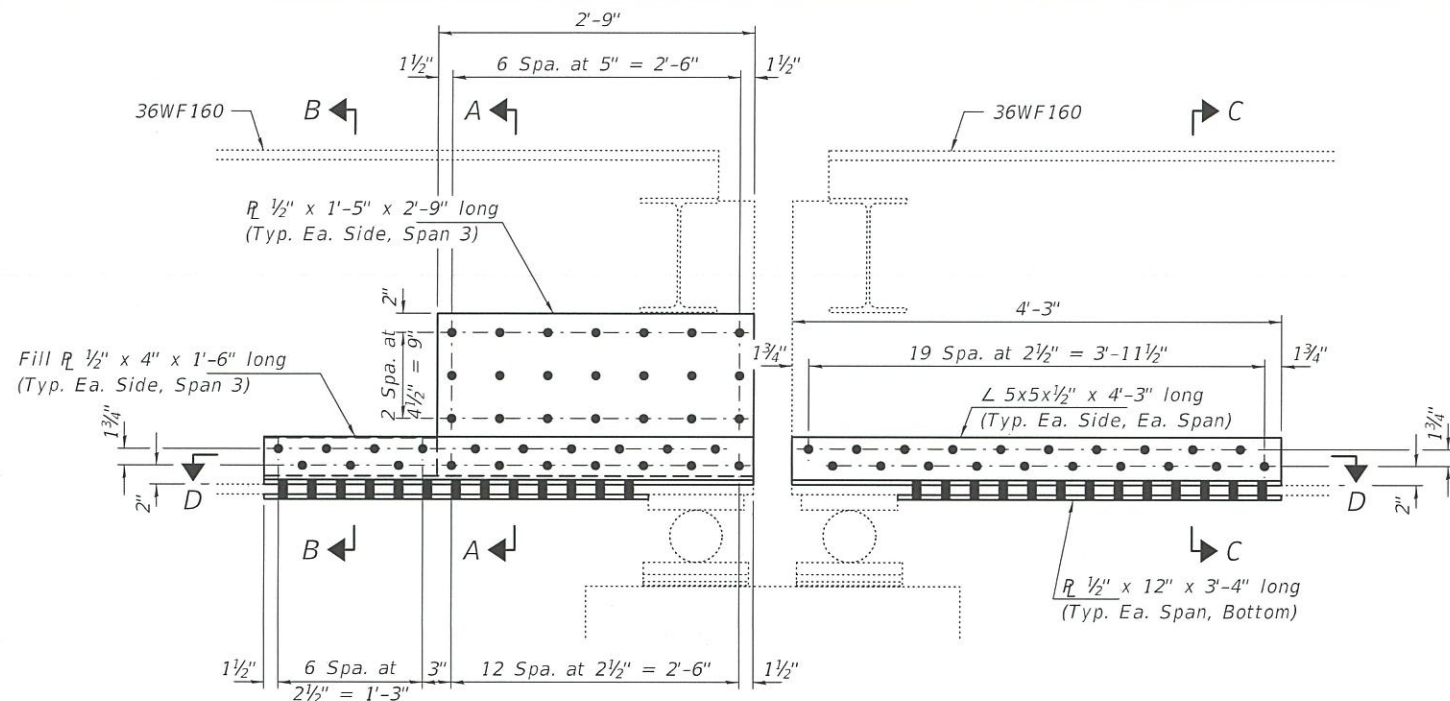
DATE - JANUARY 23, 2019
REVISED -
REVISED -

STATE OF ILLINOIS
DEPARTMENT OF TRANSPORTATION

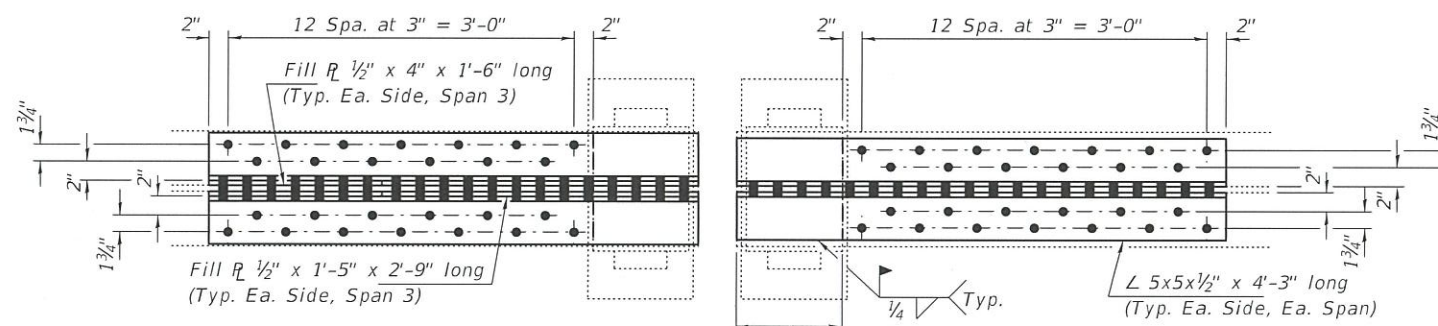
REPAIR DETAILS
SN 025-0034

SHEET NO. 2 OF 2 SHEETS

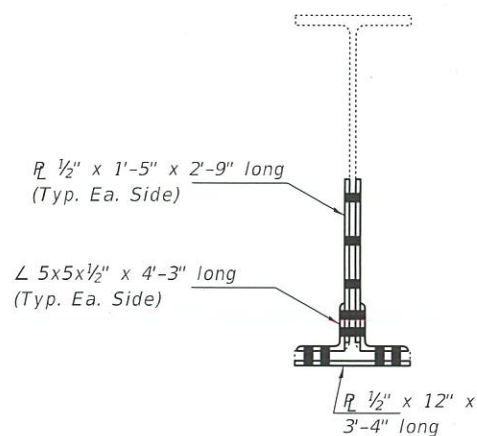
F.A. RTE.	SECTION	COUNTY	TOTAL SHEETS	SHEET NO.
-	D7 BEAM REPAIR 2019-1	EFFINGHAM	7	5
CONTRACT NO. 74890				
ILLINOIS FED. AID PROJECT				



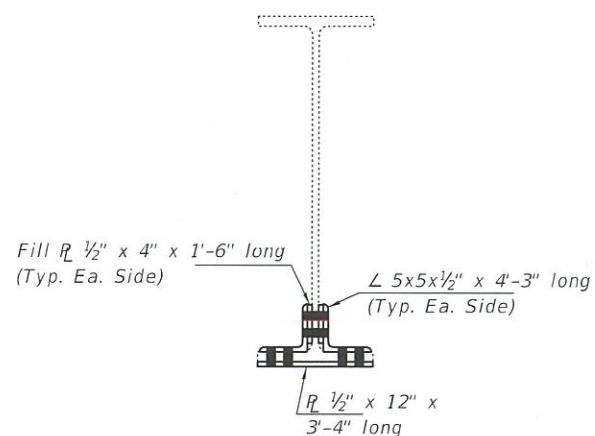
REPAIR A
(Beam 3 at Pier 3, Looking North)



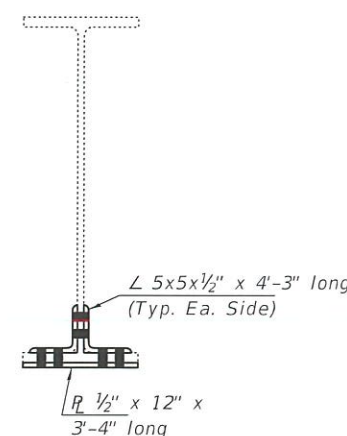
SECTION D-D
11" Weld Length
(Typ. Ea. Span)



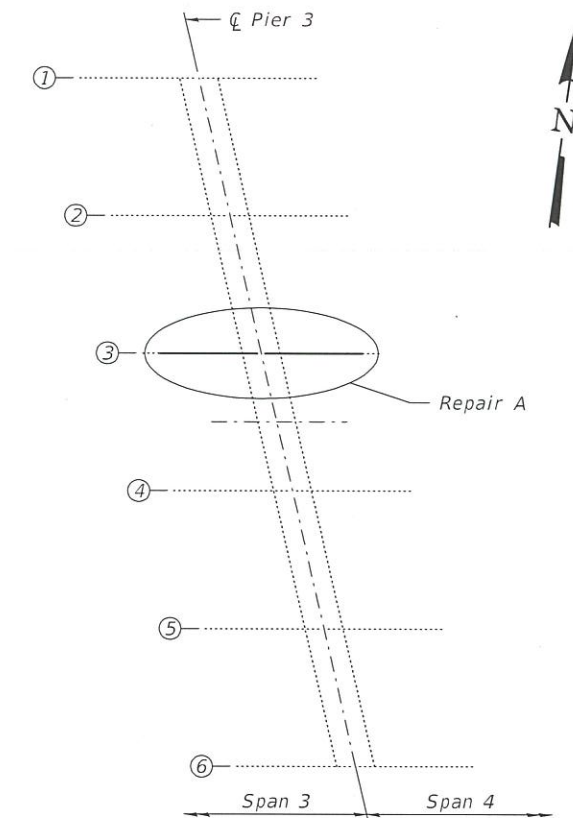
SECTION A-A



SECTION B-B



SECTION C-C



PARTIAL PLAN

NOTES

- All structural steel shall conform to AASHTO Classification M-270 Gr. 36, unless otherwise noted.
- Fasteners shall be high strength bolts. Bolts 3/4"Ø, open holes 13/16"Ø, unless otherwise noted.
- Plan dimensions and details relative to existing plans are subject to nominal construction variations. The Contractor shall field verify existing dimensions and details affecting new construction and make necessary approved adjustments prior to construction or ordering of materials. Such variations shall not be cause for additional compensation for a change in scope of the work, however, the Contractor will be paid for the quantity actually furnished at the unit price bid for the work.
- Cost of removal and re-installation of all members necessary to complete the work as detailed on the plans and as specified in the Special Provisions shall be included with Structural Steel Repair.
- The existing structural steel coating contains lead. The Contractor shall take appropriate precautions to deal with the presence of lead on this project.
- Existing structural steel that will be in contact with new structural steel shall be cleaned and painted prior to erection as required by the Special Provision "Cleaning and Painting Contact Surface Areas of Existing Steel Structures".
- All new structural steel shall be hot dip galvanized according to Special Provision "Hot Dip Galvanizing for Structural Steel".

LEGEND

- - Use holes in new steel as template

BILL OF MATERIAL

ITEM	UNIT	QUANTITY
Structural Steel Repair	Pound	680

* FAI 70 (1 57/1 70) FAS 1707 (US 40)



EXPIRES 11-30-2020

DESIGNED - *[Signature]*
 CHECKED - *[Signature]*
 DRAWN - *[Signature]*
 CHECKED - *[Signature]*

EXAMINED - *[Signature]*
 PASSED - *[Signature]*

DATE - JANUARY 23, 2019
 REVISED -
 REVISED -

STATE OF ILLINOIS
 DEPARTMENT OF TRANSPORTATION

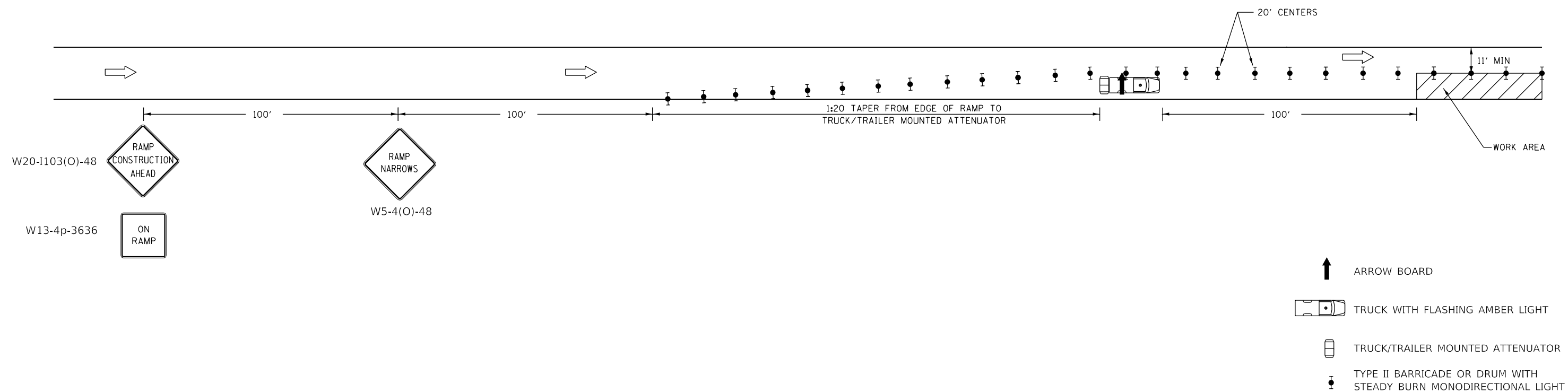
REPAIR DETAILS
 FAS 1707 (US 40) OVER EMBARRAS RIVER
 SN 018-0008

SHEET NO. 1 OF 1 SHEETS

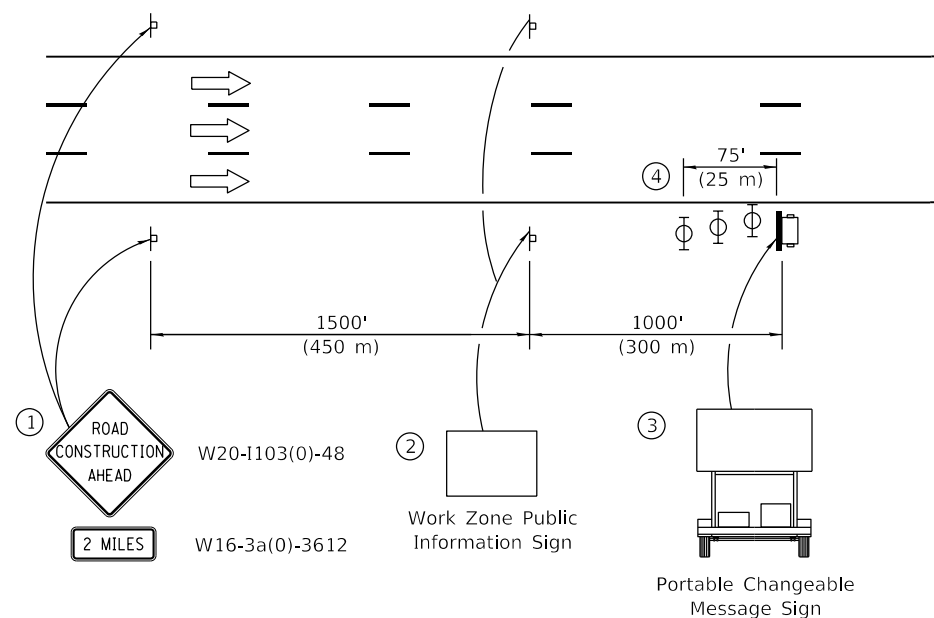
F.A. RTE.	SECTION	COUNTY	TOTAL SHEETS	SHEET NO.
*	D7 BEAM REPAIR 2019-1	CUMBERLAND	7	6

CONTRACT NO. 74890
 ILLINOIS FED. AID PROJECT

TRAFFIC CONTROL FOR ENTRANCE RAMP I-57/70



ADVANCED SIGNING TO BE USED ON I-57/70



- ① The Road Construction Ahead sign shall be located 2 miles in advance of the project limits.
- ② The message and size of the Work Zone Public Information Sign shall be as specified by the Department.
- ③ The message board shall be used to display status of lanes within the project. The primary message shall be specified by the Department.
- ④ Three, Type II barricades, drums, or vertical barricades at 25' (8 m) centers.

• FAI I 70/I 57 & FAS 1707
•• EFFINGHAM & CUMBERLAND

MODEL: Default
FILE NAME: P:\ILLINOIS\BIDDING\ITEC\Illinois\pwr\pwr\DOT\Documents\DOT - Offices\Director 7\Projects\74890\CADD\Drawings\74890-PC-plan.dgn

USER NAME = steffenmk	DESIGNED -	REVISED -
	DRAWN -	REVISED -
PLOT SCALE = 40,0000 ' / in.	CHECKED -	REVISED -
PLOT DATE = 1/10/2019	DATE -	REVISED -

**STATE OF ILLINOIS
DEPARTMENT OF TRANSPORTATION**

TRAFFIC CONTROL AND PROTECTION DETAILS

SCALE: SHEET OF SHEETS STA. TO STA.

F.A.* RTE.	SECTION	COUNTY	TOTAL SHEETS	SHEET NO.
*	D7 BEAM REPAIR 2019-1	**	7	7
CONTRACT NO. 74890				
ILLINOIS FED. AID PROJECT				