

STATE OF ILLINOIS
DEPARTMENT OF TRANSPORTATION

F.A.U. RTE.	SECTION	COUNTY	TOTAL SHEETS	SHEET NO.
4305	16-00050-00-RS	WILL	19	1
FED. ROAD DIST. NO. 1		ILLINOIS	CONTRACT NO. 61F61	

CONTRACT # 61F61

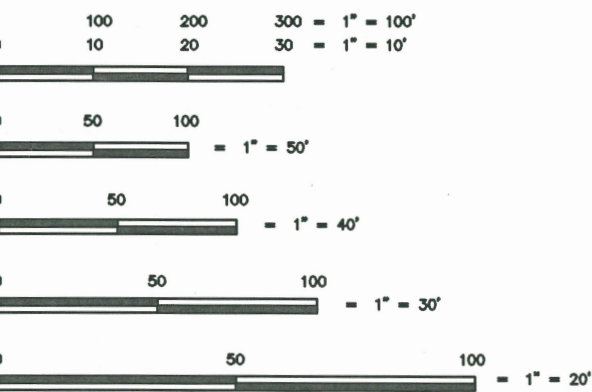
PLANS FOR PROPOSED
FEDERAL AID HIGHWAY

FAU ROUTE 4305 (BURVILLE ROAD)
STATE STREET TO IL ROUTE 394
ROADWAY RESURFACING
PROJECT NO.: **RAA2(873)**
SECTION NO.: 16-00050-00-RS
VILLAGE OF CRETE
WILL COUNTY
C-91-320-16

R 14 E 3RD PRINCIPAL MERIDIAN

FOR INDEX OF SHEETS
SEE SHEET NO. 2

	BURVILLE ROAD
2012 ADT -	2200
POSTED SPEED LIMIT -	45 mph
DESIGN PERIOD -	20 YEARS
DESIGN SPEED LIMIT -	45 mph
STREET CLASSIFICATION -	MAJOR COLLECTOR



FULL SIZE PLANS HAVE BEEN PREPARED USING STANDARD ENGINEERING SCALES. REDUCED SIZE PLANS WILL NOT CONFORM TO STANDARD SCALES. IN MAKING MEASUREMENTS ON REDUCED SIZE PLANS, THE ABOVE SCALES MAY BE USED.

Call Before You Dig
JULIE ILLINOIS ONE-CALL SYSTEM
Call: 811 OR 1-800-892-0123

JOINT UTILITY LOCATING INFORMATION FOR EXCAVATORS
48 hours before you dig (EXCLUDING SAT., SUN & HCL.)
811

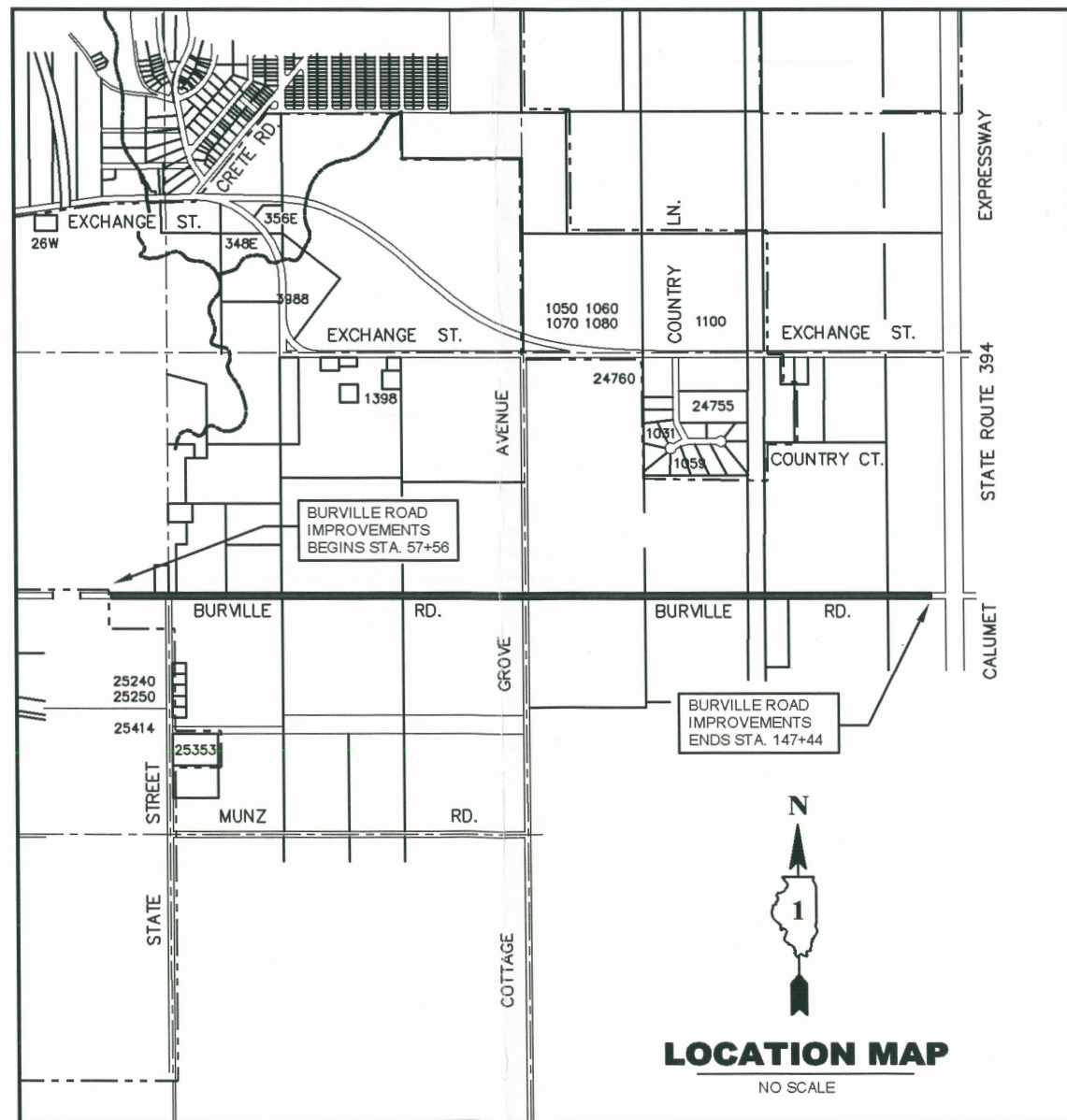
CONTRACT NO. 61F61

ILLINOIS PROFESSIONAL DESIGN FIRM NO. 184-002235

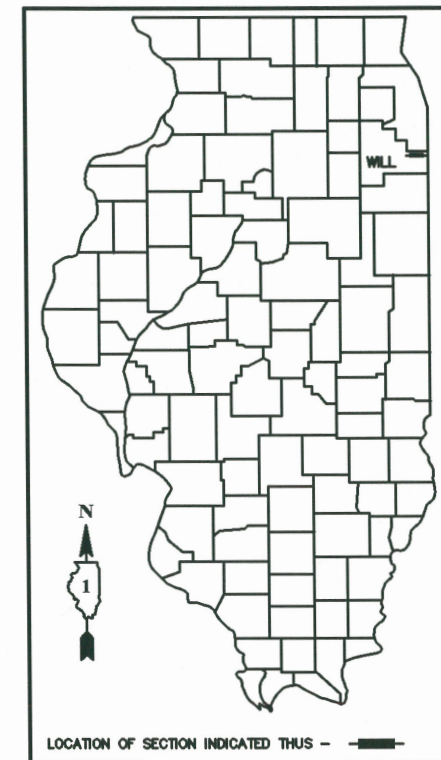
TECH 3 Consulting Group, Inc.

ENGINEERS SURVEYORS
737 West Exchange St. Crete, IL 60417
ph 708.672.4994 fax 708.672.3739

REVISED PER STATE ENGINEER 11-19-18



CRETE TOWNSHIP
GROSS AND NET LENGTH OF IMPROVEMENT = 8,988 LINEAL FEET OR 1.70 MILES



STATE OF ILLINOIS
DEPARTMENT OF TRANSPORTATION

APPROVED DEC 11 20 18
Michael J. ... VILLAGE PRESIDENT
VILLAGE OF CRETE

PASSED DECEMBER 11 20 18
Christopher Holt
DISTRICT 1 ENGINEER OF LOCAL ROADS AND STREETS

RELEASED FOR BID
BASED ON LIMITED
REVIEW DECEMBER 11 20 18
Anthony G. ...
DEPUTY DIRECTOR OF HIGHWAYS, REGION 1 ENGINEER

Robert W. Matthey
ROBERT W. MATTHEY, P.E.
LICENSE NO. 062 - 39765
LICENSE EXPIRES: 11/30/19
TECH 3 CONSULTING GROUP, INC.

39765 REGISTERED PROFESSIONAL ENGINEER OF ILLINOIS

PRINTED BY THE AUTHORITY
OF THE STATE OF ILLINOIS

FEDERAL AID PROGRAM ENGINEER: CARMEN E. RAMOS, P.E. SCHAUMBURG, IL

GENERAL NOTES

1. BEFORE STARTING ANY EXCAVATION THE CONTRACTOR SHALL CALL "J.U.L.I.E." AT (800) 892-0123 OR 811 AND (312) 744-7000 FOR FIELD LOCATIONS OF BURIED ELECTRIC, TELEPHONE AND GAS UTILITIES. (48 HOUR NOTIFICATION REQUIRED).
2. UTILITIES INDICATED ON THE PLANS ARE PROVIDED FOR THE CONTRACTOR'S USE AND ARE BASED UPON INFORMATION AVAILABLE AT THE TIME OF THE ADVERTISEMENT FOR BIDS. THE OWNER AND ENGINEER DO NOT GUARANTEE THE ACCURACY OF UTILITY INFORMATION.
3. IT SHALL BE THE CONTRACTOR'S RESPONSIBILITY TO VERIFY ALL DIMENSIONS AND CONDITIONS EXISTING IN THE FIELD PRIOR TO CONSTRUCTION AND ORDERING OF MATERIALS.
4. THE THICKNESS OF HMA MIXTURE STATED IN THE SPECIFICATIONS IS THE NOMINAL THICKNESS. DEVIATIONS FROM THE NOMINAL THICKNESS WILL BE PERMITTED WHEN SUCH DEVIATIONS OCCUR DUE TO IRREGULARITIES IN THE EXISTING SURFACE OR BASE ON WHICH THE HMA SURFACE IS PLACED.
5. THE REMOVAL AND/OR REPLACEMENT ON ANY DRIVEWAYS, PAVEMENT, CURB SIDEWALK, ETC. SHALL BE ACCOMPLISHED BY MEANS OF A SAW CUT JOINT, AT THE DIRECTION OF THE ENGINEER. THIS WORK WILL NOT BE PAID FOR SEPARATELY, BUT SHALL BE INCLUDED IN THE UNIT PRICE FOR THE VARIOUS ITEMS.
6. ANY LOOSE MATERIAL DEPOSITED IN THE FLOW LINE OF DITCHES, GUTTERS OR OTHER DRAINAGE STRUCTURES SHALL BE REMOVED BY THE END OF EACH DAY BY THE CONTRACTOR.
7. THE CONTRACTOR SHALL COORDINATE CONSTRUCTION ACTIVITIES WITH UTILITY COMPANIES, CRETE TOWNSHIP ROAD DISTRICT AND THE VILLAGE OF CRETE.
8. BUTT JOINTS WILL BE INSTALLED AT THE ENDS OF ALL RESURFACING (WHERE RESURFACING MEETS EXISTING PAVEMENT) IN ACCORDANCE WITH THE "BUTT JOINT AND HMA TAPER DETAILS" SHEET INCLUDED IN PLANS, UNLESS OTHERWISE SPECIFIED.
9. DO NOT SCALE PLANS FOR CONSTRUCTION DIMENSIONS
10. THE CONTRACTOR SHALL BE REQUIRED TO PROVIDE ACCESS TO ABUTTING PROPERTIES AT ALL TIMES DURING THE CONSTRUCTION OF THIS PROJECT.

SHEET NO.	INDEX OF SHEETS DESCRIPTION
1.	COVER SHEET
2.	INDEX OF SHEETS, HIGHWAY STANDARDS & GENERAL NOTES
3.	SUMMARY OF QUANTITIES
4.-6.	TYPICAL SECTIONS
7.-12.	PAVEMENT PLAN
13.	PAVEMENT MARKING PLAN
14.	PAVEMENT PATCHING FOR HMA SURFACED PAVEMENT (BD-22)
15.	BUTT JOINT AND HMA TAPER DETAILS (BD-32)
16.	TRAFFIC CONTROL AND PROTECTION FOR SIDE ROADS, INTERSECTIONS AND DRIVEWAYS (TC-10)
17.	DISTRICT ONE TYPICAL PAVEMENT MARKINGS (TC-13)
18.	SHORT TERM PAVEMENT MARKINGS LETTERS AND SYMBOLS (TC-16)
19.	ARTERIAL ROAD INFORMATION SIGN (TC-22)

INDEX OF HIGHWAY STANDARDS	
000001-07	STANDARD SYMBOLS, ABBREVIATIONS AND PATTERNS
442201-03	CLASS C AND D PATCHES
701006-05	OFF-RD OPERATIONS, 2L, 2W, 15'(4.5m) TO 24"(600mm) FROM PAVEMENT EDGE
701301-04	LANE CLOSURE, 2L, 2W, SHORT TIME OPERATIONS
701306-04	LANE CLOSURE, 2L, 2W, SLOW MOVING OPERATIONS DAY ONLY, FOR SPEEDS > 45 MPH
701311-03	LANE CLOSURE, 2L, 2W, MOVING OPERATION - DAY ONLY
701501-06	URBAN LANE CLOSURE, 2L, 2W, UNDIVIDED
701901-08	TRAFFIC CONTROL DEVICES

SUMMARY OF QUANTITIES

S. I.	CODE NO.	ITEM	UNIT	80/20 TOTAL QUANTITY	CONSTRUCTION TYPE CODE 0005
	20200100	EARTH EXCAVATION	CY YD	20	20
	40600290	BITUMINOUS MATERIALS (TACK COAT)	POUND	15.575	15.575
	40600982	HOT-MIX ASPHALT SURFACE REMOVAL - BUTT JOINT	SQ YD	80	80
	40603080	HOT-MIX ASPHALT BINDER COURSE, IL-19.0, N50	TON	2,920	2,920
	40603335	HOT-MIX ASPHALT SURFACE COURSE, MIX "D", N50	TON	1,980	1,980
	44000152	HOT-MIX ASPHALT SURFACE REMOVAL, 3/4"	SQ YD	22.820	22.820
	44000155	HOT-MIX ASPHALT SURFACE REMOVAL, 1 1/2"	SQ YD	380	380
	44000200	DRIVEWAY PAVEMENT REMOVAL	SQ YD	150	150
	44201705	CLASS D PATCHES, TYPE II , 5 INCH	SQ YD	210	210
	44201709	CLASS D PATCHES, TYPE III , 5 INCH	SQ YD	350	350
	44201711	CLASS D PATCHES, TYPE IV , 5 INCH	SQ YD	820	820
	48102100	AGGREGATE WEDGE SHOULDER, TYPE B	TON	490	490
	67100100	MOBILIZATION	L SUM	1	1
	70102620	TRAFFIC CONTROL AND PROTECTION, STANDARD 701501	L SUM	1	1
	70300220	TEMPORARY PAVEMENT MARKING - LINE 4"	FOOT	1350	1350
	X0327979	PAVEMENT MARKING REMOVAL - GRINDING	SQ FT	520	520
	70300100	SHORT TERM PAVEMENT MARKING	FOOT	80	80
	70300150	SHORT TERM PAVEMENT MARKING REMOVAL	SQ FT	1350	1350

* INDICATES SPECIALTY ITEMS (S.I.)


SUMMARY OF QUANTITIES

S. I.	CODE NO.	ITEM	UNIT	80/20 TOTAL QUANTITY	CONSTRUCTION TYPE CODE 0005
*	78001100	PAINT PAVEMENT MARKING - LETTERS AND SYMBOLS	SQ FT	80	80
*	78001110	PAINT PAVEMENT MARKING - LINE 4"	FOOT	1,350	1,350
	X4401198	HOT-MIX ASPHALT SURFACE REMOVAL, VARIABLE DEPTH	SQ YD	310	310
	X7030005	TEMPORARY PAVEMENT MARKING REMOVAL	SQ FT	80	80
	Z0004510	HOT-MIX ASPHALT DRIVEWAY PAVEMENT, 3"	SQ YD	350	350
	Z0030850	TEMPORARY INFORMATION SIGNING	SQ FT	43	43
	70107025	CHARGEABLE MESSAGE SIGN	DAYS	60	60

* INDICATES SPECIALTY ITEMS (S.I.)

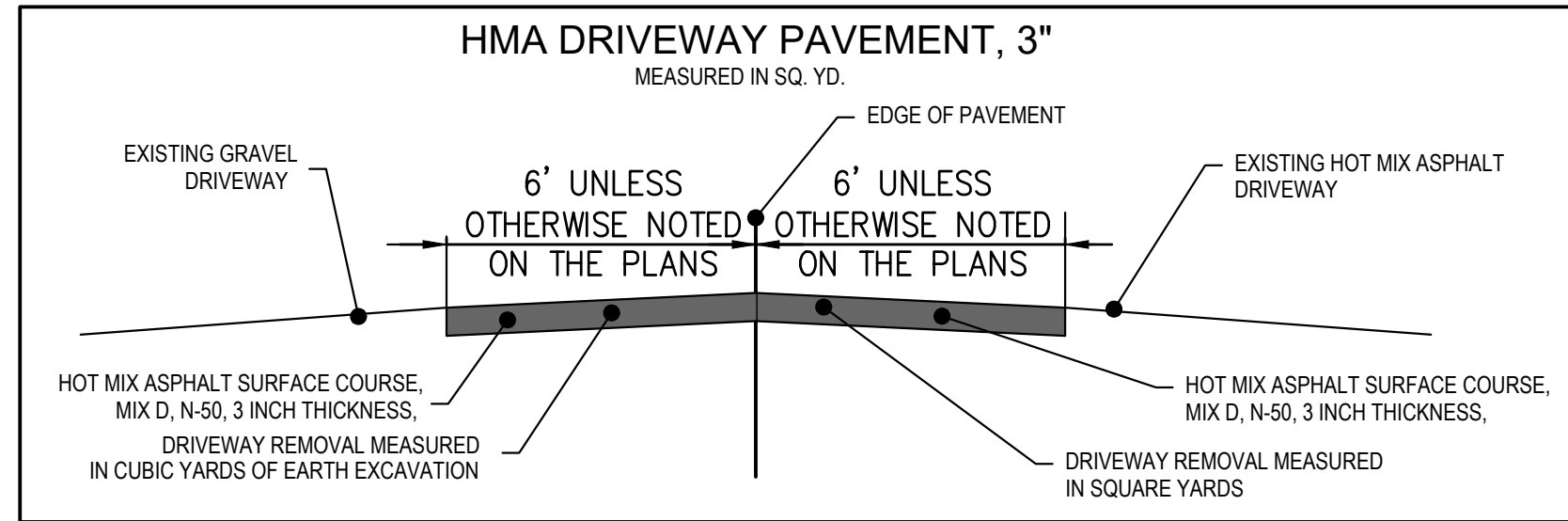
TECH 3 Consulting Group, Inc.
ENGINEERS SURVEYORS
737 West Exchange St., Carle, IL 62417
PH 708 672 4594 FAX 708 672 3739
ILLINOIS PROFESSIONAL DESIGN FIRM NO. 184-002235

USER NAME =	DESIGNED - PJC	REVISED - 11-19-18
PLOT SCALE =	DRAWN - EGH	REVISED - 12-13-18
PLOT DATE =	CHECKED - VVJS	REVISED -
	DATE -	REVISED -

 **STATE OF ILLINOIS**
DEPARTMENT OF TRANSPORTATION

BURVILLE ROAD RESURFACING
SUMMARY OF QUANTITIES

F.A.U. RTE	SECTION	COUNTY	TOTAL SHEETS	SHEET NO.
4305	16-00050-00-RS	WILL	19	3
CONTRACT NO. 61F61				
SCALE: NONE SHEET NO. 3 OF 18 SHEETS STA. - TO STA. - FED. ROAD DIST. NO. 1 ILLINOIS FED. AID PROJECT:				



NOTE: CONTRACTOR SHALL MILL BEFORE PATCHING * SPECIAL PROVISION

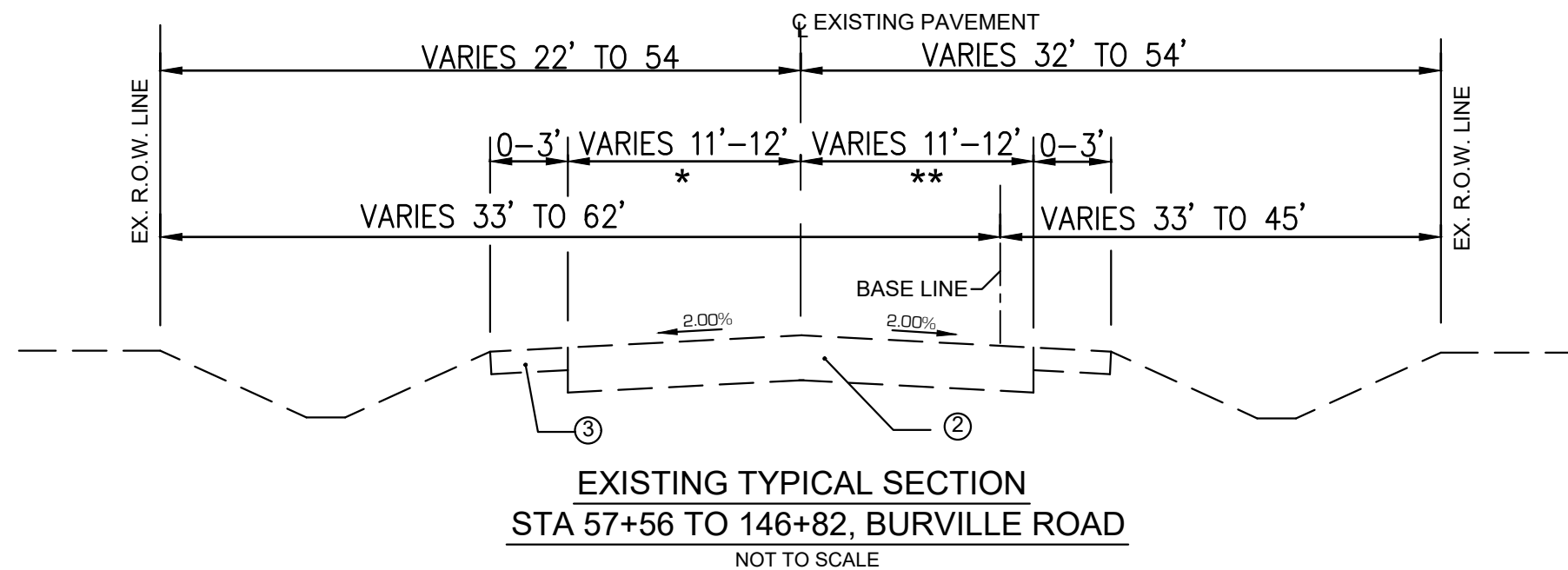
HOT-MIX ASPHALT MIXTURE REQUIREMENTS	
MIXTURE TYPE	AIR VOIDS (%)
<u>PAVEMENT RESURFACING:</u>	
HOT-MIX ASPHALT SURFACE COURSE, MIX "D", N50, (IL 9.5mm) 1 1/2"	3.5 % @ 50 GYR. *
HOT MIX ASPHALT BINDER COURSE, IL - 19.0, N50 2-1/4"	3.5 % @ 50 GYR. *
<u>PATCHING</u>	
CLASS 'D' PATCHES (HOT-MIX ASPHALT BINDER IL-19.0mm) - 5" (2 LIFTS)	4 % @ 70 GYR.
<u>DRIVEWAYS</u>	
HOT-MIX ASPHALT SURFACE COURSE, MIX "D", N50, 3" IL-9.5mm	4 % @ 50 GYR.

NOTES:

THE UNIT WEIGHT USED TO CALCULATE ALL HMA SURFACE MIXTURE QUANTITIES IS 112 LBS/SQ. YD./IN.

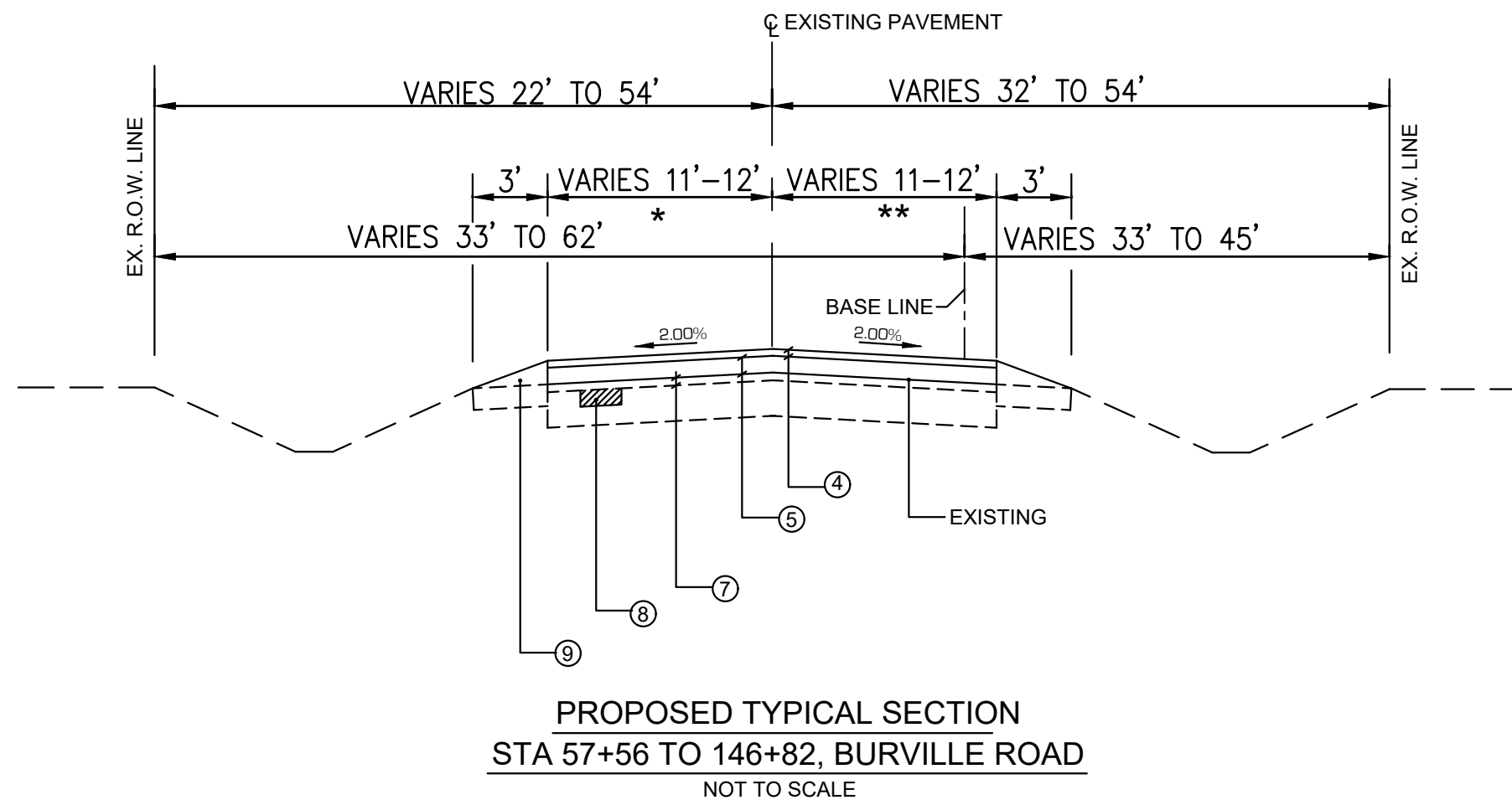
FOR NON-POLYMERIZED HMA THE "AC TYPE" SHALL BE "PG 64-22" UNLESS MODIFIED BY DISTRICT ONE SPECIAL PROVISIONS. FOR "PERCENT OF RAP" SEE DISTRICT ONE SPECIAL PROVISIONS.

FOR USE OF RECYCLED MATERIALS. SEE SPECIAL PROVISIONS.



LEGEND	
①	EXISTING CONCRETE MOUNTABLE MEDIAN STA 146+82 TO 147+44
②	EXISTING HOT-MIX ASPHALT PAVEMENT-VARIABLE
③	EXISTING AGGREGATE SHOULDER. (TYP)
④	HOT-MIX ASPHALT SURFACE COURSE, MIX D, N50, 1-1/2"
⑤	HOT MIX ASPHALT BINDER COURSE, IL-19.0,N50, 2-1/4"
⑦	HOT MIX ASPHALT SURFACE REMOVAL, 3/4"
⑧	CLASS D PATCHES, 5" TO BE DETERMINED IN THE FIELD BY THE ENGINEER. CONSTRUCTED IN 2 LIFTS
⑨	AGGREGATE SHOULDER 0"-3-3/4", TYPICAL

- * STA 145+00 TO 146+82 PAVEMENT
WIDTH VARIES FROM 12' TO 20'
- ** STA 145+00 TO 146+82 PAVEMENT
WIDTH VARIES FROM 12' TO 31'



TECH 3 Consulting Group, Inc.
 ENGINEERS SURVEYORS
 737 West Exchange St., Crete, IL 60417
 JOB NO. 14908 ph 708.672.4994 fax 708.672.3739
 ILLINOIS PROFESSIONAL DESIGN FIRM NO. 184-002235

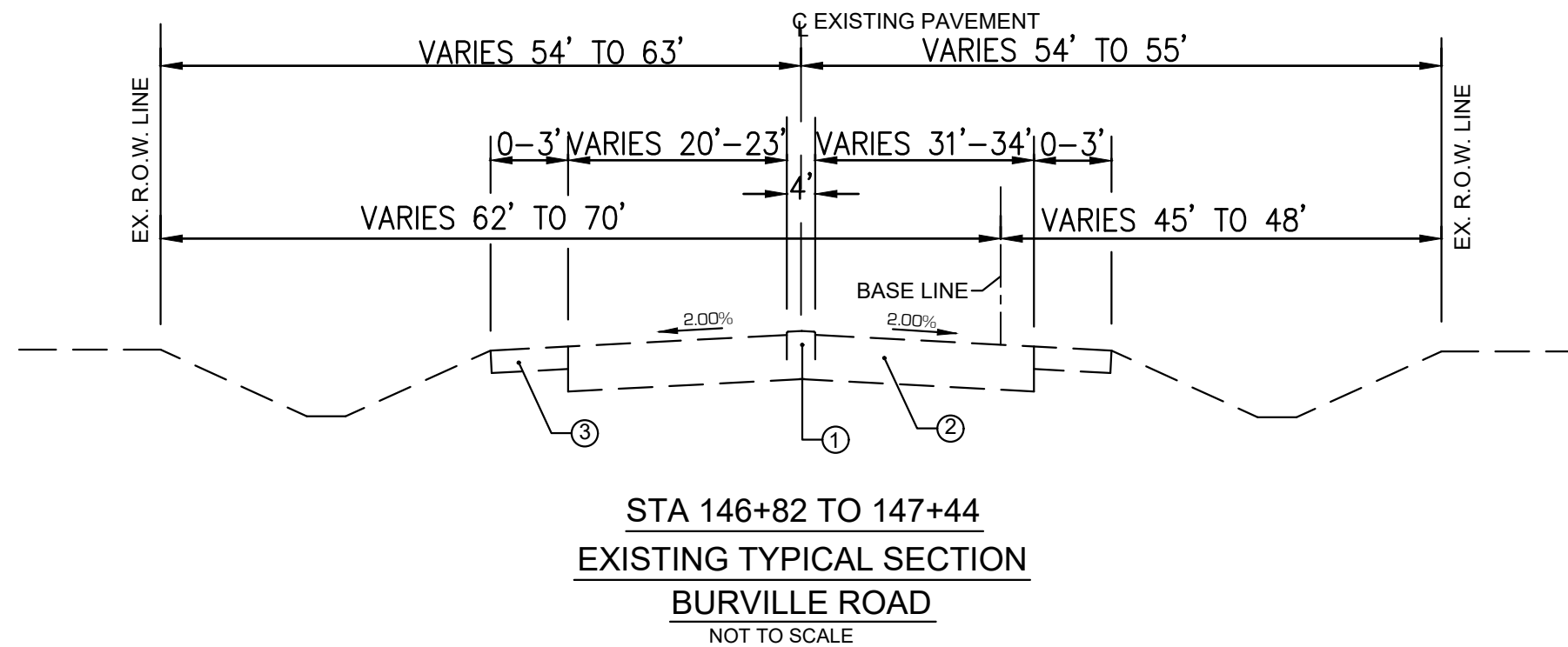
USER NAME =	DESIGNED - PJC	REVISED - 11-19-18
	DRAWN - EGH	REVISED - 12-13-18
PLOT SCALE =	CHECKED - WJS	REVISED -
PLOT DATE =	DATE -	REVISED -



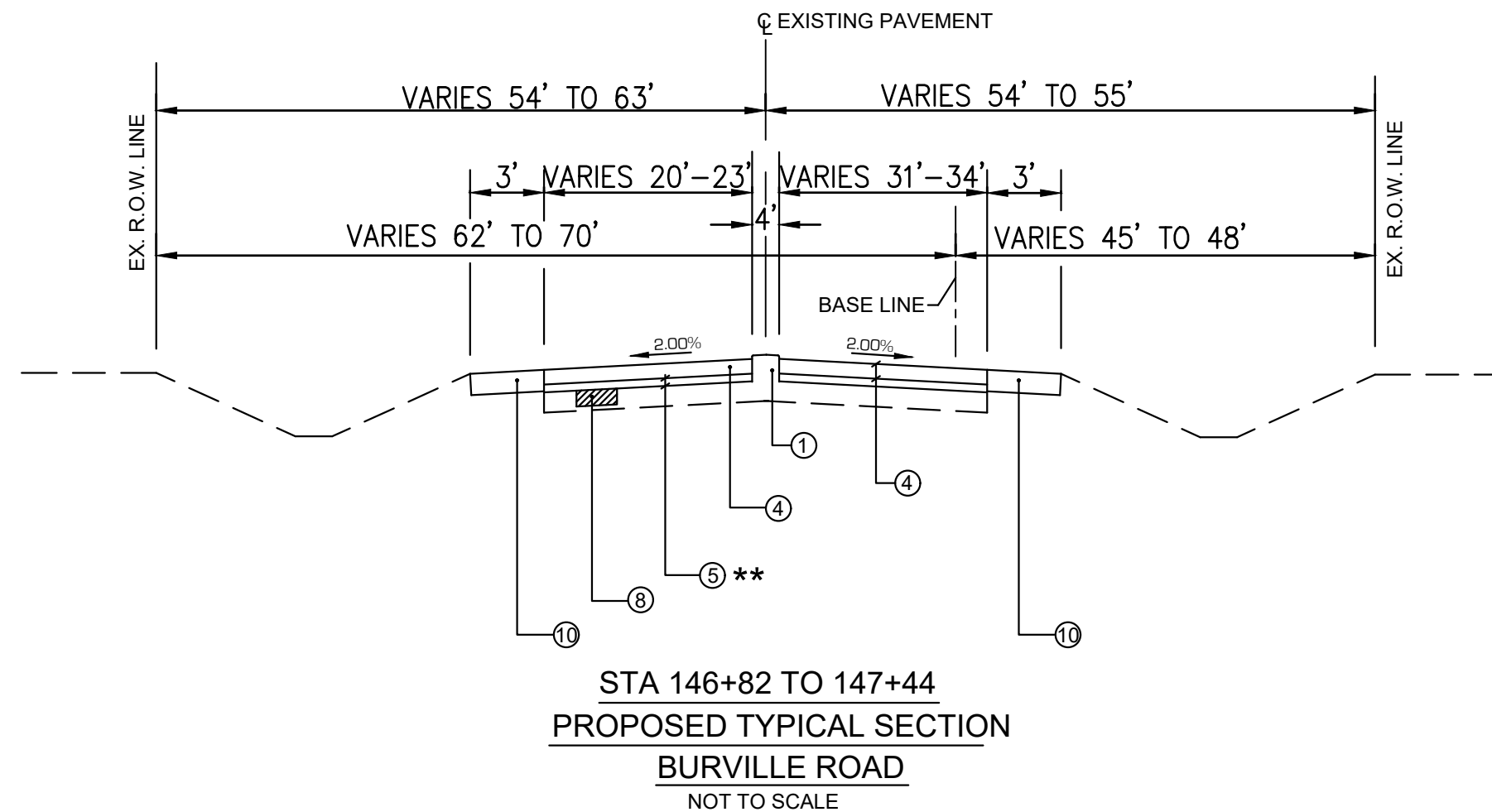
BURVILLE ROAD RESURFACING
STA. 57+56 TO STA. 147+44
TYPICAL SECTIONS

F.A.U. RTE.	SECTION	COUNTY	TOTAL SHEETS	SHEET NO.
4305	16-00050-00-RS	WILL	19	5
FED. ROAD DIST. NO. 1		ILLINOIS	FED. AID PROJECT:	

SCALE: AS NOTED SHEET NO. OF SHEETS STA. TO STA.



- ### LEGEND
- ① EXISTING CONCRETE MOUNTABLE MEDIAN
STA 146+82 TO 147+44
 - ② EXISTING HOT-MIX ASPHALT PAVEMENT
 - ③ EXISTING AGGREGATE SHOULDER. (TYP)
 - ④ HOT-MIX ASPHALT SURFACE COURSE,
MIX D, N50, 1-1/2"
 - ⑤ HOT MIX ASPHALT BINDER COURSE, IL-19.0,N50, 2-1/4"
 - ⑦ HOT MIX ASPHALT SURFACE REMOVAL, 1-1/2"
 - ⑧ CLASS D PATCHES, 5" TO BE DETERMINED IN THE
FIELD BY THE ENGINEER. CONSTRUCTED IN 2 LIFTS
 - ⑨ AGGREGATE SHOULDER 0"-3-3/4", TYPICAL
 - ⑩ AGGREGATE SHOULDER, TYPE B



****** STA 146+22 TO 146+82 HOT MIX
ASPHALT SURFACE REMOVAL
VARIABLE DEPTH 3/4" - 1-1/2"

TECH 3 Consulting Group, Inc.
ENGINEERS SURVEYORS
737 West Exchange St. Crete, IL 60417
JOB NO. 14908 ph 708.672.4694 fax 708.672.3759
ILLINOIS PROFESSIONAL DESIGN FIRM NO. 184-002235

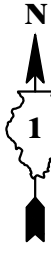
USER NAME =	DESIGNED - PJC	REVISED - 11-19-18
PLOT SCALE =	DRAWN - EGH	REVISED -
PLOT DATE =	CHECKED - WJS	REVISED -
	DATE -	REVISED -



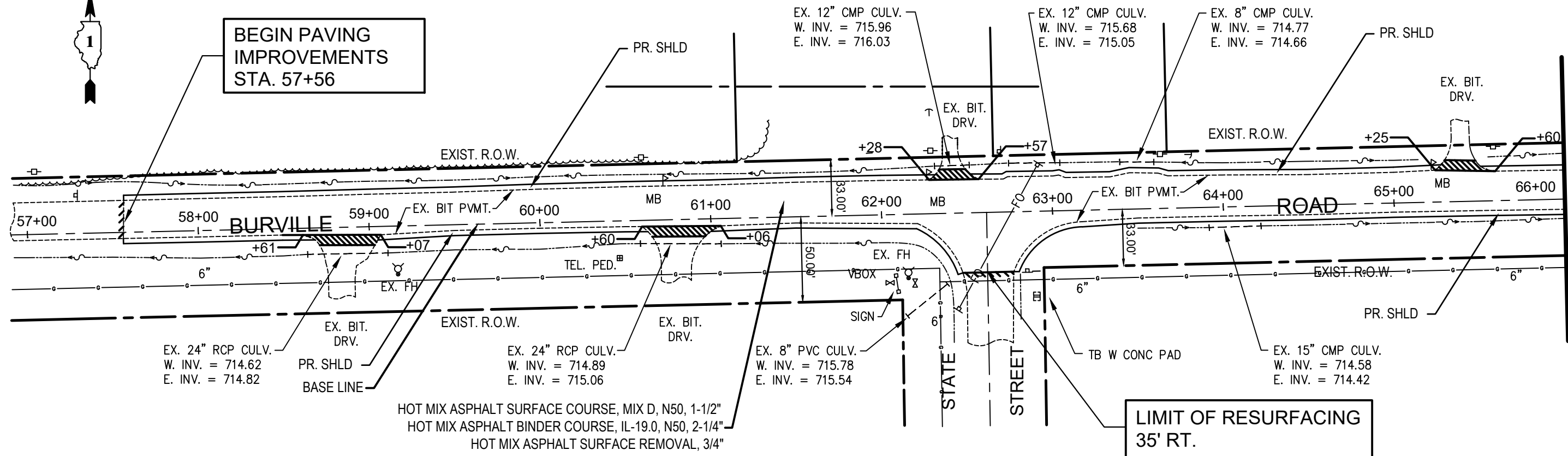
SCALE: AS NOTED SHEET NO. OF SHEETS STA. TO STA.

BURVILLE ROAD RESURFACING
STA. 57+56 TO STA. 147+44
TYPICAL SECTIONS

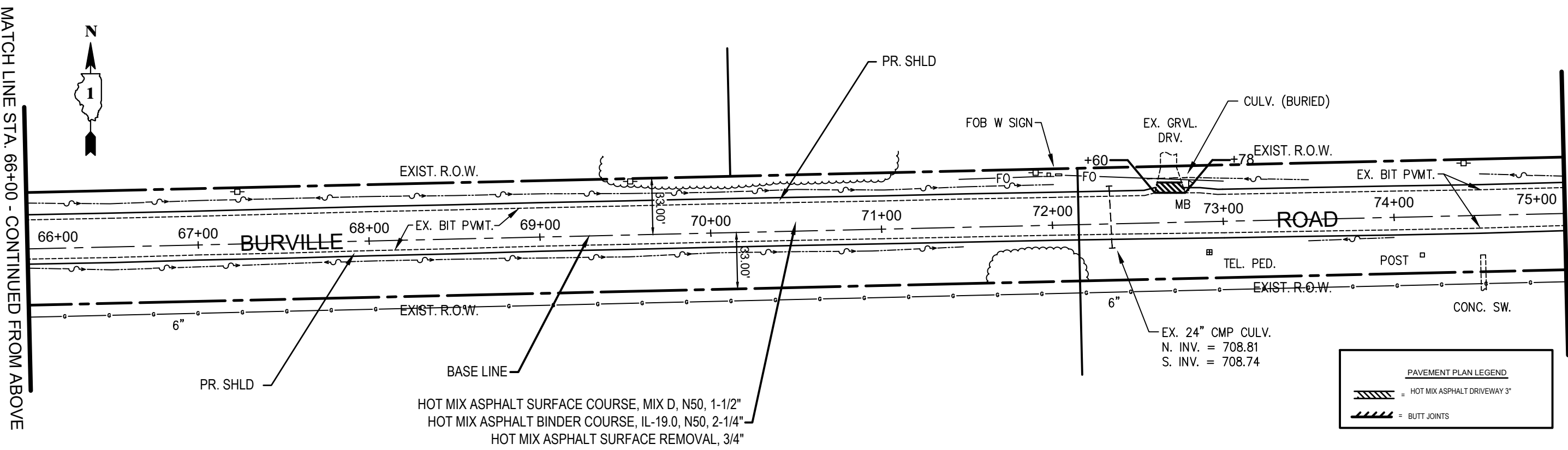
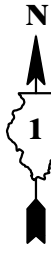
F.A.U. RTE.	SECTION	COUNTY	TOTAL SHEETS	SHEET NO.
4305	16-00050-00-RS	WILL	19	6
FED. ROAD DIST. NO. 1		ILLINOIS	CONTRACT NO. 61F61	
FED. AID PROJECT:				



BEGIN PAVING IMPROVEMENTS STA. 57+56



MATCH LINE STA. 66+00 - CONTINUED BELOW



MATCH LINE STA. 66+00 - CONTINUED FROM ABOVE

MATCH LINE STA. 75+00 - CONTINUED ON SHEET 8

PAVEMENT PLAN LEGEND	
	HOT MIX ASPHALT DRIVEWAY 3"
	BUTT JOINTS

TECH 3 Consulting Group, Inc.
 ENGINEERS SURVEYORS
 737 West Exchange St. Crete, IL 60417
 JOB NO. 14908 ph 708.672.4994 fax 708.672.3739
 ILLINOIS PROFESSIONAL DESIGN FIRM NO. 184-002235

USER NAME =
 PLOT SCALE =
 PLOT DATE =

DESIGNED - PJC
 DRAWN - EGH
 CHECKED - WJS
 DATE -

REVISED - 11-19-18
 REVISED - 12-13-18
 REVISED -
 REVISED -

STATE OF ILLINOIS
 DEPARTMENT OF TRANSPORTATION

BURVILLE ROAD RESURFACING
 STA. 57+56 TO STA. 147+44
PAVEMENT PLAN - STA. 57+56 TO 75+00

F.A.U. RTE.	SECTION	COUNTY	TOTAL SHEETS	SHEET NO.
4305	16-00050-00-RS	WILL	19	7
FED. ROAD DIST. NO. 1		ILLINOIS	FED. AID PROJECT:	

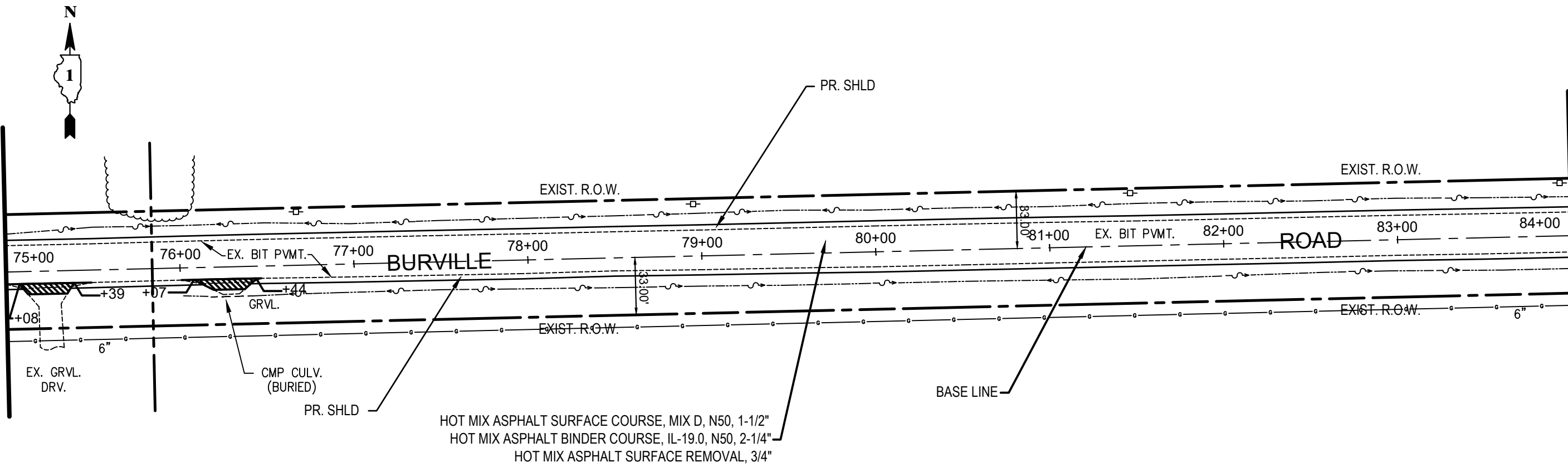
SCALE: 1" = 30'

SHEET NO. OF SHEETS STA. TO STA.

CONTRACT NO. 61F61

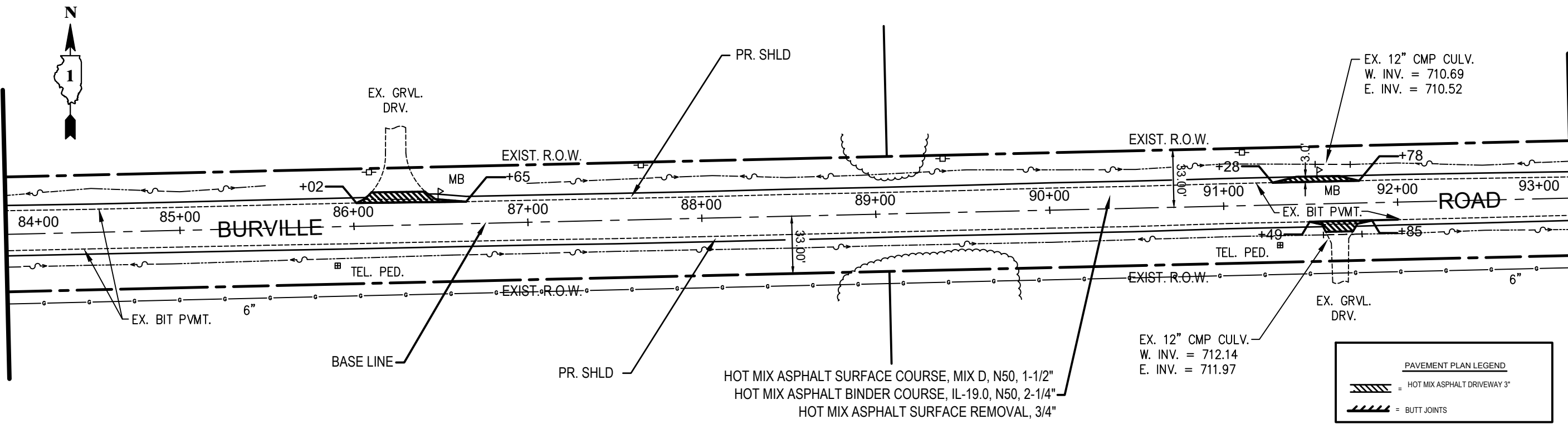
MATCH LINE STA. 75+00 - CONTINUED FROM SHEET 7

MATCH LINE STA. 84+00 - CONTINUED BELOW



MATCH LINE STA. 84+00 - CONTINUED FROM ABOVE

MATCH LINE STA. 93+00 - CONTINUED ON SHEET 9



TECH 3 Consulting Group, Inc.
ENGINEERS SURVEYORS
737 West Exchange St., Crete, IL 60417
JOB NO. 14908 ph 708.672.4994 fax 708.672.3739
ILLINOIS PROFESSIONAL DESIGN FIRM NO. 184-002235

USER NAME =
DESIGNED - PJC
DRAWN - EGH
CHECKED - WJS
DATE -

REVISD - 11-19-18
REVISD - 12-13-18
REVISD -
REVISD -

STATE OF ILLINOIS
DEPARTMENT OF TRANSPORTATION

BURVILLE ROAD RESURFACING
STA. 57+56 TO STA. 147+44
PAVEMENT PLAN - STA. 75+00 TO 93+00

SCALE: 1" = 30'
SHEET NO. OF SHEETS
STA. TO STA.

F.A.U. RTE. 4305
SECTION 16-00050-00-RS
COUNTY WILL
TOTAL SHEETS 18
SHEET NO. 8

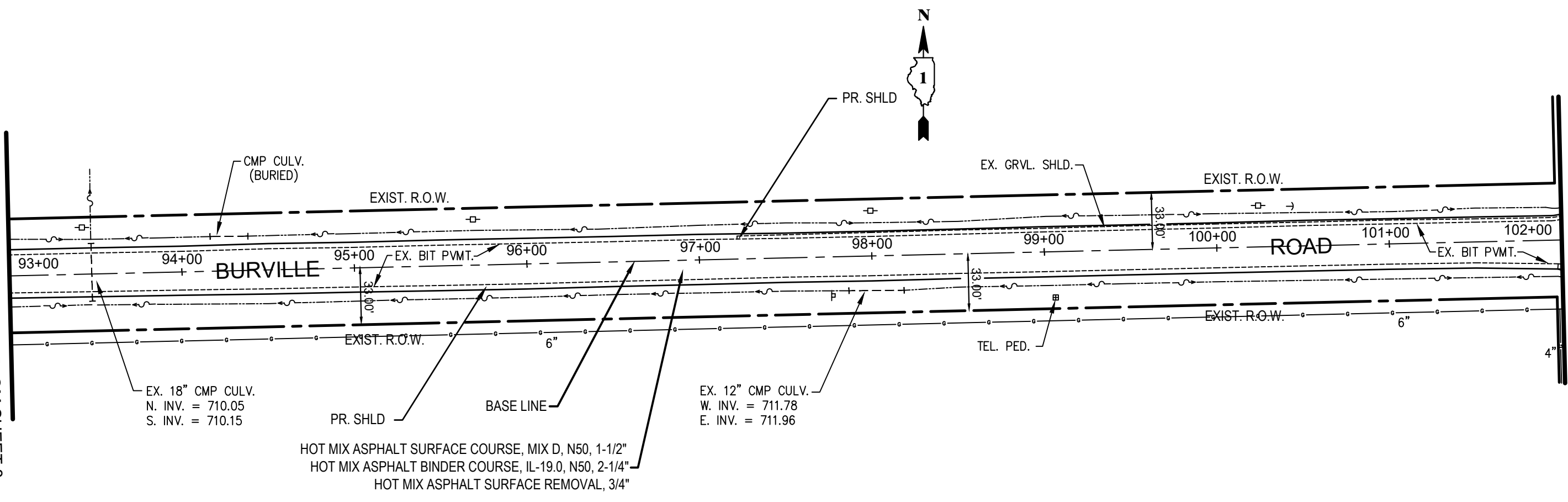
CONTRACT NO. 61F61
FED. ROAD DIST. NO. 1 ILLINOIS
FED. AID PROJECT:

PAVEMENT PLAN LEGEND

- = HOT MIX ASPHALT DRIVEWAY 3"
- = BUTT JOINTS

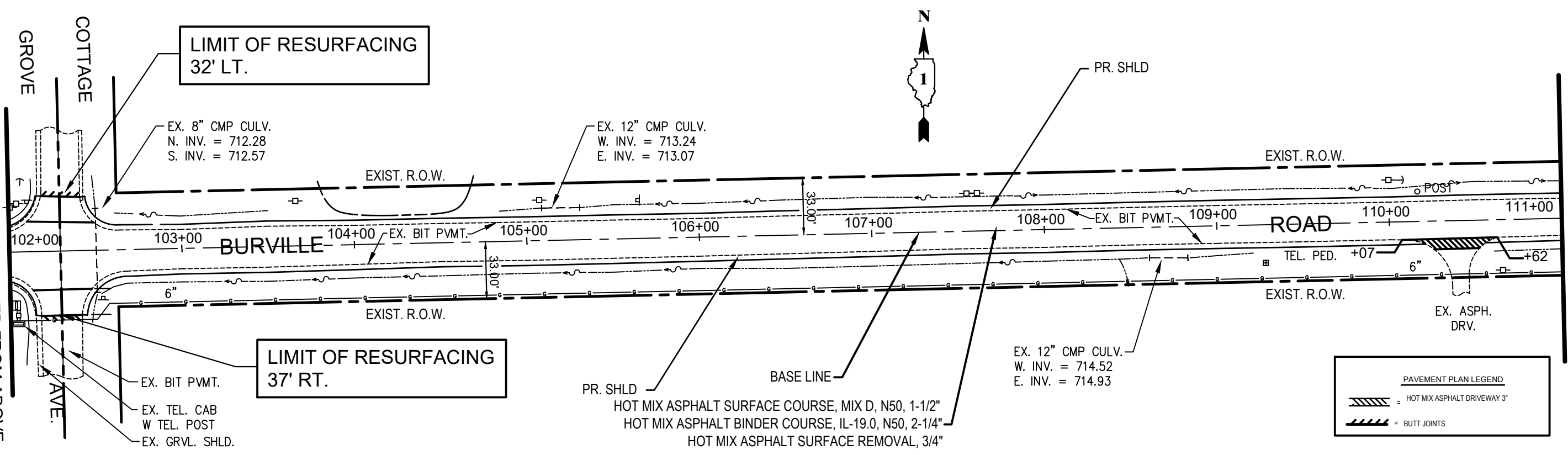
MATCH LINE STA. 102+00 - CONTINUED BELOW

MATCH LINE STA. 93+00 - CONTINUED FROM SHEET 8



MATCH LINE STA. 111+00 - CONTINUED ON SHEET 10

MATCH LINE STA. 102+00 - CONTINUED FROM ABOVE



PAVEMENT PLAN LEGEND	
	HOT MIX ASPHALT DRIVEWAY 3"
	BUTT JOINTS

TECH 3 Consulting Group, Inc.
 ENGINEERS SURVEYORS
 737 West Exchange St. Crete, IL 60417
 JOB NO. 14908 ph 708.672.4994 fax 708.672.3739
 ILLINOIS PROFESSIONAL DESIGN FIRM NO. 184-002235

USER NAME =
 PLOT SCALE =
 PLOT DATE =

DESIGNED - PJC
 DRAWN - EGH
 CHECKED - WJS
 DATE -

REVISED - 11-19-18
 REVISED - 1213-18
 REVISED -
 REVISED -

STATE OF ILLINOIS
 DEPARTMENT OF TRANSPORTATION

BURVILLE ROAD RESURFACING
 STA. 57+56 TO STA. 147+44
 PAVEMENT PLAN - STA. 93+00 TO 111+00

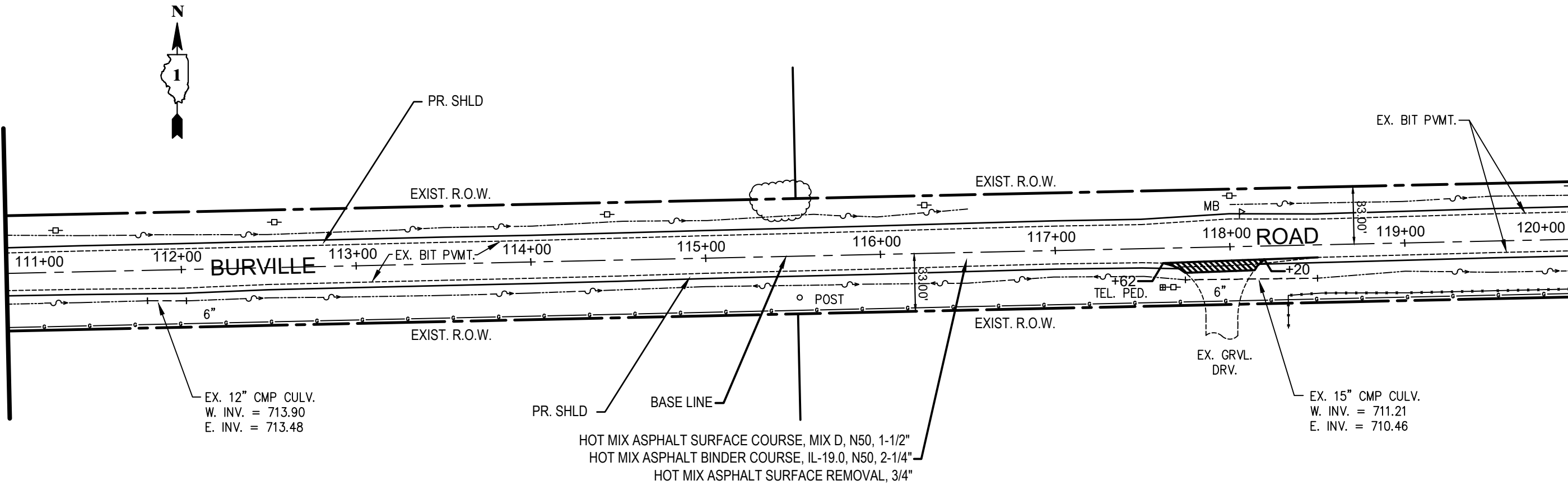
F.A.U. RTE.	SECTION	COUNTY	TOTAL SHEETS	SHEET NO.
4305	16-00050-00-RS	WILL	19	9
FED. ROAD DIST. NO. 1		ILLINOIS	FED. AID PROJECT:	

SCALE: 1" = 30'
 SHEET NO. OF SHEETS STA. TO STA.

CONTRACT NO. 61F61

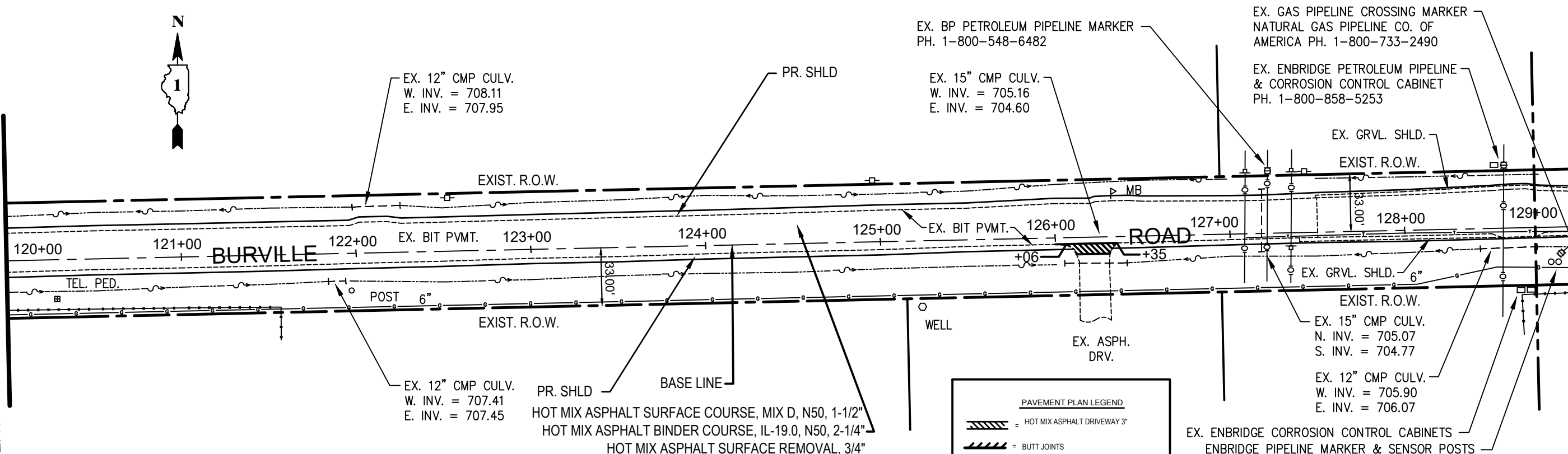
MATCH LINE STA. 111+00 - CONTINUED FROM SHEET 9

MATCH LINE STA. 120+00 - CONTINUED BELOW



MATCH LINE STA. 120+00 - CONTINUED FROM ABOVE

MATCH LINE STA. 129+00 - CONTINUED ON SHEET 11



TECH 3 Consulting Group, Inc.
 ENGINEERS SURVEYORS
 737 West Exchange St., Crete, IL 60417
 JOB NO. 14908 ph 708.672.4994 fax 708.672.3739
 ILLINOIS PROFESSIONAL DESIGN FIRM NO. 184-002235

USER NAME =	DESIGNED - PJC	REVISED - 11-19-18
PLOT SCALE =	DRAWN - EGH	REVISED - 12-13-18
PLOT DATE =	CHECKED - WJS	REVISED -
	DATE -	REVISED -

STATE OF ILLINOIS
 DEPARTMENT OF TRANSPORTATION

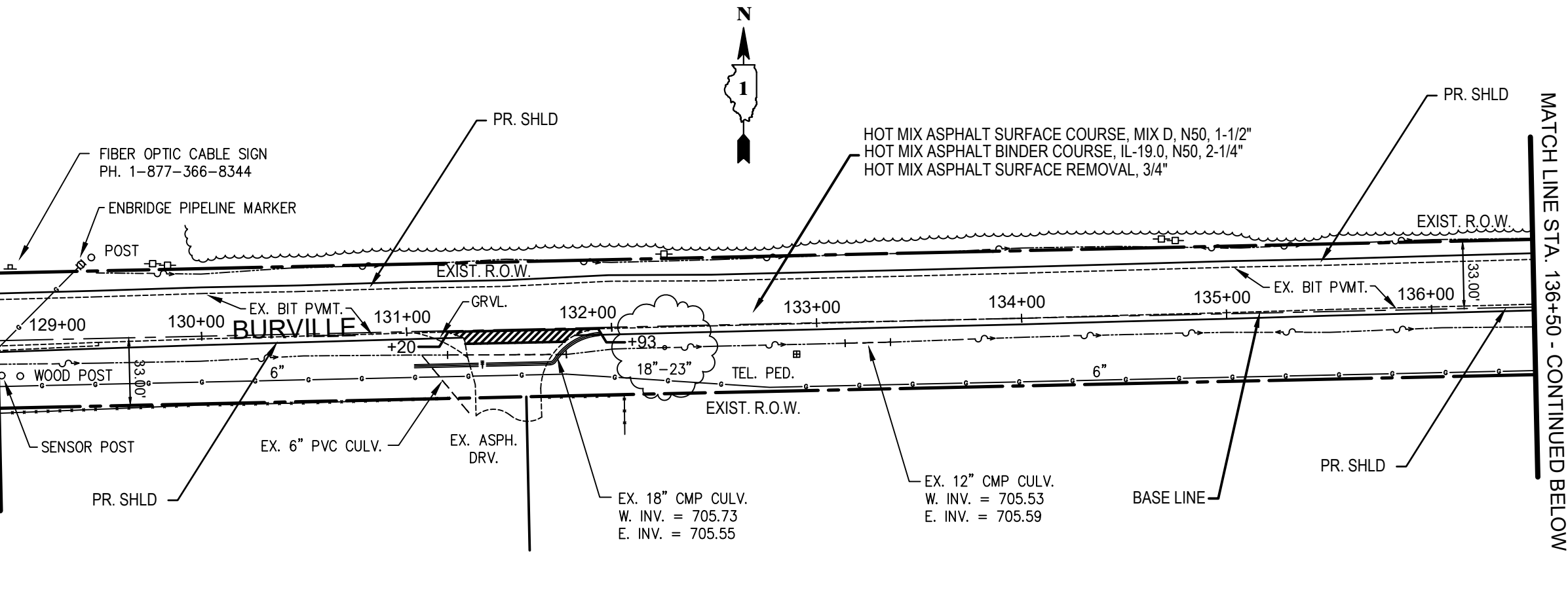
BURVILLE ROAD RESURFACING
 STA. 57+56 TO STA. 147+44
 PAVEMENT PLAN - STA. 111+00 TO 129+00

F.A. RITE	SECTION	COUNTY	TOTAL SHEETS	SHEET NO.
4305	16-00050-00-RS	WILL	19	10
FED. ROAD DIST. NO. 1 ILLINOIS		CONTRACT NO. 61F61		
FED. AID PROJECT:				

PAVEMENT PLAN LEGEND

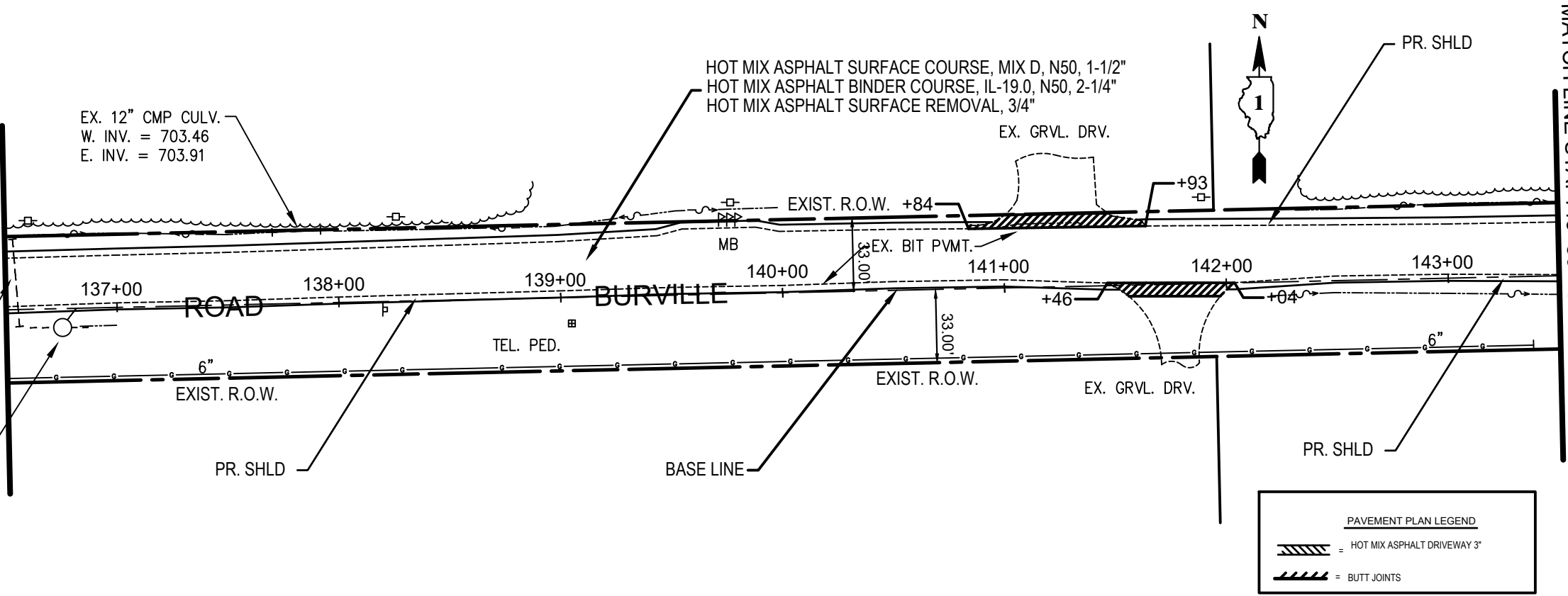
- = HOT MIX ASPHALT DRIVEWAY 3"
- = BUTT JOINTS

MATCH LINE STA. 129+00 - CONTINUED FROM SHEET 10



MATCH LINE STA. 136+50 - CONTINUED BELOW

MATCH LINE STA. 136+50 - CONTINUED FROM ABOVE



MATCH LINE STA. 143+50 - CONTINUED ON SHEET 12

PAVEMENT PLAN LEGEND	
	HOT MIX ASPHALT DRIVEWAY 3"
	BUTT JOINTS

TECH 3 Consulting Group, Inc.
 ENGINEERS SURVEYORS
 737 West Exchange St. Crete, IL 60417
 JOB NO. 14908 ph 708.672.4994 fax 708.672.3739
 ILLINOIS PROFESSIONAL DESIGN FIRM NO. 184-002235

USER NAME =	DESIGNED - PJC	REVISED - 11-19-18
	DRAWN - EGH	REVISED - 12-13-18
PLOT SCALE =	CHECKED - WJJS	REVISED -
PLOT DATE =	DATE -	REVISED -

STATE OF ILLINOIS
 DEPARTMENT OF TRANSPORTATION

BURVILLE ROAD RESURFACING
 STA. 57+56 TO STA. 147+44
 PAVEMENT PLAN - STA. 129+00 TO 143+50

F.A. RTE. 4305	SECTION 16-00050-00-RS	COUNTY WILL	TOTAL SHEETS 19	SHEET NO. 11
FED. ROAD DIST. NO. 1		ILLINOIS	CONTRACT NO. 61F61	
FED. AID PROJECT:				

SCALE: 1" = 30'

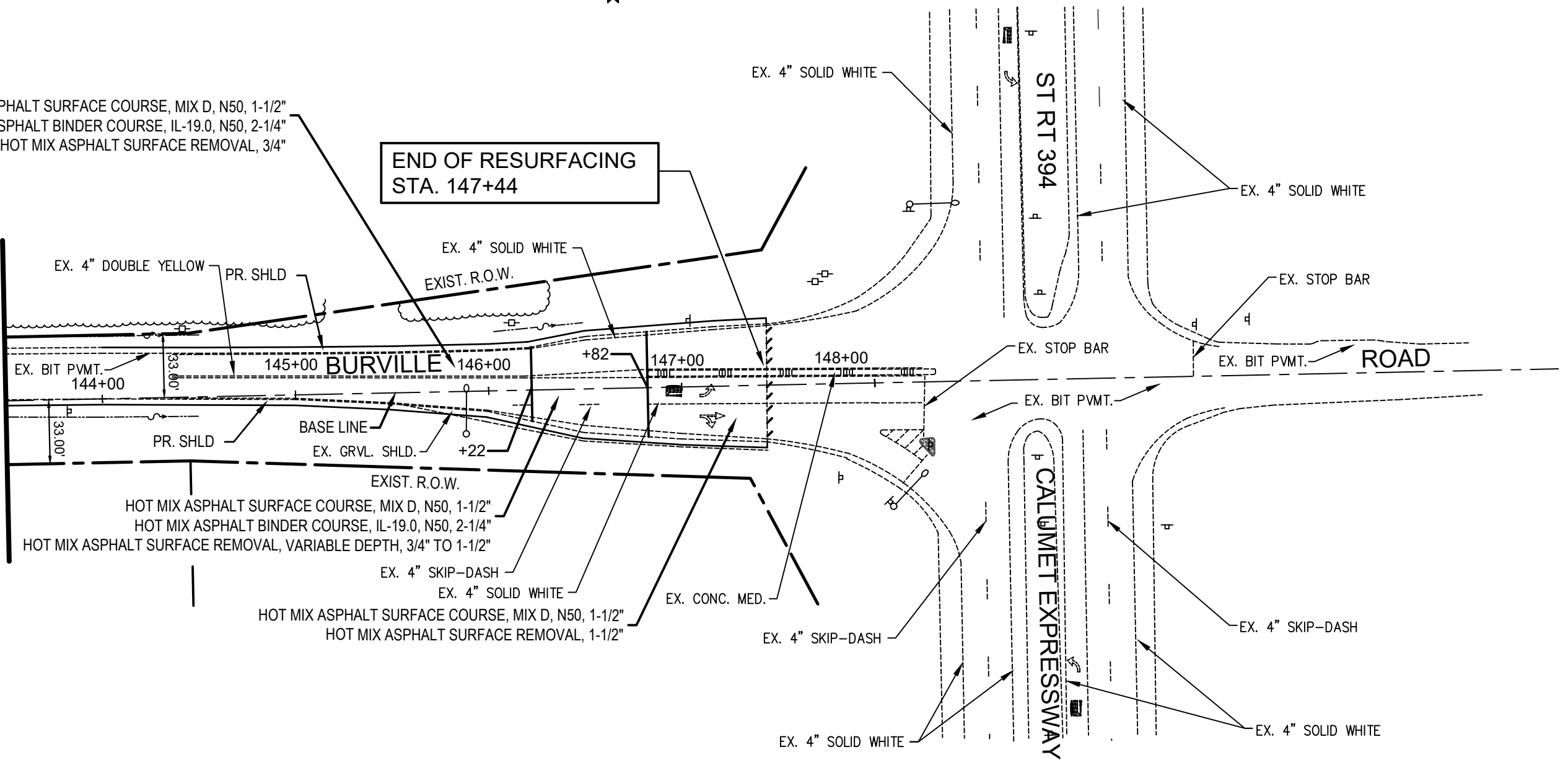
SHEET NO. OF SHEETS STA. TO STA.



HOT MIX ASPHALT SURFACE COURSE, MIX D, N50, 1-1/2"
 HOT MIX ASPHALT BINDER COURSE, IL-19.0, N50, 2-1/4"
 HOT MIX ASPHALT SURFACE REMOVAL, 3/4"

**END OF RESURFACING
 STA. 147+44**

MATCH LINE STA. 143+50 - CONTINUED FROM SHEET 11



HOT MIX ASPHALT SURFACE COURSE, MIX D, N50, 1-1/2"
 HOT MIX ASPHALT BINDER COURSE, IL-19.0, N50, 2-1/4"
 HOT MIX ASPHALT SURFACE REMOVAL, VARIABLE DEPTH, 3/4" TO 1-1/2"

HOT MIX ASPHALT SURFACE COURSE, MIX D, N50, 1-1/2"
 HOT MIX ASPHALT SURFACE REMOVAL, 1-1/2"

PAVEMENT PLAN LEGEND				
	=	EXISTING PAINT, PAVEMENT MARKING		
	=	HOT MIX ASPHALT DRIVEWAY 3"		
	=	BUTT JOINTS		

TECH 3 Consulting Group, Inc.
 ENGINEERS SURVEYORS
 737 West Exchange St. Crete, IL 60417
 JOB NO. 14908 ph 708.672.4894 fax 708.672.3739
 ILLINOIS PROFESSIONAL DESIGN FIRM NO. 184-002235

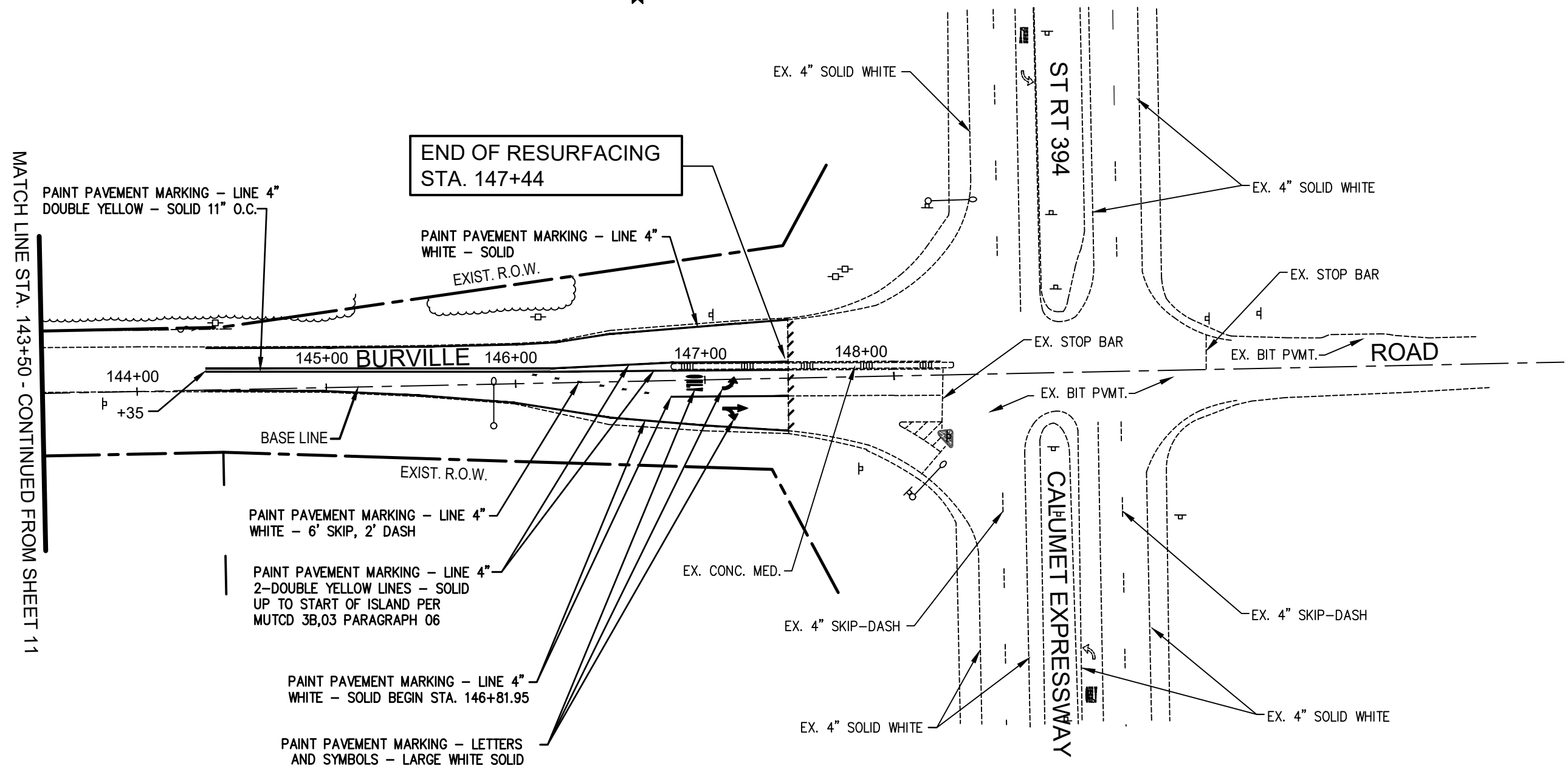
USER NAME =	DESIGNED - PJC	REVISED - 11-19-18
	DRAWN - EGH	REVISED - 12-13-18
PLOT SCALE =	CHECKED - WJS	REVISED -
PLOT DATE =	DATE -	REVISED -

STATE OF ILLINOIS
 DEPARTMENT OF TRANSPORTATION

BURVILLE ROAD RESURFACING
 STA. 57+56 TO STA. 147+44
 PAVEMENT PLAN - STA. 93+00 TO 111+00

F.A.U. RTE	SECTION	COUNTY	TOTAL SHEETS	SHEET NO.
4305	16-00050-00-RS	WILL	19	12
FED. ROAD DIST. NO. 1		ILLINOIS	CONTRACT NO. 61F61	
FED. AID PROJECT:				

SCALE: 1" = 30' SHEET NO. OF SHEETS STA. TO STA.



MATCH LINE STA. 143+50 - CONTINUED FROM SHEET 11

**END OF RESURFACING
STA. 147+44**

PAINT PAVEMENT MARKING - LINE 4"
DOUBLE YELLOW - SOLID 11" O.C.

PAINT PAVEMENT MARKING - LINE 4"
WHITE - SOLID
EXIST. R.O.W.

144+00
+35

145+00 BURVILLE 146+00

147+00

148+00

BASE LINE

EXIST. R.O.W.

PAINT PAVEMENT MARKING - LINE 4"
WHITE - 6" SKIP, 2' DASH

PAINT PAVEMENT MARKING - LINE 4"
2-DOUBLE YELLOW LINES - SOLID
UP TO START OF ISLAND PER
MUTCD 3B,03 PARAGRAPH 06

PAINT PAVEMENT MARKING - LINE 4"
WHITE - SOLID BEGIN STA. 146+81.95

PAINT PAVEMENT MARKING - LETTERS
AND SYMBOLS - LARGE WHITE SOLID

EX. 4" SOLID WHITE

EX. 4" SOLID WHITE

EX. STOP BAR

EX. STOP BAR

EX. BIT PVMT.

ROAD

EX. BIT PVMT.

EX. CONC. MED.

EX. 4" SKIP-DASH

EX. 4" SKIP-DASH

EX. 4" SOLID WHITE

EX. 4" SOLID WHITE

ST RT 394

CALUMET EXPRESSWAY

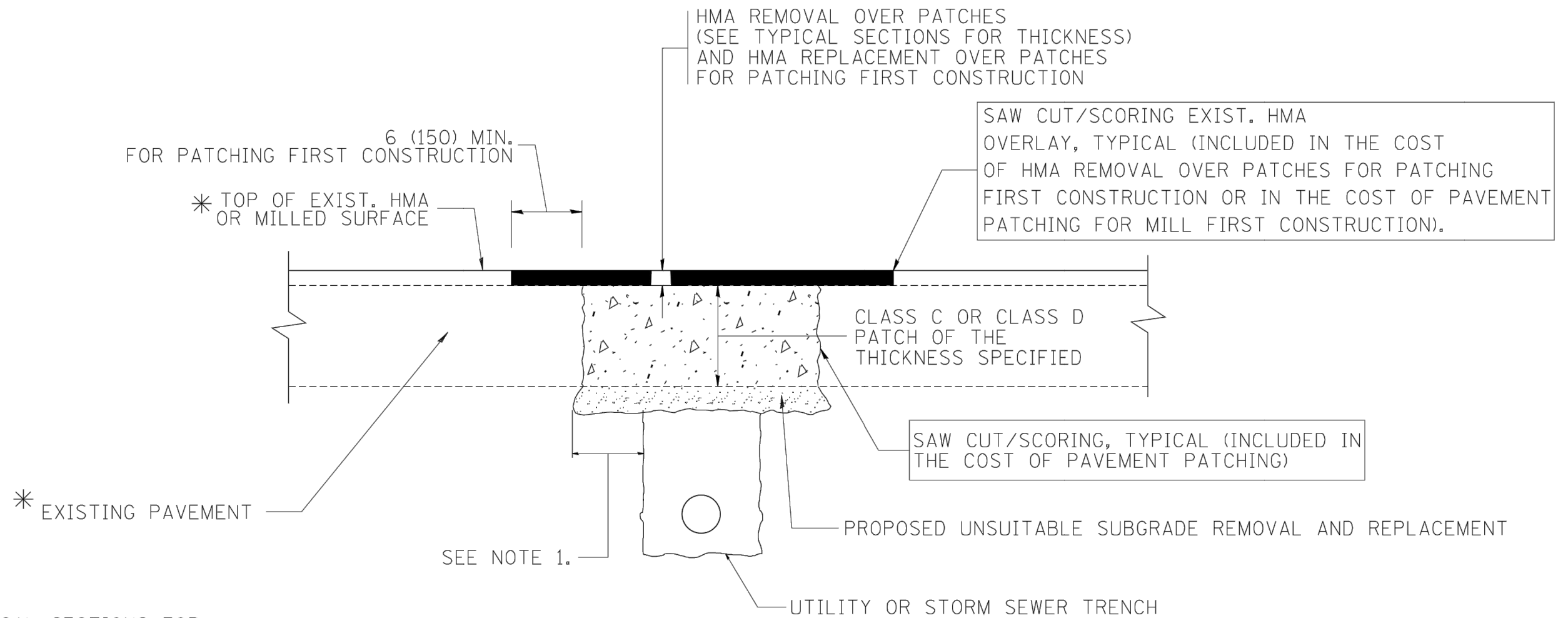
PAVEMENT PLAN LEGEND				
	=	PROPOSED PAINT, PAVEMENT MARKING		
	=	EXISTING PAINT, PAVEMENT MARKING		
	=	HOT MIX ASPHALT DRIVEWAY 3"		
	=	BUTT JOINTS		

TECH 3 Consulting Group, Inc. ENGINEERS SURVEYORS 717 West Exchange St. Chgo. IL 60617 JOB NO. 14908 ph 708.672.4994 fax 708.672.3739 ILLINOIS PROFESSIONAL DESIGN FIRM NO. 184-002235	USER NAME =	DESIGNED - PJC	REVISED - 11-19-18	STATE OF ILLINOIS DEPARTMENT OF TRANSPORTATION	BURVILLE ROAD RESURFACING STA. 57+56 TO STA. 147+44 PAVEMENT MARKING PLAN STA. 143+50 TO 147+44	F.A.U. RTE.	SECTION	COUNTY	TOTAL SHEETS	SHEET NO.
	PLOT SCALE =	DRAWN - EGH	REVISED - 12-13-18			4305	16-00050-00-RS	WILL	19	13
	PLOT DATE =	CHECKED - WJS	REVISED -			CONTRACT NO. 61F61				
		DATE -	REVISED -			FED. ROAD DIST. NO. 1 ILLINOIS FED. AID PROJECT:				

SCALE: 1" = 30'

SHEET NO. ? OF ?? SHEETS

STA. - TO STA. -



* SEE TYPICAL SECTIONS FOR THICKNESS AND MATERIALS

NOTES:

1. THE WIDTH OF THE FULL DEPTH PATCH OVER A TRENCH SHALL BE 12 (300) WIDER ON EACH SIDE OF THE TRENCH.
2. FOR METHOD OF MEASUREMENT AND BASIS OF PAYMENT, SEE RECURRING SPECIAL PROVISION "PATCHING WITH HOT-MIX ASPHALT OVERLAY REMOVAL".

SEQUENCE OF CONSTRUCTION (PATCHING FIRST)

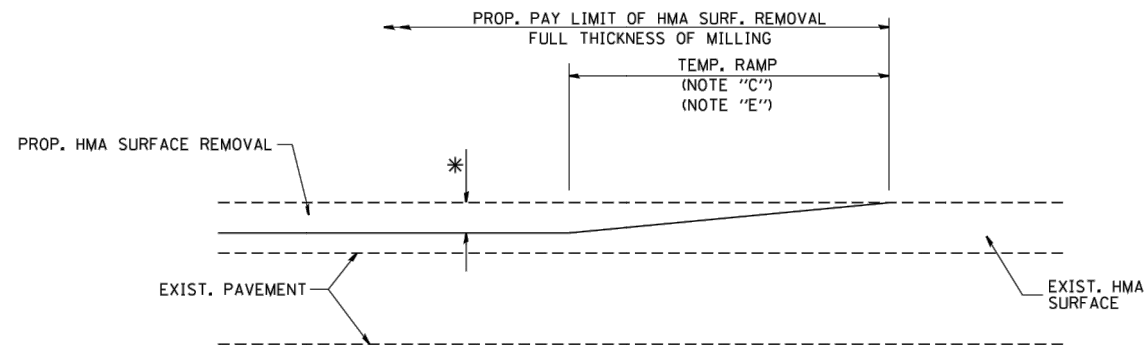
1. REMOVE THE EXISTING HMA MATERIAL OVER THE AREA TO BE PATCHED.
2. REMOVE AND REPLACE WITH CLASS C OR D PATCH.
3. REPLACE HMA MATERIAL OVER THE AREA TO BE PATCHED.

SEQUENCE OF CONSTRUCTION (MILLING FIRST)

1. MILL HMA FIRST IF THERE IS AT LEAST 4 1/2 INCHES OR MORE OF HMA MATERIAL ON TOP OF THE EXISTING PAVEMENT OR IF THE PAVEMENT IS FULL DEPTH HMA. A MINIMUM OF 2 INCHES OF HMA MATERIAL SHALL BE IN PLACE AFTER MILLING.
2. REMOVE AND REPLACE WITH FULL DEPTH CLASS D PATCHES TO TOP OF MILLED SURFACE.

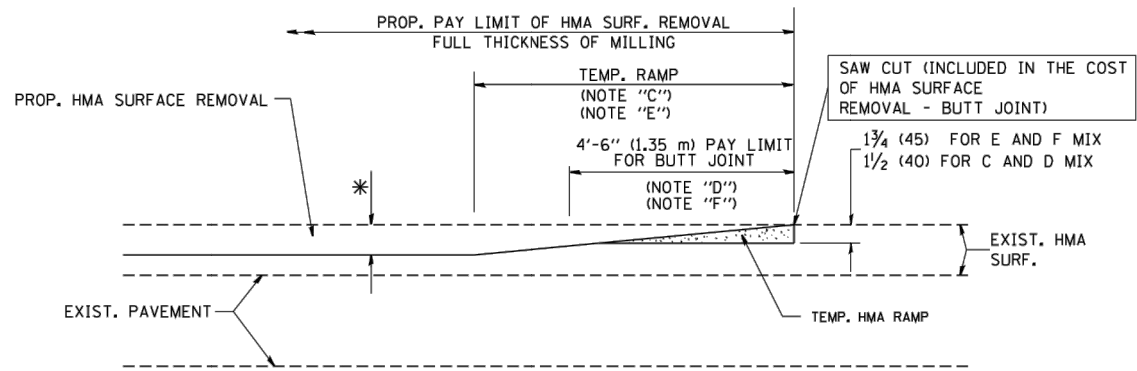
ALL DIMENSIONS ARE IN INCHES (MILLIMETERS) UNLESS OTHERWISE SHOWN.

FILE NAME = c:\projects\diststd22x34\bd22.dgn	USER NAME = bauerdl	DESIGNED - R. SHAH	REVISED - A. ABBAS 04-27-98	STATE OF ILLINOIS DEPARTMENT OF TRANSPORTATION	PAVEMENT PATCHING FOR HMA SURFACED PAVEMENT	F.A.U. RTE.	SECTION	COUNTY	TOTAL SHEETS	SHEET NO.	
	PLOT SCALE = 50.000' / IN.	DRAWN -	REVISED - R. BORO 01-01-07			4305	16-00050-00-RS	WILL	19	14	
	PLOT DATE = 10/27/2008	CHECKED -	REVISED - R. BORO 09-04-07			BD400-04 (BD-22)		CONTRACT NO. 61F61			
		DATE - 10-25-94	REVISED - K. ENG 10-27-08			SCALE: NONE		SHEET NO. 1 OF 1 SHEETS		STA. TO STA.	



MILLED TEMPORARY RAMP
(FOR BUTT JOINT AND HMA TAPER SEE DETAIL BELOW)

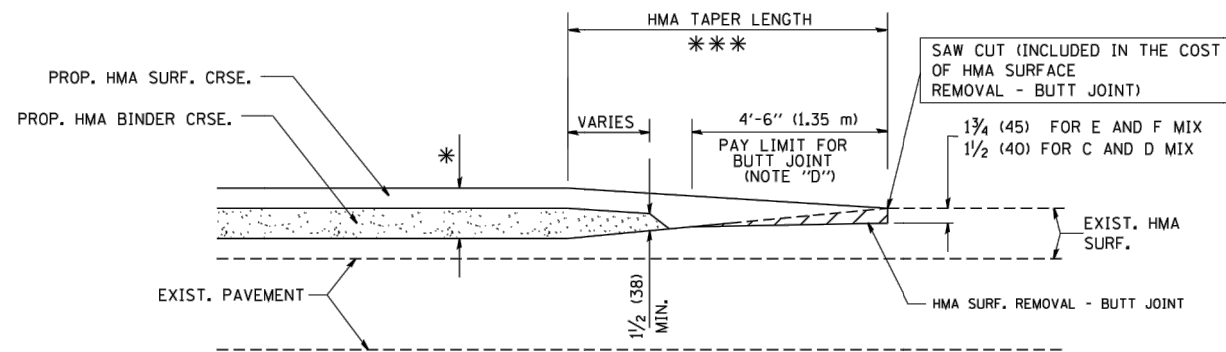
OPTION 1



HMA CONSTRUCTED TEMPORARY RAMP
(FOR BUTT JOINT AND HMA TAPER SEE DETAIL BELOW)

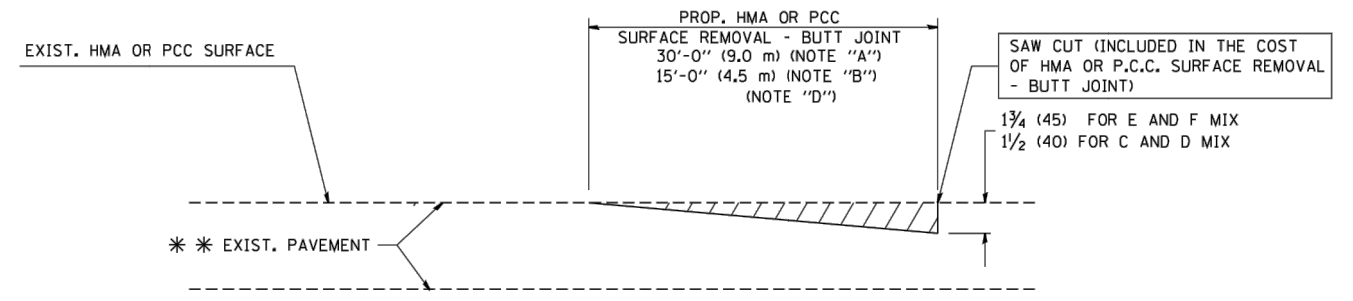
OPTION 2

TYPICAL TEMPORARY RAMP

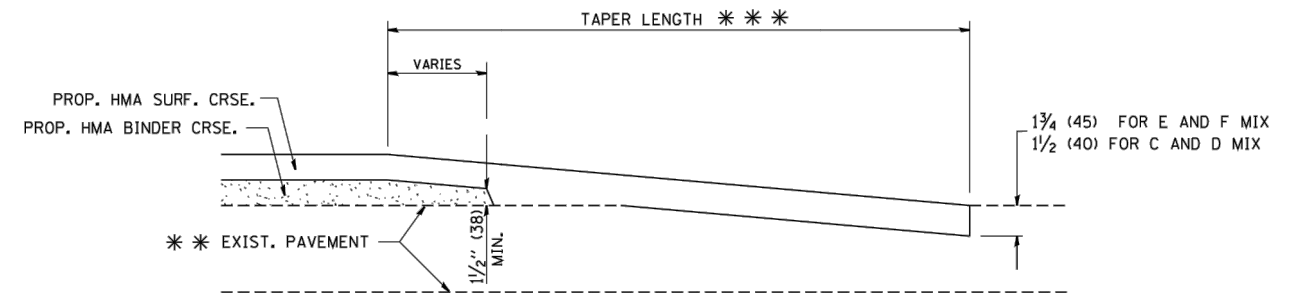


BUTT JOINT AND
HMA TAPER

**TYPICAL BUTT JOINT AND HMA TAPER
FOR MILLING AND RESURFACING**



BUTT JOINT DETAIL



HMA TAPER DETAIL

**TYPICAL BUTT JOINT AND HMA TAPER
FOR RESURFACING ONLY**

*** PC CONCRETE, HMA OR HMA RESURFACED PAVEMENT.

NOTES

- A: MAINLINE ROADWAYS AND MAJOR SIDE ROADS.
 - B: MINOR SIDE ROADS.
 - C: THE TEMP. RAMP SHALL BE CONSTRUCTED IMMEDIATELY UPON REMOVAL OF THE EXISTING HMA SURFACE.
 - D: THE BUTT JOINT SHALL BE CONSTRUCTED IMMEDIATELY PRIOR TO PLACING THE PROPOSED HMA COURSES.
 - E: TAPER THE TEMP. RAMP AT A RATE OF 3'-0" (900 mm) PER 1 INCH (25 mm) OF MILLING THICKNESS.
 - F: INSTALLATION AND REMOVAL OF THE 4'-6" (1.35 m) TEMP. RAMP IS INCLUDED IN COST OF HMA SURFACE REMOVAL - BUTT JOINT
 - G: SEE ARTICLE 406.08 AND 406.14 OF THE STANDARD SPECIFICATIONS FOR "HMA AND/OR PCC SURFACE REMOVAL, BUTT JOINT".
- * SEE TYPICAL SECTIONS FOR MILLING THICKNESS.
- *** 20'-0" (6.1 m) PER 1 (25) RESURFACING (NOTE "A")
10'-0" (3.0 m) PER 1 (25) RESURFACING (NOTE "B")

BASIS OF PAYMENT:

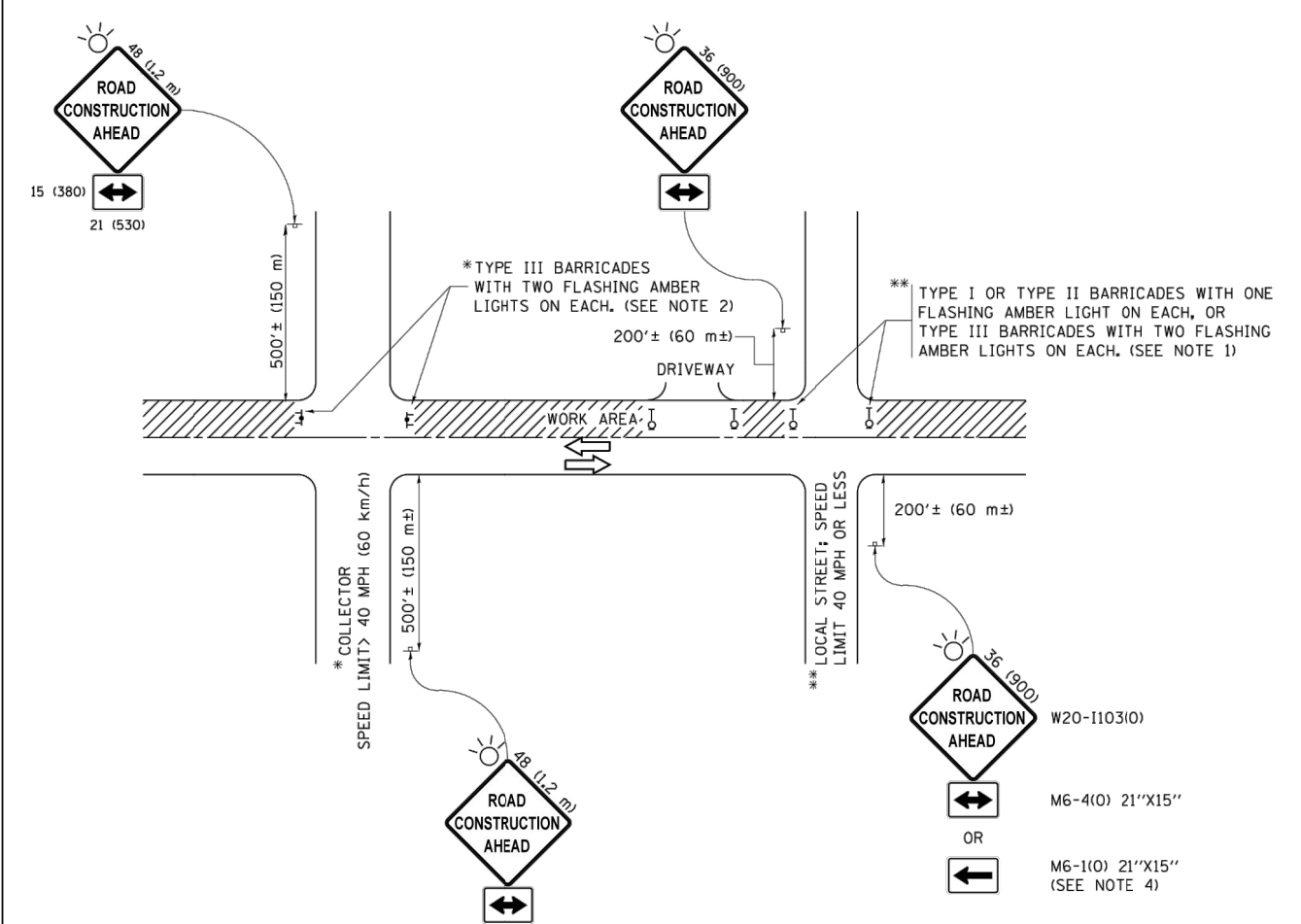
THE BUTT JOINT WILL BE PAID FOR AT THE CONTRACT UNIT PRICE PER SQUARE YARD (SQUARE METER) FOR "HOT-MIX ASPHALT SURFACE REMOVAL - BUTT JOINT" OR FOR "PORTLAND CEMENT CONCRETE SURFACE REMOVAL - BUTT JOINT".

ALL DIMENSIONS ARE IN INCHES (MILLIMETERS) UNLESS OTHERWISE SHOWN.

FILE NAME = W:\diststd\22x34\bd32.dgn	USER NAME = gegl1enobt	DESIGNED - M. DE YONG	REVISED - R. SHAH 10-25-94
		DRAWN -	REVISED - A. ABBAS 03-21-97
	PLOT SCALE = 500.0000 ' / IN.	CHECKED -	REVISED - M. GOMEZ 04-06-01
	PLOT DATE = 1/4/2008	DATE - 06-13-90	REVISED - R. BORO 01-01-07

**STATE OF ILLINOIS
DEPARTMENT OF TRANSPORTATION**

BUTT JOINT AND HMA TAPER DETAILS		F.A.LL RTE. 4305	SECTION 16-00050-00-RS	COUNTY WILL	TOTAL SHEETS 19	SHEET NO. 15
SCALE: NONE	SHEET NO. 1 OF 1 SHEETS	STA.	TO STA.		CONTRACT NO. 61F61	
FED. ROAD DIST. NO. 1 ILLINOIS FED. AID PROJECT						



NOTES:

1. SIDE ROAD WITH A SPEED LIMIT OF 40 MPH (60 km/h) OR LESS AS SHOWN ON THE DRAWING AND AS DIRECTED BY THE ENGINEER:
 - a) ONE "ROAD CONSTRUCTION AHEAD" SIGN 36 x 36 (900x900) WITH A FLASHER MOUNTED ON IT APPROXIMATELY 200' (60 m) IN ADVANCE OF THE MAIN ROUTE.
 - b) THE CLOSED PORTION OF THE MAIN ROUTE SHALL BE PROTECTED BY BLOCKING WITH TYPE I, TYPE II OR TYPE III BARRICADES, 1/3 OF THE CROSS SECTION OF THE CLOSED PORTION.
2. SIDE ROAD WITH A SPEED LIMIT GREATER THAN 40 MPH (60 km/h) AS SHOWN ON THE DRAWING AND AS DIRECTED BY THE ENGINEER:
 - a) ONE "ROAD CONSTRUCTION AHEAD" SIGN 48 x 48 (1.2 m x 1.2 m) WITH A FLASHER MOUNTED ON IT APPROXIMATELY 500' (150 m) IN ADVANCE OF THE MAIN ROUTE.
 - b) THE CLOSED PORTION OF THE MAIN ROUTE SHALL BE PROTECTED BY BLOCKING WITH TYPE III BARRICADES, 1/2 OF THE CROSS SECTION OF THE CLOSED PORTION.
3. CONES MAY BE SUBSTITUTED FOR BARRICADES OR DRUMS AT HALF THE SPACING DURING DAY OPERATIONS. CONES SHALL BE A MINIMUM OF 28 (710) IN HEIGHT.
4. WHEN THE SIDE ROAD LIES BETWEEN THE BEGINNING OF THE MAINLINE SIGNING AND THE WORK ZONE, A SINGLE HEADED ARROW (M6-1) SHALL BE USED IN LIEU OF THE DOUBLE HEADED ARROW (M6-4).
5. WHEN WORK IS BEING PERFORMED ON A SIDE ROAD OR DRIVEWAY, FOLLOW THE APPLICABLE STANDARD(S). THE DIRECTIONAL ARROW (M6-1 OR M6-4) SHALL BE COVERED OR REMOVED WHEN NO LONGER CONSISTENT WITH THE TRAFFIC CONTROL SET-UP.
6. ADVANCE WARNING SIGNS ARE TO BE OMITTED ON DRIVEWAYS UNLESS OTHERWISE SPECIFIED IN THE PLANS OR BY THE ENGINEER.
7. THE TRAFFIC CONTROL AND PROTECTION FOR SIDE ROADS, INTERSECTIONS, AND DRIVEWAYS SHALL BE INCLUDED IN THE COST OF SPECIFIED TRAFFIC CONTROL STANDARDS OR ITEMS.

All dimensions are in inches (millimeters) unless otherwise shown.

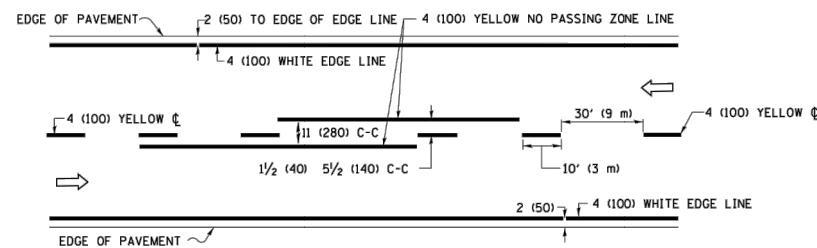
FILE NAME =	USER NAME = f00temj	DESIGNED - L.H.A.	REVISED - A. HOUSEH 10-15-96
pe\1\084EBIDINTEG\illinois.gov\PMIDOT\Documents\DOT Offices\District 1\Projects\Dist	Documents\DOT Offices\District 1\Projects\Dist	DRAWN	REVISED - T. RAMMACHER 01-06-00
Default	PLOT SCALE = 50.000' / in.	CHECKED -	REVISED - A. SCHUETZE 07-01-13
	PLOT DATE = 9/15/2016	DATE - 06-89	REVISED - A. SCHUETZE 09-15-16

**STATE OF ILLINOIS
DEPARTMENT OF TRANSPORTATION**

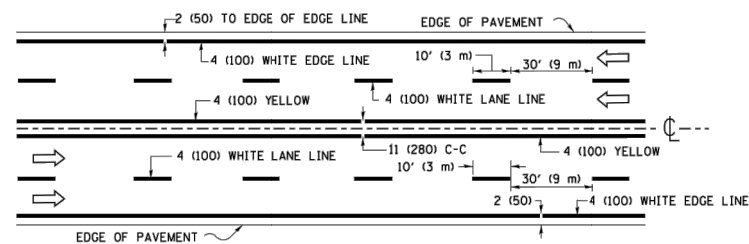
**TRAFFIC CONTROL AND PROTECTION FOR
SIDE ROADS, INTERSECTIONS, AND DRIVEWAYS**

SCALE: NONE SHEET 1 OF 1 SHEETS STA. TO STA.

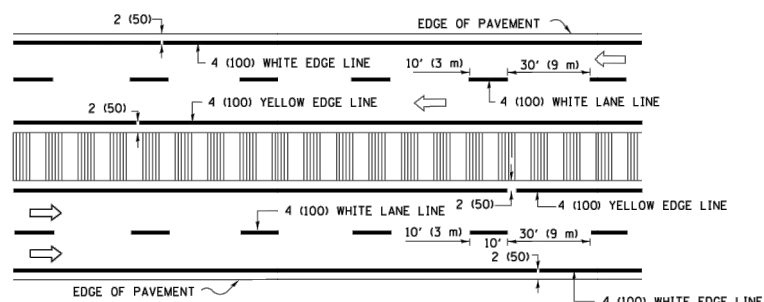
F.A.U. RTE.	SECTION	COUNTY	TOTAL SHEETS	SHEET NO.
4305	16-00050-00-RS	WILL	19	16
TC-10			CONTRACT NO. 61F61	
ILLINOIS FED. AID PROJECT				



2-LANE ROADWAY

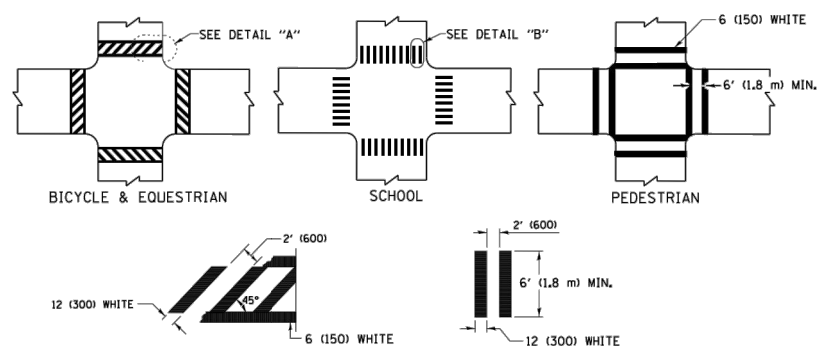


MULTI-LANE UNDIVIDED



MULTI-LANE DIVIDED WITH MEDIAN

TYPICAL LANE AND EDGE LINE MARKING

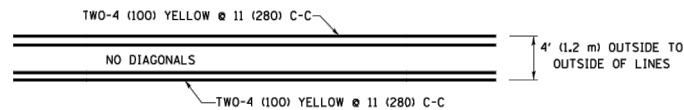


DETAIL "A"

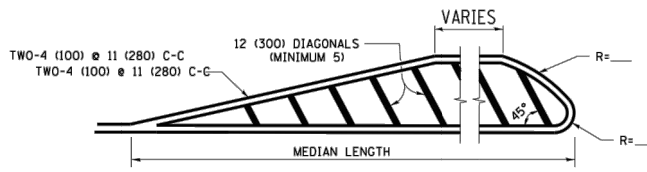
DETAIL "B"

TYPICAL CROSSWALK MARKING

* MARKINGS SHALL BE INSTALLED PARALLEL TO THE CENTERLINE OF THE ROAD WHICH IT CROSSES

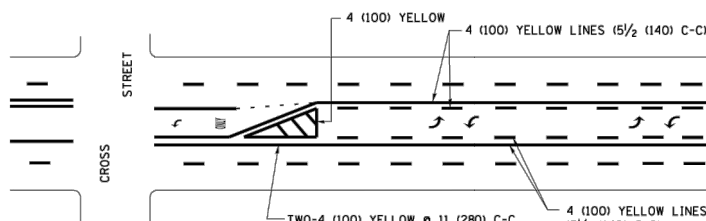


4' (1.2 m) WIDE MEDIANS ONLY



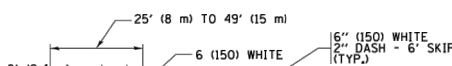
MEDIANS OVER 4' (1.2 m) WIDE

DIAGONAL LINE SPACING: 50' (15 m) C-C (LESS THAN 30MPH (50 km/h))
75' (25 m) C-C 30MPH (50 km/h) TO 45MPH (70 km/h)
150' (45 m) C-C (MORE THAN 45MPH (70 km/h))



MEDIAN WITH TWO-WAY LEFT TURN LANE

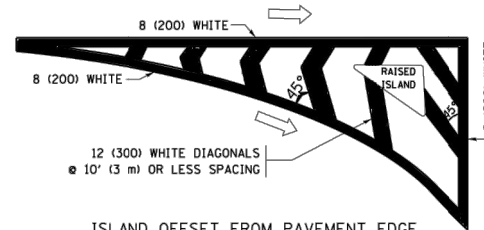
TYPICAL PAINTED MEDIAN MARKING



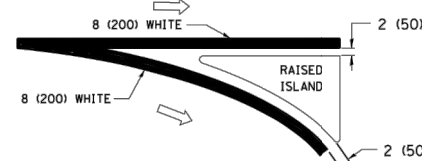
TYPICAL LEFT (OR RIGHT) TURN LANE

TYPICAL TURN LANE MARKING

FULL SIZE LETTERS 8' (2.4 m) AND ARROWS SHALL BE USED.
AREA = 15.6 SQ. FT. (1.5 m²) ONLY AREA = 20.8 SQ. FT. (1.9 m²)
* TURN LANES IN EXCESS OF 400' (120 m) IN LENGTH MAY HAVE AN ADDITIONAL SET OF ARROW - "ONLY" INSTALLED MIDWAY BETWEEN THE OTHER TWO SETS OF ARROW - "ONLY".

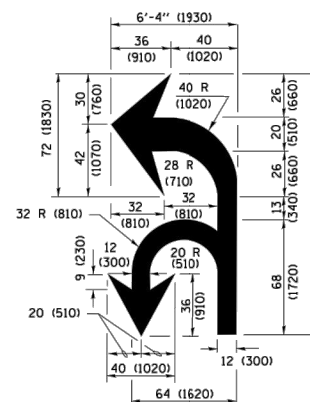


ISLAND OFFSET FROM PAVEMENT EDGE

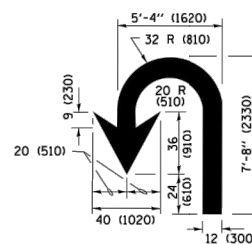


ISLAND AT PAVEMENT EDGE

TYPICAL ISLAND MARKING



COMBINATION LEFT AND U-TURN



U-TURN

LANE REDUCTION TRANSITION

* LANE REDUCTION ARROWS REQUIRED AT SPEEDS OF 45 MPH OR GREATER OR WHEN SPECIFIED IN PLANS.

D(FT)	SPEED LIMIT
345	30
425	35
500	40
580	45
665	50
750	55

TYPE OF MARKING	WIDTH OF LINE	PATTERN	COLOR	SPACING /REMARKS
CENTERLINE ON 2 LANE PAVEMENT	4 (100)	SKIP-DASH	YELLOW	10' (3 m) LINE WITH 30' (9 m) SPACE
CENTERLINE ON MULTI-LANE UNDIVIDED PAVEMENT	2 @ 4 (100)	SOLID	YELLOW	11 (280) C-C
NO PASSING ZONE LINES: FOR ONE DIRECTION FOR BOTH DIRECTIONS	4 (100) 2 @ 4 (100)	SOLID SOLID	YELLOW YELLOW	5/2 (140) C-C FROM SKIP-DASH CENTERLINE 11 (280) C-C OMIT SKIP-DASH CENTERLINE BETWEEN
LANE LINES (EXTENSIONS OF CENTER, LANE OR TURN LANE MARKINGS)	4 (100) 5 (125) ON FREEWAYS	SKIP-DASH SKIP-DASH	WHITE WHITE	10' (3 m) LINE WITH 30' (9 m) SPACE
DOTTED LINES (EXTENSIONS OF CENTER, LANE OR TURN LANE MARKINGS)	SAME AS LINE BEING EXTENDED	SKIP-DASH	SAME AS LINE BEING EXTENDED	2' (600) LINE WITH 6' (1.8 m) SPACE
EDGE LINES	4 (100)	SOLID	YELLOW-LEFT WHITE-RIGHT	OUTLINE MEDIANS IN YELLOW
TURN LANE MARKINGS	6 (150) LINE; FULL SIZE LETTERS & SYMBOLS (8' (2.4m))	SOLID	WHITE	SEE TYPICAL TURN LANE MARKING DETAIL
TWO WAY LEFT TURN MARKING	2 @ 4 (100) EACH DIRECTION 8' (2.4m) LEFT ARROW	SKIP-DASH AND SOLID IN PAIRS	YELLOW WHITE	10' (3 m) LINE WITH 30' (9 m) SPACE FOR SKIP-DASH; 5/2 (140) C-C BETWEEN SOLID LINE AND SKIP-DASH LINE SEE TYPICAL TWO-WAY LEFT TURN MARKING DETAIL
CROSSWALK LINES (PEDESTRIAN) A. DIAGONALS (BIKE & EQUESTRIAN) B. LONGITUDINAL BARS (SCHOOL)	2 @ 6 (150) 12 (300) @ 45° 12 (300) @ 90°	SOLID SOLID SOLID	WHITE WHITE WHITE	NOT LESS THAN 6' (1.8 m) APART 2' (600) APART 2' (600) APART SEE TYPICAL CROSSWALK MARKING DETAILS.
STOP LINES	24 (600)	SOLID	WHITE	PLACE 4' (1.2 m) IN ADVANCE OF AND PARALLEL TO CROSSWALK, IF PRESENT. OTHERWISE, PLACE AT DESIRED STOPPING POINT. PARALLEL TO CROSSROAD CENTERLINE, WHERE POSSIBLE
PAINTED MEDIANS	2 @ 4 (100) WITH 12 (300) DIAGONALS @ 45° NO DIAGONALS USED FOR 4' (1.2 m) WIDE MEDIANS	SOLID	YELLOW; TWO WAY TRAFFIC WHITE; ONE WAY TRAFFIC	11 (280) C-C FOR THE DOUBLE LINE SEE TYPICAL PAINTED MEDIAN MARKING.
GORE MARKING AND CHANNELIZING LINES	8 (200) WITH 12 (300) DIAGONALS @ 45°	SOLID	WHITE	DIAGONALS: 15' (4.5 m) C-C (LESS THAN 30MPH (50 km/h)) 20' (6 m) C-C 30MPH (50 km/h) TO 45MPH (70 km/h) 30' (9 m) C-C (OVER 45MPH (70 km/h))
RAILROAD CROSSING	24 (600) TRANSVERSE LINES; "RR" 15' (4.5 m) LETTERS; 16 (400) LINE FOR "X"	SOLID	WHITE	SEE STATE STANDARD 780001 AREA OF: "R"=3.6 SQ. FT. (0.33 m ²) EACH "X"=54.0 SQ. FT. (5.0 m ²)
SHOULDER DIAGONALS (REQUIRED FOR SHOULDERS ≥ 8')	12 (300) @ 45°	SOLID	WHITE - RIGHT YELLOW - LEFT	50' (15 m) C-C (LESS THAN 30MPH (50 km/h)) 75' (25 m) C-C (30 MPH (50 km/h) TO 45MPH (70 km/h)) 150' (45 m) C-C (OVER 45MPH (70 km/h))
U TURN ARROW	SEE DETAIL	SOLID	WHITE	16.3 SF
2 ARROW COMBINATION LEFT AND U TURN	SEE DETAIL	SOLID	WHITE	30.4 SF

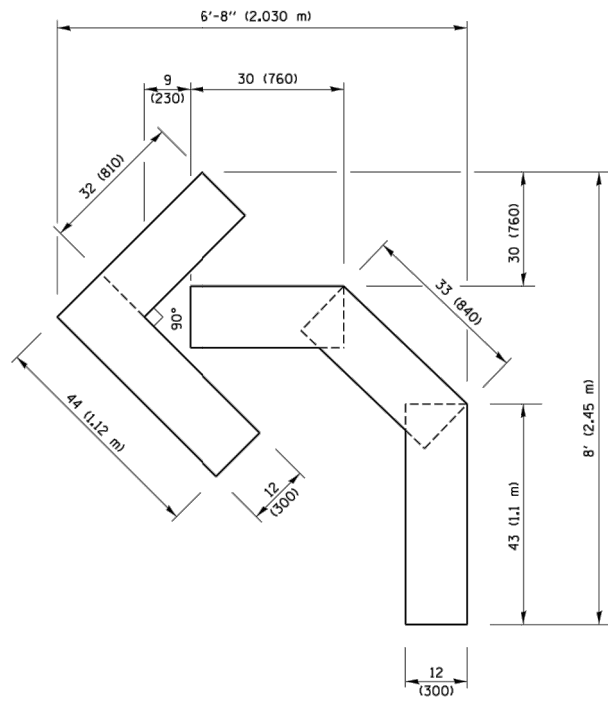
FOR FURTHER DETAILS ON PAVEMENT MARKING REFER TO STANDARD SPECIFICATIONS FOR ROAD AND BRIDGE CONSTRUCTION AND STATE STANDARD 780001.

All dimensions are in inches (millimeters) unless otherwise shown.

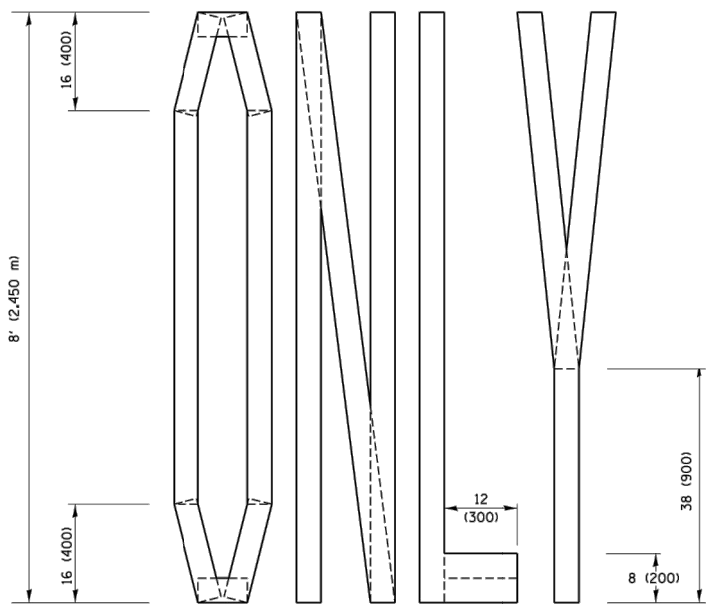
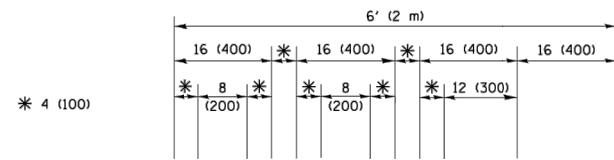
FILE NAME =	USER NAME = foatemj	DESIGNED - EVERS	REVISED - C. JUCIUS 09-09-09
pwt\11L084EBIDINTEG\111inois.gov\PWIDOT\Documents\NIDOT Offices\District 1\Projects\District 1\CADData\CADsheets\13.dgn		CHECKED -	REVISED - C. JUCIUS 07-01-13
Default	PLOT SCALE = 50.0000' / 1 in.	DATE - 03-19-90	REVISED - C. JUCIUS 12-21-15
	PLOT DATE = 4/13/2016		REVISED - C. JUCIUS 04-12-16

**STATE OF ILLINOIS
DEPARTMENT OF TRANSPORTATION**

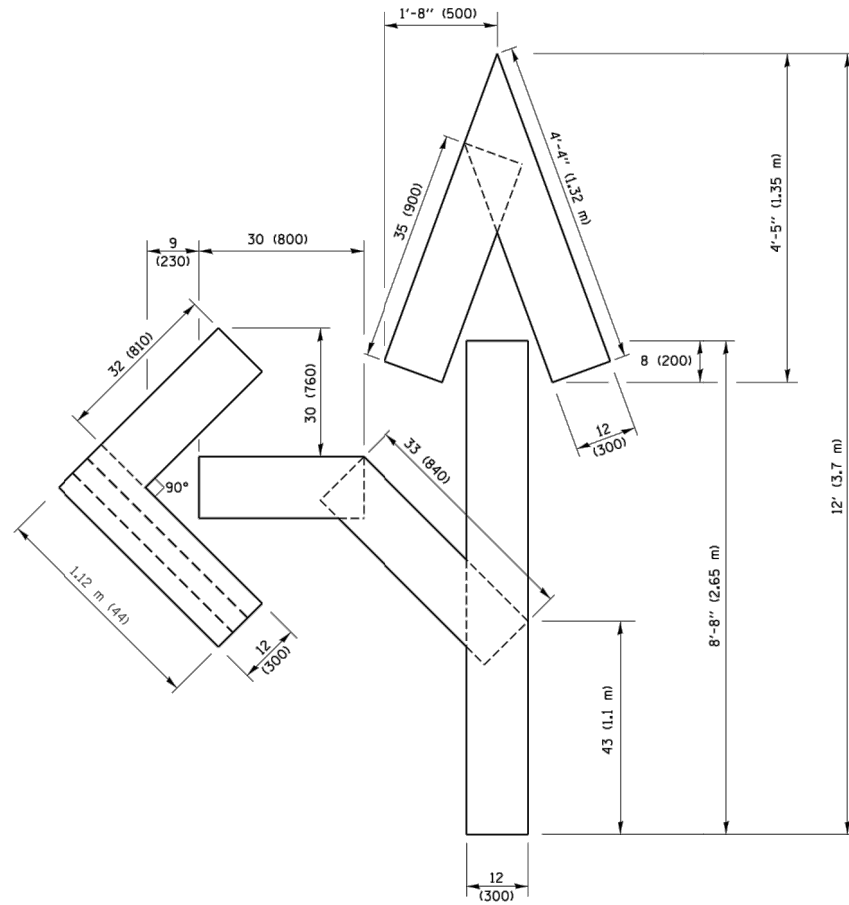
DISTRICT ONE				F.A.U. NO.	SECTION	COUNTY	TOTAL SHEETS	SHEET NO.
TYPICAL PAVEMENT MARKINGS				4305	16-00050-00-RS	WILL	19	17
SCALE: NONE SHEET 1 OF 1 SHEETS STA. TO STA.				TC-13		CONTRACT NO. 61F61		
				ILLINOIS FED. AID PROJECT				



QUANTITY
 4 (100) LINE = 45.5 ft. (13.9 m)
 15.2 sq. ft. (1.41 sq. m)



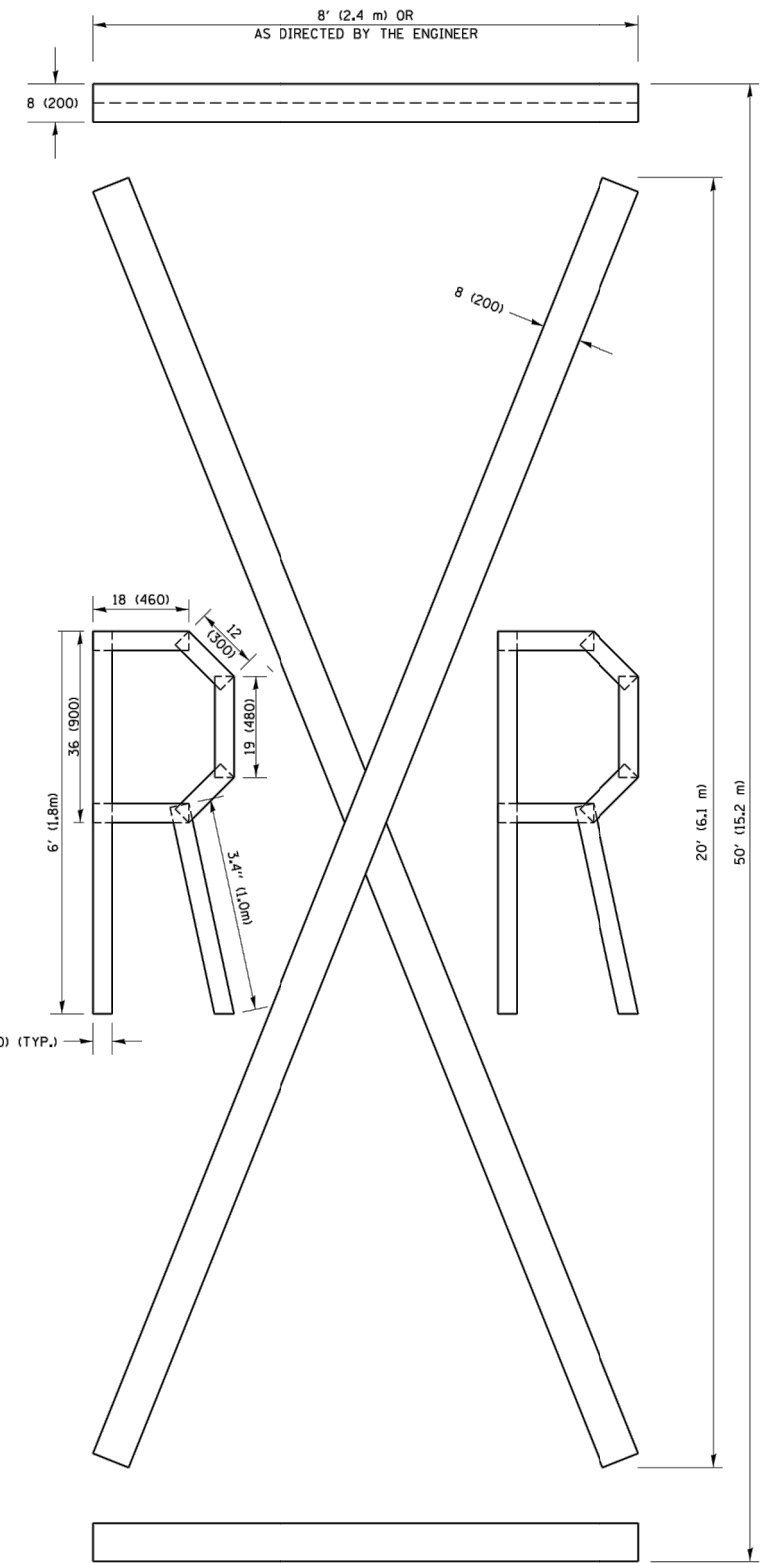
QUANTITY
 4 (100) LINE = 64.1 ft. (19.5 m)
 21.4 sq. ft. (1.99 sq. m)



QUANTITY
 4 (100) LINE = 82.5 ft. (25.1 m)
 27.5 sq. ft. (2.53 sq. m)

NOTE:

ALL QUANTITIES OF PLACEMENT ARE REPRESENTED IN LINEAR FEET OF 4" LINES TO MATCH THE 4" TEMPORARY TAPE PAY ITEM AND REPRESENTS THE TOTAL QUANTITY OF 4" TAPE REQUIRED.



QUANTITY
 4 (100) LINE = 225.9 ft. (68.9 m)
 75.3 sq. ft. (6.99 sq. m)

All dimensions are in inches (millimeters) unless otherwise shown.

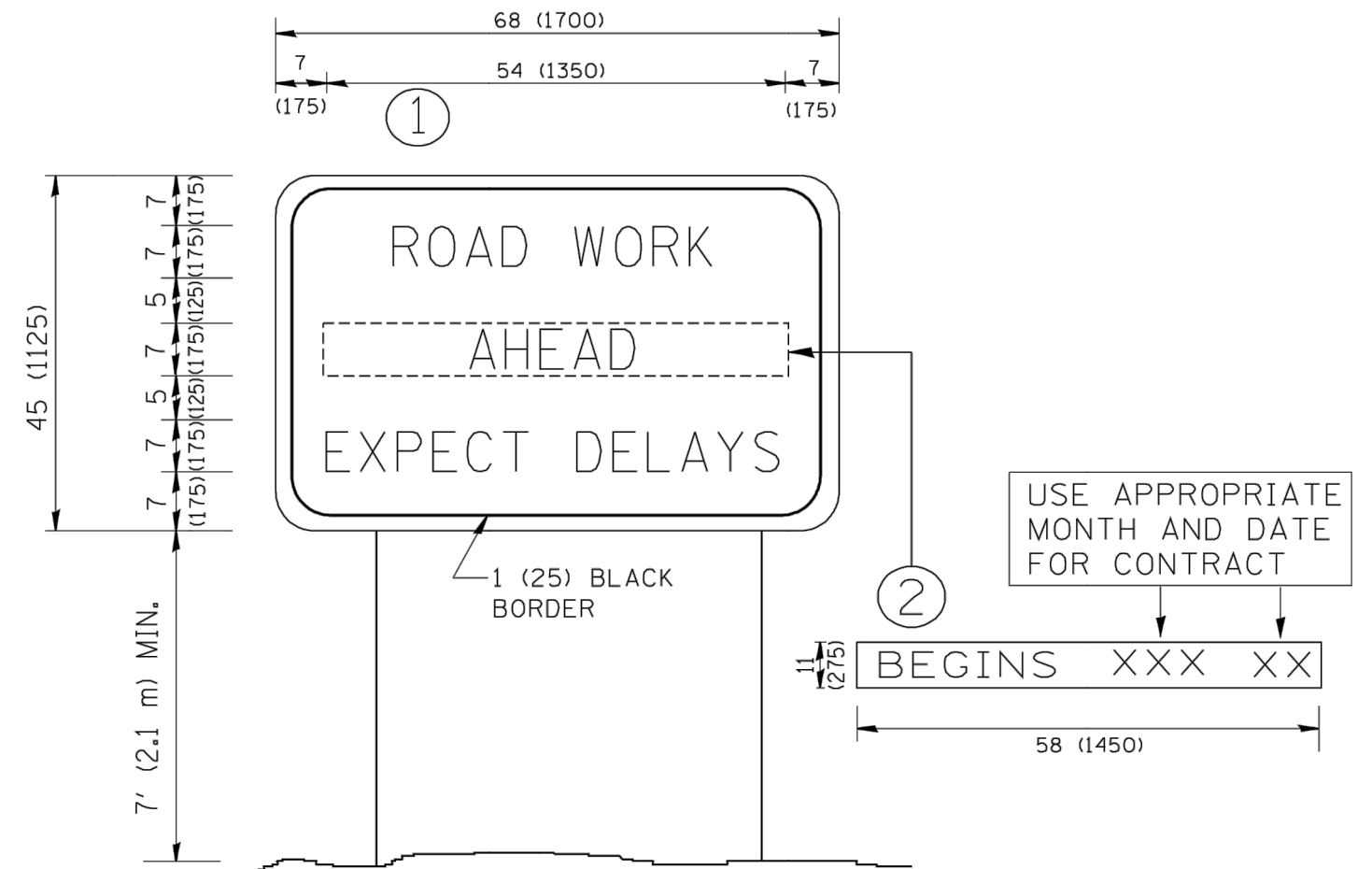
FILE NAME =	USER NAME = foatemj	DESIGNED -	REVISED - T. RAMMACHER 03-02-98
pwc:\IL\084EBID\INTEG\Illinois.gov\PI\DOT\Documents\DOT Offices\District 1\Projects\Dist 6\DRAWN\CADData\CADsheets\c16.dgn		CHECKED -	REVISED - E. GOMEZ 08-28-00
		DATE - 09-18-94	REVISED - E. GOMEZ 08-28-00
			REVISED - A. SCHUETZE 09-15-16

**STATE OF ILLINOIS
 DEPARTMENT OF TRANSPORTATION**

SHORT TERM PAVEMENT MARKING LETTERS AND SYMBOLS

SCALE: NONE SHEET NO. 1 OF 1 SHEETS STA. TO STA.

F.A.L. RTE.	SECTION	COUNTY	TOTAL SHEETS	SHEET NO.
4305	16-00050-00-RS	WILL	19	18
TC-16		CONTRACT NO. 61F61		
FED. ROAD DIST. NO. 1 ILLINOIS FED. AID PROJECT				



NOTES:

1. USE BLACK LETTERING ON ORANGE BACKGROUND.
2. ERECT SIGNS IN ADVANCE OF THE LOCATION FOR THE "ROAD CONSTRUCTION AHEAD" SIGN AT LOCATIONS AS DIRECTED BY THE ENGINEER.
3. ERECT SIGN ① WITH INSTALLED PANEL ② ONE WEEK PRIOR TO THE START OF CONSTRUCTION.
4. REMOVE PANEL ② SOON AFTER THE START OF CONSTRUCTION.
5. SEE SPECIAL PROVISION FOR "TEMPORARY INFORMATION SIGNING" FOR ADDITIONAL INFORMATION.
6. ONE SIGN ASSEMBLY EQUALS 25.70 SQ. FT. (2.3 SQ. M.)
7. SHALL BE PAID FOR AS TEMPORARY INFORMATION SIGNING.

ALL DIMENSIONS ARE IN INCHES (MILLIMETERS) UNLESS OTHERWISE SHOWN.

FILE NAME = W:\diststd\22x34\to22.dgn	USER NAME = geglianobt	DESIGNED -	REVISED - R. MIRS 09-15-97	STATE OF ILLINOIS DEPARTMENT OF TRANSPORTATION	ARTERIAL ROAD INFORMATION SIGN			F.A. RTE. = 4305	SECTION 16-00050-00-RS	COUNTY WILL	TOTAL SHEETS 19	SHEET NO. 19
	PLOT SCALE = 50,000 ' / IN.	DRAWN -	REVISED - R. MIRS 12-11-97		SCALE: NONE	SHEET NO. 1	OF 1 SHEETS	STA.	TO STA.	TC-22 CONTRACT NO. 61F61		
	PLOT DATE = 1/4/2008	CHECKED -	REVISED - T. RAMMACHER 02-02-99		FED. ROAD DIST. NO. 1 ILLINOIS FED. AID PROJECT							
		DATE -	REVISED - C. JUCIUS 01-31-07									