

**INDEX TO SHEETS**

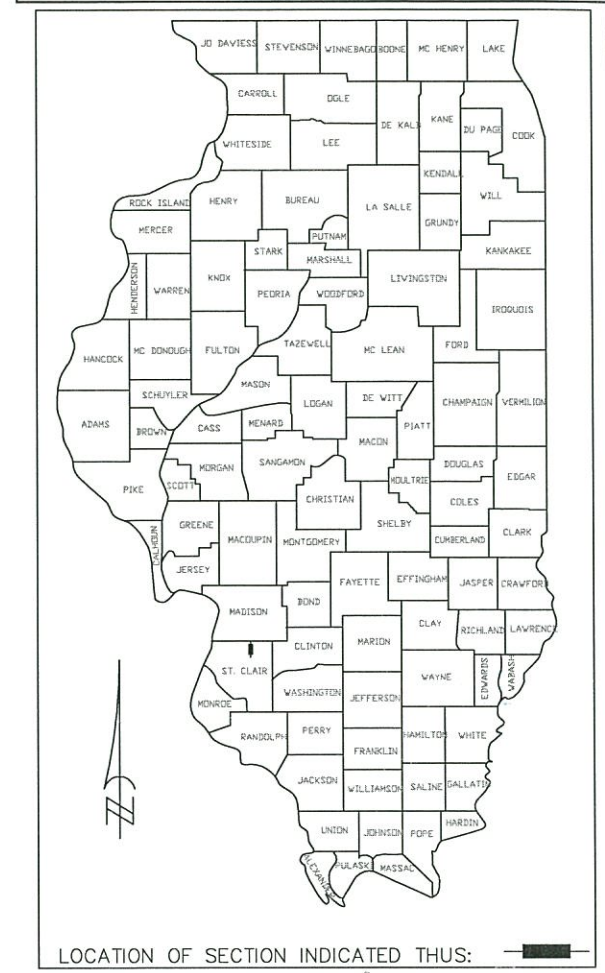
**03-08-2019 LETTING ITEM 162**

- 1 COVER SHEET
- 2 SUMMARY OF QUANTITIES AND GENERAL NOTES
- 3-4 TYPICAL SECTIONS
- 5 PAVEMENT, SHOULDER AND RRPMS SCHEDULE
- 6-7 PAVEMENT MARKING SCHEDULE
- 8 MISCELLANEOUS DETAILS

STATE OF ILLINOIS  
DEPARTMENT OF TRANSPORTATION

PLANS FOR PROPOSED  
SURFACE TRANSPORTATION PROGRAM  
FAU 9175 AND FAS ROUTE 1937 SCOTT-TROY RD. (C.H. 61)  
SECTION 15-00253-13-RS  
PROJECT NO. BKMI(299)  
C-98-032-19  
ST CLAIR COUNTY

FAU ROUTE	FAS ROUTE	SECTION NO.	COUNTY	SHEET OF SHEETS
9175	1937	15-00253-13-RS	ST. CLAIR	1 OF 8
STA. 17+14 TO STA. 268+60				
PROJECT NO. BKMI(299)			CONTRACT #97685	



LOCATION OF SECTION INDICATED THIS:

9/26, 2018

These plans were prepared by me or by a full-time member of my staff working under my personal supervision.

*Norman Etling*

Norman Etling, PE  
County Engineer  
License Number 62-041820  
License Expiration Date: November 30, 2019

STATE OF ILLINOIS DEPARTMENT OF TRANSPORTATION
COUNTY OF ST. CLAIR DEPARTMENT OF ROADS AND BRIDGES
APPROVED <u>9/26</u> , 20 <u>18</u> <i>Norman Etling</i> NORMAN ETLING, P.E., COUNTY ENGINEER
PASSED <u>11/2/18</u> , 20__ <i>acting [Signature]</i> DISTRICT 8 ENGINEER OF LOCAL ROADS & STREETS
RELEASING FOR BID BASED ON LIMITED REVIEW <u>11/8/18</u> , 20__ <i>[Signature]</i> REGION 5 ENGINEER

**STATION EQUATIONS**

- STA. 88+61.44 BK. = STA. 88+61.77 AH.
- STA. 189+24.49 BK. = STA. 189+24.72 AH.
- STA. 221+82.53 BK. = STA. 221+84.04 AH.
- STA. 245+60.54 BK. = STA. 245+67.91 AH.
- STA. 259+48.49 BK. = STA. 259+61.48 AH.

**BRIDGE OMISSIONS**

- STA. 18+01 TO STA. 19+43
- STA. 89+46 TO STA. 90+89
- STA. 241+78 TO STA. 243+04

**ROADWAY OMISSIONS**

- STA. 104+16 TO STA. 112+06

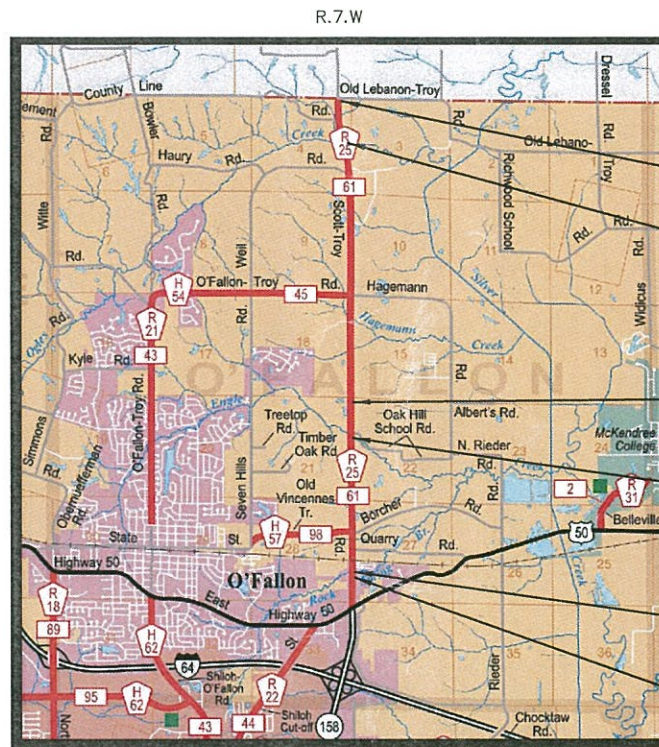
**APPLICABLE IDOT HIGHWAY STANDARDS**

701006-05	701311-03
701011-04	701901-08
701301-04	780001-05
701306-04	781001-04

**DESIGN DESIGNATION**

SCOTT-TROY ROAD : MINOR ARTERIAL  
ADT (2016) : 13,100  
DESIGN SPEED : 55 MPH

Call Joint Utility Locating Information for Excavators  
(J.U.L.I.E.) before digging 800-892-0123



**LOCATION MAP**

GROSS LENGTH SCOTT-TROY = 25,146.00 ft (4.763 mi)  
OMISSIONS = 1,223.43 ft (0.232 MILE)  
NET LENGTH = 23,922.57 ft (4.531 mi)



SCALE IN MILES

SECTION 15-00253-13-RS  
ENDS STA. 268+60

BRIDGE OMISSION STA 241+78  
TO STA 243+04

HILLTOP DRIVE OMISSION  
STA 104+16 TO STA 112+06

BRIDGE OMISSION STA 89+46  
TO STA 90+89

BRIDGE OMISSION STA 18+01  
TO STA 19+43

SECTION 15-00253-13-RS  
BEGINS STA.17+14

**SUMMARY OF QUANTITIES**

CODE NO.	ITEM	UNIT	TOTAL QUANTITY
40300400	BITUMINOUS MATERIALS (COVER AND SEAL COATS)	TON	76.9
40300600	SEAL COAT AGGREGATE	TON	513
40600290	BITUMINOUS MATERIALS (TACK COAT)	POUND	30103
40600990	TEMPORARY RAMP	SQ YD	196
40603340	HOT-MIX ASPHALT SURFACE COURSE, MIX "D", N70	TON	7358
44000157	HOT-MIX ASPHALT SURFACE REMOVAL, 2"	SQ YD	67180
44300200	STRIP REFLECTIVE CRACK CONTROL TREATMENT	FOOT	3046
48203100	HOT-MIX ASPHALT SHOULDERS	TON	166
67100100	MOBILIZATION	L SUM	1
70100450	TRAFFIC CONTROL AND PROTECTION, STANDARD 701201	L SUM	1
70100460	TRAFFIC CONTROL AND PROTECTION, STANDARD 701306	L SUM	1
70300100	SHORT-TERM PAVEMENT MARKING	FOOT	4793
70300150	SHORT TERM PAVEMENT MARKING REMOVAL	SQ FT	1597
70300210	TEMPORARY PAVEMENT MARKING LETTERS AND SYMBOLS	SQ FT	93
70300220	TEMPORARY PAVEMENT MARKING - LINE 4"	FOOT	78620
70300280	TEMPORARY PAVEMENT MARKING - LINE 24"	FOOT	60
△ 78001100	PAINT PAVEMENT MARKINGS-LETTERS AND SYMBOLS	SQ FT	93
△ 78001110	PAINT PAVEMENT MARKING - LINE 4"	FOOT	78695
△ 78001150	PAINT PAVEMENT MARKING - LINE 12"	FOOT	277
△ 78001180	PAINT PAVEMENT MARKING - LINE 24"	FOOT	60
△ 78100100	RAISED REFLECTIVE PAVEMENT MARKER	EACH	388
△ 78300200	RAISED REFLECTIVE PAVEMENT MARKER REMOVAL	EACH	388
# Z0076600	TRAINEES	HOURL	500
# Z0076604	TRAINEES TRAINING PROGRAM GRADUATE	HOURL	500

INITIALS	DATE
DESIGNED T. HOLDENER	4/16
CHECKED	
DRAWN D. SENNE	4/16
CHECKED	

△ SPECIALTY ITEMS  
#0042

PREPARED BY ST. CLAIR COUNTY HIGHWAY DEPARTMENT

**GENERAL NOTES**

- SHORT TERM PAVEMENT MARKING SHALL BE APPLIED TO THE MILLED SURFACE AND HOT-MIX ASPHALT SURFACE COURSE AS SPECIFIED IN SECTION 703 OF THE STANDARD SPECIFICATIONS. TEMPORARY TAPE SHALL BE USED ON THE SURFACE COURSE AND PAINT SHALL BE USED ON MILLED SURFACES.
- THE FOLLOWING FACTORS WERE USED TO DETERMINE THE REQUIRED AMOUNT OF MATERIALS NEEDED.
 

BITUMINOUS MATERIALS (TACK COAT) ON MILLED HMA	0.05 LB/SQ FT
BITUMINOUS MATERIAL (COVER AND SEAL COAT)	0.35 GAL/SQ YD
SEAL COAT AGGREGATE	20 LB/ SQ YD
HOT MIX ASPHALT SURFACE COURSE, MIX "D", N70	112 LBS/SQ YD/IN
- THE FOLLOWING UTILITIES COMPANIES MAY HAVE FACILITIES WITHIN THE PROJECT LIMITS:
 

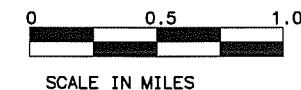
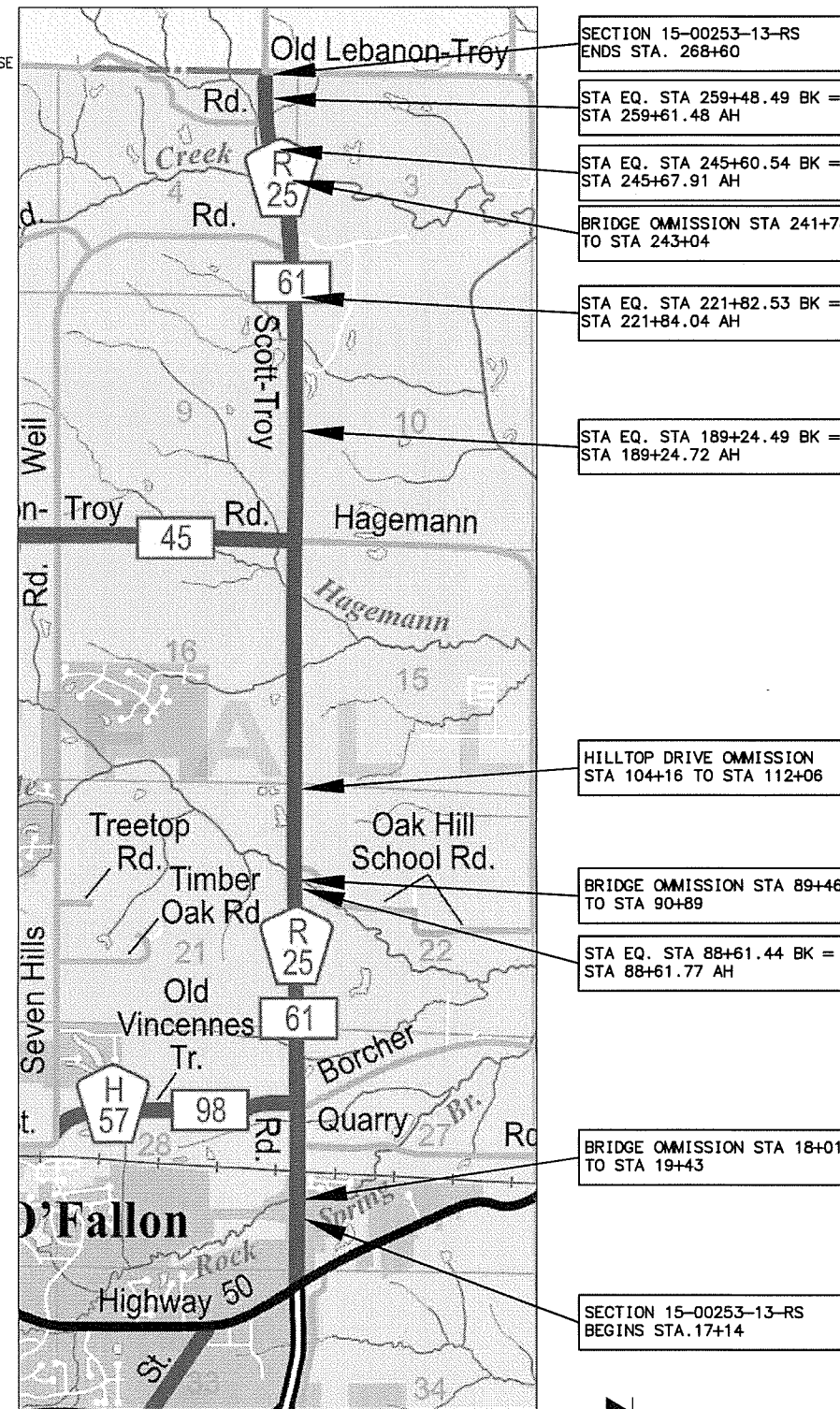
AT&T 1420 FRONTAGE ROAD O'FALLON, IL 62269 G11629@ATT.COM	AMEREN IP 1050 WEST BLVD. BELLEVILLE, IL 62221 618-236-6281	CHARTER COMMUNICATIONS 941 CHARTER COMMONS TOWN & COUNTRY, MO 63017 314-386-1649	CITY OF O'FALLON 255 SOUTH LINCOLN AVE. O'FALLON, IL 62269 618-624-4500
VILLAGE OF CASEYVILLE 909 S. MAIN ST. CASEYVILLE, IL 62232 618-578-3383	MCI 469-886-4238	CENTURLINK 303-992-9931	SOUTHWESTERN ELECTRIC COOP 525 U.S. ROUTE 40 GREENVILLE, IL 62246 800-637-8667
- ALL PROPOSED PAVEMENT MARKINGS SHALL MATCH EXISTING PAVEMENT MARKING LOCATIONS.
- THE ENGINEER SHALL BE THE SOLE JUDGE CONCERNING CURING TIME FOR THE VARIOUS HOT-MIX ASPHALT LIFTS.
- THE FOLLOWING MIXTURE REQUIREMENTS ARE APPLICABLE FOR THIS PROJECT:
 

MIXTURE USE:	HMA SURFACE COURSE, 2"
APPLICATION:	HOT-MIX ASPHALT SURFACE COURSE, MIX "D", N70
PG GRADE:	PG 64-22
RAP % (MAX):	SEE SPEC.
DESIGN AIR VOIDS:	4.0% NDESIGN = 70
MIXTURE COMPOSITION:	IL-9.5 / IL-12.5
FRICTION AGGREGATE:	MIXTURE D

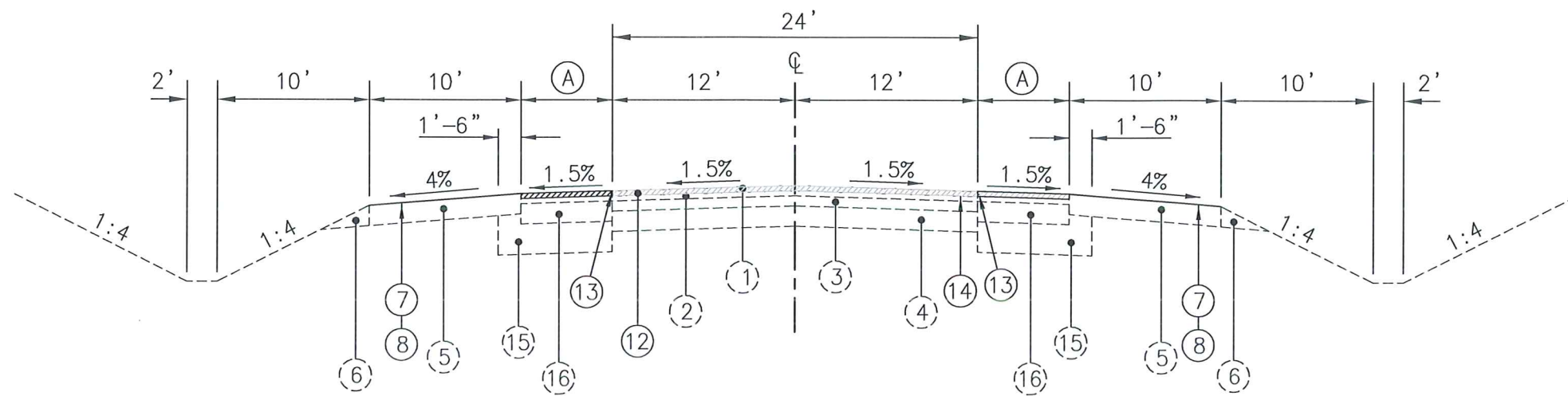
**COMMITMENTS**

NONE AT THIS TIME.

**PROJECT DIAGRAM**

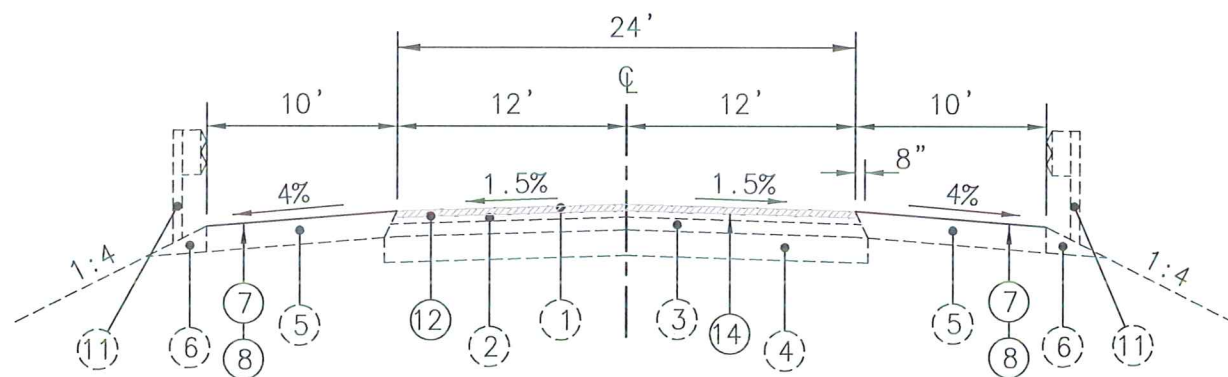


FAU ROUTE	FAS ROUTE	SECTION NO.	COUNTY	SHEET OF SHEETS
9175	1937	15-00253-13-RS	ST. CLAIR	3 OF 8
TYPICAL SECTIONS				
PROJECT NO. BKMI(299)			CONTRACT #97685	



**SCOTT-TROY ROAD**  
**EXISTING TYPICAL SECTION**  
STA. 112+06 TO STA. 118+95

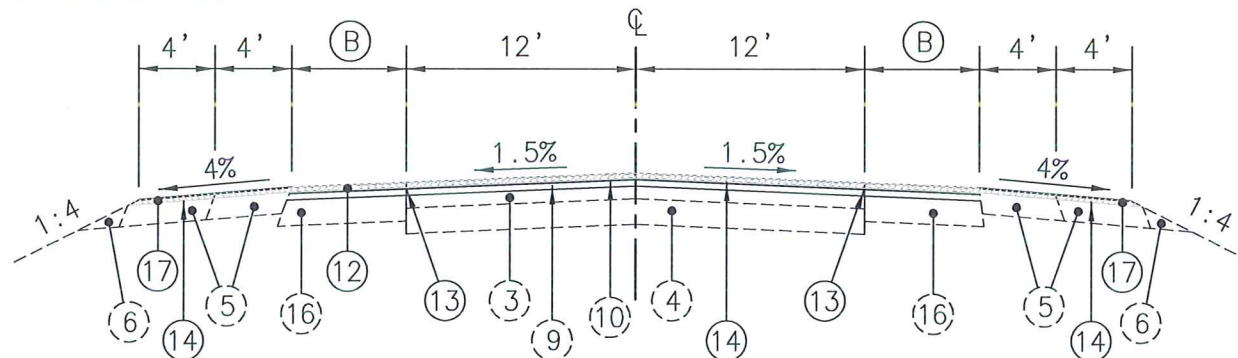
(A) 6': STA.112+06 TO STA.115+95  
VARIES 6' TO 1': STA.115+95 TO STA.118+95



**SCOTT-TROY ROAD**  
**TYPICAL SECTION**

STA. 17+14 TO STA. 18+01  
STA. 19+43 TO STA. 34+58  
STA. 42+92 TO STA. 89+46  
STA. 90+89 TO STA. 104+16  
STA. 118+95 TO STA. 233+59  
STA. 246+85 TO STA. 247+52  
STA. 260+79 TO STA. 268+60

(B) VARIES 1' TO 6': STA.34+58 TO STA.36+78  
6': STA.36+78 TO STA.40+72  
VARIES 6' TO 1': STA.40+72 TO STA.42+92



**TYPICAL SECTION**

STA. 34+58 TO STA. 42+92

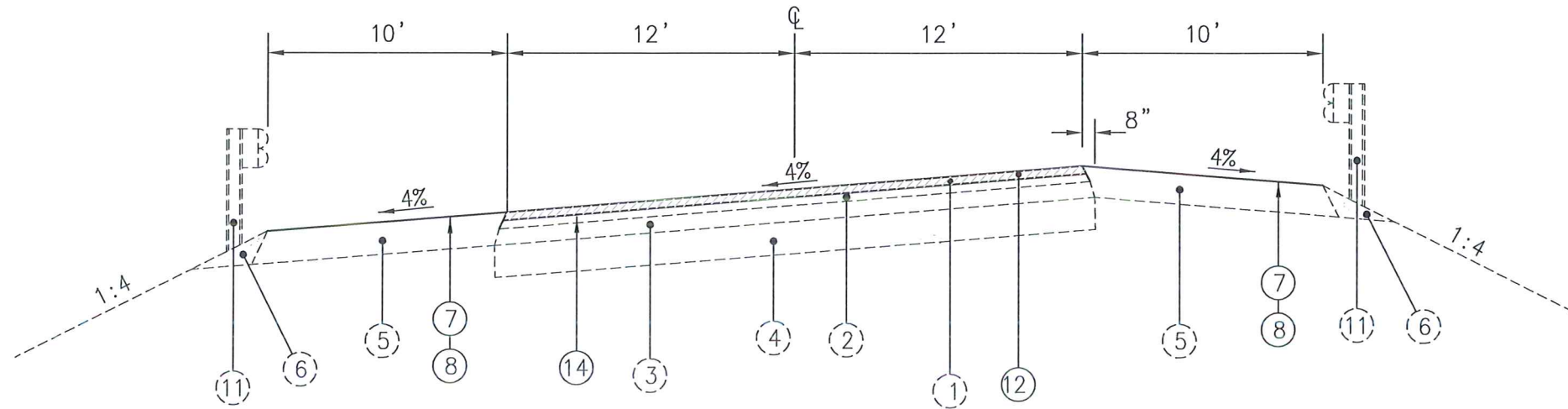
**LEGEND**

- (1) EXISTING HOT-MIX ASPHALT SURFACE COURSE, 2"
- (2) EXISTING HOT-MIX ASPHALT BINDER, 2"
- (3) EXISTING BITUMINOUS MIXTURE COMPLETE, 4"
- (4) EXISTING AGGREGATE BASE COURSE, 8"
- (5) EXISTING HOT-MIX ASPHALT SHOULDERS, 8"
- (6) EXISTING AGGREGATE SHOULDERS
- (7) PROPOSED BITUMINOUS MATERIALS (COVER AND SEAL COATS)
- (8) PROPOSED SEAL COAT AGGREGATE
- (9) EXISTING HOT-MIX ASPHALT BINDER, 2 1/2"
- (10) EXISTING HOT-MIX ASPHALT SURFACE, 1 1/2"
- (11) EXISTING STEEL PLATE BEAM GUARDRAIL
- (12) PROPOSED HOT-MIX ASPHALT SURFACE REMOVAL, 2" AND HOT-MIX ASPHALT SURFACE COURSE, MIX D, N70, 2"
- (13) PROPOSED STRIP REFLECTIVE CRACK CONTROL TREATMENT
- (14) PROPOSED BITUMINOUS MATERIALS TACK COAT
- (15) EXISTING LIME MODIFIED SOILS, 12"
- (16) EXISTING BITUMINOUS BASE COURSE, 8"
- (17) PROPOSED HOT-MIX ASPHALT SHOULDER, 2"

	INITIALS	DATE
DESIGNED	T.HOLDENER	6/15
CHECKED		
DRAWN	D.SENNE	6/15
CHECKED		
PREPARED BY ST. CLAIR COUNTY HIGHWAY DEPARTMENT		

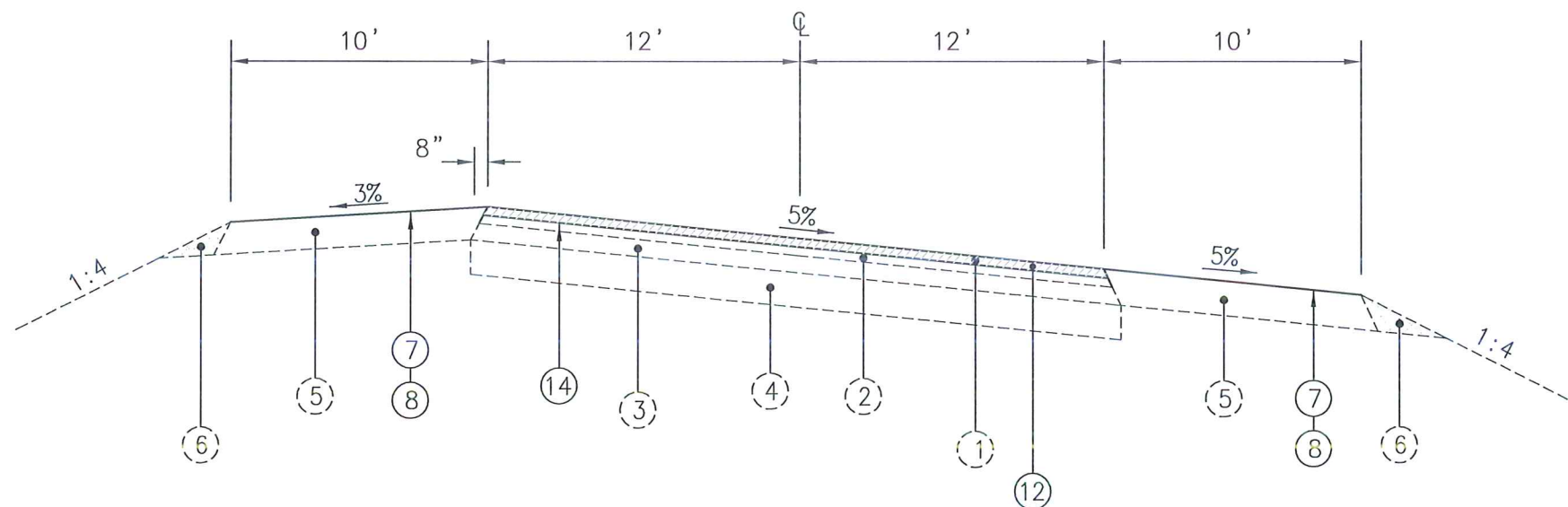
**TYPICAL SECTIONS**

FAU ROUTE	FAS ROUTE	SECTION NO.	COUNTY	SHEET OF SHEETS
9175	1937	15-00253-13-RS	ST. CLAIR	4 OF 8
TYPICAL SECTIONS				
PROJECT NO. BKMI(299)				CONTRACT #97685



TYPICAL SECTION

STA. 233+59 – STA. 235+34 (SUPERELEVATED TRANSITION)  
 STA. 235+34 – STA. 241+78 (FULL SUPERELEVATION)  
 STA. 243+04 – STA. 245+03 (FULL SUPERELEVATION)  
 STA. 245+03 – STA. 246+85 (SUPERELEVATED TRANSITION)



TYPICAL SECTION

STA. 247+52 – STA. 249+27 (SUPERELEVATED TRANSITION)  
 STA. 249.27 – STA. 258+91 (FULL SUPERELEVATION)  
 STA. 258+91 – STA. 260+79 (SUPERELEVATED TRANSITION)

LEGEND

- ① EXISTING HOT-MIX ASPHALT SURFACE COURSE, 2"
- ② EXISTING HOT-MIX ASPHALT BINDER, 2"
- ③ EXISTING BITUMINOUS MIXTURE COMPLETE, 4"
- ④ EXISTING AGGREGATE BASE COURSE, 8"
- ⑤ EXISTING HOT-MIX ASPHALT SHOULDERS, 8"
- ⑥ EXISTING AGGREGATE SHOULDERS
- ⑦ PROPOSED BITUMINOUS MATERIALS (COVER AND SEAL COATS)
- ⑧ PROPOSED SEAL COAT AGGREGATE
- ⑨ EXISTING HOT-MIX ASPHALT BINDER, 2 1/2"
- ⑩ EXISTING HOT-MIX ASPHALT SURFACE, 1 1/2"
- ⑪ EXISTING STEEL PLATE BEAM GUARDRAIL
- ⑫ PROPOSED HOT-MIX ASPHALT SURFACE REMOVAL, 2" AND HOT-MIX ASPHALT SURFACE COURSE, MIX D, N70, 2"
- ⑬ PROPOSED STRIP REFLECTIVE CRACK CONTROL TREATMENT
- ⑭ PROPOSED BITUMINOUS MATERIALS TACK COAT
- ⑮ EXISTING LIME MODIFIED SOILS, 12"
- ⑯ EXISTING BITUMINOUS BASE COURSE, 8"

INITIALS	DATE
DESIGNED T.HOLDENER	6/15
CHECKED	
DRAWN D.SENNE	6/15
CHECKED	

PREPARED BY ST. CLAIR COUNTY HIGHWAY DEPARTMENT

TYPICAL SECTIONS

FAU ROUTE	FAS ROUTE	SECTION NO.	COUNTY HIGHWAY	COUNTY	SHEET OF SHEETS
9175	1937	15-00253-13-RS	61	ST. CLAIR	5 OF 8
PROJECT NO. BKMI(299)			CONTRACT #97685		

### PAVEMENT, SHOULDER AND RPM'S SCHEDULE

LOCATION	LENGTH	WIDTH		AREA		HMA SURF REM 2"	HMA SURF CSE MIX "D" N70 2"	HMA SHOULDERS	BIT MATLS TACK COAT	BIT MATLS C & S COAT	SEAL COAT AGG	STRIP REFLECTIVE CRACK CON TREATMENT	TEMPORARY RAMP	RAISED REFLECTIVE PAVEMENT MARKER	RAISED REF PVT MK REM
		PAVT	SHLD	PAVT	SHLD	SQ YD	TON	TON	POUND	TON	TON	FOOT	SQ YD	EACH	EACH
		FOOT	FOOT	SQ FT	SQ FT										
17+14 TO 18+01	87.00	24	20	2,088.00	1,740.00	232.00	26.00		104.40	0.30	1.90		37.40	1	1
SN 082-3007 - OMISSION															
19+43 TO 34+58	1,515.00	24	20	36,360.00	30,300.00	4,040.00	452.50		1,818.00	5.00	33.70		18.70	25	25
34+58 TO 36+78	220.00	31	16	6,820.00	3,520.00	1,148.90	91.20	43.8	517.00			440.00		12	12
36+78 TO 40+72	394.00	36	16	14,184.00	6,304.00	2,561.00	208.40	78.4	1,024.40			788.00		19	19
40+72 TO 42+92	220.00	31	16	6,820.00	3,520.00	1,148.90	84.90	43.8	517.00			440.00		14	14
42+92 TO 88+61.44	4,569.44	24	20	109,666.60	91,388.80	12,185.20	1,364.70		5,483.30	15.20	101.50			67	67
88+61.44 BK = 88+61.77 AH															
88+61.77 TO 89+46	84.23	24	20	2,021.50	1,684.60	224.60	25.20		101.10	0.30	1.90		18.70	1	1
SN 082-3056 - OMISSION															
90+89 TO 104+16	1,327.00	24	20	31,848.00	26,540.00	3,538.70	396.30		1,592.40	4.40	29.50		37.40	20	20
ROADWAY - OMISSION															
112+06 TO 115+95	389.00	36	20	14,004.00	7,780.00	1,556.00	174.30		700.20	1.30	8.60	778.00	28.00	26	26
115+95 TO 118+95	300.00	31	20	9,300.00	6,000.00	1,033.30	115.70		465.00	1.00	6.70	600.00		16	16
118+95 TO 189+24.49	7,029.49	24	20	168,707.80	140,589.80	18,745.30	2,099.50		8,435.40	23.40	156.20			90	90
189+24.49 BK=189+24.72 AH															
189+24.72 TO 221+82.53	3,257.81	24	20	78,187.40	65,156.20	8,687.50	973.00		3,909.40	10.90	72.40			41	41
221+82.53 BK=221+84.04 AH															
221+84.04 TO 241+78	1,993.96	24	20	47,855.00	39,879.20	5,317.20	595.50		2,392.80	6.60	44.30		18.70	25	25
SN 082-3071 - OMISSION															
243+04 TO 245+60.54	256.54	24	20	6,157.00	5,130.80	684.10	76.60		307.90	0.90	5.70		18.70	3	3
245+60.54 BK=245+67.91 AH															
245+67.91 TO 259+48.49	1,380.58	24	20	33,133.90	27,611.60	3,681.50	412.30		1,656.70	4.60	30.70			17	17
259+48.49 BK=259+61.48 AH															
259+61.48 TO 268+60	898.52	24	20	21,564.50	17,970.40	2,396.10	268.40		1,078.20	3.00	20.00		18.70	11	11
TOTAL	23,922.57					67,180.3	7,358.10	166.1	30,103.20	76.90	513.10	3,046.00	196.30	388	388

SECTION NO.	COUNTY HIGHWAY	COUNTY	SHEET OF SHEETS
15-00253-13-RS	61	ST. CLAIR	6 OF 8
PROJECT NO. BKMI(299)		CONTRACT #97685	

### PAVEMENT MARKING SCHEDULE

LOCATION	PAINT PAVEMENT MARKING										TEMPORARY PAVEMENT MARKING						SHORT-TERM PAVEMENT MARKING (*)	SHORT-TERM PAVEMENT MARKING REMOVAL
	LINE 4"					DOUBLE LINE 4"	LINE 12"	LINE 24"	WHITE	LINE 4"				DOUBLE LINE 4"	LINE 24"	WHITE		
	WHITE		YELLOW				WHITE	LETTERS & SYMBOLS	WHITE	YELLOW			WHITE	LETTERS & SYMBOLS				
	DOTTED EXTENSION	SOLID (**)	SKIP-DASH	SOLID LT/RT		SOLID	SOLID DIAGONAL		SOLID	SOLID (**)	SKIP-DASH	SOLID LT/RT			SOLID	SOLID		
	FOOT	FOOT	FOOT	FOOT		FOOT	FOOT	FOOT	SQ FT	FOOT	FOOT	FOOT		FOOT	FOOT	SQ FT		
17+14 TO 25+83		1676	217							1676	217						145	48.3
25+83 TO 33+29		1411	187	746	RT					1411	187	746	RT				149	49.7
33+29 TO 33+78		98				98				98				98			10	3.3
33+78 TO 38+58		960				1920	204			960				1920			96	32.0
38+58 TO 41+34		473				352		24	62	473				352	24	62	70	23.3
41+34 TO 45+03	75	738				738				738				738			74	24.7
45+03 TO 49+88		970	121	485	LT					970	121	485	LT				97	32.3
49+88 TO 53+07		638	80							638	80						64	21.3
53+07 TO 61+23		1549	204	816	RT					1549	204	816	RT				163	54.3
61+23 TO 77+42		3078				3238				3078				3238			324	108.0
77+42 TO 88+61.44		2239	280	1119	LT					2239	280	1119	LT				224	74.7
88+61.44 BK = 88+61.77 AH																		0.0
88+61.77 TO 88+81		38	5	19	LT					38	5	19	LT				4	1.3
88+81 TO 99+24		1984	261							1984	261						180	60.0
99+24 TO 103+16		784	98	392	RT					784	98	392	RT				78	26.0
103+16 TO 104+16		200				200				200				200			20	6.7
ROADWAY - OMISSION																		0.0
112+06 TO 113+86		360				720	73			360				720			36	12.0
113+86 TO 115+01		301				230		12	31	301				230	12	31	46	15.3
115+01 TO 118+95		681				1288				681				1288			64	21.3
118+95 TO 123+85		980				980				980				980			98	32.7
123+85 TO 127+71		772	97	386	LT					772	97	386	LT				77	25.7
127+71 TO 136+20		1698				1698				1698				1698			170	56.7
136+20 TO 145+04		1768	221	884	RT					1768	221	884	RT				177	59.0
145+04 TO 158+65		2722	340	1361	LT					2722	340	1361	LT				272	90.7
TOTAL	75	26118	2111	6208		11462	277	36	93	26118	2111	6208		11462	36	93	2638	879

\* ONE APPLICATION EACH FOR HMA SURFACE REMOVAL AND SURFACE COURSE.

\*\* EDGE LINES SHALL END AT THE RADIUS RETURNS OF ALL SIDE STREETS.

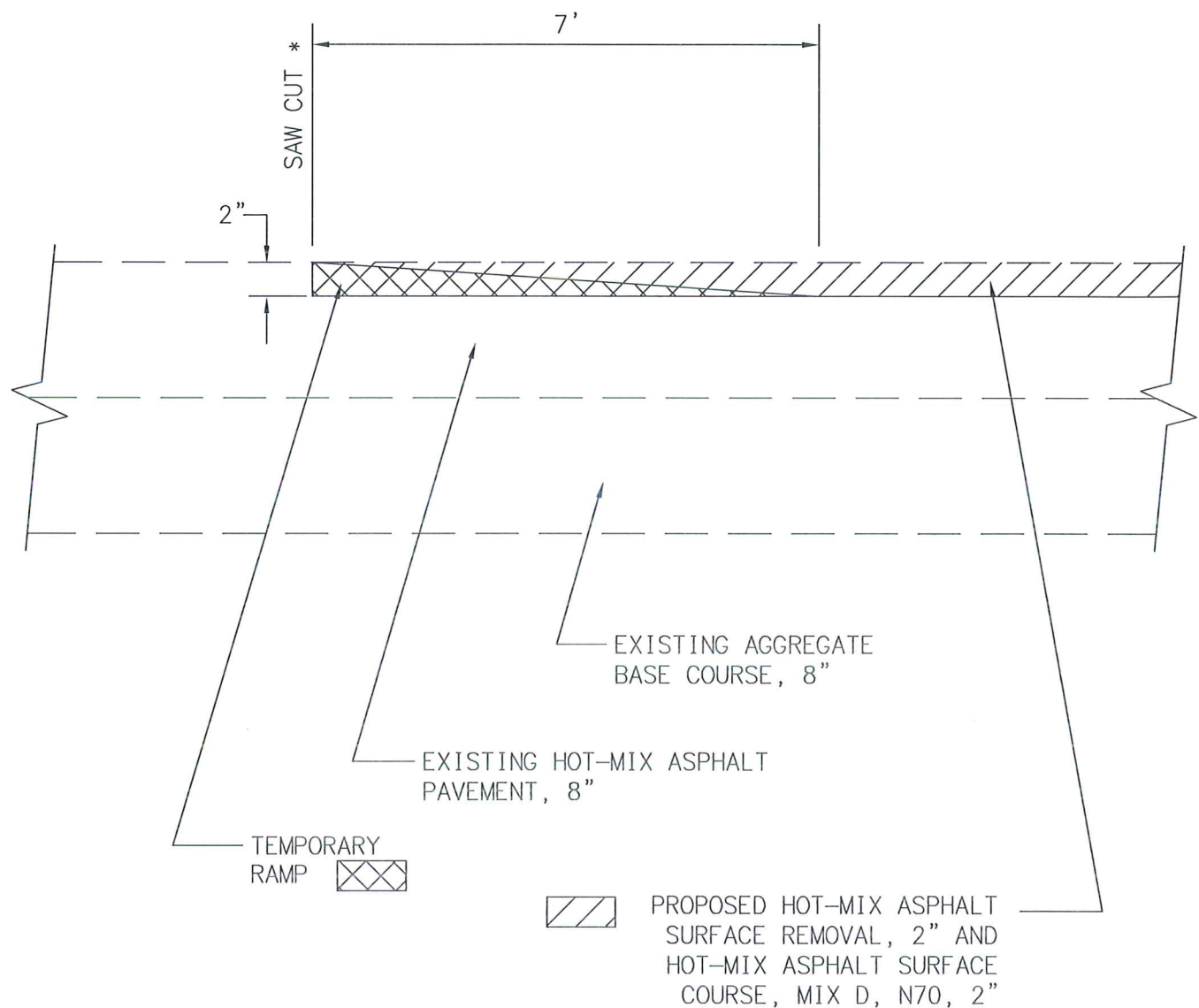
SECTION NO.	COUNTY HIGHWAY	COUNTY	SHEET OF SHEETS
15-00253-13-RS	61	ST. CLAIR	7 OF 8
PROJECT NO. BKMI(299)		CONTRACT #97685	

### PAVEMENT MARKING SCHEDULE

LOCATION	PAINT PAVEMENT MARKING									TEMPORARY PAVEMENT MARKING						SHORT-TERM PAVEMENT MARKING (*)	SHORT-TERM PAVEMENT REMOVAL	
	LINE 4"				DOUBLE LINE 4"	LINE 12"	LINE 24"	WHITE	LINE 4"				DOUBLE LINE 4"	LINE 24"	WHITE			
	WHITE		YELLOW				WHITE	LETTERS & SYMBOLS	WHITE	YELLOW			WHITE	LETTERS & SYMBOLS				
	DOTTED EXTENSION	SOLID (**)	SKIP-DASH	SOLID LT/RT	SOLID	SOLID DIAGONAL	SOLID		SOLID (**)	SKIP-DASH	SOLID LT/RT	SOLID	SOLID					
	FOOT	FOOT	FOOT	FOOT		FOOT	FOOT	FOOT	SQ FT	FOOT	FOOT	FOOT		FOOT	FOOT			SQ FT
158+65 TO 163+78		926				1026		12		926				1026	12		103	34.3
164+58 TO 169+11		841	113	453	LT			12		841	113	453	LT		12		91	30.3
169+11 TO 185+59		3296	412							3296	412						330	110.0
185+59 TO 189+24.49		731	91	365	RT					731	91	365	RT				73	24.3
189+24.49 BK=189+24.72 AH																		0.0
189+24.72 TO 199+08		1967	246	983	RT					1967	246	983	RT				197	65.7
199+08 TO 200+25		234				234				234				234			23	7.7
200+25 TO 206+77		1234	163	652	LT					1234	163	652	LT				130	43.3
206+77 TO 213+47		1262	168							1262	168						134	44.7
213+47 TO 221+82.53		1597	209	836	RT					1597	209	836	RT				167	55.7
221+82.53 BK=221+84.04 AH																		0.0
221+84.04 TO 224+73		578	72	289	RT					578	72	289	RT				58	19.3
224+73 TO 236+17		2142				2288				2142				2288			229	76.3
236+17 TO 241+57		1080	135	540	LT					1080	135	540	LT				108	36.0
241+57 TO 245+60.54		807	101							807	101						56	18.7
245+60.54 BK=245+67.91 AH																		0.0
245+67.91 TO 247+37		338	42							338	42						34	11.3
247+37 TO 253+86		1298	162	649	RT					1298	162	649	RT				130	43.3
253+86 TO 259+48.49		1037	141	562	LT					1037	141	562	LT				112	37.3
259+48.49 BK=259+61.48 AH																		0.0
259+61.48 TO 264+61		999	125							999	125						100	33.3
264+61 TO 268+60		798	100	399	RT					798	100	399	RT				80	26.7
PAGE 2 TOTALS	0	21165	2280	5728		3548	0	24	0	21165	2280	5728		3548	24	0	2155	718
PAGE 1 TOTALS	75	26118	2111	6208		11462	277	36	93	26118	2111	6208		11462	36	93	2638	879
PROJECT TOTALS	75	47283	4391	11936	0	15010	277	60	93	47283	4391	11936	0	15010	60	93	4793	1597
		PAINT PAVEMENT MARKING LINE 4 =				78695				TEMPORARY PAVEMENT MARKING LINE 4=				78620				

\* ONE APPLICATION EACH FOR HMA SURFACE REMOVAL AND SURFACE COURSE.  
 \*\* EDGE LINES SHALL END AT THE RADIUS RETURNS OF ALL SIDE STREETS.

FAU ROUTE	FAS ROUTE	SECTION NO.	COUNTY	SHEET OF SHEETS
9175	1937	15-00253-13-RS	ST. CLAIR	8 OF 8
MISC. DETAILS				
PROJECT NO. BKMI(299)			CONTRACT #97685	



NOTE: ALL SURFACE REMOVAL COSTS ASSOCIATED WITH CONSTRUCTING THE DETAIL ABOVE AS SHOWN, SHALL BE INCLUDED IN THE COST OF HMA SURFACE REMOVAL 2".

**TEMPORARY RAMP DETAIL**  
(NOT TO SCALE)

- STA. 17+14 \*
- STA. 18+01 (BRIDGE)
- STA. 19+43 (BRIDGE)
- STA. 89+46 (BRIDGE)
- STA. 90+89 (BRIDGE)
- STA. 104+16 \*
- STA. 112+06 \*
- STA. 241+78 (BRIDGE)
- STA. 243+04 (BRIDGE)
- STA. 268+60 \*

	INITIALS	DATE
DESIGNED	T.HOLDENER	3/16
CHECKED		
DRAWN	D.SENNE	3/16
CHECKED		
PREPARED BY ST. CLAIR COUNTY HIGHWAY DEPARTMENT		