

# STATE OF ILLINOIS DEPARTMENT OF TRANSPORTATION PROPOSED HIGHWAY PLANS

F.A.I. RTE.	SECTION	COUNTY	TOTAL SHEETS	SHEET NO.
FAI 88	(195-2HVB)BR	WHITESIDE	6	1
		ILLINOIS	CONTRACT NO. 64S62	

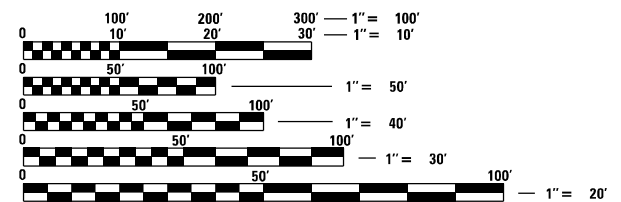
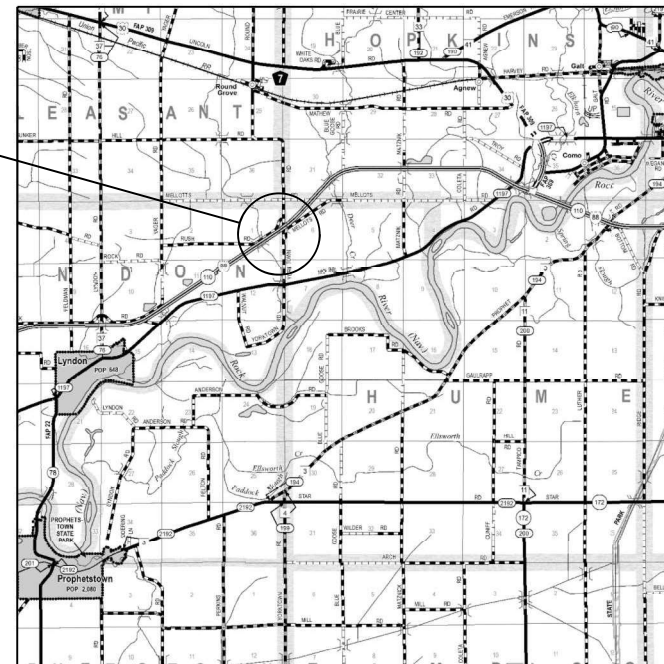
C-92-129-33



SEE SHEET 2 FOR INDEX OF SHEETS

**ROUTE FAI 88  
SECTION (195-2HVB)BR  
PROJECT  
BRIDGE REHABILITATION  
WHITESIDE COUNTY, IL**

**EXISTING STRUCTURE**  
SN 098-0067 A FOUR SPAN  
STEEL GIRDER SUPERSTRUCTURE  
WITH CLOSED ABUTMENTS  
BACK TO BACK LENGTH = 459'-2"  
OUT TO OUT WIDTH = 32'-0"



FULL SIZE PLANS HAVE BEEN PREPARED USING STANDARD ENGINEERING SCALES. REDUCED SIZE PLANS WILL NOT CONFORM TO STANDARD SCALES. IN MAKING MEASUREMENTS ON REDUCED PLANS, THE ABOVE SCALES MAY BE USED.

J.U.L.I.E.  
JOINT UTILITY LOCATION INFORMATION FOR EXCAVATION  
1-800-892-0123  
OR 811

PROJECT ENGINEER SCOTT WYATT, PE, SE  
PROJECT MANAGER MAHMOUD ETEMADI, PE

CONTRACT NO. 64S62

LOCATION MAP

GROSS LENGTH = 459.2 FT. = 0.09 MILE  
NET LENGTH = 459.2 FT. = 0.09 MILE

STATE OF ILLINOIS  
DEPARTMENT OF TRANSPORTATION

SUBMITTED December 11, 20 23

*David Alford*  
REGIONAL ENGINEER

February 2, 2024  
*Scott A. Etkin*  
ENGINEER OF DESIGN AND ENVIRONMENT

February 2, 2024  
*Stephen M. Smith*  
DIRECTOR OF HIGHWAYS PROJECT IMPLEMENTATION

**PRINTED BY THE AUTHORITY  
OF THE STATE OF ILLINOIS**

**INDEX OF SHEETS**

1. COVER SHEET
2. INDEX OF SHEETS, HIGHWAY STANDARDS AND GENERAL NOTES
3. SUMMARY OF QUANTITIES
4. PLAN AND ELEVATION
5. DECK REPAIRS
6. 40.1 D2 TRAFFIC CONTROL FOR ROAD CLOSURE

**STATE/DISTRICT HIGHWAY STANDARDS**

- 000000-08 STANDARDS SYMBOLS, ABBREVIATIONS AND PATTERNS
- 001006 DECIMALS OF AN INCH AND OF A FOOT
- 701001-02 OFF-ROAD OPERATIONS, 2L, 2W, MORE THAN 15' (4.5m) TO 24" (600 mm) AWAY FROM PAVEMENT EDGE
- 701006-05 OFF-ROAD OPERATIONS, 2L, 2W, 15' (4.5m) TO 24' (600 mm) FROM PAVEMENT EDGE
- 701011-04 OFF-RD MOVING OPERATIONS, 2L, 2W, DAY ONLY
- 701301-04 LANE CLOSURE, 2L, 2W, SHORT TIME OPERATIONS
- 701400-12 APPROACH TO LANE CLOSURE, FREEWAY/EXPRESSWAY
- 701406-13 LANE CLOSURE, FREEWAY/EXPRESSWAY, DAY OPERATIONS ONLY
- 701901-09 TRAFFIC CONTROL DEVICES

**GENERAL NOTES**

THE STRUCTURE NUMBER SHALL REMAIN 098-0067

DO NOT SCALE PLANS FOR CONSTRUCTION DIMENSIONS

YORKTOWN ROAD WILL BE CLOSED DURING CONSTRUCTION

THE CONTRACTOR SHALL CONTACT THE IDOT DISTRICT 2 ENGINEER AT (815)284-2271 A MINIMUM OF 72 HOURS IN ADVANCE OF BEGINNING WORK.

IDOT IS NOT A MEMBER OF JULIE. IF YOU ARE NEAR ANY OVERHEAD LIGHTING, INTERSECTION LIGHTING OR TRAFFIC SIGNALS, CONTACT THE IDOT TRAFFIC OFFICE AT 815/284-5469 AT LEAST 48 HOURS PRIOR TO WORK.

MODEL: Default  
 FILE NAME: \\kpf.com\dis\Bf\pge\2300695 (WO 8)\02\_Designr (MS)\e456264562402 - Index1.dgn



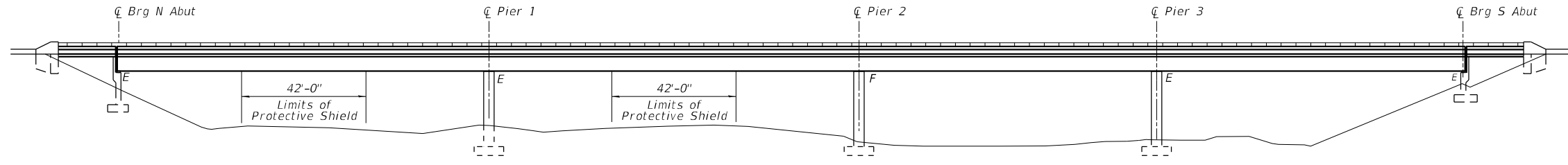
USER NAME =	DESIGNED -	REVISED -
	CHECKED -	REVISED -
PLOT SCALE =	DRAWN -	REVISED -
PLOT DATE =	CHECKED -	REVISED -

**STATE OF ILLINOIS**  
**DEPARTMENT OF TRANSPORTATION**

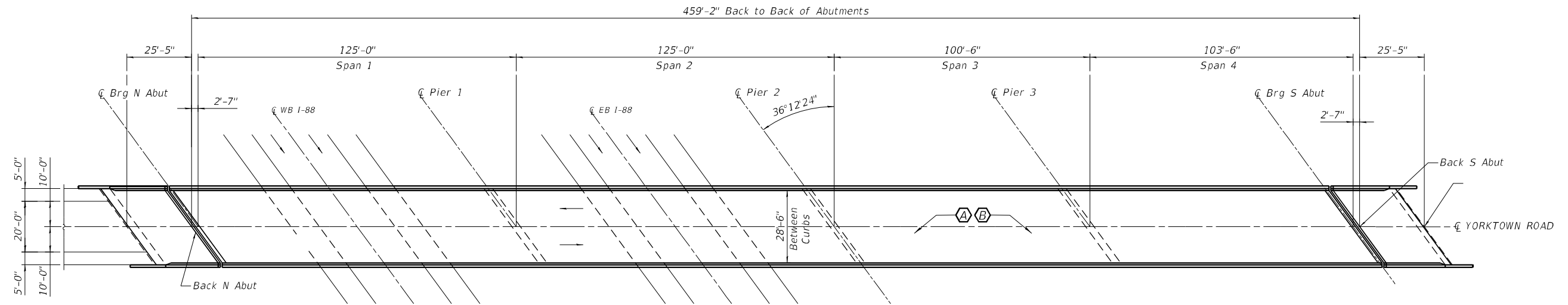
**SN 098-0067 YORKTOWN ROAD OVER I-88**  
**INDEX OF SHEETS, HIGHWAY STANDARDS AND GENERAL NOTES**

F.A.I RTE.	SECTION	COUNTY	TOTAL SHEETS	SHEET NO.
88	(195-2HVBI)BR	WHITESIDE	6	2
SN 098-0067		CONTRACT NO. 64S62		
ILLINOIS FED. AID PROJECT				





ELEVATION



PLAN

GENERAL NOTES

Plan dimensions and details relative to the existing plans are subject to nominal construction variations. The Contractor shall field verify existing dimensions and details affecting new construction and make necessary approved adjustments prior to construction or ordering materials. Such variations shall not be cause for additional compensation for a change in scope of the work, however, the Contractor will be paid for the quantity actually furnished at the unit price bid for the work.

Yorktown Road will be closed during construction.

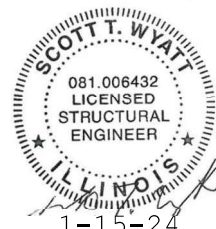
The Contractor shall contact IDOT District 2 Engineer at 815-284-2271 a minimum of 72 hours before beginning work.

SCOPE OF WORK

- (A) Remove and Replace Wearing Surface, Apply Full Lane Sealant Waterproofing System
- (B) Bridge Deck Repairs

TOTAL BILL OF MATERIAL

ITEM	UNIT	TOTAL
Protective Shield	Sq. Yd.	317
Full Lane Sealant Waterproofing System	Sq. Yd.	1615
Deck Repair (Partial)	Sq. Yd.	162
Deck Repair (Full Depth Type I)	Sq. Yd.	33



EXP. 11-30-24

MODEL: Default.kpff.com\dts\Bridges\2300695 (WO 8)\02\_Design (MS)\e456264562404 - 098-0067 Plan & Elev.dgn

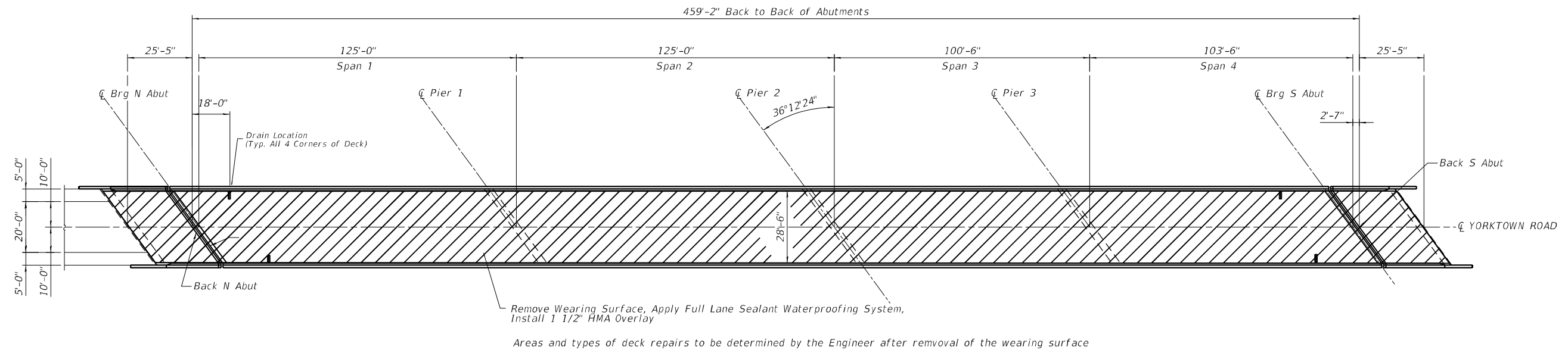


USER NAME =	DESIGNED -	REVISED -
PLOT SCALE =	CHECKED -	REVISED -
PLOT DATE =	DRAWN -	REVISED -
	CHECKED -	REVISED -

STATE OF ILLINOIS  
DEPARTMENT OF TRANSPORTATION

SN 098-0067 YORKTOWN ROAD OVER I-88  
PLAN AND ELEVATION

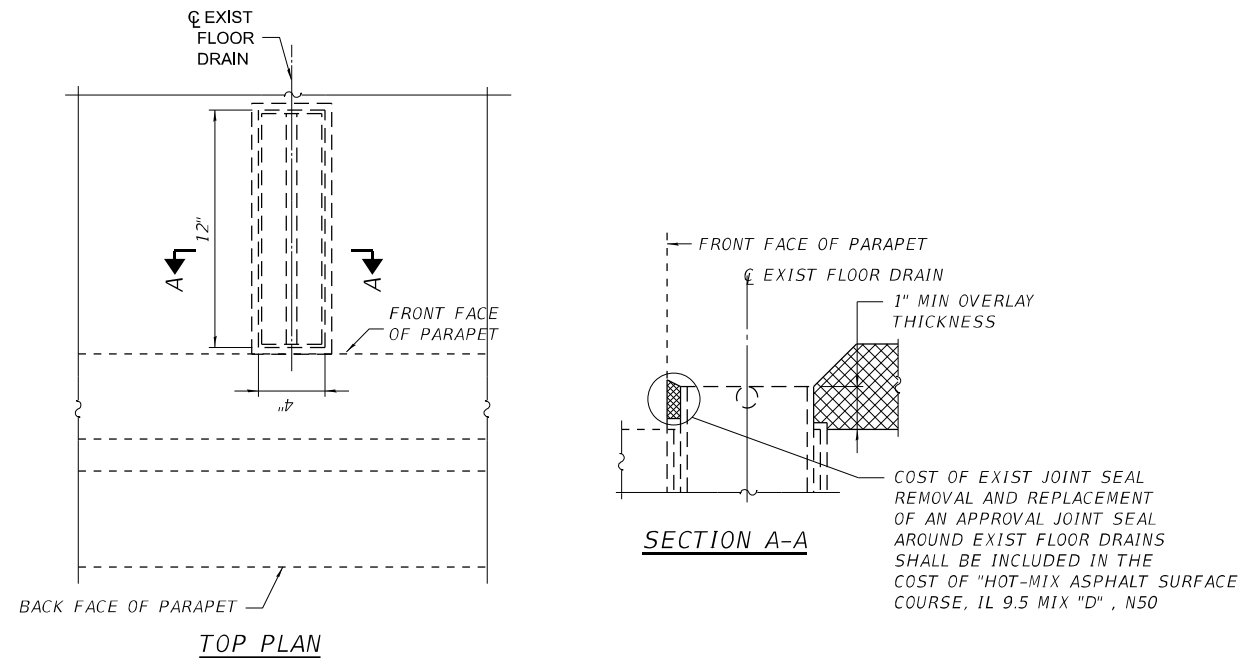
F.A.I. RTE.	SECTION	COUNTY	TOTAL SHEETS	SHEET NO.
88	(195-2HV)BR	WHITESIDE	6	4
SN 098-0067		CONTRACT NO. 64S62		
ILLINOIS FED. AID PROJECT				



PLAN

**HMA**

Location(s):	Surface
Mixture Use(s):	Surface
Binder Grade (AC/PG):	PG 58-28
Design Air Voids:	4.0 @ Ndes=50
Mixture Composition:	
(Mixture Gradation):	IL 9.5
Friction Aggregate:	Mixture "D"
Mixture Weight:	112 LB/SQ YD/IN
Quality Management Program:	QC/QA
Sublot Size:	N/A



TREATMENT AT FLOOR DRAINS

MODEL: Default  
 FILE NAME: \\kpf.com\dfs\Brdg\12300695 (WO 8)102\_Design (MS)16456264562-05 - Deck Repairs.dgn  
 12/15/2023 10:39:37 AM



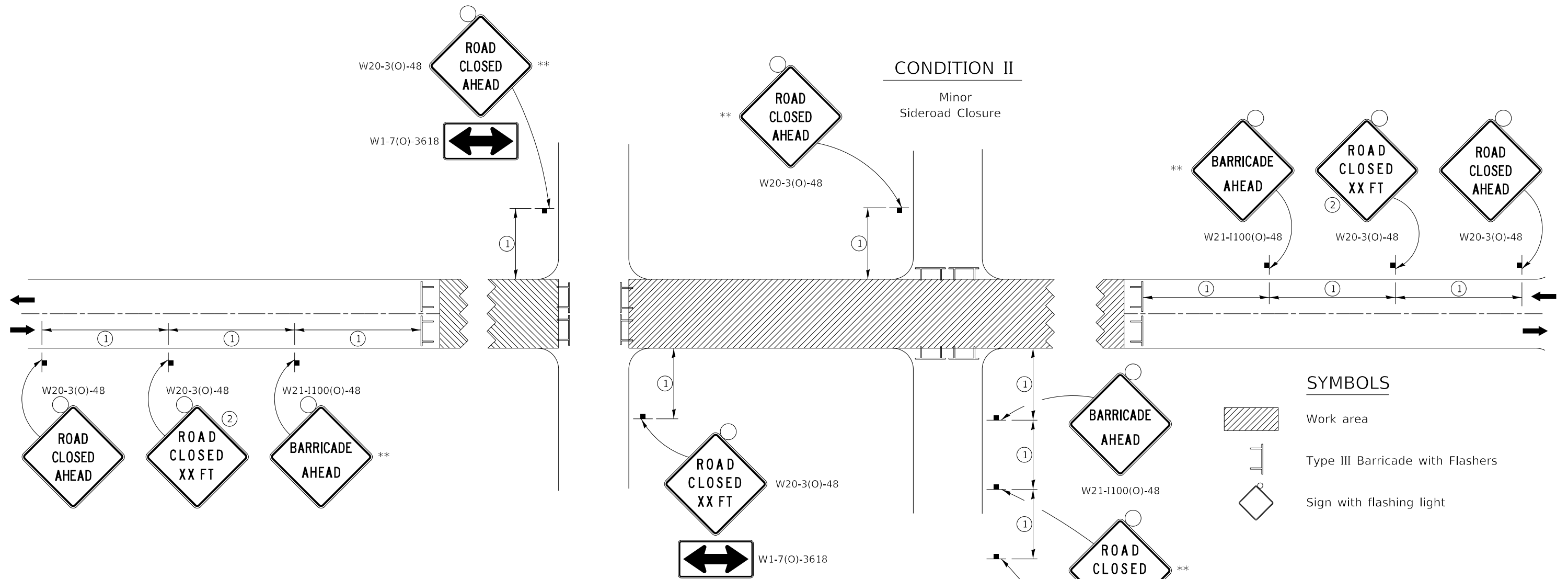
USER NAME =	DESIGNED -	REVISED -
PLOT SCALE =	CHECKED -	REVISED -
PLOT DATE =	DRAWN -	REVISED -
	CHECKED -	REVISED -

STATE OF ILLINOIS  
DEPARTMENT OF TRANSPORTATION




SN 098-0067 YORKTOWN ROAD OVER I-88  
DECK REPAIRS

F.A.I. RTE.	SECTION	COUNTY	TOTAL SHEETS	SHEET NO.
88	(195-2HV)BR	WHITESIDE	6	5
SN 098-0067		CONTRACT NO. 64S62		
ILLINOIS FED. AID PROJECT				

# TRAFFIC CONTROL FOR ROAD CLOSURE



## SYMBOLS

-  Work area
-  Type III Barricade with Flashers
-  Sign with flashing light

## GENERAL NOTES

Longitudinal dimensions may be adjusted to fit field conditions.

Side roads requiring all three signs as shown in CONDITION I (Major Sideroad Closure), shall be listed in the special provision.

\*\* Where local access is to be maintained, barricades are to be set up as shown in "Road Closed To Thru Traffic". Type III Barricades and R11-2-4830 signs shall be as shown in "Road Closed To All Traffic" detail on Highway Standard 701901.

All dimensions are in inches unless otherwise shown.

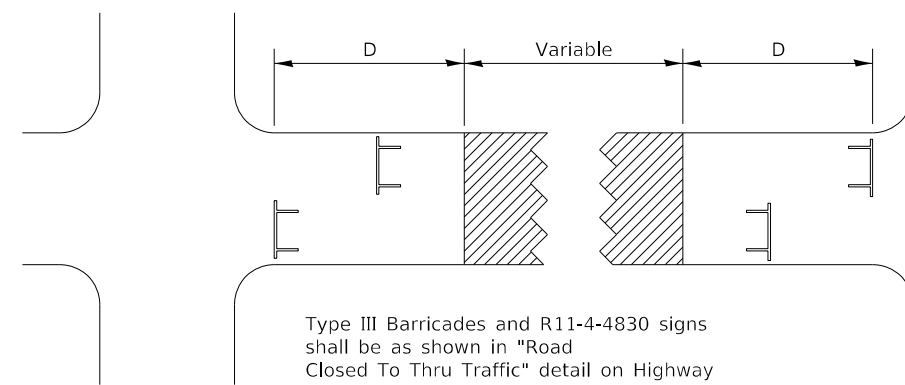
①

SIGN SPACING TABLE	
Posted Speed	Sign Spacing
45 MPH and above	500'
Below 45 MPH	250'

②

SIGN LEGEND	
Posted Speed Limit	Distance
45 MPH and above	1000'
Below 45 MPH	500'

## ROAD CLOSED TO THRU TRAFFIC BARRICADE SET UP



Type III Barricades and R11-4-4830 signs shall be as shown in "Road Closed To Thru Traffic" detail on Highway Standard 701901. If the distance "D" exceeds 2000' an additional set of barricades and R11-4-4830 shall be placed at each end of the work area.

## TYPICAL APPLICATION FOR ROAD CLOSURE

FILE NAME: District 2 Standard	USER NAME = IDOT/District 2	DESIGNED -	REVISED - 8-03-17	STATE OF ILLINOIS DEPARTMENT OF TRANSPORTATION	REGION 2 / DISTRICT 2 STANDARD			F.A. RTE.	SECTION	COUNTY	TOTAL SHEETS	SHEET NO.
	PLOT SCALE = 1,0000' / in.	DRAWN -	REVISED - 1-05-16		88	(195-2HVB) BR	WHITESIDE	6	6			
PLOT DATE = 5/14/2020	CHECKED -	REVISED - 8-27-13	REVISED - 10-17-11	SCALE:	SHEET	OF	SHEETS	STA.	TO	STA.	ILLINOIS FED. AID PROJECT CONTRACT NO. 64R32	