

STATE OF ILLINOIS
DEPARTMENT OF TRANSPORTATION

F.A.P. RTE.	SECTION	COUNTY	TOTAL SHEETS	SHEET NO.
646	(122)CJS	BUREAU	6	1
		ILLINOIS	CONTRACT NO. 66M88	

INDEX

1. COVER SHEET
2. GENERAL NOTES
3. SUMMARY OF QUANTITIES
4. TYPICAL SECTIONS
5. SCHEDULES
6. DETAILS

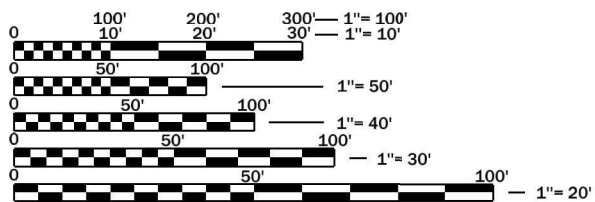
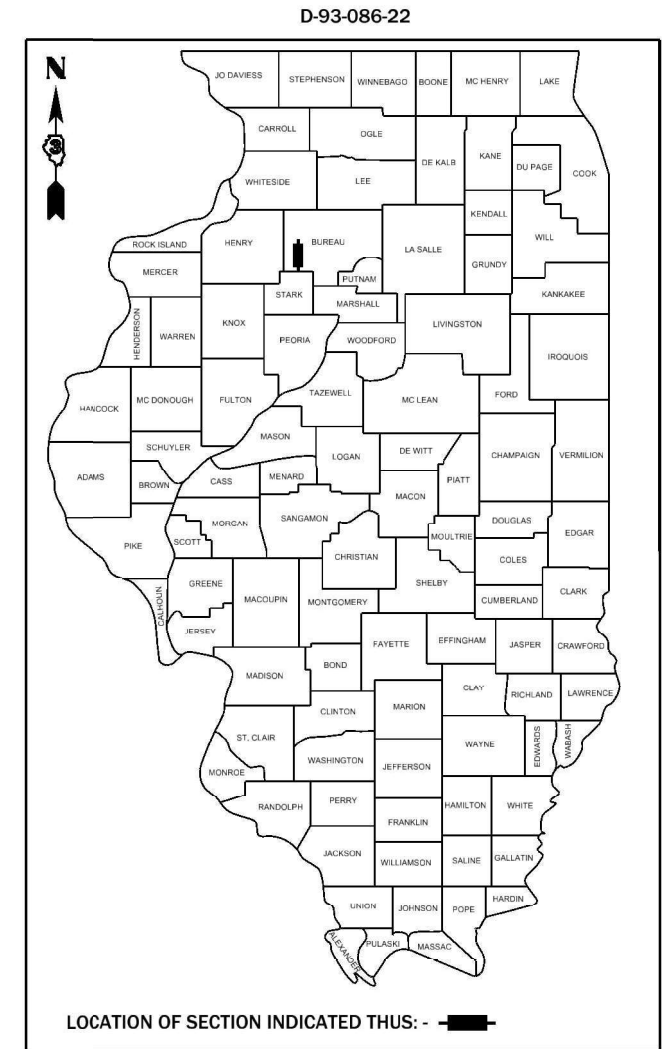
LIST OF ILLINOIS DOT HIGHWAY STANDARDS

- | | |
|-----------|--|
| 000001-08 | STANDARD SYMBOLS, ABBREVIATIONS AND PATTERNS |
| 001006 | DECIMAL OF AN INCH AND OF A FOOT |
| 701001-02 | OFF-ROAD OPERATIONS 2L, 2W, MORE THAN 15' AWAY |
| 701006-05 | OFF-ROAD OPERATIONS 2L, 2W, 15' TO 24" FROM PAVEMENT EDGE |
| 701301-04 | LANE CLOSURE, 2L, 2W, SHORT TIME OPERATIONS |
| 701306-04 | LANE CLOSURE, 2L, 2W, SLOW MOVING OPERATIONS DAY ONLY, FOR SPEEDS ≥ 45 MPH |
| 701311-03 | LANE CLOSURE, 2L, 2W, MOVING OPERATIONS - DAY ONLY |
| 701901-09 | TRAFFIC CONTROL DEVICES |

PROPOSED HIGHWAY PLANS

FAP ROUTE 646 (IL 40) SECTION (122)CJS PROJECT STP-5C09(060) CRACK & JOINT SEALING BUREAU COUNTY

C-93-108-22



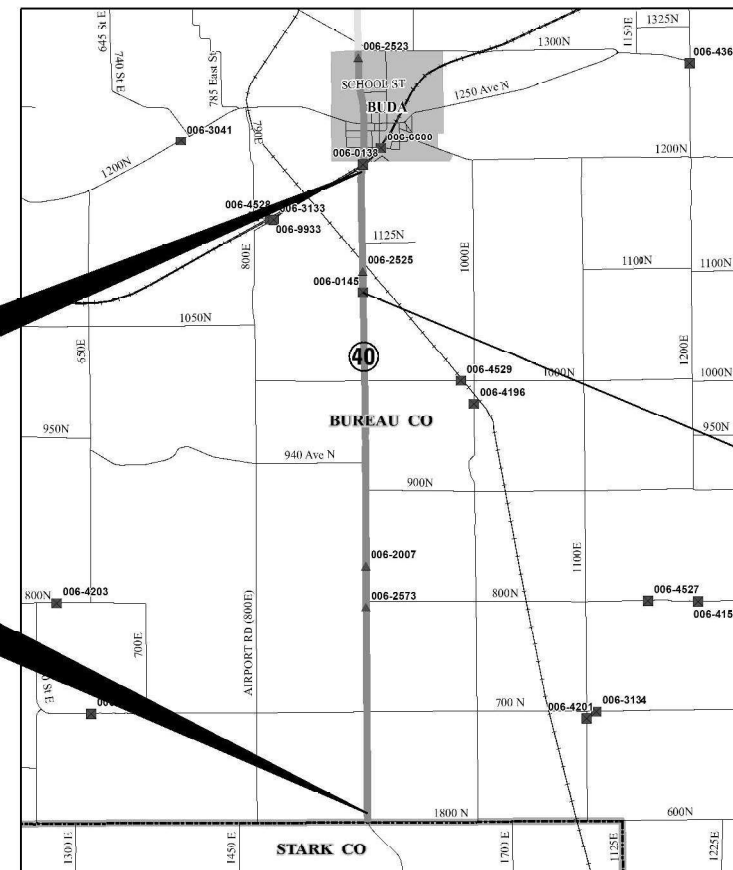
FULL SIZE PLANS HAVE BEEN PREPARED USING STANDARD ENGINEERING SCALES. REDUCED SIZED PLANS WILL NOT CONFORM TO STANDARD SCALES. IN MAKING MEASUREMENTS ON REDUCED PLANS, THE ABOVE SCALES MAY BE USED.

J.U.L.I.E.
JOINT UTILITY LOCATION INFORMATION FOR EXCAVATION
1-800-892-0123
OR 811

PROJECT ENGINEER: JOSEPH KANNEL, P.E.
UNIT CHIEF: DARCY MITCHELL
DISTRICT 3 NO. (815) 434-6131
CONTRACT NO. 66M88

PROJECT BEGINS
STA. 165+97

PROJECT ENDS
STA. 478+50



OMISSION
S.N. 006-0145
STA 225+86 - STA 227+04

GROSS LENGTH = 31,838.4 FT. = 6.03 MILE
NET LENGTH = 31,520.4 FT. = 5.97 MILE

FUNCTION CLASSIFICATION
MINOR ARTERIAL

2021 ADT = 1250
P.V. = 74.8% S.U. = 7.2% M.U. = 18.0%

STATE OF ILLINOIS
DEPARTMENT OF TRANSPORTATION

SUBMITTED December 11, 2023

[Signature] REGIONAL ENGINEER
February 2, 2024

[Signature] ENGINEER OF DESIGN AND ENVIRONMENT
February 2, 2024

[Signature] DIRECTOR OF HIGHWAYS PROJECT IMPLEMENTATION

**PRINTED BY THE AUTHORITY
OF THE STATE OF ILLINOIS**

GENERAL NOTES

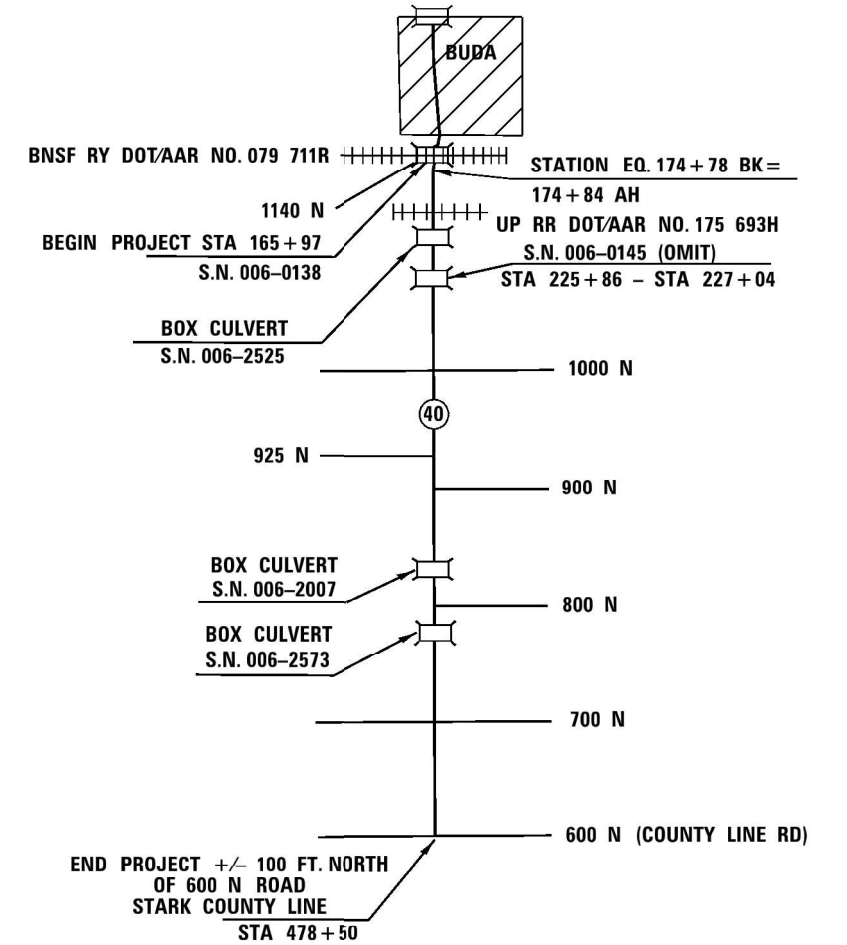
PLAN DIMENSIONS AND DETAILS RELATIVE TO EXISTING PLANS ARE SUBJECT TO NOMINAL CONSTRUCTION VARIATIONS. THE CONTRACTOR SHALL FIELD VERIFY EXISTING DIMENSIONS AND DETAILS AFFECTING NEW CONSTRUCTION AND MAKE NECESSARY APPROVED ADJUSTMENTS PRIOR TO CONSTRUCTION OR ORDERING OF MATERIALS. SUCH VARIATIONS SHALL NOT BE CAUSE FOR ADDITIONAL COMPENSATION FOR A CHANGE IN SCOPE OF WORK; HOWEVER, THE CONTRACTOR WILL BE PAID FOR THE QUANTITY ACTUALLY FURNISHED AT THE UNIT PRICE BID FOR THE WORK.

ANY REFERENCE TO A STANDARD IN THESE PLANS SHALL BE INTERPRETED TO MEAN THE EDITION AS INDICATED BY THE SUBNUMBER SHOWN IN THE LIST OF STANDARDS OR THE COPY INCLUDED IN THESE PLANS.

THE FOLLOWING RATES OF APPLICATION HAVE BEEN USED IN CALCULATING PLAN QUANTITIES:

CRACK FILLING	0.5	POUNDS / FOOT
---------------	-----	---------------

COMMITMENTS:
NONE



STATE OF ILLINOIS
DEPARTMENT OF TRANSPORTATION
DISTRICT THREE
AS BUILT INFORMATION

SUPERVISING CONSTRUCTION FIELD ENGINEER

RESIDENT ENGINEER / TECHNICIAN

START & END DATES
OF CONSTRUCTION:

INSPECTORS:

STATE OF ILLINOIS
DEPARTMENT OF TRANSPORTATION
DISTRICT THREE

PREPARED BY: _____
DISTRICT STUDIES & PLANS ENGINEER

DATE: _____

EXAMINED BY: _____
DISTRICT CONSTRUCTION ENGINEER

DISTRICT MATERIALS ENGINEER

DISTRICT OPERATIONS ENGINEER

**STATE OF ILLINOIS
DEPARTMENT OF TRANSPORTATION**

GENERAL NOTES

SCALE: _____ SHEET _____ OF _____ SHEETS STA. _____ TO STA. _____

F.A.P. RTE.	SECTION	COUNTY	TOTAL SHEETS	SHEET NO.
646	(122)CIS	BUREAU	6	2
CONTRACT NO. 66M88			ILLINOIS FED. AID PROJECT	

Model: Default
 File: \\miller-planning.com\pwwork\pwwork\DOT\Office\District_3\Projects\10366488\CADD\10366488.dwg
 Plot Date: 12/5/23

CODE NO.	ITEM	UNIT	TOTAL QUANTITY	CONSTR. CODE	
				80% FED	20% STATE
				NONE	
				0005	
				RURAL	
45100100	CRACK ROUTING (PAVEMENT)	FOOT	35531		35531
45100200	CRACK FILLING	POUND	17765		17765
67100100	MOBILIZATION	L SUM	1		1
70100460	TRAFFIC CONTROL AND PROTECTION, STANDARD 701306	L SUM	1		1
* 78001110	PAINT PAVEMENT MARKING - LINE 4"	FOOT	15962		15962
* 78001130	PAINT PAVEMENT MARKING - LINE 6"	FOOT	8736		8736
Z0030850	TEMPORARY INFORMATION SIGNING	SQ FT	42		42
Z0048665	RAILROAD PROTECTIVE LIABILITY INSURANCE	L SUM	1		1

* SPECIALTY ITEMS

FILE NAME =	USER NAME = anthony.grunstad	DESIGNED -	REVISED -	STATE OF ILLINOIS DEPARTMENT OF TRANSPORTATION	SUMMARY OF QUANTITIES			F.A.P. RTE.	SECTION	COUNTY	TOTAL SHEETS	SHEET NO.
pw:\ildot-pw.bentley.com\PWIDOT\Documents\IDOT Office\District 3\Projects\D366M88\CAD\data\D366M88-sht-cover.dgn	DRAWN -	REVISED -	646					(122)CJS	LASALLE	6	3	
Default	PLOT SCALE = 100.0000' / in.	CHECKED -	REVISED -		SCALE: _____ SHEET 1 OF 1 SHEETS STA. _____ TO STA. _____			ILLINOIS FED. AID PROJECT		CONTRACT NO. 66M88		
	PLOT DATE = 12/8/23	DATE -	REVISED -									

PAVEMENT MARKING SCHEDULE					
LOCATION				PAINT 4" YELLOW	PAINT 6" YELLOW
STA				FOOT	FOOT
129+00	TO	174+78	SKIP LINES		1145
STA. EQ.	TO	174+78 BK= 174+84 AH			
174+84	TO	478+50	SKIP LINES		7592
NO PASSING ZONES (1)					
149+86	TO	157+78	RT	792.0	
157+78	TO	176+20	RT & LT	3684	
176+20	TO	184+12	RT	792	
184+12	TO	194+68	LT	1056	
207+88	TO	210+52	RT	264	
210+52	TO	215+80	LT	528	
252+76	TO	263+32	RT	1056	
263+32	TO	268+60	LT	528	
268+60	TO	271+24	RT & LT	528	
271+24	TO	276+52	RT	528	
276+52	TO	279+16	RT & LT	528	
279+16	TO	287+08	LT	792	
289+72	TO	297+64	RT	792	
297+64	TO	300+28	RT & LT	528	
300+28	TO	313+48	LT	1320	
456+04	TO	478+50	RT	2246	
TOTAL				15962	8736

(1) R.E. TO VERIFY NO PASSING ZONES PRIOR TO MILLING OPERATION

CENTERLINE CRACK ROUTING & FILLING					
STA. TO STA.	LENGTH	WIDTH	CRACK ROUTING (PVMT)	CRACK FILLING	
	FT	FT	FT	POUNDS	
163+58	165+97	249	26	SN 006-0138	
165+97	174+78	881	26	881.0	441
STA. EQ.	174+78=174+84				
174+84	224+86	5002	26	5002.0	2501
224+86	225+86	100	26	100.0	50
225+86	227+04	118	26	OMIT SN 006-0145	
227+04	228+04	100	26	100.0	50
228+04	478+50	25046	26	25046.0	12523
TOTALS		31496		32063	16031

TRANSVERSE CRACK ROUTING AND FILLING				
LOCATION	CRACKS	WIDTH	CRACK ROUTING (PVMT)	CRACK FILLING
	EACH	FT	FT	POUNDS
NB	133	13	1729.0	865
SB	126	13	1638.0	819
	259		3468	1734

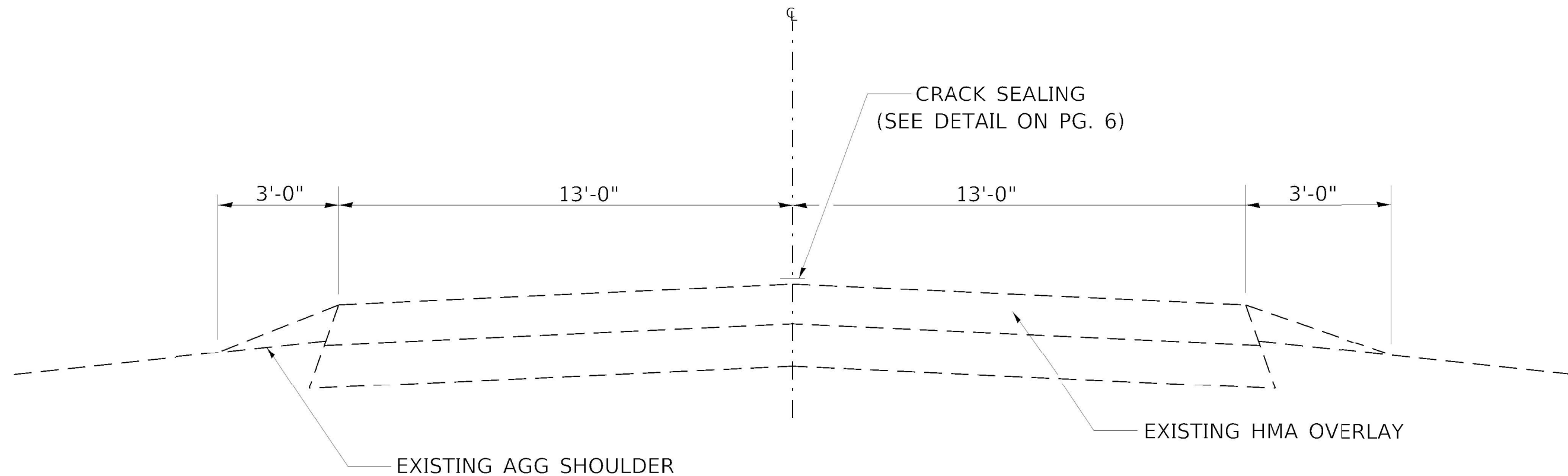
Model: Default
 File: \\miller-pw-bentley.com\pwwdott\documents\DOT\offices\Director_3\Projects\0366M88\CADD\0366M88-01-Cover.dgn

USER NAME = anthony.grunstad	DESIGNED - _____	REVISED - _____
	DRAWN - _____	REVISED - _____
PLOT SCALE = 100.0000' / in.	CHECKED - _____	REVISED - _____
PLOT DATE = 12/8/23	DATE - _____	REVISED - _____

**STATE OF ILLINOIS
DEPARTMENT OF TRANSPORTATION**

SCHEDULES	
SCALE: _____	SHEET ____ OF ____ SHEETS STA. _____ TO STA. _____

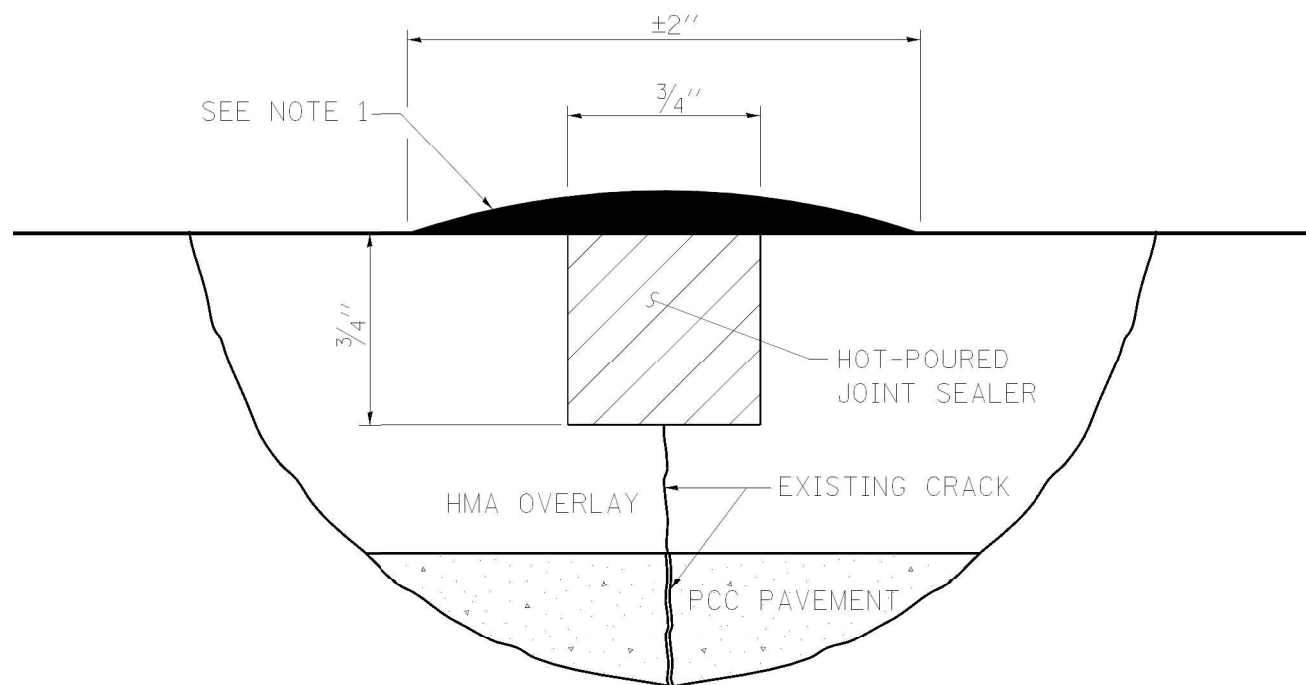
F.A.P. RTE.	SECTION	COUNTY	TOTAL SHEETS	SHEET NO.
646	(122)CIS	BUREAU	6	4
			CONTRACT NO. 66M88	
ILLINOIS FED. AID PROJECT				



TYPICAL SECTION

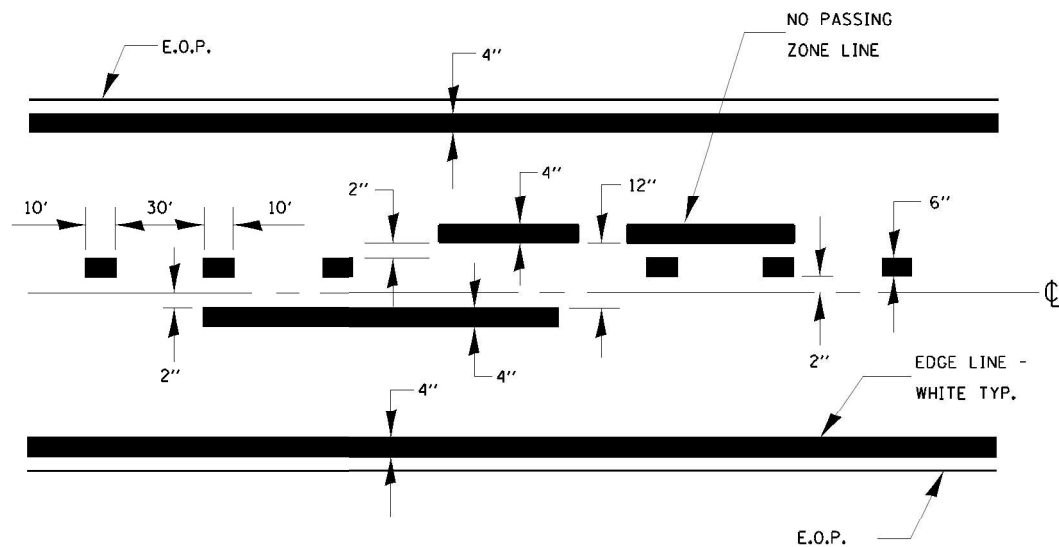
NOTE:
ADDITIONAL CRACK SEALING AT
RANDOM TRANSVERSE LOCATIONS

FILE NAME =	USER NAME = anthony.grunstad	DESIGNED -	REVISED -	STATE OF ILLINOIS DEPARTMENT OF TRANSPORTATION	TYPICAL SECTIONS		F.A.P. RTE.	SECTION	COUNTY	TOTAL SHEETS	SHEET NO.
pw:\illdot-pw.bentley.com\PWIDOT\Documents\IDOT Office\District 3\Projects\D366M88\CAD\data\D366M88-sht-cover.dgn		DRAWN -	REVISED -		646	(122)CJS	BUREAU	6	5		
Default	PLOT SCALE = 100.0000' / in.	CHECKED -	REVISED -		CONTRACT NO. 66M88			ILLINOIS	FED. AID PROJECT		
	PLOT DATE = 12/8/23	DATE -	REVISED -		SCALE: _____	SHEET 1 OF 1 SHEETS	STA. _____ TO STA. _____				



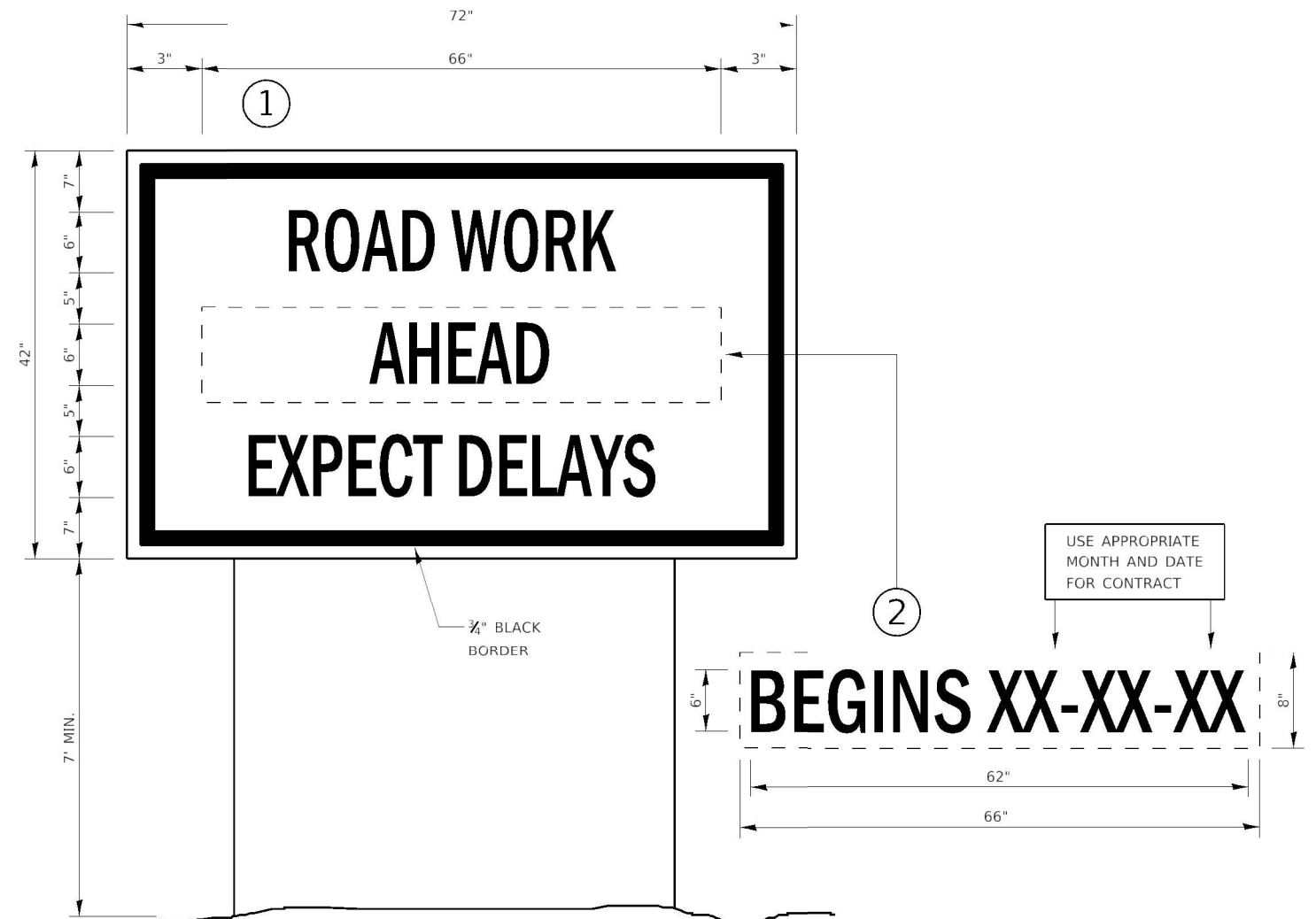
CRACK ROUTING AND SEALING DETAIL

NOTE 1:
 THE CRACK OR JOINT SHALL BE SLIGHTLY OVERFILLED AND IMMEDIATELY SQUEEGEED TO PROVIDE A "BAND-AID" TYPE EFFECT APPROXIMATELY TWICE THE WIDTH OF THE ROUTED CRACK OR OPEN CRACK/JOINT FLUSH WITH PAVEMENT SURFACE AND WITH THE EDGES FEATHERED OUT.



CENTERLINE & NO PASSING ZONE LINES - YELLOW

PAVEMENT MARKING



TEMPORARY INFORMATION SIGNING

NOTES:

1. USE 6" D BLACK LETTERING ON FLUORESCENT ORANGE BACKGROUND.
2. ERECT SIGNS AT LOCATIONS IN ADVANCE OF THE "ROAD CONSTRUCTION AHEAD" SIGNS AS DIRECTED BY THE ENGINEER.
3. ERECT SIGN ① WITH INSTALLED PANEL ② A MINIMUM OF ONE WEEK PRIOR TO THE START OF THE LANE CLOSURE.
4. REMOVE PANEL ② ON THAT DATE.
5. SEE SPECIAL PROVISION "TEMPORARY INFORMATION SIGNING" FOR ADDITIONAL INFORMATION.
6. WILL BE PAID FOR PER SQ FT AS "TEMPORARY INFORMATION SIGNING". EACH SIGN = 21 SQ FT AND THE DATE PANEL ② WILL NOT BE MEASURED SEPARATELY FOR PAYMENT.

FILE NAME =	USER NAME = anthony.grunstad	DESIGNED -	REVISED -	STATE OF ILLINOIS DEPARTMENT OF TRANSPORTATION	DETAILS	F.A.P. RTE.	SECTION	COUNTY	TOTAL SHEETS	SHEET NO.
pw:\ildot-pw.bentley.com\PWIDOT\Documents\IDOT Office\District 3\Projects\D366M88\CAD\data\D366M88-sht-cover.dgn	DRAWN -	REVISED -	646			(122)CJS		6	6	
PLOT SCALE = 100.0000' / in.	CHECKED -	REVISED -	CONTRACT NO. 66M88							
DATE = 12/5/23	DATE -	REVISED -	ILLINOIS FED. AID PROJECT							
Default				SCALE: _____	SHEET 1 OF 1 SHEETS	STA. _____	TO STA. _____			