

STATE OF ILLINOIS
DEPARTMENT OF TRANSPORTATION

F.A. RTE.	SECTION	COUNTY	TOTAL SHEETS	SHEET NO.
N/A		MCLEAN	13	1
		ILLINOIS	CONTRACT NO. 70F49	

FOR INDEX OF SHEETS, SEE SHEET NO. 2
FOR SUMMARY OF QUANTITIES, SEE SHEET NO. 3

PROPOSED
HIGHWAY PLANS

LEROY, TOWANDA, BLOOMINGTON STORAGE FACILITIES
SECTION LEROY, TOWANDA, BLOOM IMP 2024-2
MISCELLANEOUS PROJECTS
MCLEAN COUNTY
PUSH WALL AT STORAGE FACILITIES

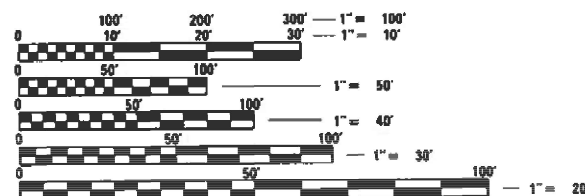
D-95-046-21



TOWNSHIP
EMPIRE, BLOOMINGTON, TOWANDA

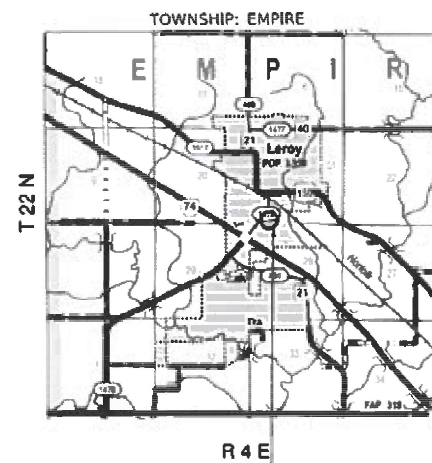
C-95-059-21

PROJECT LOCATIONS:

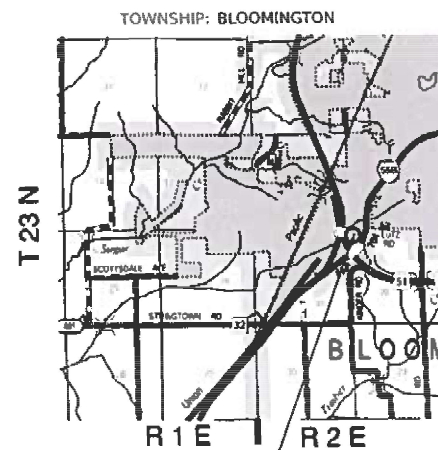


FULL SIZE PLANS HAVE BEEN PREPARED USING STANDARD ENGINEERING SCALES. REDUCED SIZED PLANS WILL NOT CONFORM TO STANDARD SCALES. IN MAKING MEASUREMENTS ON REDUCED PLANS, THE ABOVE SCALES MAY BE USED.

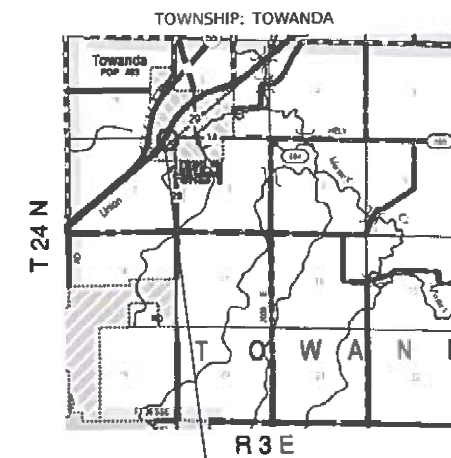
J.U.L.I.E.
JOINT UTILITY LOCATION INFORMATION FOR EXCAVATION
1-800-892-0123
OR 811



LEROY STORAGE FACILITY
501 S EAST ST.
LE ROY, IL 61752



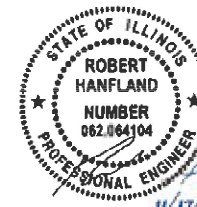
BLOOMINGTON STORAGE FACILITY
2621 S VETERANS PKY
BLOOMINGTON, IL 61701



TOWANDA STORAGE FACILITY
203 OLD U.S. RTE 66
TOWANDA, IL 61776



GROSS LENGTH = N/A FT. = N/A MILE
NET LENGTH = N/A FT. = N/A MILE



ROBERT HANFLAND, P.E.
STATE OF ILLINOIS NO. 062-064104
EXPIRES 11/30/2025

STATE OF ILLINOIS
DEPARTMENT OF TRANSPORTATION

SUBMITTED 11/20 2023
Kensira Barnett REGIONAL ENGINEER
February 2, 2024
Steph A. Etk ENGINEER OF DESIGN AND ENVIRONMENT
February 2, 2024
Steph McQuinn DIRECTOR OF HIGHWAYS PROJECT IMPLEMENTATION

PRINTED BY THE AUTHORITY
OF THE STATE OF ILLINOIS

PROJECT ENGINEER JASON STULTS, P.E.
PROJECT MANAGER JASON GOBLE
(217) 465-4181



CONTRACT NO. 70F49

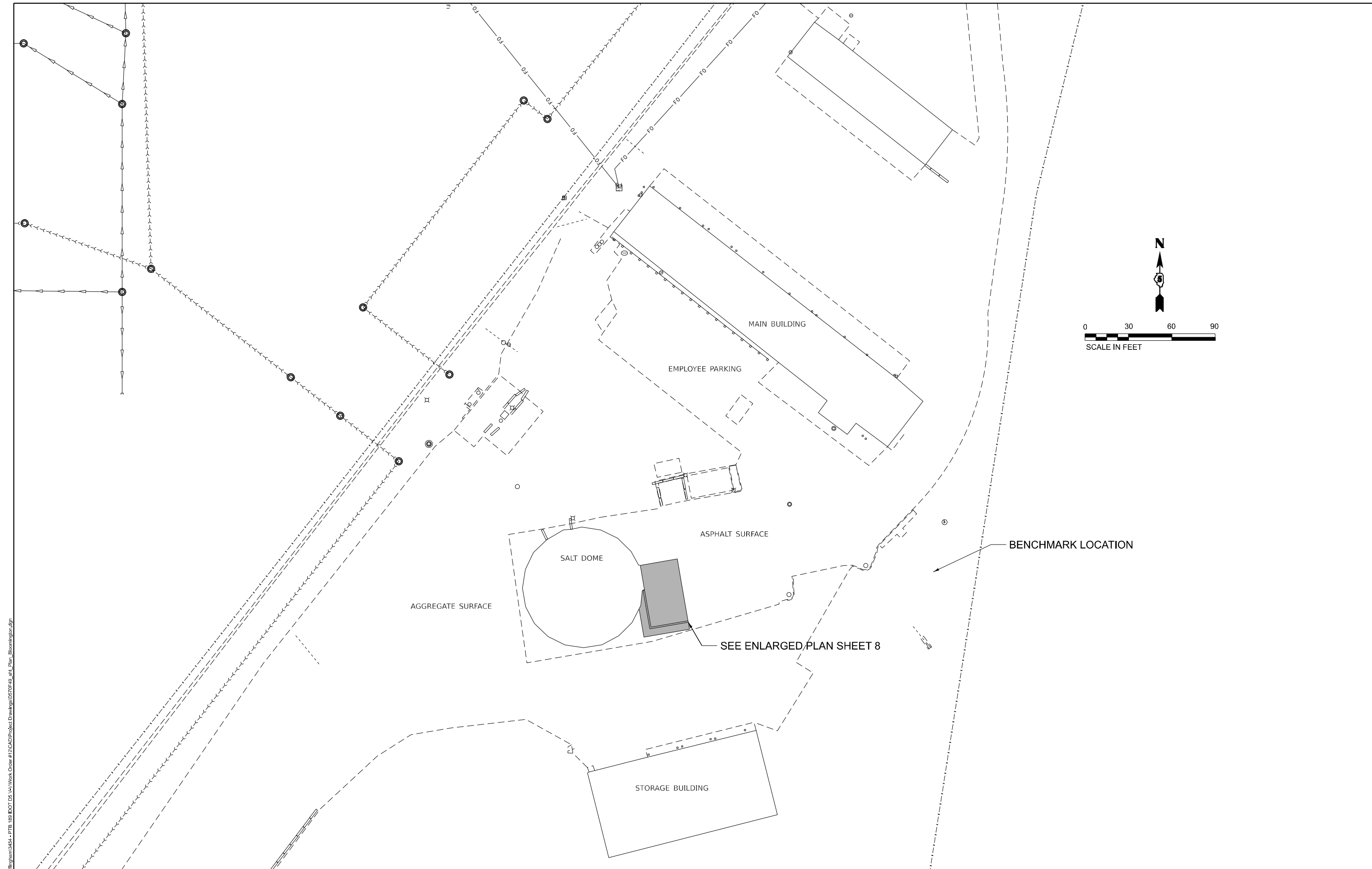
SUMMARY OF QUANTITIES

CODE NO.	ITEM	UNIT	TOTAL QUANTITY	CONSTRUCTION CODE		
				MCLEAN COUNTY STATE 100%	MCLEAN COUNTY STATE 100%	MCLEAN COUNTY STATE 100%
				LEROY	BLOOMINGTON	TOWANDA
				0044 RURAL	0044 URBAN	0044 RURAL
20200100	EARTH EXCAVATION	CU YD	421	117	142	162
44000100	PAVEMENT REMOVAL	SQ YD	457	114	161	182
50300225	CONCRETE STRUCTURES	CU YD	196.2	55.6	66.3	74.3
50800205	REINFORCEMENT BARS, EPOXY COATED	POUND	10250	3380	3380	3490
* 66900200	NON-SPECIAL WASTE DISPOSAL	CU YD	168	56	56	56
* 66900530	SOIL DISPOSAL ANALYSIS	EACH	3	1	1	1
* 66901001	REGULATED SUBSTANCES PRE-CONSTRUCTION PLAN	L SUM	1	0.34	0.33	0.33
* 66901003	REGULATED SUBSTANCES FINAL CONSTRUCTION REPORT	L SUM	1	0.34	0.33	0.33
* 66901006	REGULATED SUBSTANCES MONITORING	CAL DA	6	2	2	2
67100100	MOBILIZATION	L SUM	1	0.34	0.33	0.33
Z0013798	CONSTRUCTION LAYOUT	L SUM	1	0.34	0.33	0.33

* DENOTES SPECIALTY ITEM

MODEL: D:\b\j\ FILE NAME: P:\E\g\p\m\364 - PTB 189 IDOT DS \A\Work Code #12\CAD\Project Drawings\0570549_S00.dgn

MODEL: D:\bham\12\CD\Project\Drawings\0570549_ah1_Plan_Bloomington.dgn
 FILE NAME: P:\E\Bham\12\CD\Project\Drawings\0570549_ah1_Plan_Bloomington.dgn



CDI CIVIL DESIGN, INC.
 WBE / DBE
 EFFINGHAM, IL
 LICENSE #184.003222

USER NAME = rhanfland	DESIGNED -	REVISED -
DRAWN - SMH	REVISED -	
PLOT SCALE = 60,000' / 1 in.	CHECKED -	REVISED -
PLOT DATE = 12/5/2023	DATE -	REVISED -

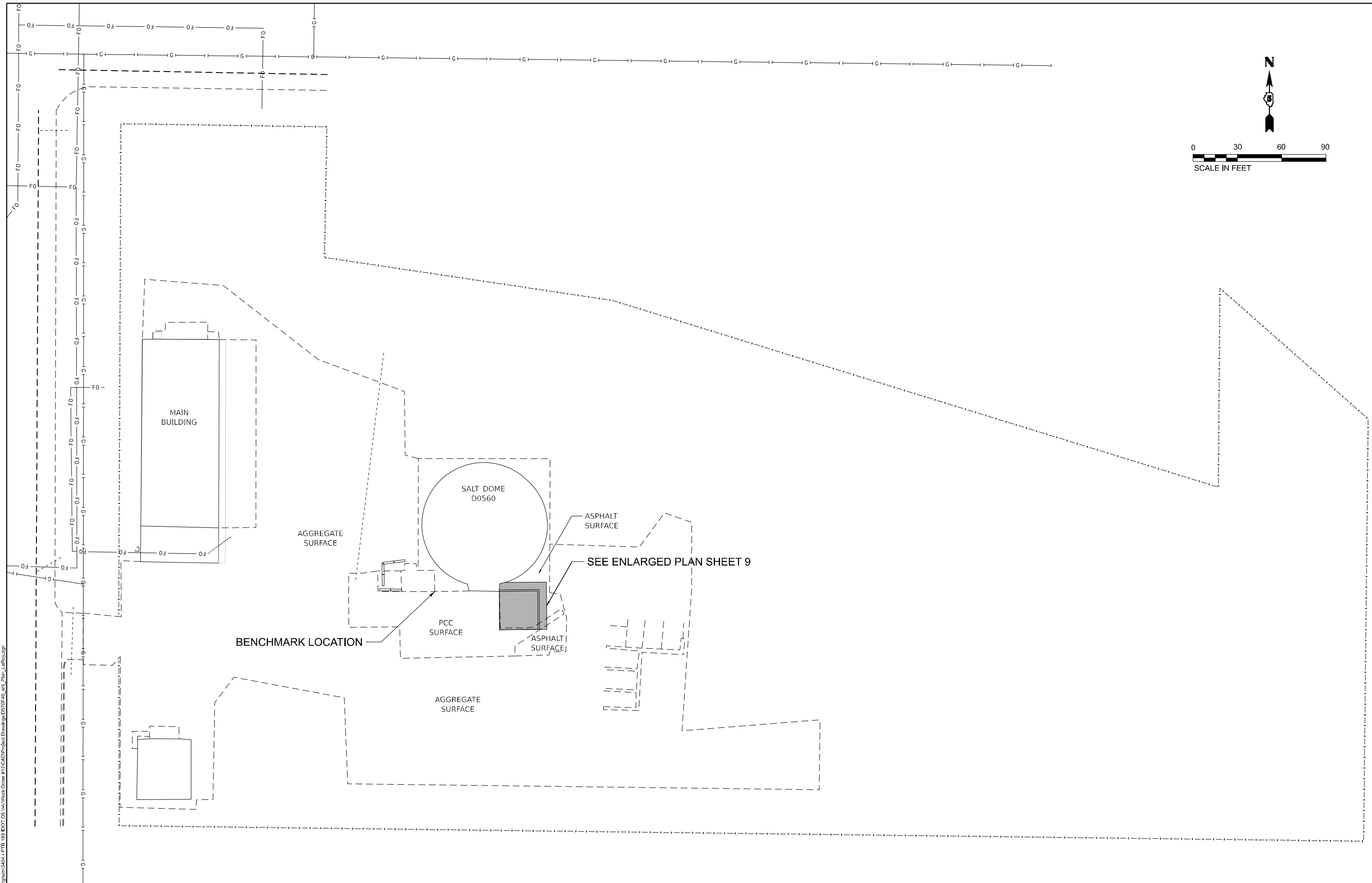
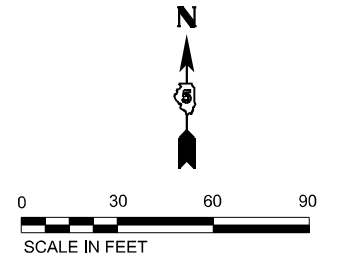
**STATE OF ILLINOIS
 DEPARTMENT OF TRANSPORTATION**

**OVERALL PLAN
 BLOOMINGTON STORAGE FACILITY**


SCALE: 1"=30' SHEET 1 OF 3 SHEETS STA. N/A TO STA. N/A

F.A. RTE.	SECTION	COUNTY	TOTAL SHEETS	SHEET NO.
N/A	*	MCLEAN	13	5
CONTRACT NO. 70F49				
ILLINOIS FED. AID PROJECT				

* LEROY, TOWANDA, BLOOM IMP 2024-2



MODEL: D:\chm\...
 FILE NAME: P:\E\lham3454-PTB-189-189-189\DOT 05\14\Work Order #12\CAD\Project Drawing\0570549.dwg_Plan_Leroy.dgn


CIVIL DESIGN, INC.
 WBE / DBE
 EFFINGHAM, IL
 LICENSE #194-003222

USER NAME = rhanfland
PLOT SCALE = 60,000' / 1" =
PLOT DATE = 12/5/2023

DESIGNED -	REVISED -
DRAWN - SMH	REVISED -
CHECKED -	REVISED -
DATE -	REVISED -

DESIGNED -	REVISED -
DRAWN - SMH	REVISED -
CHECKED -	REVISED -
DATE -	REVISED -

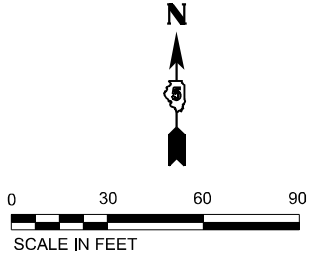
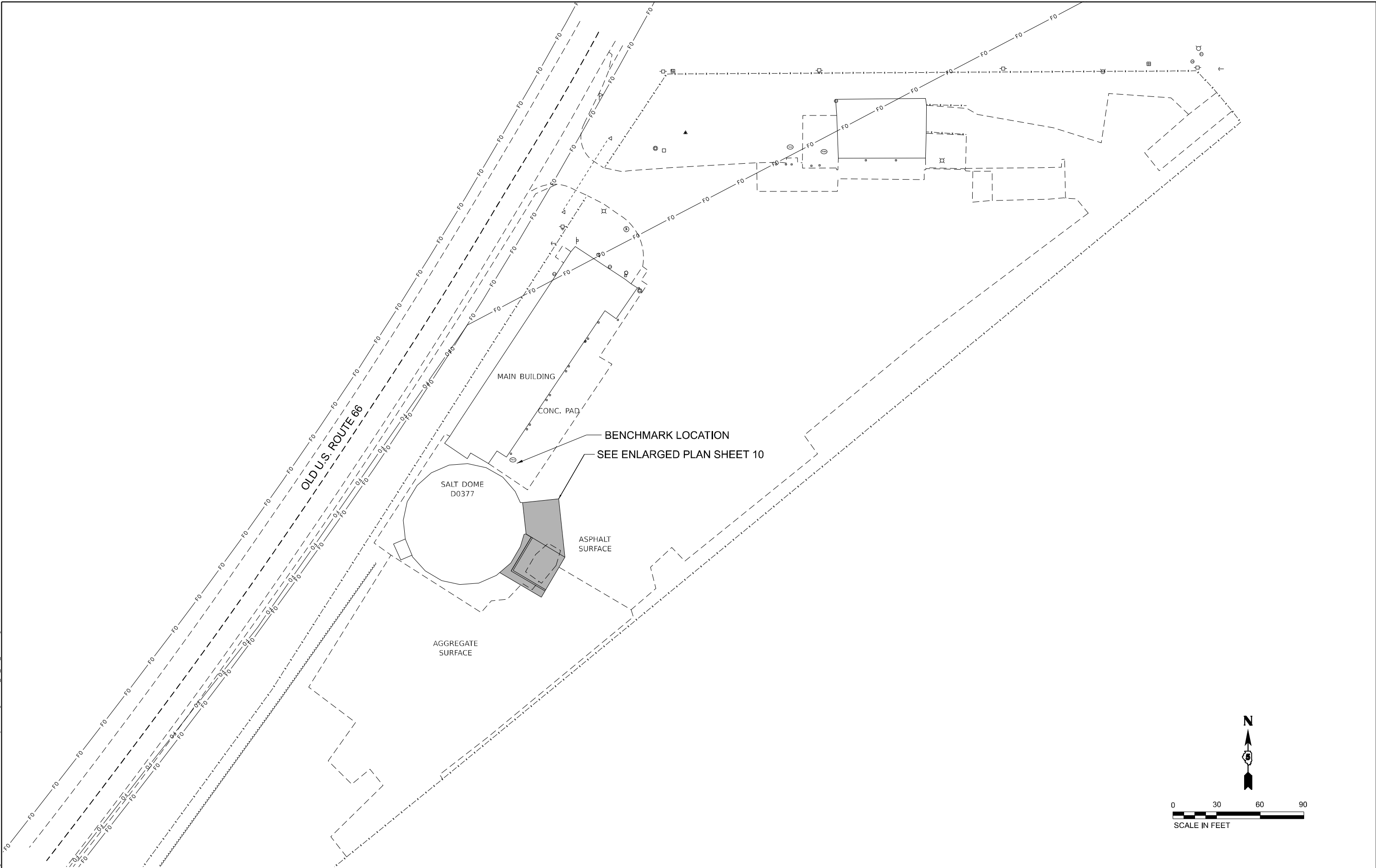
STATE OF ILLINOIS
DEPARTMENT OF TRANSPORTATION

OVERALL PLAN			
LEROY STORAGE FACILITY			
SCALE: 1"=30'	SHEET 2	OF 3 SHEETS	STA. N/A TO STA. N/A

F.A. RTE.	SECTION	COUNTY	TOTAL SHEETS	SHEET NO.
N/A	*	MCLEAN	13	6
CONTRACT NO. 70F49				
ILLINOIS FED. AID PROJECT				

* LEROY, TOWANDA, BLOOM IMP 2024-2

MODEL: D:\shd\...
 FILE NAME: P:\E\Illinois\3464-PTB 189 IDOT 05 14\Work Order #12\CAD\Project Drawing\0570549_ehl_Plan_Towanda.dgn



USER NAME = rhanfland	DESIGNED -	REVISED -
DRAWN - SMH	REVISED -	
PLOT SCALE = 60,000' / 1 in.	CHECKED -	REVISED -
PLOT DATE = 12/5/2023	DATE -	REVISED -

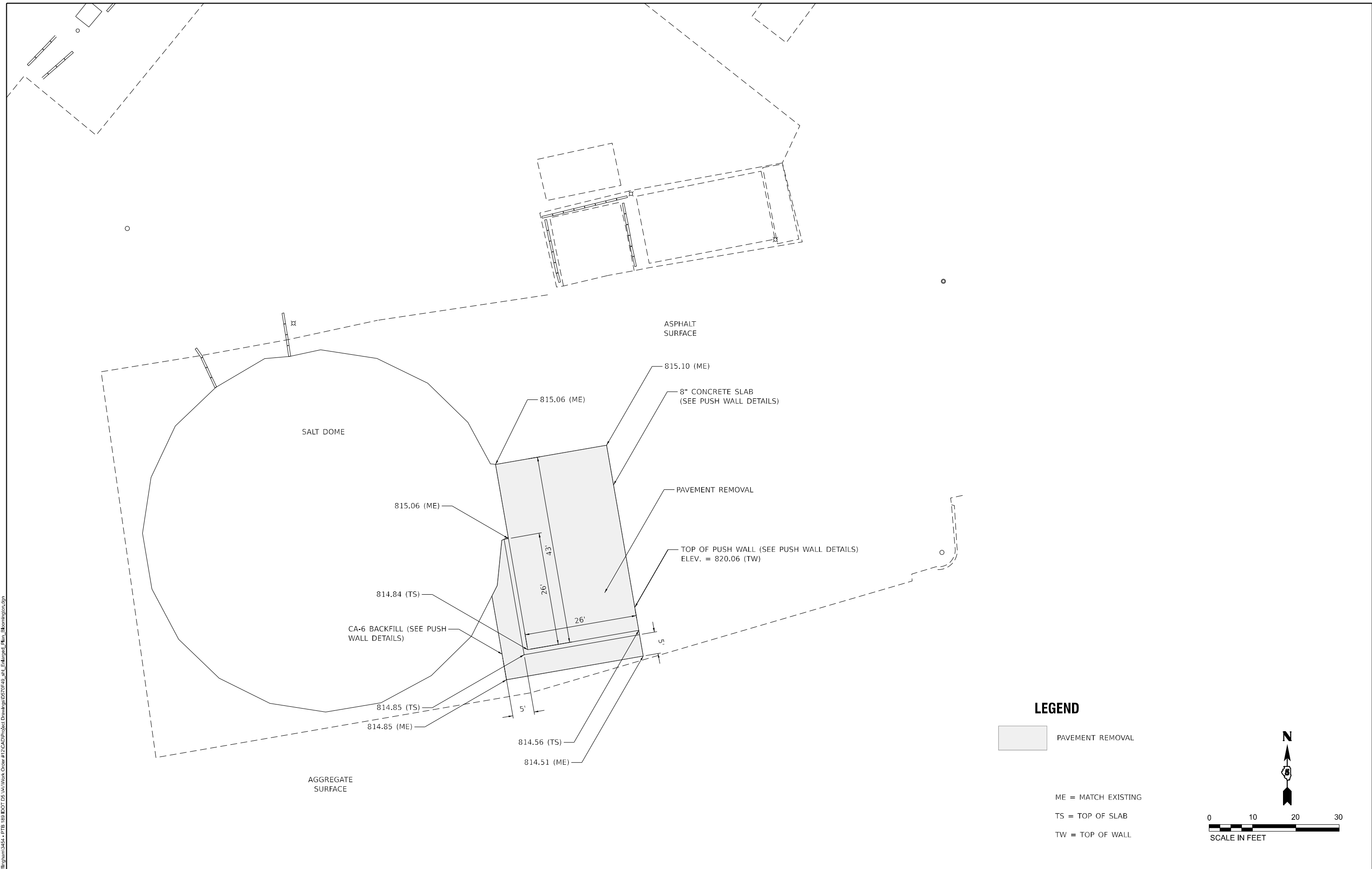
**STATE OF ILLINOIS
 DEPARTMENT OF TRANSPORTATION**

**OVERALL PLAN
 TOWANDA STORAGE FACILITY**

F.A. RTE.	SECTION	COUNTY	TOTAL SHEETS	SHEET NO.
N/A	*	MCLEAN	13	7
CONTRACT NO. 70F49				
SCALE: 1"=30'		SHEET 3 OF 3 SHEETS	STA. N/A	TO STA. N/A

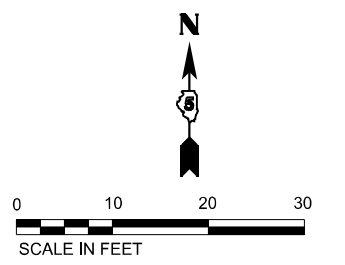
* LEROY, TOWANDA, BLOOM IMP 2024-2

MODEL: D:\chm\...
 FILE NAME: P:\E\Illinois\3454-PTB-189-189\DOT 05\4\Work Order #12\CAD\Project Drawing\0570549_ah1_Enlarged_Plan_Bloomington.dwg



LEGEND

- PAVEMENT REMOVAL
- ME = MATCH EXISTING
- TS = TOP OF SLAB
- TW = TOP OF WALL



USER NAME = rhanfland	DESIGNED -	REVISED -
	DRAWN - SMH	REVISED -
PLOT SCALE = 20,000' / 1" =	CHECKED -	REVISED -
PLOT DATE = 12/5/2023	DATE -	REVISED -

**STATE OF ILLINOIS
 DEPARTMENT OF TRANSPORTATION**

**ENLARGED PLAN
 BLOOMINGTON STORAGE FACILITY**

F.A. RTE.	SECTION	COUNTY	TOTAL SHEETS	SHEET NO.
N/A	*	MCLEAN	13	8
CONTRACT NO. 70F49				
ILLINOIS FED. AID PROJECT				

SCALE: 1"=10' SHEET 1 OF 3 SHEETS STA. N/A TO STA. N/A

* LEROY, TOWANDA, BLOOM IMP 2024-2

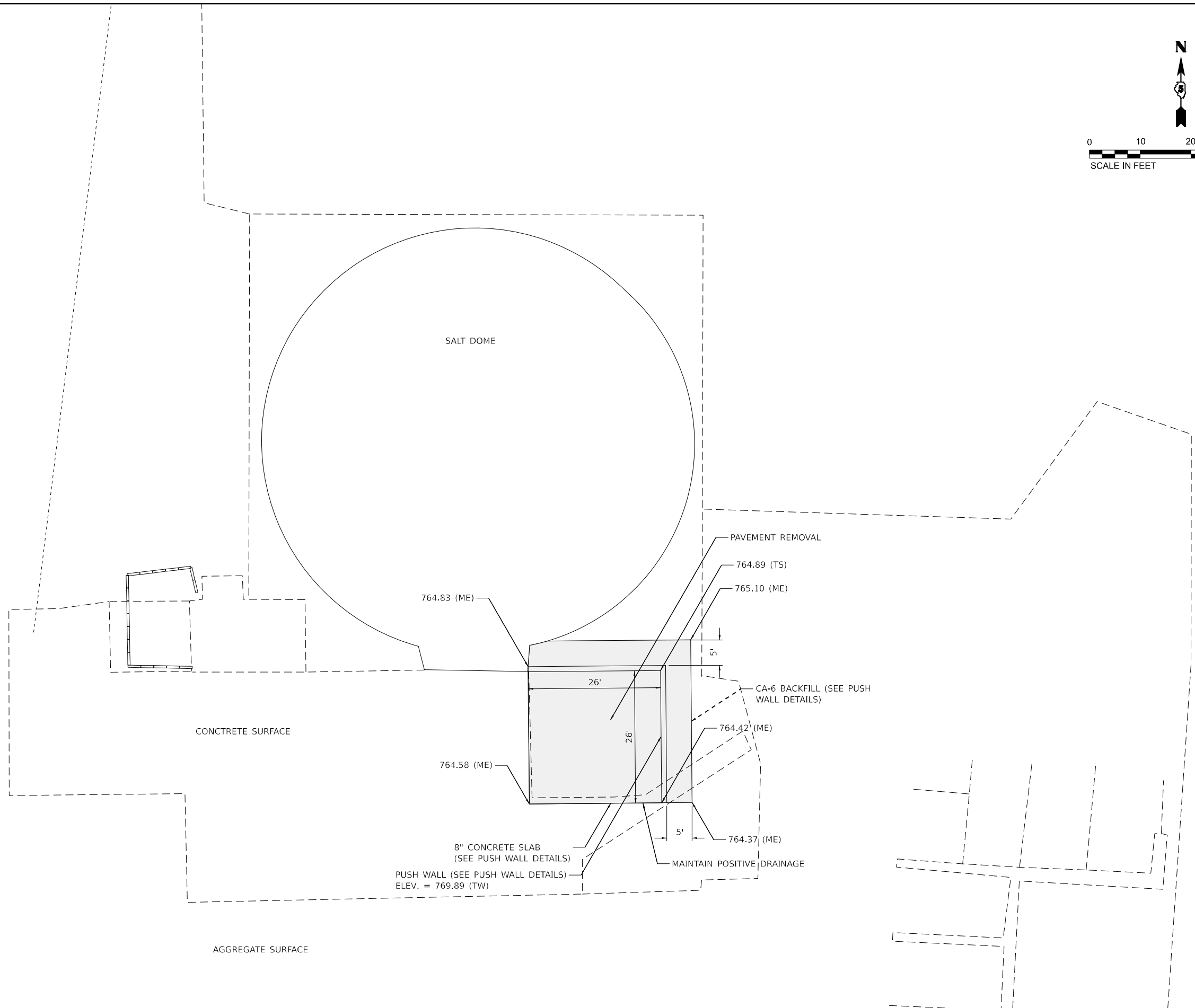
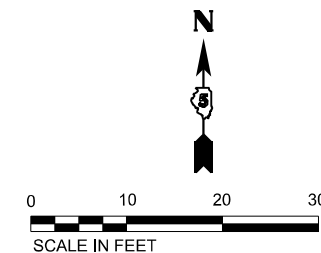
LEGEND

PAVEMENT REMOVAL

ME = MATCH EXISTING

TS = TOP OF SLAB

TW = TOP OF WALL



MODEL: D:\chm\...
 FILE NAME: ...
 USER: ...



USER NAME = rhanfland	DESIGNED -	REVISED -
	DRAWN - SMH	REVISED -
PLOT SCALE = 20,000' / 1"	CHECKED -	REVISED -
PLOT DATE = 12/5/2023	DATE -	REVISED -

STATE OF ILLINOIS
DEPARTMENT OF TRANSPORTATION


ENLARGED PLAN
LEROY STORAGE FACILITY

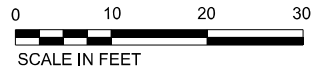
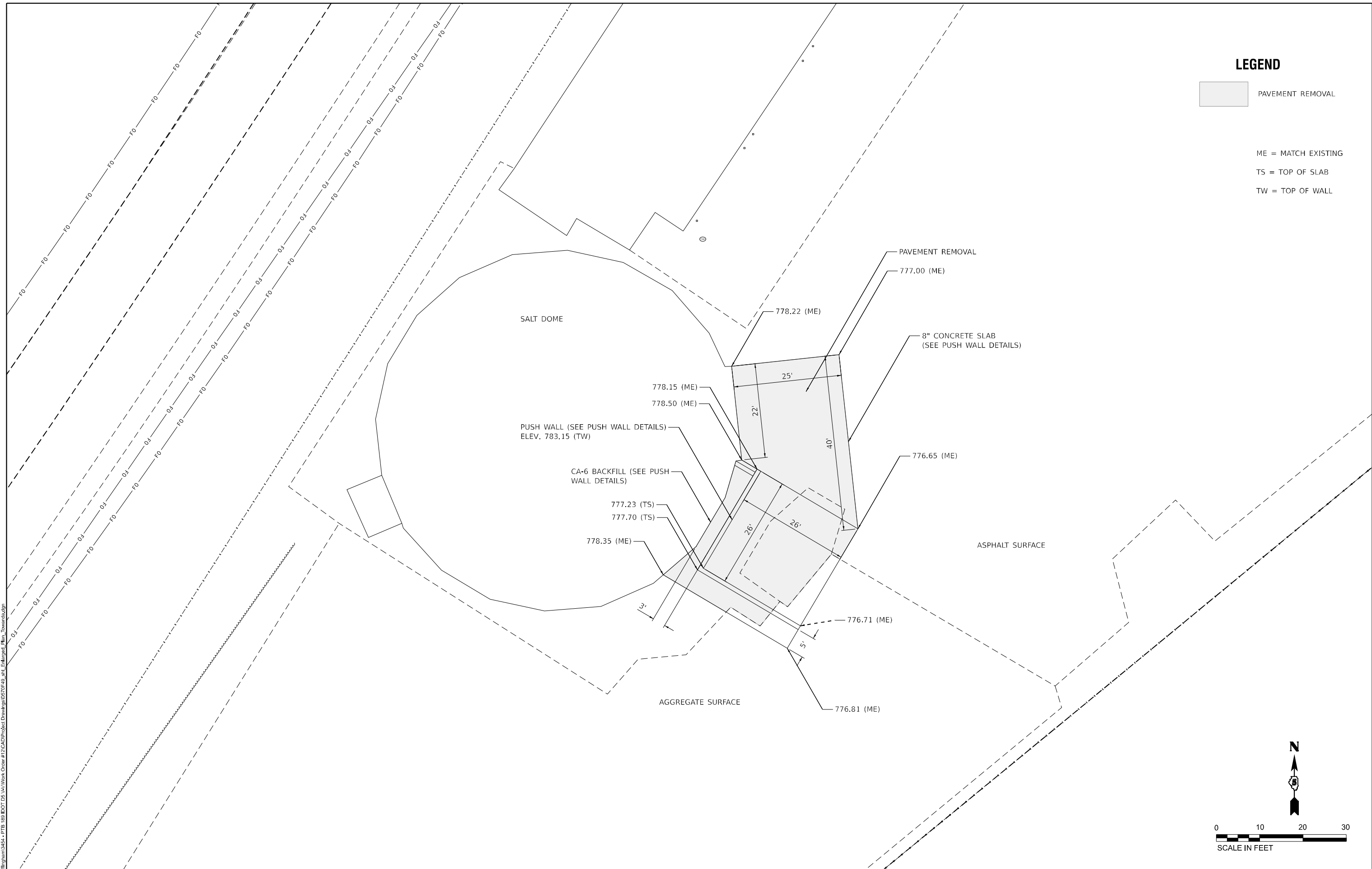
SCALE: 1"=10' SHEET 2 OF 3 SHEETS STA. N/A TO STA. N/A

F.A. RTE.	SECTION	COUNTY	TOTAL SHEETS	SHEET NO.
N/A	*	MCLEAN	13	9
CONTRACT NO. 70F49				
ILLINOIS FED. AID PROJECT				

* LEROY, TOWANDA, BLOOM IMP 2024-2

LEGEND

-  PAVEMENT REMOVAL
- ME = MATCH EXISTING
- TS = TOP OF SLAB
- TW = TOP OF WALL



MODEL: D:\chm\...
 FILE NAME: P:\E\Illinois\...
 MODEL: D:\chm\...
 FILE NAME: P:\E\Illinois\...



USER NAME = rhanfland	DESIGNED -	REVISED -
DRAWN - SMH	REVISED -	
PLOT SCALE = 20,000' / 1"	CHECKED -	REVISED -
PLOT DATE = 12/5/2023	DATE -	REVISED -

**STATE OF ILLINOIS
DEPARTMENT OF TRANSPORTATION**

**ENLARGED PLAN
TOWANDA STORAGE FACILITY**

F.A. RTE.	SECTION	COUNTY	TOTAL SHEETS	SHEET NO.
N/A	*	MCLEAN	13	10
CONTRACT NO. 70F49			ILLINOIS FED. AID PROJECT	

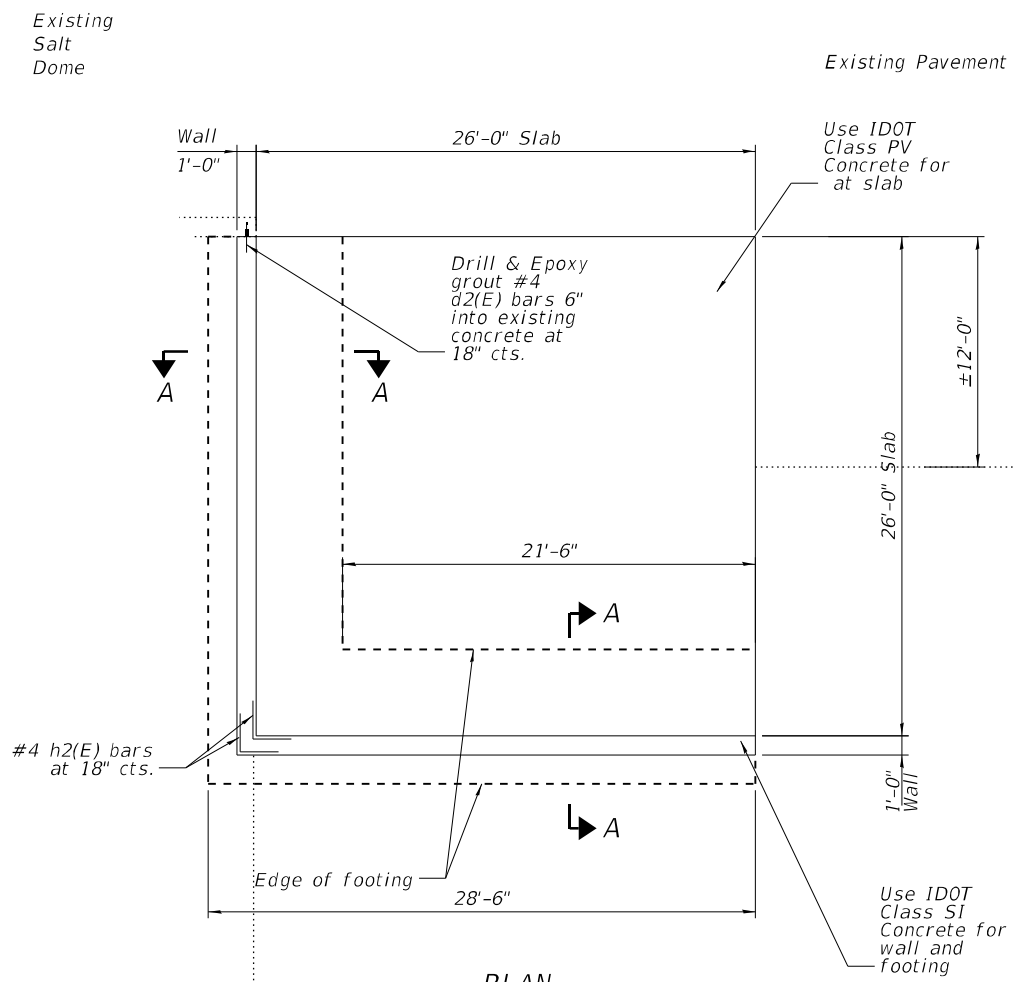
SCALE: 1"=10' SHEET 3 OF 3 SHEETS STA. N/A TO STA. N/A

* LEROY, TOWANDA, BLOOM IMP 2024-2

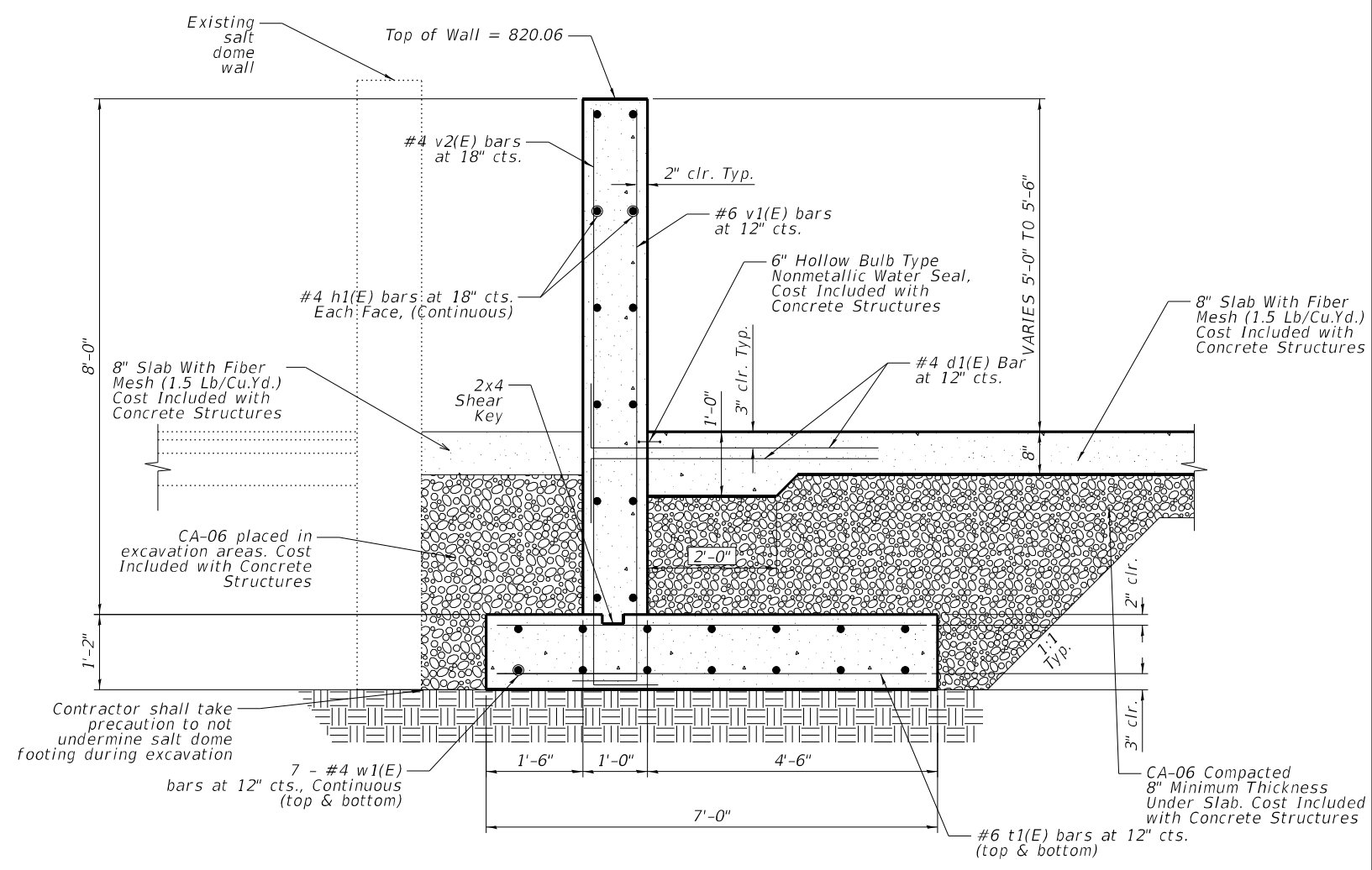
DESIGN STRESSES

FIELD UNITS

$f'c = 3,500$ psi
 $f_y = 60,000$ psi (Reinforcement)



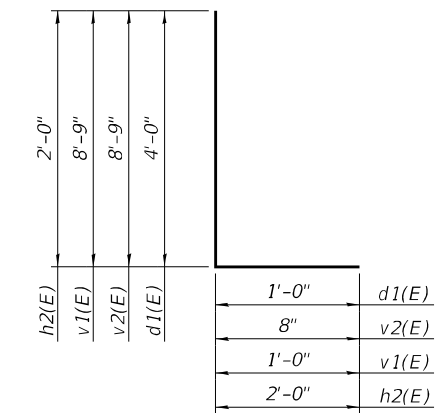
PLAN
NOT TO SCALE



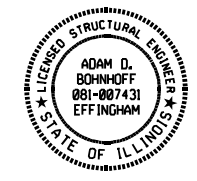
SECTION A-A
NOT TO SCALE

BILL OF MATERIAL

Bar	No.	Size	Length	Shape
d1(E)	108	#4	5'-0"	U
d2(E)	6	#4	2'-0"	U
h1(E)	24	#4	26'-8"	U
h2(E)	12	#4	4'-0"	U
t1(E)	102	#6	6'-8"	U
v1(E)	54	#6	9'-9"	U
v2(E)	37	#4	9'-5"	U
w1(E)	28	#4	26'-8"	U
Concrete Structures		Cu. Yd.	66.3	
Reinforcement Bars, Epoxy Coated		Pound	3,380	



BARS d1(E), v1(E), v2(E), & h2(E)



Adam Bohnhoff

SIGNATURE: 11/17/2023

DATE:

LICENSED STRUCTURAL ENGINEER
 STATE OF ILLINOIS NO.
 081-007431
 EXPIRES 11-30-2024

GENERAL NOTES

- REINFORCEMENT BARS DESIGNATED (E) SHALL BE EPOXY COATED.
- THE PUSH WALL SLAB SHALL RECEIVE A LIGHT-BROOM FINISH, AND THE WALLS SHALL RECEIVE A NORMAL FINISH IN ACCORDANCE WITH ARTICLE 503.15 OF THE STANDARD SPECIFICATIONS.
- THE PUSH WALL IS DESIGNED FOR A 2,000 PLF SERVICE LOAD AT 2' ABOVE THE CONCRETE SLAB.
- MAXIMUM APPLIED SERVICE BEARING PRESSURE QMAX, 1,500 PSF.

MODEL: PushWall.dwg
 FILE NAME: P:\Effingham\3454-PTB 189 IDOT DS 14\Work Order #12\CAD\Project Drawings\0570549_PushWall.dwg
 PLOT DATE = 11/17/2023



USER NAME = rhanfland	DESIGNED -	REVISED -
DRAWN - SMH	REVISOR -	
CHECKED -	REVISOR -	
DATE - 11/17/2023	DATE -	

STATE OF ILLINOIS
DEPARTMENT OF TRANSPORTATION

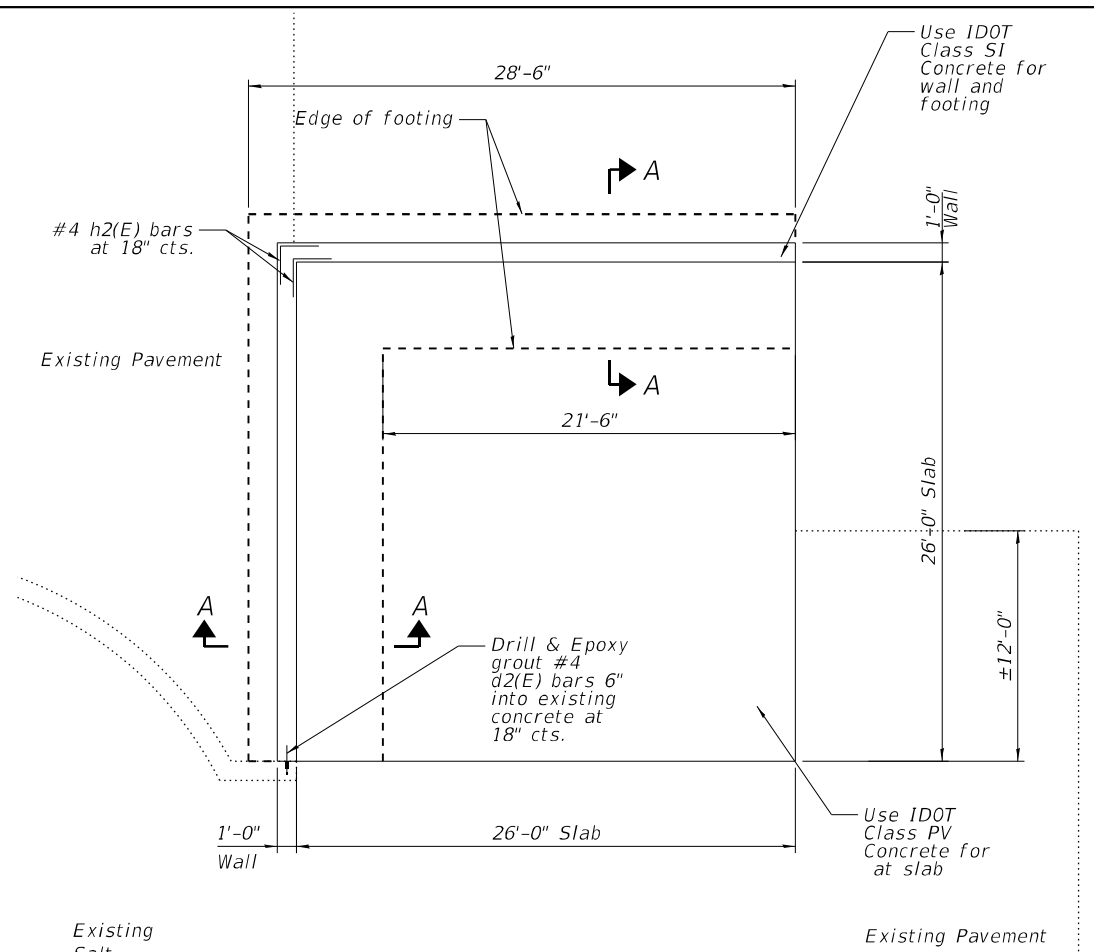
PUSH WALL DETAILS		F.A. RTE.	SECTION	COUNTY	TOTAL SHEETS	SHEET NO.
BLOOMINGTON STORAGE FACILITY				MCLEAN	13	11
SCALE: NTS	SHEET 1 OF 3 SHEETS	STA. N/A	TO STA. N/A	CONTRACT NO. 70F49		

ILLINOIS	FED. AID PROJECT
* LEROY, TOWANDA, BLOOM IMP 2024-2	

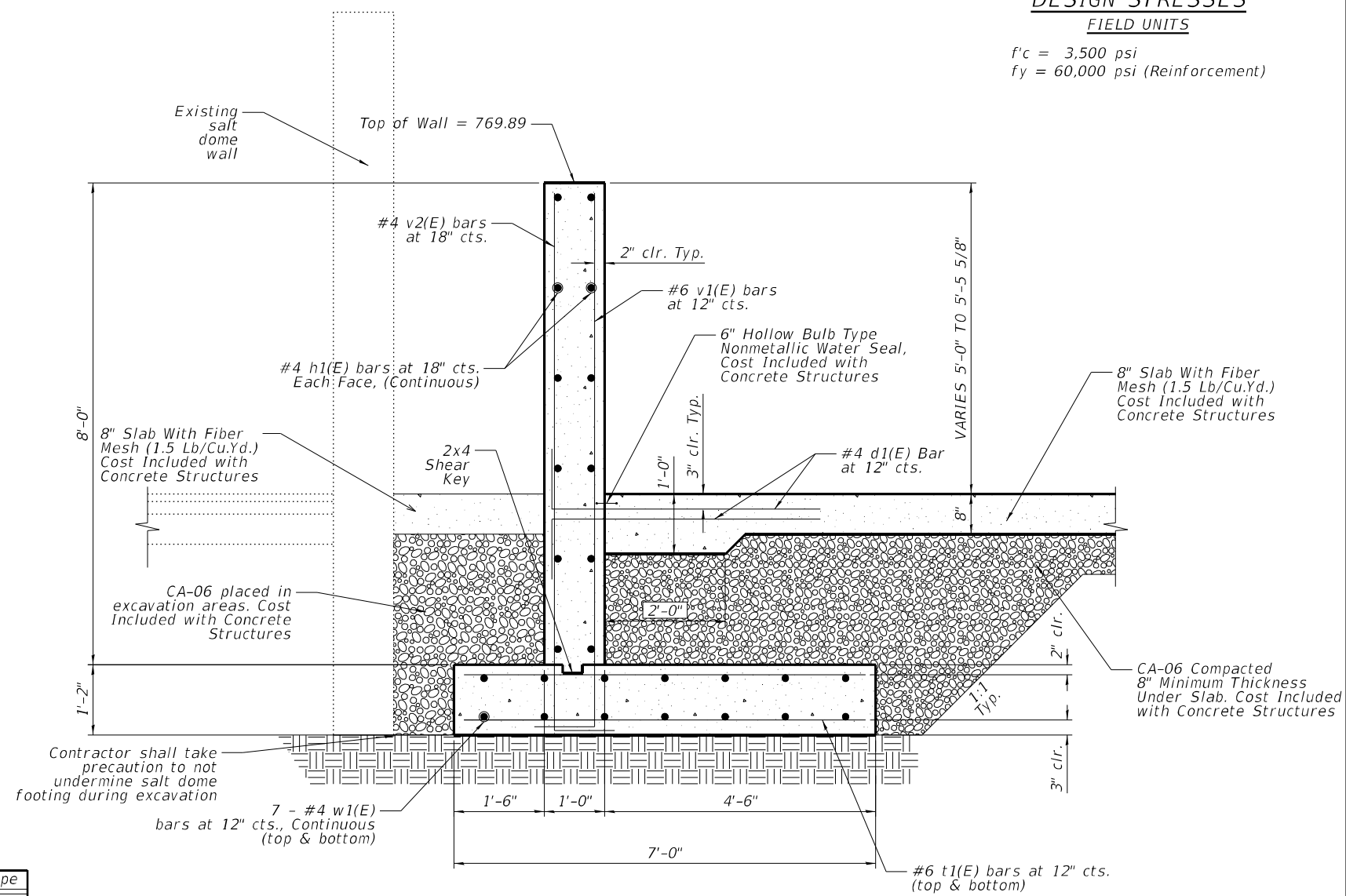
DESIGN STRESSES

FIELD UNITS

$f'c = 3,500$ psi
 $f_y = 60,000$ psi (Reinforcement)



PLAN
NOT TO SCALE



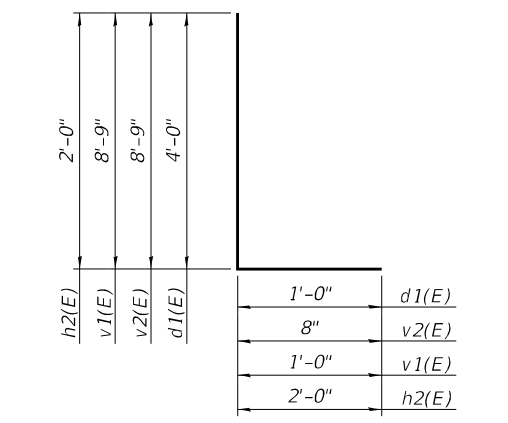
SECTION A-A
NOT TO SCALE

BILL OF MATERIAL

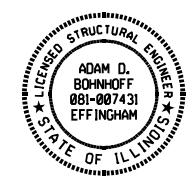
Bar	No.	Size	Length	Shape
d1(E)	108	#4	5'-0"	┌
d2(E)	6	#4	2'-0"	┌
h1(E)	24	#4	26'-8"	┌
h2(E)	12	#4	4'-0"	┌
t1(E)	102	#6	6'-8"	┌
v1(E)	54	#6	9'-9"	┌
v2(E)	37	#4	9'-5"	┌
w1(E)	28	#4	26'-8"	┌
Concrete Structures		Cu. Yd.	55.6	
Reinforcement Bars, Epoxy Coated		Pound	3,380	

GENERAL NOTES

- REINFORCEMENT BARS DESIGNATED (E) SHALL BE EPOXY COATED.
- THE PUSH WALL SLAB SHALL RECEIVE A LIGHT-BROOM FINISH, AND THE WALLS SHALL RECEIVE A NORMAL FINISH IN ACCORDANCE WITH ARTICLE 503.15 OF THE STANDARD SPECIFICATIONS.
- THE PUSH WALL IS DESIGNED FOR A 2,000 PLF SERVICE LOAD AT 2' ABOVE THE CONCRETE SLAB.
- MAXIMUM APPLIED SERVICE BEARING PRESSURE QMAX, 1,500 PSF.



BARS d1(E), v1(E), v2(E), & h2(E)



SIGNATURE: *Adam Bohnhoff*
 DATE: 11/17/2023
 LICENSED STRUCTURAL ENGINEER
 STATE OF ILLINOIS NO.
 081-007431
 EXPIRES 11-30-2024

MODEL: PushW.Dwg
 FILE NAME: P:\E\Illinois\3464-PTB 189 IDOT 05 14\Work Order #12\CAD\Project Drawings\05070519_PushWall.dwg
 PLOT DATE = 11/17/2023



USER NAME = rhanland	DESIGNED -	REVISED -
PLOT SCALE = 100,000' / 1"	DRAWN - SMH	REVISED -
PLOT DATE = 11/17/2023	CHECKED -	REVISED -
	DATE -	REVISED -

STATE OF ILLINOIS
DEPARTMENT OF TRANSPORTATION

PUSH WALL DETAILS
LERoy STORAGE FACILITY

SCALE: NTS SHEET 2 OF 3 SHEETS STA. N/A TO STA. N/A

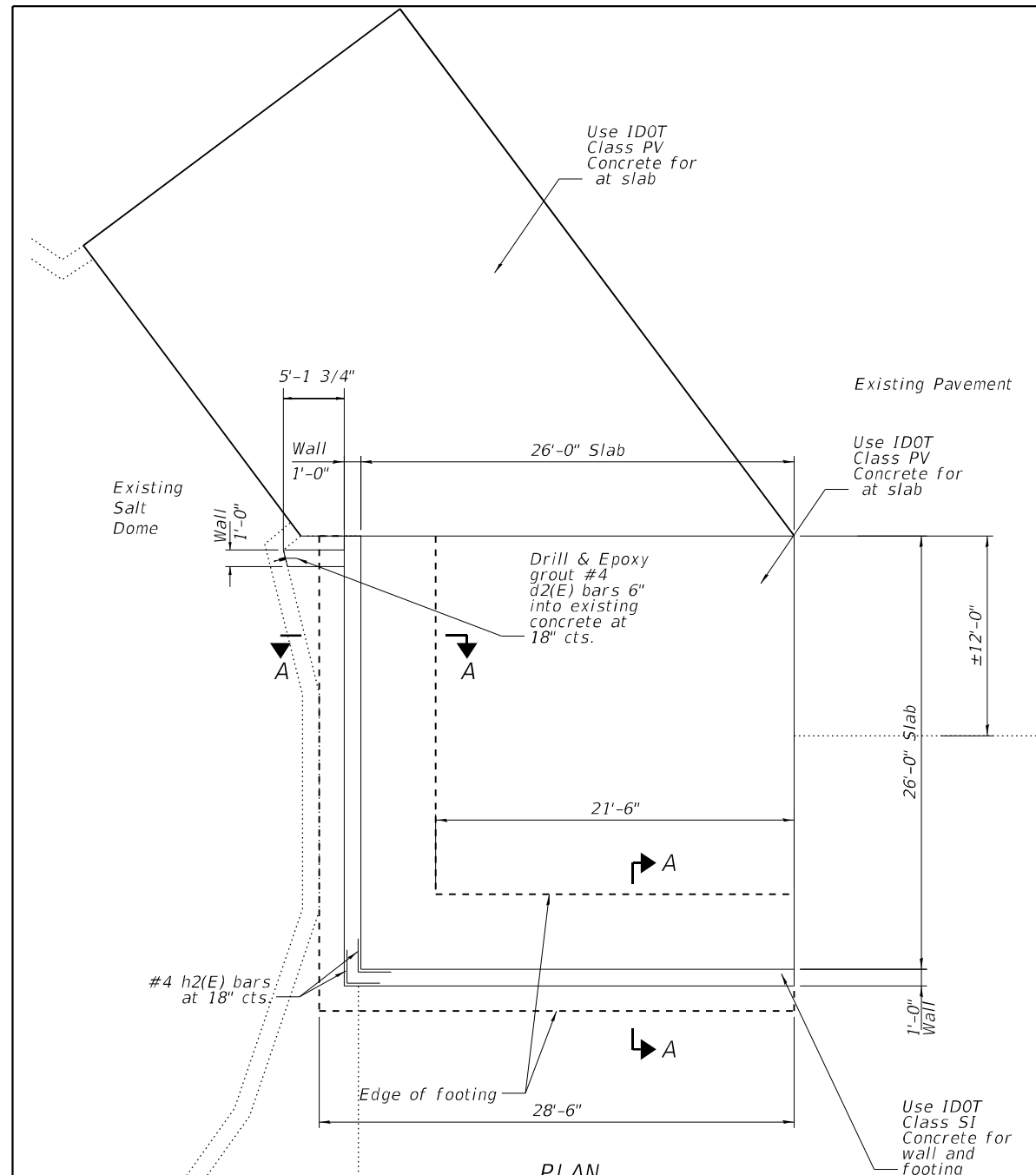
F.A. RTE.	SECTION	COUNTY	TOTAL SHEETS	SHEET NO.
N/A	*	MCLEAN	13	12
CONTRACT NO. 70F49				
ILLINOIS FED. AID PROJECT				

* LEROY, TOWANDA, BLOOM IMP 2024-2

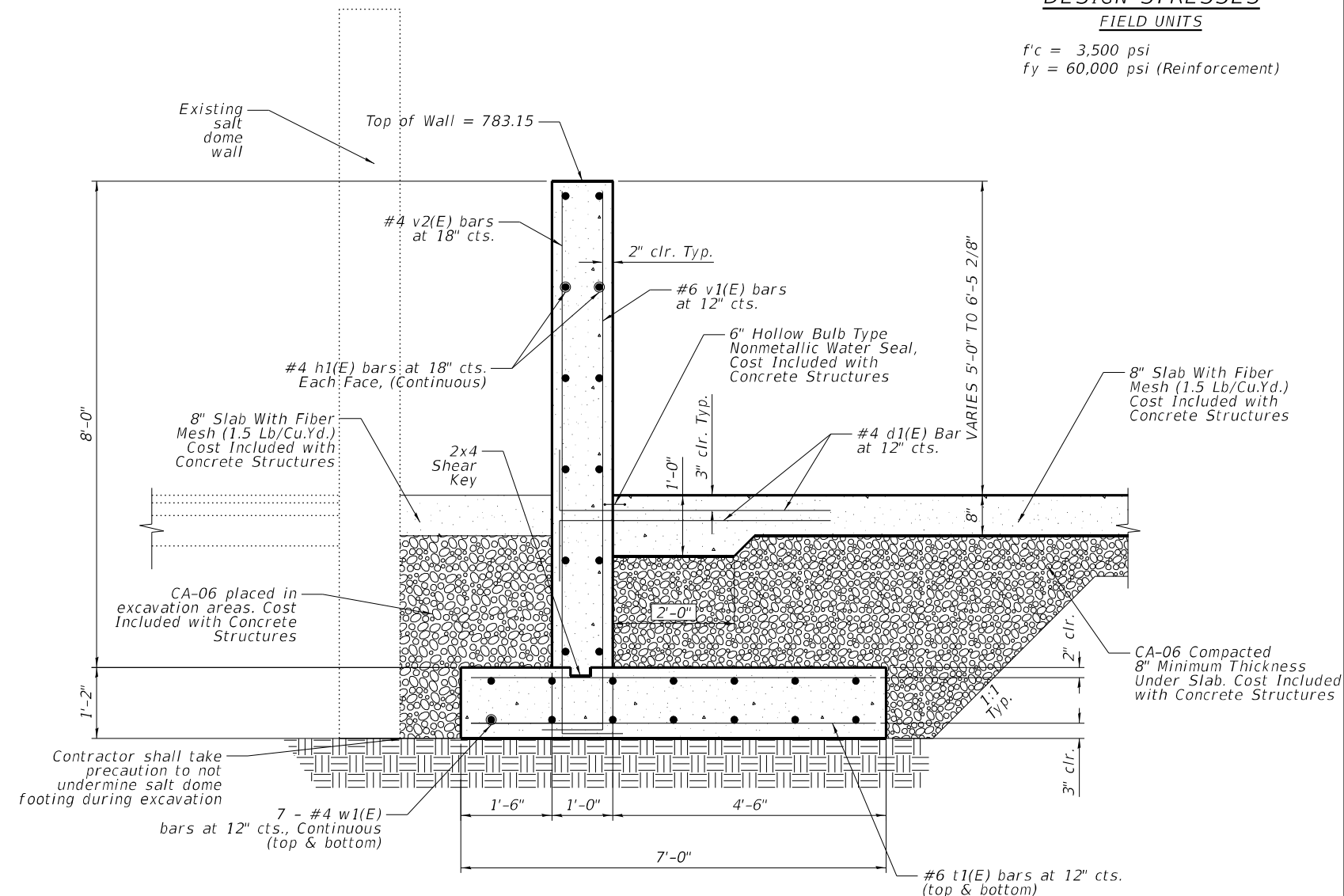
DESIGN STRESSES

FIELD UNITS

$f'_c = 3,500$ psi
 $f_y = 60,000$ psi (Reinforcement)



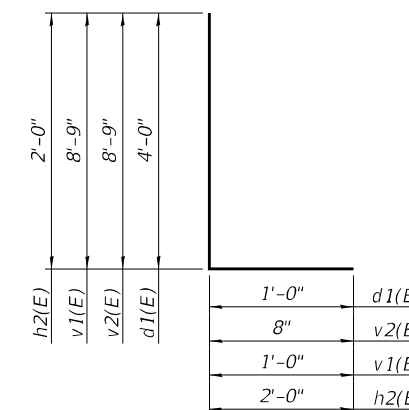
PLAN
NOT TO SCALE



SECTION A-A
NOT TO SCALE

BILL OF MATERIAL

Bar	No.	Size	Length	Shape
d1(E)	108	#4	5'-0"	—
d2(E)	6	#4	2'-0"	—
h1(E)	24	#4	26'-8"	—
h2(E)	12	#4	4'-0"	—
t1(E)	102	#6	6'-8"	—
v1(E)	62	#6	9'-9"	—
v2(E)	37	#4	9'-5"	—
w1(E)	28	#4	26'-8"	—
Concrete Structures		Cu. Yd.	74.3	
Reinforcement Bars, Epoxy Coated		Pound	3,490	



BARS d1(E), v1(E), v2(E), & h2(E)

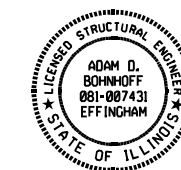
GENERAL NOTES

REINFORCEMENT BARS DESIGNATED (E) SHALL BE EPOXY COATED.

THE PUSH WALL SLAB SHALL RECEIVE A LIGHT-BROOM FINISH, AND THE WALLS SHALL RECEIVE A NORMAL FINISH IN ACCORDANCE WITH ARTICLE 503.15 OF THE STANDARD SPECIFICATIONS.

THE PUSH WALL IS DESIGNED FOR A 2,000 PLF SERVICE LOAD AT 2' ABOVE THE CONCRETE SLAB.

MAXIMUM APPLIED SERVICE BEARING PRESSURE QMAX, 1,500 PSF.



SIGNATURE: *Adam Bohnhoff*

DATE: 11/17/2023

LICENSED STRUCTURAL ENGINEER
 STATE OF ILLINOIS NO.
 NO. 081-007431
 EXPIRES 11-30-2024

MODEL: PushW.Dwg
 FILE NAME: P:\E\Illinois\3464-PFB-189 IDOT DS 14\Work Order #12\CAD\Project Drawings\0570549_PushWall.dwg
 PLOT DATE = 11/17/2023



USER NAME = rhanland	DESIGNED -	REVISED -
PLOT SCALE = 100,000' / 1"	DRAWN - SMH	REVISED -
PLOT DATE = 11/17/2023	CHECKED -	REVISED -
	DATE -	REVISED -

STATE OF ILLINOIS
DEPARTMENT OF TRANSPORTATION

PUSH WALL DETAILS
TOWANDA STORAGE FACILITY
 SCALE: NTS SHEET 3 OF 3 SHEETS STA. N/A TO STA. N/A

F.A. RTE.	SECTION	COUNTY	TOTAL SHEETS	SHEET NO.
		MCLEAN	13	13
CONTRACT NO. 70F49				
ILLINOIS FED. AID PROJECT				

* LEROY, TOWANDA, BLOOM IMP 2024-2