

STATE OF ILLINOIS  
DEPARTMENT OF TRANSPORTATION

F.A. #	SECTION	COUNTY	TOTAL SHEETS	SHEET NO.
841	(108,34,35)RS-4,126RS-5	ILLINOIS	48	1
CONTRACT NO. 78A47			PERRY/FRANKLIN	

# PROPOSED HIGHWAY PLANS

FAP ROUTE 841 (IL 154)  
SECTION (108,34,35)RS-4,126RS-5  
PROJECT STP-7LXP(469)  
HMA RESURFACING  
PERRY/FRANKLIN COUNTY

C-99-055-24

FOR INDEX OF SHEETS, SEE SHEET NO. 3

**TRAFFIC DATA - 2023 ADT**

- FAP ROUTE 841 (IL 154) - 4,000 WITH 10% TRUCKS W OF US 51
- FAP ROUTE 841 (IL 154) - 2,700 WITH 14.36% TRUCKS E OF US 51
- FAP ROUTE 322 (US 51) - 4,600 WITH 7.93% TRUCKS S OF IL 154
- FAP ROUTE 322 (US 51) - 3000 WITH 8% TRUCKS N OF IL 154

**POSTED SPEED LIMITS**

- FAP ROUTE 841 (IL 154) - 55 MPH
- FAP ROUTE 322 (US 51) - 55 MPH
- FAP ROUTE 726 (IL 148) 40 MPH

**STATION EQUATIONS**

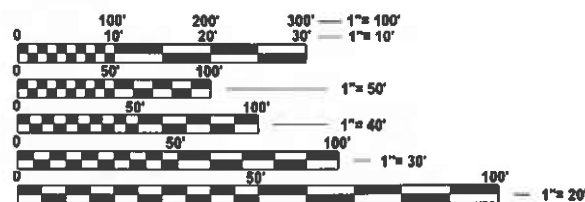
- 410+13.60 (BK) = 0+09.29 (AH)
- 29+35.9 (BK) = 29+36.77 (AH)
- 42+42.91 (BK) = 42+45.42 (AH)
- 102+00.91 (BK) = 102+03.49 (AH)
- 155+25.18 (BK) = 155+27.59 (AH)
- 304+67.34 (BK) = 304+68.37 (AH)
- 348+07.18 (BK) = 348+07.65 (AH)
- 398+23.58 (BK) = 398+23.68 (AH)
- 470+07.23 (BK) = 470+10.90 (AH)

**STATION OMISSIONS**

- 7+61.10 TO 7+65.1 (RAILROAD)
- 63+96 TO 65+39 (SN 073-0027)
- 231+33.25 TO 233+02.75 (SN 073-0035)
- 343+20 TO 345+00 (SN 028-0068)
- 353+25.5 TO 354+58.5 (SN 028-0072)
- 431+57.5 TO 432+94.5 (SN 028-0071)

**TOWNSHIPS**

PERRY CO UNIT ROAD DISTRICT  
GOODE



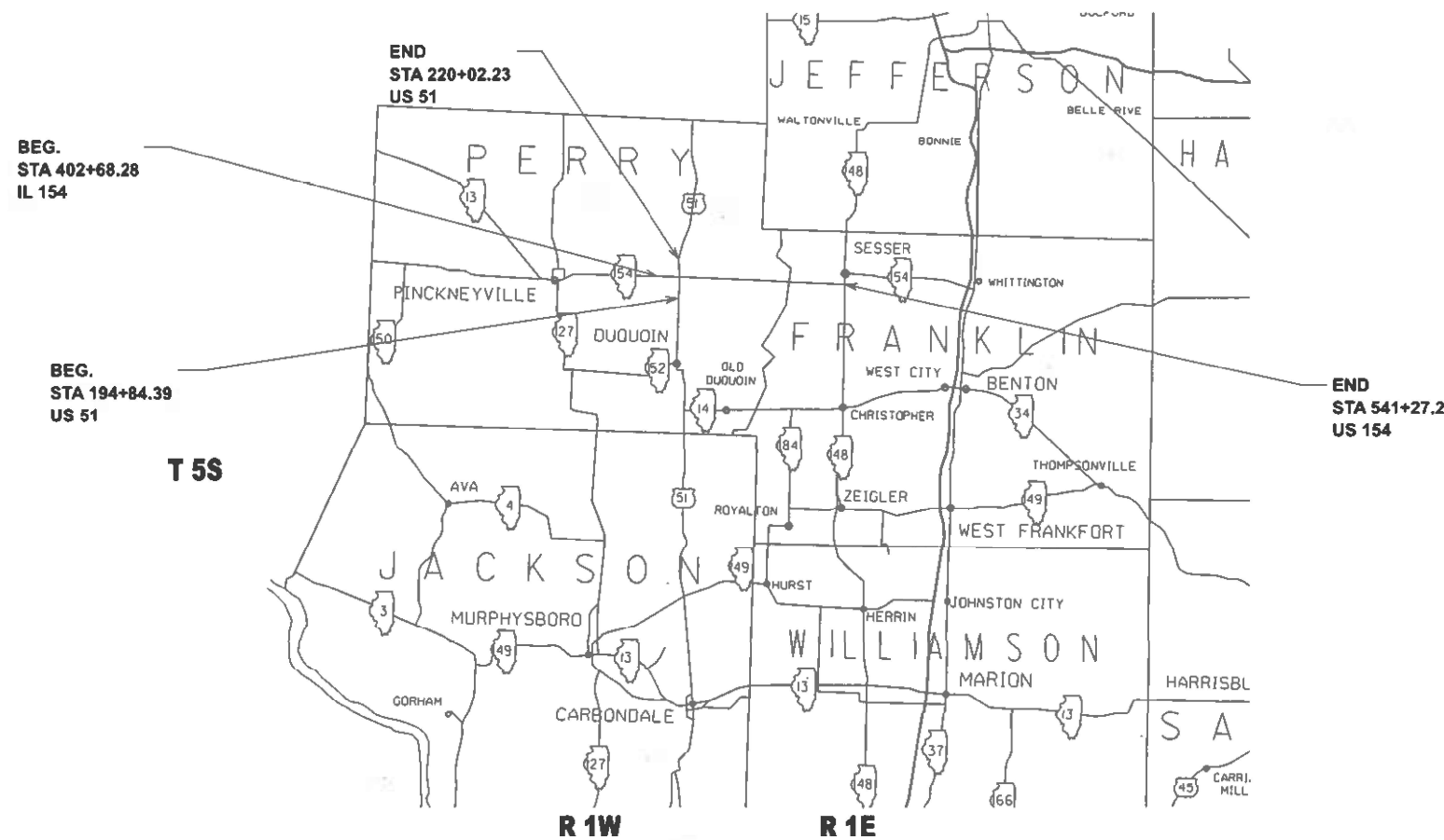
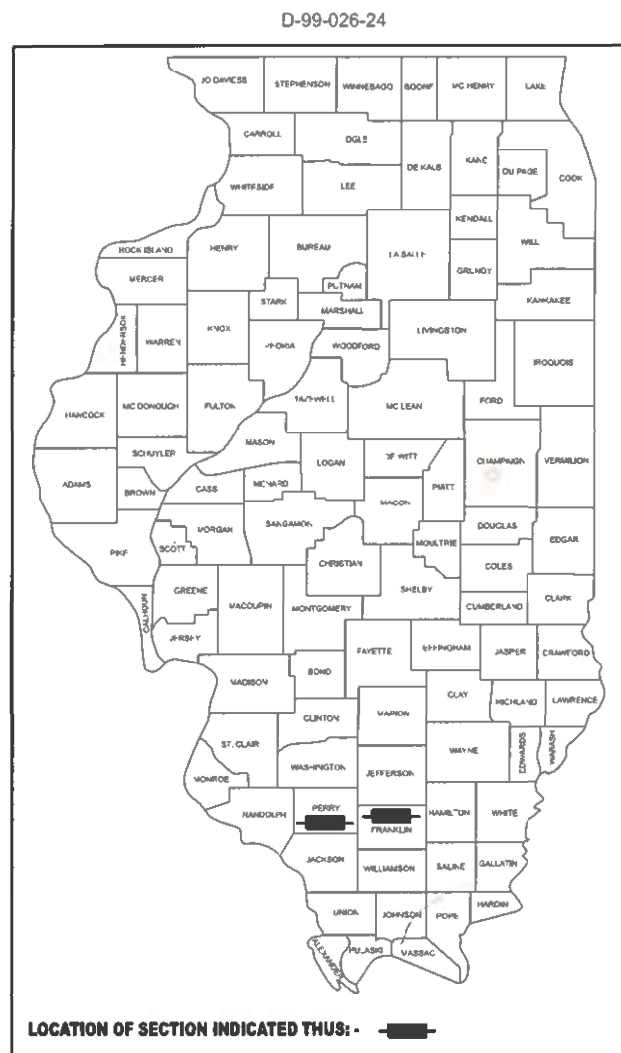
FULL SIZE PLANS HAVE BEEN PREPARED USING STANDARD ENGINEERING SCALES. REDUCED SIZED PLANS WILL NOT CONFORM TO STANDARD SCALES. IN MAKING MEASUREMENTS ON REDUCED PLANS, THE ABOVE SCALES MAY BE USED.

J.U.L.I.E.  
JOINT UTILITY LOCATION INFORMATION FOR EXCAVATION  
1-800-892-0123  
OR 811

PROJECT ENGINEER SUSAN POE  
PROJECT MANAGER NATHAN TAYLOR

CONTRACT NO. 78A47

GROSS LENGTH = 57,381 FT. = 10.867 MILE  
NET LENGTH = 56,605 FT. = 10.721 MILE



STATE OF ILLINOIS  
DEPARTMENT OF TRANSPORTATION

SUBMITTED Dec 13 20 23  
Kirk H. Brown  
REGIONAL ENGINEER

February 2, 2024  
[Signature]  
ENGINEER OF DESIGN AND ENVIRONMENT

February 2, 2024  
[Signature]  
DIRECTOR OF HIGHWAYS PROJECT IMPLEMENTATION

PRINTED BY THE AUTHORITY  
OF THE STATE OF ILLINOIS

MODEL: Signature (Sheet)  
 FILE NAME: C:\pwworking\midot\lay\work\06925227\0978A47-ShA-Cover\_Sig.dgn

Prepared By: Charles Stein  
 DISTRICT STUDIES & PLANS ENGINEER

Examined By: Nancy Lee  
 DISTRICT LAND ACQUISITION ENGINEER

Examined By: C. Nelson  
 DISTRICT PROGRAM DEVELOPMENT ENGINEER

Examined By: [Signature]  
 DISTRICT OPERATIONS ENGINEER

Examined By: Daryl J. [Signature]  
 DISTRICT PROJECT IMPLEMENTATION ENGINEER

Examined By: Daryl J. [Signature]  
 DISTRICT CONSTRUCTION ENGINEER

Examined By: Aunt [Signature]  
 DISTRICT MATERIALS ENGINEER

USER NAME = Nathan.Taylor	DESIGNED -	REVISED -
DRAWN -	REVISED -	
PLOT SCALE = 0.19666633 / in.	CHECKED -	REVISED -
PLOT DATE = 12/7/2023	DATE -	REVISED -

**STATE OF ILLINOIS  
 DEPARTMENT OF TRANSPORTATION**

**SIGNATURE SHEET**

SCALE: SHEET OF 48 SHEETS STA. TO STA.

F.A.P. RTE.	SECTION	COUNTY	TOTAL SHEETS	SHEET NO.
841	(108.34.35)RS-4,126RS-5		48	2
CONTRACT NO. 78A47				
ILLINOIS FED. AID PROJECT				



# MIX DESIGNS

# MTD RESTRICTION TABLE

Locations	Hot-Mix Asphalt Surface Course, Incidental Hot Mix Asphalt
Mixture Use(s):	Hot-Mix Asphalt Surface Course, Mix D, N70
PG:	PG64-22
Design Air Voids:	4.0%, 70 Gyration Design
Mixture Composition: (Gradation Mixture)	IL-9.5 mm
Friction Aggregate:	Mix D
Mixture Weight:	112 lbs/sq yd/in
Quality Management Program:	PFP
Sublot Size:	1,000 tons
Material Transfer Device	Yes – Surface Course No – Incidental HMA

Locations	Hot-Mix Asphalt Binder Course
Mixture Use(s):	Hot-Mix Asphalt Binder Course, N70, IL-19.0
PG64-22	PG64-22
Design Air Voids:	4.0%, 70 Gyration Design
Mixture Composition: (Gradation Mixture)	IL-19.0 mm
Friction Aggregate:	None
Mixture Weight:	112 lbs/sq yd/in
Quality Management Program:	PFP
Sublot Size:	1,000 tons
Material Transfer Device	Yes

Locations	Hot-Mix Asphalt Shoulders
Mixture Use(s):	Hot-Mix Asphalt Surface Course, Mix C, N30
PG:	PG64-22
Design Air Voids:	4.0%, 30 Gyration Design
Mixture Composition: (Gradation Mixture)	IL-9.5L
Friction Aggregate:	None
Mixture Weight:	112 lbs/sq yd/in
Quality Management Program:	QC/QA
Sublot Size:	3,000 tons
Material Transfer Device	No

MODEL: Mix Designs and MTD Restrictions [Sheet]  
 FILE NAME: c:\p\work\perryfranklin\mtd\0226227\09xxxxx-SHB-Index\_GenNotes.dgn

USER NAME = Nathan.Taylor	DESIGNED -	REVISED -
PLOT SCALE = 0.16666633' / in.	DRAWN -	REVISED -
PLOT DATE = 12/14/2023	CHECKED -	REVISED -
	DATE -	REVISED -

**STATE OF ILLINOIS  
DEPARTMENT OF TRANSPORTATION**

**MIX DESIGNS AND  
MTD RESTRICTIONS**

SCALE: SHEET OF 48 SHEETS STA. TO STA.

F.A.P RTE.	SECTION	COUNTY	TOTAL SHEETS	SHEET NO.
841	(108,34.35)RS-4,126RS-5	*	48	4
CONTRACT NO. 78A47				

ILLINOIS FED. AID PROJECT

\*PERRY/FRANKLIN



# SUMMARY OF QUANTITIES - CONT

CODE NUMBER	ITEM DESCRIPTION	UNIT	TOTAL QUANTITY	COUNTY:	PERRY CO	FRANKLIN CO
				ROUTE:	FAP 841	FAP 841
				FUNDING:	80% FEDERAL 20% STATE	80% FEDERAL 20% STATE
				LOCATION:	RURAL	RURAL
				ROADWAY	ROADWAY	
				0005	0005	
44201394	CLASS C PATCHES, TYPE III, 13 INCH	SQ YD	16		0	16
44201396	CLASS C PATCHES, TYPE IV, 13 INCH	SQ YD	27		0	27
48102100	AGGREGATE WEDGE SHOULDER, TYPE B	TON	2,781		1,862	919
48203100	HOT-MIX ASPHALT SHOULDERS	TON	10,465		6,912	3,553
60604400	COMBINATION CONCRETE CURB AND GUTTER, TYPE B-6.18	FOOT	28		28	0
64200108	SHOULDER RUMBLE STRIPS, 8 INCH	FOOT	108,970		71,935	37,035
67000400	ENGINEER'S FIELD OFFICE, TYPE A	CAL MO	7		4	3
67100100	MOBILIZATION	L SUM	1.0		0.6	0.4
70100460	TRAFFIC CONTROL AND PROTECTION, STANDARD 701306	L SUM	1.0		0.6	0.4
70100600	TRAFFIC CONTROL AND PROTECTION, STANDARD 701336	L SUM	1.0		0.6	0.4
70102635	TRAFFIC CONTROL AND PROTECTION, STANDARD 701701	L SUM	1.0		0.6	0.4
70107025	CHANGEABLE MESSAGE SIGN	CAL DA	56.0		33.0	23.0
70300100	SHORT TERM PAVEMENT MARKING	FOOT	25,563.0		17,200.0	8,363.0

MODEL: SOQ-2 (Sheet)  
 FILE NAME: c:\p\work\perryfranklin\perryfranklin\092522\TD9xxxx-SumC-SOQ.dgn

USER NAME = Nathan.Taylor	DESIGNED -	REVISED -
PLOT SCALE = 0.16666833' / in.	DRAWN -	REVISED -
PLOT DATE = 12/14/2023	CHECKED -	REVISED -
	DATE -	REVISED -

**STATE OF ILLINOIS  
DEPARTMENT OF TRANSPORTATION**

**SUMMARY OF QUANTITIES**

SCALE: SHEET OF 48 SHEETS STA. TO STA.

F.A.P. RTE.	SECTION	COUNTY	TOTAL SHEETS	SHEET NO.
841	(108,34.35)RS-4,126RS-5	*	48	6
CONTRACT NO. 78A47				

ILLINOIS FED. AID PROJECT

\*PERRY/FRANKLIN



# SUMMARY OF QUANTITIES - CONT

<b>COUNTY:</b>	<b>PERRY CO</b>	<b>FRANKLIN CO</b>
<b>ROUTE:</b>	<b>FAP 841</b>	<b>FAP 841</b>
<b>FUNDING:</b>	<b>80% FEDERAL 20% STATE</b>	<b>80% FEDERAL 20% STATE</b>
<b>LOCATION:</b>	<b>RURAL</b>	<b>RURAL</b>
	<b>ROADWAY</b>	<b>ROADWAY</b>
	<b>0005</b>	<b>0005</b>

CODE NUMBER	ITEM DESCRIPTION	UNIT	TOTAL QUANTITY		
	Z0034105 MATERIAL TRANSFER DEVICE	TON	33,988.0	22,663.0	11,325.0
∅	Z0076600 TRAINEES	HOUR	500	500	
	Z0048665 RAILROAD PROTECTIVE LIABILITY INSURANCE	L SUM	1.0	1.0	
∅	Z0076604 TRAINEES TRAINING PROGRAM GRADUATE	HOUR	500	500	

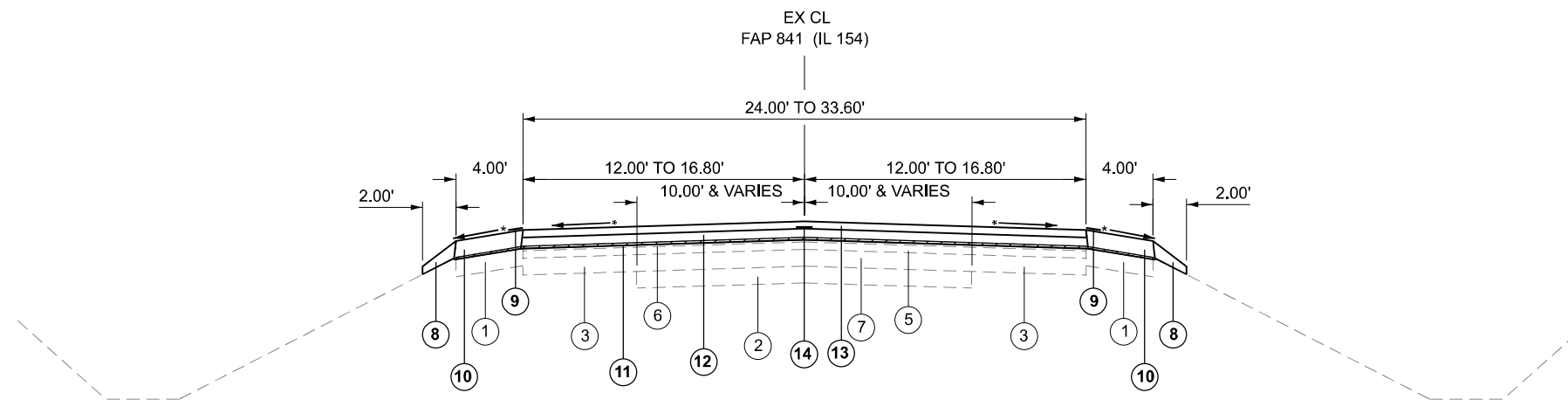
∅ 0042

REV. - MS

MODEL: SOQ-4 [Sheet]  
FILE NAME: c:\p\work\perryfranklin\perryfranklin\092522\092522\SOQ-4.dgn

USER NAME = Nathan.Taylor	DESIGNED -	REVISED -	<b>STATE OF ILLINOIS DEPARTMENT OF TRANSPORTATION</b>	<b>SUMMARY OF QUANTITIES</b>			F.A.P RTE.	SECTION	COUNTY	TOTAL SHEETS	SHEET NO.
PLOT SCALE = 0.16666833' / in.	CHECKED -	REVISED -		841	(108,34.35)RS-4,126RS-5	*			48	8	
PLOT DATE = 12/14/2023	DATE -	REVISED -		SCALE: SHEET OF 48 SHEETS STA. TO STA.			CONTRACT NO. 78A47				
							ILLINOIS FED. AID PROJECT *PERRY/FRANKLIN				

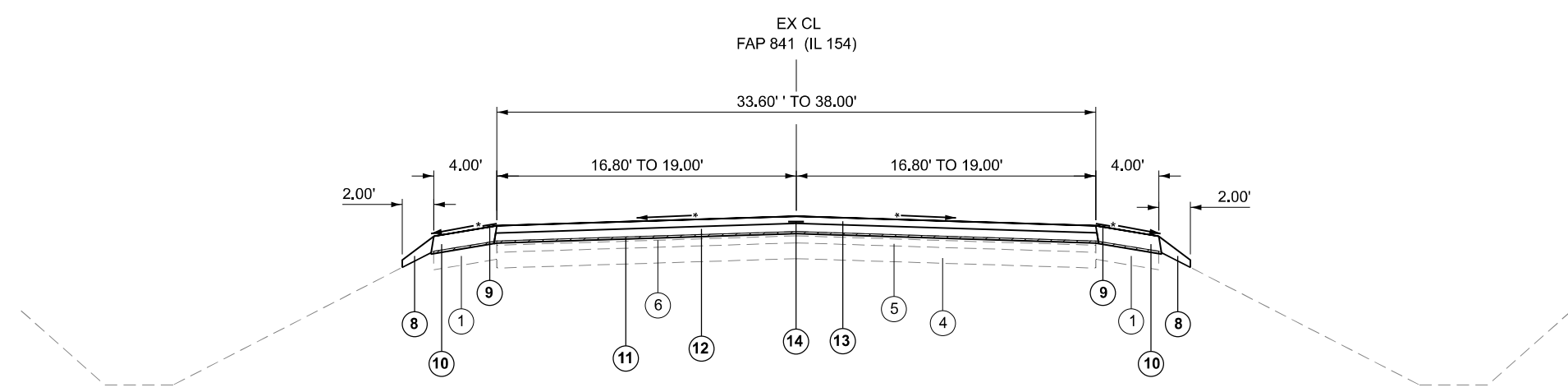




**TO BE USED**  
**STA 402+68.28 TO STA 405+45.5 (W OF US 51)**

- | <u>EXISTING</u>  | <u>PROPOSED</u>                 |
|--|---------------------------------|
| ① EX HMA SHOULDER 8"   | ⑧ PR AGG WEDGE SHOULDER, TY, B  |
| ② EX AGG BASE COURSE 6" TO 9"  | ⑨ PR SHOULDER RUMBLE STRIP 8"   |
| ③ EX HMA BASE COURSE WIDENING 9"                                     | ⑩ PR HMA SHOULDER 3 3/4"        |
| ④ EX PCC PAVEMENT 8 1/2"   | ⑪ PR HMA SURFACE REMOVAL 1/2"   |
| ⑤ EX HMA BINDER 2"   | ⑫ PR HMA BINDER COURSE 2-1/4"   |
| ⑥ EX HMA SURFACE 1 1/2"  | ⑬ PR HMA SURFACE COURSE 1 1/2"  |
| ⑦ EX HMA OVERLAY 2 1/2" W MULTIPLE A-1 SURF TREATMENTS 2 1/2"-4 1/2" | ⑭ PR LONGITUDINAL JOINT SEALANT |

**NOTES:**  
 \*MATCH EX PAVEMENT CROSS SLOPE  
 TYPICALS NOT TO SCALE  
 LONGITUDINAL JOINT SEALANT  
 TO BE PLACED BETWEEN  
 BINDER AND SURFACE COURSE



**TO BE USED**  
**STA 405+45.5 TO STA 406+56.84 (W OF US 51)**

MODEL: TYPICAL SECTION IL 154-1 (Sheet)  
 FILE NAME: c:\p\work\pav\road\pav\mcd\025227D9xxxx-ShtD-TypicalB.dgn

USER NAME = Nathan.Taylor	DESIGNED -	REVISED -
	DRAWN -	REVISED -
PLOT SCALE = 0.16666833' / in.	CHECKED -	REVISED -
PLOT DATE = 12/14/2023	DATE -	REVISED -

**STATE OF ILLINOIS**  
**DEPARTMENT OF TRANSPORTATION**

**TYPICAL SECTIONS**  
**IL 154**

SCALE: SHEET OF 48 SHEETS STA. TO STA.

F.A.P. RTE.	SECTION	COUNTY	TOTAL SHEETS	SHEET NO.
841	(108,34.35)RS-4,126RS-5	*	48	9
CONTRACT NO. 78A47				





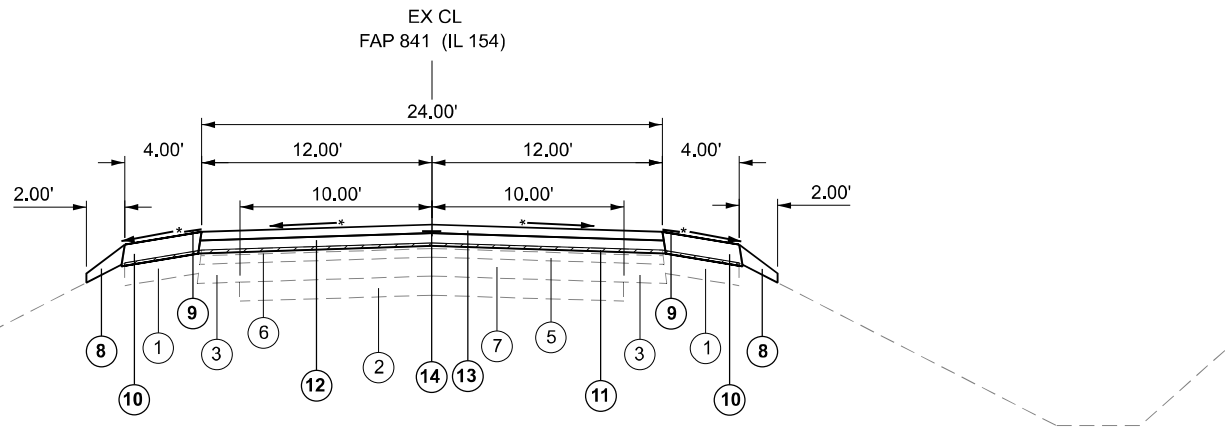


**STATION EQUATIONS**

29+35.90 (BK) = 29+36.77 (AH)  
 42+42.91 (BK) = 42+45.42 (AH)  
 102+00.91 (BK) = 102+03.49 (AH)  
 155+25.18 (BK) = 155+27.59 (AH)  
 304+67.34 (BK) = 304+68.37 (AH)  
 348+07.18 (BK) = 348+07.65 (AH)  
 398+23.58 (BK) = 398+23.68 (AH)  
 470+07.23 (BK) = 470+10.90 (AH)

**STATION OMISSIONS**

63+96 TO 65+39 (SN 073-0027)  
 231+33.25 TO 233+02.75 (SN 073-0035)  
 343+20 TO 345+00 (SN 028-0068)  
 353+25.5 TO 354+58.5 (SN 028-0072)  
 431+57.5 TO 432+94.5 (SN 028-0071)



**TO BE USED**  
 STA 7+65.10 TO STA 351+50.00  
 STA 373+40.00 TO STA 497+07.76  
 STA 510+42.76 TO STA 534+00

**EXISTING**

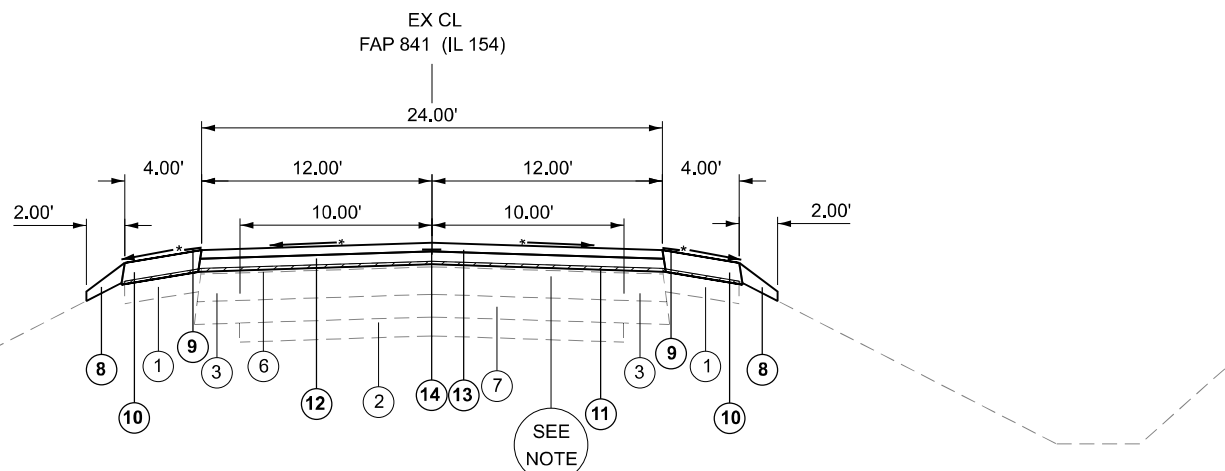
- ① EX HMA SHOULDER 8"
- ② EX AGG BASE COURSE 6" TO 9"
- ③ EX HMA BASE COURSE WIDENING 9"
- ④ EX PCC PAVEMENT 8 1/2"
- ⑤ EX HMA BINDER 2"
- ⑥ EX HMA SURFACE 1 1/2"
- ⑦ EX HMA OVERLAY 2 1/2" W MULTIPLE A-1 SURF TREATMENTS 2 1/2"-4 1/2"

**PROPOSED**

- ⑧ PR AGG WEDGE SHOULDER, TY, B
- ⑨ PR SHOULDER RUMBLE STRIP 8"
- ⑩ PR HMA SHOULDER 3 3/4"
- ⑪ PR HMA SURFACE REMOVAL 1/2"
- ⑫ PR HMA BINDER COURSE 2-1/4"
- ⑬ PR HMA SURFACE COURSE 1 1/2"
- ⑭ PR LONGITUDINAL JOINT SEALANT

**NOTES:**

\*MATCH EX PAVEMENT CROSS SLOPE  
 TYPICALS NOT TO SCALE  
 LONGITUDINAL JOINT SEALANT  
 TO BE PLACED BETWEEN  
 BINDER AND SURFACE COURSE



**TO BE USED**  
 STA 351+50.00 TO STA 373+40.00

**NOTES:**

STA 351+50 TO STA 373+40  
 EXISTING BINDER COURSE THICKNESS WILL  
 VARY AT EXISTING ROADWAY GRADE RAISE  
 AND PROFILE ADJUSTMENT FOR SN 028-0072.  
 NOMINAL THICKNESS APPROX 7".

MODEL: TYPICAL SECTION IL 154-5 (Sheet)  
 FILE NAME: c:\p\work\project\il154\typical.dgn

USER NAME = Nathan.Taylor	DESIGNED -	REVISED -
	DRAWN -	REVISED -
PLOT SCALE = 0.16666633' / in.	CHECKED -	REVISED -
PLOT DATE = 12/14/2023	DATE -	REVISED -

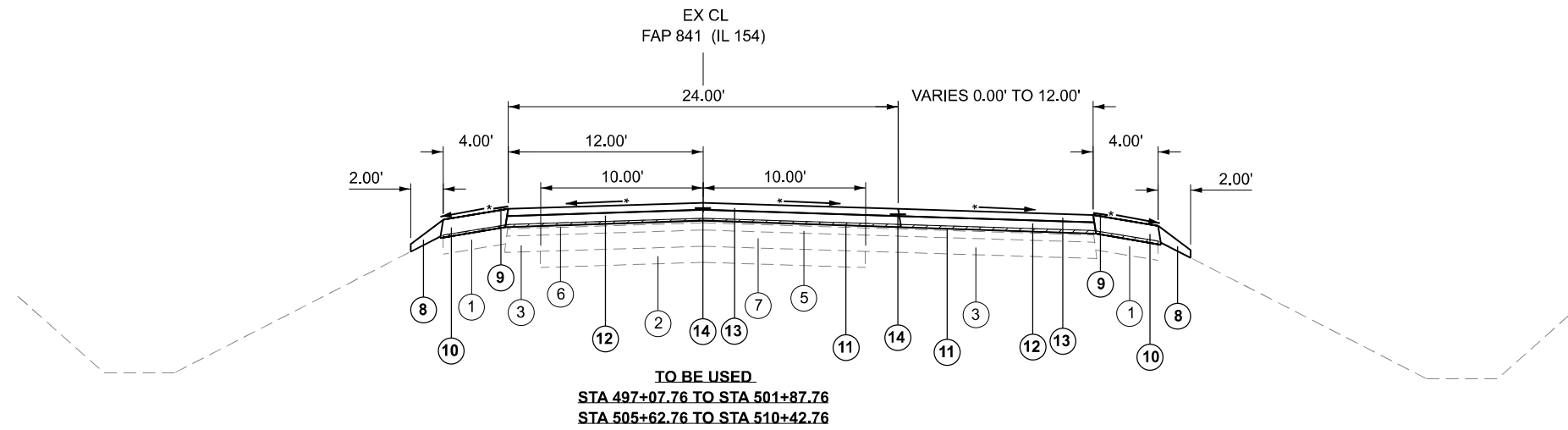
**STATE OF ILLINOIS  
 DEPARTMENT OF TRANSPORTATION**

**TYPICAL SECTIONS  
 IL 154**

SCALE: SHEET OF 48 SHEETS STA. TO STA.

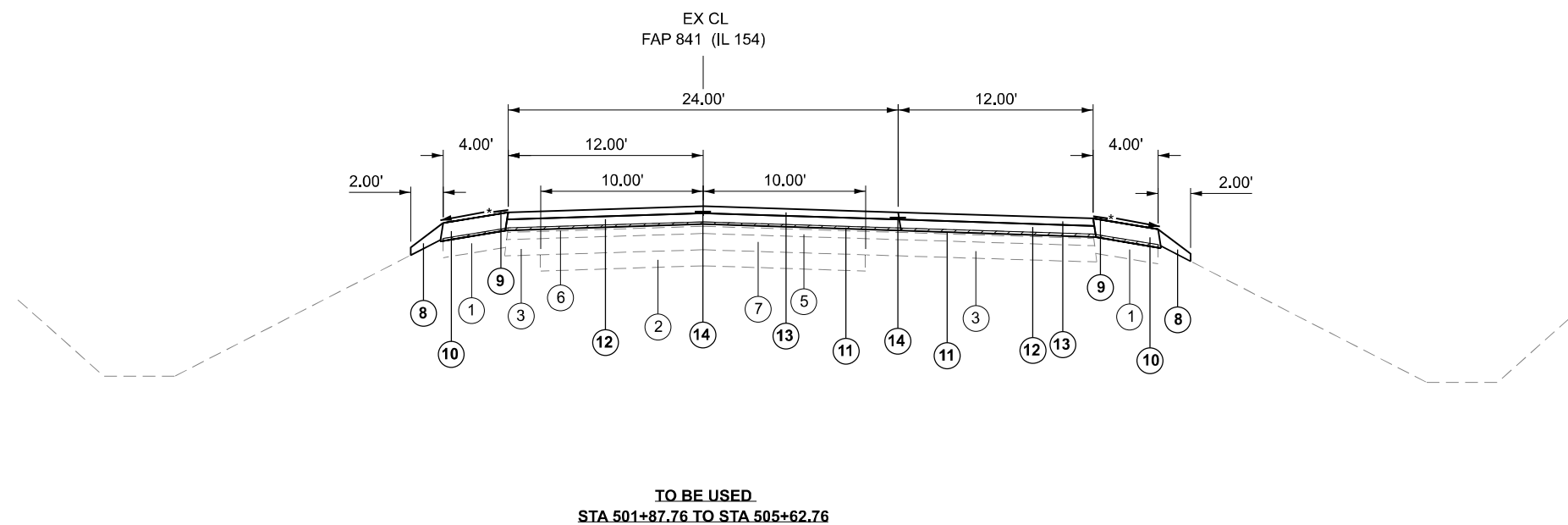
F.A.P. RTE.	SECTION	COUNTY	TOTAL SHEETS	SHEET NO.
841	(108,34.35)RS-4,126RS-5	*	48	13
CONTRACT NO. 78A47				

ILLINOIS FED. AID PROJECT \*PERRY/FRANKLIN



- | <u>EXISTING</u>  | <u>PROPOSED</u>                 |
|--|---------------------------------|
| ① EX HMA SHOULDER 8"   | ⑧ PR AGG WEDGE SHOULDER, TY, B  |
| ② EX AGG BASE COURSE 6" TO 9"  | ⑨ PR SHOULDER RUMBLE STRIP 8"   |
| ③ EX HMA BASE COURSE WIDENING 9"                                     | ⑩ PR HMA SHOULDER 3 3/4"        |
| ④ EX PCC PAVEMENT 8 1/2"   | ⑪ PR HMA SURFACE REMOVAL 1/2"   |
| ⑤ EX HMA BINDER 2"   | ⑫ PR HMA BINDER COURSE 2-1/4"   |
| ⑥ EX HMA SURFACE 1 1/2"  | ⑬ PR HMA SURFACE COURSE 1 1/2"  |
| ⑦ EX HMA OVERLAY 2 1/2" W MULTIPLE A-1 SURF TREATMENTS 2 1/2"-4 1/2" | ⑭ PR LONGITUDINAL JOINT SEALANT |

**NOTES:**  
 \*MATCH EX PAVEMENT CROSS SLOPE  
 TYPICALS NOT TO SCALE  
 LONGITUDINAL JOINT SEALANT  
 TO BE PLACED BETWEEN  
 BINDER AND SURFACE COURSE



MODEL: TYPICAL SECTION IL 154-6 (Sheet)  
 FILE NAME: c:\p\work\project\lay\p\m\c\025227D9xxx-ShtD-Typical6.dgn

USER NAME = Nathan.Taylor	DESIGNED -	REVISED -
	DRAWN -	REVISED -
PLOT SCALE = 0.16666833' / in.	CHECKED -	REVISED -
PLOT DATE = 12/14/2023	DATE -	REVISED -

**STATE OF ILLINOIS  
 DEPARTMENT OF TRANSPORTATION**

<b>TYPICAL SECTIONS IL 154</b>			
SCALE:	SHEET	OF 48 SHEETS	STA. TO STA.

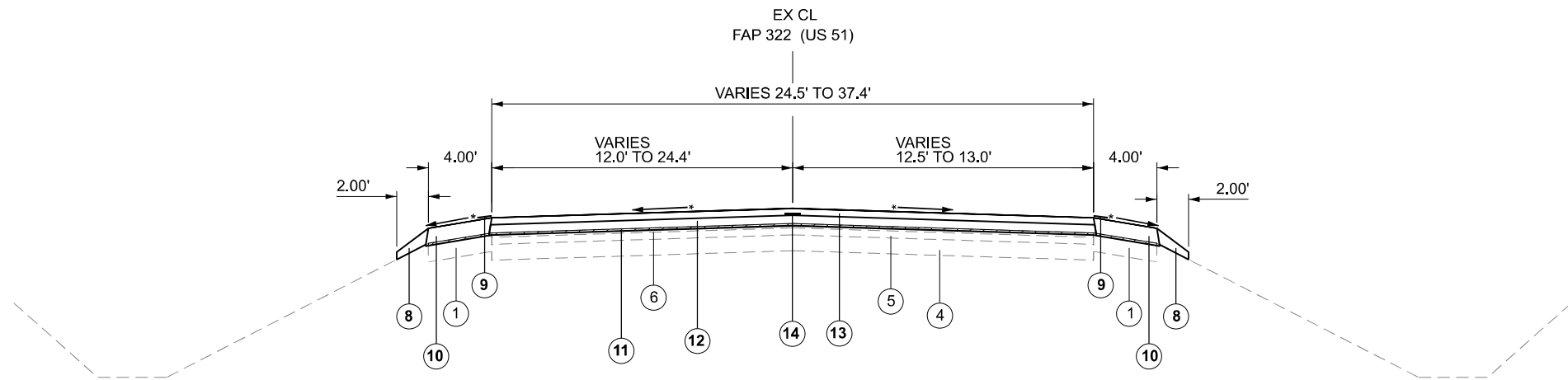
F.A.P. RTE.	SECTION	COUNTY	TOTAL SHEETS	SHEET NO.
841	(108,34,35)RS-4,126RS-5	*	48	14
CONTRACT NO. 78A47				
ILLINOIS		FED. AID PROJECT		

\*PERRY/FRANKLIN









**TO BE USED**  
**STA 194+84.39 TO STA 198+72.00**

**EXISTING**

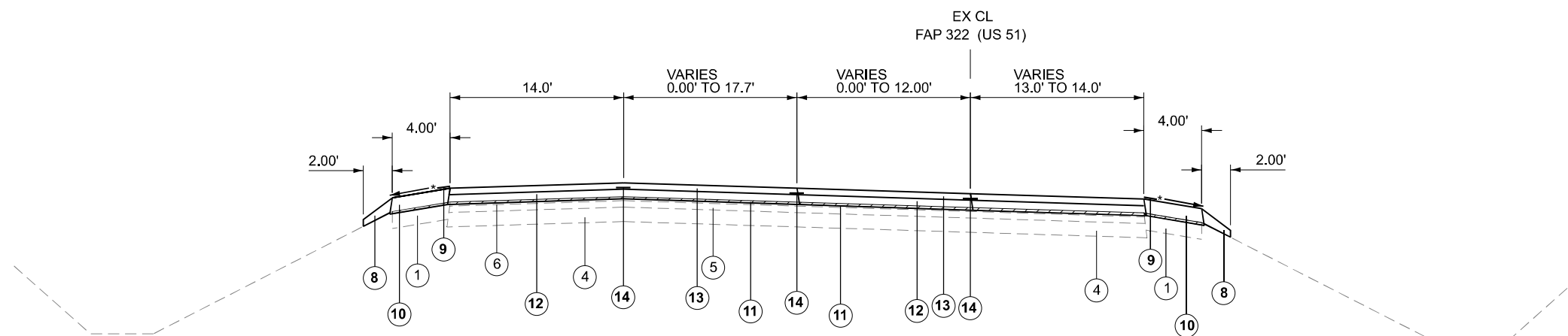
- ① EX HMA SHOULDER 8"
- ② EX AGG BASE COURSE 6" TO 9"
- ③ EX HMA BASE COURSE WIDENING 9"
- ④ EX PCC PAVEMENT 8 1/2"
- ⑤ EX HMA BINDER 2"
- ⑥ EX HMA SURFACE 1 1/2"
- ⑦ EX HMA OVERLAY 2 1/2" W MULTIPLE A-1 SURF TREATMENTS 2 1/2"-4 1/2"

**PROPOSED**

- ⑧ PR AGG WEDGE SHOULDER, TY, B
- ⑨ PR SHOULDER RUMBLE STRIP 8"
- ⑩ PR HMA SHOULDER 3 3/4"
- ⑪ PR HMA SURFACE REMOVAL 1/2"
- ⑫ PR HMA BINDER COURSE 2-1/4"
- ⑬ PR HMA SURFACE COURSE 1 1/2"
- ⑭ PR LONGITUDINAL JOINT SEALANT

**NOTES:**

\*MATCH EX PAVEMENT CROSS SLOPE  
 TYPICALS NOT TO SCALE  
 LONGITUDINAL JOINT SEALANT  
 TO BE PLACED BETWEEN  
 BINDER AND SURFACE COURSE



**TO BE USED**  
**STA 198+72.00 TO STA 206+96.61**

MODEL: TYPICAL SECTION US 51-1 [Sheet]  
 FILE NAME: c:\p\work\pav\road\typical\0925227D9xxx-SHM-Typical.dgn

USER NAME = Nathan.Taylor	DESIGNED -	REVISED -
	DRAWN -	REVISED -
PLOT SCALE = 0.16666833' / in.	CHECKED -	REVISED -
PLOT DATE = 12/14/2023	DATE -	REVISED -

**STATE OF ILLINOIS**  
**DEPARTMENT OF TRANSPORTATION**

**TYPICAL SECTIONS**  
**US 51**

SCALE: SHEET OF 48 SHEETS STA. TO STA.

F.A.P. RTE.	SECTION	COUNTY	TOTAL SHEETS	SHEET NO.
841	(108,34,35)RS-4,126RS-5	*	48	17
CONTRACT NO. 78A47				

ILLINOIS FED. AID PROJECT

\*PERRY/FRANKLIN





## HMA PAVEMENT SCHEDULE

LOCATION STATION TO STATION	EXIST. PAVEMENT LENGTH (INFO ONLY)	EXIST. PAVEMENT WIDTH (INFO ONLY)	TEMPORARY RAMPS	HMA BINDER CSE IL-19.0, N70 (2 1/4")	HMA SURFACE CSE MIX D, N70 (1 1/2")	MATERIAL TRANSFER DEVICE	HMA SURFACE REMOVAL, (1/2")	HMA VARIABLE DEPTH REMOVAL	HMA SURFACE REMOVAL BUTT JOINT	HMA SURFACE REMOVAL, (3 1/2")	LONGITUDINAL JOINT SEALANT	BITUMINOUS MATERIALS (TACK COAT)
	FOOT	FOOT	SQ YD	TON	TON	TON	SQ YD	SQ YD	SQ YD	SQ YD	FOOT	POUND
<b>IL 154 West of US 51</b>												
STA 402+68 TO STA 403+07	39	24	32	14	9	23			103		39	70
STA 403+07 TO STA 403+33	26	25		10	7	17		72			27	49
STA 403+33 TO STA 406+57	324	32		145	96	241	1,133				648	765
STA 406+57 TO STA 407+87	131	38		71	47	118	552				262	373
STA 407+87 TO STA 408+72	85	38		46	31	77		359			170	242
STA 408+72 19' LT TO STA 409+82 78' LT	109	17		27	18	45				207	110	140
STA 409+16 19' RT TO STA 409+82 153' RT	66	27		26	17	43				198	66	134
STA 408+72 TO STA 409+81	109	38	266	59	39	98				462	220	312
<b>TOTALS IL 154 WEST OF US 51</b>			<b>298</b>	<b>398</b>	<b>264</b>	<b>662</b>	<b>1,685</b>	<b>431</b>	<b>103</b>	<b>867</b>	<b>1,542</b>	<b>2,085</b>

## HMA PAVEMENT SCHEDULE

LOCATION STATION TO STATION	EXIST. PAVEMENT LENGTH (INFO ONLY)	EXIST. PAVEMENT WIDTH (INFO ONLY)	TEMPORARY RAMPS	HMA BINDER CSE IL-19.0, N70 (2 1/4")	HMA SURFACE CSE MIX D, N70 (1 1/2")	MATERIAL TRANSFER DEVICE	HMA SURFACE REMOVAL, (1/2")	HMA SURFACE REMOVAL, (Variable Depth)	HMA SURFACE REMOVAL BUTT JOINT	HMA SURFACE REMOVAL, (3 1/2")	LONGITUDINAL JOINT SEALANT	BITUMINOUS MATERIALS (TACK COAT)
	FOOT	FOOT	SQ YD	TON	TON	TON	SQ YD	SQ YD	SQ YD	SQ YD	FOOT	POUND
<b>US 51</b>												
STA 194+84 TO STA 195+14	30	24	34	11	7	18			81		31	55
STA 195+14 TO STA 195+49	35	25		13	9	22		96			35	65
STA 195+49 TO STA 201+94	645	36		326	215	541	2,550				1,292	1,721
STA 201+94 TO STA 205+56	362	46		236	156	392	1,851				726	1,250
STA 205+56 TO STA 206+16	60	46		40	26	66		307			120	207
STA 206+16 TO STA 208+71	254	46		166	110	276				1,300	510	878
STA 208+71 TO STA 209+31	60	46		40	26	66		307			120	207
STA 209+31 TO STA 212+92	361	46		235	156	391	1,848				724	1,248
STA 212+92 TO STA 219+72	680	36		348	230	578	2,725				1,360	1,840
STA 219+37 TO STA 219+72	35	26		13	9	22		100			35	68
STA 219+72 TO STA 220+02	30	25	34	11	8	19			84		30	57
<b>TOTALS US 51</b>			<b>68</b>	<b>1,439</b>	<b>952</b>	<b>2,391</b>	<b>8,974</b>	<b>810</b>	<b>165</b>	<b>1,300</b>	<b>4,983</b>	<b>7,596</b>

MODEL: PAVEMENT SCHEDULE-1 (Sheet)  
FILE NAME: c:\p\work\wtd\lay\mcd\025227\09xxx-Site-Schedules.dgn

USER NAME = Nathan.Taylor	DESIGNED -	REVISED -	<b>STATE OF ILLINOIS DEPARTMENT OF TRANSPORTATION</b>	<b>RESURFACING SCHEDULE</b>				F.A.P. RTE.	SECTION	COUNTY	TOTAL SHEETS	SHEET NO.	
PLOT SCALE = 0.16666833' / in.	CHECKED -	REVISED -		SCALE:	SHEET	OF	48	SHEETS	STA.	TO	STA.	48	20
PLOT DATE = 12/14/2023	DATE -	REVISED -						(108,34.35)RS-4,126RS-5		CONTRACT NO. 78A47			
								ILLINOIS		FED. AID PROJECT		*PERRY/FRANKLIN	

## HMA PAVEMENT SCHEDULE

LOCATION STATION TO STATION	EXIST. PAVEMENT LENGTH (INFO ONLY)	EXIST. PAVEMENT WIDTH (INFO ONLY)	TEMPORARY RAMPS	HMA BINDER CSE IL-19.0, N70 (2 1/4")	HMA SURFACE CSE MIX D, N70 (1 1/2")	MATERIAL TRANSFER DEVICE	HMA SURFACE REMOVAL, (1/2")	HMA SURFACE REMOVAL, (1 1/2")	HMA SURFACE REMOVAL, (Variable Depth)	HMA SURFACE REMOVAL BUTT JOINT	HMA SURFACE REMOVAL, (3 1/2")	LONGITUDINAL JOINT SEALANT	BITUMINOUS MATERIALS (TACK COAT)
	FOOT	FOOT	SQ YD	TON	TON	TON	SQ YD	SQ YD	SQ YD	SQ YD	SQ YD	FOOT	POUND
<b>IL 154 East of US 51 in Perry County</b>													
STA 0+23 LT TO STA 0+88 LT	64	40	266	37	25	62					287	65	194
STA 0+23 RT TO STA 1+57 RT	134	34		65	43	108					507	135	342
STA 0+88 LT TO STA 1+57 LT	70	19		19	13	32					148	70	100
STA 1+57 TO STA 2+22	65	38		35	24	59		275				130	186
STA 2+22 TO STA 3+49	126	38		68	45	113	534					254	361
STA 3+49 TO STA 6+96	347	31		153	101	254	1,197					348	808
STA 6+96 TO STA 6+99	3	24		1	1	2				7		3	5
STA 6+99 TO STA 7+61	62	24	29	22	15	37				167		63	113
STA 7+61 OMIT TO STA 7+65 OMIT	4												
STA 7+65 TO STA 8+30	65	24	29	23	15	38				174		65	117
STA 8+30 TO STA 29+36	2,106	24		721	475	1,196	5,616					2,106	3,791
STA 29+36 BK TO STA 29+37 AH													
STA 29+37 TO STA 42+43	1,306	24		447	295	742	3,404					1,307	2,352
STA 42+43 BK TO STA 42+45 AH													
STA 42+45 TO STA 61+99	1,954	24		669	440	1,109	5,210					1,954	3,517
STA 61+99 TO STA 62+64	65	24		23	15	38		174				65	117
STA 62+64 TO STA 63+96	132	24	14		30	30		352				132	159
STA 63+96 OMIT TO STA 65+39 OMIT	143												
STA 65+39 TO STA 67+00	161	24	14		37	37		430				161	194
STA 67+00 TO STA 67+65	65	24		23	15	38		174				65	117
STA 67+65 TO STA 102+01	3,436	24		1,176	774	1,950	9,163					3,436	6,185
STA 102+01 BK TO STA 102+03 AH													
STA 102+03 TO STA 155+25	5,322	24		1,821	1,199	3,020	14,192					5,322	9,580
STA 155+25 BK TO STA 155+28 AH													
STA 155+28 TO STA 230+68	7,541	24		2,580	1,698	4,278	20,109					7,541	13,574
STA 230+68 TO STA 231+33	65	24	34	23	15	38				174		65	117
STA 231+33 OMIT TO STA 233+03 OMIT	170												
STA 233+03 TO STA 233+68	65	24	34	23	15	38				174		65	117
STA 233+68 TO STA 304+67	7,100	24		2,429	1,599	4,028	18,933					7,100	12,780
STA 304+67 BK TO STA 304+68 AH													
STA 304+68 TO STA 342+55	3,787	24		1,296	853	2,149	10,098					3,787	6,816
STA 342+55 TO STA 343+20	65	24	34	23	15	38				174		65	117
STA 343+20 OMIT TO STA 345+00 OMIT	180	24										180	324
STA 345+00 TO STA 345+65	65	24	34	23	15	38				174		65	117
STA 345+65 TO STA 348+07	242	24		83	55	138	646					243	436
STA 348+07 BK TO STA 348+08 AH	0	24											
<b>TOTALS IL 154 EAST OF US 51 PERRY</b>			<b>488</b>	<b>11,783</b>	<b>7,827</b>	<b>19,610</b>	<b>89,182</b>	<b>782</b>	<b>623</b>	<b>1,044</b>	<b>942</b>	<b>34,792</b>	<b>62,636</b>

MODEL: PAVEMENT SCHEDULE-2 (Sheet)  
FILE NAME: c:\pav\_work\perry\hwy\mcd\025227D9xxx-Site-Schedule.dgn

USER NAME = Nathan.Taylor	DESIGNED -	REVISED -	<b>STATE OF ILLINOIS DEPARTMENT OF TRANSPORTATION</b>	<b>RESURFACING SCHEDULE</b>				F.A.P RTE.	SECTION	COUNTY	TOTAL SHEETS	SHEET NO.
PLOT SCALE = 0.16666833' / in.	DRAWN -	REVISED -		SCALE:	SHEET	OF 48 SHEETS	STA.	TO STA.	841	(108,34,35)RS-4,126RS-5	*	48 21
PLOT DATE = 12/14/2023	CHECKED -	REVISED -						CONTRACT NO. 78A47				
	DATE -	REVISED -						ILLINOIS FED. AID PROJECT				

## HMA PAVEMENT SCHEDULE

LOCATION STATION TO STATION	EXIST. PAVEMENT LENGTH (INFO ONLY)	EXIST. PAVEMENT WIDTH (INFO ONLY)	TEMPORARY RAMPS	HMA BINDER CSE IL-19.0, N70 (2 1/4")	HMA SURFACE CSE MIX D, N70 (1 1/2")	MATERIAL TRANSFER DEVICE	HMA SURFACE REMOVAL, (1/2")	HMA SURFACE REMOVAL, (Variable Depth)	HMA SURFACE REMOVAL BUTT JOINT	HMA SURFACE REMOVAL, (3 1/2")	LONGITUDINAL JOINT SEALANT	BITUMINOUS MATERIALS (TACK COAT)
	FOOT	FOOT	SQ YD	TON	TON	TON	SQ YD	SQ YD	SQ YD	SQ YD	FOOT	POUND
<b>IL 154 East of US 51 in Franklin County</b>												
STA 348+08 TO STA 352+61	453	24		155	102	257	1,208				453	816
STA 352+61 TO STA 353+26	65	24	34	23	15	38		174			65	117
STA 353+26 OMIT TO STA 354+59 OMIT	133	24										
STA 354+59 TO STA 355+24	65	24	34	23	15	38		174			65	117
STA 355+24 TO STA 398+24	4,300	24		1,472	969	2,441	11,467				4,301	7,741
STA 398+24 BK TO STA 398+24 AH												
STA 398+24 TO STA 430+93	3,269	24		1,119	737	1,856	8,717				3,269	5,884
STA 430+93 TO STA 431+58	65	24	34	23	15	38		174			65	117
STA 431+58 OMIT TO STA 432+95 OMIT	137											
STA 432+95 TO STA 433+60	65	24	34	23	15	38		174			65	117
STA 433+60 TO STA 470+07	3,648	24		1,248	822	2,070	9,728				3,648	6,566
STA 470+07 BK TO STA 470+11 AH												
STA 470+11 TO STA 497+08	2,697	24		923	608	1,531	7,192				2,697	4,855
STA 497+08 TO STA 501+88	480	30		205	135	340	1,600				960	1,080
STA 501+88 TO STA 505+63	375	36		192	127	319	1,500				750	1,013
STA 505+63 TO STA 510+43	480	30		205	135	340	1,600				960	1,080
STA 510+43 TO STA 533+72	2,329	24		797	525	1,322	6,212				2,330	4,193
STA 533+72 TO STA 537+00	328	30		140	93	233	1,094				656	738
STA 537+00 TO STA 539+52	252	36		129	85	214	1,008				504	680
STA 539+52 TO STA 540+12	60	36		31	21	52		240			120	162
STA 540+12 TO STA 541+18	106	36		55	36	91			424		106	287
STA LT 540+12 TO STA LT 541+18	106	17		25	17	42				195	107	132
STA RT 539+83 TO STA RT 541+18	135	20	278	39	26	65				301	136	203
<b>TOTALS IL 154 EAST OF US 51 IN</b>			<b>414</b>	<b>6,827</b>	<b>4,498</b>	<b>11,325</b>	<b>51,326</b>	<b>240</b>	<b>696</b>	<b>920</b>	<b>21,257</b>	<b>35,898</b>

MODEL: PAVEMENT SCHEDULE-3 (Sheet)  
FILE NAME: c:\p\work\pav\td\lay\mcd\025227\09xxx-Site-Schedules.dgn

USER NAME = Nathan.Taylor	DESIGNED -	REVISED -
	DRAWN -	REVISED -
PLOT SCALE = 0.16666633' / in.	CHECKED -	REVISED -
PLOT DATE = 12/14/2023	DATE -	REVISED -

**STATE OF ILLINOIS  
DEPARTMENT OF TRANSPORTATION**

**RESURFACING SCHEDULE**

SCALE: SHEET OF 48 SHEETS STA. TO STA.

F.A.P RTE.	SECTION	COUNTY	TOTAL SHEETS	SHEET NO.
841	(108,34,35)RS-4,126RS-5	*	48	22
CONTRACT NO. 78A47				
ILLINOIS FED. AID PROJECT				



## SHOULDER SCHEDULE IL 154 E OF US 51 (PERRY COUNTY)

LOCATION STATION TO STATION	EXIST. SHOULDER	EXIST. SHOULDER	PROPOSED SHOULDER	HMA SHOULDERS	HMA SURFACE	HMA SURFACE	HMA SURFACE	HMA SURFACE	AGG WEDGE SHOULDER TYPE B	BITUMINOUS MATERIALS (TACK COAT)	SHOULDER RUMBLE STRIPS 8"	COMMENTS
	LENGTH (INFO ONLY)	WIDTH (INFO ONLY)	WIDTH (INFO ONLY)	TON	REMOVAL, 1/2" SQ YD	REMOVAL, (Variable Depth) SQ YD	REMOVAL, 3 1/2" SQ YD	TON	POUND	FOOT		
<b>SHOULDER LOCATION IL 154 E OF US 51 PERRY COUNTY</b>												
STA 0+80 LT TO STA 1+57 LT	77	4	4	7			35	2	24	77		
STA 1+19 RT TO STA 1+57 RT	38	4	4	4			18	1	12	38		
STA 1+57 TO STA 2+22	65	8	8	12		58		4	39	130	2-4' SHOULDERS	
STA 2+22 TO STA 6+96	474	8	8	88	422			24	285	947	2-4' SHOULDERS	
STA 6+96 TO STA 7+61	65	8	8	12		58		4	39	130	2-4' SHOULDERS	
STA 7+65 TO STA 8+30	65	8	8	12		58		4	39	130	2-4' SHOULDERS	
STA 8+30 TO STA 29+36	2,106	8	8	393	1,872			100	1,264	4,212	2-4' SHOULDERS	
STA 29+37 TO STA 42+43	1,306	8	8	244	1,162			62	784	2,313	2-4' SHOULDERS	
STA 42+45 TO STA 61+99	1,954	8	8	365	1,737			94	1,173	3,692	2-4' SHOULDERS	
STA 61+99 TO STA 62+64	65	8	8	12		58		4	39	130	2-4' SHOULDERS	
STA 62+64 RT TO STA 63+96 RT	132							8		132		
STA 66+75 LT TO STA 67+00 LT	25	4	4	3		12			5	25	1 1/2" INLAY SECTION	
STA 67+00 TO STA 67+65	65	8	8	12		58		4	39	130	2-4' SHOULDERS	
STA 67+65 TO STA 102+01	3,436	8	8	642	3,055			164	2,062	6,422	2-4' SHOULDERS	
STA 102+03 TO STA 155+25	5,322	8	8	994	4,731			254	3,194	10,323	2-4' SHOULDERS	
STA 155+28 TO STA 230+68	7,541	8	8	1,408	6,703			358	4,525	14,659	2-4' SHOULDERS	
STA 230+68 TO STA 231+33	65	8	8	12		58		4	39	130	2-4' SHOULDERS	
STA 233+03 TO STA 233+68	65	8	8	12		58		4	39	130	2-4' SHOULDERS	
STA 233+68 TO STA 304+67	7,100	8	8	1,325	6,311			338	4,260	13,994	2-4' SHOULDERS	
STA 304+68 TO STA 342+55	3,787	8	8	707	3,366			180	2,272	7,255	2-4' SHOULDERS	
STA 342+55 TO STA 343+20	65	8	8	12		58		4	39	130	2-4' SHOULDERS	
STA 345+00 TO STA 345+65	65	8	8	12		58		4	39	130	2-4' SHOULDERS	
STA 345+65 TO STA 348+07	242	8	8	45	216			12	146	484	2-4' SHOULDERS	
<b>TOTALS IL 154 E OF US 51 PERRY COUNTY</b>				<b>6,333</b>	<b>29,575</b>	<b>534</b>	<b>53</b>	<b>1,633</b>	<b>20,357</b>	<b>65,746</b>		

MODEL: SHOULDER SCHEDULE\_2 (Sheet)  
 FILE NAME: c:\p\work\perry\il154\perry\mtd\026227\09xxx-Site-Schedule.dgn

USER NAME = Nathan.Taylor DESIGNED - DRAWN - PLOT SCALE = 0.16666833' / in. CHECKED - PLOT DATE = 12/14/2023 DATE -	REVISED - REVISED - REVISED - REVISED -	<b>STATE OF ILLINOIS</b> <b>DEPARTMENT OF TRANSPORTATION</b>	<b>SHOULDER SCHEDULE</b>	F.A.P RTE. 841 SECTION (108,34.35)RS-4,126RS-5 COUNTY * TOTAL SHEETS 48 SHEET NO. 24 CONTRACT NO. 78A47 ILLINOIS FED. AID PROJECT	SCALE: SHEET OF 48 SHEETS STA. TO STA.
---	--	---	--------------------------	--	--







# ENTRANCE AND SIDE ROAD

E OF US 51 PERRY COUNTY			IL 154					
SIDE	ENTRANCE TYPE	EX. SURFACE	LENGTH (FOOT)	WIDTH (FOOT)	INCIDENTAL HOT-MIX ASPHALT	AGG. WEDGE SHOULDER TYPE B	HMA SURFACE REMOVAL BUTT JOINT	TEMPORARY RAMPS
			(INFO ONLY)	(INFO ONLY)	TONS	TONS	SQ YD	SQ YD
RT	PE	AGG	34	3		1		
LT	PE	AGG	36	3		1		
LT	PE	AGG	28	3		1		
LT	FE	AGG	15	1		1		
RT	FE	AGG	20	1		1		
RT	FE	AGG	20	1		1		
LT	PE	HMA	50	6	4			
LT	MB	HMA	42	4	2			
LT	MB	HMA	56	3	2			
RT	PE	HMA	30	6	2			
RT	PE	HMA	28	6	2			
LT	MB	HMA	55	3	2			
RT	PE	AGG	34	1		1		
RT	FE	AGG	12	1		1		
RT	PE	HMA	50	6	4			
LT	MB	HMA	44	3	2			
LT	MB	HMA	40	3	2			
RT	PE	HMA	19	6	1			
RT	PE	AGG	23	1		2		
LT	MB	HMA	30	3	1			
RT	CE	HMA	40	13	8		58	22
LT	MB	HMA	37	3	1			
RT	PE	AGG	32	1		1		
LT	PE	AGG	23	3		1		
LT	MB	HMA	72	3	3			
LT	PE	AGG	18	3		1		
LT	MB	HMA	49	3	2			
RT	PE	AGG	27	1		1		
LT	MB	HMA	47	3	2			
RT	PE	HMA	45	6	3			
LT	PE	AGG	21	1		1		
LT	PE	PCC	30	4	2			
LT	MB	HMA	35	3	1			
RT	CE	HMA	68	6	5		45	38
LT	MB	HMA	70	3	3			
LT	PE	AGG	15	3		2		
LT	PE	AGG	28	3		2		
LT	CE	HMA	56	12	11		75	32
RT	PE	AGG	51	1		1		
RT	PE	AGG	40	1		1		
RT	FE	AGG	30	3		1		
LT	MB	HMA	57	4	3			
LT	PE	AGG	20	3		1		
<b>PROJECT TOTAL LOCATION PERRY COUNTY SCHEDULE 1</b>					<b>68</b>	<b>23</b>	<b>178</b>	<b>92</b>

MODEL: ENTRANCE SCHEDULE-2 (Sheet)  
FILE NAME: c:\p\work\perry\lay\perry\026227\09xxx-Site-Schedule.dgn

USER NAME = Nathan.Taylor	DESIGNED -	REVISED -
	DRAWN -	REVISED -
PLOT SCALE = 0.16666833' / in.	CHECKED -	REVISED -
PLOT DATE = 12/14/2023	DATE -	REVISED -

**STATE OF ILLINOIS  
DEPARTMENT OF TRANSPORTATION**

**ENTRANCE SCHEDULE**

SCALE: SHEET OF 48 SHEETS STA. TO STA.

F.A.P. RTE.	SECTION	COUNTY	TOTAL SHEETS	SHEET NO.
841	(108,34.35)RS-4,126RS-5	*	48	27
CONTRACT NO. 78A47				
ILLINOIS FED. AID PROJECT				



# ENTRANCE AND SIDE ROAD

E OF US 51 FRANKLIN COUNTY			IL 154					
SIDE	ENTRANCE TYPE	EX. SURFACE	LENGTH (FOOT)	WIDTH (FOOT)	INCIDENTAL HOT-MIX ASPHALT	AGG. WEDGE SHOULDER TYPE B	HMA SURFACE REMOVAL BUTT JOINT	TEMPORARY RAMPS
			(INFO ONLY)	(INFO ONLY)	TONS	TONS	SQ YD	SQ YD
RT	PE	AGG	72	1		1		
RT	PE	AGG	80	1		1		
RT	PE	HMA	56	3	2			
RT	MB	HMA	34	5	2			
RT	PE	HMA/AGG	46	3	2			
RT	PE	HMA	69	3	3			
RT	PE	HMA/AGG	42	3	2			
RT	PE	HMA/AGG	52	3	2			
LT	CE	HMA	42	15	10		70	23
RT	CE	HMA	49	15	10		82	27
LT	PE	AGG	90	1		1		
LT	MB	HMA	30	3	1			
LT	MB	HMA/AGG	48	3	2			
LT	MB	HMA/AGG	46	3	2			
RT	CE	HMA	63	15	11		105	35
RT	PE	HMA	15	6	1			
LT	PE	HMA	38	6	3			
RT	PE	HMA	45	6	3			
RT	PE	HMA	42	6	3			
RT	CE	HMA	30	15	7		50	17
LT	CE	HMA	57	15	13		95	32
LT	FE	AGG	34	1		1		
RT	PE	AGG	43	1		1		
RT	CE	HMA	76	15	17		127	43
LT	PE	HMA	24	6	2			
LT	PE	HMA	40	6	3			
RT	MB	HMA	23	3	1			
RT	PE	HMA	74	6	5			
RT	PE	HMA	24	6	2			
RT	PE	HMA	22	6	2			
RT	PE	HMA	38	6	3			
<b>PROJECT TOTAL LOCATION FRANKLIN COUNTY</b>					<b>114</b>	<b>5</b>	<b>529</b>	<b>178</b>

MODEL: ENTRANCE SCHEDULE-4 (Sheet)  
FILE NAME: c:\p\work\franklin\lay\frank026227D9xxx-Site-Schedules.dgn

USER NAME = Nathan.Taylor	DESIGNED -	REVISED -
	DRAWN -	REVISED -
PLOT SCALE = 0.16666833' / in.	CHECKED -	REVISED -
PLOT DATE = 12/14/2023	DATE -	REVISED -

**STATE OF ILLINOIS  
DEPARTMENT OF TRANSPORTATION**

**ENTRANCE SCHEDULE**

SCALE: SHEET OF 48 SHEETS STA. TO STA.

F.A.P. RTE.	SECTION	COUNTY	TOTAL SHEETS	SHEET NO.
841	(108,34.35)RS-4,126RS-5	*	48	29
CONTRACT NO. 78A47				

ILLINOIS FED. AID PROJECT



# PAVEMENT MARKING SCHEDULE

LOCATION STATION TO STATION	STATION LT/RT	LENGTH	MODIFIED URETHANE PAVEMENT MARKING						LETTERS AND SYMBOLS	RAISED REFLECTIVE PAVEMENT MARKER	RAISED REFLECTIVE PAVEMENT MARKER REMOVAL	REMARKS	
			LINE 4"			LINE 12"		LINE 24"					
			YELLOW			WHITE		YELLOW					WHITE
			DBL SOLID	SOLID	SKIP DASH	SOLID							
			FOOT	FOOT	FOOT	FOOT	FOOT	FOOT	SQ FT	EACH	EACH		
<b>ILLINOIS 154 W of US 51</b>													
402+68 TO 403+06.8		39	77								1	1	SOLID DBL YELLOW
403+07 TO 406+57		350	1400								18	18	2xDBL LANE TAPER 12' LANES W 0' SPACE TO 14'
406+57 TO 408+37		180	720								10	10	2xDBL YELLOW LANE TAPER BEG. LTL EB
403+06.8 TO 408+36.8		530						185					12" SOLID DIAG. 45DEG 20' C-C
408+37 TO 409+51.8		115	230				115				10	10	WESTBOUND LTL STORAGE 115'
408+47 TO 408+54.8									20.8				ONLY
409+04.8 TO 409+13									15.6				LEFT TURN ARROW
409+51.8 TO 409+52													STOP BAR EASTBOUND
402+68.3 TO 408+72	LT	604					604						WB LANE EDGE LINE
402+68.3 TO 409+24	RT	655					598						EB LANE EDGE LINE
<b>SUBTOTALS</b>				<b>2427</b>	<b>0</b>	<b>0</b>	<b>1317</b>	<b>185</b>	<b>36</b>	<b>36</b>	<b>38</b>	<b>38</b>	
<b>TOTAL ILLINOIS 154 W of US 51</b>				<b>3745</b>				<b>185</b>	<b>36</b>	<b>36</b>	<b>38</b>	<b>38</b>	

MODEL: PAVEMENT MARKING SCHEDULE-1 [Sheet]  
 FILE NAME: c:\p\work\pavement\lay\pmd\092622\09xxxx-Site-Schedules.dgn

USER NAME = Nathan.Taylor	DESIGNED -	REVISED -
	DRAWN -	REVISED -
PLOT SCALE = 0.16666833' / in.	CHECKED -	REVISED -
PLOT DATE = 12/14/2023	DATE -	REVISED -

**STATE OF ILLINOIS  
DEPARTMENT OF TRANSPORTATION**

**PAVEMENT MARKING SCHEDULE**

SCALE: SHEET OF 48 SHEETS STA. TO STA.

F.A.P RTE.	SECTION	COUNTY	TOTAL SHEETS	SHEET NO.
841	(108,34,35)RS-4,126RS-5	*	48	31
CONTRACT NO. 78A47				

ILLINOIS FED. AID PROJECT

\*PERRY/FRANKLIN

# PAVEMENT MARKING SCHEDULE

LOCATION STATION TO STATION	STATION LT/RT	LENGTH	MODIFIED URETHANE PAVEMENT MARKING						LETTERS AND SYMBOLS	RAISED REFLECTIVE PAVEMENT MARKER	RAISED REFLECTIVE PAVEMENT MARKER REMOVAL	REMARKS		
			LINE 4"			LINE 12"		LINE 24"						
			YELLOW			WHITE								
			DBL SOLID	SOLID	SKIP DASH	SOLID		YELLOW					WHITE	
US 51			FOOT	FOOT	FOOT	FOOT	FOOT	FOOT	SQ FT	EACH	EACH			
194+84 TO 195+14.4		30	60								1	1	SOLID DBL YELLOW	
195+14 TO 201+94		680	2720								34	34	2xDBL YELLOW LANE TAPERS	
201+94 TO 204+44		250	1000								14	14	2xDBL YELLOW LANE TAPERS BEG. NB LTL	
195+14.4 TO 206+94.4		1180						477					12" SOLID DIAG. 45DEG 20' C-C	
204+44 TO 206+94.4		250	1000				250				20	20	LTL STORAGE NB 250'	
204+54 TO 204+62.4		8							20.8				ONLY	
205+12.4 TO 205+20		8							15.6				LEFT TURN ARROW	
206+94.4 TO 206+86										36			STOP BAR	
194+84 TO 206+66	RT	1182					1182						NB LANE EDGE LINE	
194+84 TO 206+16	LT	1132					1132						SB LANE EDGE LINE	
207+92 TO 208+03	LT									36			STOP BAR	
209+66 TO 209+74									15.6				LEFT TURN ARROW	
210+24 TO 210+32									20.8				ONLY	
207+92 TO 210+42		250	1000				250				20	20	LTL STORAGE SB 250'	
207+92 TO 219+72		1180						477					12" SOLID DIAG. 45 DEG 20' C-C	
210+42 TO 212+92		250	1000								14	14	2xDBL YELLOW LANE TAPERS SB LTL	
212+92 TO 219+72		680	2720								34	34	2xDBL YELLOW LANE TAPERS	
219+72 TO 220+02		30	60								1	1	SOLID DBL YELLOW	
208+71 TO 220+02	RT	1131					1131						NB LANE EDGE LINE	
208+22 TO 220+02	LT	1180					1180						SB LANE EDGE LINE	
<b>SUBTOTALS</b>			<b>9560</b>	<b>0</b>	<b>0</b>	<b>5126</b>	<b>954</b>	<b>72</b>	<b>73</b>	<b>136</b>	<b>136</b>			
<b>TOTAL US 51</b>			<b>14686</b>				<b>954</b>	<b>72</b>	<b>73</b>	<b>136</b>	<b>136</b>			

MODEL: PAVEMENT MARKING SCHEDULE-2 (Sheet)  
FILE NAME: c:\p\work\pav\td\lay\pmd\092627\09xxx-Site-Schedules.dgn

USER NAME = Nathan.Taylor	DESIGNED -	REVISED -
	DRAWN -	REVISED -
PLOT SCALE = 0.16666833' / in.	CHECKED -	REVISED -
PLOT DATE = 12/14/2023	DATE -	REVISED -

**STATE OF ILLINOIS  
DEPARTMENT OF TRANSPORTATION**

**PAVEMENT MARKING SCHEDULE**

SCALE: SHEET OF 48 SHEETS STA. TO STA.

F.A.P RTE.	SECTION	COUNTY	TOTAL SHEETS	SHEET NO.
841	(108,34,35)RS-4,126RS-5	*	48	32
CONTRACT NO. 78A47				
ILLINOIS FED. AID PROJECT				



# PAVEMENT MARKING SCHEDULE

LOCATION STATION TO STATION	STATION LT/RT	LENGTH FOOT	MODIFIED URETHANE PAVEMENT MARKING						LETTERS AND SYMBOLS SQ FT	RAISED REFLECTIVE PAVEMENT MARKER EACH	RAISED REFLECTIVE PAVEMENT MARKER REMOVAL EACH	REMARKS
			LINE 4"				LINE 12"	LINE 24"				
			YELLOW			WHITE	YELLOW	WHITE				
			DBL SOLID	SOLID	SKIP DASH	SOLID						
ILLINOIS 154 E of US 51			FOOT	FOOT	FOOT	FOOT	FOOT	FOOT				
+54 TO +61.		7						35			STOP BAR WESTBOUND	
+54 TO 1+69		115	230			115			10	10	EB LEFT TURN LANE STORAGE 115'	
1+69 TO 3+49		180	720						10	10	2xDBL YELLOW TAPER BEG. LTL WB	
1+69 TO 6+98.7		530					185				12" SOLID DIAG. 45DEG 20' C-C	
3+49 TO 6+98.7		350	1400						18	18	2xDBL LANE TAPER 12' LANES W 14' SPACE TO 0'	
+93 TO 1+00.7									15.6		LEFT TURN ARROW	
1+50.7 TO 1+59									20.8		ONLY	
2+90 TO 3+42	RT								111.0		RR MARKING EB LANE	
7+40 TO 7+42	RT	2						12			STOP BAR EB AT RR CROSSING	
6+99 TO 7+40		41	83								NPZ 2 WAY	
1+19 TO 7+61	RT										EB LANE EDGE LINE	
+80 TO 7+61	LT								17.6		WB LANE EDGE LINE	
7+84 TO 7+86	LT							12			STOP BAR WB AT RR CROSSING	
11+74 TO 12+26	LT								111.0		RR MARKING LINE WB LANE	
7+86 TO 14+66		680		680	170				9	9	NPZ WBL	
14+66 TO 164+50		14984			3746				187	187	PASSING ZONE	
59+80 TO 59+80	RT							10			KENDALE ACRES RD STOP BAR	
62+77 TO 62+77	LT							27			GOLDEN PLOVER RD STOP BAR	
93+70 TO 93+70	RT							14			BOX ELDER RD STOP BAR	
106+92 TO 106+92	LT							16			PINTAIL RD STOP BAR	
160+09 TO 160+09	LT							18			HITT RD STOP BAR	
164+50 TO 173+00		850		850	213				11	11	NPZ EBL	
173+00 TO 174+00		100	200						1	1	NPZ BOTH LANES	
173+25 TO 173+25	RT							15			MARLOW RD STOP BAR	
174+00 TO 180+57		657		657	164				8	8	NPZ WBL	
180+57 TO 265+00		8443			2111				106	106	PASSING ZONE	
212+92 TO 212+92	LT							16			EAGLE RD STOP BAR	
226+00 TO 226+00	RT							16			SPRUCE RD STOP BAR	
265+00 TO 273+90		890		890	223				11	11	NPZ EBL	
273+90 TO 275+90		200			50				3	3	PASSING ZONE	
275+90 TO 284+52		862		862	216				11	11	NPZ WBL	
284+52 TO 299+97		1545			386				19	19	PASSING ZONE	
299+97 TO 309+00		903		903	226				11	11	NPZ EBL	
300+58 TO 300+58	LT							21			GLADSON RD STOP BAR	
309+00 TO 310+80		180			45				2	2	PASSING ZONE	
310+80 TO 319+60		880		880	220				11	11	NPZ WBL	
314+29 TO 314+29	RT							15			THOMPSON RD STOP BAR	
319+60 TO 324+86		526			132				7	7	PASSING ZONE	
324+86 TO 333+56		870		870	218				11	11	NPZ EBL	
333+56 TO 334+65		109			27				1	1	PASSING ZONE	
334+65 TO 344+70		1005		1005	251				13	13	NPZ WBL	
340+87 TO 340+87	RT/LT							36			TITMOUSE RD STOP BARS	
7+65 TO 348+07		34042				33690					EB LANE EDGE LINE	
7+65 TO 348+07		34042				33625					WB LANE EDGE LINE	
<b>SUBTOTALS</b>			<b>2633</b>	<b>7597</b>	<b>8396</b>	<b>67430</b>	<b>185</b>	<b>263</b>	<b>276</b>	<b>458</b>	<b>459</b>	
<b>TOTAL IL 154 E of US 51 Perry County</b>			<b>86056</b>				<b>185</b>	<b>263</b>	<b>276</b>	<b>458</b>	<b>459</b>	

MODEL: PAVEMENT MARKING SCHEDULE-3 (Sheet)  
FILE NAME: c:\pwworking\td\lay\pmd\092627\09xxx-Site-Schedules.dgn

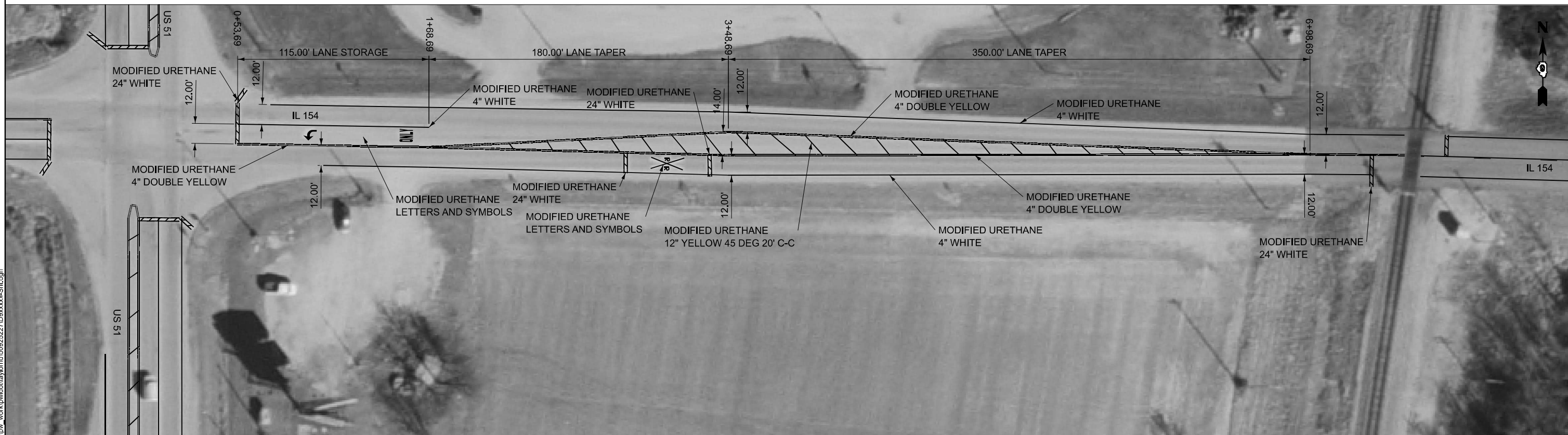
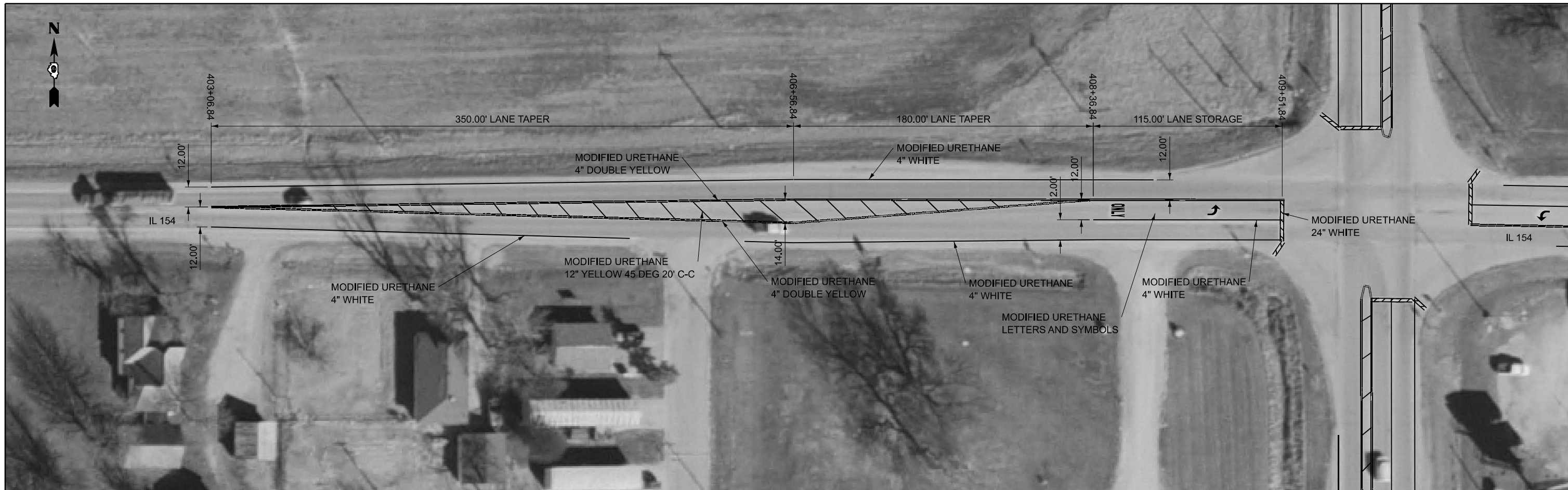
USER NAME = Nathan.Taylor	DESIGNED -	REVISED -	<b>STATE OF ILLINOIS DEPARTMENT OF TRANSPORTATION</b>	<b>PAVEMENT MARKING SCHEDULE</b>				F.A.P RTE.	SECTION	COUNTY	TOTAL SHEETS	SHEET NO.
PLOT SCALE = 0.16666833" / in.	CHECKED -	REVISED -		841	(108,34,35)RS-4,126RS-5	*	48	33				
PLOT DATE = 12/13/2023	DATE -	REVISED -		SCALE: SHEET OF 48 SHEETS STA. TO STA.				CONTRACT NO. 78A47				
							ILLINOIS FED. AID PROJECT		*PERRY/FRANKLIN			

# PAVEMENT MARKING SCHEDULE

LOCATION STATION TO STATION	STATION LT/RT	LENGTH FOOT	MODIFIED URETHANE PAVEMENT MARKING						LETTERS AND SYMBOLS SQ FT	RAISED REFLECTIVE PAVEMENT MARKER EACH	RAISED REFLECTIVE PAVEMENT MARKER REMOVAL EACH	REMARKS	
			LINE 4"			LINE 12"		LINE 24"					
			YELLOW			WHITE		YELLOW					WHITE
			DBL SOLID FOOT	SOLID FOOT	SKIP DASH FOOT	SOLID FOOT	FOOT						
ILLINOIS 154 E of US 51													
348+08 TO 466+14.		11806			2952					148	148	PASSING ZONE	
408+43 TO 408+43	LT/RT							36				CENTRAL RD STOP BARS	
466+14 TO 473+74		760	760	190					10	10		NPZ EBL	
473+74 TO 487+81.		1407	5628						18	18		NPZ BOTH LANES	
487+81 TO 497+08.		927	927	232					12	12		NPZ WBL	
474+05 TO 474+05.5	RT							15				BEAR POINT RD STOP BAR	
487+45. TO 487+45	LT							18				CIRCLE M RD STOP BAR	
497+07.8 TO 501+88		480	1920						24	24		2xDBL LANE TAPER 12' LANES W 0' SPACE TO 12'	
501+88 TO 502+16		28	111						2	2		LANE MEDIAN NOSING STRIPES	
497+08 TO 502+16							157					12" SOLID DIAG. 45DEG 20' C-C	
502+35 TO 502+35	RT							32				STOP BAR AT SESER SCHOOL ENTRANCE	
502+83 TO 503+83		100	200		100				10	10		WB LEFT TURN STORAGE LANE	
503+83 TO 505+63		180	720						6	6		WB LEFT TURN LANE TAPER	
505+63 TO 510+43		480	1920						24	24		2xDBL LANE TAPER 12' LANES W 12' SPACE TO 0'	
503+83 TO 510+43		660					248					12" SOLID DIAG. 45DEG 20' C-C	
503+07 TO 503+15		8							15.6			LEFT TURN ARROW	
503+65 TO 503+73		8							20.8			ONLY	
510+43 TO 533+91		2348		587					29	29		PASSING ZONE	
533+91 TO 536+91		300	1200						16	16		2xDBL LANE TAPER 12' LANES W 0' SPACE TO 12'	
536+91 TO 538+71		180	720						10	10		EB LEFT TURN LANE TAPER	
538+71 TO 540+71		200	400		200				30	30		EB LEFT TURN LANE	
540+71 TO 540+95		24			24			12	1	1		THRU LANE STOP BAR AND ADDITIONAL STRIPING	
540+95 TO 540+95								45				INTERSECTION STOP BARS	
539+00 TO 539+00									36.4			ONLY AND LEFT TURN ARROW	
533+91 TO 538+71		480					128					12" SOLID DIAG. 45DEG 20' C-C	
348+08 TO 540+12	LT	19204				19077						WB EDGE LANE LINE	
348+08 TO 540+12	RT	19204				18983						EB EDGE LANE LINE	
<b>SUBTOTALS</b>			<b>12819</b>	<b>1687</b>	<b>3960</b>	<b>38384</b>	<b>533</b>	<b>158</b>	<b>73</b>	<b>339</b>	<b>339</b>		
<b>TOTALS FRANKLIN COUNTY</b>						<b>56850</b>	<b>533</b>	<b>158</b>	<b>73</b>	<b>339</b>	<b>339</b>		
<b>IL 154 W OF US 51</b>						<b>3745</b>	<b>185</b>	<b>36</b>	<b>36</b>	<b>38</b>	<b>38</b>		
<b>US 51</b>						<b>14686</b>	<b>954</b>	<b>72</b>	<b>73</b>	<b>136</b>	<b>136</b>		
<b>IL 154 E OF US 51</b>						<b>86056</b>	<b>185</b>	<b>263</b>	<b>276</b>	<b>458</b>	<b>459</b>		
<b>TOTAL PERRY COUNTY</b>						<b>104487</b>	<b>1324</b>	<b>371</b>	<b>385</b>	<b>633</b>	<b>633</b>		
<b>TOTAL PROJECT</b>						<b>161337</b>	<b>1857</b>	<b>529</b>	<b>458</b>	<b>972</b>	<b>972</b>		

MODEL: PAVEMENT MARKING SCHEDULE-4 [Sheet]  
FILE NAME: c:\p\work\perry\lay\pmd\092627\09xxx-SHE-Schedules.dgn

USER NAME = Nathan.Taylor	DESIGNED -	REVISED -	<b>STATE OF ILLINOIS DEPARTMENT OF TRANSPORTATION</b>	<b>PAVEMENT MARKING SCHEDULE</b>	F.A.P. RTE. 841	SECTION (108,34,35)RS-4,126RS-5	COUNTY *	TOTAL SHEETS 48	SHEET NO. 34		
PLOT SCALE = 0.16666833' / in.	CHECKED -	REVISED -			SCALE:	SHEET OF 48 SHEETS	STA.	TO STA.	CONTRACT NO. 78A47		
PLOT DATE = 12/14/2023	DATE -	REVISED -			ILLINOIS   FED. AID PROJECT						
*PERRY/FRANKLIN											



MODEL: IL\_154\_E-3 [Sheet]  
 FILE NAME: c:\p\work\perry\franklin\mtd\0925227D\09xxxx-Sht.dgn

USER NAME = Nathan.Taylor	DESIGNED -	REVISED -
DRAWN -	REVISED -	
PLOT SCALE = 0.16666833' / in.	CHECKED -	REVISED -
PLOT DATE = 12/13/2023	DATE -	REVISED -

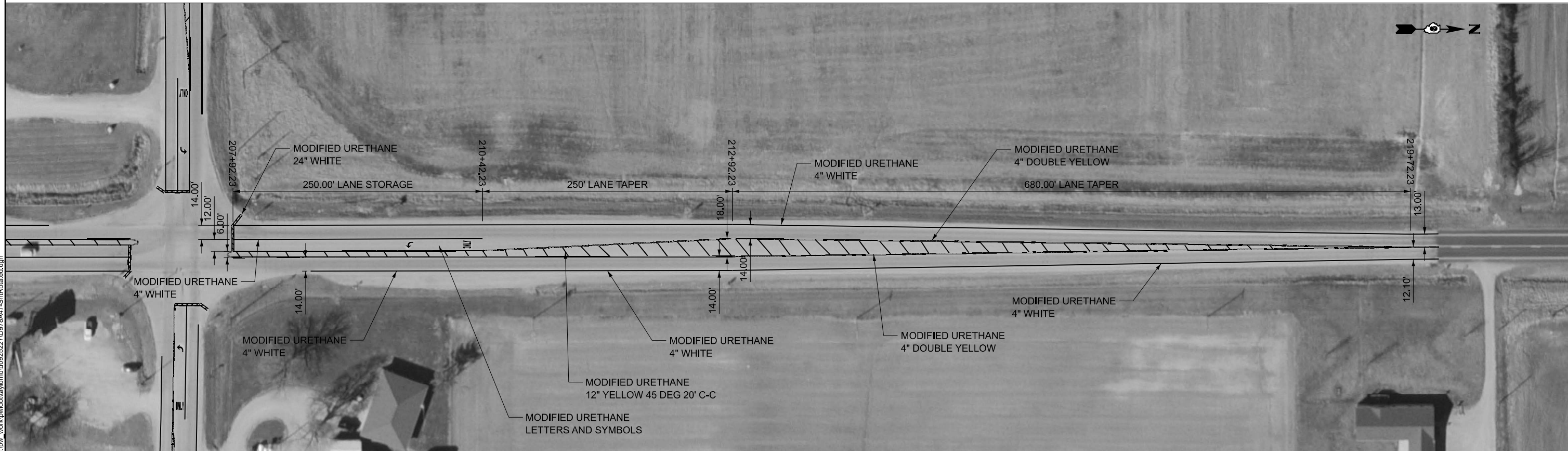
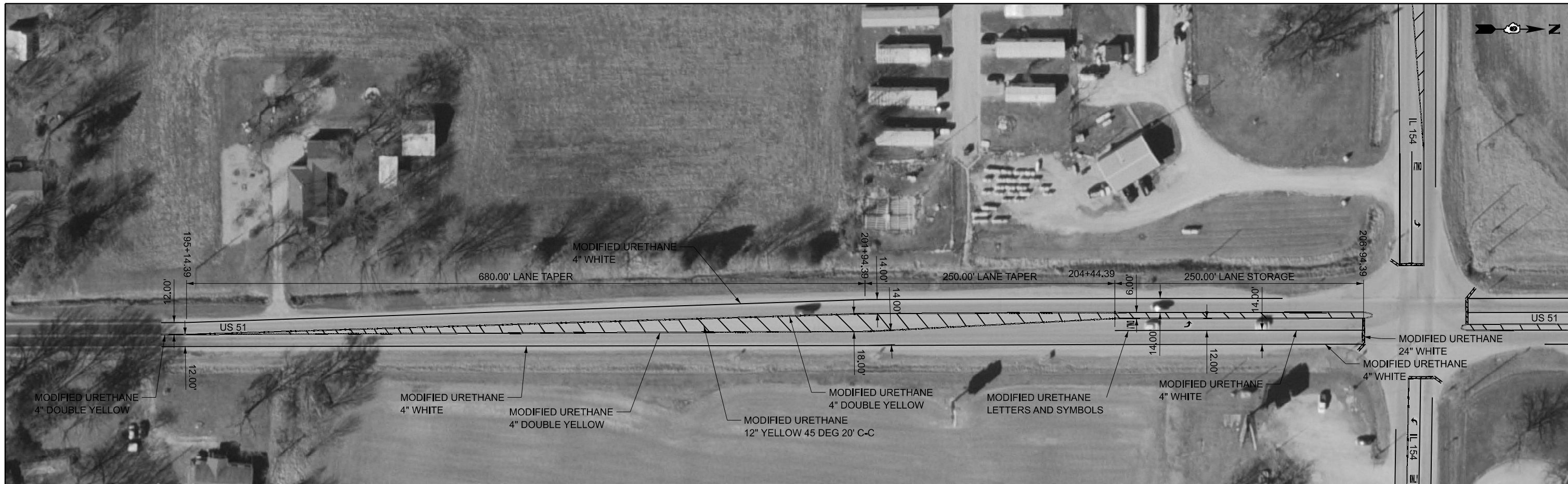
**STATE OF ILLINOIS  
 DEPARTMENT OF TRANSPORTATION**

**IL 154/US 51 PAVEMENT MARKING DETAIL**

SCALE: SHEET OF 48 SHEETS STA. TO STA.

F.A.P. RTE.	SECTION	COUNTY	TOTAL SHEETS	SHEET NO.
841	(108,34,35)RS-4,126RS-5	*	48	35
CONTRACT NO. 78A47				
ILLINOIS FED. AID PROJECT				

\*PERRY/FRANKLIN



MODEL: I:\US 51+2 (Sheet)  
 FILE NAME: c:\p\work\pav\road\pav\mxd\092622\0978A47-ShtRotated.dgn

USER NAME = Nathan.Taylor	DESIGNED -	REVISED -
PLOT SCALE = 0.16666833' / in.	DRAWN -	REVISED -
PLOT DATE = 12/13/2023	CHECKED -	REVISED -
	DATE -	REVISED -

DESIGNED -	REVISED -
DRAWN -	REVISED -
CHECKED -	REVISED -
DATE -	REVISED -

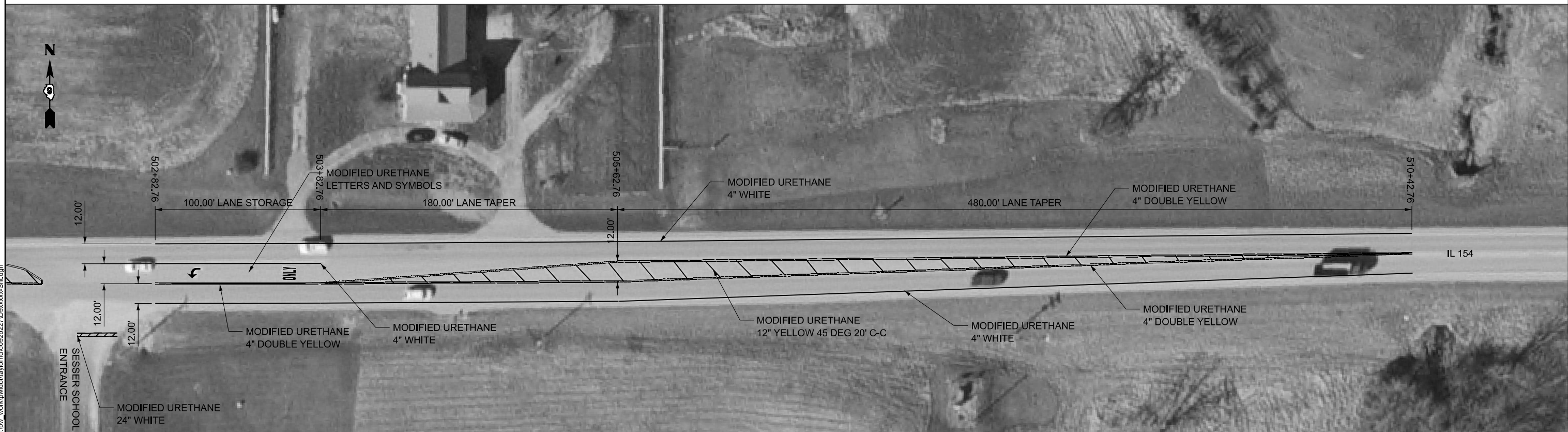
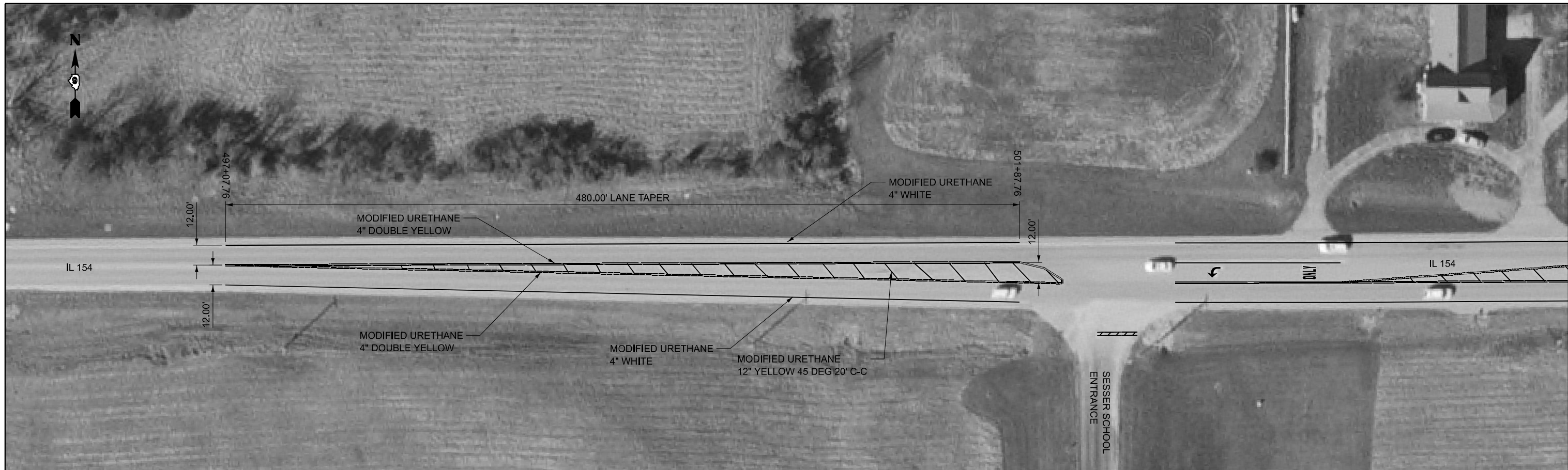
**STATE OF ILLINOIS**  
**DEPARTMENT OF TRANSPORTATION**

**US 51/IL 154 PAVEMENT MARKING DETAIL**

SCALE:      SHEET      OF 48 SHEETS      STA.      TO STA.

F.A.P. RTE.	SECTION	COUNTY	TOTAL SHEETS	SHEET NO.
841	(108,34,35)RS-4,126RS-5	*	48	36
CONTRACT NO. 78A47				
ILLINOIS FED. AID PROJECT				

\*PERRY/FRANKLIN



MODEL: SESSER SCHOOL\_1 [Sheet]  
 FILE NAME: c:\p\work\pav\154\154mod\0926227\09xxxxx-Sht.dgn

USER NAME = Nathan.Taylor	DESIGNED -	REVISED -
DRAWN -	REVISED -	
PLOT SCALE = 0.16666833' / in.	CHECKED -	REVISED -
PLOT DATE = 12/14/2023	DATE -	REVISED -

**STATE OF ILLINOIS  
 DEPARTMENT OF TRANSPORTATION**

**IL 154/SESSER SCHOOL  
 PAVEMENT MARKING DETAIL**

F.A.P. RTE.	SECTION	COUNTY	TOTAL SHEETS	SHEET NO.
841	(108,34.35)RS-4,126RS-5	*	48	37
CONTRACT NO. 78A47				
ILLINOIS FED. AID PROJECT				

SCALE: SHEET OF 48 SHEETS STA. TO STA.

\*PERRY/FRANKLIN



MODEL: IL\_148 (Sheet)  
 FILE NAME: c:\p\work\perryfranklin\mod\0926227D6xxxx-Sht.dgn

USER NAME = Nathan.Taylor	DESIGNED -	REVISED -
	DRAWN -	REVISED -
PLOT SCALE = 0.16666833' / in.	CHECKED -	REVISED -
PLOT DATE = 12/14/2023	DATE -	REVISED -

**STATE OF ILLINOIS**  
**DEPARTMENT OF TRANSPORTATION**

**IL 154/IL 148 PAVEMENT MARKING DETAIL**  
 SCALE: SHEET OF 48 SHEETS STA. TO STA.

F.A.P. RTE.	SECTION	COUNTY	TOTAL SHEETS	SHEET NO.
841	(108,34,35)RS-4,126RS-5	*	48	38
CONTRACT NO. 78A47				
ILLINOIS FED. AID PROJECT *PERRY/FRANKLIN				











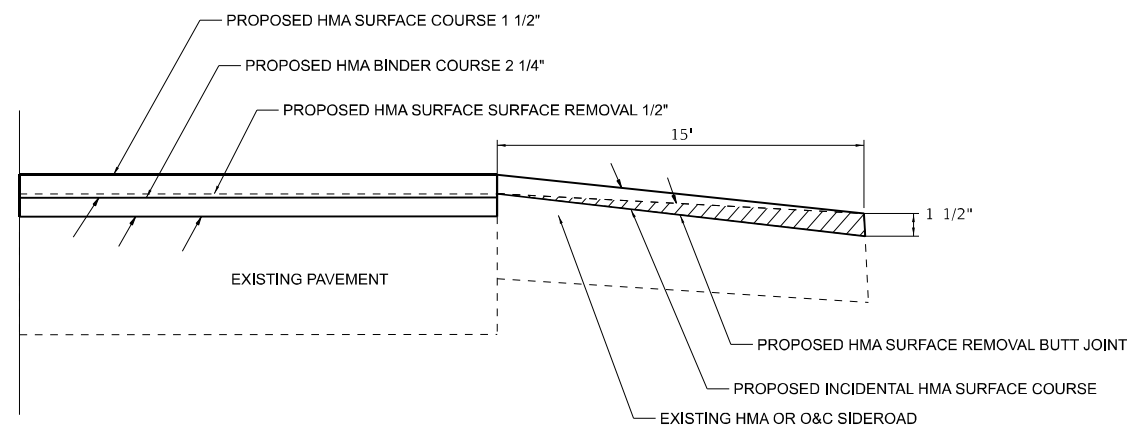




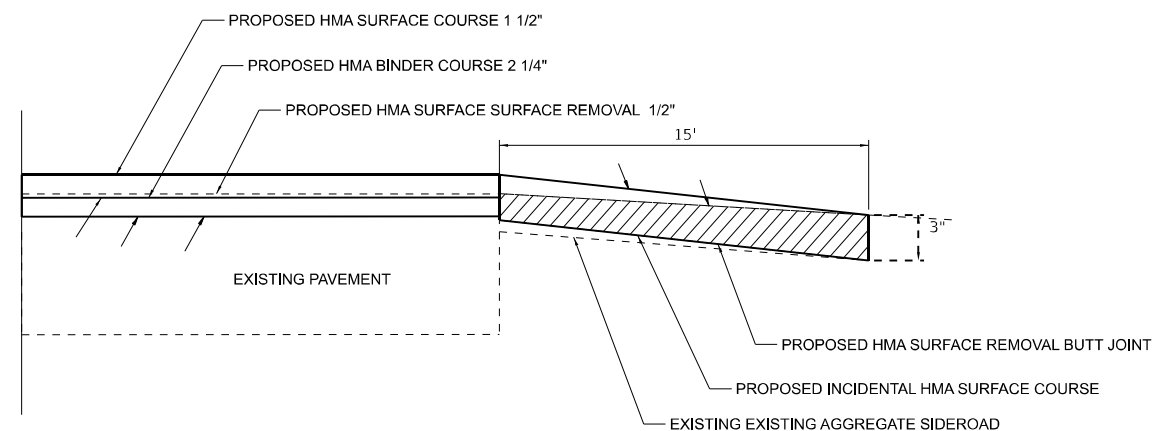


## IL 154 AND US 51 SIDEROAD AND ENTRANCE DETAILS

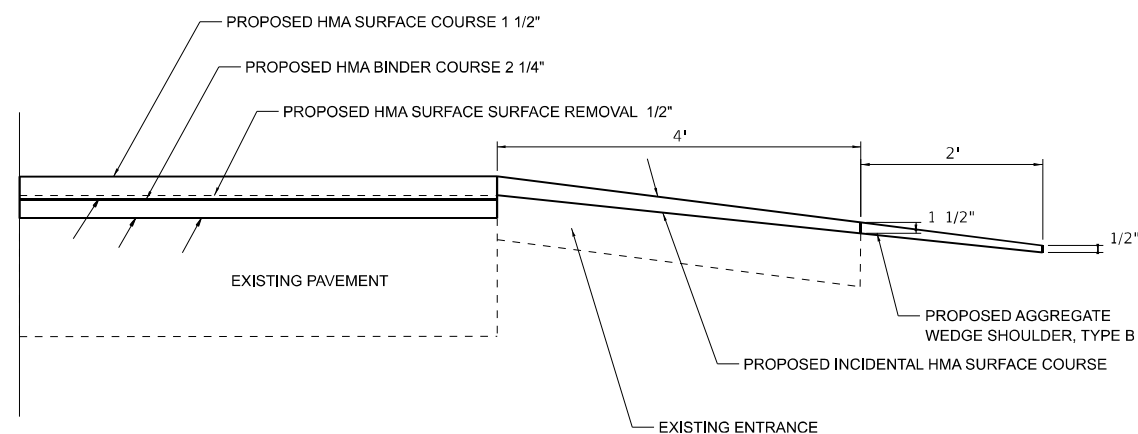
### HMA, PCC OR OIL & CHIP SIDEROADS WITH BUTT JOINT



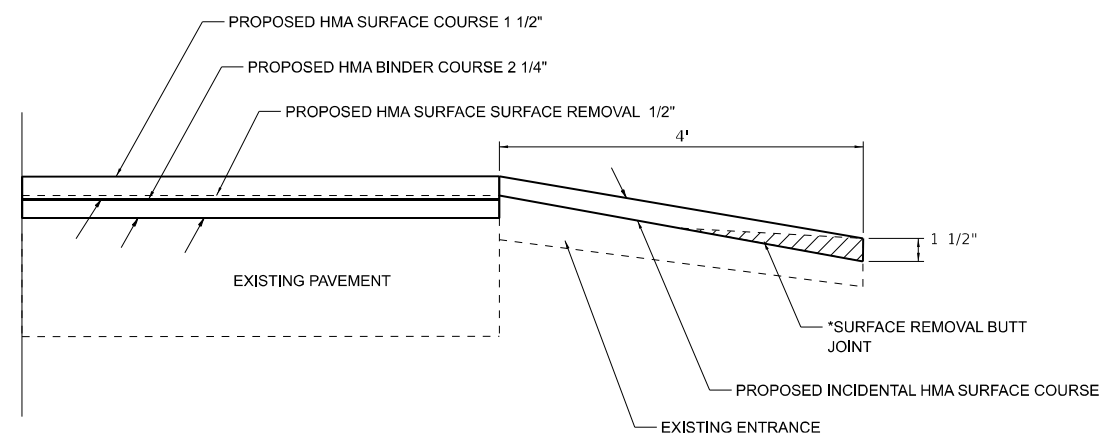
### AGGREGATE SIDEROADS



### AGGREGATE ENTRANCE



### BITUMINOUS OR PCC ENTRANCE



1. IF THE EXISTING SUBBASE IS INADEQUATE, AS DETERMINED BY THE ENGINEER, THE SIDE ROADS SHALL BE CORED OUT AND AGGREGATE SUBBASE, TYPE B SHALL BE PLACED FOR BASE. THE COST OF CORING OUT THE SIDEROAD AND ANY AGGREGATE BASE COURSE SHALL BE PAID FOR AS SPECIFIED IN ART. 109.04 OF THE STANDARD SPECIFICATIONS FOR ROAD AND BRIDGE CONSTRUCTION. IF EXISTING SUBBASE IS DETERMINED TO BE ADEQUATE, THE PREPARATION OF THE BASE SHALL BE CONSTRUCTED ACCORDING TO ARTICLE 406.09.
2. VARIABLE SHAPING IS INCLUDED IN THE COST OF INCIDENTAL HOT-MIX ASPHALT SURFACING.
3. \*SURFACE REMOVAL BUTT JOINT ON ENTRANCES IS INCLUDED IN THE COST OF INCIDENTAL HOT-MIX ASPHALT SURFACING EXCEPT COMMERCIAL ENTRANCES SHEETS 26-29.

MODEL: PAVEMENT DETAIL S-1 (Sheet)  
FILE NAME: c:\p\work\pav\detail\pav\mcd\0925227\09xxxx-SHS-DistrictStds.dgn

USER NAME = Nathan.Taylor	DESIGNED -	REVISED -
PLOT SCALE = 0.16666833' / in.	DRAWN -	REVISED -
PLOT DATE = 1/25/2024	CHECKED -	REVISED -
	DATE -	REVISED -

**STATE OF ILLINOIS  
DEPARTMENT OF TRANSPORTATION**

#### PAVEMENT DETAILS

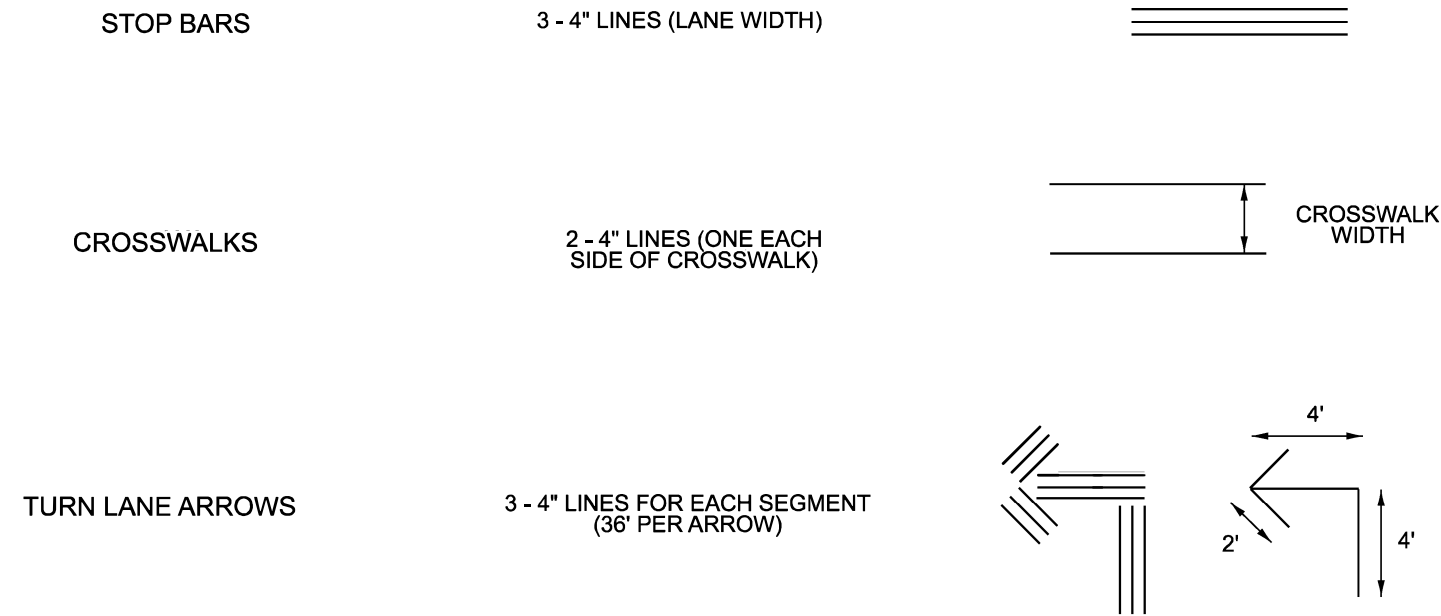
SCALE: SHEET OF 48 SHEETS STA. TO STA.

F.A.P. RTE.	SECTION	COUNTY	TOTAL SHEETS	SHEET NO.
841	(108,34,35)RS-4,126RS-5	*	48	46
CONTRACT NO. 78A47				

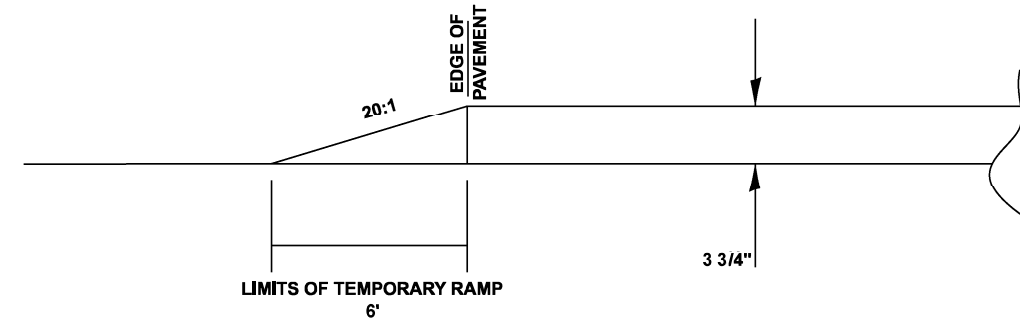
ILLINOIS FED. AID PROJECT

\*PERRY/FRANKLIN

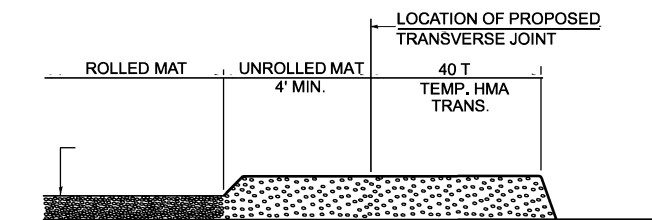
# SHORT TERM PAVEMENT MARKING DETAIL



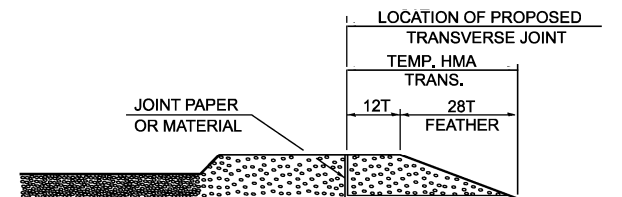
# TEMPORARY RAMPS FOR SIDEROADS DETAIL



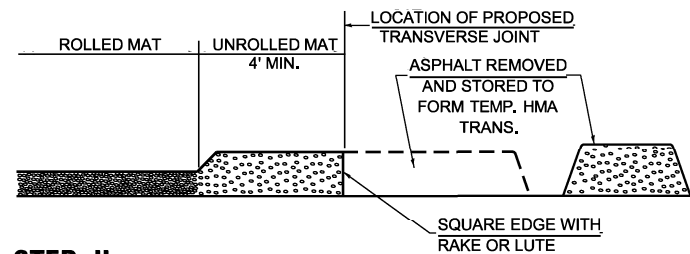
# TEMPORARY HOT-MIX ASPHALT TRANSITIONS



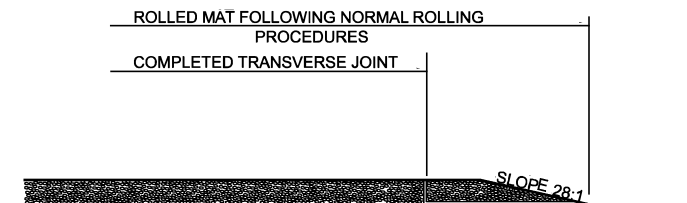
- STEP I**
1. PLACE HOT-MIX ASPHALT MAT, LENGTH 40 TIMES THE THICKNESS OF THE MAT BEING PLACED PAST THE PROPOSED TRANSVERSE JOINT LOCATION USING NORMAL OPERATING PROCEDURES.
  2. EXTREME CARE SHOULD BE TAKEN TO MAINTAIN ENOUGH MATERIAL IN FRONT OF THE SCREED TO MAINTAIN REQUIRED PAVING DEPTH.



- STEP III**
1. JOINT PAPER OR OTHER PRESELECTED JOINT MATERIAL IS THEN PLACED IN THE CLEARED AREA AND THE EXCESS ASPHALT USED TO HAND FORM A TRANSITION TO THE DIMENSIONS SHOWN ABOVE.
  2. NOTE THAT IN CONSTRUCTING THE TRANSITION, THE MAT DEPTH IS CONTINUED AS PART OF THE TRANSITION BEFORE FORMING THE FEATHER.



- STEP II**
1. MOVE THE PAVER OUT OF THE WAY AND REMOVE THE ASPHALT FROM THE AREA OF THE PROPOSED TEMPORARY HOT-MIX ASPHALT TRANSITION.
  2. SQUARE UP THE END OF THE MAT WITH A RAKE OR LUTE.
  3. NOTE THAT THE MAT WITHIN 4' OF THE END OF JOINT IS NOT TO BE ROLLED AT THIS TIME.



- STEP IV**
1. COMPLETE TEMPORARY TRANSITION BY ROLLING.
  2. TO RESUME PAVING, AT THE JOINT, REMOVE TEMPORARY TRANSITION AND DISPOSE OF THE MATERIAL ACCORDING TO ART. 202.03 OF THE STD. SPECS. (COST INCLUDED IN THE CONTRACT).
  3. CONSTRUCTING THE TEMPORARY TRANSITIONS WILL NOT BE PAID FOR SEPARATELY IN ACCORDANCE WITH ARTICLE 406.14 OF THE STANDARD SPECIFICATIONS.

DRAWN	02-15-89
REVISED	01-09-07
REVISED	10-21-21
REVISED	05-26-22

STD. 9-18

STATE OF ILLINOIS  
DEPARTMENT OF TRANSPORTATION

PAVEMENT DETAILS

SCALE: SHEET OF 48 SHEETS STA. TO STA.

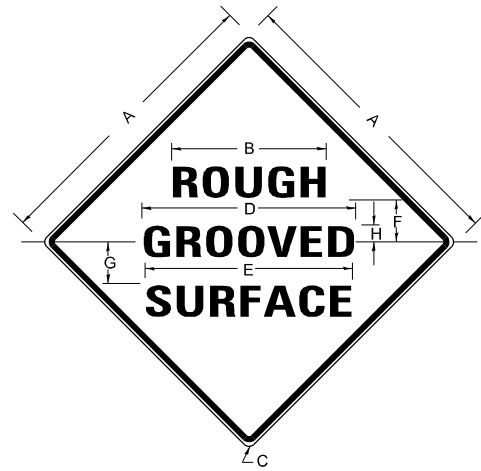
F.A.P. RTE.	SECTION	COUNTY	TOTAL SHEETS	SHEET NO.
841	(108,34,35)RS-4,126RS-5	*	48	47
CONTRACT NO. 78A47				

ILLINOIS FED. AID PROJECT

\*PERRY/FRANKLIN

MODEL: PAVEMENT DETAILS-2 (S heel)  
FILE NAME: c:\pw\_swork\pav\lay\ornd\0925221D8xxxx-S11S-DistrictStis.dgn

**ILLINOIS STANDARD  
ROUGH GROOVED SURFACE SIGN**



**COLORS**

LEGEND AND BORDER- BLACK NON-REFLECTORIZED  
BACKGROUND- ORANGE REFLECTORIZED

SIGN SIZE	DIMENSIONS							
	A	B	C	D	E	F	G	H
48X48	48.0	24.1	3.0	34.0	33.0	6.0	13.0	3.5

SIGN SIZE	SERIES LINES			MAR-GIN	BOR-DER	BLANK STD.
	1	2	3			
48X48	7C	7C	7C	0.8	1.2	B4-48D

ALL DIMENSIONS IN INCHES

**NOTES**

PRIOR TO ALLOWING TRAFFIC ON ANY PORTION OF THE ROADWAY THAT HAS BEEN COLDMILLED, THE CONTRACTOR SHALL HAVE ERECTED "ROUGH GROOVED SURFACE" SIGNS THAT CONFORM TO THE ABOVE DETAILS. A MINIMUM OF ONE SIGN AT EACH END OF THE IMPROVEMENT WILL BE REQUIRED. THE CONTRACTOR SHALL MAINTAIN THE "ROUGH GROOVED SURFACE" SIGNS UNTIL THE COLDMILLED SURFACE IS COVERED WITH LEVELING BINDER OR SURFACE COURSE.

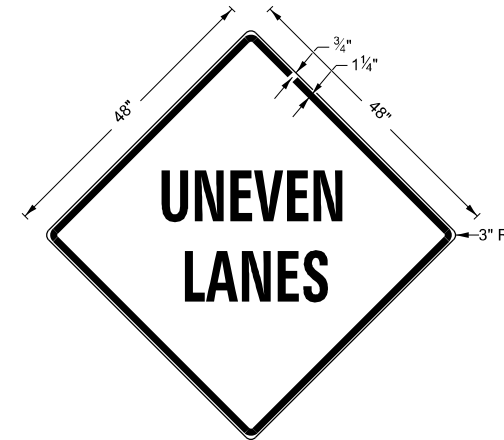
IF AT ANY TIME THE SIGNS ARE IN PLACE BUT NOT APPLICABLE, THEY SHALL BE TURNED FROM THE VIEW OF MOTORISTS OR COVERED AS DIRECTED BY THE ENGINEER.

THE COST OF FURNISHING, ERECTING, MAINTAINING, AND REMOVING THE REQUIRED SIGNS SHALL BE INCLUDED IN THE CONTRACT.

DRAWN	02-15-89
REVISED	03-27-08
REVISED	10-21-21
REVISED	05-27-22

STD. 9-23

**UNEVEN LANES SIGN  
W8-11 (48" X 48")**



**COLORS:**

LEGEND AND BORDER - BLACK NON-REFLECTORIZED  
BACKGROUND - ORANGE REFLECTORIZED

NOTE: PRIOR TO ALLOWING TRAFFIC ON ANY PORTION OF THE ROADWAY THAT HAS BEEN COLDMILLED OR BEFORE RESURFACING OPERATIONS BEGIN, THE CONTRACTOR SHALL HAVE ERECTED "UNEVEN PAVEMENT" SIGNS THAT CONFORM TO THE ABOVE DETAILS. A MINIMUM OF ONE SIGN AT EACH END OF THE IMPROVEMENT WILL BE REQUIRED. THE CONTRACTOR SHALL MAINTAIN THE "UNEVEN PAVEMENT" SIGNS UNTIL THE RESURFACING OPERATIONS ARE COMPLETED.

IF AT ANY TIME THE SIGNS ARE IN PLACE BUT NOT APPLICABLE, THEY SHALL BE TURNED FROM THE VIEW OF MOTORISTS OR COVERED AS DIRECTED BY THE ENGINEER.

THE COST OF FURNISHING, ERECTING, MAINTAINING, AND REMOVING THE REQUIRED SIGNS SHALL BE INCLUDED IN THE CONTRACT.

DRAWN	02-15-89
REVISED	05-08-08
REVISED	10-21-21
REVISED	05-27-22

STD. 9-24

MODEL: PAVEMENT DETAIL S-3 (Sheet)  
FILE NAME: c:\p\work\wrt\dist\lay\mcd\092622\09xxx-SHS-DistrictSIGs.dgn

USER NAME = Nathan.Taylor	DESIGNED -	REVISED -
	DRAWN -	REVISED -
PLOT SCALE = 0.16666833 / in.	CHECKED -	REVISED -
PLOT DATE = 12/14/2023	DATE -	REVISED -

**STATE OF ILLINOIS  
DEPARTMENT OF TRANSPORTATION**

**PAVEMENT DETAILS**

SCALE: SHEET OF 48 SHEETS STA. TO STA.

F.A.P RTE.	SECTION	COUNTY	TOTAL SHEETS	SHEET NO.
841	(108,34,35)RS-4,126RS-5	*	48	48
CONTRACT NO. 78A47				

ILLINOIS FED. AID PROJECT

\*PERRY/FRANKLIN