

**SUMMARY OF QUANTITIES**

ITEM NO.	ITEM	UNIT	TOTAL	CONSTRUCTION 0004	TRAINEES 0042	TRAFFIC SIGNALS 75% STATE/25% LOCAL	NON-PARTICIPATING 100% LOCAL
* 20100110	TREE REMOVAL (6 TO 15 UNITS DIAMETER)	UNIT					
* 20100210	TREE REMOVAL (OVER 15 UNITS DIAMETER)	UNIT					
20101000	TEMPORARY FENCE	FOOT	870	870			
20101100	TREE TRUNK PROTECTION	EACH	5	5			
* 20101200	TREE ROOT PRUNING	EACH	8	8			
* 20101300	TREE PRUNING (1 TO 10 INCH DIAMETER)	EACH	2	2			
* 20101350	TREE PRUNING (OVER 10 INCH DIAMETER)	EACH	6	6			
20101700	SUPPLEMENTAL WATERING	UNIT	22	22			
20200100	EARTH EXCAVATION	CU YD	18408	18408			
20201200	REMOVAL AND DISPOSAL OF UNSUITABLE MATERIAL	CU YD	3402	3402			
20800150	TRENCH BACKFILL	CU YD	9563	7013			2550
21001000	GEOTECHNICAL FABRIC FOR GROUND STABILIZATION	SQ YD	10847	10847			
21101505	TOPSOIL EXCAVATION AND PLACEMENT	CU YD	7299	7299			
21301084	EXPLORATION TRENCH 84" DEPTH	FOOT	200	200			
* 25000210	SEEDING, CLASS 2A	ACRE	5.75	5.75			
* 25000400	NITROGEN FERTILIZER NUTRIENT	POUND	518	518			
* 25000500	PHOSPHORUS FERTILIZER NUTRIENT	POUND	518	518			
* 25000600	POTASSIUM FERTILIZER NUTRIENT	POUND	518	518			
* 25100630	EROSION CONTROL BLANKET	SQ YD	23506	23506			

**\*SPECIALTY ITEMS**

REVISION NOTE: TREE REMOVAL TO BE COMPLETED BY VILLAGE OF SOUTH ELGIN PRIOR TO START OF CONTRACT.

MODEL: Default  
FILE NAME: P:\02\81180894\ca\highway 2\CADD\_Sheets\180894-sh-500.dgn

<b>HAMPTON, LENZINI AND RENWICK, INC.</b> 380 SHEPARD DRIVE ELGIN, ILLINOIS 60123 ILLINOIS PROFESSIONAL DESIGN FIRM LS / PE / SE CORP. 104.000999	USER NAME = knelms	DESIGNED - KN	REVISED - <sup>1</sup> ADDENDUM 1 - 2/22/24
	PLOT SCALE = 0.1667' / in.	DRAWN - SS	REVISED -
	PLOT DATE = 2/21/2024	CHECKED - NP	REVISED -
		DATE - 6/8/23	REVISED -

**STATE OF ILLINOIS  
DEPARTMENT OF TRANSPORTATION**

**SOUTH McLEAN BLVD - STEARNS RD TO SPRING ST  
SUMMARY OF QUANTITIES**

SCALE: SHEET OF SHEETS STA. TO STA.

F.A.U RTE.	SECTION	COUNTY	TOTAL SHEETS	SHEET NO.
2509	18-00050-00-PV	KANE	258	4
CONTRACT NO. 61J65				
		ILLINOIS	FED. AID PROJECT	

**SUMMARY OF QUANTITIES**

ITEM NO.	ITEM	UNIT	TOTAL	CONSTRUCTION 0004	TRAINEES 0042	TRAFFIC SIGNALS 75% STATE/25% LOCAL	NON-PARTICIPATING 100% LOCAL
* B0001716	TREE, AMELANCHIER X GRANDIFLORA APPLE, (APPLE SERVICEBERRY), 2" CALIPER, TREE FORM, BALLED AND BURLAPPED	EACH	20	20			
* B2006220	TREE, SYRINGA RETICULATA (JAPANESE TREE LILAC), 2-1/2" CALIPER, TREE FORM, BALLED AND BURLAPPED	EACH	21	21			
* E20200G1	VINE-PARTHENOCISSUS QUINQUEFOLIA (VIRGINIA CREEPER), 1-GALLON POT	EACH	963	963			
X0301423	NOISE ABATEMENT WALL, GROUND MOUNTED	SQ FT	49655	49655			
* X0324085	EMERGENCY VEHICLE PRIORITY SYSTEM LINE SENSOR CABLE, NO. 20 3/C	FOOT	292			292	
X0326806	WASHOUT BASIN	L SUM	1	1			
X0327036	BIKE PATH REMOVAL	SQ YD	464	464			
* X1200018	DUCTILE IRON WATER MAIN 6" RESTRAINED JOINT TYPE	FOOT	25				25
* X1200078	DUCTILE IRON WATER MAIN 12" RESTRAINED JOINT PIPE	FOOT	32				32
* X1400101	NETWORK CONFIGURATION	L SUM	1	1			
* X1400102	OUTDOOR RATED NETWORK CABLE	FOOT	126			126	
* X1400108	FULL-ACTUATED CONTROLLER AND TYPE SUPER R CABINET (SPECIAL)	EACH	1			1	
* X1400150	SERVICE INSTALLATION, GROUND MOUNTED, METERED	EACH	1			1	
* X1400367	PEDESTRIAN SIGNAL POST, 10 FT.	EACH	1			1	
* X1400378	PEDESTRIAN SIGNAL POST, 5 FT.	EACH	2			2	
* X2010310	TREE REMOVAL (SPECIAL)	UNIT					
X4021000	TEMPORARY ACCESS (PRIVATE ENTRANCE)	EACH	9	9			
X4023000	TEMPORARY ACCESS (ROAD)	EACH	2	2			

1

\*SPECIALTY ITEMS

REVISION NOTE: TREE REMOVAL TO BE COMPLETED BY VILLAGE OF SOUTH ELGIN PRIOR TO START OF CONTRACT.

MODEL: D:\dell\... FILE NAME: P:\03\81180894\ca\pgh\base 2\CADD\_Sheets\180894-sh-500.dgn

### SCHEDULE OF QUANTITIES

TREE SCHEDULE						
A2000086	TREE, ACER X FREEMANII ARMSTRONG (ARMSTRONG FREEMAN MAPLE), 2-1/2" CALIPER, BALLED AND BURLAPPED					
A2004420	TREE, GINKGO BILOBA (GINKGO), 2-1/2" CALIPER, BALLED AND BURLAPPED					
A2008748	TREE, ULMUS X FRONTIER (FRONTIER ELM), 3" CALIPER, BALLED AND BURLAPPED, MATCHING HEADS					
B0001716	TREE, AMELANCHIER X GRANDIFLORA APPLE, (APPLE SERVICEBERRY), 2" CALIPER, TREE FORM, BALLED AND BURLAPPED					
B2006220	TREE, SYRINGA RETICULATA (JAPANESE TREE LILAC), 2-1/2" CALIPER, TREE FORM, BALLED AND BURLAPPED					
LOCATION	A2000086	A2004420	A2008748	B0001716	B2006220	
STA	OFF	ARMSTRONG FREEMAN MAPLE (EACH)	GINKGO (MALE ONLY) (EACH)	FRONTIER ELM (EACH)	APPLE SERVICEBERRY (EACH)	JAPANESE TREE LILAC (EACH)
20+50	-62		1			
21+00	-64		1			
21+50	-64		1			
22+00	-66		1			
22+50	-64		1			
23+00	-64			1		
23+50	-57			1		
24+00	-57			1		
24+50	-57			1		
25+00	-57			1		
25+50	-57			1		
27+00	-55		1			
27+00	0				1	
27+50	-55		1			
27+50	0				1	
28+00	-55		1			
28+00	0				1	
28+50	-55		1			
28+50	0				1	
29+00	-55		1			
29+00	0				1	
29+50	-55			1		
29+50	0					1
30+00	-55			1		
30+00	0					1
30+50	-55			1		
30+50	0					1
31+00	-55			1		
31+00	0					1
31+50	-55			1		
31+50	0					1
32+00	-55		1			
32+00	0				1	
32+50	-55		1			
32+50	0				1	
33+00	-55		1			
33+00	0				1	
33+50	-55		1			
33+50	0				1	
34+00	-55		1			
34+00	0				1	
34+50	0					1
35+00	0					1
35+50	0					1
36+00	0					1
36+50	0					1
37+00	0					1
46+00	0				1	
46+50	0				1	
47+00	0				1	
47+50	0				1	
48+00	0				1	
48+50	0					1
49+00	0					1
49+50	0					1
50+00	0					1
50+50	0					1
51+00	0				1	
51+50	0				1	
52+00	0				1	
52+50	0				1	
53+00	0				1	
53+50	0					1
54+00	0					1
54+50	0					1
55+00	0					1
55+50	0					1
57+86	-52	1				
58+36	-52	1				

TREE SCHEDULE						
A2000086	TREE, ACER X FREEMANII ARMSTRONG (ARMSTRONG FREEMAN MAPLE), 2-1/2" CALIPER, BALLED AND BURLAPPED					
A2004420	TREE, GINKGO BILOBA (GINKGO), 2-1/2" CALIPER, BALLED AND BURLAPPED					
A2008748	TREE, ULMUS X FRONTIER (FRONTIER ELM), 3" CALIPER, BALLED AND BURLAPPED, MATCHING HEADS					
B0001716	TREE, AMELANCHIER X GRANDIFLORA APPLE, (APPLE SERVICEBERRY), 2" CALIPER, TREE FORM, BALLED AND BURLAPPED					
B2006220	TREE, SYRINGA RETICULATA (JAPANESE TREE LILAC), 2-1/2" CALIPER, TREE FORM, BALLED AND BURLAPPED					
LOCATION	A2000086	A2004420	A2008748	B0001716	B2006220	
STA	OFF	ARMSTRONG FREEMAN MAPLE (EACH)	GINKGO (MALE ONLY) (EACH)	FRONTIER ELM (EACH)	APPLE SERVICEBERRY (EACH)	JAPANESE TREE LILAC (EACH)
59+30	-52	1				
59+80	-52	1				
60+30	-52	1				
60+80	-52			1		
61+44	-48			1		
62+03	-46			1		
62+70	-46			1		
63+20	-46			1		
64+50	-46	1				
64+98	-46	1				
65+45	-46	1				
TOTALS		8	15	16	20	21

TREE REMOVAL SCHEDULE						
X2010310	TREE REMOVAL (SPECIAL)					
20100110	TREE REMOVAL (6 TO 15 UNITS DIAMETER)					
20100210	TREE REMOVAL (OVER 15 UNITS DIAMETER)					
STA	OFFSET	X2010310 3 TO UNDER 6 UNITS DIAMETER (UNIT)	20100110 6 TO 15 UNITS DIAMETER (UNIT)	20100210 OVER 15 UNITS DIAMETER (UNIT)		
15+44	74 RT		8			
15+69	73 RT		7			
15+84	73 RT		7,7			
15+93	73 RT		7,6			
16+08	73 RT		8			
16+24	71 RT		13			
27+27	30 RT		11			
30+07	34 RT		11			
33+07	43 RT		14			
36+13	43 RT		12			
37+63	42 RT	4,5	6,6,7,7			
40+64	46 RT	5	6,6,8			
49+48	31 LT			27		
49+50	29 LT			29		
49+53	30 LT		15			
49+54	28 LT			27		
49+55	28 LT			21		
51+34	58 RT	5,5,5,5,5				
51+50	58 RT		8			
51+67	58 RT		7			
51+82	58 RT		6,6,6,6			
52+92	57 RT		13			
53+08	57 RT		11			
53+23	57 RT		9			
53+38	57 RT			16		
57+54	37 LT			17		
57+55	58 LT			17		
57+56	47 LT		11			
57+78	37 LT		12			
57+88	47 LT		8,8,9			
57+93	39 LT			16		
58+05	39 LT		13			
58+18	39 LT		13			
58+31	39 LT			17		
58+43	38 LT			17		
58+69	39 LT			19		
58+82	39 LT			17		
59+00	38 LT		11			
60+06	42 LT	5	6			
60+17	41 LT		9			
60+35	38 LT		7			
60+37	38 LT		13			
60+45	46 LT			16		
60+78	46 LT			22		
61+14	37 LT			18		
62+17	50 LT	3,3,4,4,4	6			
62+93	54 LT		9			
63+00	34 LT	5				
63+69	56 LT	3,3,5,5	7			

TREE REMOVAL SCHEDULE						
X2010310	TREE REMOVAL (SPECIAL)					
20100110	TREE REMOVAL (6 TO 15 UNITS DIAMETER)					
20100210	TREE REMOVAL (OVER 15 UNITS DIAMETER)					
STA	OFFSET	X2010310 3 TO UNDER 6 UNITS DIAMETER (UNIT)	20100110 6 TO 15 UNITS DIAMETER (UNIT)	20100210 OVER 15 UNITS DIAMETER (UNIT)		
63+84	50 LT	5				
64+63	36 LT		12			
64+67	38 LT		12,9			
65+00	38 LT	5	12			
65+12	43 LT		12,7			
65+82	40 LT			23		
TOTALS		93	450	319		

REVISION NOTE: TREE REMOVAL TO BE COMPLETED BY VILLAGE OF SOUTH ELGIN PRIOR TO START OF CONTRACT.

MODEL: Default  
FILE NAME: P:\2023\18180894\cad\phases 2\CADD\_Sheets\180894-ent-schedule.dgn

<b>HAMPTON, LENZINI AND RENWICK, INC.</b> 890 SHEPARD DRIVE ELGIN, ILLINOIS 60123 ILLINOIS PROFESSIONAL DESIGN FIRM LS / PE / SE CORP. 184.000999	USER NAME = knefms	DESIGNED - KN	REVISED -  ADDENDUM 1 - 2/22/24
	PLOT SCALE = 0.1667" / in.	DRAWN - SS	REVISED -
	PLOT DATE = 2/21/2024	CHECKED - NP	REVISED -
		DATE - 6/8/23	REVISED -

STATE OF ILLINOIS  
DEPARTMENT OF TRANSPORTATION

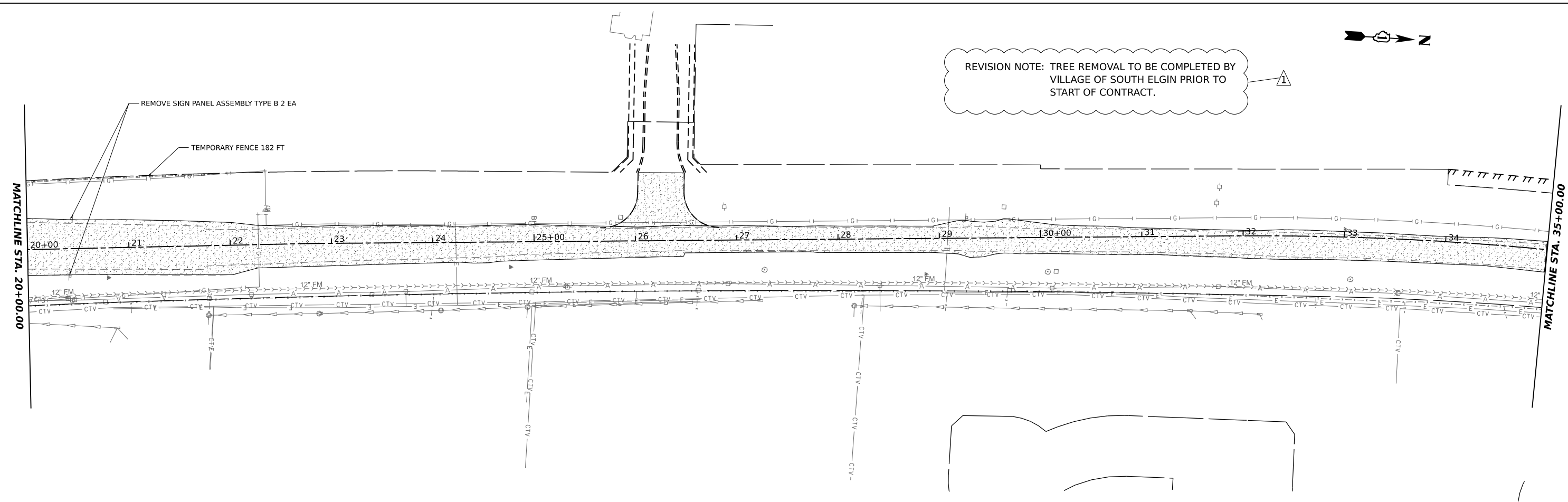
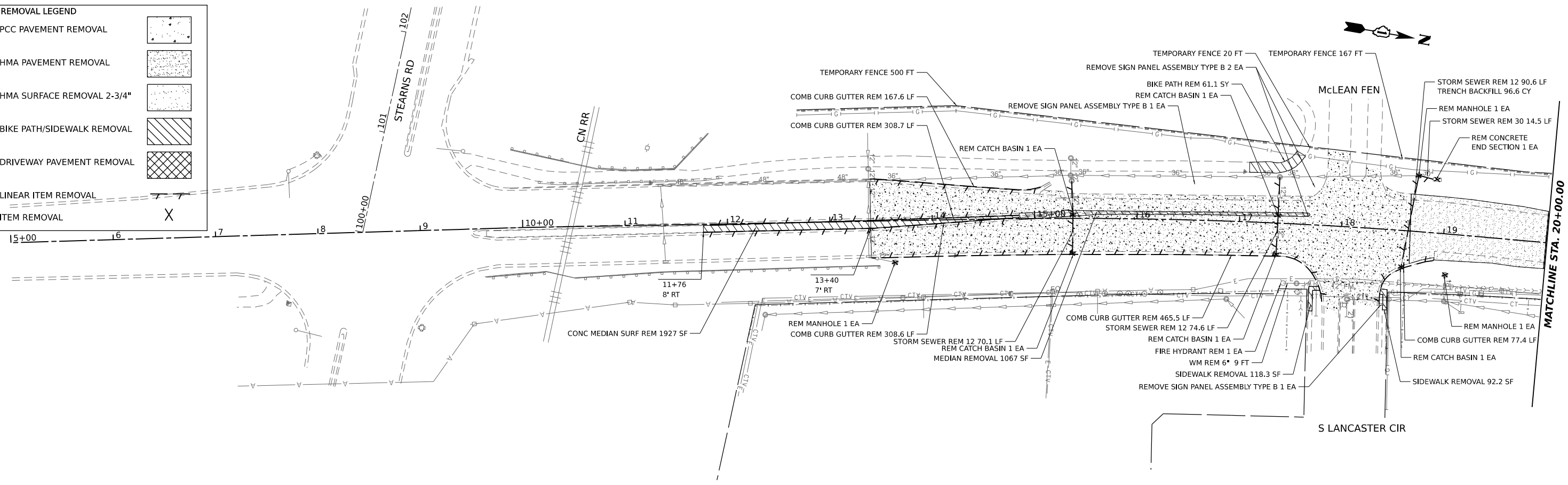
SOUTH McLEAN BLVD - STEARNS RD TO SPRING ST  
SCHEDULE OF QUANTITIES

SCALE: SHEET OF SHEETS STA. TO STA.

F.A.U. RTE.	SECTION	COUNTY	TOTAL SHEETS	SHEET NO.
2509	18-00050-00-PV	KANE	258	22
CONTRACT NO. 61J65				
ILLINOIS FED. AID PROJECT				

**REMOVAL LEGEND**

PCC PAVEMENT REMOVAL	
HMA PAVEMENT REMOVAL	
HMA SURFACE REMOVAL 2-3/4"	
BIKE PATH/SIDEWALK REMOVAL	
DRIVEWAY PAVEMENT REMOVAL	
LINEAR ITEM REMOVAL	
ITEM REMOVAL	



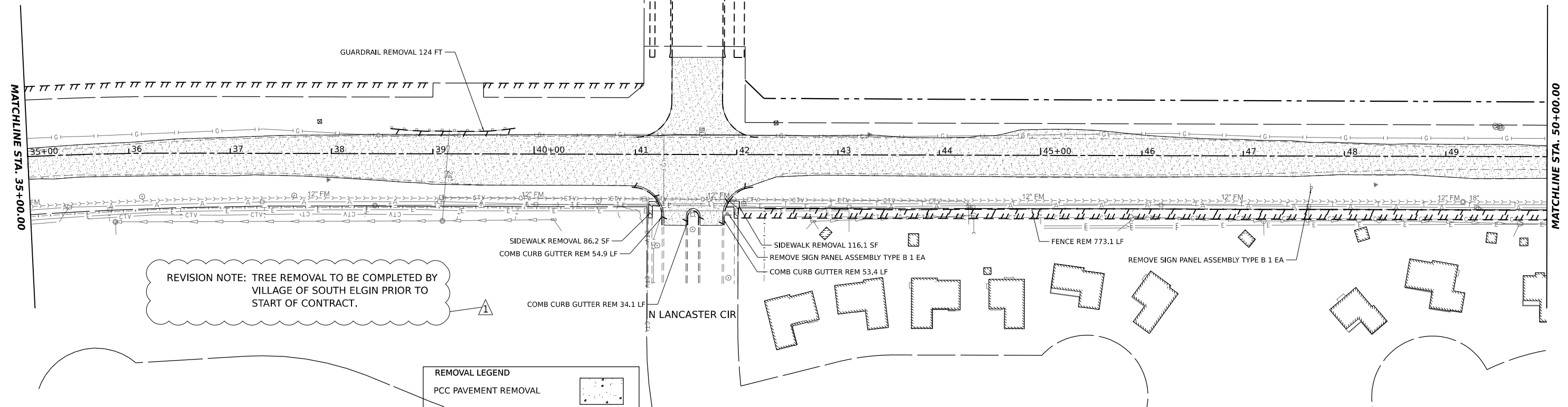
MODEL: McLean - Removal.dwg  
 FILE NAME: P:\2023\180894\2\CADD\_Sheets\180894-Str-Removal.dwg  
 HLR  
 390 SHEPARD DRIVE  
 ELGIN, ILLINOIS 60123  
 ILLINOIS PROFESSIONAL DESIGN FIRM  
 LS / PE / SE CORP. 194.000959

<b>HAMPTON, LENZINI AND RENWICK, INC.</b> <small>390 SHEPARD DRIVE          ELGIN, ILLINOIS 60123          ILLINOIS PROFESSIONAL DESIGN FIRM          LS / PE / SE CORP. 194.000959</small>	USER NAME = knelms	DESIGNED - KN	REVISED - $\Delta$ ADDENDUM 1 - 2/22/24
	PLOT SCALE = 0.16666667 1/16"	DRAWN - SS	REVISED -
	PLOT DATE = 2/21/2024	CHECKED - NP	REVISED -
		DATE - 6/8/23	REVISED -

**STATE OF ILLINOIS  
 DEPARTMENT OF TRANSPORTATION**

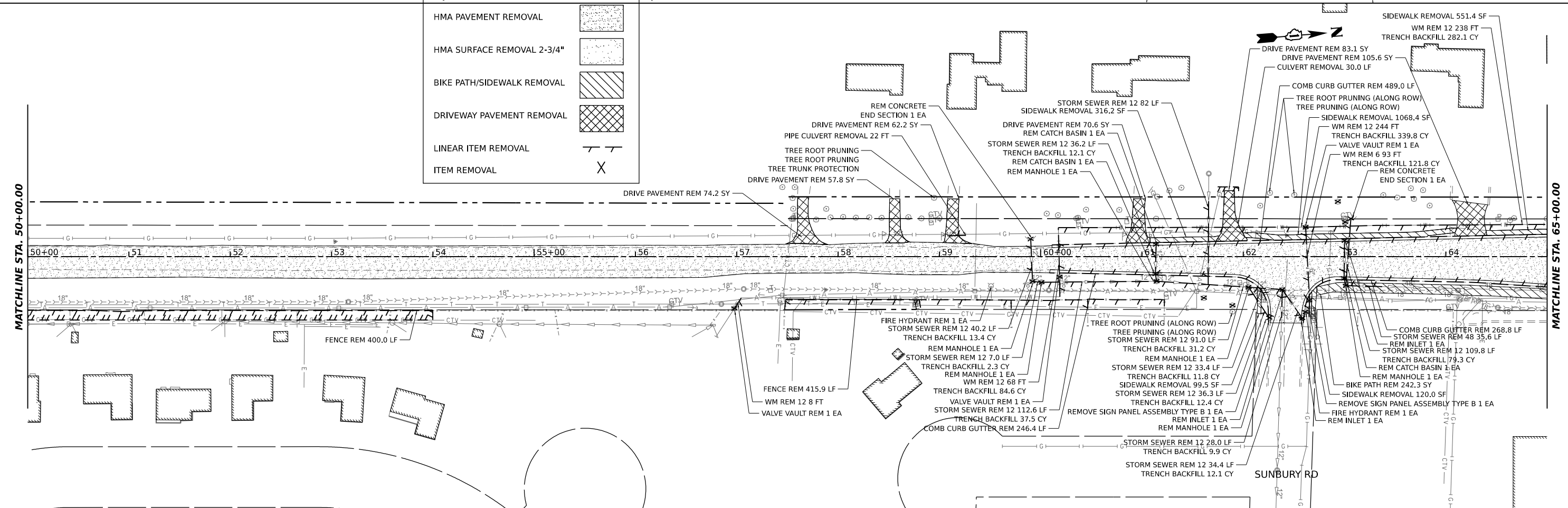
<b>SOUTH McLEAN BLVD - STEARNS RD TO SPRING ST          REMOVAL PLAN</b>			
SCALE: 1"=50'	SHEET	OF SHEETS	STA. 5+00 TO STA. 35+00

F.A.U. RTE.	SECTION	COUNTY	TOTAL SHEETS	SHEET NO.
2509	18-00050-00-PV	KANE	258	33
CONTRACT NO. 61J65				
ILLINOIS FED. AID PROJECT				



**REMOVAL LEGEND**

PCC PAVEMENT REMOVAL	
HMA PAVEMENT REMOVAL	
HMA SURFACE REMOVAL 2-3/4"	
BIKE PATH/SIDEWALK REMOVAL	
DRIVEWAY PAVEMENT REMOVAL	
LINEAR ITEM REMOVAL	
ITEM REMOVAL	



MODEL: McLean - Renwick.dwg  
FILE NAME: P:\2023\180894\3d\figure 2\CADD\_Sheets\180894-shr-removal.dwg

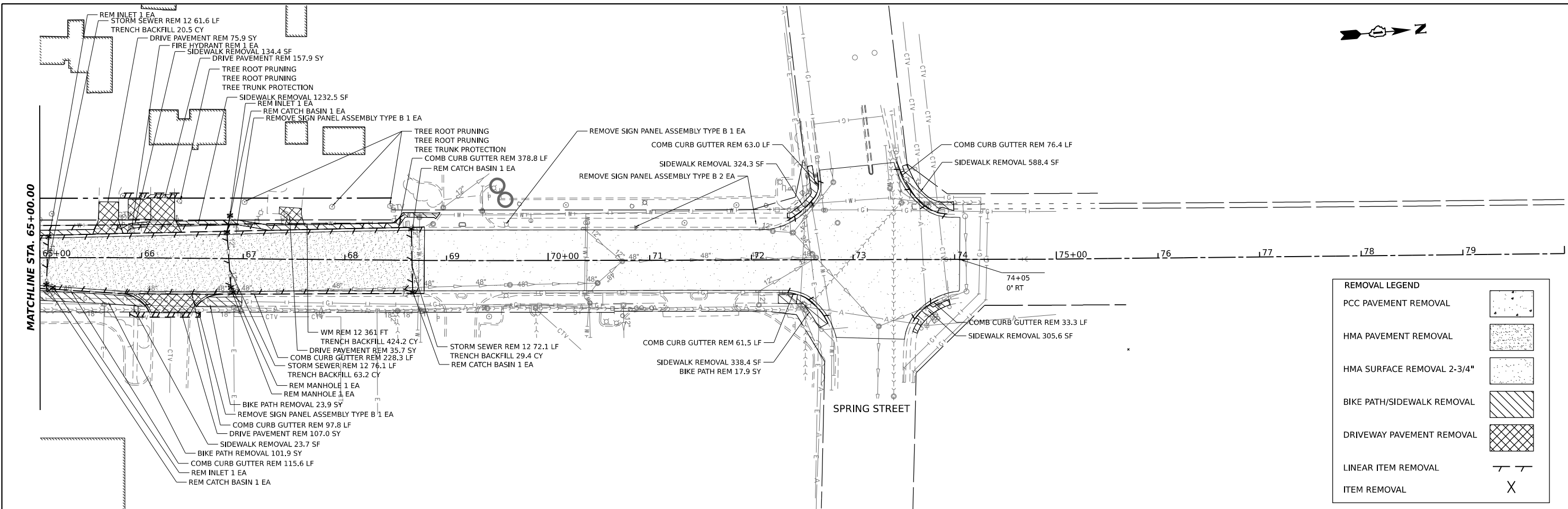
 <b>HAMPTON, LENZINI AND RENWICK, INC.</b> 880 SHEPARD DRIVE ELGIN, ILLINOIS 60123 ILLINOIS PROFESSIONAL DESIGN FIRM L.S. / P.E. / S.E. CORP. 184.000959	USER NAME = knelms	DESIGNED - KN	REVISED - ADDENDUM 1 - 2/22/24
	PLOT SCALE = 0.16666667 1/16"	DRAWN - SS	REVISED -
	PLOT DATE = 2/21/2024	CHECKED - NP	REVISED -
		DATE - 6/8/23	REVISED -

**STATE OF ILLINOIS  
DEPARTMENT OF TRANSPORTATION**

**SOUTH McLEAN BLVD - STEARNS RD TO SPRING ST  
REMOVAL PLAN**

SCALE: 1"=50' SHEET OF SHEETS STA. 35+00 TO STA. 65+00

F.A.U. RTE.	SECTION	COUNTY	TOTAL SHEETS	SHEET NO.
2509	18-00050-00-PV	KANE	258	34
CONTRACT NO. 61J65				
ILLINOIS FED. AID PROJECT				



REMOVAL LEGEND	
PCC PAVEMENT REMOVAL	
HMA PAVEMENT REMOVAL	
HMA SURFACE REMOVAL 2-3/4"	
BIKE PATH/SIDEWALK REMOVAL	
DRIVEWAY PAVEMENT REMOVAL	
LINEAR ITEM REMOVAL	
ITEM REMOVAL	

REVISION NOTE: TREE REMOVAL TO BE COMPLETED BY VILLAGE OF SOUTH ELGIN PRIOR TO START OF CONTRACT.

MODEL: McLean - Removal.dwg  
 FILE NAME: P:\2018\180050-00\180050-00.dwg  
 PROJECT: 18-00050-00-PV  
 SHEET: 35 OF 258

<b>HAMPTON, LENZINI AND RENWICK, INC.</b> 590 SHEPARD DRIVE ELGIN, ILLINOIS 60123 ILLINOIS PROFESSIONAL DESIGN FIRM LS / PE / SE CORP. 194.000959	USER NAME = knelms	DESIGNED - KN	REVISED -  ADDENDUM 1 - 2/22/24
	PLOT SCALE = 0.16666667 1/16"	DRAWN - SS	REVISED -
	PLOT DATE = 2/21/2024	CHECKED - NP	REVISED -
		DATE - 6/8/23	REVISED -

**STATE OF ILLINOIS**  
**DEPARTMENT OF TRANSPORTATION**

<b>SOUTH McLEAN BLVD - STEARNS RD TO SPRING ST</b> <b>REMOVAL PLAN</b>			
SCALE: 1"=50'	SHEET	OF	SHEETS
STA. 65+00	TO STA.	73+50	

F.A.U. RTE.	SECTION	COUNTY	TOTAL SHEETS	SHEET NO.
2509	18-00050-00-PV	KANE	258	35
CONTRACT NO. 61J65				
ILLINOIS FED. AID PROJECT				