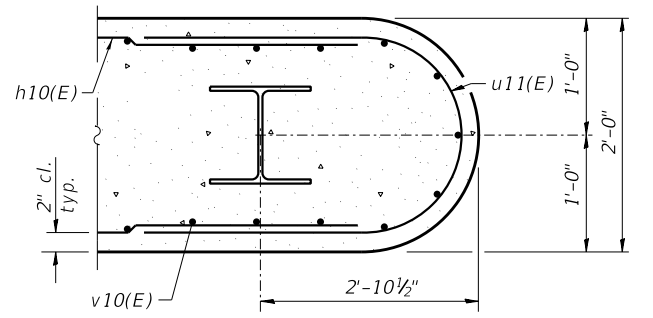
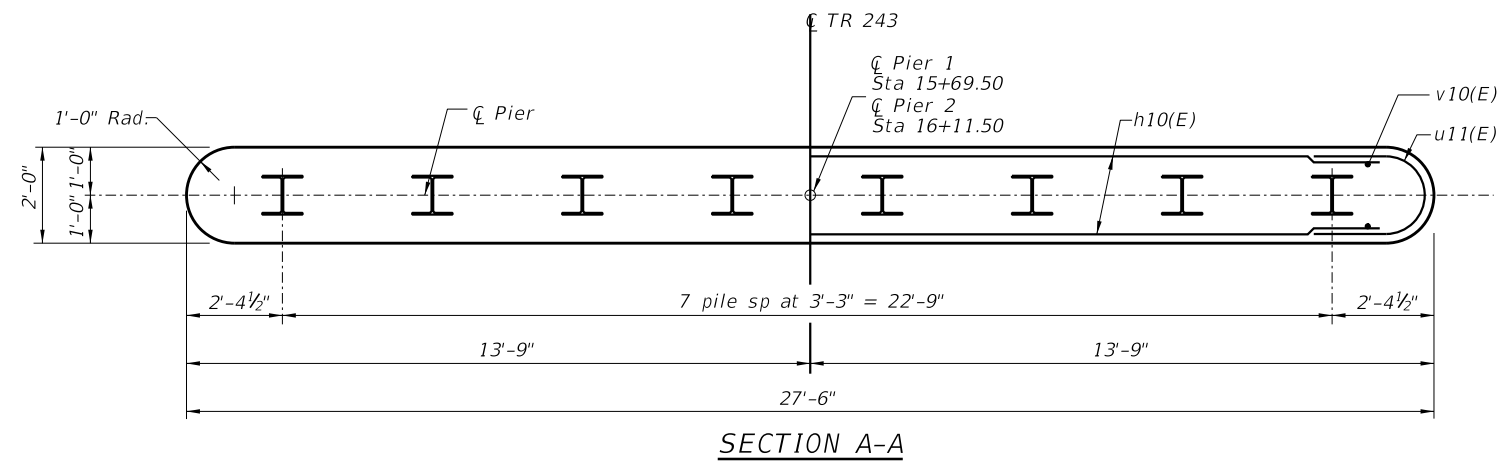


BILL OF MATERIAL (2 PIERS)

Bar	No.	Size	Length	Shape
h10(E)	52	#5	25'-0"	—
p10(E)	20	#7	27'-8"	—
s10(E)	54	#4	10'-5"	□
u10(E)	16	#6	9'-9"	U
u11(E)	52	#5	9'-2"	U
v10(E)	116	#5	13'-6"	—
Concrete Structures		Cu. Yd.	66.4	
Reinforcement Bars, Epoxy Coated		Pound	5230	
Furnishing Steel Piles HP10x42		Foot	441	
Driving Piles		Each	441	
Structure Excavation		Cu. Yd.	88	
Pile Shoes		Each	16	
Test Piles		Each	2	

Notes:
For details of piles, see sheet 9 of 11.
Space reinforcement in pier cap to miss beam anchor dowels.

PILE DATA:
Type: HP10x42
Nominal Required Bearing: 238 k
Factored Resistance Available: 131 k
Est. Length: 29' (W) 34' (E)
No. Production Piles: 14
No. Test Piles: 2



FILE NAME = I:\Municipalities\Vermon County_IL\B122 VCHD TR 243 Bridge Rep\CADD\CADD.Structural\Pier-revised.dgn



USER NAME = rking
PLOT TIME = 9:39:31 AM
PLOT SCALE = 4.0000' / 1"
PLOT DATE = 2/14/2024

DESIGNED KEB
DRAWN RLK
CHECKED BCG
DATE 11/1/2021

REVISED - 2-14-24
REVISED -
REVISED -
REVISED -

STATE OF ILLINOIS
VERMILION COUNTY HIGHWAY DEPARTMENT

PIER DETAILS
STRUCTURE NO. 092-3542
SHEET NO. 15 OF 22 SHEETS

FAS RTE	SECTION	COUNTY	TOTAL SHEETS	SHEET NO.
TR 243	18-14144-00-BR	VERMILION	22	15
	STRUCTURE NO. 092-3542	CONTRACT NO.	91618	

ILLINOIS FED. AID PROJECT