

COUNTY	ROUTE	SECTION	SHT. NO.
ADAMS	FAS 1588	21-00062-06-FP	1

COVER SHEET
TOTAL NO. SHEETS - 13

INDEX OF SHEETS

03-08-2024 LETTING ITEM 157

- SHEET NO. SHEET**
- 1 COVER SHEET
 - 2 SUMMARY OF QUANTITIES
SCHEDULE OF QUANTITIES
 - 3 TYPICAL SECTIONS
 - 4 GENERAL NOTES
TRAFFIC CONTROL & PROTECTION
HMA MIXTURE REQUIREMENTS
APPLICATION RATES
 - 5-6 PLAN SHEET - RESURFACING
 - 7 PAVEMENT MARKINGS
 - 8 HMA ENTRANCE RESURFACING
 - 9 HMA MAILBOX TURNOUTS
 - 10 BUTT JOINT - FEATHER EDGE DETAILS
 - 11-13 CROSS SECTIONS - ROADWAY

STANDARDS

- STANDARD 442201-03
- STANDARD 701011-04
- STANDARD 701201-05
- STANDARD 701301-04
- STANDARD 701306-04
- STANDARD 701311-03
- STANDARD 701901-09
- STANDARD 780001-05

THE PROPOSED IMPROVEMENT CONSISTS OF HMA SURFACE REMOVAL, COLD IN-PLACE RECYCLING AND RESURFACING OF THE ROADWAY WITH 2" POLYMERIZED HMA SURFACE COURSE, AGGREGATE SHOULDERS, INCIDENTAL SURFACING, PAVEMENT MARKINGS, AND OTHER ANCILLARY WORK.

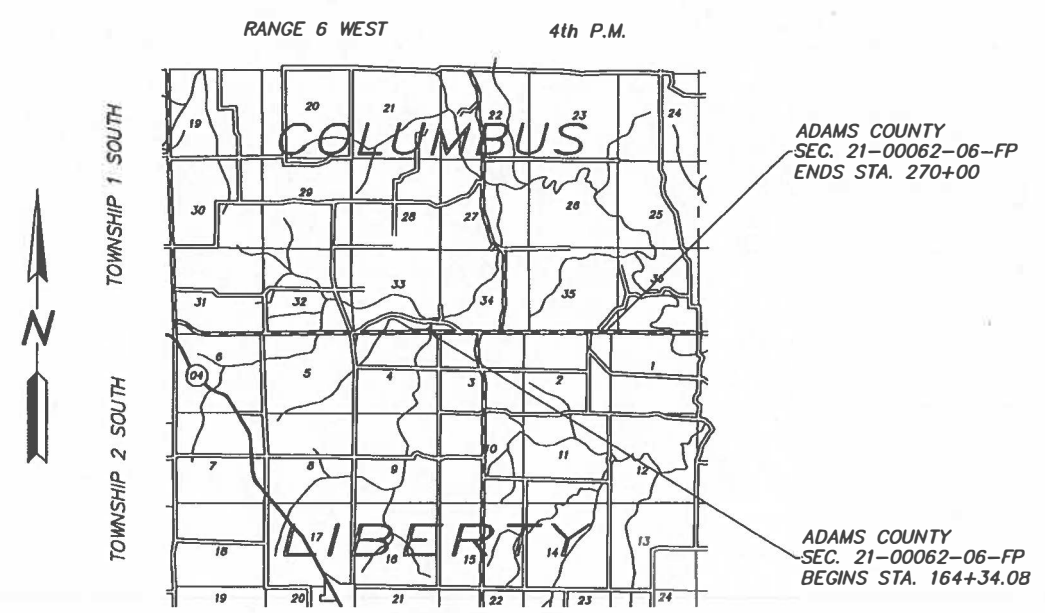
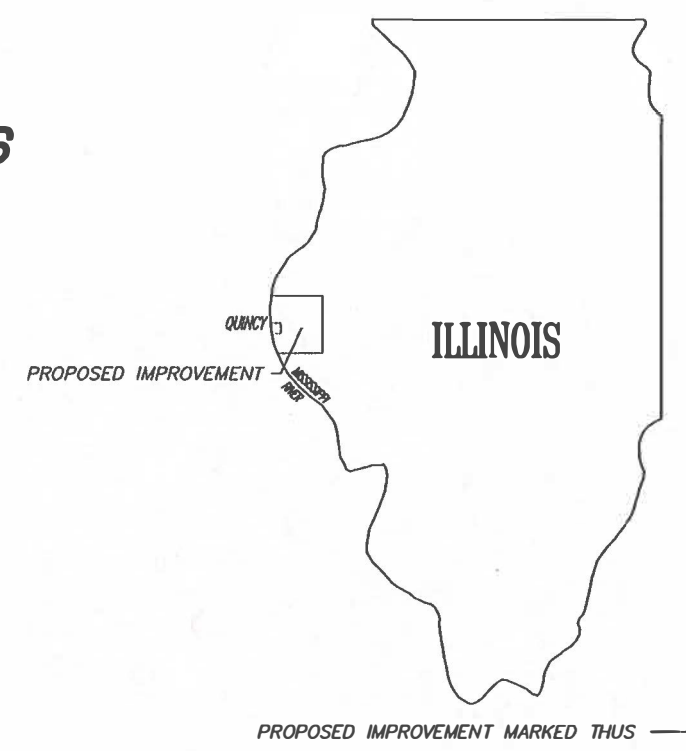
PLAN SHEETS	
PLAN SHEETS	
PROFILE HORZ.	
PROFILE VERT.	
CROSS SECTIONS	

FULL SIZE PLANS HAVE BEEN PREPARED USING STANDARD ENGINEERING SCALES, REDUCED SIZED PLANS WILL NOT CONFORM TO STANDARD SCALES, IN MAKING MEASUREMENTS ON REDUCED PLANS, THE ABOVE SCALES MAY BE USED.

UTILITIES:

- JLLLE 1-800-892-0123
- AT&T SPRINGFIELD, IL
- ABS WATER COOP CLAYTON, IL
- AMEREN ILLINOIS QUINCY, IL
- ADAMS TELESYS GOLDEN, IL
- ADAMS ELECTRIC COOP CAMP POINT, IL
- LEVEL 3 (CENTURY LINK)..... GALESBURG, IL

STATE OF ILLINOIS
DEPARTMENT OF TRANSPORTATION
DIVISION OF HIGHWAYS
PLANS FOR PROPOSED
SURFACE TRANSPORTATION / RURAL PROGRAM FUNDS
ADAMS COUNTY SEC. 21-00062-06-FP
FAS ROUTE 1588 (NORTH 1200th AVE.)
PROJECT NO. 8U97(633)
JOB NO. C-96-001-25



LOCATION MAP



DESIGN DESIGNATION:
MAJOR COLLECTOR
ADT: 1300 (IDOT 2019)
DESIGN SPEED - 55 M.P.H.

SUMMARY OF LENGTH:

GROSS LENGTH:
FAS 1588 - STA. 164+34.08 TO STA. 270+00
NET LENGTH TO BE IMPROVED = 10,565.92 FT. = 2.001 MILES

THESE PLANS WERE PREPARED BY ME OR A FULL TIME MEMBER OF MY STAFF WORKING UNDER MY PERSONAL SUPERVISION.

SUBMITTED BY DATE 12/18/23
 COUNTY ENGINEER
 LICENSE NO. 062-044792
 LIC. EXPIRES 11/30/2025



APPROVED Dec 18, 2023

 COUNTY ENGINEER

PASSED Dec 27, 2023

 DISTRICT ENGINEER OF LOCAL ROADS AND STREETS

RELEASING FOR BID BASED ON LIMITED REVIEW Dec 27, 2023

 REGION FOUR ENGINEER

STATE OF ILLINOIS
DEPARTMENT OF TRANSPORTATION

PREPARED BY
 ADAMS COUNTY HIGHWAY DEPARTMENT
 101 NORTH 54th STREET, QUINCY, ILLINOIS

SUMMARY OF QUANTITIES

PAVEMENT SCHEDULE

LOCATION / STA. - STA.	BITUMINOUS MATERIALS (TACK COAT)	POLYMERIZED HOT-MIX ASPHALT SURFACE COURSE, IL-9.5, MIX "C", N50	AGGREGATE SHOULDERS, TYPE B	COLD IN-PLACE RECYCLE 5"	CIR-FDR EMULSIFIED ASPHALT	SURFACE PROFILE MILLING
	POUND	TON	TON	SQ YD	TON	SQ YD
STA. 164+34.08 - 270+00	11,730	3,010	3,600	26,036	179	26,036
TOTAL	11,730	3,010	3,600	26,036	179	26,036

HMA SURFACE REMOVAL

LOCATION / STA. - STA.	HOT-MIX ASPHALT SURFACE REMOVAL - BUTT JOINT	TEMPORARY RAMP
	SQ. YD.	SQ. YD.
STA. 164+45.21 - 165+45.21	245	20
STA. 193+03 CH 11 RT	120	12
STA. 206+67 CH 11 LT	129	12
STA. 269+00 - 270+00	245	20
TOTAL	739	64

CLASS D PATCHES, 6 INCH

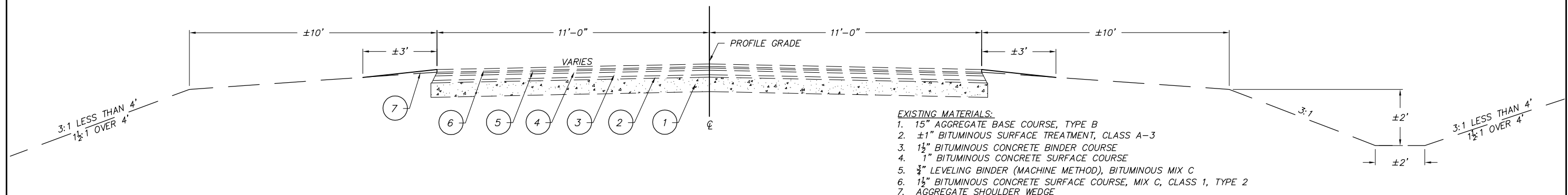
LOCATION / STA. - STA.	TYPE IV SQ. YD.
STA. 164+34.08 - 164+45.21	28
TOTAL	28

CODE NO.	ITEM	UNIT	TOTAL QUANTITY	SPECIAL PROVISION
35800100	PREPARATION OF BASE	SQ YD	126	*
40600290	BITUMINOUS MATERIALS (TACK COAT)	POUND	11,730	
40600982	HOT-MIX ASPHALT SURFACE REMOVAL - BUTT JOINT	SQ YD	739	*
40600990	TEMPORARY RAMP	SQ YD	64	
40604150	POLYMERIZED HOT-MIX ASPHALT SURFACE COURSE, IL-9.5, MIX "C", N50	TON	3,010	*
40800029	BITUMINOUS MATERIALS (TACK COAT)	POUND	410	
40800050	INCIDENTAL HOT-MIX ASPHALT SURFACING	TON	141	
44201723	CLASS D PATCHES, TYPE IV, 6 INCH	SQ YD	28	
48101200	AGGREGATE SHOULDERS, TYPE B	TON	3,600	*
67100100	MOBILIZATION	L SUM	1	
70300100	SHORT TERM PAVEMENT MARKING	FOOT	3,180	
70300150	SHORT TERM PAVEMENT MARKING REMOVAL	SQ FT	1,050	
* 78001110	PAINT PAVEMENT MARKING - LINE 4"	FOOT	8,760	
X7010216	TRAFFIC CONTROL AND PROTECTION, (SPECIAL)	L SUM	1	*
LR400055	CIR-FDR EMULSIFIED ASPHALT	TON	179	*
LR400750	COLD IN-PLACE RECYCLING, 5.0"	SQ YD	26,036	*
LR403300	SURFACE PROFILE MILLING	SQ YD	26,036	*
# Z0076600	TRAINEES	HOUR	500	
# Z0076604	TRAINEES TRAINING PROGRAM GRADUATE	HOUR	500	

* SPECIALTY ITEMS

0042

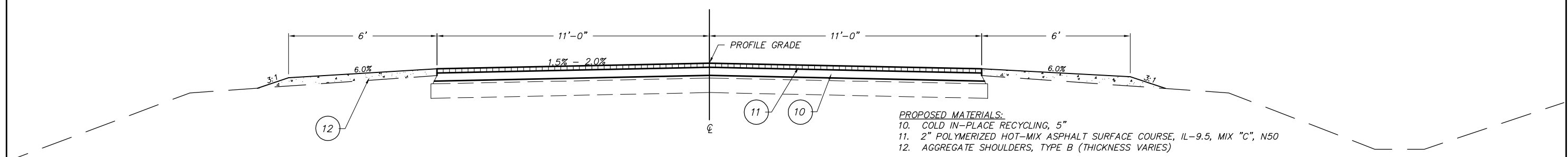
TYPICAL CROSS SECTIONS



- EXISTING MATERIALS:**
1. 15" AGGREGATE BASE COURSE, TYPE B
 2. ±1" BITUMINOUS SURFACE TREATMENT, CLASS A-3
 3. 1½" BITUMINOUS CONCRETE BINDER COURSE
 4. 1" BITUMINOUS CONCRETE SURFACE COURSE
 5. ¾" LEVELING BINDER (MACHINE METHOD), BITUMINOUS MIX C
 6. 1½" BITUMINOUS CONCRETE SURFACE COURSE, MIX C, CLASS 1, TYPE 2
 7. AGGREGATE SHOULDER WEDGE

EXISTING TYPICAL SECTION
STATION 164+34.08 TO STATION 270+00

EXISTING CONSTRUCTION SECTIONS:
 SEC. 62Q (STA. 164+34.08 - 229+17)
 SEC. 62Q-1 (STA. 229+17 - 270+00)
 SEC. SM62Q
 SEC. 95-00148-00-FP LOCATION 1



- PROPOSED MATERIALS:**
10. COLD IN-PLACE RECYCLING, 5"
 11. 2" POLYMERIZED HOT-MIX ASPHALT SURFACE COURSE, IL-9.5, MIX "C", N50
 12. AGGREGATE SHOULDERS, TYPE B (THICKNESS VARIES)

PROPOSED TYPICAL SECTION
STATION 164+34.08 TO STATION 270+00

USER NAME =	DESIGNED -	REVISED -	ADAMS COUNTY HIGHWAY DEPARTMENT	EXISTING TYPICAL SECTIONS	COUNTY	ROUTE	SECTION	TOTAL SHEETS	SHEET NO.
PLOT SCALE = 1:2	DRAWN - AJM	REVISED -			ADAMS	FAS 1588	21-00062-06-FP	13	3
PLOT DATE =	CHECKED -	REVISED -			COUNTY HIGHWAY 48				
	DATE -	REVISED -			SCALE	SHEET 1 OF 1 SHEETS	STA. 164+34.08 TO STA. 270+00	CONTRACT 93816	

GENERAL NOTES

- WHERE SECTION OR SUB-SECTION STONES, PROPERTY PINS, USGS BENCH MARK MONUMENTS, AND U.S. ARMY CORPS OF ENGINEERS SURVEY MARKERS ARE ENCOUNTERED, THE ENGINEER SHALL BE NOTIFIED BEFORE SUCH STONES AND MONUMENTS ARE REMOVED. THE CONTRACTOR SHALL PROTECT AND CAREFULLY PRESERVE ALL PROPERTY MARKS UNTIL AN OWNER, AN AUTHORIZED SURVEYOR OR THEIR REPRESENTATIVE HAS WITNESSED OR OTHERWISE REFERENCED THE PROPERTY MARKS LOCATION.
- ALL PRIVATELY OWNED UTILITIES, UNLESS OTHERWISE SPECIFIED, WILL BE MOVED BY THEIR RESPECTIVE OWNERS WHERE REQUIRED. THE FOLLOWING UTILITY COMPANIES MAY HAVE FACILITIES WITHIN THE LIMITS OF CONSTRUCTION:

AMEREN ILLINOIS ADAMS TELEPHONE ADAMS ELECTRIC AT & T ABS WATER COOP
LEVEL 3 (CENTURY LINK)
- THE NOMINAL THICKNESS FOR THE HOT-MIX ASPHALT SURFACE COURSE AND THE COLD IN-PLACE RECYCLE IS SHOWN ON THE TYPICAL SECTION, STANDARDS, SCHEDULES OR SPECIAL DETAILS. THE CONSTRUCTED THICKNESS OF THE ABOVE ITEMS SHALL NOT BE LESS THAN 90% OF THE NOMINAL THICKNESS AT ANY LOCATION.
- THE UTILITY LOCATIONS, IF MARKED ON THE PLANS, ARE FOR REFERENCE ONLY, AND ARE SHOWN FOR CONTRACTOR INFORMATIONAL USE ONLY, AND ARE NOT TO BE REFERENCED FOR CONSTRUCTION PURPOSES. THE IMPLIED PRESENCE OR ABSENCE OF UTILITIES IS NOT TO BE CONSTRUED BY THE OWNER, ENGINEER, CONTRACTOR, OR SUBCONTRACTORS TO BE AN ACCURATE AND COMPLETE REPRESENTATION OF UTILITIES THAT MAY OR MAY NOT EXIST ON THE CONSTRUCTION SITE.
- THE CONTRACTOR SHALL BE RESPONSIBLE FOR DETERMINING THE LOCATION AND ELEVATION OF ALL EXISTING UTILITIES AND TO NOTIFY ALL UTILITY COMPANIES PRIOR TO THE BEGINNING OF CONSTRUCTION. THE REROUTING, DISCONNECTION, PROTECTION, ETC. OF ANY UTILITIES MUST BE COORDINATED BETWEEN THE CONTRACTOR, UTILITY AND OWNER. SITE SAFETY, INCLUDING THE AVOIDANCE OF HAZARDS ASSOCIATED WITH BURIED AND ABOVE GROUND UTILITIES REMAINS THE SOLE RESPONSIBILITY OF THE CONTRACTOR. THIS WILL BE CONSIDERED INCIDENTAL TO THE CONTRACT.
- ALL DISTURBED AREAS WITHIN THE RIGHT-OF-WAY SHALL BE SEEDED BY OTHERS.
- ANY EXISTING ROAD SIGNS THAT INTERFERE WITH CONSTRUCTION WILL BE REMOVED OR RELOCATED AS DIRECTED BY THE ENGINEER. AFTER THE CONSTRUCTION IS COMPLETED, THE CONTRACTOR WILL REPLACE THE SIGNS AS DIRECTED BY THE ENGINEER. THIS WORK WILL NOT BE PAID FOR SEPERATELY BUT SHALL BE INCLUDED IN THE CONTRACT AND NO ADDITIONAL COMPENSATION WILL BE ALLOWED.

APPLICATION RATES

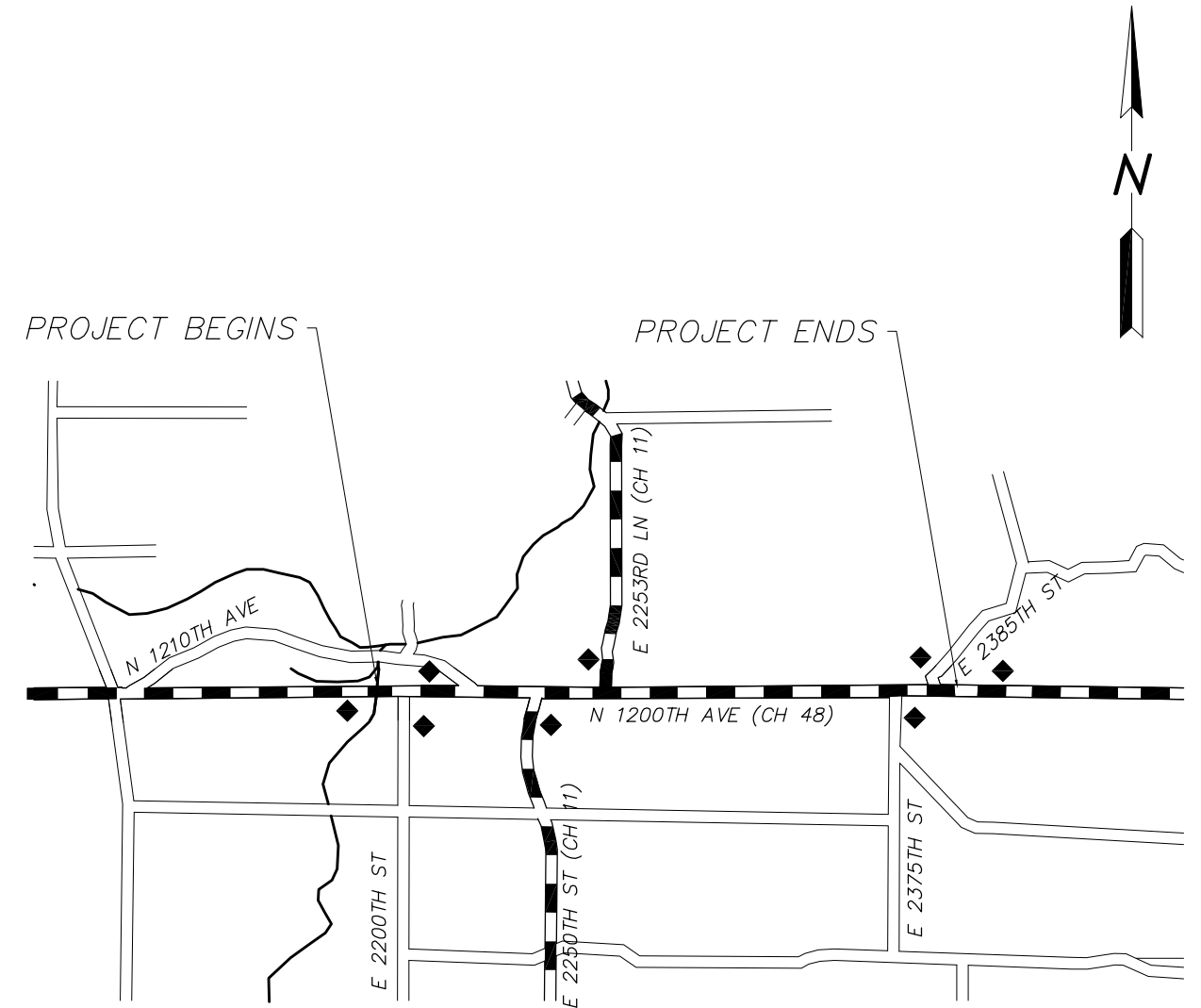
BITUMINOUS MATERIALS (TACK COAT)	
ON EXISTING PAVEMENT	0.05 LB/SQ FT
BETWEEN HMA LIFTS	0.025 LB/SQ FT
AGGREGATE (SURFACE, SHOULDERS)	
	1.8 TON/CU YD

HOT-MIX ASPHALT MIXTURE REQUIREMENTS

LOCATION(S):	CO HWY 48	CO HWY 48	SIDE ROADS/ENTRANCES
MIXTURE USE(S):	PATCHING	HMA SURF CSE	INCIDENTAL HMA SURF
AC/PG:	PG 64-22	SBS PG 64-28	PG 64-22
DESIGN AIR VOIDS	4.0% @ N design = 50	4.0% @ N design = 50	4.0% @ N design = 50
MIXTURE COMPOSITION	IL 19.0	IL 9.5	IL 9.5
FRICTION AGGREGATE	N/A	MIX "C"	N/A
QUALITY MANAGEMENT	QC/QA	QC/QA	QC/QA
SUBLOT SIZE	N/A	N/A	N/A

NOTE: HOT-MIX ASPHALT QUANTITIES CALCULATED @ 112 #/SQ. YD. / IN.

TRAFFIC CONTROL AND PROTECTION



◆ ROAD CONSTRUCTION AHEAD

SEE SPECIAL PROVISIONS FOR APPLICATION OF:
"NO PASSING ZONES NOT STRIPPED NEXT ____ MILES"

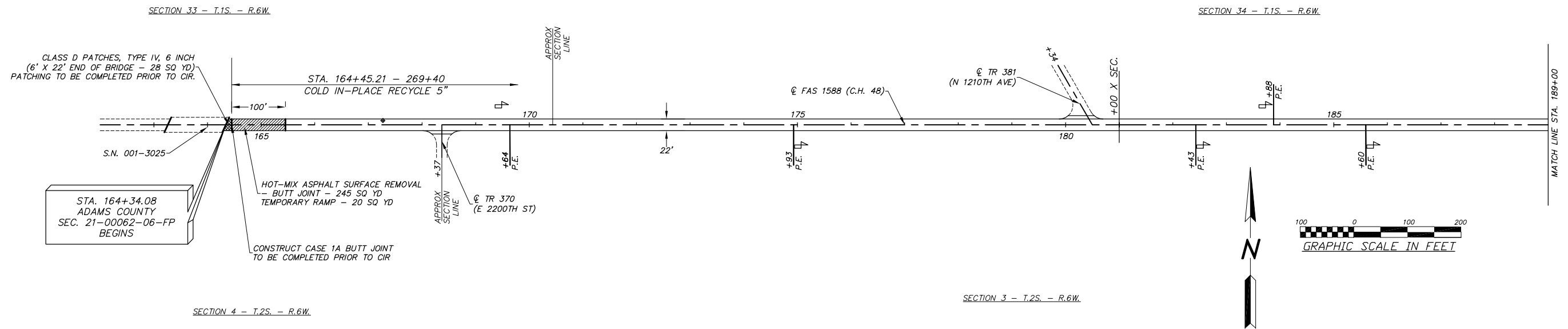
USER NAME =	DESIGNED -	REVISED -
PLOT SCALE = 1:2	DRAWN - AJM	REVISED -
PLOT DATE =	CHECKED -	REVISED -
	DATE -	REVISED -

**ADAMS COUNTY
HIGHWAY DEPARTMENT**

GENERAL NOTES HMA MIXTURE REQUIREMENTS
APPLICATION RATES TRAFFIC CONTROL AND PROTECTION

SCALE SHEET 1 OF 1 SHEETS STA. -- TO STA. --

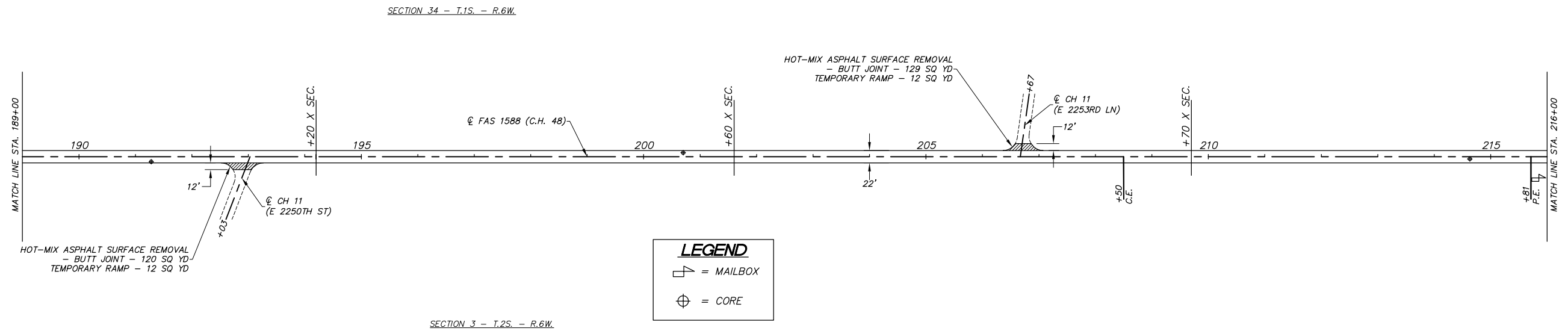
COUNTY	ROUTE	SECTION	TOTAL SHEETS	SHEET NO.
ADAMS	FAS 1588	21-00062-06-FP	13	4
COUNTY HIGHWAY 48			CONTRACT 93816	



ROADWAY CORES (2')

STA. - OFFSET	HMA	BIT. MAT'L'S	AGGREGATE
167+27 8' L	5.5"	1"	NO PROBE
191+28 9' R	5.25"	1"	NO PROBE
200+70 7' L	6"	1"	14"
214+63 4' R	5.5"	1"	12.5"

FOR INFORMATION ONLY



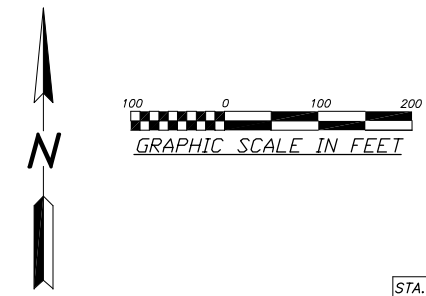
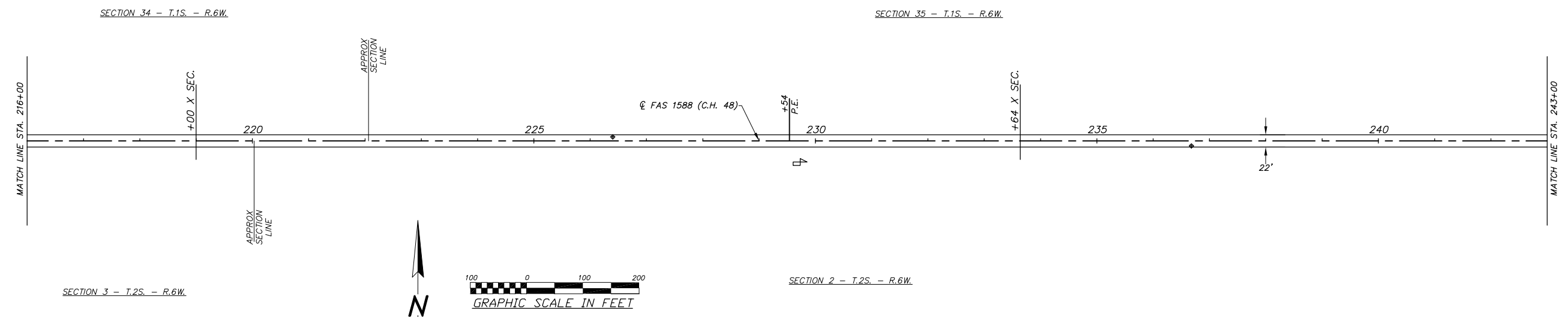
USER NAME =	DESIGNED -	REVISED -
PLOT SCALE = 1:100	DRAWN - AJM	REVISED -
PLOT DATE =	CHECKED -	REVISED -
	DATE -	REVISED -

**ADAMS COUNTY
HIGHWAY DEPARTMENT**

PAVING PLAN

SCALE 1:100 SHEET 1 OF 2 SHEETS STA. 164+34.08 TO STA. 216+00

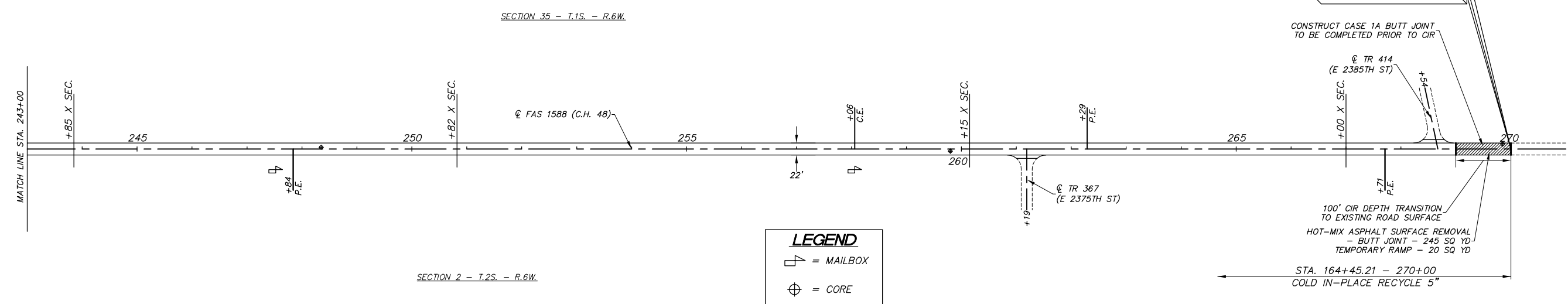
COUNTY	ROUTE	SECTION	TOTAL SHEETS	SHEET NO.
ADAMS	FAS 1588	21-00062-06-FP	13	5
COUNTY HIGHWAY 48			CONTRACT 93816	



ROADWAY CORES (2")

STA. - OFFSET	HMA	BIT. MAT'L'S	AGGREGATE
226+40 7' L	5"	1"	13.5"
236+68 9' R	6.5"	0.5"	14"
248+35 3' L	5"	1"	14"
259+80 4' R	5.5"	1"	14.5"
269+85 9' L	5.5"	1"	13.5"

FOR INFORMATION ONLY



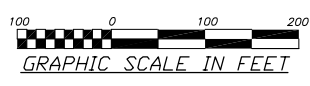
USER NAME =	DESIGNED -	REVISED -
PLOT SCALE = 1:100	DRAWN - AJM	REVISED -
PLOT DATE =	CHECKED -	REVISED -
	DATE -	REVISED -

**ADAMS COUNTY
HIGHWAY DEPARTMENT**

PAVING PLAN

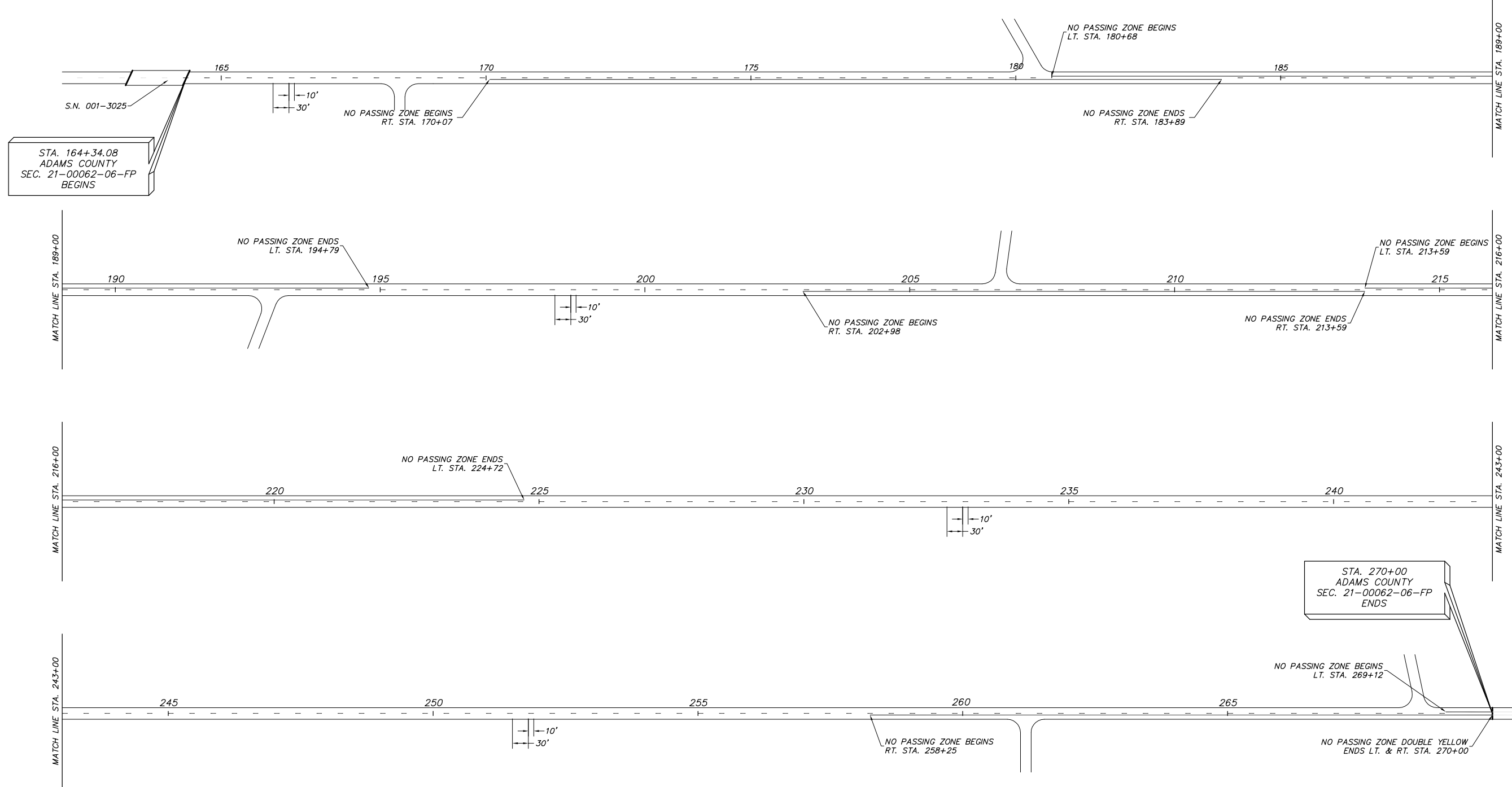
SCALE 1:100 SHEET 2 OF 2 SHEETS STA. 216+00 TO STA. 270+00

COUNTY	ROUTE	SECTION	TOTAL SHEETS	SHEET NO.
ADAMS	FAS 1588	21-00062-06-FP	13	6
COUNTY HIGHWAY 48			CONTRACT 93816	



PAVEMENT MARKINGS

LOCATION / STA. - STA.	PAINT PAVEMENT MARKING - LINE 4" (YELLOW)	SHORT TERM PAVEMENT MARKING	SHORT TERM PAVEMENT MARKING REMOVAL
	FOOT	FOOT	SQ FT
STA. 164+34.08 - 270+00	8,760	3,180	1,050
TOTAL	8,760	3,180	1,050



STA. 164+34.08
ADAMS COUNTY
SEC. 21-00062-06-FP
BEGINS

STA. 270+00
ADAMS COUNTY
SEC. 21-00062-06-FP
ENDS

USER NAME =	DESIGNED -	REVISED -
PLOT SCALE = 1:100	DRAWN - AJM	REVISED -
PLOT DATE =	CHECKED -	REVISED -
	DATE -	REVISED -

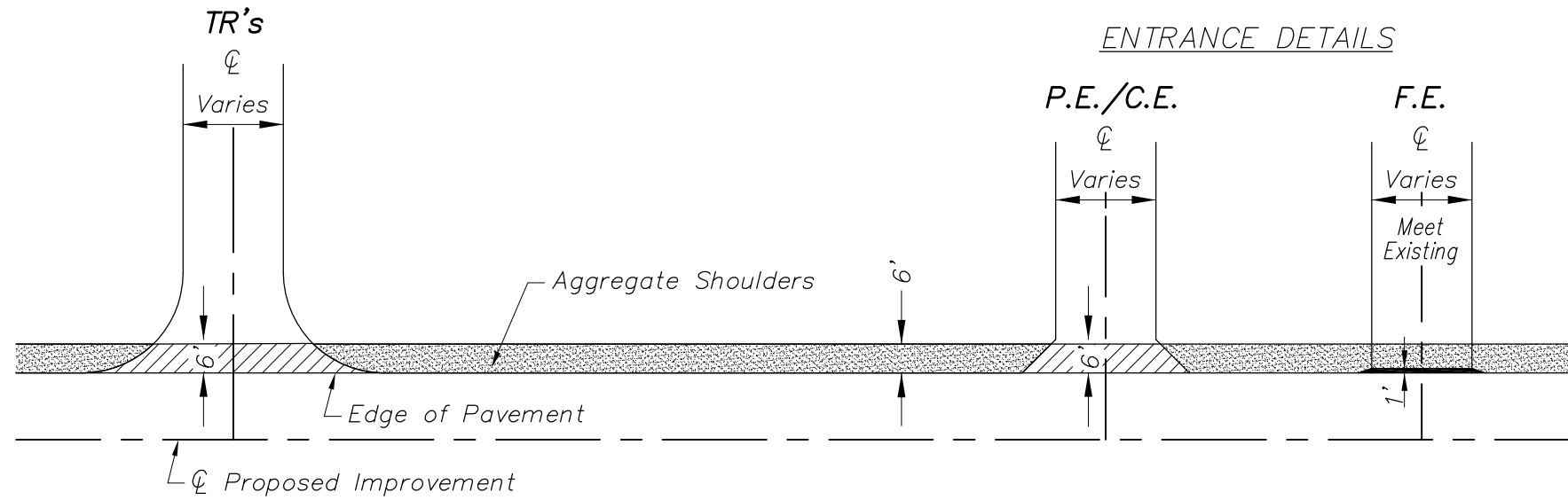
**ADAMS COUNTY
HIGHWAY DEPARTMENT**

STRIPING PLAN

SCALE 1:100 SHEET 1 OF 1 SHEETS STA. 164+34.08 TO STA. 270+00

COUNTY	ROUTE	SECTION	TOTAL SHEETS	SHEET NO.
ADAMS	FAS 1588	21-00062-06-FP	13	7
COUNTY HIGHWAY 48			CONTRACT 93816	

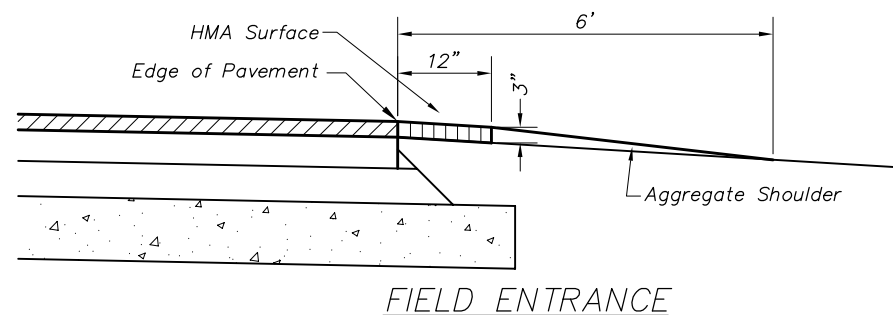
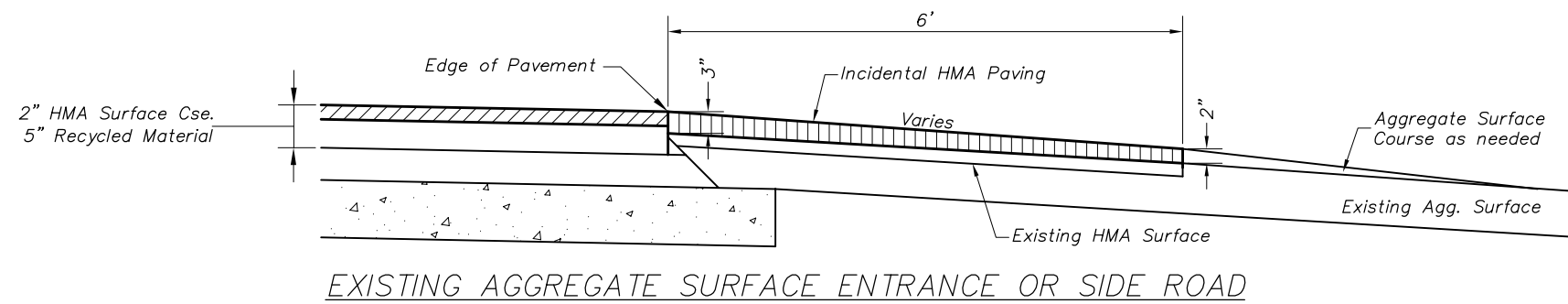
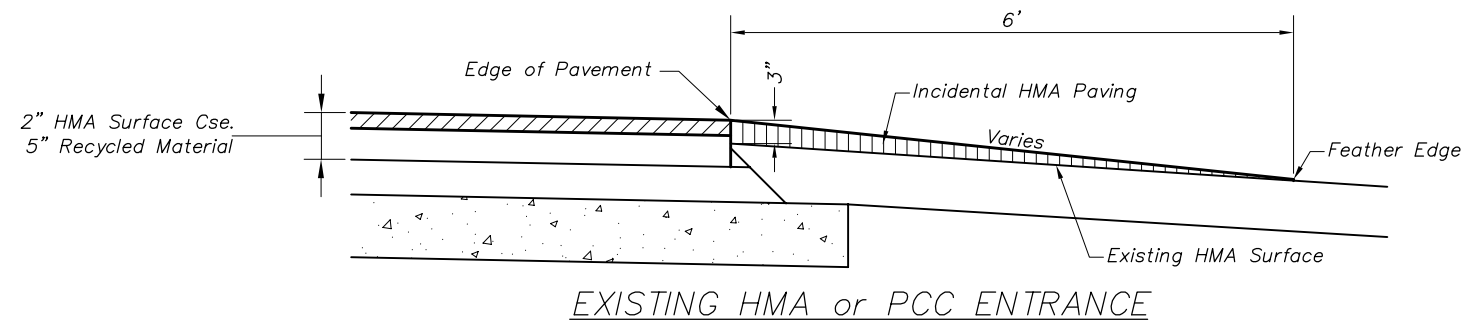
INTERSECTION DETAIL



ENTRANCE DETAILS

INCIDENTAL PAVING SCHEDULE
(ENTRANCES AND SIDE ROADS)

LOCATION / STA. - STA.	PREPARATION OF BASE	INCIDENTAL HOT-MIX ASPHALT SURFACING	BITUMINOUS MATERIALS (TACK COAT)
	SQ YD	TON	POUND
RT. STA. 168+37, TR		4	15
RT. STA. 169+64, PE		4	13
RT. STA. 174+93, PE	19	4	5
LT. STA. 180+34, TR		6	19
RT. STA. 182+43, PE	26	4	
LT. STA. 183+88, PE		3	11
RT. STA. 185+60, PE		3	10
RT. STA. 193+03, CH 11		16	54
LT. STA. 206+67, CH 11		17	58
RT. STA. 208+50, CE		3	11
RT. STA. 215+81, PE		4	14
LT. STA. 229+54, PE		4	14
RT. STA. 247+84, PE		5	17
LT. STA. 258+06, CE	52	7	
RT. STA. 261+19, TR		8	26
LT. STA. 262+29, PE		4	10
RT. STA. 267+71, PE		4	11
LT. STA. 268+54, TR		15	52
TOTAL	97	115	340



USER NAME =	DESIGNED -	REVISED -
PLOT SCALE = 1:1	DRAWN - AJM	REVISED -
PLOT DATE =	CHECKED -	REVISED -
	DATE -	REVISED -

**ADAMS COUNTY
HIGHWAY DEPARTMENT**

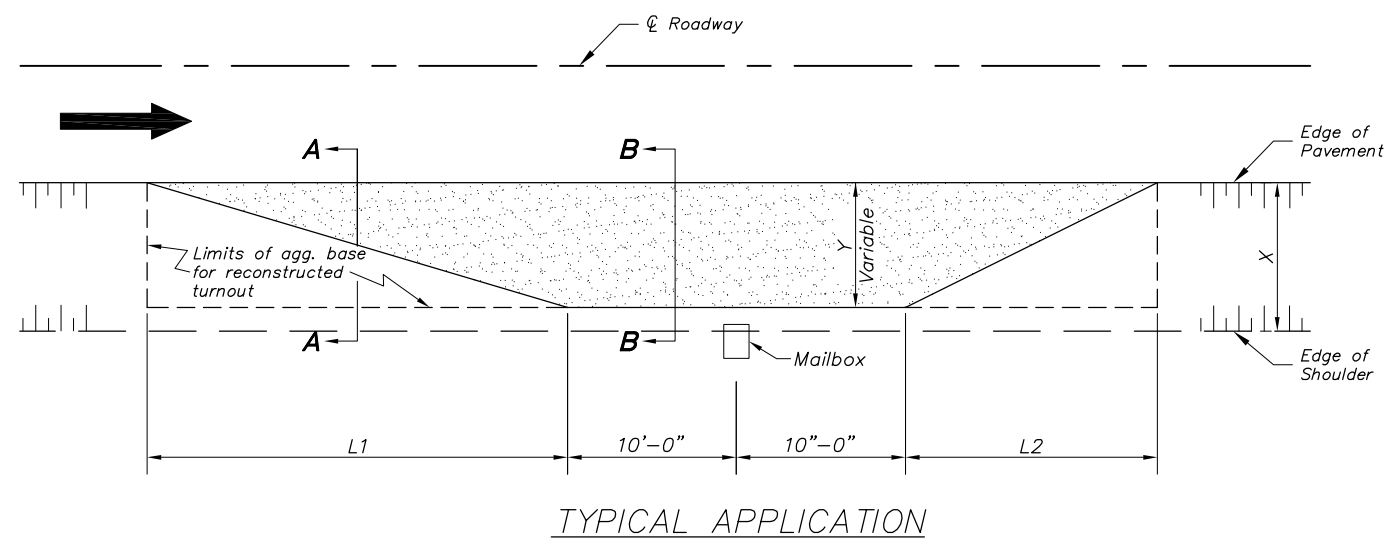
EXISTING ENTRANCE RESURFACING

SCALE: NONE SHEET 1 OF 1 SHEETS STA. -- TO STA. --

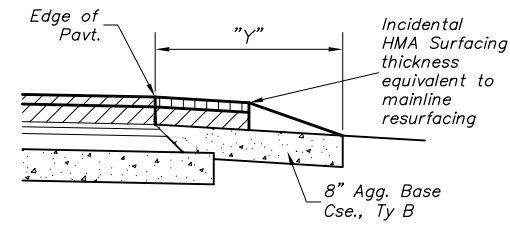
COUNTY	ROUTE	SECTION	TOTAL SHEETS	SHEET NO.
ADAMS	FAS 1588	21-00062-06-FP	13	8
COUNTY HIGHWAY 48			CONTRACT 93816	

**INCIDENTAL PAVING SCHEDULE
(MAILBOX TURNOUTS)**

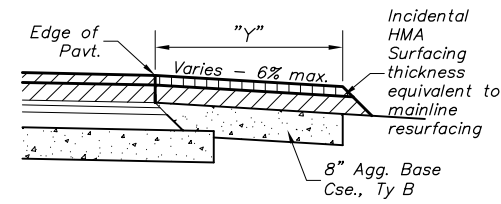
LOCATION / STA. - STA.	PREPARATION OF BASE	INCIDENTAL HOT-MIX ASPHALT SURFACING	BITUMINOUS MATERIALS (TACK COAT)
	SQ YD	TON	POUND
LT. STA. 169+48		5	13
RT. STA. 175+05	10	2	3
RT. STA. 182+65	13	2	
LT. STA. 183+73		2	6
RT. STA. 185+78		2	5
RT. STA. 215+86		2	7
RT. STA. 229+73		4	14
RT. STA. 247+50		3	9
RT. STA. 258+06	6	4	13
TOTAL	29	26	70



TYPICAL APPLICATION

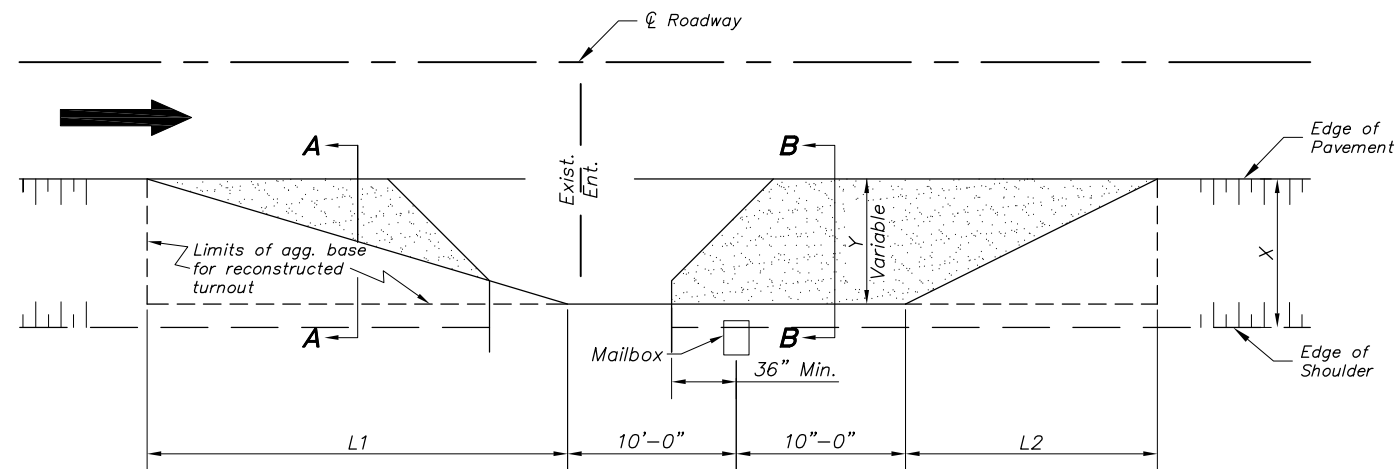


SECTION A-A

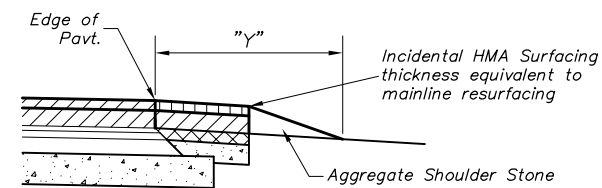


SECTION B-B

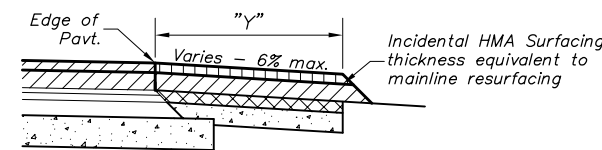
RECONSTRUCTED TURNOUTS



MAILBOX ON FARSIDE OF ENTRANCE

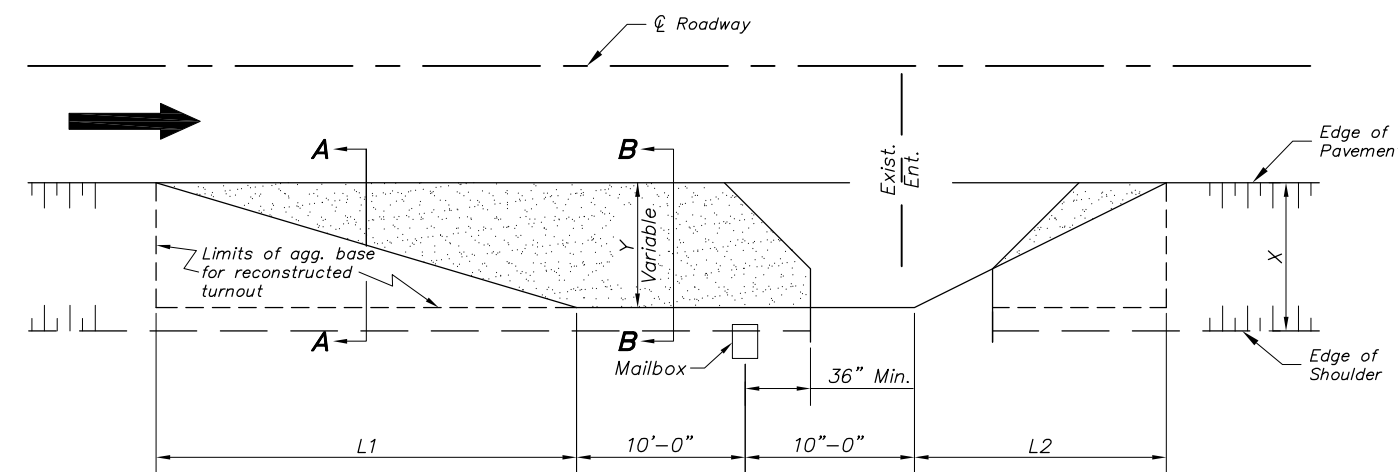


SECTION A-A



SECTION B-B

RESURFACED TURNOUTS



MAILBOX ON NEARSIDE OF ENTRANCE

DIMENSIONS - ft.						
Width of Shoulder (X)	12	10	8	6	5	4
Width of Turnout (Y)	8	8	6	4	4	4
L1	30	30	23	15	15	15
L2	20	20	15	10	10	10

GENERAL NOTES:

The Engineer reserves the right to alter the placement of the mailbox turnout to match existing conditions and utilize the entrance as part of the taper.

Mailboxes shall be mounted such that the face of the mailbox is 6" to 12" and the post a minimum of 24" from the edge of the turnout surfacing.

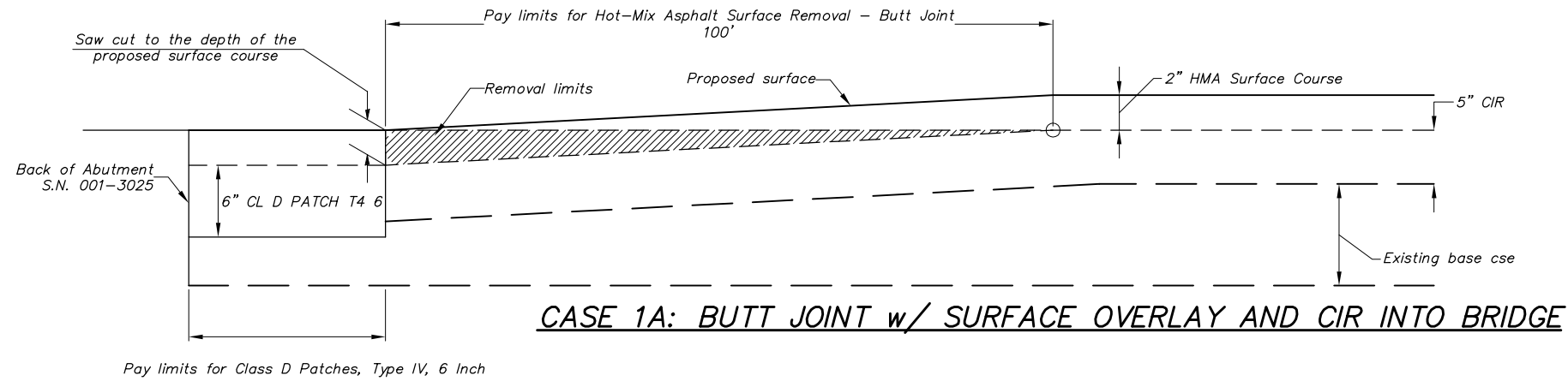
USER NAME =	DESIGNED -	REVISED -
PLOT SCALE = 1:1	DRAWN - AJM	REVISED -
PLOT DATE =	CHECKED -	REVISED -
	DATE -	REVISED -

**ADAMS COUNTY
HIGHWAY DEPARTMENT**

MAILBOX TURNOUTS

SCALE: NONE SHEET 1 OF 1 SHEETS STA. -- TO STA. --

COUNTY	ROUTE	SECTION	TOTAL SHEETS	SHEET NO.
ADAMS	FAS 1588	21-00062-06-FP	13	9
COUNTY HIGHWAY 48			CONTRACT 93816	



General Notes

1. The work shall be done in accordance with Article 406.08 and the Special Provision for Butt Joints.
2. The pavement surface to be removed may be either HMA or P.C. concrete. The work shall be performed in accordance with Article 440.04 and the Special Provisions for Butt Joints.
3. The saw cut joints shall be primed just prior to the placing of HMA material. The work will be in accordance with the applicable portions of Article 406.05.

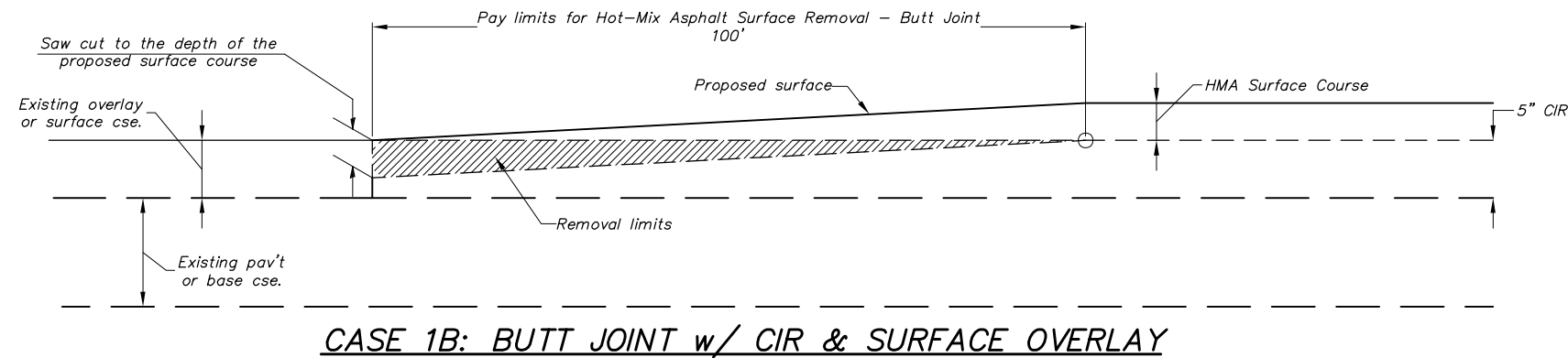
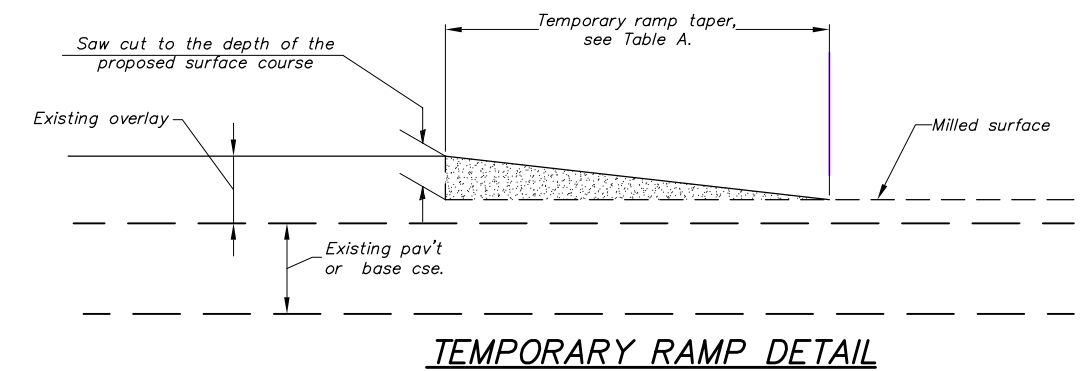
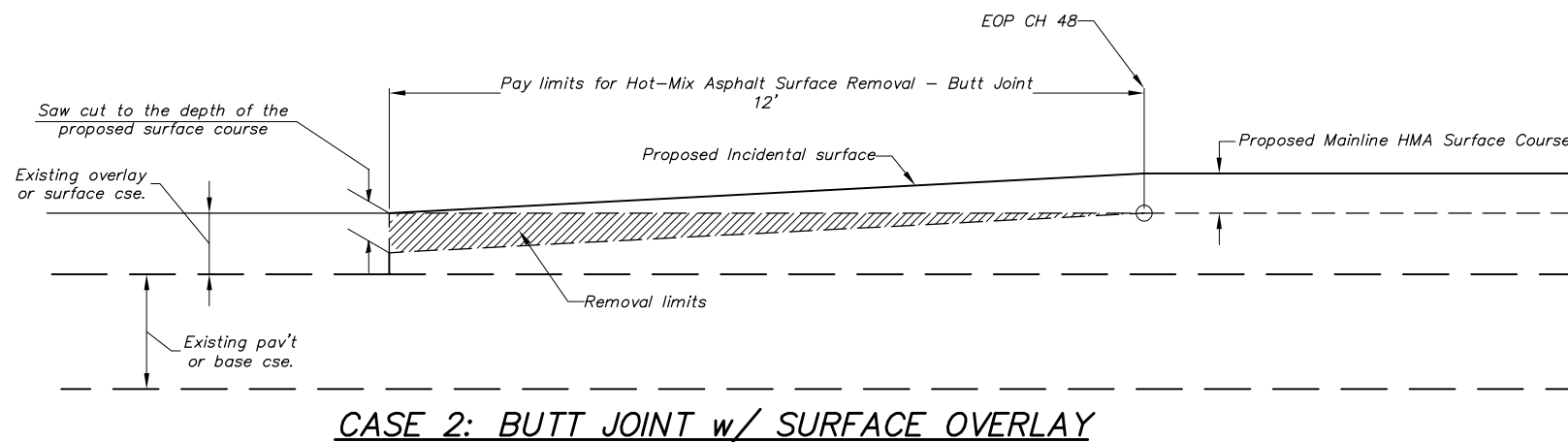


TABLE A - TAPER RATES

ELEMENT	POSTED SPEED < 45 MPH	POSTED SPEED => 45 MPH
BUTT JOINT	20' per 1" of DEPTH	30' per 1" of DEPTH
FEATHEREDGE	20' per 1" of THICKNESS	30' per 1" of THICKNESS LESS 3/8" from TOTAL
TEMPORARY RAMP	3' per 1" of HEIGHT	4' per 1" of DEPTH

Length of Butt Joint = Thickness of Surface Cse multiplied by the Taper Rate.
 Length of Pav't Transition = Total Pav't thickness multiplied by the Taper Rate.



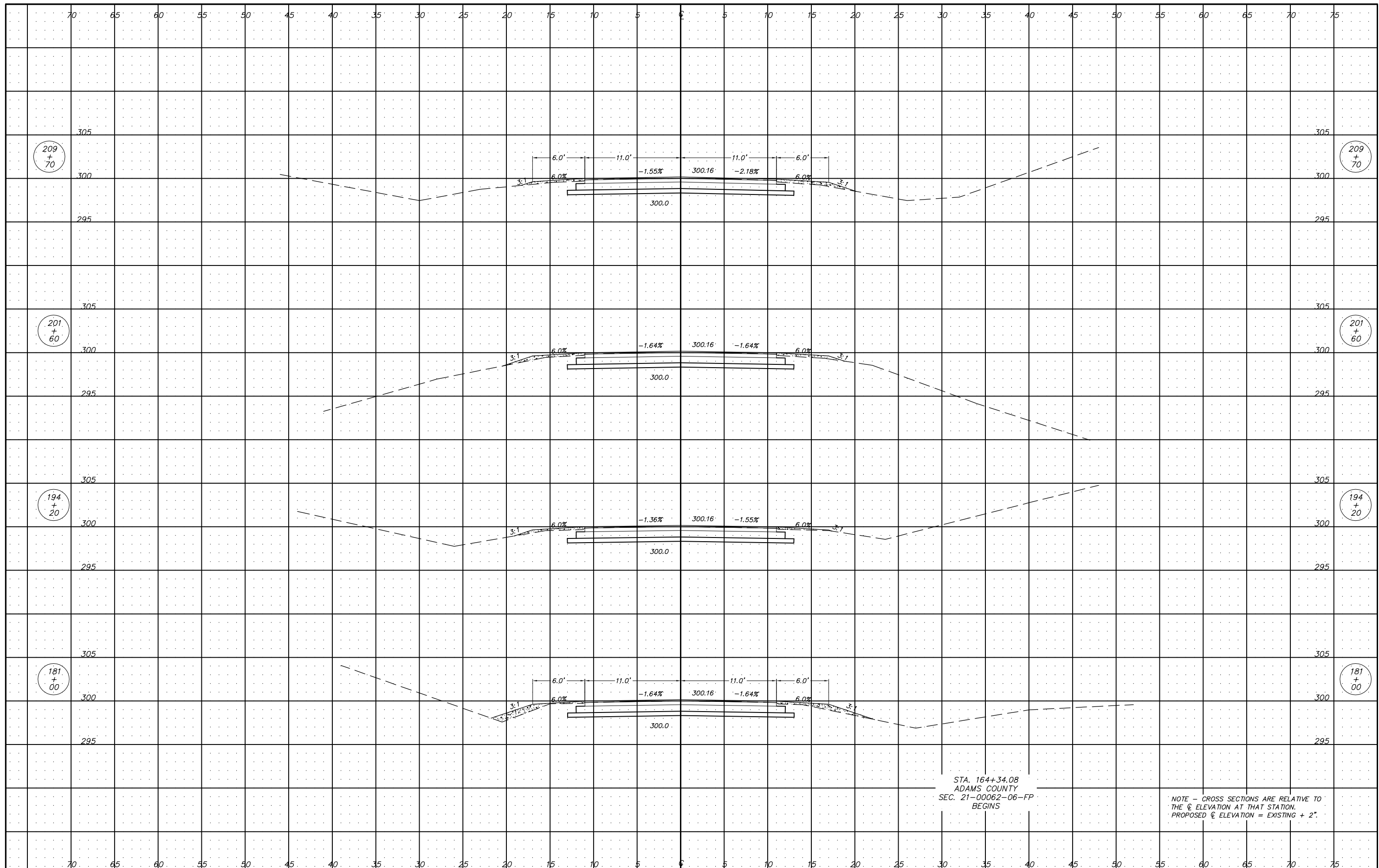
USER NAME =	DESIGNED -	REVISED -
PLOT SCALE = 1:20	DRAWN - AJM	REVISED -
PLOT DATE =	CHECKED -	REVISED -
	DATE -	REVISED -

**ADAMS COUNTY
HIGHWAY DEPARTMENT**

**BUTT JOINTS
FEATHER EDGE TRANSITIONS**

COUNTY	ROUTE	SECTION	TOTAL SHEETS	SHEET NO.
ADAMS	FAS 1588	21-00062-06-FP	13	10
CONTRACT 93816				

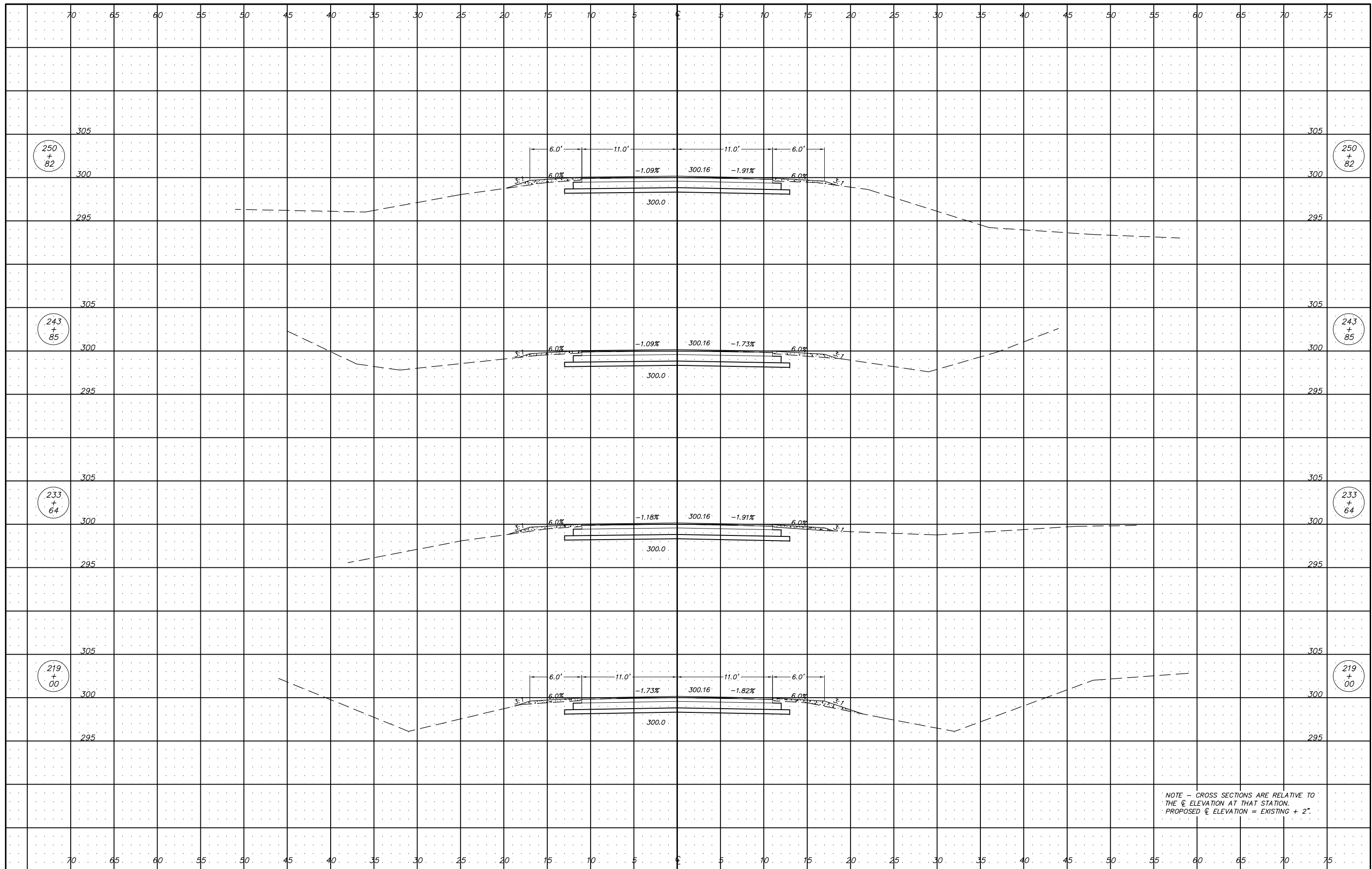
SCALE: NONE SHEET 1 OF 1 SHEETS STA. -- TO STA. --



STA. 164+34.08
ADAMS COUNTY
SEC. 21-00062-06-FP
BEGINS

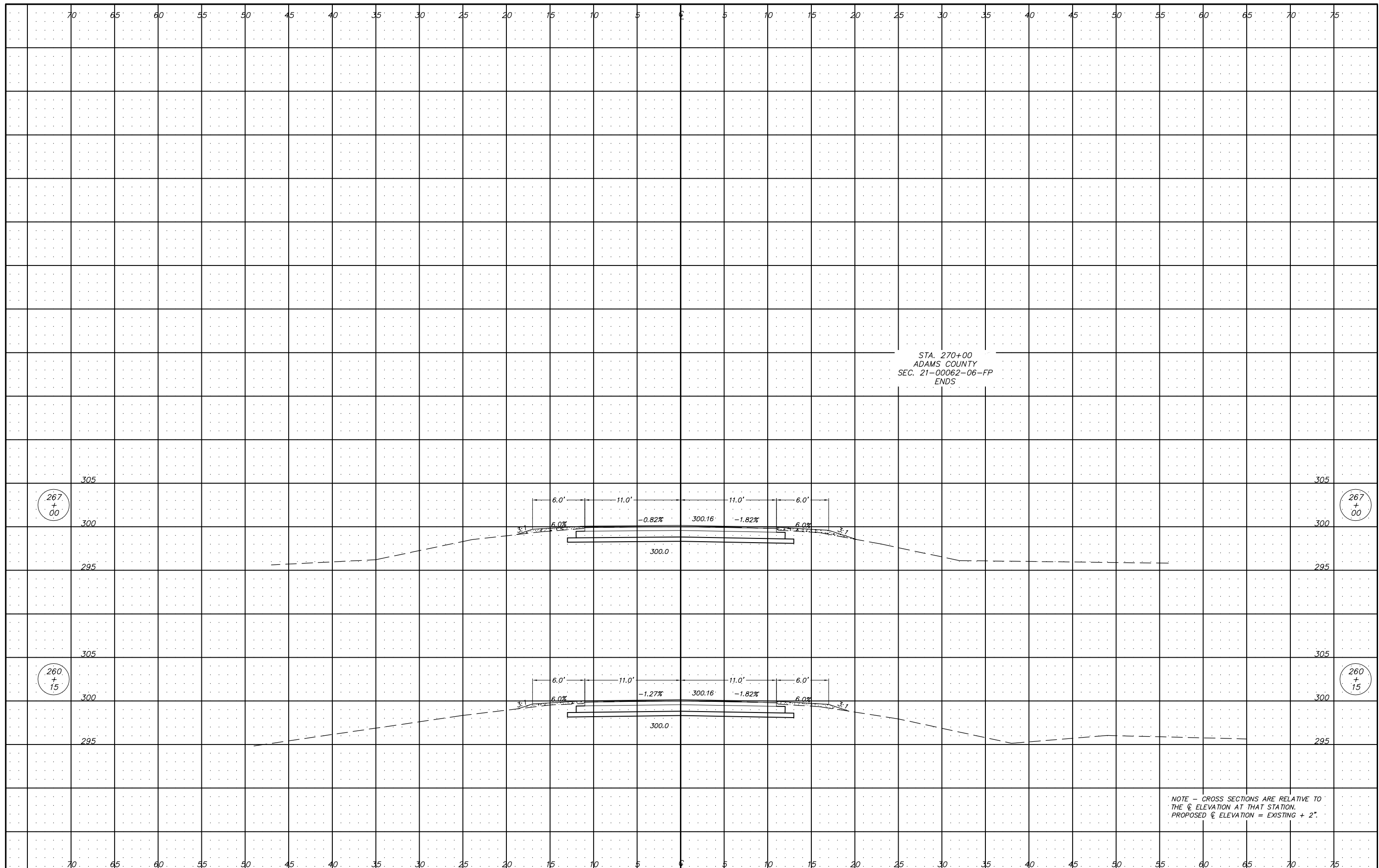
NOTE - CROSS SECTIONS ARE RELATIVE TO
THE C ELEVATION AT THAT STATION.
PROPOSED C ELEVATION = EXISTING + 2".

USER NAME =	DESIGNED -	REVISED -	ADAMS COUNTY HIGHWAY DEPARTMENT	CROSS SECTIONS	COUNTY	ROUTE	SECTION	TOTAL SHEETS	SHEET NO.	
PLOT SCALE = 1:5	DRAWN - AJM	REVISED -			ADAMS	FAS 1588	21-00062-06-FP	13	11	
PLOT DATE =	CHECKED -	REVISED -			COUNTY HIGHWAY 48					
	DATE -	REVISED -			SCALE 1" = 5'	SHEET 1 OF 3 SHEETS	STA. 164+34.08 TO STA. 209+70	CONTRACT 93816		



NOTE - CROSS SECTIONS ARE RELATIVE TO THE C ELEVATION AT THAT STATION.
 PROPOSED C ELEVATION = EXISTING + 2".

USER NAME =	DESIGNED -	REVISED -	ADAMS COUNTY HIGHWAY DEPARTMENT	CROSS SECTIONS	COUNTY	ROUTE	SECTION	TOTAL SHEETS	SHEET NO.	
PLOT SCALE = 1:5	DRAWN - AJM	REVISED -			ADAMS	FAS 1588	21-00062-06-FP	13	12	
PLOT DATE =	CHECKED -	REVISED -			COUNTY HIGHWAY 48					
	DATE -	REVISED -			SCALE 1" = 5'	SHEET 2 OF 3 SHEETS	STA. 219+00 TO STA. 250+82	CONTRACT 93816		



STA. 270+00
ADAMS COUNTY
SEC. 21-00062-06-FP
ENDS

NOTE - CROSS SECTIONS ARE RELATIVE TO THE CL ELEVATION AT THAT STATION.
PROPOSED CL ELEVATION = EXISTING + 2".

USER NAME =	DESIGNED -	REVISED -	ADAMS COUNTY HIGHWAY DEPARTMENT	CROSS SECTIONS		COUNTY	ROUTE	SECTION	TOTAL SHEETS	SHEET NO.
PLOT SCALE = 1:5	DRAWN - AJM	REVISED -		ADAMS	FAS 1588	21-00062-06-FP	13	13		
PLOT DATE =	CHECKED -	REVISED -		SCALE 1" = 5'		SHEET 3 OF 3 SHEETS	STA. 260+15 TO STA. 270+00		CONTRACT 93816	
	DATE -	REVISED -								