

MUN. RTE.	SECTION	COUNTY	TOTAL SHEETS	SHEET NO.
6190	18-00055-00-BR	MONROE	21	1
ILLINOIS			CONTRACT NO. 97809	

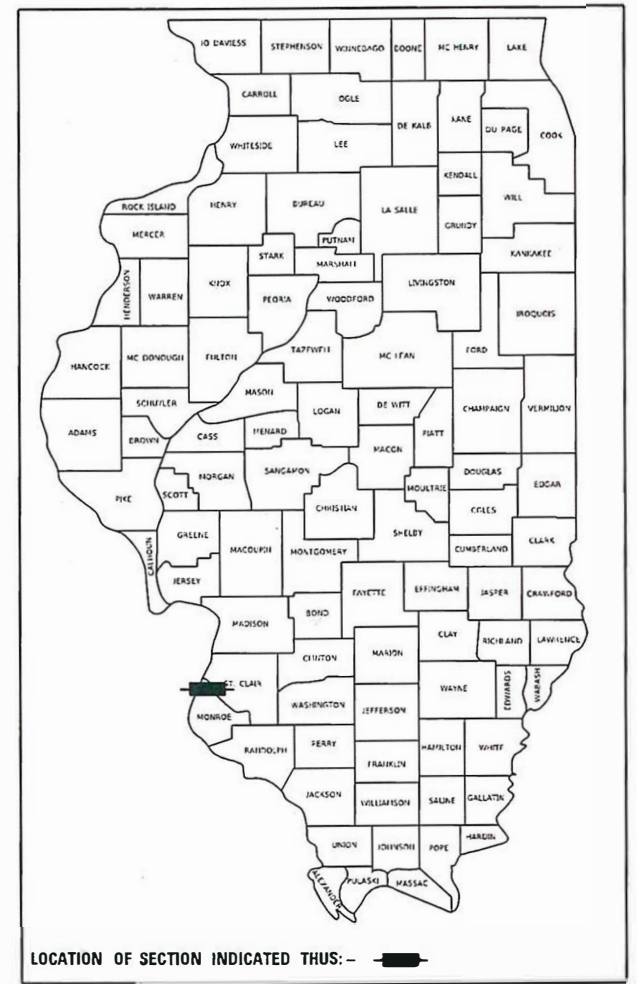
INDEX OF SHEETS 03-08-2024 LETTING ITEM 161

- 1 COVER SHEET
- 2 GENERAL NOTES, COMMITMENTS
- 3 SUMMARY OF QUANTITIES
- 4-5 TYPICAL SECTIONS
- 6-7 SCHEDULE OF QUANTITIES
- 8 REMOVAL PLAN
- 9 PLAN AND PROFILE
- 10 EROSION CONTROL PLAN
- 11 PAVMENT MARKING PLAN
- 12 DETOUR SIGNING
- 13 TEMPORARY RIGHT-IN RIGHT-OUT ENTRANCE
- 14 GUTTER OUTLET DETAIL
- 15-20 STRUCTURE PLANS
- 21 CROSS SECTIONS

STATE OF ILLINOIS

DEPARTMENT OF TRANSPORTATION

PLANS FOR PROPOSED LOCAL AGENCY IMPROVEMENT

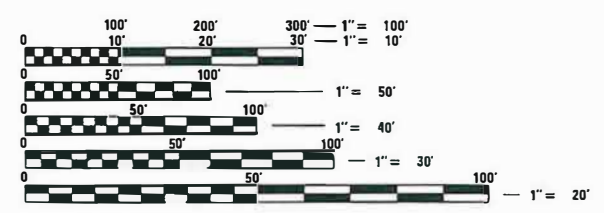


IDOT HIGHWAY STANDARDS

- 000001-08 STANDARD SYMBOLS, ABBREVIATIONS AND PATTERNS
- 001001-02 AREAS OF REINFORCEMENT BARS
- 001006 DECIMAL OF AN INCH AND OF A FOOT
- 280001-07 TEMPORARY EROSION CONTROL SYSTEMS
- 606101-05 TYPE A GUTTER (INLET, OUTLET & ENTRANCE)
- 701101-05 OFF-ROAD OPERATIONS, MULTILANE, 15' TO 24"
- 701422-10 LANE CLOSURE, MULTILANE, FOR SPEEDS ≥ 45 MPH TO 55 MPH
- 701501-06 URBAN LANE CLOSURE, 2L, 2W, UNDIVIDED
- 701901-09 TRAFFIC CONTROL DEVICES
- 720001-01 SIGN PANEL MOUNTING DETAILS
- 720006-04 SIGN PANEL ERECTION DETAILS
- BLR 22-7 TYPICAL APPLICATION OF TRAFFIC CONTROL DEVICES FOR CONSTRUCTION ON RURAL LOCAL HIGHWAYS (2L2W CLOSED TO THRU TRAFFIC)

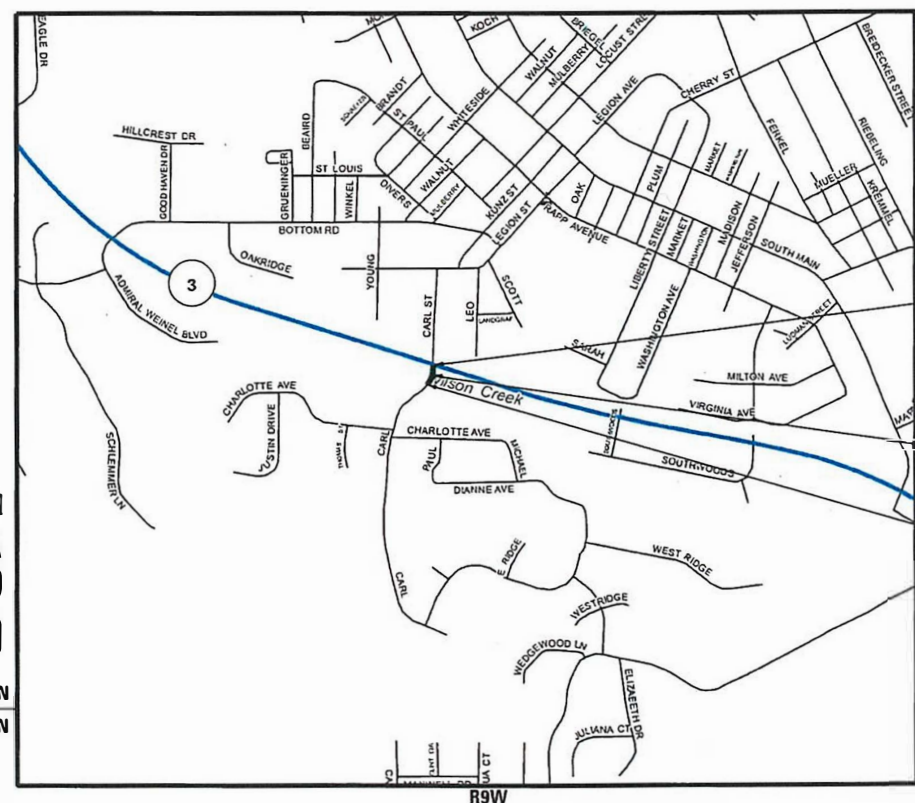
STP-BR FUNDS
CITY OF COLUMBIA
CARL ST (MUN 6190) OVER WILSON CREEK
SECTION 18-00055-00-BR
STRUCUTRE NO: 067-6014
PROJECT NO. KCT9(777)
MONROE COUNTY
C-98-020-22

DESIGN DESIGNATION
ROADWAY CLASSIFICATION: URBAN 2-LANE LOCAL ROAD
DESIGN SPEED: 30 MPH
CURRENT ADT (2019): 1150
DESIGN YEAR ADT (2022): 1260



FULL SIZE PLANS HAVE BEEN PREPARED USING STANDARD ENGINEERING SCALES. REDUCED SIZED PLANS WILL NOT CONFORM TO STANDARD SCALES. IN MAKING MEASUREMENTS ON REDUCED PLANS, THE ABOVE SCALES MAY BE USED.

J.U.L.I.E.
 JOINT UTILITY LOCATION INFORMATION FOR EXCAVATORS
 1-800-892-0123
 OR 811



END PROJECT
 STA. 12+50.00

EX SN: 067-6009
 PR SN: 067-6014
 STA. 11+61.81

BEGIN PROJECT
 STA. 10+40.00

LOCATION MAP

SCALE: 1"=2400'
 GROSS LENGTH = 210 FT. = 0.040 MILE
 NET LENGTH = 210 FT. = 0.040 MILE



11-28-23
 JOSHUA W. STEIN, P.E.
 LICENSE NO. 062-062775 EXPIRATION DATE 11-30-2025

STATE OF ILLINOIS DEPARTMENT OF TRANSPORTATION	
APPROVED _____	11-29 20 23
MAYOR CITY OF COLUMBIA	
PASSED _____	12-13 20 23
DISTRICT 8 ENGINEER LOCAL ROADS & STREETS	
RELEASED FOR BID BASED ON LIMITED REVIEW	12-13 20 23
REGION FIVE ENGINEER	

PRINTED BY THE AUTHORITY OF THE STATE OF ILLINOIS

PLANS PREPARED BY:

4940 Old Collinsville Road
 Swansea, Illinois 62226
 Tel: 618.624.4488
 www.twm-inc.com

Illinois Professional Design Firm
 No. 184-001220
 License Expires: 4/30/2023
 ILLINOIS - MISSOURI - TENNESSEE

GENERAL NOTES

1. IT IS NOT WARRANTED THAT THIS DOCUMENT CONTAINS COMPLETE INFORMATION REGARDING EASEMENTS, RESERVATIONS, RESTRICTIONS, RIGHT-OF-WAYS, BUILDING LINE SETBACKS, AND OTHER ENCUMBRANCES. FOR COMPLETE INFORMATION, A TITLE OPINION OR COMMITMENT FOR TITLE INSURANCE SHOULD BE OBTAINED AND THOROUGHLY REVIEWED.
2. THE CONTRACTOR SHALL VERIFY ALL DIMENSIONS AND CONDITIONS IN THE FIELD PRIOR TO ORDERING OF MATERIALS AND COMMENCING CONSTRUCTION.
3. THE CONTRACTOR SHALL STAGE ALL WORK IN SUCH A WAY AS TO MAINTAIN INGRESS AND EGRESS TO ALL ABUTTING PROPERTIES.
4. THE CONTRACTOR SHALL CONFINE ALL OPERATIONS TO THE CONSTRUCTION LIMITS LINE SHOWN ON THE PLANS. ANY AREA DISTURBED BEYOND THESE LIMITS SHALL BE RESTORED TO ITS ORIGINAL CONDITION AT THE CONTRACTOR'S EXPENSE.

DRAINAGE AND EROSION CONTROL

1. EXISTING DITCHES/SWALES MAY NEED TO BE REGRADED OR RESHAPED TO ENSURE ALL FLOWS ENTER THE PROPER DITCH, CULVERT OR OTHER DRAINAGE APPURTENANCES DURING AND AT THE COMPLETION OF THE PROJECT. COST FOR THIS WORK IS CONSIDERED INCLUDED IN THE COST OF EARTH EXCAVATION.
2. IT SHALL BE THE RESPONSIBILITY OF THE CONTRACTOR TO MAINTAIN POSITIVE DRAINAGE DURING VARIOUS STAGES OF CONSTRUCTION. THIS INCLUDES ALL LABOR, EQUIPMENT AND MATERIALS USED BEYOND WHAT IS SPECIFIED IN THE PLANS. NECESSARY ITEMS SUCH AS TEMPORARY DITCHES OR PIPES WILL NOT BE PAID FOR SEPERATELY AND SHALL BE CONSIDERED INCLUDED IN THE COST OF THE CONTRACT.
3. EROSION AND SEDIMENT CONTROL SHALL BE PERFORMED IN ACCORDANCE WITH SECTION 280 OF THE STANDARD SPECIFICATIONS.
4. ALL TEMPORARY AND PERMANENT EROSION CONTROL DEVICES SHALL BE IMPLEMENTED AS SHOWN IN THE PLANS AND APPLICABLE HIGHWAY STANDARDS. IT IS THE CONTRACTOR'S RESPONSIBILITY TO INSURE THAT ALL EROSION AND SEDIMENT DOES NOT MIGRATE OFF SITE. IF UNEXPECTED EROSION OR SEDIMENT DOES MIGRATE OFF SITE OR IF EROSION CONTROL DEVICES BECOME DAMAGED, THE CONTRACTOR SHALL PROVIDE SUFFICIENT MEASURES TO REPAIR OR REPLACE THE DEVICES.
5. LAYOUT OF RIPRAP MAY BE VARIED TO SUIT EXISTING GROUND CONDITIONS, PER THE DIRECTION OF THE ENGINEER.

MIXTURE REQUIREMENTS

MIXTURE USE	SURFACE	BINDER	INCIDENTAL
DEPTH	2 INCH	5 INCH	3 INCH
AC/PG	PG 64-22	PG 64-22	PG 64-22
DESIGN AIR VOIDS	4.0% @ Ndes=70	4.0% @ Ndes=70	4.0% @ Ndes=70
MIX COMPOSITION (GRADATION MIXTURE)	IL 9.5	IL 19.0	IL 9.5
FRICTION AGG	MIXTURE "C"	MIXTURE "C"	MIXTURE "C"

PLAN QUANTITIES FOR BITUMINOUS CONCRETE ITEMS ARE CALCULATED USING A UNIT WEIGHT OF 112 LB / SQ YD / INCH

UTILITIES

ILLINOIS STATE LAW REQUIRES A 48-HOUR NOTICE BE GIVEN TO ALL UTILITIES BEFORE DIGGING. FIELD MARKING OF FACILITIES MAY BE OBTAINED BY CONTACTING J.U.L.I.E. OR FOR NON-MEMBERS, THE UTILITY COMPANY DIRECTLY. AGENCIES KNOWN TO HAVE FACILITIES WITHIN THE PROJECT AREA ARE AS FOLLOWS:

- *AMEREN IP - GAS & ELECTRIC
- *CHARTER COMMUNICATIONS - CABLE TV
- *CLEARWAVE COMMUNICATIONS - PHONE
- *HARRISONVILLE TELEPHONE CO. - PHONE
- *CITY OF COLUMBIA - SEWER & WATER

MEMBERS OF J.U.L.I.E. CALL TOLL FREE (800) 892-0123 OR 811 AND ARE INDICATED BY *
NON-J.U.L.I.E. MEMBERS MUST BE NOTIFIED INDIVIDUALLY.

REFER TO THE "STATUS OF UTILITIES TO BE ADJUSTED" SPECIAL PROVISIONS FOR ADDITIONAL INFORMATION.

TRAFFIC CONTROL

1. FLOURESCENT ORANGE 'ROAD CONSTRUCTION AHEAD' SIGNS (48"X48") SHALL BE PLACED AT EACH END OF THE PROJECT PLUS THE INTERSECTING SIDE ROADS/STREETS AS DIRECTED BY THE ENGINEER. THESE SIGNS SHALL NOT BE MEASURED FOR PAYMENT. COST SHALL BE INCLUDED IN THE VARIOUS TRAFFIC CONTROL PAY ITEMS.
2. THERE WILL BE A MARKED DETOUR ROUTE FOR THIS PROJECT.
3. CHANGEABLE MESSAGE SIGNS SHALL BE ERECTED 14 DAYS IN ADVANCE OF THE ROAD CLOSURE AND DURING THE CLOSURE. THE MESSAGE SHALL BE PER THE DIRECTION OF THE ENGINEER.
4. THE CONTRACTOR SHALL CONTACT ALL EMERGENCY SERVICES, THE US POSTAL SERVICE AND ALL SCHOOL DISTRICTS PRIOR TO THE ROAD CLOSURE.

COMMITMENTS

TREES THREE (3) INCHES OR GREATER IN DIAMETER AT BREAST HEIGHT SHALL NOT BE CLEARED FROM APRIL 1 THROUGH SEPTEMBER 30 OF ANY GIVEN YEAR.

MODEL: D:\64bit\TWM\18-00055-00\18-00055-00-01.dwg; FILE NAME: P:\2020\2020050004_CADD - DWG\14.7_TrafficCADD_Sheet13\130500-01-CH-01.dwg



TWM, INC.
www.twm-inc.com
IL DESIGN FIRM
LICENSE NO:
184-001220

USER NAME	= jstein
DESIGNED	- MLS
DRAWN	- DCL
CHECKED	- JWS
DATE	- MARCH 2023

REVISED	-
REVISED	-
REVISED	-
REVISED	-



CITY OF COLUMBIA

GENERAL NOTES, COMMITMENTS

SCALE: NONE SHEET 1 OF 1 SHEETS STA. TO STA.

MUN	SECTION	COUNTY	TOTAL SHEETS	SHEET NO.
6190	18-00055-00-BR	MONROE	21	2
CONTRACT NO. 97809				
ILLINOIS		FED. AID PROJECT		

CODE NO.	PAY ITEM	UNIT	TOTAL QUANTITY
* 20100500	TREE REMOVAL, ACRES	ACRE	0.25
20200100	EARTH EXCAVATION	CU YD	310
20201200	REMOVAL AND DISPOSAL OF UNSUITABLE MATERIAL	CU YD	362
20400800	FURNISHED EXCAVATION	CU YD	130
20700220	POROUS GRANULAR EMBANKMENT	CU YD	471
21001000	GEOTECHNICAL FABRIC FOR GROUND STABILIZATION	SQ YD	223
25000210	SEEDING, CLASS 2A	ACRE	0.25
25000400	NITROGEN FERTILIZER NUTRIENT	POUND	20
25000500	PHOSPHORUS FERTILIZER NUTRIENT	POUND	20
25000600	POTASSIUM FERTILIZER NUTRIENT	POUND	20
25100115	MULCH, METHOD 2	ACRE	0.25
28000250	TEMPORARY EROSION CONTROL SEEDING	POUND	40
28000305	TEMPORARY DITCH CHECKS	FOOT	27
28000400	PERIMETER EROSION BARRIER	FOOT	365
28000500	INLET AND PIPE PROTECTION	EACH	1
28100107	STONE RIPRAP, CLASS A4	SQ YD	112
28200200	FILTER FABRIC	SQ YD	112
31100100	SUBBASE GRANULAR MATERIAL, TYPE A	TON	321
40201000	AGGREGATE FOR TEMPORARY ACCESS	TON	80
40600275	BITUMINOUS MATERIALS (PRIME COAT)	POUND	961
40600290	BITUMINOUS MATERIALS (TACK COAT)	POUND	242
40600982	HOT-MIX ASPHALT SURFACE REMOVAL - BUTT JOINT	SQ YD	113
40603085	HOT-MIX ASPHALT BINDER COURSE, 1L-19.0, N70	TON	120
40604052	HOT-MIX ASPHALT SURFACE COURSE, 1L-9.5, MIX "C", N70	TON	60
40800050	INCIDENTAL HOT-MIX ASPHALT SURFACING	TON	22
44000200	DRIVEWAY PAVEMENT REMOVAL	SQ YD	133
44000400	GUTTER REMOVAL	FOOT	240
48100100	AGGREGATE SHOULDERS, TYPE A	TON	30
50100100	REMOVAL OF EXISTING STRUCTURES	EACH	1
51500100	NAME PLATES	EACH	1

CODE NO.	PAY ITEM	UNIT	TOTAL QUANTITY
54001001	BOX CULVERT END SECTIONS, CULVERT NO. 1	EACH	2
54010908	PRECAST CONCRETE BOX CULVERTS 9' X 8'	FOOT	241
54210024	PIPE CULVERTS, CLASS D, TYPE 1 24" (TEMPORARY)	FOOT	45
60602500	CONCRETE GUTTER, TYPE A	FOOT	57
67100100	MOBILIZATION	L SUM	1
70107025	CHANGEABLE MESSAGE SIGN	CAL DA	210
* 78000200	THERMOPLASTIC PAVEMENT MARKING - LINE 4"	FOOT	520
* 78000600	THERMOPLASTIC PAVEMENT MARKING - LINE 12"	FOOT	34
Z0016702	DETOUR SIGNING	L SUM	1
Z0054402	ROCK FILL - REPLACEMENT	CU YD	362
* X5510310	SANITARY SEWER REMOVAL 10"	FOOT	100
* X5610712	WATER MAIN REMOVAL, 12"	FOOT	100
X5810103	MEMBRANE WATERPROOFING SYSTEM FOR BURIED STRUCTURES	SQ YD	303
* X6026050	SANITARY MANHOLES TO BE ADJUSTED	EACH	2
X6060032	CONCRETE GUTTER TRANSITION	FOOT	40
X6060097	CLASS 51 CONCRETE (OUTLET), SPECIAL	CU YD	5
X7010216	TRAFFIC CONTROL AND PROTECTION, (SPECIAL)	L SUM	1
# Z0076600	TRAINEES	HOUR	500
# Z0076604	TRAINEES TRAINING PROGRAM GRADUATE	HOUR	500

* SPECIALTY ITEMS
0042

MODEL DRAWING
 FILE NAME: P:\2020\005554\CADD - REVISED - 11-28-2023\11-28-2023 - sheet\005554.dwg
 DATE: 11-28-2023



TWM, INC.
 11117 FINN INC. CO.
 IL DESIGN FIRM
 LICENSE NO: 184-001220

USER NAME = jscels
 DESIGNED - MLS
 DRAWN - DCL
 CHECKED - JWS
 DATE - MARCH 2023
 PLOT SCALE = 15.0000 ' 1" = 11-28-2023
 PLOT DATE = 11-28-2023

DESIGNED - MLS
 DRAWN - DCL
 CHECKED - JWS
 DATE - MARCH 2023

REVISED -
 REVISED -
 REVISED -
 REVISED -



CITY OF COLUMBIA

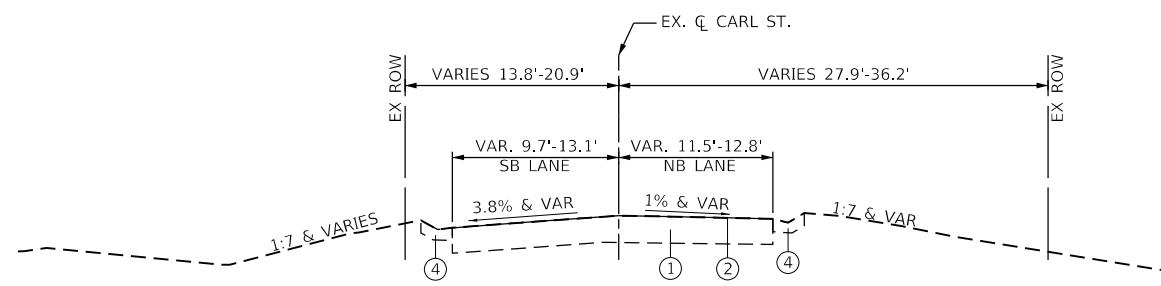
SUMMARY OF QUANTITIES

MUN	SECTION	COUNTY	TOTAL SHEETS	SHEET NO.
6190	18-00055-00-BR	MONROE	21	3
			CONTRACT NO. 97809	
ILLINOIS FED AID PROJECT				

SCALE: HTS | SHEET 1 OF 3 SHEETS | STA. TO STA.

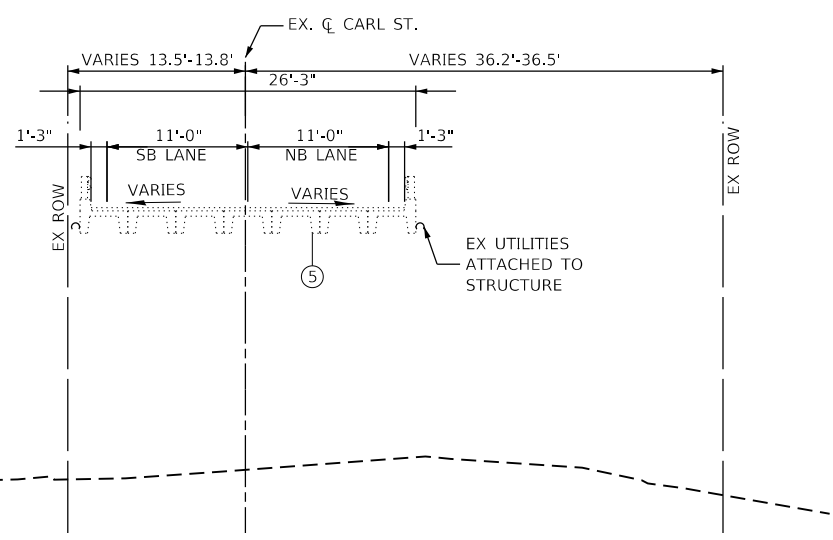
LEGEND

- ① EX AGGREGATE BASE
- ② EX BITUMINOUS SURFACE TREATMENT
- ③ EX AGGREGATE/EARTH SHLDR
- ④ EX GUTTER
- ⑤ EX SN 067-6009
- ⑥ PR HOT-MIX ASPHALT SURFACE COURSE, 2"
- ⑦ PR HOT-MIX ASPHALT BINDER COURSE, 5"
- ⑧ RESERVED
- ⑨ PR SUBBASE GRANULAR MATERIAL, TYPE A, 12"
- ⑩ PR AGGREGATE SHOULDERS, TYPE A, 6"
- ⑪ PR GUTTER, TYPE A
- ⑫ PR SN 067-6014



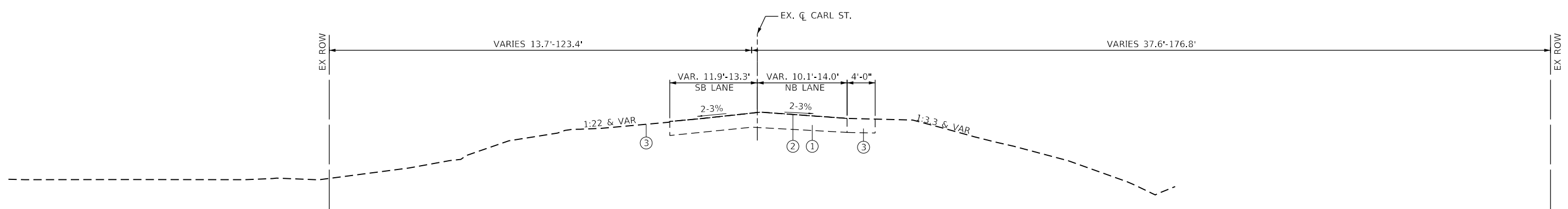
EX. TYPICAL SECTION

STA. 10+40.00 TO STA. 11+44.29



EX. TYPICAL SECTION

EX. STRUCTURE 067-6009
STA. 11+44.29 TO STA. 11+83.16



TYPICAL SECTION

STA. 11+83.16 TO STA. 12+50.00

MODEL: D:\p1\11... FILE NAME: P:\2022\05\0004_CADD...DWG\11.7_Tran\CADD_Sheets\300506-shltyp11a.dgn



TWM, INC.
www.twm-inc.com
IL DESIGN FIRM LICENSE NO: 184-001220

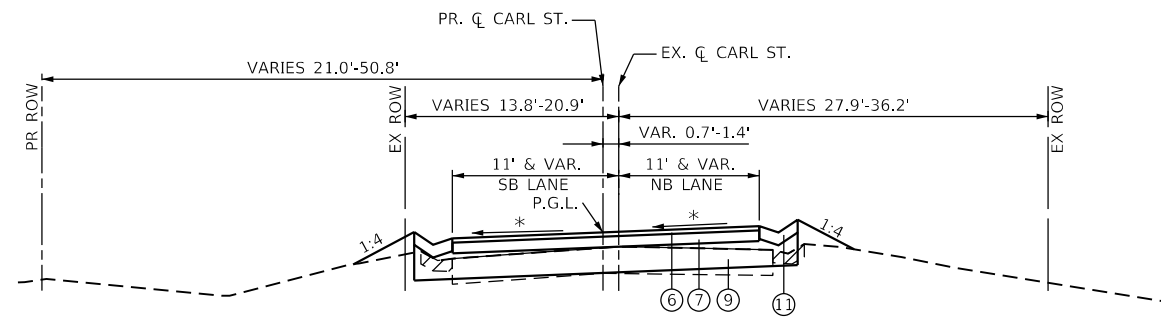
USER NAME = jstein	DESIGNED - MLS	REVISED -
PLOT SCALE = 15.0000 ' / in.	DRAWN - DCL	REVISED -
PLOT DATE = 3/27/2023	CHECKED - JWS	REVISED -
	DATE - MARCH 2023	REVISED -



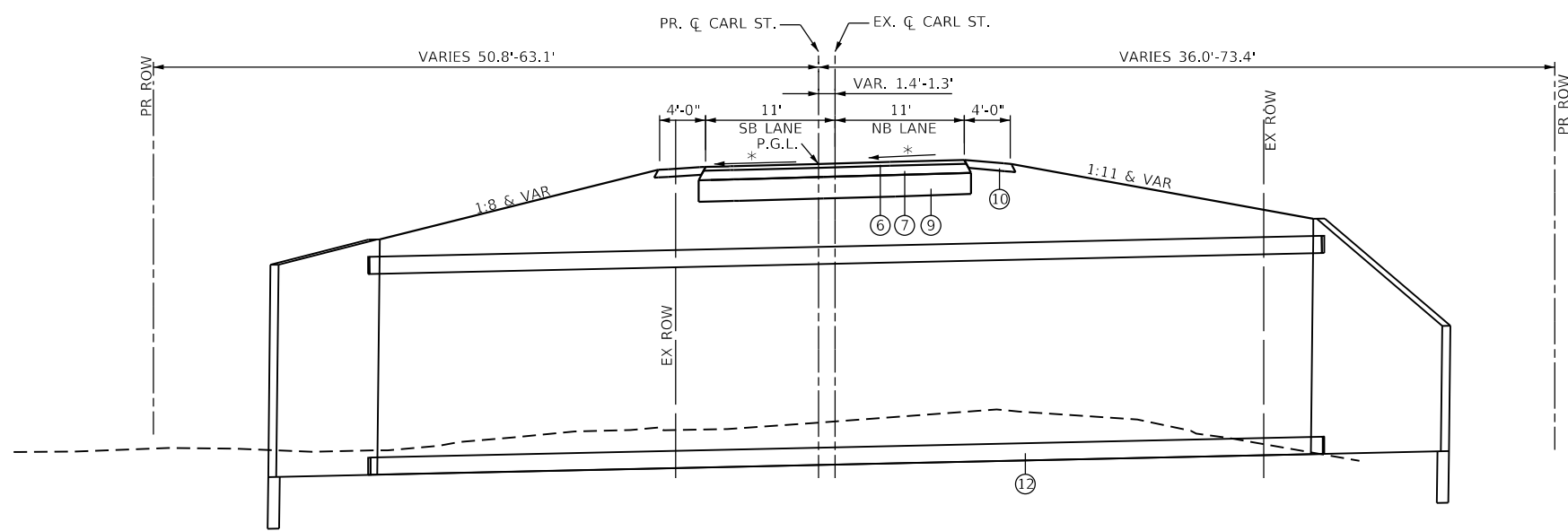
CITY OF COLUMBIA

EXISTING TYPICAL SECTIONS
SCALE: NTS SHEET 1 OF 2 SHEETS STA. TO STA.

MUN	SECTION	COUNTY	TOTAL SHEETS	SHEET NO.
6190	18-00055-00-BR	MONROE	21	4
ILLINOIS FED. AID PROJECT			CONTRACT NO. 97809	

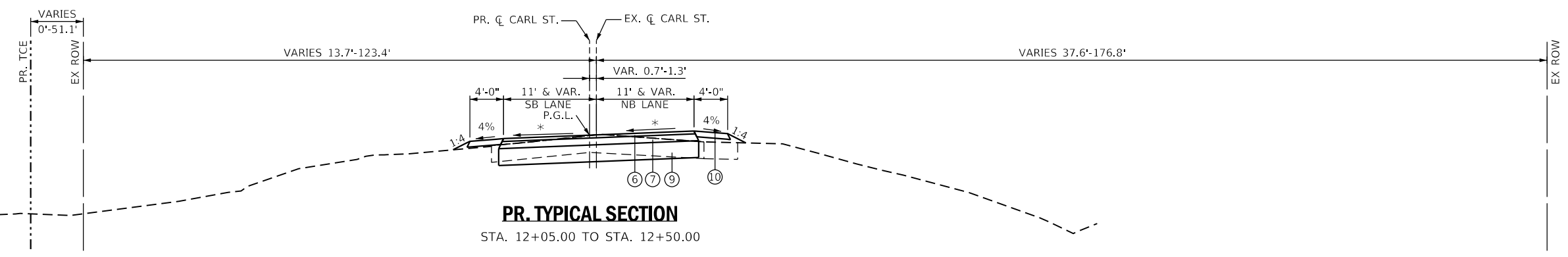


- LEGEND**
- ① EX AGGREGATE BASE
 - ② EX BITUMINOUS SURFACE TREATMENT
 - ③ EX AGGREGATE/EARTH SHLDR
 - ④ EX GUTTER
 - ⑤ EX SN 067-6009
 - ⑥ PR HOT-MIX ASPHALT SURFACE COURSE, 2"
 - ⑦ PR HOT-MIX ASPHALT BINDER COURSE, 5"
 - ⑧ RESERVED
 - ⑨ PR SUBBASE GRANULAR MATERIAL, TYPE A, 12"
 - ⑩ PR AGGREGATE SHOULDERS, TYPE A, 6"
 - ⑪ PR GUTTER, TYPE A
 - ⑫ PR SN 067-6014



SUPERELEVATION TABLE

PR. STA.	PR. CL. CARL ST.	EX. CL. CARL ST.
10+40	-5.0% (M.E.)	-0.8% (M.E.)
10+88	-2.0%	+2.0%
11+86	-2.0%	+2.0%
12+50	-2% (M.E.)	-2% (M.E.)



MODEL: D:\d\c\11
 FILE NAME: P:\2022\20250004_CADD - DWG\4.7_Tran\CADD_Sheets\300506-shc-tp16a.dgn

	TWM, INC. <small>www.twm-inc.com</small>	USER NAME = jstein	DESIGNED - MLS	REVISED -		CITY OF COLUMBIA	PROPOSED TYPICAL SECTIONS	MUN 6190	SECTION 18-00055-00-BR	COUNTY MONROE	TOTAL SHEETS 21	SHEET NO. 5
	IL DESIGN FIRM LICENSE NO: 184-001220	PLOT SCALE = 1/16" = 15.0000' / in.	CHECKED - JWS	REVISED -				SCALE: NTS	SHEET 2 OF 2 SHEETS	STA. TO STA.	CONTRACT NO. 97809	
		PLOT DATE = 3/27/2023	DATE - MARCH 2023	REVISED -					ILLINOIS FED. AID PROJECT			

PAVING SCHEDULE										
LOCATION				INCIDENTAL HOT-MIX ASPHALT SURFACING	SUBBASE GRANULAR MATERIAL, TYPE A *	HOT-MIX ASPHALT BINDER COURSE, IL-19.0, N70	HOT-MIX ASPHALT SURFACE COURSE, IL-9.5, MIX "C", N70	BITUMINOUS MATERIALS (PRIME COAT)	BITUMINOUS MATERIALS (TACK COAT)	AGGREGATE SHOULDERS, TYPE A
STA.	TO	STA.	NOTES	TON	TON	TON	TON	POUND	POUND	TON
CARL ST.										
10+40.00	TO	10+60.00					6.2		25.0	
10+60.00	TO	11+20.00			109.7	43.9	17.6	352.5	70.5	30.3
11+20.00	TO	12+05.00	3" @ CE 12+04.45 LT	22.3	145.4	58.2	23.3	467.5	93.5	
12+05.00	TO	12+30.00			43.8	17.5	7.0	140.6	28.1	
12+30.00	TO	12+50.00					6.1		24.5	
TOTAL:				22	299	120	60	961	242	30

*SEE GUTTER SCHEDULE FOR ADDITIONAL QUANTITY

EARTHWORK SCHEDULE										
LOCATION					STRUCTURE EXCAVATION	EARTH EXCAVATION	FOR INFORMATION ONLY			FURNISHED EXCAVATION
							EARTH EXCAVATION ADJUSTED FOR 25% SHRINKAGE	EMBANKMENT	BALANCE WASTE (+) SHORTAGE (-)	
LOCATION	STA.	TO	STA.	NOTES	CU YD	CU YD	CU YD	CU YD	CU YD	CU YD
CARL ST	10+60.00	TO	12+30.00			274	206	325	-120	120
RIRO		TO				37	28	37	-9	9
SN 067-6014		TO			990				0	0
TOTAL :					990	311	233	362	-129	129
PAY TOTAL :					*	310				130

* STRUCTURE EXCAVATION IS INCLUDED IN THE COST OF PRECAST CONCRETE BOX CULVERTS
ASSUME STRUCTURE EXCAVATION IS NOT SUITABLE FOR EMBANKMENT

SEEDING SCHEDULE								
LOCATION			SEEDING, CLASS 2A	NITROGEN FERTILIZER NUTRIENT	PHOSPHORUS FERTILIZER NUTRIENT	POTASSIUM FERTILIZER NUTRIENT	MULCH, METHOD 2	TEMPORARY EROSION CONTROL SEEDING
STA.	TO	STA.	ACRE	POUND	POUND	POUND	ACRE	POUND
CARL ST.								
10+40.00	TO	12+50.00	0.083	7.5	7.5	7.5	0.083	16.6
10+40.00	TO	12+50.00	0.057	5.1	5.1	5.1	0.057	11.4
SUB-TOTAL :			0.140	12.6	12.6	12.6	0.140	28.0
IL 3								
RIRO			0.046	4.1	4.1	4.1	0.046	9.2
SUB-TOTAL :			0.046	4.1	4.1	4.1	0.046	9.2
TOTAL :			0.186	17	17	17	0.186	37
PAY TOTAL :			0.25	20	20	20	0.250	40

REMOVAL SCHEDULE					
LOCATION			DRIVEWAY PAVEMENT REMOVAL	HMA SURFACE REMOVAL - BUTT JOINT	GUTTER REMOVAL
STATION	TO	STATION	SQ YD	FOOT	FOOT
CARL ST.					
10+20.00	TO	10+40.00		56.0	
10+40.00	TO	11+50.00	133.0		120.0
10+40.00	TO	11+50.00			120.0
12+30.00	TO	12+50.00		56.8	
TOTAL:			133	113	240

MODEL Dwg: IL 18-0005-00-BR-CADD - DWG14.7_TanriCADD_Sheet1300500-Phc-schedule.dgn



TWM, INC.
www.twm-inc.com
IL DESIGN FIRM
LICENSE NO:
184-001220

USER NAME = jstein
DESIGNED - MLS
DRAWN - DCL
CHECKED - JWS
DATE - MARCH 2023

REVISED -
REVISED -
REVISED -
REVISED -



CITY OF COLUMBIA

SCHEDULES OF QUANTITIES
SCALE: NTS SHEET 1 OF 2 SHEETS STA. TO STA.

MUN	SECTION	COUNTY	TOTAL SHEETS	SHEET NO.
6190	18-00055-00-BR	MONROE	21	6
CONTRACT NO. 97809			ILLINOIS FED. AID PROJECT	

TEMPORARY RIGHT-IN RIGHT-OUT SCHEDULE			
LOCATION	AGGREGATE FOR TEMPORARY ACCESS	PIPE CULVERTS, CLASS D, TYPE 1, 24" (TEMPORARY)	SIGN PANELS, TYPE 1
STATION	TON	FOOT	SQ FT
IL RT 3			
TEMP ENT TO SHADY CREEK	80	45	9
TOTAL :	80	45	*

* INCLUDED IN THE COST OF TRAFFIC CONTROL AND PROTECTION, (SPECIAL)

PERIMETER EROSION BARRIER SCHEDULE				
LOCATION				PERIMETER EROSION BARRIER
STATION	TO	STATION		FOOT
CARL ST.				
10+60.00	TO	11+20.00	LT	60.0
10+40.00	TO	11+50.00	RT	115.0
11+20.00	TO	11+80.00	LT	70.0
11+50.00	TO	12+40.00	Rt	120.0
TOTAL :				365

INLET AND PIPE PROTECTION SCHEDULE			
STATION		INLET AND PIPE PROTECTION	
EACH			
IL 3			
RIRO	RT	1	
TOTAL :			1

TEMPORARY DITCH CHECK SCHEDULE				
LOCATION		TEMPORARY DITCH CHECKS		
STATION	LT/RT	EACH	FOOT	
CARL ST.				
11+15.00	LT	1.0	9.0	
11+48.00	RT	1.0	9.0	
11+94.00	RT	1.0	9.0	
TOTAL:			27	

RIPRAP SCHEDULE				
LOCATION			STONE RIPRAP, CLASS A4	FILTER FABRIC
STATION			SQ YD	SQ YD
CARL ST.				
11+02.00	LT	SW QUAD	11.9	11.9
11+25.00	RT	SE QUAD	25.0	25.0
12+10.00	RT	NE QUAD	11.1	11.1
			SN 067-6014	64.0
TOTAL:			112	112

TREE REMOVAL SCHEDULE		
LOCATION		TREE REMOVAL, ACRE
STA.	LT/RT	ACRE
CARL ST.		
11+60.00	RT	0.1
11+60.00	LT	0.1
TOTAL:		0.2
PAY TOTAL:		0.25

GUTTER SCHEDULE								
LOCATION				SUBBASE GRANULAR MATERIAL, TYPE A *	CONCRETE GUTTER TRANSITION	CONCRETE GUTTER, TYPE A	CLASS SI CONCRETE (OUTLET), SPECIAL	
STA.	TO	STA.	LT/RT	TON	FOOT	FOOT	CU YD	
CARL ST.								
10+40.00	TO	10+75.00	LT	8.2	20.0	15.0	2.4	
10+40.00	TO	11+00.00	RT	14.0	20.0	42.0	2.4	
TOTAL:				22	40	57	5	

*SEE PAVING SCHEDULE FOR ADDITIONAL QUANTITY

MODEL Dwg: 11
FILE NAME: P:\2022\050004_CADD - DWG\11.7_Tran\CADD_Sheets\110500-ph-schedule.dgn



TWM, INC.
www.twm-inc.com
IL DESIGN FIRM LICENSE NO: 184-001220
USER NAME = jstein
PLOT SCALE = 15.0000 ' / in.
PLOT DATE = 3/27/2023

DESIGNED - MLS
DRAWN - DCL
CHECKED - JWS
DATE - MARCH 2023
REVISED -
REVISED -
REVISED -
REVISED -



CITY OF COLUMBIA

SCHEDULES OF QUANTITIES

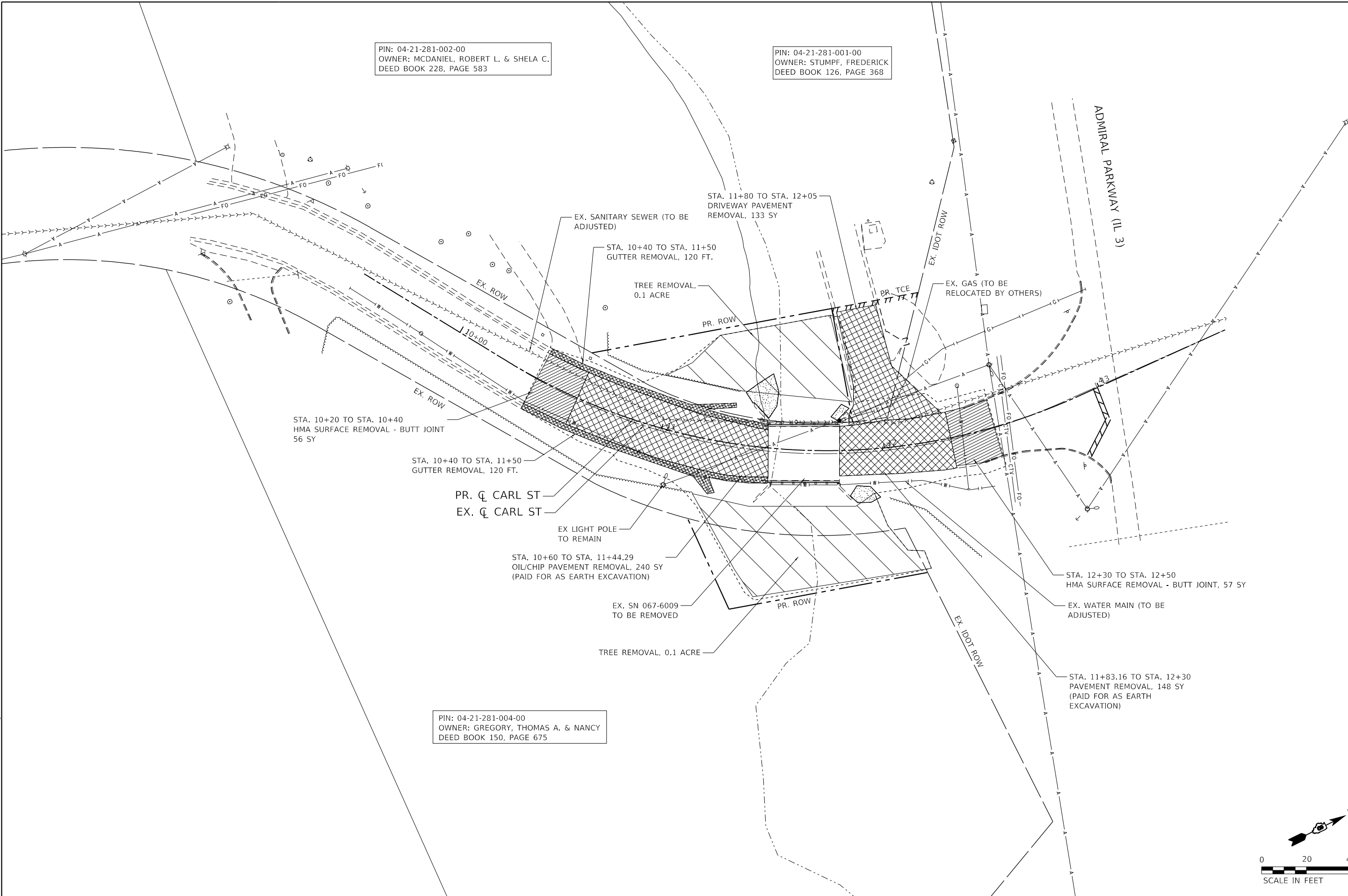
SCALE: NTS SHEET 2 OF 2 SHEETS STA. TO STA.

MUN	SECTION	COUNTY	TOTAL SHEETS	SHEET NO.
6190	18-00055-00-BR	MONROE	21	7
CONTRACT NO. 97809				
ILLINOIS FED. AID PROJECT				

PIN: 04-21-281-002-00
 OWNER: MCDANIEL, ROBERT L. & SHELA C.
 DEED BOOK 228, PAGE 583

PIN: 04-21-281-001-00
 OWNER: STUMPF, FREDERICK
 DEED BOOK 126, PAGE 368

PIN: 04-21-281-004-00
 OWNER: GREGORY, THOMAS A. & NANCY
 DEED BOOK 150, PAGE 675



MODEL: D:\cadd\11\2023\03\04\04\CADD - DWG\4.7_Tran\CADD_Sheet13\0506-ph-rem.dgn
 FILE NAME: P:\2023\03\04\04\CADD - DWG\4.7_Tran\CADD_Sheet13\0506-ph-rem.dgn



USER NAME = jstein	DESIGNED - MLS	REVISED -
PLOT SCALE = 40,0000 ' / in.	DRAWN - DCL	REVISED -
PLOT DATE = 3/27/2023	CHECKED - JWS	REVISED -
	DATE - MARCH 2023	REVISED -



CITY OF COLUMBIA

REMOVAL PLAN

SCALE: 1" = 20' SHEET 1 OF 1 SHEETS STA. TO STA.

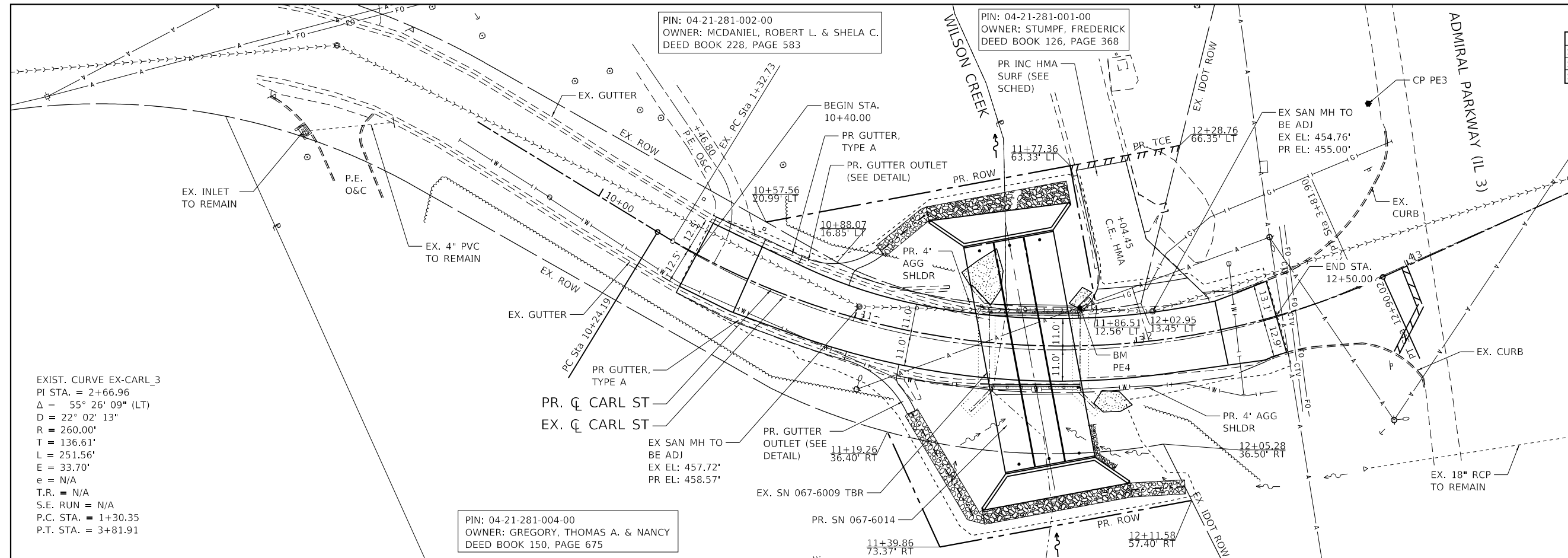
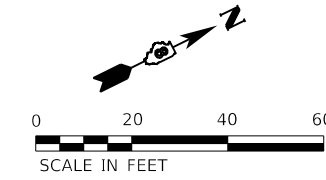
MUN	SECTION	COUNTY	TOTAL SHEETS	SHEET NO.
6190	18-00055-00-BR	MONROE	21	8
CONTRACT NO. 97809				
ILLINOIS FED. AID PROJECT				

PROPOSED ALIGNMENT

PI STATION	NORTHING	EASTING
STA. 9+50.00	644,858.385	2,285,751.610
STA. 11+68.71	644,975.193	2,285,936.518
STA. 13+61.71	645,191.274	2,285,943.788

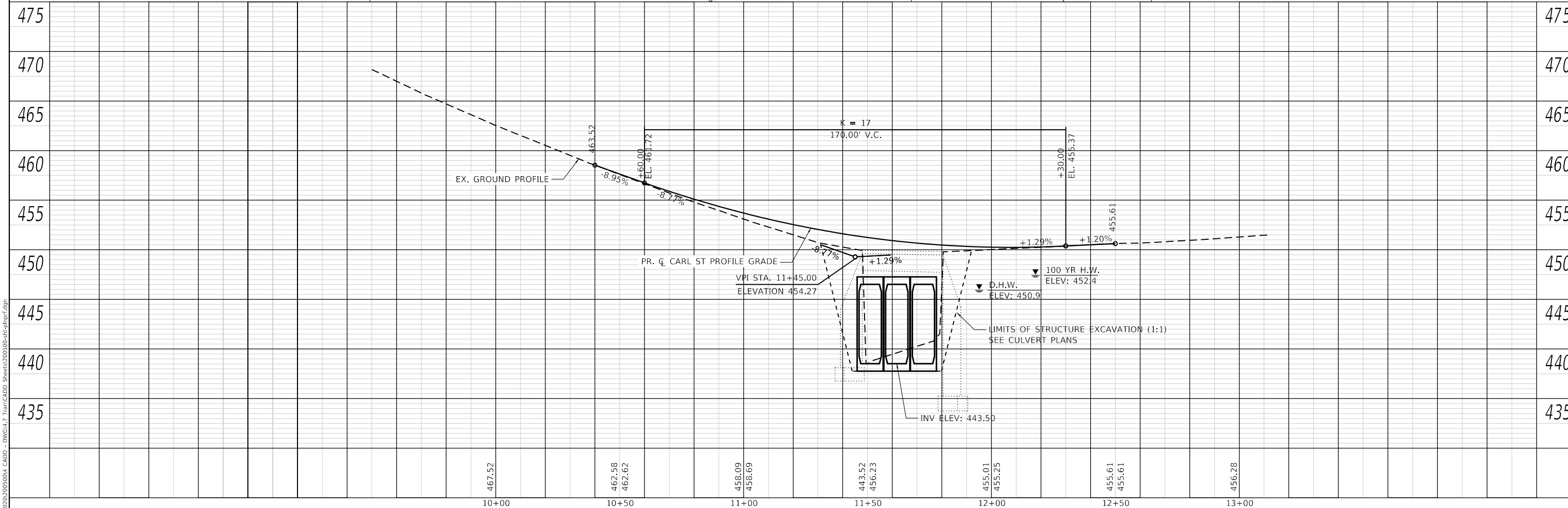
PROP. CURVE PRCL-CARL-ALT_3
 PI STA. = 11+68.71
 $\Delta = 55^\circ 47' 31''$ (LT)
 $D = 20^\circ 59' 15''$
 $R = 273.00'$
 $T = 144.52'$
 $L = 265.83'$
 $E = 35.89'$
 $e = 2\%$
 $T.R. = 24'$
 $S.E. RUN = 32'$
 $P.C. STA. = 10+24.19$
 $P.T. STA. = 12+90.02$

CP PE1	CP PE3
N 645,306.641	N 645,141.984
E 2,285,377.759	E 2,285,884.531
Z 452.060	Z 455.387
CP PE2	BM PE4
N 645,294.141	N 645,019.301
E 2,286,456.293	E 2,285,904.097
Z 456.730	Z 455.189



PLAN	DATE
SURVEYED	
PLOTTED	
ALIGNMENT CHECKED	
NOTE BOOK NO.	
CADD FILE NAME	

PROFILE	DATE
SURVEYED	
PLOTTED	
GRADES CHECKED	
NOTE BOOK NO.	
STRUCTURE NOTATIONS CHECKED	



MODEL: Default
 FILE NAME: P:\2022\05\00\00\00\CADD - DWG\4-17 From CADD Sheets\050000-00-00-00-00-00.dgn



TWM, INC.
 www.twm-inc.com
 ILLINOIS DESIGN FIRM LICENSE NO: 184-001220

USER NAME = jstein
 DESIGNED - MLS
 DRAWN - DCL
 CHECKED - JWS
 DATE - MARCH 2023

REVISIONS
 REVISED -
 REVISED -
 REVISED -
 REVISED -



CITY OF COLUMBIA

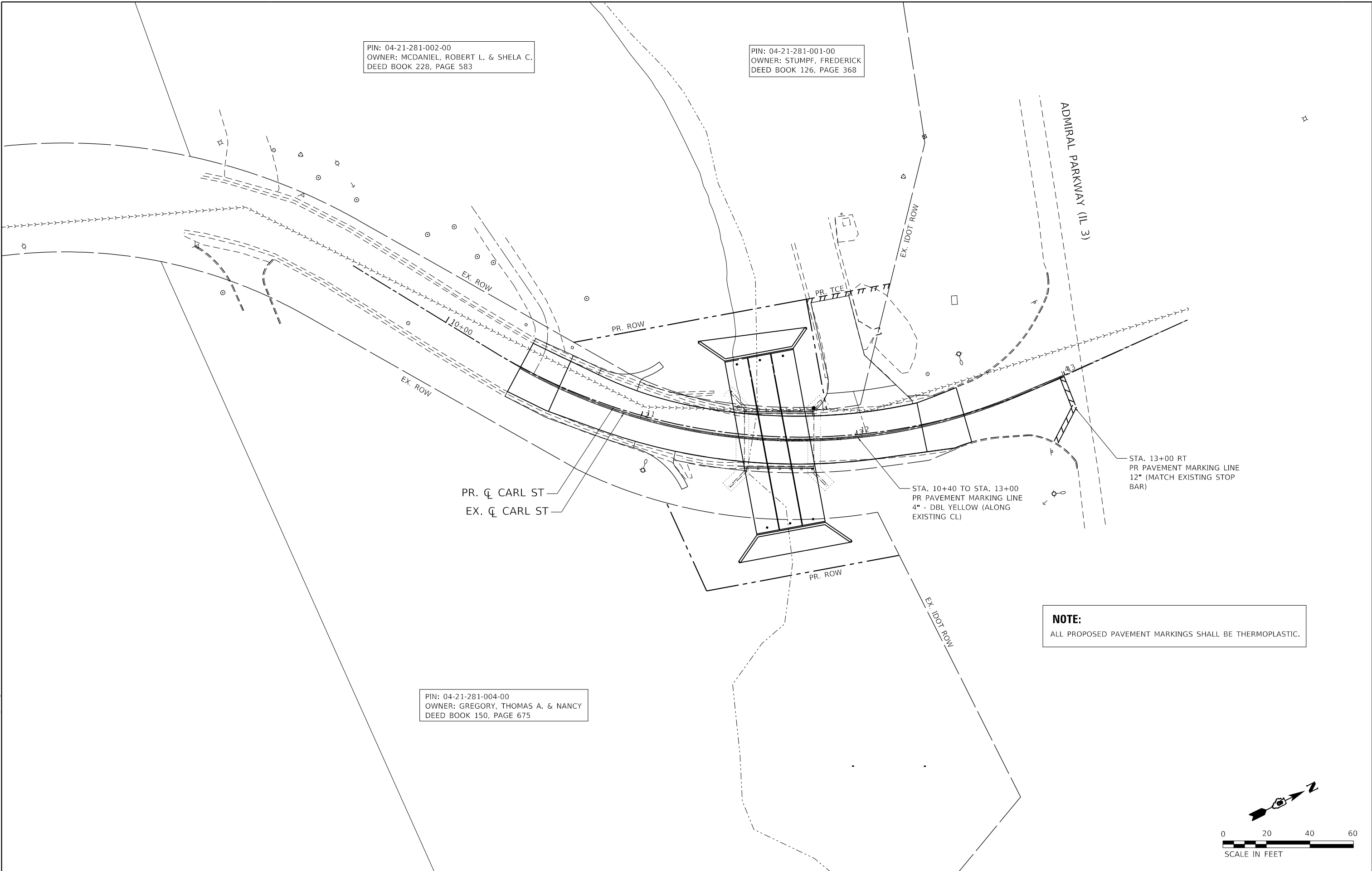
PLAN AND PROFILE
 SCALE: 1" = 20'
 SHEET 1 OF 1 SHEETS
 STA. TO STA.

MUN	SECTION	COUNTY	TOTAL SHEETS	SHEET NO.
6190	18-00055-00-BR	MONROE	21	9
CONTRACT NO. 97809			ILLINOIS FED. AID PROJECT	

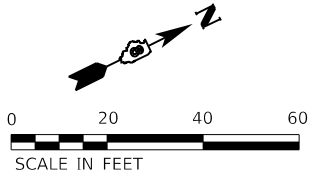
PIN: 04-21-281-002-00
 OWNER: MCDANIEL, ROBERT L. & SHELA C.
 DEED BOOK 228, PAGE 583

PIN: 04-21-281-001-00
 OWNER: STUMPF, FREDERICK
 DEED BOOK 126, PAGE 368

PIN: 04-21-281-004-00
 OWNER: GREGORY, THOMAS A. & NANCY
 DEED BOOK 150, PAGE 675



NOTE:
 ALL PROPOSED PAVEMENT MARKINGS SHALL BE THERMOPLASTIC.



MODEL: Dwg.dgn
 FILE NAME: P:\2023\2023052004_CADD - DWG\4.7_Tran\CADD_Sheet1300500-00-00-00.dgn



TWM, INC.
 www.twm-inc.com
 IL DESIGN FIRM
 LICENSE NO:
 184-001220

USER NAME	= jstein
DESIGNED	- MLS
DRAWN	- DCL
CHECKED	- JWS
DATE	- MARCH 2023

REVISED	-
REVISED	-
REVISED	-
REVISED	-

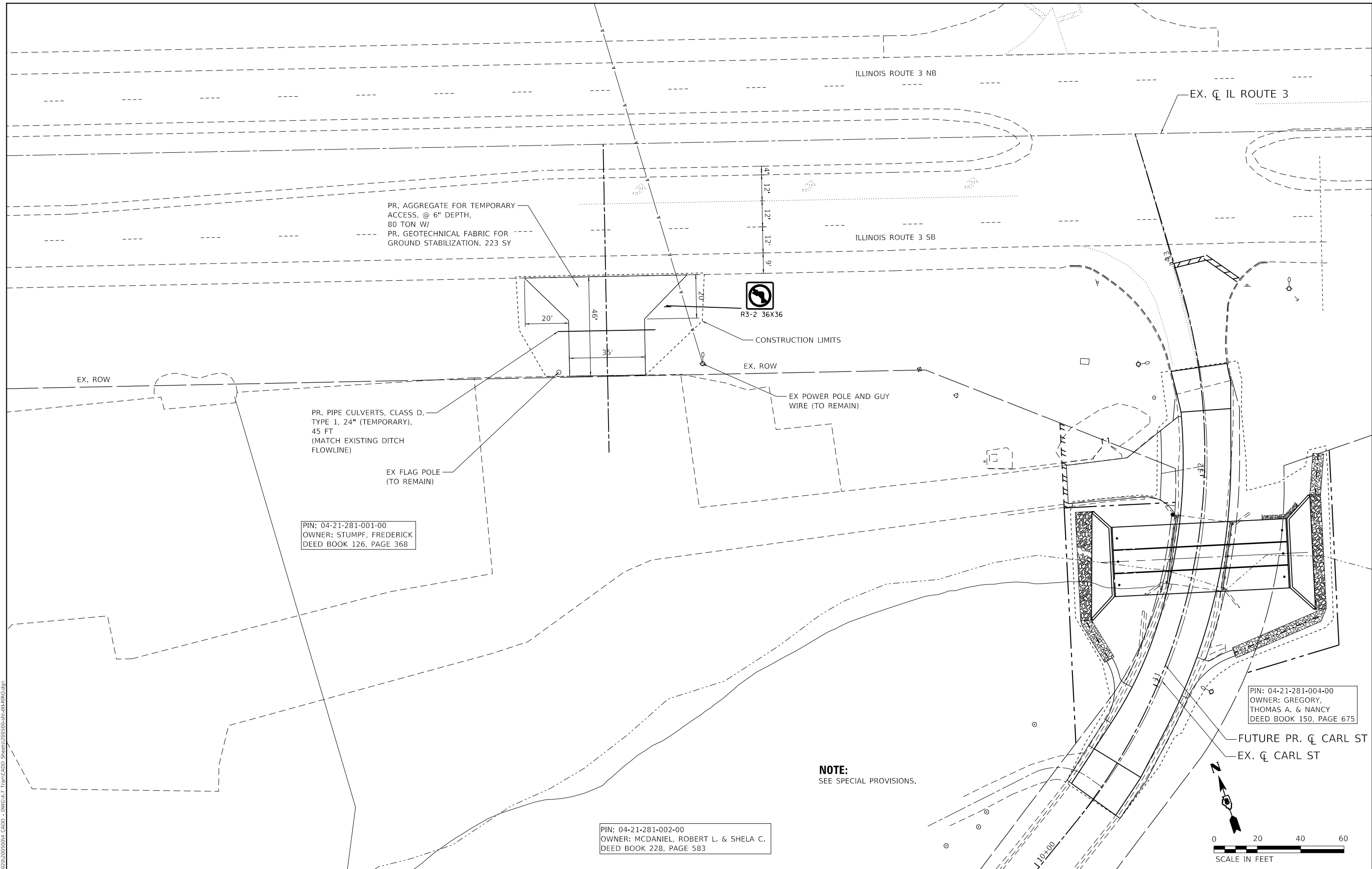


CITY OF COLUMBIA

PAVEMENT MARKING PLAN

SCALE: 1" = 20' SHEET 1 OF 1 SHEETS STA. TO STA.

MUN	SECTION	COUNTY	TOTAL SHEETS	SHEET NO.
6190	18-00055-00-BR	MONROE	21	11
CONTRACT NO. 97809			ILLINOIS FED. AID PROJECT	



MODEL: Dwg1.rvt
 FILE NAME: P:\2020\2020050004_CADD - DWG\4.7_Tran\CADD_Sheet1300300-00-01-01-01-01.dwg



TWM, INC.
 www.twm-inc.com
 IL DESIGN FIRM
 LICENSE NO: 184-001220

USER NAME = jstein
 PLOT SCALE = 40,0000 ' / in.
 PLOT DATE = 3/27/2023

DESIGNED -	MLS	REVISED -	
DRAWN -	DCL	REVISED -	
CHECKED -	JWS	REVISED -	
DATE -	MARCH 2023	REVISED -	



CITY OF COLUMBIA

TEMPORARY RIGHT-IN RIGHT-OUT ENTRANCE

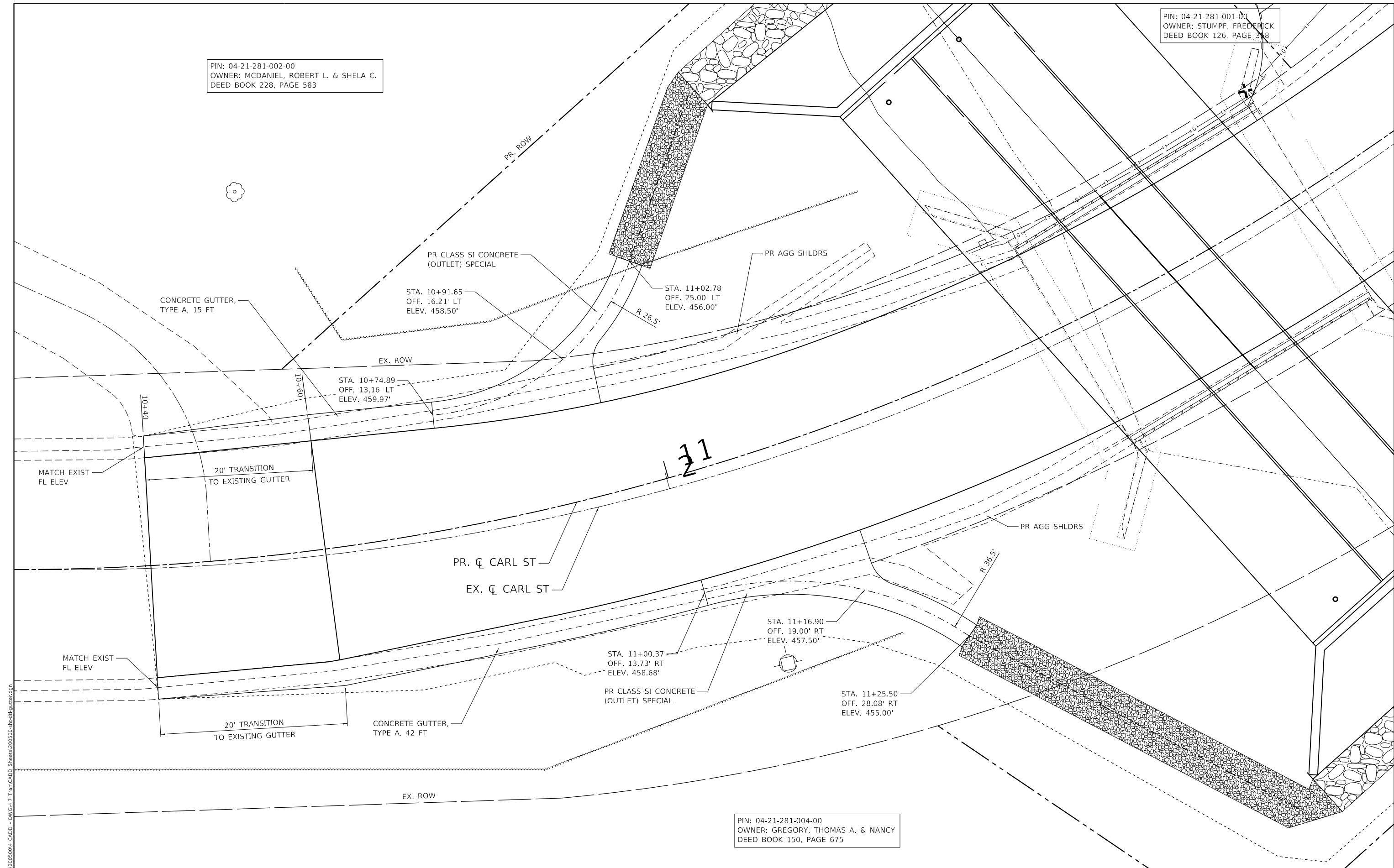
SCALE: 1" = 20' SHEET 1 OF 1 SHEETS STA. TO STA.

MUN	SECTION	COUNTY	TOTAL SHEETS	SHEET NO.
6190	18-00055-00-BR	MONROE	21	13
			CONTRACT NO. 97809	
		ILLINOIS	FED. AID PROJECT	

PIN: 04-21-281-001-00
 OWNER: STUMPF, FREDERICK
 DEED BOOK 126, PAGE 368

PIN: 04-21-281-002-00
 OWNER: MCDANIEL, ROBERT L. & SHELA C.
 DEED BOOK 228, PAGE 583

PIN: 04-21-281-004-00
 OWNER: GREGORY, THOMAS A. & NANCY
 DEED BOOK 150, PAGE 675



MODEL: Dwg.dwg
 FILE NAME: P:\2020\2025\004_CADD - DWG\4.7_Tran\CADD_Sheet\130505-Pr-Gutter.dwg



TWM, INC.
 www.twm-inc.com
 IL DESIGN FIRM
 LICENSE NO:
 184-001220

USER NAME = jstein
 PLOT SCALE = 10.0000 ' / in.
 PLOT DATE = 3/27/2023

DESIGNED - MLS
 DRAWN - DCL
 CHECKED - JWS
 DATE - MARCH 2023

REVISED -
 REVISED -
 REVISED -
 REVISED -



CITY OF COLUMBIA
GUTTER OUTLET DETAIL
 SCALE: 1" = 5'
 SHEET 1 OF 1 SHEETS
 STA. TO STA.

MUN	SECTION	COUNTY	TOTAL SHEETS	SHEET NO.
6190	18-00055-00-BR	MONROE	21	14
CONTRACT NO. 97809				
ILLINOIS FED. AID PROJECT				

WILSON CREEK
 BUILT BY
 CITY OF COLUMBIA
 SEC. 18-00055-00-BR
 STA. 11+61.81
 STR. NO. 067-6014 LOADING HL-93

NAME PLATE
 See Std. 515001

GENERAL NOTES

The design fill height for this box is 2'-0" (min.) and 5'-0" (max.) based on future proposed conditions. The precast box culvert sections shall conform to the requirements of ASTM C 1577.

Drain holes shall be provided on exterior culvert walls for each precast box segment with a clear rise greater than 3 ft. The drain hole shall be located within 1/3 of the clear rise of the box culvert, shall not intercept the haunch, and shall conform to the requirements of Article 503.11 of the Standard Specification.

Nonwoven geotextile fabric shall conform to the requirements of Art. 1080.01 of the Standard Specifications. The minimum weight of the fabric shall be 6 ounces per square yard.

Precast concrete box culverts and box culvert end sections shall be backfilled with Porous Granular Embankment in the required excavation areas on the sides of the box culvert from the top of the box culvert to the bottom of the box culvert. This area of PGE is included in the Porous Granular Embankment pay item. The 6-inch thick layer of porous granular material required under the precast concrete box culvert, according to Section 540.06 of the standard specifications, shall also apply to the end sections. Cost of this porous granular material will not be paid for separately but shall be included in the unit price of the work for which it is required.

Box Culvert End Sections shall be constructed according to the requirements of Section 540 of the Standard Specifications except as modified herein. End sections will be paid for at the contract unit price per each for Box Culvert End Sections.

Box section dimensions, materials, and reinforcement details for Box Culvert End Sections shall be according to the requirements for ASTM C 1577 as required for the design of the portion of the culvert within the limits of Precast Concrete Box Culverts except as modified herein.

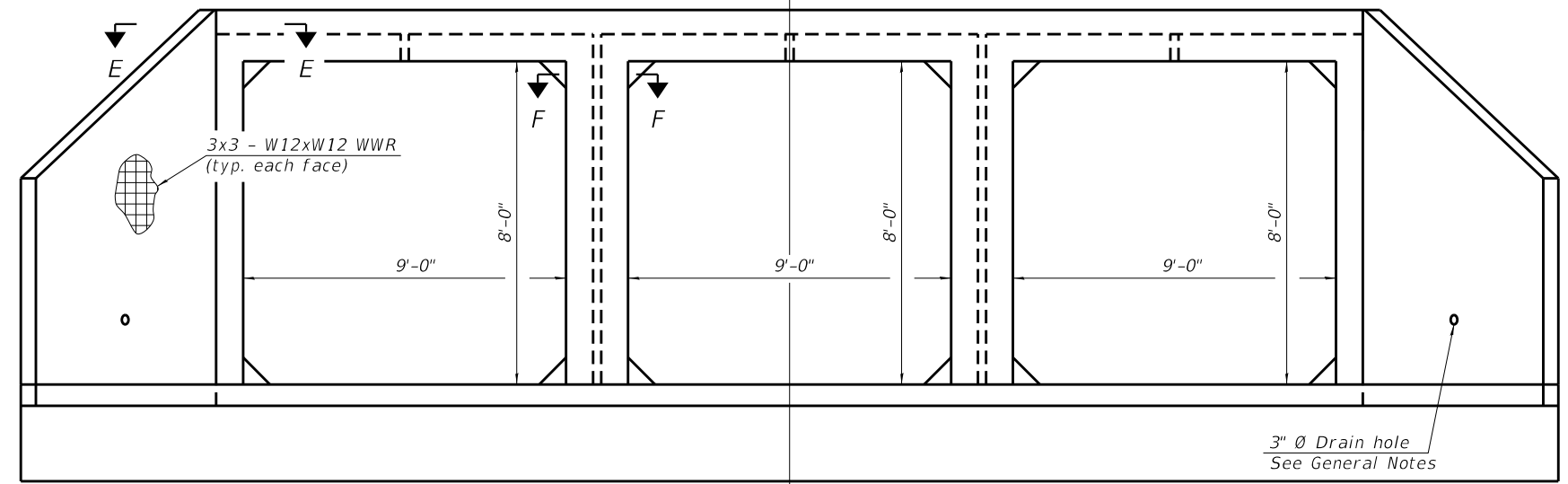
The details contained herein are for constructing the end sections using cast-in-place (CIP) construction. The Contractor may propose to furnish the end sections using precast construction methods and the end sections may consist of multiple precast concrete segments. The Contractor shall be responsible for determining all details associated with the precast option including any strengthening or stiffening provisions necessary for handling the precast segments. Conceptual details followed by shop drawings and design calculations sealed by an Illinois Licensed Structural Engineer shall be submitted to the Engineer for review and approval. Elements of the precast option shall at a minimum result in the same wingwall geometry and not have a thickness less than that detailed herein. The option to construct the end sections using precast construction methods shall be at no additional charge.

Shop drawings that detail slab thickness and reinforcement layout for the Box Culvert End Sections shall be provided to the Engineer for review and approval. Reinforcement bars not detailed herein shall be detailed with a clear distance at the end of the reinforcement not less than 1/2" nor more than 2".

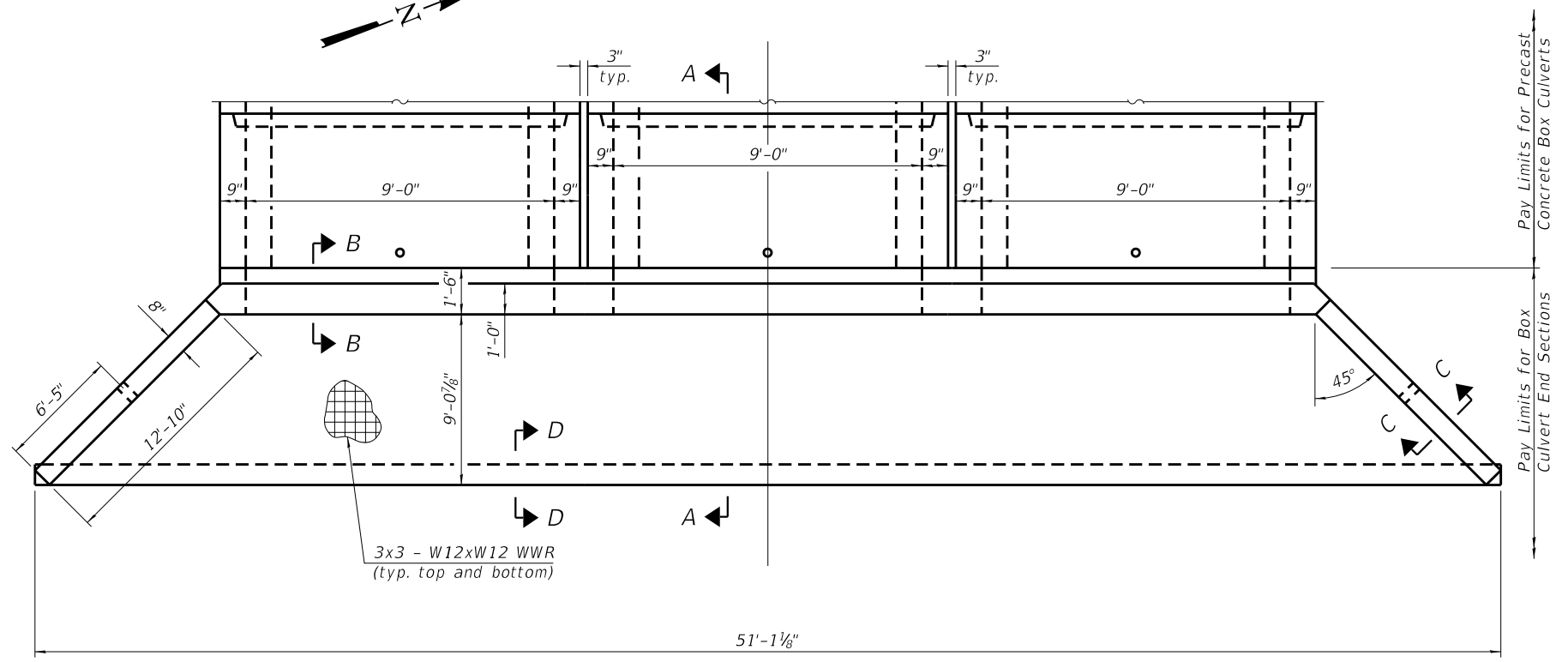
The contractor may use reinforcement bars in lieu of welded wire reinforcement (WWR). Reinforcement bars shall be limited to the sizes of #3 through #5 bars, a maximum spacing of the lesser of 8" or the member thickness, and shall result in an area of reinforcement equal to or greater than that provided by the WWR. Minimum lap lengths detailed herein are applicable to WWR and reinforcement bars.

Reinforcement (circumferential and longitudinal) in the precast concrete box culvert segments immediately adjacent to the box culvert end sections that is being lapped with the end section reinforcement shall not be less than that required by ASTM C 1577 for the design fill height or the reinforcement detailed for the end section, whichever is greater.

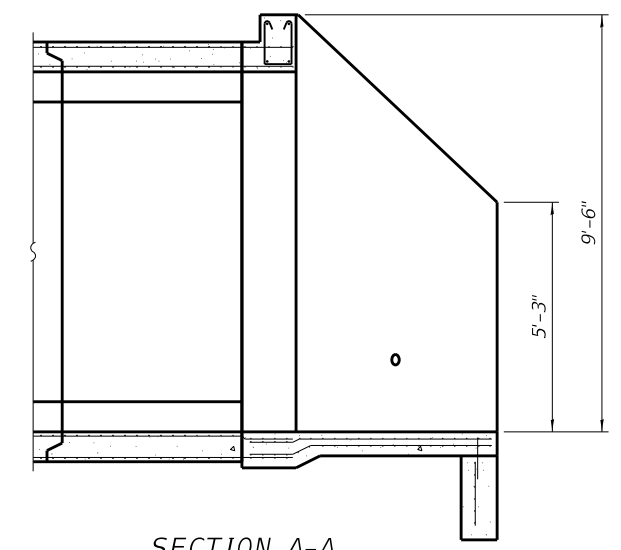
One drain hole shall be provided in each wingwall for end sections of box culverts having an opening with a clear rise greater than 3 ft. The drain hole shall be located within 1/3 of the clear rise of the box culvert and shall conform to the requirements of Article 503.11 of the Standard Specifications.



END VIEW



EAST APRON PLAN



SECTION A-A

MODEL: Default-Triple Box
 FILE NAME: P:\2020\20050004_CADD - DWG\4.4_StructFinal\0676014_Apron_Details_002.dgn
 3/21/2023 9:32:28 AM



TWM, INC.
 www.twm-inc.com
 ILLINOIS DESIGN FIRM
 LICENSE NO. 184-001220

USER NAME =	DESIGNED - MAL	REVISED -
PLOT SCALE =	CHECKED - BWP	REVISED -
PLOT DATE =	DRAWN - MAL	REVISED -
	CHECKED - BWP	REVISED -

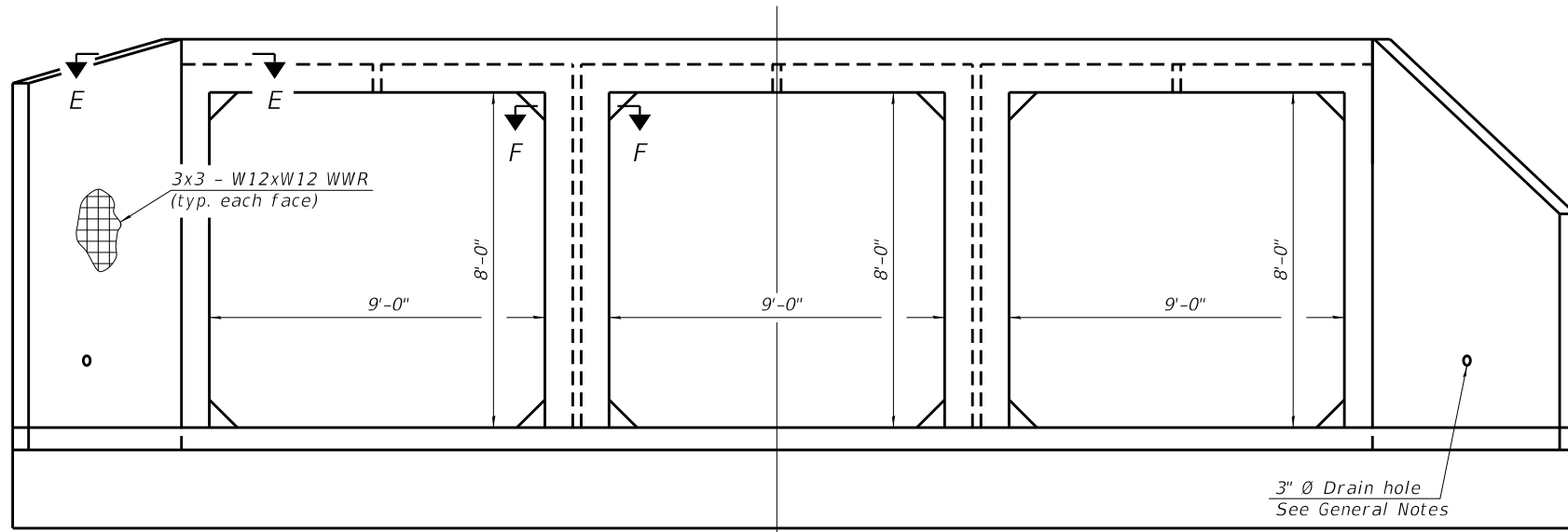


CITY OF COLUMBIA

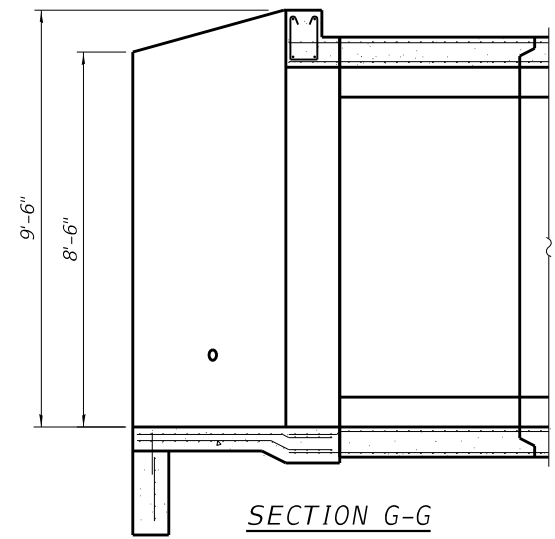
**MULTI-CELL PRECAST CONCRETE BOX CULVERT APRON END
 SECTION DETAILS - STRUCTURE NO. 067-6014**

SHEET 2 OF 6 SHEETS

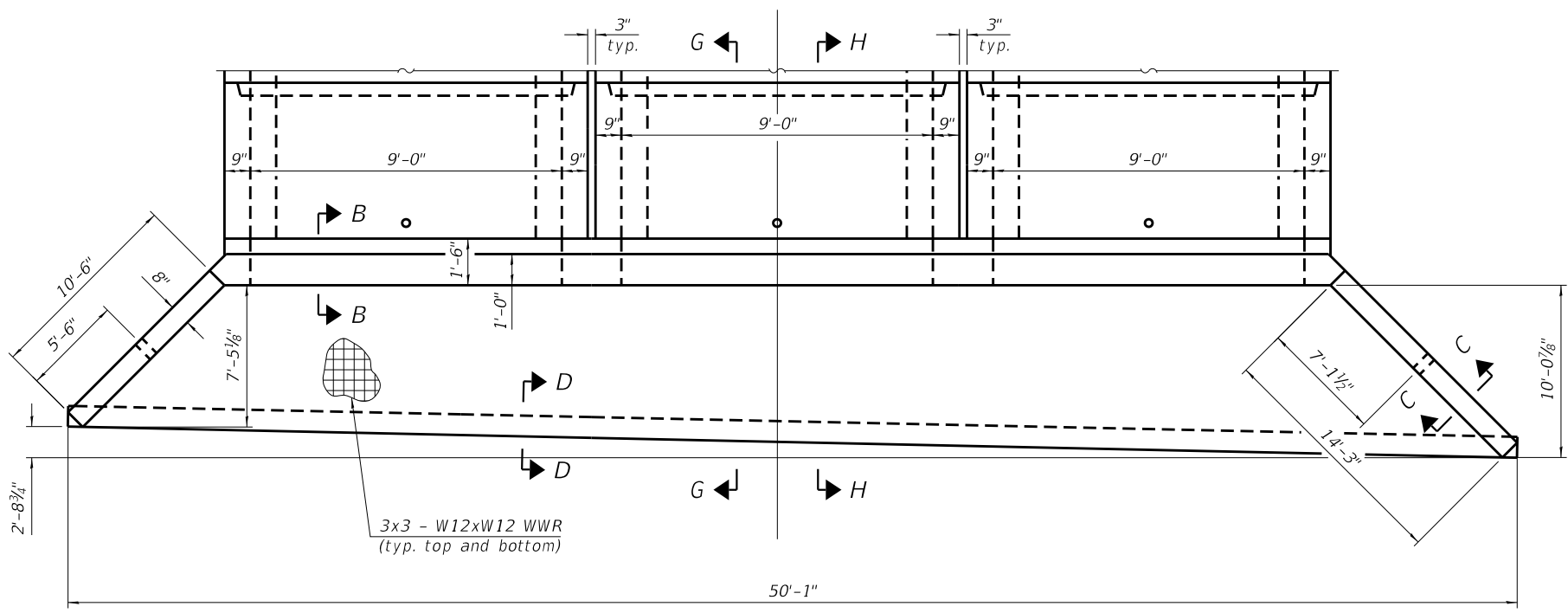
MUN. RTE.	SECTION	COUNTY	TOTAL SHEETS	SHEET NO.
	18-00055-00-BR	MONROE	21	16
CONTRACT NO. 97809				
ILLINOIS FED. AID PROJECT				



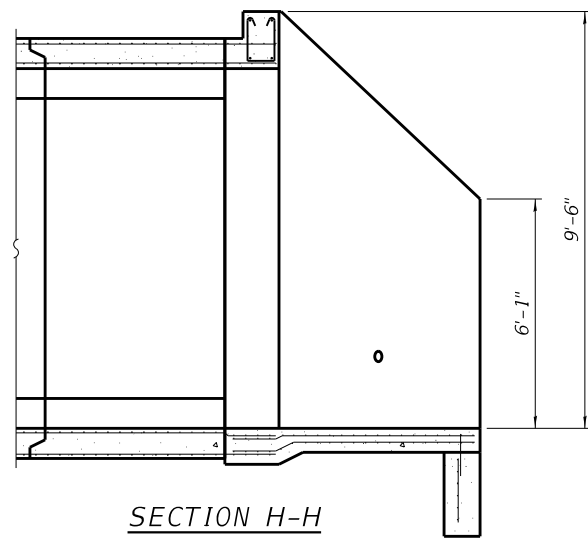
END VIEW



SECTION G-G



WEST APRON PLAN
(See East Apron Plan for Information Not Shown)



SECTION H-H

MODEL: Default-Triple Box
FILE NAME: P:\2020\200500\4_CADD - DWG\4.4_StructFinal\0676014_Apron_Details_002.dgn
3/21/2023 9:32:51 AM



TWM, INC.
www.twm-inc.com
ILLINOIS DESIGN FIRM LICENSE NO. 184-001220

USER NAME =	DESIGNED - MAL	REVISED -
PLOT SCALE =	CHECKED - BWP	REVISED -
PLOT DATE =	DRAWN - MAL	REVISED -
	CHECKED - BWP	REVISED -

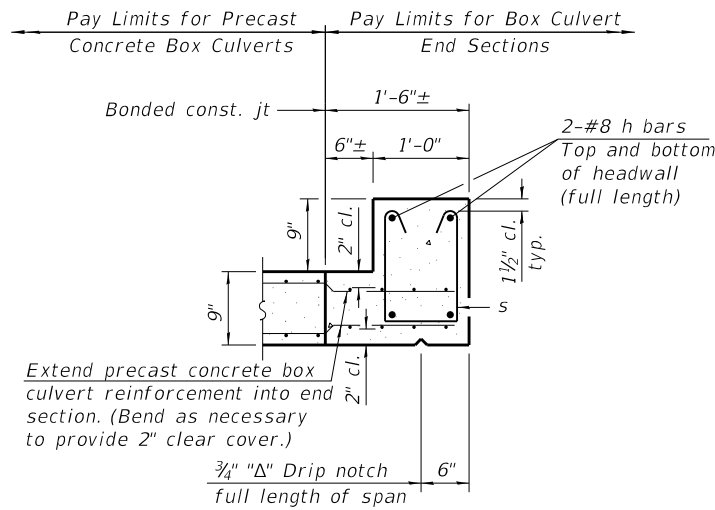


CITY OF COLUMBIA

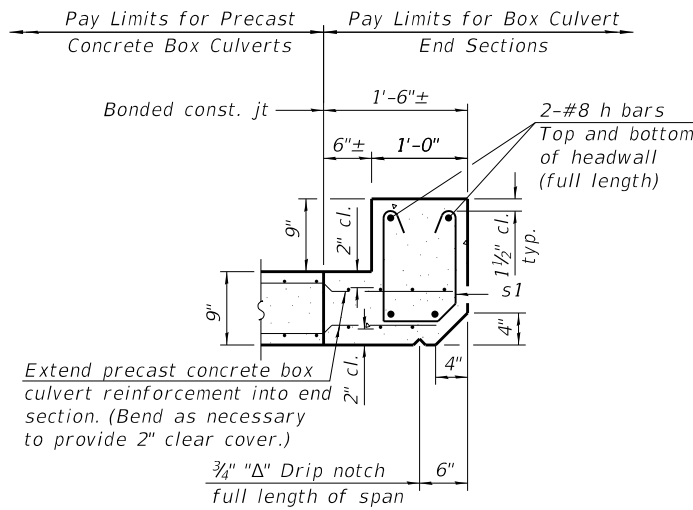
MULTI-CELL PRECAST CONCRETE BOX CULVERT APRON END
SECTION DETAILS - STRUCTURE NO. 067-6014

SHEET 3 OF 6 SHEETS

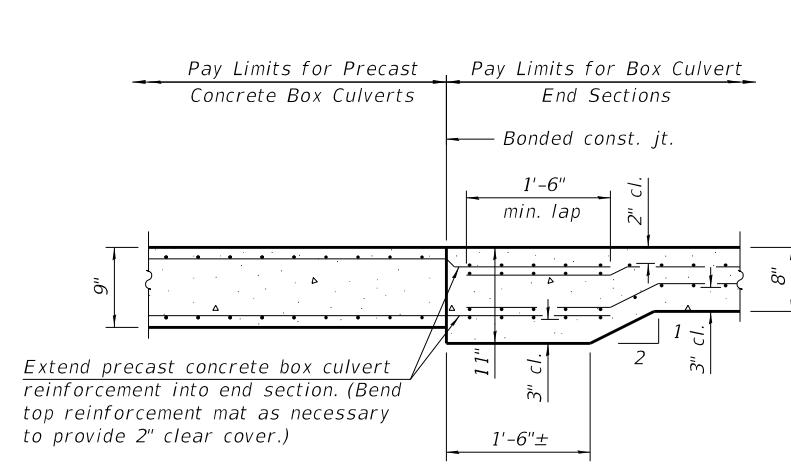
MUN. RTE. 6190	SECTION 18-00055-00-BR	COUNTY MONROE	TOTAL SHEETS 21	SHEET NO. 17
CONTRACT NO. 97809				
ILLINOIS FED. AID PROJECT				



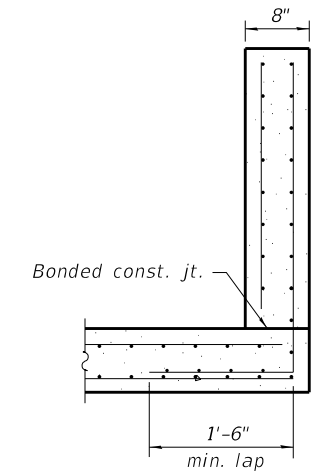
SECTION B-B
(Top slab at downstream end)



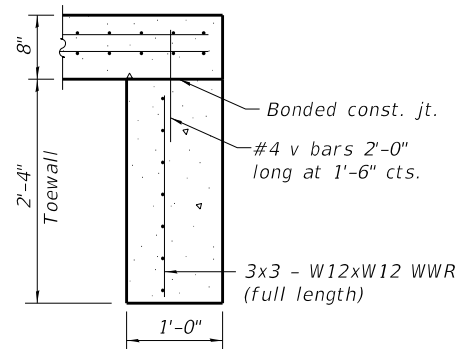
SECTION B-B
(Top slab at upstream end)



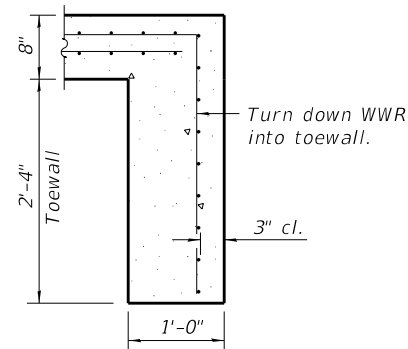
SECTION B-B
(Bottom slab)



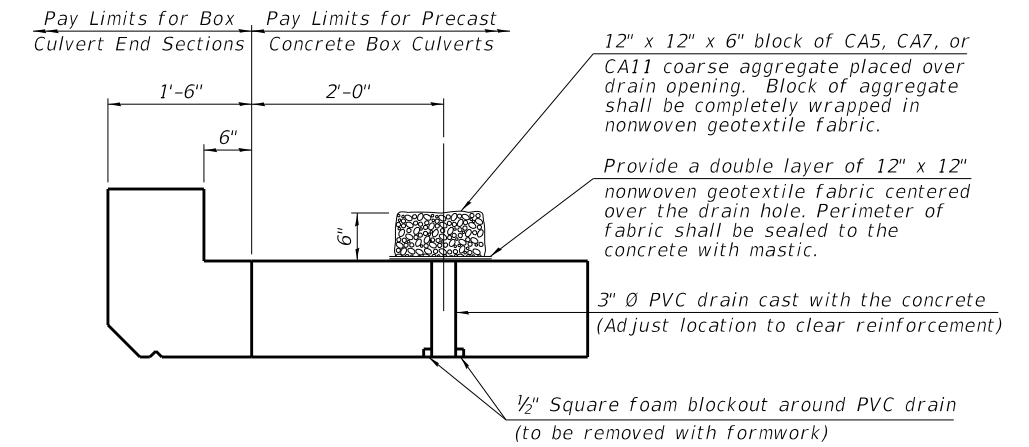
SECTION C-C



SECTION D-D



ALT. SECTION D-D



DRAIN DETAIL

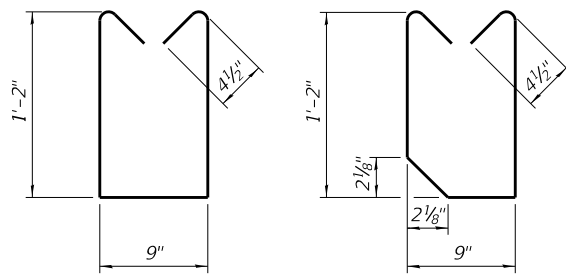
(All costs associated with furnishing and constructing the above drain detail will not be measured for payment but shall be included in the contract unit price for the associated work.)

TOEWALL CONSTRUCTION SEQUENCE

1. Perform excavation and construct toewall.
2. Backfill accordingly and prepare bedding for box culvert end sections.
3. Construct remainder of box culvert end section.

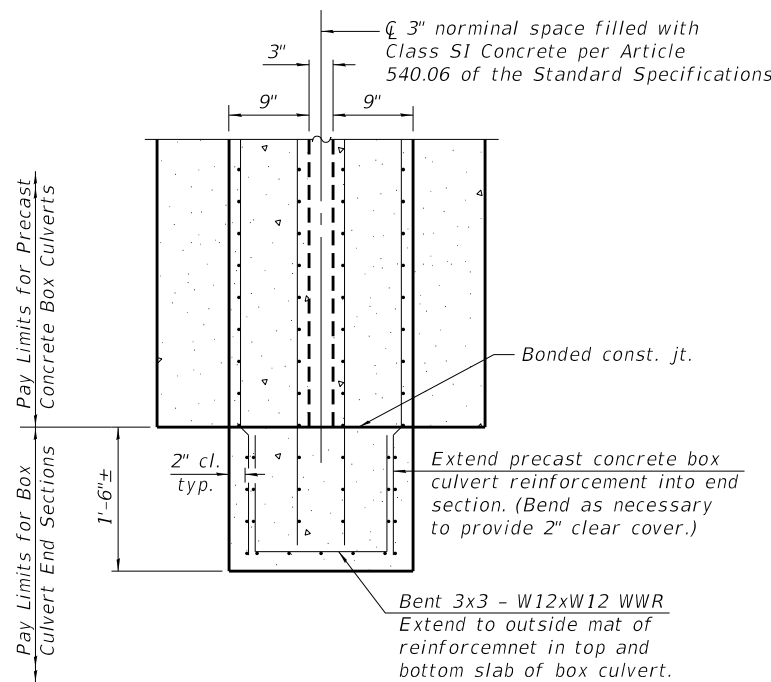
Note:

If soil conditions permit, the toewall may be poured monolithically with the bottom slab of the end section using Alt. Section D-D subject to approval from the Engineer.

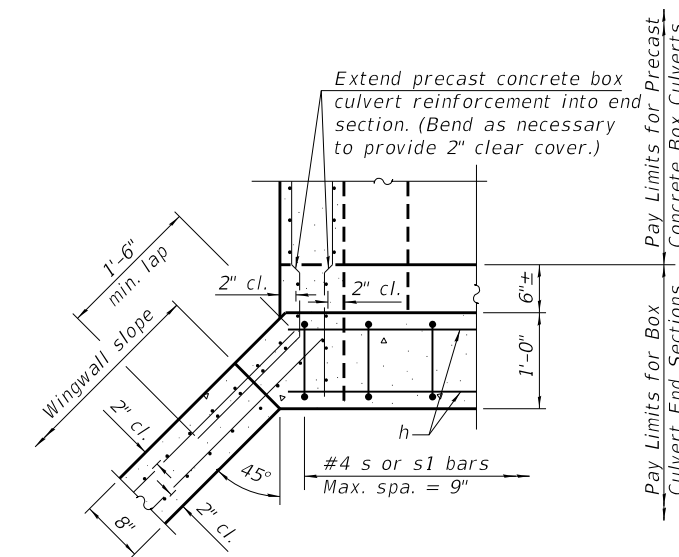


BAR s

BAR s1



SECTION F-F



SECTION E-E

MCB-AES

2-17-2017



TWM, INC.
www.twm-inc.com
ILLINOIS DESIGN FIRM LICENSE NO. 184-001220

USER NAME =	DESIGNED - MAL	REVISED -
PLOT SCALE =	CHECKED - BWP	REVISED -
PLOT DATE =	DRAWN - MAL	REVISED -
	CHECKED - BWP	REVISED -



CITY OF COLUMBIA

MULTI-CELL PRECAST CONCRETE BOX CULVERT APRON END
SECTION DETAILS - STRUCTURE NO. 067-6014

SHEET 4 OF 6 SHEETS

MUN. RTE.	SECTION	COUNTY	TOTAL SHEETS	SHEET NO.
6190	18-00055-00-BR	MONROE	21	18
CONTRACT NO. 97809				

ILLINOIS FED. AID PROJECT

MODEL: Default-Triple Box
FILE NAME: P:\2020\200500\4 CADD - DWG\4.4 Struct\Final\0676014_Apron_Details_002.dgn
3/21/2023 9:33:07 AM

BORING NUMBER C-1
PAGE 1 OF 2

Millennia Professional Services

CLIENT TWM PROJECT NAME Carl St. Bridge Replacement

PROJECT NUMBER MG20053 PROJECT LOCATION Columbia, IL

DATE STARTED 9/14/20 COMPLETED 9/14/20 GROUND ELEVATION 454.74 ft HOLE SIZE inches

DRILLING CONTRACTOR Bulldog GROUND WATER LEVELS:

DRILLING METHOD Hollow Stem Auger, NQ Rock Core AT TIME OF DRILLING --- Dry Before Switching to Core

LOGGED BY B. Fisher CHECKED BY J. Schaeffer AT END OF DRILLING --- Not Applicable Due to Core Mud

NOTES Approx. Location: 38°26'17.4"N, 90°12'13.9"W AFTER DRILLING ---

DEPTH (ft)	GRAPHIC LOG	MATERIAL DESCRIPTION	SAMPLE TYPE NUMBER	RECOVERY % (ROD)	BLOW COUNTS (N VALUE)	POCKET PEN. (tsf)	DRY UNIT WT. (pcf)	MOISTURE CONTENT (%)	ATTERBERG LIMITS			FINES CONTENT (%)
									LIQUID LIMIT	PLASTIC LIMIT	PLASTICITY INDEX	
0		Asphalt, tar and chip (6.0") Crushed rock subgrade (30.0")										
			SS 1	78	16-9-6 (15)			3				
		FILL: Brown, medium SAND (SP)										
		Possible FILL: Gray, lean CLAY (CL), with sand, trace gravel - undrained shear strength = 0.11 tsf	ST 2	54		0.25	109	17				
		- trace sand and gravel, trace sand lenses below 6.5 ft.	SS 3	94	0-0-0 (0)	0.5		24				
		Gray, lean CLAY (CL), with sand, trace gravel - undrained shear strength = 0.41 tsf	ST 4	50		1.0	99	24				
		- brown below 13.5 ft. - 2.0" gravelly seam at 14.0 ft.	SS 5	89	2-1-5 (6)	0.5		16				
		Brown mottled with gray, blue, and black, weathered, clayey SHALE										
		- purple mottled with blue and green, with fractured limestone below 18.5 ft.	SS 6	89	50-50-40 (90)			18				
		- 3.0" weathered limestone caprock at 20.0 ft.; broke through into weathered, clayey shale										

(Continued Next Page)

BORING NUMBER C-1
PAGE 2 OF 2

Millennia Professional Services

CLIENT TWM PROJECT NAME Carl St. Bridge Replacement

PROJECT NUMBER MG20053 PROJECT LOCATION Columbia, IL

DEPTH (ft)	GRAPHIC LOG	MATERIAL DESCRIPTION	SAMPLE TYPE NUMBER	RECOVERY % (ROD)	BLOW COUNTS (N VALUE)	POCKET PEN. (tsf)	DRY UNIT WT. (pcf)	MOISTURE CONTENT (%)	ATTERBERG LIMITS			FINES CONTENT (%)
									LIQUID LIMIT	PLASTIC LIMIT	PLASTICITY INDEX	
			SS 7	100	50/1*			6				
		LIMESTONE Gray to white, hard, moderately fractured, moderately weathered, with blue-gray weathered shale seams, thin to medium bedded, fine to coarsely crystalline - 2.0" blue-gray clayey shale seam at 23.75 ft.	RC 1	100 (33)								
		- rock core qu at 26.7 ft. = 10,870 psi	RC 2	100 (0)								
			RC 3	100 (87)								
		- rock core qu at 30.9 ft. = 10,100 psi	RC 4	100 (80)								
		- 2.0" blue-grey clayey shale seam at 32.5 ft.										
		Refusal at 22.6 feet. Bottom of borehole at 33.0 feet.										

MODEL: Default-Triple Box
FILE NAME: P:\2020\200500\4_CADD - DWG\4.4_StructFinal\0676014_Apron_Details_002.dgn
3/21/2023 9:33:17 AM



TWM, INC.
www.twm-inc.com
ILLINOIS FIRM LICENSE NO: 184-001220

USER NAME =	DESIGNED - MAL	REVISED -
PLOT SCALE =	CHECKED - BWP	REVISED -
PLOT DATE =	DRAWN - MAL	REVISED -
	CHECKED - BWP	REVISED -



CITY OF COLUMBIA

BORING C-1 - STRUCTURE NO. 067-6014

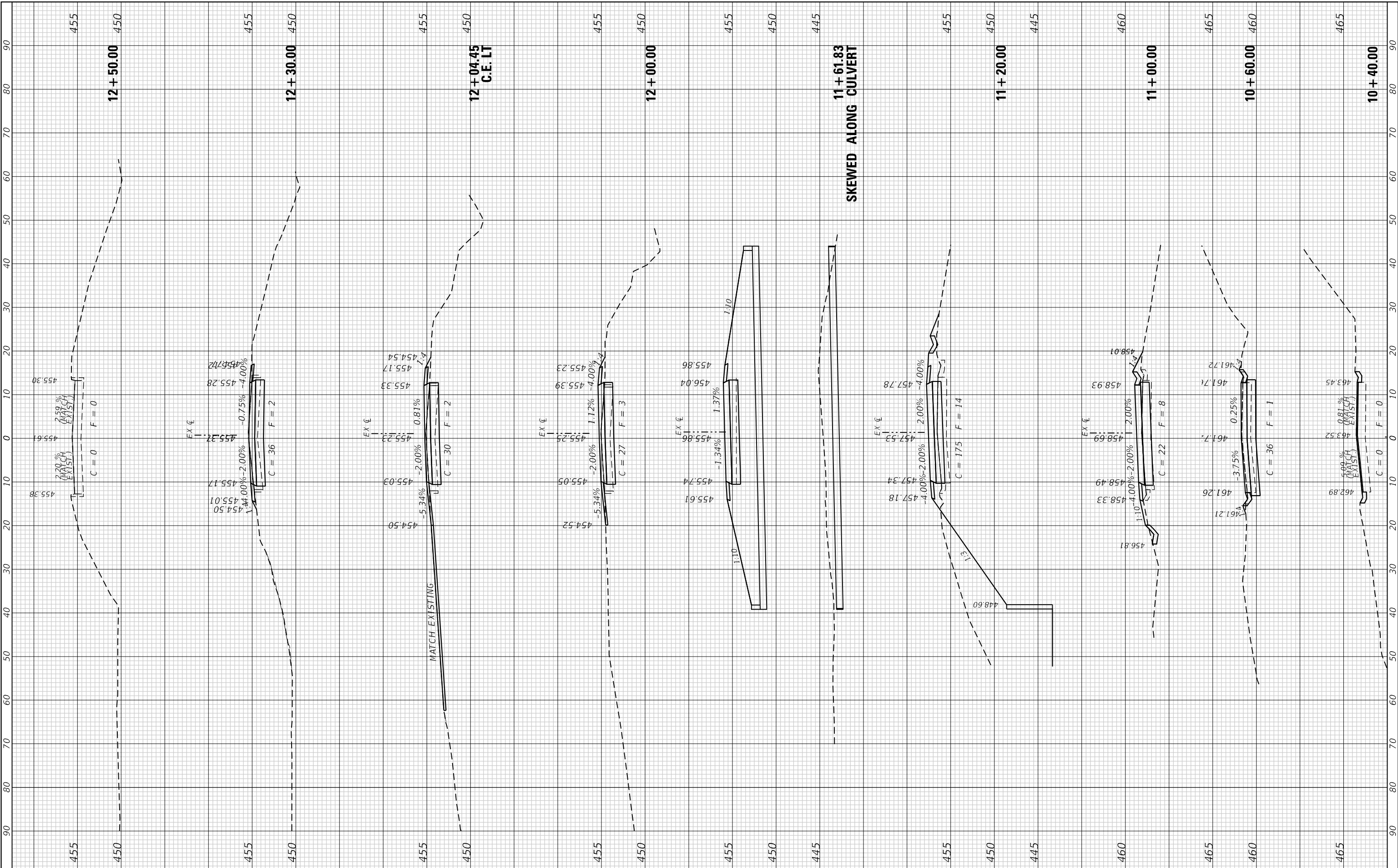
SHEET 5 OF 6 SHEETS

MUN. RTE.	SECTION	COUNTY	TOTAL SHEETS	SHEET NO.
6190	18-00055-00-BR	MONROE	21	19
CONTRACT NO. 97809				
ILLINOIS		FED. AID PROJECT		

FINAL SURVEY NO.	SURVEYED PLOTTED AREAS CHECKED	BY	DATE

ORIGINAL SURVEY NO.	SURVEYED PLOTTED AREAS CHECKED	BY	DATE

MODEL: Defnair
 FILE NAME: P:\2020\20205000\ CADD - DWG\4-1 Job\CADD Sheets\20205000-00-00-00.dwg



TWM ENGINEERING GEOSPATIAL SERVICES
 TWM, INC. www.twm-inc.com
 IL DESIGN FIRM LICENSE NO: 184-001220

USER NAME = jstein	DESIGNED - MLS	REVISED -
PLOT SCALE = 20.0000' / in.	DRAWN - DCL	REVISED -
PLOT DATE = 3/27/2023	CHECKED - JWS	REVISED -
	DATE - MARCH 2023	REVISED -



CITY OF COLUMBIA

CROSS SECTIONS

SCALE: 1"=10'	SHEET	OF	SHEETS	STA. 10+40.00	TO STA. 12+50.00
---------------	-------	----	--------	---------------	------------------

MUN 6190	SECTION 18-00055-00-BR	COUNTY MONROE	TOTAL SHEETS 21	SHEET NO. 21
CONTRACT NO. 97809				
ILLINOIS FED. AID PROJECT				