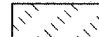


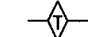
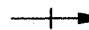
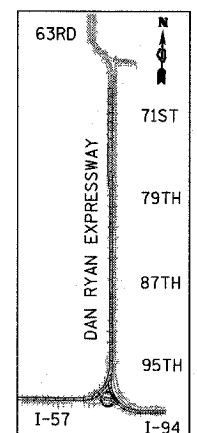
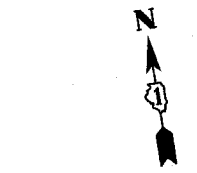
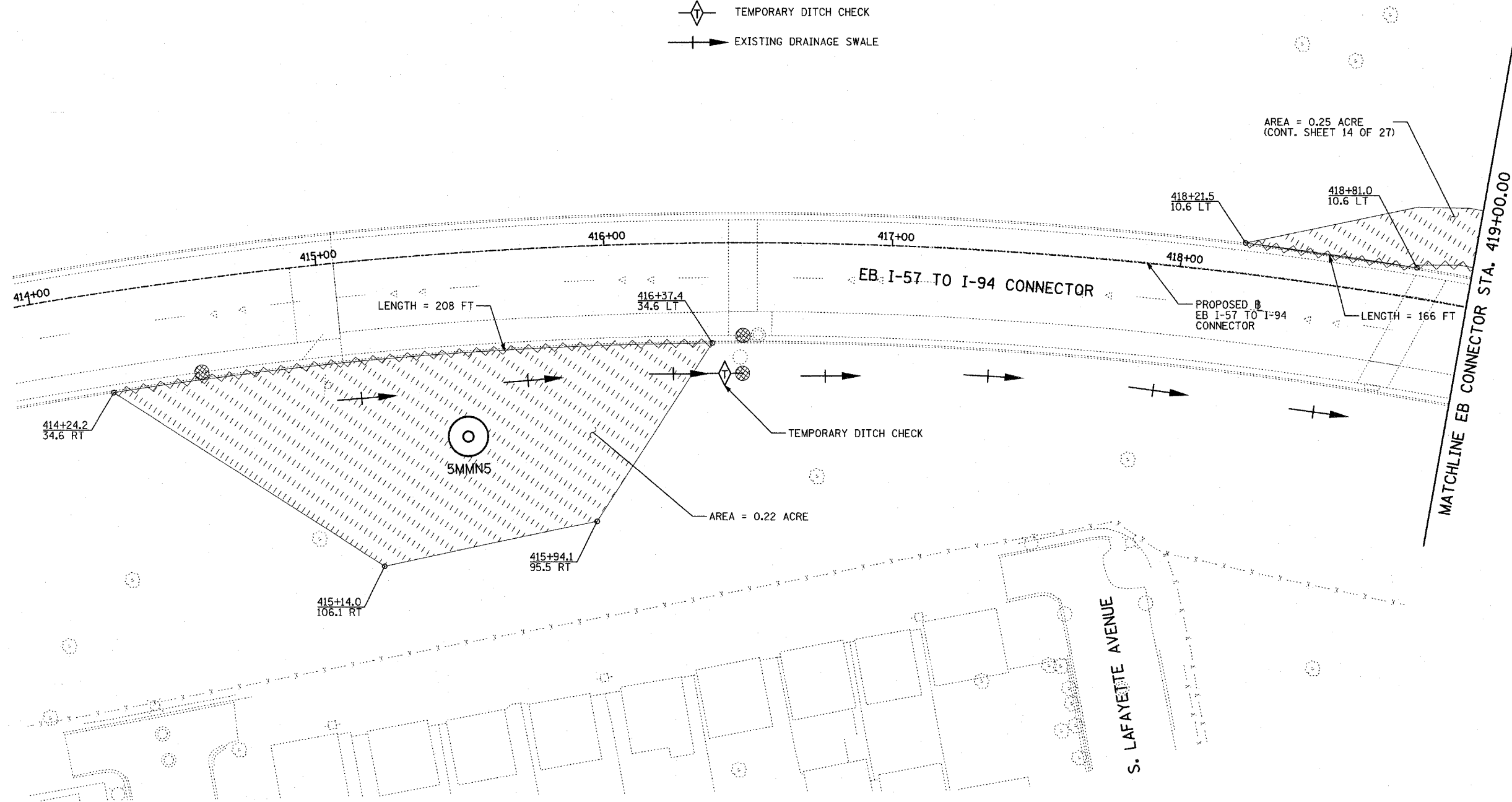


NOTES:

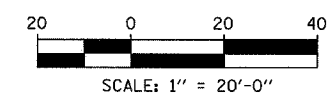
1. FINAL TURF RESTORATION WILL BE PROVIDED BY CONTRACTOR RESTORATION TO MATCH TURF RESTORATION PROVIDED BY CONTRACTS #62593 & #62304.
2. PLAN REFLECTS CONTRACTS #62593 & #62304 AS EXISTING CONDITIONS.

LEGEND:

-  TEMPORARY EROSION CONTROL SEEDING (100 LBS PER ACRE)
-  SEDIMENT CONTROL, SILT FENCE
-  INLET FILTER, TO BE INSTALLED IN OFF PROJECT DRAINAGE STRUCTURES ACCEPTING STORMWATER RUNOFF
-  TEMPORARY DITCH CHECK
-  EXISTING DRAINAGE SWALE



LOCATION MAP



TYLIN INTERNATIONAL

SHEET 26 OF 27

REVISIONS	
NAME	DATE

ILLINOIS DEPARTMENT OF TRANSPORTATION
 F.A.I. 94 (DAN RYAN EXPRESSWAY)
 I-57 TO 71st STREET
 EROSION CONTROL PLAN
 EB I-57 TO I-94 CONNECTOR
 STA. 413+94.00 TO STA. 419+00.00
 5MMN5

SCALE: 1"=20'
 DATE: JANUARY 9, 2007

DRAWN BY: CBS
 CHECKED BY: TGB