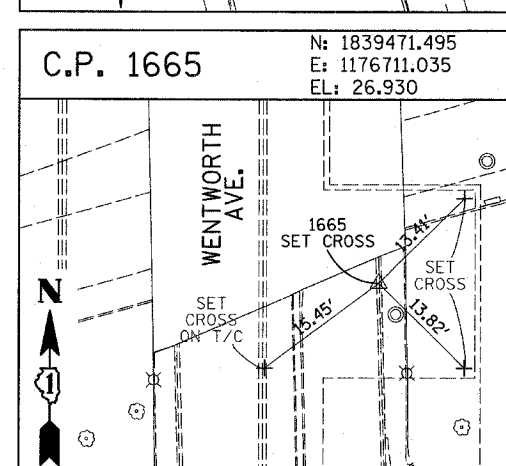
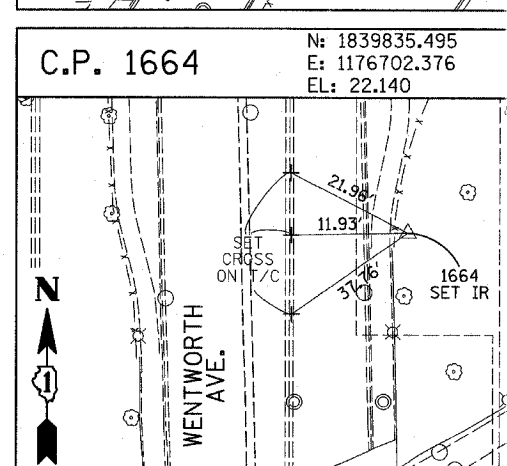
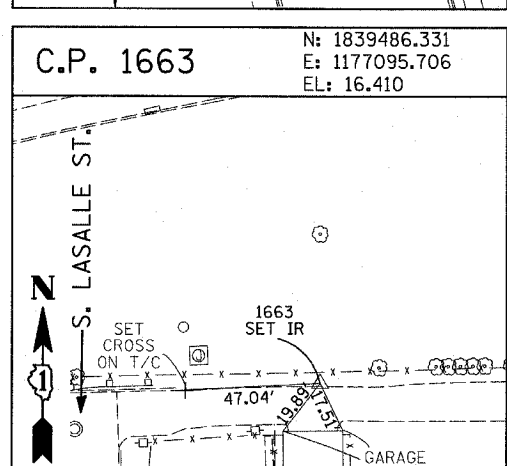
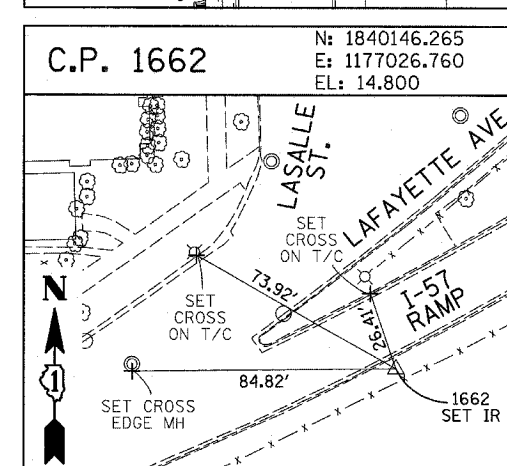
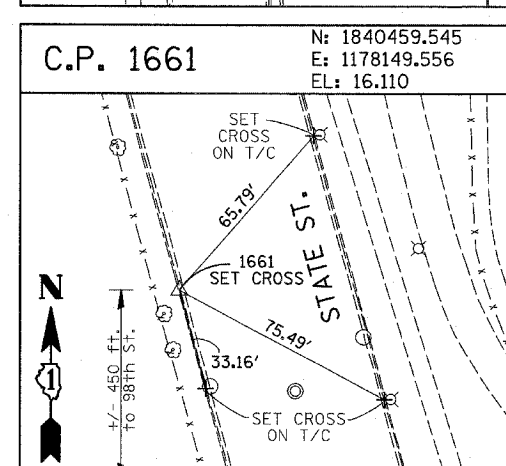
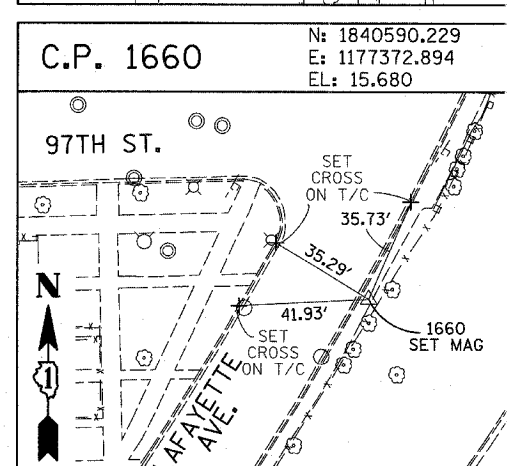
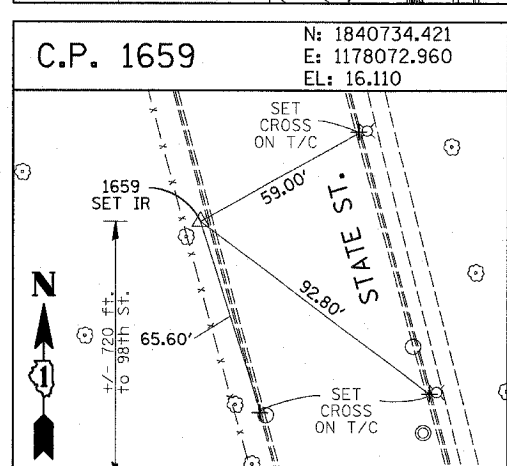
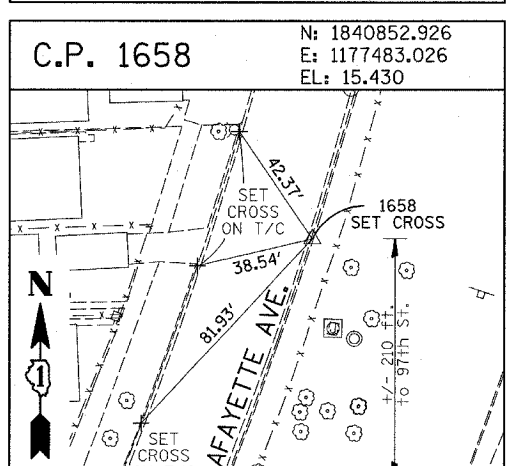
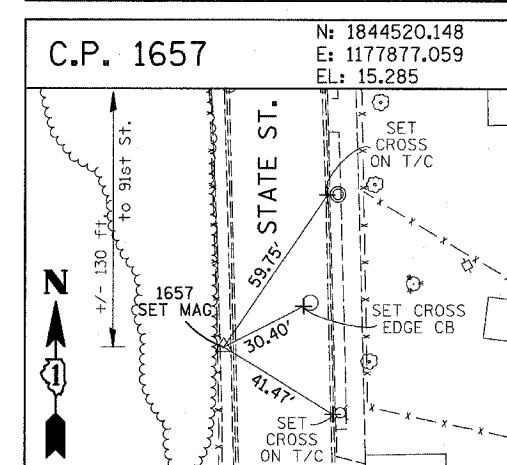
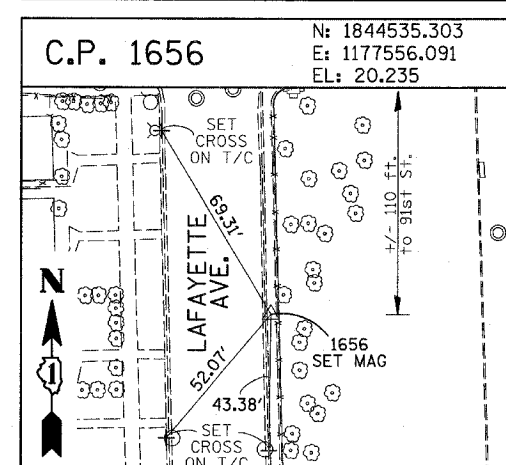
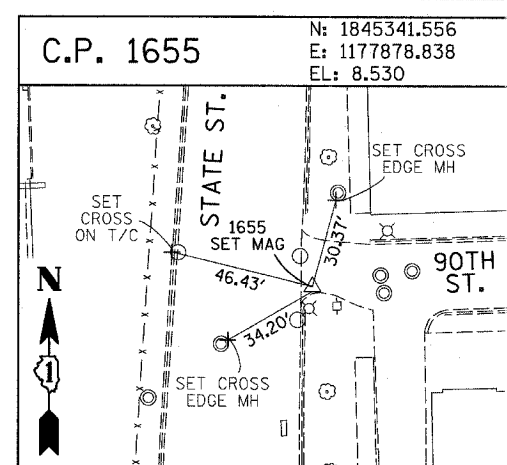
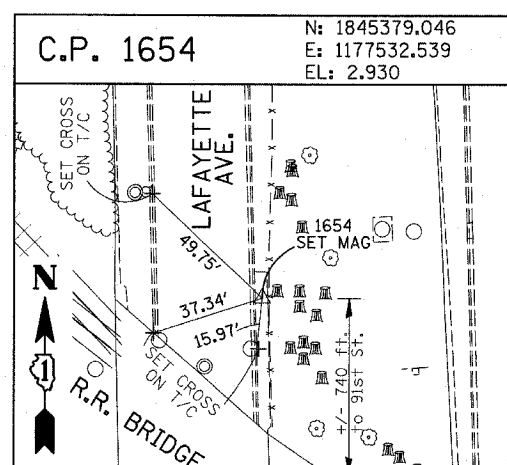
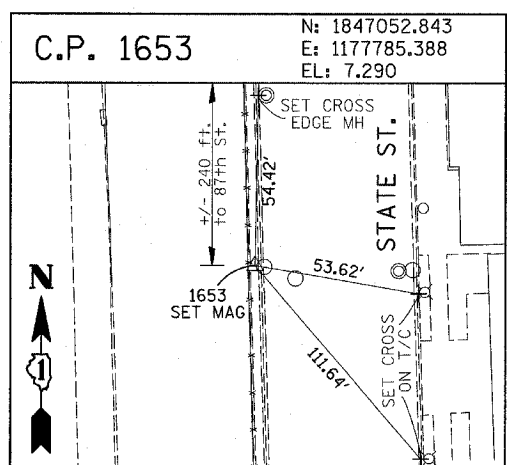
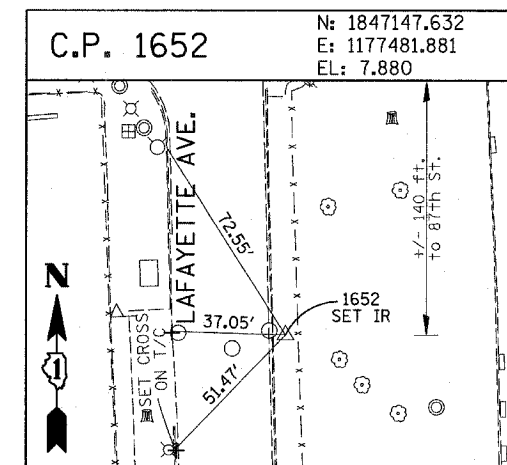
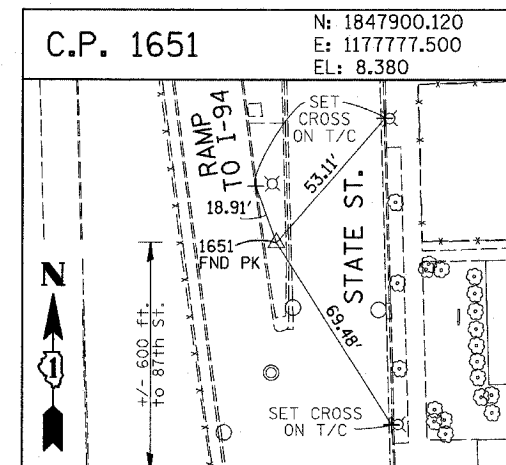
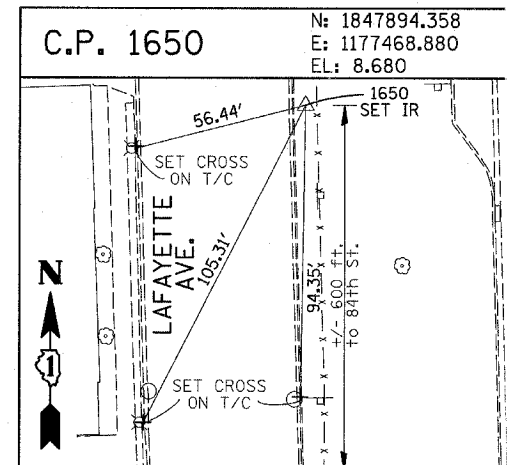
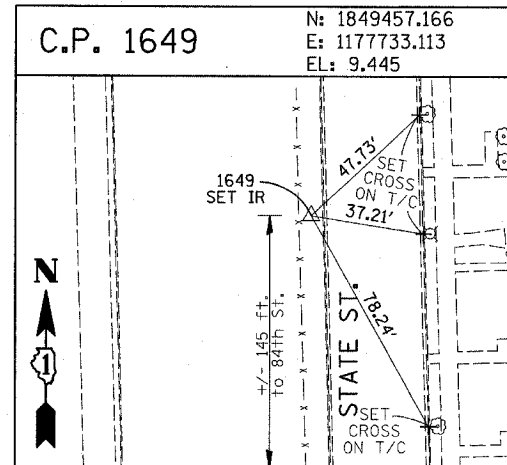
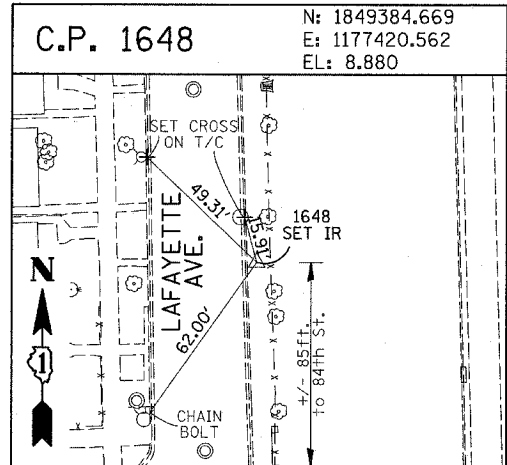


F.A.I. RTE.	SECTION	COUNTY	TOTAL SHEETS	SHEET NO.
94	2005-048 L	COOK	85	73
STA. -----		TO STA. -----		
FED. ROAD DIST. NO.		ILLINOIS FED. AID PROJECT		
60A23				



American Surveying Consultants, P.C.
 SURVEYORS-ENGINEERS-RODENTISTS-MAPPING SCIENTISTS
 1637 Ploor Rd., Chicago, IL 60601 6033 N. Northwest Hwy., Chicago, IL 60631
 312-467-5511 312-467-5511

REVISIONS	
NAME	DATE

ILLINOIS DEPARTMENT OF TRANSPORTATION
 F.A.I. 94 (DAN RYAN EXPRESSWAY)
 I-57 to 71st STREET
 SURVEY TIES FOR CONTROL POINTS
 SHEET 3 OF 4
 SCALE: 1"=30'
 DATE: JANUARY 9, 2007
 DRAWN BY: GSP
 CHECKED BY: MMW