

F.A.P. RTE.	SECTION	COUNTY	TOTAL SHEETS	SHEET NO.
577	2006-004TS	COOK/DUPAGE	19	8
STA.	TO STA.			
FED. ROAD DIST. NO.	ILLINOIS	FED. AID PROJECT		
CONTRACT NO. 60B19				

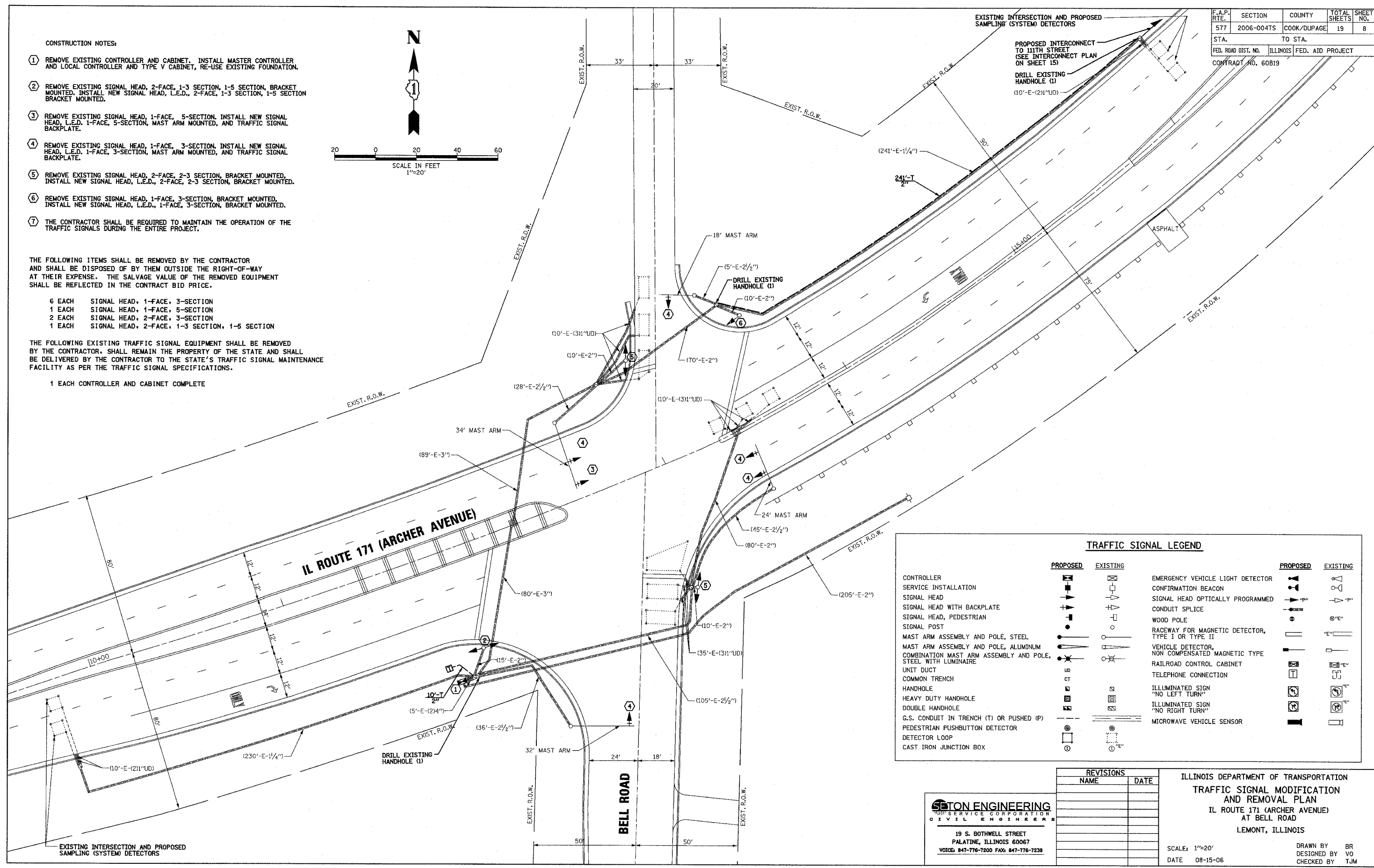
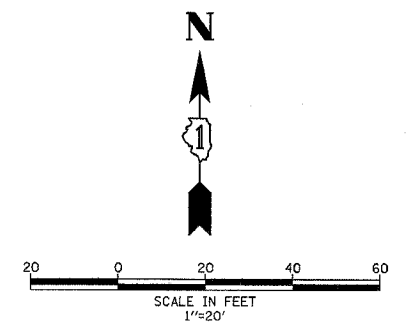
- CONSTRUCTION NOTES:**
- REMOVE EXISTING CONTROLLER AND CABINET. INSTALL MASTER CONTROLLER AND LOCAL CONTROLLER AND TYPE V CABINET, RE-USE EXISTING FOUNDATION.
  - REMOVE EXISTING SIGNAL HEAD, 2-FACE, 1-3 SECTION, 1-5 SECTION, BRACKET MOUNTED. INSTALL NEW SIGNAL HEAD, L.E.D., 2-FACE, 1-3 SECTION, 1-5 SECTION BRACKET MOUNTED.
  - REMOVE EXISTING SIGNAL HEAD, 1-FACE, 5-SECTION. INSTALL NEW SIGNAL HEAD, L.E.D. 1-FACE, 5-SECTION, MAST ARM MOUNTED, AND TRAFFIC SIGNAL BACKPLATE.
  - REMOVE EXISTING SIGNAL HEAD, 1-FACE, 3-SECTION. INSTALL NEW SIGNAL HEAD, L.E.D. 1-FACE, 3-SECTION, MAST ARM MOUNTED, AND TRAFFIC SIGNAL BACKPLATE.
  - REMOVE EXISTING SIGNAL HEAD, 2-FACE, 2-3 SECTION, BRACKET MOUNTED. INSTALL NEW SIGNAL HEAD, L.E.D., 2-FACE, 2-3 SECTION, BRACKET MOUNTED.
  - REMOVE EXISTING SIGNAL HEAD, 1-FACE, 3-SECTION, BRACKET MOUNTED. INSTALL NEW SIGNAL HEAD, L.E.D., 1-FACE, 3-SECTION, BRACKET MOUNTED.
  - THE CONTRACTOR SHALL BE REQUIRED TO MAINTAIN THE OPERATION OF THE TRAFFIC SIGNALS DURING THE ENTIRE PROJECT.

THE FOLLOWING ITEMS SHALL BE REMOVED BY THE CONTRACTOR AND SHALL BE DISPOSED OF BY THEM OUTSIDE THE RIGHT-OF-WAY AT THEIR EXPENSE. THE SALVAGE VALUE OF THE REMOVED EQUIPMENT SHALL BE REFLECTED IN THE CONTRACT BID PRICE.

- 6 EACH SIGNAL HEAD, 1-FACE, 3-SECTION
- 1 EACH SIGNAL HEAD, 1-FACE, 5-SECTION
- 2 EACH SIGNAL HEAD, 2-FACE, 3-SECTION
- 1 EACH SIGNAL HEAD, 2-FACE, 1-3 SECTION, 1-5 SECTION

THE FOLLOWING EXISTING TRAFFIC SIGNAL EQUIPMENT SHALL BE REMOVED BY THE CONTRACTOR. SHALL REMAIN THE PROPERTY OF THE STATE AND SHALL BE DELIVERED BY THE CONTRACTOR TO THE STATE'S TRAFFIC SIGNAL MAINTENANCE FACILITY AS PER THE TRAFFIC SIGNAL SPECIFICATIONS.

- 1 EACH CONTROLLER AND CABINET COMPLETE



TRAFFIC SIGNAL LEGEND			
PROPOSED	EXISTING	PROPOSED	EXISTING
CONTROLLER	[Symbol]	EMERGENCY VEHICLE LIGHT DETECTOR	[Symbol]
SERVICE INSTALLATION	[Symbol]	CONFIRMATION BEACON	[Symbol]
SIGNAL HEAD	[Symbol]	SIGNAL HEAD OPTICALLY PROGRAMMED	[Symbol]
SIGNAL HEAD WITH BACKPLATE	[Symbol]	CONDUIT SPLICE	[Symbol]
SIGNAL HEAD, PEDESTRIAN	[Symbol]	WOOD POLE	[Symbol]
SIGNAL POST	[Symbol]	RACEWAY FOR MAGNETIC DETECTOR, TYPE I OR TYPE II	[Symbol]
MAST ARM ASSEMBLY AND POLE, STEEL	[Symbol]	VEHICLE DETECTOR, NON COMPENSATED MAGNETIC TYPE	[Symbol]
MAST ARM ASSEMBLY AND POLE, ALUMINUM	[Symbol]	RAILROAD CONTROL CABINET	[Symbol]
COMBINATION MAST ARM ASSEMBLY AND POLE, STEEL WITH LUMINAIRE	[Symbol]	TELEPHONE CONNECTION	[Symbol]
UNIT DUCT	[Symbol]	ILLUMINATED SIGN "NO LEFT TURN"	[Symbol]
COMMON TRENCH	[Symbol]	ILLUMINATED SIGN "NO RIGHT TURN"	[Symbol]
HANDHOLE	[Symbol]	MICROWAVE VEHICLE SENSOR	[Symbol]
HEAVY DUTY HANDHOLE	[Symbol]		
DOUBLE HANDHOLE	[Symbol]		
G.S. CONDUIT IN TRENCH (T) OR PUSHED (P)	[Symbol]		
PEDESTRIAN PUSHBUTTON DETECTOR	[Symbol]		
DETECTOR LOOP	[Symbol]		
CAST IRON JUNCTION BOX	[Symbol]		

**SETON ENGINEERING**  
 A SERVICE CORPORATION  
 CIVIL ENGINEERS

19 S. BOTHWELL STREET  
 PALATINE, ILLINOIS 60067  
 VOICE: 847-776-7200 FAX: 847-776-7230

REVISIONS	
NAME	DATE

ILLINOIS DEPARTMENT OF TRANSPORTATION  
 TRAFFIC SIGNAL MODIFICATION  
 AND REMOVAL PLAN  
 IL ROUTE 171 (ARCHER AVENUE)  
 AT BELL ROAD  
 LEMONT, ILLINOIS

SCALE: 1"=20'  
 DATE: 08-15-06

DRAWN BY BR  
 DESIGNED BY VO  
 CHECKED BY TJM