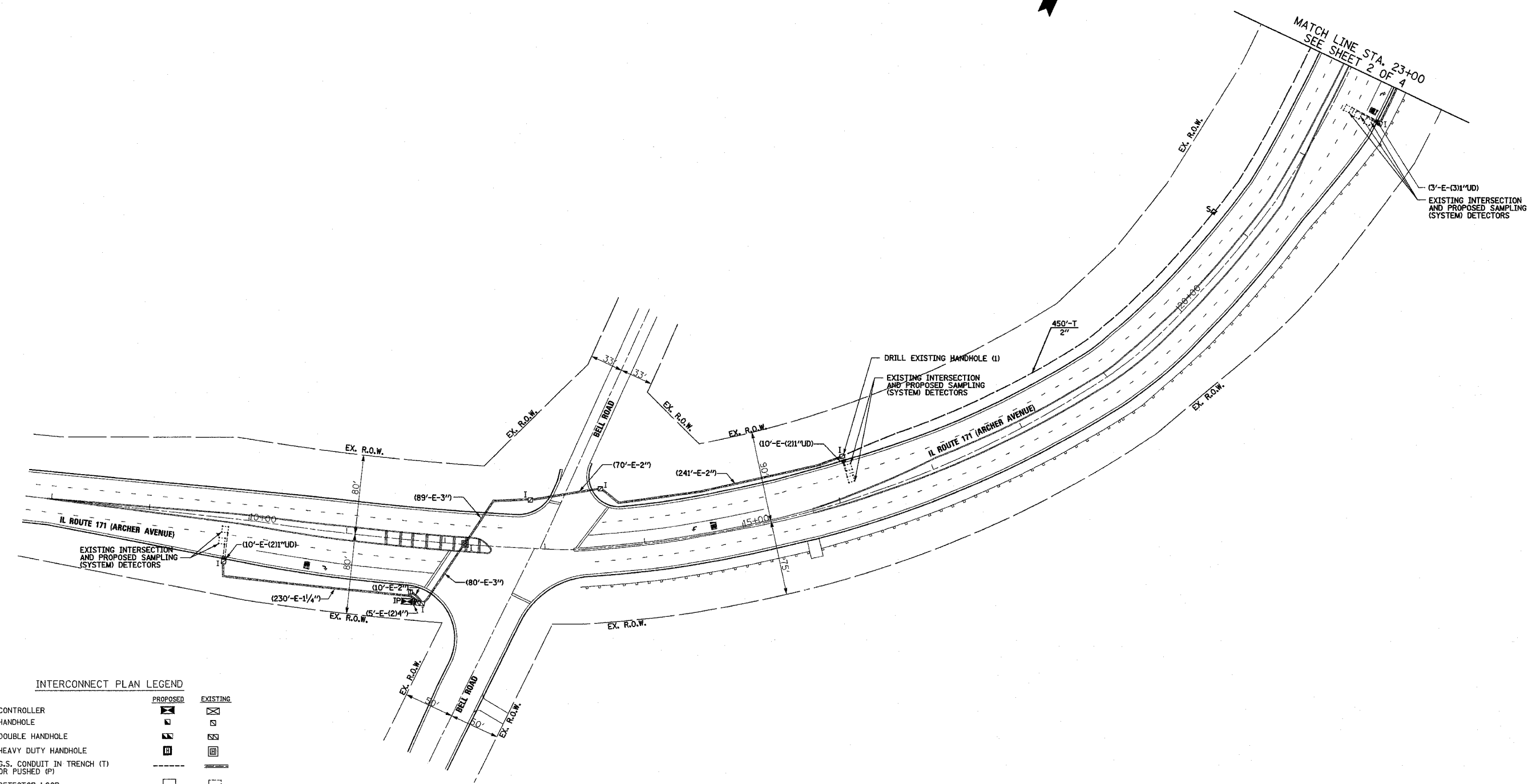
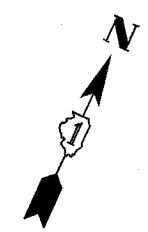
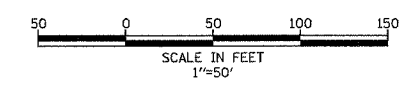


F.A.P. RTE.	SECTION	COUNTY	TOTAL SHEETS	SHEET NO.
577	2006-004TS	COOK/DUPAGE	19	15
STA.	TO STA.			
FED. ROAD DIST. NO.	ILLINOIS FED. AID PROJECT			
CONTRACT NO. 60819				



INTERCONNECT PLAN LEGEND

	PROPOSED	EXISTING
CONTROLLER		
HANDHOLE		
DOUBLE HANDHOLE		
HEAVY DUTY HANDHOLE		
G.S. CONDUIT IN TRENCH (T) OR PUSHED (P)		
DETECTOR LOOP		
UNIT DUCT SYSTEM	UD	S
INTERSECTION	IP	I
TELEPHONE CONNECTION		

REVISIONS	
NAME	DATE

SETON ENGINEERING
CONSULTING SERVICE CORPORATION
 CIVIL ENGINEERS
 19 S. BOTHWELL STREET
 PALATINE, ILLINOIS 60067
 VOICE: 847-776-7200 FAX: 847-776-7239

ILLINOIS DEPARTMENT OF TRANSPORTATION
INTERCONNECT PLAN
 IL ROUTE 171 (ARCHER AVENUE)
 FROM IL ROUTE 83 TO BELL ROAD
 LEMONT, ILLINOIS
 SHEET 1 OF 4

SCALE: 1"= 50'
 DATE 08-15-06
 DRAWN BY BR
 DESIGNED BY VO
 CHECKED BY TJM