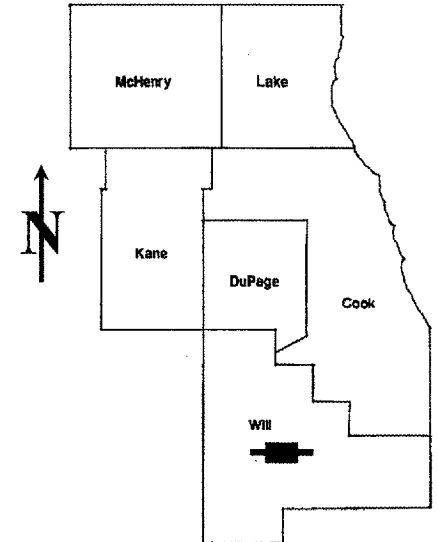


ROUTE	SECTION	COUNTY	TOTAL SHEETS	SHEET NUMBER
FAP 531	2006-012 PCC-PP	WILL	8	1

**STATE OF ILLINOIS
DEPARTMENT OF TRANSPORTATION
DIVISION OF HIGHWAYS
DISTRICT ONE**

CONTRACT NO. 60B36

D-91-326-06



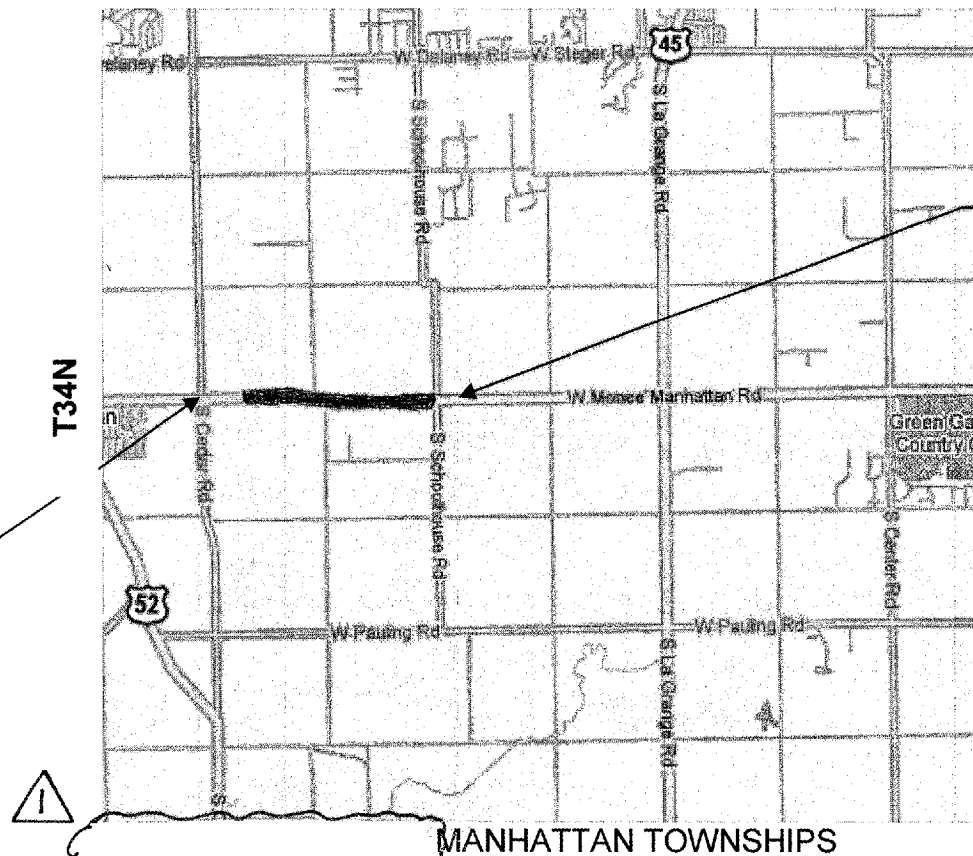
LOCATION OF IMPROVEMENT INDICATED THUS:

FOR INDEX OF SHEETS SEE SHEET 2

PROPOSED HIGHWAY PLANS
FAP ROUTE 531: MANHATTAN-MONEE RD.
SCHOOL RD. TO CEDAR RD.
SECTION: 2006-012 PCC-PP
HMA CLASS D PATCHING TO PCC PAVEMENT
WILL COUNTY
C-91-326-06

**IMPROVEMENT LOCATED IN
WILL COUNTY**

R11E/R12E



**IMPROVEMENT
ENDS:
STA. 110+00**

**IMPROVEMENT
BEGINS:
STA. 0+00**

TRAFFIC DATA
SPEED LIMIT = 55 MPH
2004 ADT = 4700

1) NET & GROSS LENGTH OF IMPROVEMENT = 11,000 FT = 2.08 MILES

REV. 2-27-07

**STATE OF ILLINOIS
DEPARTMENT OF TRANSPORTATION
DIVISION OF HIGHWAYS**

SUBMITTED: Jan. 3 2007
Diane O'Keefe
DEPUTY DIRECTOR OF HIGHWAYS, REGION ENGINEER

February 2, 2007
Eric E. Horn
ENGINEER OF DESIGN AND ENVIRONMENT

February 2, 2007
Milton R. See, P.E.
DIRECTOR, DIVISION OF HIGHWAYS

**PRINTED BY THE AUTHORITY
OF THE STATE OF ILLINOIS**

**J.U.L.I.E.: JOINT UTILITY LOCATION
INFORMATION FOR EXCAVATION
(800)892-0123**

DISTRICT ONE - DESIGN - PLAN PREPARATION ENGINEER:
KEN ENG / ROBERT BORO (847) 705-4178

CONTRACT NO. 60B36

ROUTE	SECTION	COUNTY	TOTAL SHEETS	SHEET NUMBER
FAP 531	2006-012 PCC-PP	WILL	8	2

GENERAL NOTES

CONTRACT 60B36

INDEX OF SHEETS

<u>SHEET NO.</u>	<u>DESCRIPTION</u>
1	TITLE SHEET
2	INDEX OF SHEETS, STATE STANDARDS GENERAL NOTES
3	SUMMARY OF QUANTITIES
4	TYPICAL SECTION
5-6	PAVEMENT PATCHING SCHEDULE
7	TRAFFIC CONTROL AND PROTECTION FOR SIDE ROADS, INTERSECTIONS, AND DRIVEWAYS
8	DISTRICT ONE TYPICAL PAVEMENT MARKINGS
BA.	<i>TYPICAL APPLICATIONS RAISED REFLECTIVE PAVEMENT MARKERS (SNOW- PLOW RESISTANT)</i>

STATE STANDARDS

- 442201-02 CLASS C AND D PATCHES
- 701201-02 LANE CLOSURE, 2L, 2W, DAY ONLY, FOR SPEEDS ≥45 MPH
- 701301-02 LANE CLOSURE, 2L, 2W, SHORT TIME OPERATIONS
- 702001-00*

BEFORE STARTING ANY EXCAVATION, THE CONTRACTOR SHALL CALL "J.U.L.I.E." AT (800) 892-0123 FOR FIELD LOCATIONS OF BURIED ELECTRIC, TELEPHONE AND GAS UTILITIES. (48 HOUR NOTIFICATION IS REQUIRED).

THE CONTRACTOR SHALL COORDINATE CONSTRUCTION ACTIVITIES WITH UTILITY COMPANIES.

THE CONTRACTOR WILL NOT BE ALLOWED TO SET UP A YARD OR FIELD OFFICE ON STATE PROPERTY WITHOUT WRITTEN PERMISSION FROM THE DEPARTMENT.

BEFORE BEGINNING ANY WORK, THE CONTRACTOR SHALL RETAIN AND RECORD FOR FUTURE REFERENCES ALL EXISTING PAVEMENT MARKING LINES AND RAISED REFLECTIVE PAVEMENT MARKERS IN ORDER THAT THESE LOCATIONS CAN BE RE-ESTABLISHED FOR STRIPING. EXACT LOCATION OF ALL PAVEMENT MARKINGS SHALL BE AS DIRECTED BY THE ENGINEER.

IT SHALL BE THE CONTRACTOR'S RESPONSIBILITY TO VERIFY ALL DIMENSIONS AND CONDITIONS EXISTING IN THE FIELD PRIOR TO CONSTRUCTION AND ORDERING OF MATERIALS.

THE ENGINEER SHALL CONTACT CORA MATHIS, AREA TRAFFIC FIELD ENGINEER AT (815) 485-6475. A MINIMUM OF TWO (2) WEEKS PRIOR TO THE PLACEMENT OF PERMANENT PAVEMENT MARKING.

ALL DAMAGE TO EXISTING PAVEMENT MARKINGS OR RAISED REFLECTIVE PAVEMENT MARKERS OUTSIDE THE REMOVAL LINE SHOWN ON THE PLANS SHALL BE REPLACED AT THE CONTRACTOR'S EXPENSE.

THESE PLANS HAVE BEEN PREPARED FROM NOTES RECEIVED FROM THE BUREAU OF MAINTENANCE.


DO NOT SCALE PLANS FOR CONSTRUCTION DIMENSIONS.

THE CONTRACTOR SHALL CONTACT THE DISTRICT ONE TRAFFIC CONTROL SUPERVISOR AT (847)705-4470. A MINIMUM OF 72 HOURS IN ADVANCE OF BEGINNING WORK.

THE ENGINEER SHALL OBTAIN APPROVAL FROM THE DISTRICT ONE BUREAU CHIEF OF MAINTENANCE FOR ANY PROPOSED REVISIONS IN THE SCHEDULE PAVEMENT PATCHING LOCATIONS.

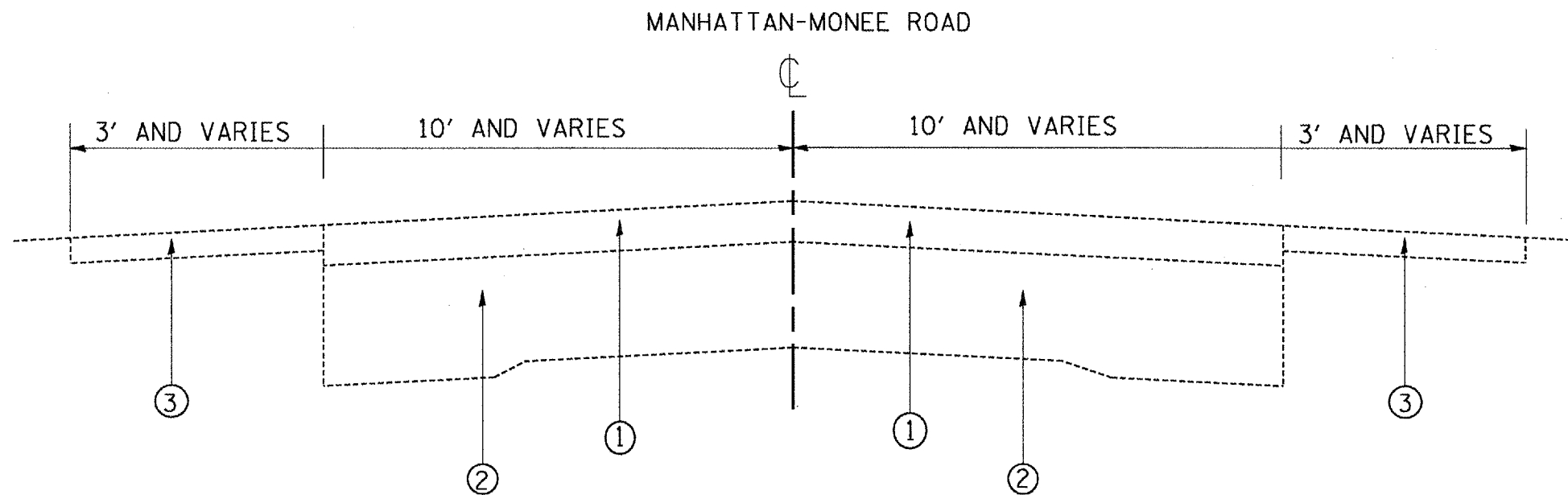
ILLINOIS DEPARTMENT OF TRANSPORTATION

INDEX OF SHEETS
STATE STANDARDS
GENERAL NOTES

 REV. 2-27-07

F.A.P. RTE.	SECTION	COUNTY	TOTAL SHEETS	SHEET NO.
531	2006-012 PCC-PP	WILL.	8	3
STA. 0+46		TO STA. 16+48		
FED. ROAD DIST. NO. 1 ILLINOIS FED. AID PROJECT				

FOR INFORMATION ONLY



LEGEND

- ① EXISTING HMA SURFACE, ± 3"
- ② EXISTING PCC BASE COURSE, 9"-6"-9"
- ③ EXISTING AGGREGATE SHOULDER

EXISTING TYPICAL SECTION
STA 0+00 TO 110+00

HMA MIXTURE REQUIREMENTS

CLASS D PATCH ALL TYPES **	MIXTURE TYPE	AC TYPE	AIR VOIDS (%)
TOP 2"	HOT-MIX ASPHALT SURFACE COURSE, MIX D, N70 (IL 9.5 MM)	PG 64-22	4% @ 70 GYR
BOTTOM 10"	HOT-MIX ASPHALT BINDER COURSE, IL-19.0, N70	PG 64-22	4% @ 70 GYR

• WHEN RAP EXCEEDS 20 %, THE NEW ASPHALT BINDER IN THE MIX SHALL BE PG 58-22

• PATCH IS FULL DEPTH FROM TOP OF EXISTING HMA SURFACE TO BOTTOM OF EXISTING PCC BASE COURSE

REVISIONS	
NAME	DATE

ILLINOIS DEPARTMENT OF TRANSPORTATION

MANHATTAN-MONEE ROAD TYPICAL SECTION

SCALE: VERT. NONE
HORIZ. DATE 2/23/2007

DRAWN BY: RK
CHECKED BY:

REV. 2/23/07 FG

ROUTE	SECTION	COUNTY	TOTAL SHEETS	SHEET NUMBER
FAP 531	2006-012 PCC-PP	WILL	8	4

CONTRACT 60B36

SUMMARY OF QUANTITIES

URBAN
100% STATE

CODE NUMBER	DESCRIPTION	UNIT	CONSTRUCTION TYPE CODE I000	TOTAL QUANTITY
44201785	CLASS D PATCHES, TYPE I, 12 INCH	SQ YD		35.3
44201789	CLASS D PATCHES, TYPE II, 12 INCH	SQ YD		219.8
44201794	CLASS D PATCHES, TYPE III, 12 INCH	SQ YD		351
44201796	CLASS D PATCHES, TYPE IV, 12 INCH	SQ YD		3058.5
67100100	MOBILIZATION	L SUM		1
70100450	TRAFFIC CONTROL AND PROTECTION, STANDARD 701201	L SUM		1
*78000200	THERMOPLASTIC PAVEMENT MARKING, LINE-4"	FOOT		850
67000400	ENGINEER'S FIELD OFFICE, TYPE A	CAL MO		2
*78100100	RAISED REFLECTIVE PAVEMENT MARKER	EACH		90
X0322467	TEMPORARY INFORMATION SIGNING FOR LANE CLOSURE	SQ FT		48

* SPECIALTY ITEMS

ILLINOIS DEPARTMENT OF TRANSPORTATION

MANHATTAN-MONEE ROAD
SUMMARY OF QUANTITIES

REV. 2-27-07

ROUTE	SECTION	COUNTY	TOTAL SHEETS	SHEET NUMBER
FAP 531	2006-012 PCC-PP	WILL	9	5

PATCHING SURVEY MANHATTAN-MONEE RD

CONTRACT 60B36

PATCH LOCATION NUMBER	STATION	LANE	Eastbound			TYPE
			SIZE (L X W)	AREA (SQ. YD.)		
1	0+25	1	16 x 8	14.2	II	
2	1+00	1	50 x 4	22.2	III	
3	1+60	1	50 x 4	22.2	III	
4	2+20	1	3 x 12	4.0	I	
5	2+42	1	3 x 12	4.0	I	
6	2+50	1	5 x 12	6.7	II	
7	3+25	1	4 x 12	5.3	II	
8	3+97	1	53 x 4	23.6	III	
9	4+58	1	50 x 10	55.6	IV	
10	5+01	1	50 x 3	16.6	III	
11	11+00	1	100 x 3	33.3	IV	
12	12+70	1	6 x 12	8.0	II	
13	14+50	1	5 x 4	2.2	I	
14	15+10	1	100 x 3	33.3	IV	
15	16+90	1	50 x 3	16.6	III	
16	17+50	1	3 x 3	3	I	
17	20+20	1	4 x 12	5.3	II	
18	20+50	1	60 x 3	20.0	III	
19	22+00	1	53 x 5	29.4	IV	
20	23+00	1	50 x 4	22.2	III	
21	23+60	1	4 x 10	4.4	I	
22	24+20	1	30 x 3	10.0	II	
23	26+15	1	30 x 4	13.3	II	
24	27+70	1	30 x 4	13.3	II	
25	28+60	1	160 x 3	53.3	IV	
26	32+60	1	10 x 4	4.4	I	
27	33+60	1	50 x 3	16.7	III	
28	34+60	1	19 x 4	8.4	II	
29	38+50	1	50 x 12	66.7	IV	
30	41+00	1	100 x 12	133.3	IV	
31	44+50	1	20 x 12	26.7	IV	
32	47+50	1	50 x 4	22.2	III	
TOTAL				720.4		

PATCH LOCATION NUMBER	STATION	LANE	Eastbound			TYPE
			SIZE (L X W)	AREA (SQ. YD.)		
33	49+50	1	10 x 4	4.4	I	
34	52+40	1	20 x 4	8.9	II	
35	55+00	1	30 x 4	13.3	II	
36	57+60	1	40 x 6	26.7	IV	
37	60+40	1	4 x 6	2.7	I	
38	61+10	1	20 x 4	8.9	II	
39	65+40	1	150 x 12	200.0	IV	
40	69+90	1	20 x 12	26.7	IV	
41	70+50	1	100 x 3	33.3	IV	
42	71+50	1	140 x 3	46.7	IV	
43	73+00	1	150 x 3	50.0	IV	
44	73+20	1	60 x 4	26.7	IV	
45	76+10	1	40 x 4	17.8	III	
46	78+80	1	60 x 4	26.7	IV	
47	81+50	1	40 x 4	17.8	III	
48	83+60	1	20 x 4	8.9	II	
49	84+00	1	90 x 4	40.0	IV	
50	84+90	1	60 x 4	26.7	IV	
51	86+00	1	10 x 4	4.4	I	
52	87+00	1	40 x 4	17.8	III	
53	88+00	1	70 x 4	31.1	IV	
54	91+10	1	20 x 4	8.9	II	
55	93+10	1	30 x 12	40.0	IV	
56	95+60	1	100 x 12	133.3	IV	
57	96+20	1	180 x 4	80.0	IV	
58	100+00	1	70 x 4	31.1	IV	
59	101+40	1	60 x 4	26.7	IV	
60	103+00	1	100 x 4	44.4	IV	
61	104+20	1	90 x 4	40.0	IV	
62	106+00	1	100 x 4	44.4	IV	
63	107+10	1	30 x 4	13.3	II	
64	108+10	1	50 x 4	22.2	III	
TOTAL				1123.8		

ILLINOIS DEPARTMENT OF TRANSPORTATION
**MANHATTAN-MONEE ROAD
PAVEMENT PATCHING SCHEDULE
1 OF 2**

Rev. 2/23/07 FG

ROUTE	SECTION	COUNTY	TOTAL SHEETS	SHEET NUMBER
FAP 531	2006-012 PCC-PP	WILL	8	6

CONTRACT 60B36

MANHATTAN-MONEE RD

PATCH LOCATION NUMBER	LANE	STATION	Westbound			
			SIZE (L X W)	AREA (SQ. YD.)	TYPE	
1	1	108+80	100	4	44.4	IV
2	1	106+00	50	4	22.2	IV
3	1	105+50	90	4	40	IV
4	1	103+60	10	4	4.4	I
5	1	103+10	20	4	8.8	II
6	1	101+50	50	4	22.2	IV
7	1	100+70	30	4	13.3	II
8	1	100+00	150	4	66.6	IV
9	1	99+10	60	4	26.6	IV
10	1	97+70	40	4	17.7	III
11	1	96+20	40	4	17.7	III
12	1	95+80	300	4	133.3	IV
13	1	93+20	70	4	31.1	IV
14	1	92+30	30	4	13.3	II
15	1	91+40	80	4	35.5	IV
16	1	91+40	90	4	40	IV
17	1	89+50	30	12	40	IV
18	1	89+10	50	4	22.2	IV
19	1	83+40	140	12	186.6	IV
20	1	81+60	60	4	26.6	IV
TOTAL					812.5	

MANHATTAN-MONEE RD

PATCH LOCATION NUMBER	LANE	STATION	Westbound			
			SIZE (L X W)	AREA (SQ. YD.)	TYPE	
1	1	79+20	80	4	35.5	IV
2	1	76+20	20	5	11.1	II
3	1	76+00	40	4	17.7	III
4	1	75+30	30	12	40	IV
5	1	73+70	70	12	93.3	IV
6	1	73+00	140	4	62.2	IV
7	1	71+60	60	12	80	IV
8	1	66+60	10	12	13.3	II
9	1	55+50	50	4	22.2	IV
10	1	53+80	40	4	17.7	III
11	1	51+70	60	4	26.6	IV
12	1	46+80	130	12	173.3	IV
13	1	45+20	120	3	40	IV
14	1	35+90	30	12	40	IV
15	1	32+80	60	4	26.6	IV
16	1	24+10	40	3	13.3	II
17	1	22+80	120	4	53.3	IV
18	1	21+20	170	4	75.5	IV
19	1	13+70	70	4	31.1	IV
20	1	11+60	210	4	93.3	IV
24		3+70	50	4	22.2	IV
TOTAL					988.2	

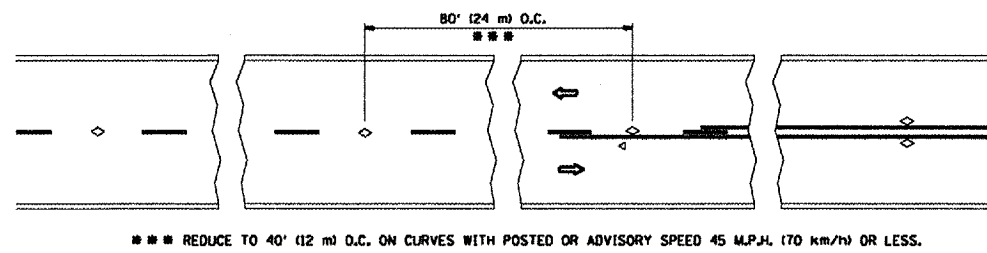
SCHEDULE TOTALS

CLASS D PATCHES TYPE I	35.3 SQ YD
CLASS D PATCHES, TYPE II	219.8 SQ YD
CLASS D PATCHES, TYPE III	351.0 SQ YD
CLASS D PATCHES, TYPE IV	3058.5 SQ YD
TOTAL	3664.6 SQ YD

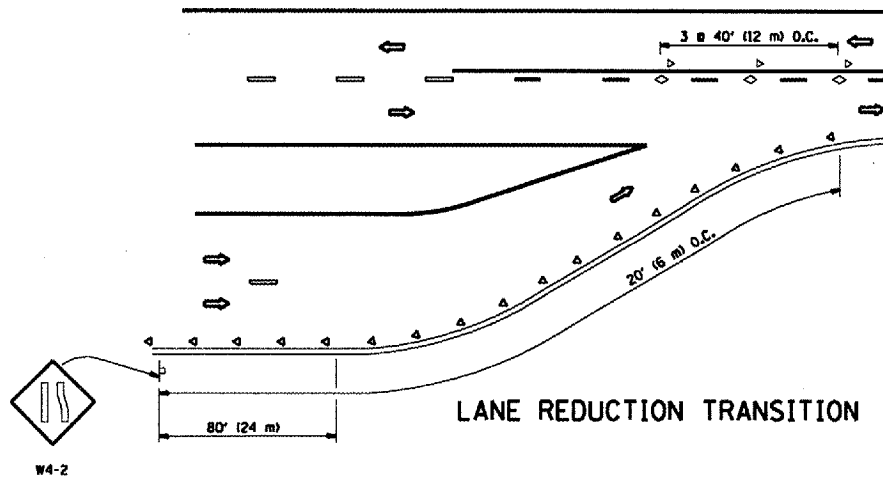
ILLINOIS DEPARTMENT OF TRANSPORTATION
**MANHATTAN-MONEE ROAD
PAVEMENT PATCHING SCHEDULE
2 OF 2**

Rev. 2/23/07 FG

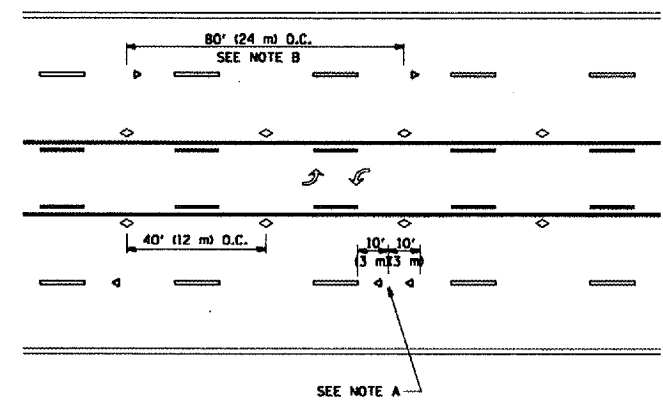
F.A.P. RTE.	SECTION	COUNTY	TOTAL SHEETS	SHEET NO.
531	2006-012 PCC-PP	WILL	8	8A
STA.		TO STA.		
FED. ROAD DIST. NO.	ILLINOIS	FED. AID PROJECT		



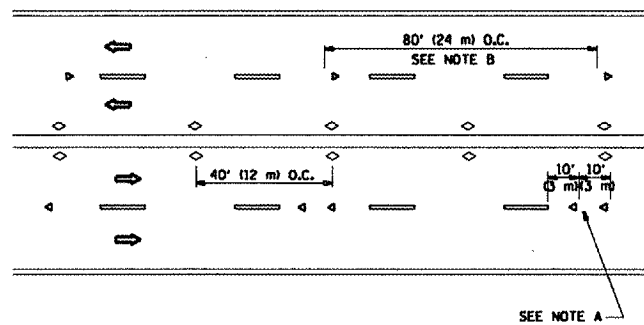
TWO-LANE/TWO-WAY



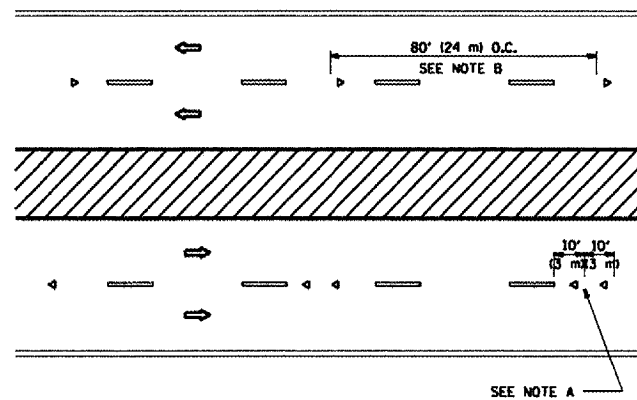
LANE REDUCTION TRANSITION



TWO-WAY LEFT TURN



MULTI-LANE/UNDIVIDED



MULTI-LANE/DIVIDED

GENERAL NOTES

1. MARKERS USED WITH DASHED LINES SHALL BE CENTERED IN THE GAP BETWEEN SEGMENTS.
2. MARKERS USED ADJACENT TO SOLID LINES SHALL BE OFFSET 2 TO 3 (50 TO 75) TOWARD TRAFFIC AS SHOWN.
3. MARKERS THROUGH TANGENTS LESS THAN 500' (150 m) IN LENGTH BETWEEN CURVES SHALL BE INSTALLED AT THE LESSER OF THE TWO CURVE SPACINGS.

SYMBOLS

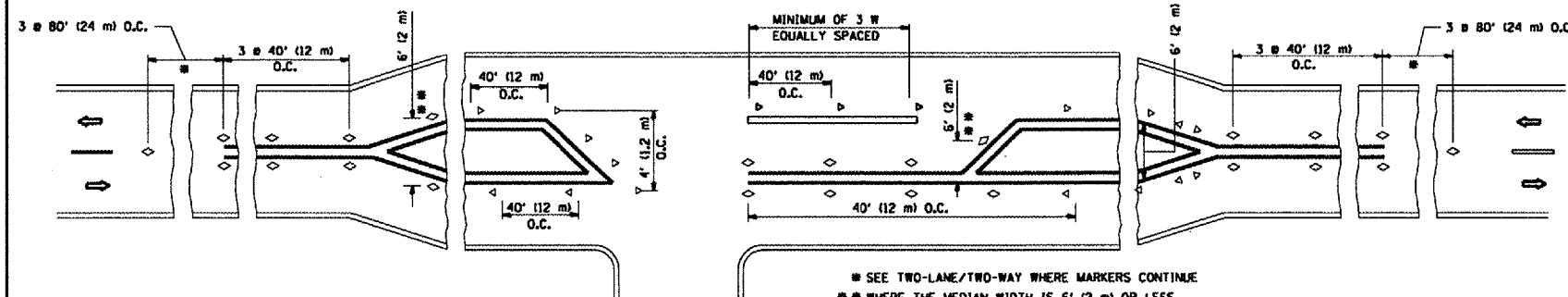
- YELLOW STRIPE
- WHITE STRIPE
- ◁ ONE-WAY AMBER MARKER
- ◁ ONE-WAY CRYSTAL MARKER (W/O)
- ◊ TWO-WAY AMBER MARKER

LANE MARKER NOTES

- A. USE DOUBLE LANE LINE MARKERS SPACED AS SHOWN.
- B. REDUCE TO 40' (12 m) O.C. ON CURVES WHERE ADVISORY SPEEDS ARE 10 M.P.H. (20 km/h) LOWER THAN POSTED SPEEDS.

DESIGN NOTES

1. DOUBLE LANE LINE MARKERS SHALL BE USED UNLESS SPECIFIED OTHERWISE.
2. EXCEPT AS SHOWN ON THE LANE REDUCTION TRANSITION AND FREEWAY EXIT RAMP DETAIL, MARKERS ARE NOT TO BE SPECIFIED ON RIGHT EDGE LINES.
3. THE EXACT MARKER LIMITS, SPACING, AND COLOR SHOULD BE INCLUDED IN THE PLANS.
4. MARKERS SHOULD NOT BE USED ALONGSIDE CURBS EXCEPT FOR EXTREMELY SHORT SECTIONS OF CURBS WHERE NOT MORE THAN TWO MARKERS WOULD BE INVOLVED.



LEFT TURN

All dimensions are in millimeters (inches) unless otherwise shown.

REVISIONS	
NAME	DATE
T. RAMMACHER	09-19-94
T. RAMMACHER	03-12-98
T. RAMMACHER	01-06-00

ILLINOIS DEPARTMENT OF TRANSPORTATION
TYPICAL APPLICATIONS
RAISED REFLECTIVE PAVEMENT
MARKERS (SNOW-PLOW RESISTANT)

SCALE: NONE
DATE: 2/23/2007

DRAWN BY CADD
CHECKED BY
TC-11

REVISION DATE: 01/06/00

ADDED SHEET REV. 2/23/07 FG