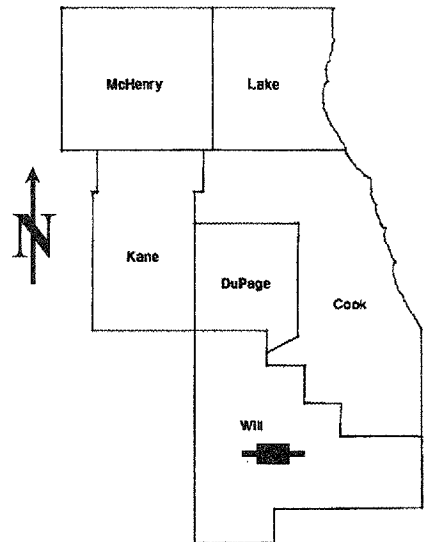


ROUTE	SECTION	COUNTY	TOTAL SHEETS	SHEET NUMBER
FAP 531	2006-012 PCC-PP	WILL	8	1

**STATE OF ILLINOIS
DEPARTMENT OF TRANSPORTATION
DIVISION OF HIGHWAYS
DISTRICT ONE**

CONTRACT NO. 60B36

D-91-326-06



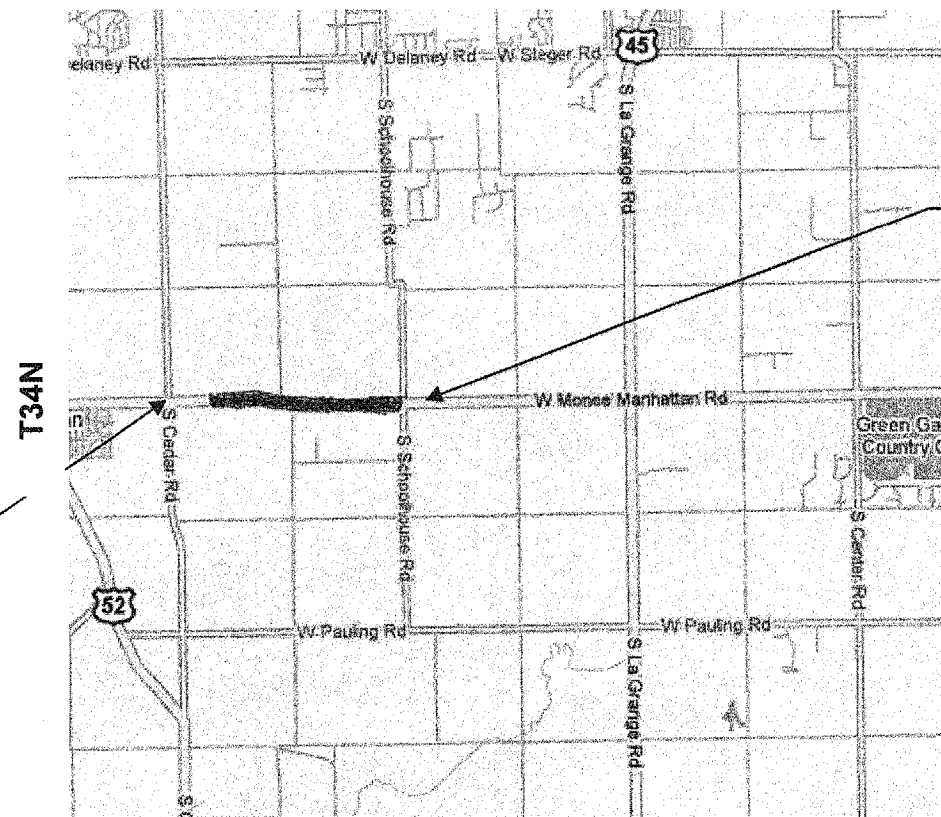
LOCATION OF IMPROVEMENT INDICATED THUS:

FOR INDEX OF SHEETS SEE SHEET 2

PROPOSED HIGHWAY PLANS
FAP ROUTE 531: MANHATTAN-MONEE RD.
SCHOOL RD. TO CEDAR RD.
SECTION: 2006-012 PCC-PP
HMA CLASS D PATCHING TO PCC PAVEMENT
WILL COUNTY
C-91-326-06

**IMPROVEMENT LOCATED IN
WILL COUNTY**

R11E/R12E



**IMPROVEMENT
ENDS:
STA. 110+00**

TRAFFIC DATA
SPEED LIMIT = 55 MPH
2004 ADT = 4700

**IMPROVEMENT
BEGINS:
STA. 0+00**

**STATE OF ILLINOIS
DEPARTMENT OF TRANSPORTATION
DIVISION OF HIGHWAYS**

SUBMITTED: Jan. 3 2007
Diane O'Keefe
DEPUTY DIRECTOR OF HIGHWAYS, REGION ENGINEER

February 2, 2007
Eric E. Harn
INTERIM ENGINEER OF DESIGN AND ENVIRONMENT

February 2, 2007
Milton R. Sees, P.E.
DIRECTOR, DIVISION OF HIGHWAYS

**PRINTED BY THE AUTHORITY
OF THE STATE OF ILLINOIS**

**J.U.L.I.E.: JOINT UTILITY LOCATION
INFORMATION FOR EXCAVATION
(800)892-0123**

1) NET & GROSS LENGTH OF IMPROVEMENT = 11,000 FT = 2.08 MILES

CONTRACT NO. 60B36

DISTRICT ONE - DESIGN - PLAN PREPARATION ENGINEER:
KEN ENG / ROBERT BORO (847) 705-4178

ROUTE	SECTION	COUNTY	TOTAL SHEETS	SHEET NUMBER
FAP 531	2006-012 PCC-PP	WILL	8	2

GENERAL NOTES

CONTRACT 60B36

INDEX OF SHEETS

<u>SHEET NO.</u>	<u>DESCRIPTION</u>
1	TITLE SHEET
2	INDEX OF SHEETS, STATE STANDARDS GENERAL NOTES
3	SUMMARY OF QUANTITIES
4	TYPICAL SECTION
5-6	PAVEMENT PATCHING SCHEDULE
7	TRAFFIC CONTROL AND PROTECTION FOR SIDE ROADS, INTERSECTIONS, AND DRIVEWAYS
8	DISTRICT ONE TYPICAL PAVEMENT MARKINGS

STATE STANDARDS

442201-02	CLASS C AND D PATCHES
701201-02	LANE CLOSURE, 2L, 2W, DAY ONLY, FOR SPEEDS ≥45 MPH
701301-02	LANE CLOSURE, 2L, 2W, SHORT TIME OPERATIONS
702001-00	

BEFORE STARTING ANY EXCAVATION, THE CONTRACTOR SHALL CALL "J.U.L.I.E." AT (800) 892-0123 FOR FIELD LOCATIONS OF BURIED ELECTRIC, TELEPHONE AND GAS UTILITIES. (48 HOUR NOTIFICATION IS REQUIRED).

THE CONTRACTOR SHALL COORDINATE CONSTRUCTION ACTIVITIES WITH UTILITY COMPANIES.

THE CONTRACTOR WILL NOT BE ALLOWED TO SET UP A YARD OR FIELD OFFICE ON STATE PROPERTY WITHOUT WRITTEN PERMISSION FROM THE DEPARTMENT.

BEFORE BEGINNING ANY WORK, THE CONTRACTOR SHALL RETAIN AND RECORD FOR FUTURE REFERENCES ALL EXISTING PAVEMENT MARKING LINES AND RAISED REFLECTIVE PAVEMENT MARKERS IN ORDER THAT THESE LOCATIONS CAN BE RE-ESTABLISHED FOR STRIPING. EXACT LOCATION OF ALL PAVEMENT MARKINGS SHALL BE AS DIRECTED BY THE ENGINEER.

IT SHALL BE THE CONTRACTOR'S RESPONSIBILITY TO VERIFY ALL DIMENSIONS AND CONDITIONS EXISTING IN THE FIELD PRIOR TO CONSTRUCTION AND ORDERING OF MATERIALS.

THE ENGINEER SHALL CONTACT CORA MATHIS, AREA TRAFFIC FIELD ENGINEER AT (815) 485-6475. A MINIMUM OF TWO (2) WEEKS PRIOR TO THE PLACEMENT OF PERMANENT PAVEMENT MARKING.

ALL DAMAGE TO EXISTING PAVEMENT MARKINGS OR RAISED REFLECTIVE PAVEMENT MARKERS OUTSIDE THE REMOVAL LINE SHOWN ON THE PLANS SHALL BE REPLACED AT THE CONTRACTOR'S EXPENSE.

THESE PLANS HAVE BEEN PREPARED FROM NOTES RECEIVED FROM THE BUREAU OF MAINTENANCE.

DO NOT SCALE PLANS FOR CONSTRUCTION DIMENSIONS.

THE CONTRACTOR SHALL CONTACT THE DISTRICT ONE TRAFFIC CONTROL SUPERVISOR AT (847)705-4470. A MINIMUM OF 72 HOURS IN ADVANCE OF BEGINNING WORK.

THE ENGINEER SHALL OBTAIN APPROVAL FROM THE DISTRICT ONE BUREAU CHIEF OF MAINTENANCE FOR ANY PROPOSED REVISIONS IN THE SCHEDULE PAVEMENT PATCHING LOCATIONS.

ILLINOIS DEPARTMENT OF TRANSPORTATION

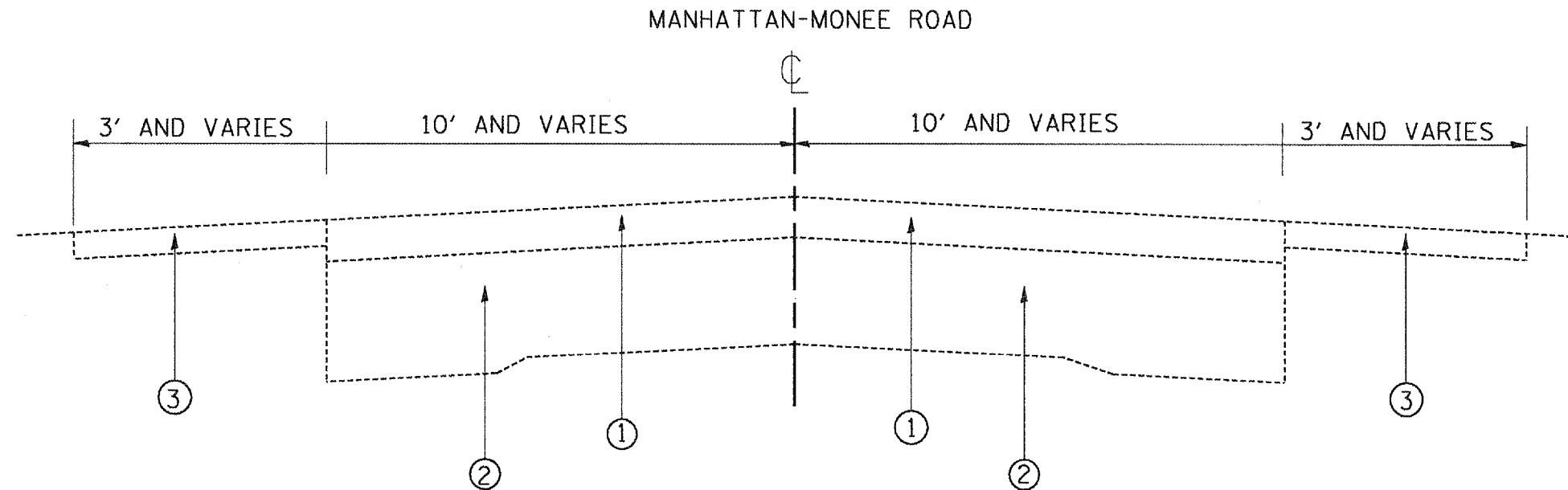
**INDEX OF SHEETS
STATE STANDARDS
GENERAL NOTES**

REF-
REF-
REF-

CONTRACT 60836

F.A.P. RTE.	SECTION	COUNTY	TOTAL SHEETS	SHEET NO.
531	2006-012 PCC-PP	WILL	8	3
STA. 0+46		TO STA. 16+48		
FED. ROAD DIST. NO. 1 ILLINOIS FED. AID PROJECT				

FOR INFORMATION ONLY



LEGEND

- ① EXISTING HMA SURFACE, ± 3"
- ② EXISTING PCC BASE COURSE, 9"-6"-9"
- ③ EXISTING AGGREGATE SHOULDER

EXISTING TYPICAL SECTION
STA 0+00 TO 110+00

HMA MIXTURE REQUIREMENTS

CLASS D PATCH ALL TYPES	MIXTURE TYPE	AC TYPE	AIR VOIDS (%)
TOP 2"	HOT-MIX ASPHALT SURFACE COURSE, MIX D, N70 (IL 9.5 MM)	PG 64-22	4% @ 70 GYR
BOTTOM 7"	HOT-MIX ASPHALT BINDER COURSE, IL-19.0, N70	PG 64-22 •	4% @ 70 GYR

• WHEN RAP EXCEEDS 20 %, THE NEW ASPHALT BINDER IN THE MIX SHALL BE PG 58-22

REVISIONS		ILLINOIS DEPARTMENT OF TRANSPORTATION
NAME	DATE	
		<p align="center">MANHATTAN-MONEE ROAD TYPICAL SECTION</p> <p>SCALE: VERT. NONE HORIZ. DATE 12/19/2006</p> <p align="right">DRAWN BY: RK CHECKED BY:</p>

ROUTE	SECTION	COUNTY	TOTAL SHEETS	SHEET NUMBER
FAP 531	2006-012 PCC-PP	WILL	8	4

CONTRACT 60B36

SUMMARY OF QUANTITIES

*URBAN
100% STATE*

CODE NUMBER	DESCRIPTION	UNIT	CONSTRUCTION TYPE CODE 1000 TOTAL QUANTITY
44201749	CLASS D PATCHES, TYPE I, 9 INCH	SQ YD	35.3
44201753	CLASS D PATCHES, TYPE II, 9 INCH	SQ YD	226.4
44201757	CLASS D PATCHES, TYPE III, 9 INCH	SQ YD	328.8
44201759	CLASS D PATCHES, TYPE IV, 9 INCH	SQ YD	3025.2
67100100	MOBILIZATION	L SUM	1
70100450	TRAFFIC CONTROL AND PROTECTION, STANDARD 701201	L SUM	1
*78000200	THERMOPLASTIC PAVEMENT MARKING, LINE-4"	FOOT	850
67000400	ENGINEER'S FIELD OFFICE, TYPE A	CAL MO	2
*78100100	RAISED REFLECTIVE PAVEMENT MARKER	EACH	90

* SPECIALTY ITEMS

ILLINOIS DEPARTMENT OF TRANSPORTATION

MANHATTAN-MONEE ROAD
SUMMARY OF QUANTITIES

ROUTE	SECTION	COUNTY	TOTAL SHEETS	SHEET NUMBER
FAP 531	2006-012 PCC-PP	WILL	8	5

PATCHING SURVEY MANHATTAN-MONEE RD

CONTRACT 60B36

PATCH LOCATION NUMBER	STATION	LANE	Eastbound			TYPE
			SIZE (L X W)	AREA (SQ. YD.)		
1	0+25	1	16 x 8	14.2	II	
2	1+00	1	50 x 4	22.2	III	
3	1+60	1	50 x 4	22.2	III	
4	2+20	1	3 x 12	4.0	I	
5	2+42	1	3 x 12	4.0	I	
6	2+50	1	5 x 12	6.7	II	
7	3+25	1	4 x 12	5.3	II	
8	3+97	1	53 x 4	23.6	III	
9	4+58	1	50 x 10	55.6	IV	
10	5+01	1	50 x 2	11.1	II	
11	11+00	1	100 x 3	33.3	IV	
12	12+70	1	6 x 12	8.0	II	
13	14+50	1	5 x 4	2.2	I	
14	15+10	1	100 x 2	22.2	III	
15	16+90	1	50 x 2	11.1	III	
16	17+50	1	2 x 2	0.4	I	
17	20+20	1	4 x 12	5.3	II	
18	20+50	1	60 x 3	20.0	III	
19	22+00	1	53 x 5	29.4	IV	
20	23+00	1	50 x 4	22.2	III	
21	23+60	1	4 x 10	4.4	I	
22	24+20	1	30 x 3	10.0	II	
23	26+15	1	30 x 4	13.3	II	
24	27+70	1	30 x 4	13.3	II	
25	28+60	1	160 x 3	53.3	IV	
26	32+60	1	10 x 4	4.4	I	
27	33+60	1	50 x 3	16.7	III	
28	34+60	1	19 x 4	8.4	II	
29	38+50	1	50 x 12	66.7	IV	
30	41+00	1	100 x 12	133.3	IV	
31	44+50	1	20 x 12	26.7	IV	
32	47+50	1	50 x 4	22.2	III	
TOTAL				695.7		

PATCH LOCATION NUMBER	STATION	LANE	Eastbound			TYPE
			SIZE (L X W)	AREA (SQ. YD.)		
33	49+50	1	10 x 4	4.4	I	
34	52+40	1	20 x 4	8.9	II	
35	55+00	1	30 x 4	13.3	II	
36	57+60	1	40 x 6	26.7	IV	
37	60+40	1	4 x 6	2.7	I	
38	61+10	1	20 x 4	8.9	II	
39	65+40	1	150 x 12	200.0	IV	
40	69+90	1	20 x 12	26.7	IV	
41	70+50	1	100 x 3	33.3	IV	
42	71+50	1	140 x 3	46.7	IV	
43	73+00	1	150 x 3	50.0	IV	
44	73+20	1	60 x 4	26.7	IV	
45	76+10	1	40 x 4	17.8	III	
46	78+80	1	60 x 4	26.7	IV	
47	81+50	1	40 x 4	17.8	III	
48	83+60	1	20 x 4	8.9	II	
49	84+00	1	90 x 4	40.0	IV	
50	84+90	1	60 x 4	26.7	IV	
51	86+00	1	10 x 4	4.4	I	
52	87+00	1	40 x 4	17.8	III	
53	88+00	1	70 x 4	31.1	IV	
54	91+10	1	20 x 4	8.9	II	
55	93+10	1	30 x 12	40.0	IV	
56	95+60	1	100 x 12	133.3	IV	
57	96+20	1	180 x 4	80.0	IV	
58	100+00	1	70 x 4	31.1	IV	
59	101+40	1	60 x 4	26.7	IV	
60	103+00	1	100 x 4	44.4	IV	
61	104+20	1	90 x 4	40.0	IV	
62	106+00	1	100 x 4	44.4	IV	
63	107+10	1	30 x 4	13.3	II	
64	108+10	1	50 x 4	22.2	III	
TOTAL				1123.8		

ILLINOIS DEPARTMENT OF TRANSPORTATION
**MANHATTAN-MONEE ROAD
PAVEMENT PATCHING SCHEDULE
1 OF 2**

ROUTE	SECTION	COUNTY	TOTAL SHEETS	SHEET NUMBER
FAP 531	2006-012 PCC-PP	WILL	8	6

CONTRACT 60B36

MANHATTAN-MONEE RD

PATCH LOCATION NUMBER	LANE	STATION	Westbound			TYPE
			SIZE (L X W)	AREA (SQ. YD.)		
1	1	108+80	100	4	44.4	IV
2	1	106+00	50	4	22.2	IV
3	1	105+50	90	4	40	IV
4	1	103+60	10	4	4.4	I
5	1	103+10	20	4	8.8	II
6	1	101+50	50	4	22.2	IV
7	1	100+70	30	4	13.3	II
8	1	100+00	150	4	66.6	IV
9	1	99+10	60	4	26.6	IV
10	1	97+70	40	4	17.7	III
11	1	96+20	40	4	17.7	III
12	1	95+80	300	4	133.3	IV
13	1	93+20	70	4	31.1	IV
14	1	92+30	30	4	13.3	II
15	1	91+40	80	4	35.5	IV
16	1	91+40	90	4	40	IV
17	1	89+50	30	12	40	IV
18	1	89+10	50	4	22.2	IV
19	1	83+40	140	12	186.6	IV
20	1	81+60	60	4	26.6	IV
TOTAL					812.5	

MANHATTAN-MONEE RD

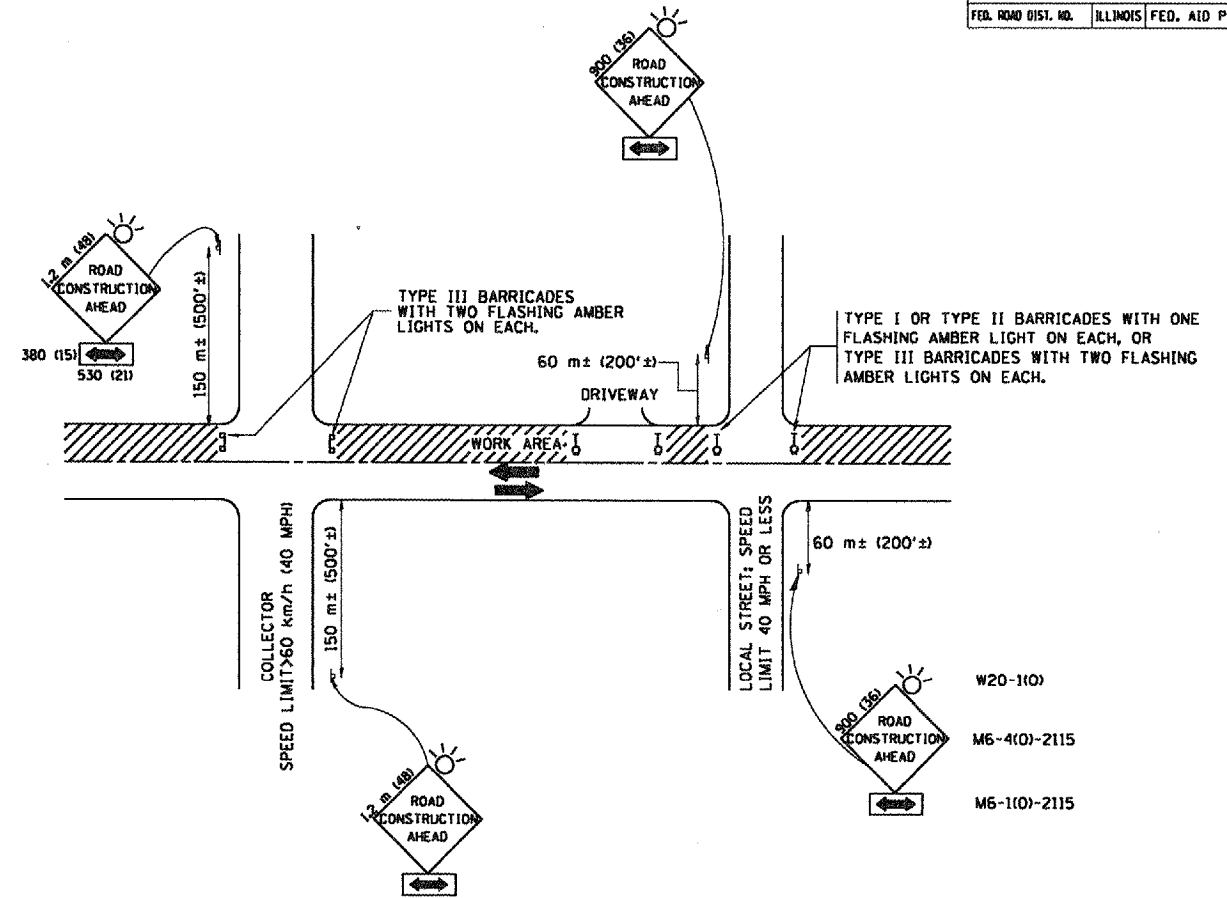
PATCH LOCATION NUMBER	LANE	STATION	Westbound			TYPE
			SIZE (L X W)	AREA (SQ. YD.)		
1	1	79+20	80	4	35.5	IV
2	1	76+20	20	5	11.1	II
3	1	76+00	40	4	17.7	III
4	1	75+30	30	12	40	IV
5	1	73+70	70	12	93.3	IV
6	1	73+00	140	4	62.2	IV
7	1	71+60	60	12	80	IV
8	1	66+60	10	12	13.3	II
9	1	55+50	50	4	22.2	IV
10	1	53+80	40	4	17.7	III
11	1	51+70	60	4	26.6	IV
12	1	46+80	130	12	173.3	IV
13	1	45+20	120	3	40	IV
14	1	35+90	30	12	40	IV
15	1	32+80	60	4	26.6	IV
16	1	24+10	40	2	8.8	II
17	1	22+80	120	4	53.3	IV
18	1	21+20	170	4	75.5	IV
19	1	13+70	70	4	31.1	IV
20	1	11+60	210	4	93.3	IV
24		3+70	50	4	22.2	IV
TOTAL					983.7	

SCHEDULE TOTALS

CLASS D PATCHES TYPE I	35.3 SQ YD
CLASS D PATCHES, TYPE II	226.4 SQ YD
CLASS D PATCHES, TYPE III	328.8 SQ YD
CLASS D PATCHES, TYPE IV	3025.2 SQ YD
TOTAL	3615.7 SQ YD

ILLINOIS DEPARTMENT OF TRANSPORTATION
**MANHATTAN-MONEE ROAD
PAVEMENT PATCHING SCHEDULE
2 OF 2**

F.A.P. RTE.	SECTION	COUNTY	TOTAL SHEETS	SHEET NO.
531	2004-012 PCC-PP	WILL	8	7
STA.		TO STA.		
FED. ROAD DIST. NO.	ILLINOIS	FED. AID PROJECT		



TRAFFIC CONTROL AND PROTECTION FOR SIDE ROADS, INTERSECTIONS, AND DRIVEWAYS

NOTES:

A. FOR NO LANE RESTRICTION ON THE SIDE ROAD OR DRIVEWAYS

1. SIDE ROAD WITH A SPEED LIMIT OF 60 km/h (40 MPH) OR LESS AS SHOWN ON THE DRAWING AND AS DIRECTED BY THE ENGINEER:

a) ONE ROAD CONSTRUCTION AHEAD SIGN 900x900 (36x36) WITH A FLASHER AND FLAG MOUNTED ON IT APPROXIMATELY 60 m (200') IN ADVANCE OF THE MAIN ROUTE.

b) THE CLOSED PORTION OF THE MAIN ROUTE SHALL BE PROTECTED BY BLOCKING WITH TYPE I, TYPE II OR TYPE III BARRICADES, 1/3 OF THE CROSS SECTION OF THE CLOSED PORTION.

2. SIDE ROAD WITH A SPEED LIMIT GREATER THAN 60 km/h (40 MPH) AS SHOWN ON THE DRAWING AND AS DIRECTED BY THE ENGINEER:

a) ONE ROAD CONSTRUCTION AHEAD SIGN 1.2 m x 1.2 m (48x48) WITH A FLASHER MOUNTED ON IT APPROXIMATELY 150 m (500') IN ADVANCE OF THE MAIN ROUTE.

b) THE CLOSED PORTION OF THE MAIN ROUTE SHALL BE PROTECTED BY BLOCKING WITH TYPE III BARRICADES, 1/2 OF THE CROSS SECTION OF THE CLOSED PORTION.

3. WHEN THE SIDE ROAD LIES BETWEEN THE BEGINNING OF THE MAINLINE SIGNING AND THE WORK ZONE, A SINGLE HEADED ARROW (M6-1) SHALL BE USED IN LIEU OF THE DOUBLE HEADED ARROW (M6-4).

B. FOR A LANE CLOSURE ON A SIDE ROAD OR DRIVEWAY:

USE APPLICABLE PORTIONS OF THE TYPICAL APPLICATION OF TRAFFIC CONTROL DEVICES (STD. 701501, STD. 701606 OR THE APPROPRIATE STANDARD). THE SPACING OF SIGNS AND BARRICADES SHALL BE ADJUSTED FOR FIELD CONDITIONS AS DIRECTED BY THE ENGINEER. THE DIRECTIONAL ARROW SHALL BE COVERED OR REMOVED WHEN NO LONGER CONSISTENT WITH THE SIDE ROAD LANE CLOSURE.

C. ADVANCE WARNING SIGNS ARE TO BE OMITTED ON DRIVEWAY UNLESS OTHERWISE NOTED.

D. THE TRAFFIC CONTROL AND PROTECTION FOR SIDE ROADS, INTERSECTIONS, AND DRIVEWAYS SHALL BE INCIDENTAL TO THE COST OF SPECIFIED TRAFFIC CONTROL STANDARDS OR ITEMS.

REVISIONS	
NAME	DATE
LHA	6/89
T. RAMMACHER	05/08/94
J. OBERLE	10/18/95
A. HOUSEH	03/06/96
A. HOUSEH	10/15/96
T. RAMMACHER	01/06/00

ILLINOIS DEPARTMENT OF TRANSPORTATION
**TRAFFIC CONTROL AND PROTECTION
 FOR
 SIDE ROADS, INTERSECTIONS, AND
 DRIVEWAYS**

SCALE:
 DATE: 12/19/2006

DRAWN BY
 CHECKED BY
 TC-10

REVISION DATE: 01/06/00

PLOT DATE: 12/19/2006
 FILE NAME: N:\projects\60836\user\p\11\exam\p\04\exam\supp\all\Bldg.p
 PLOT SCALE: 1/8"=1'-0"
 USER NAME: gill\lucasmf

