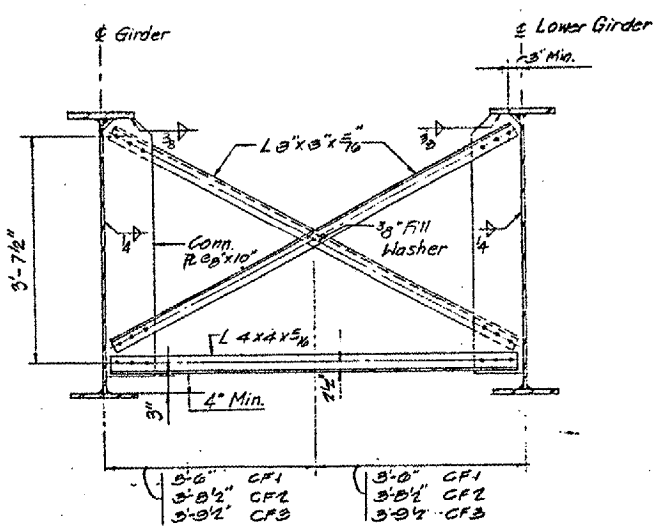
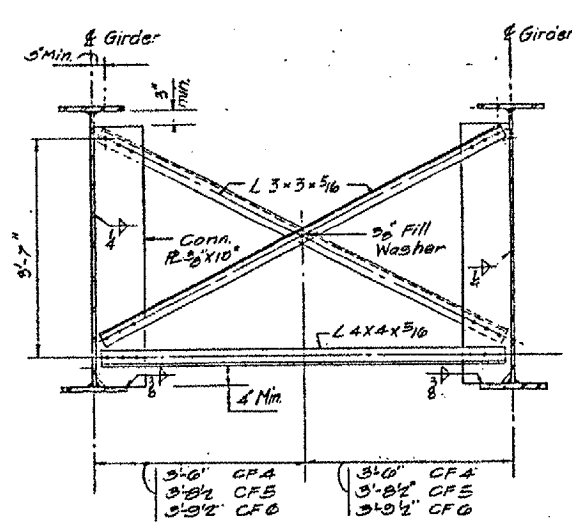


ROUTE	SECTION	COUNTY	TOTAL SHEETS	SHEET NUMBER
VARIOUS	2006-018 BP	VARIOUS	27	17

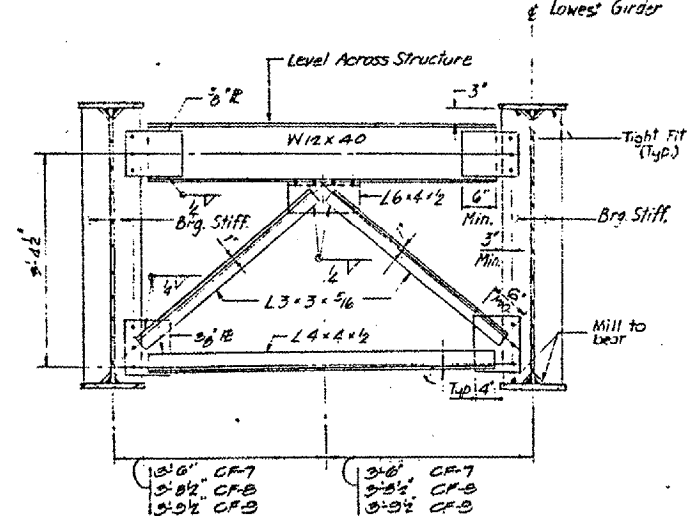
CONTRACT NO.: 60B43



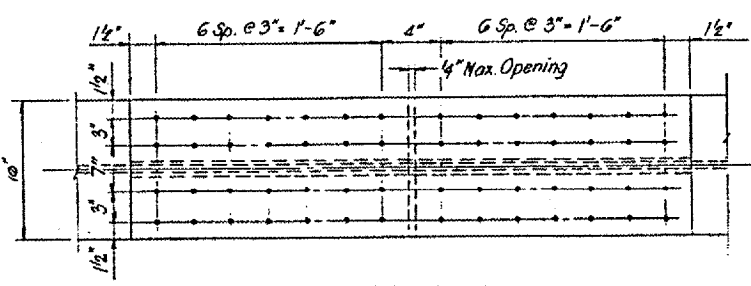
CROSS FRAME - CF1, CF2 & CF3
 CF1 (32 REQ'D)
 CF2 (8 REQ'D)
 CF3 (32 REQ'D)



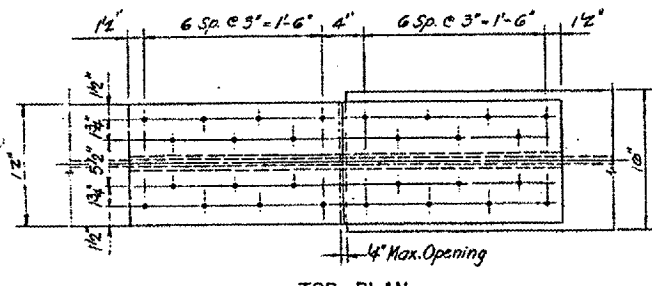
CROSS FRAME - CF4, CF5 & CF6
 CF4 (10 REQ'D)
 CF5 (4 REQ'D)
 CF6 (10 REQ'D)



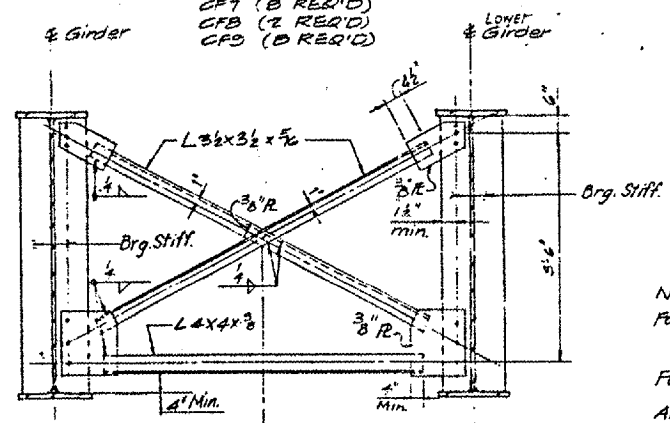
END CROSS FRAME - CF7, CF8 & CF9
 CF7 (8 REQ'D)
 CF8 (2 REQ'D)
 CF9 (8 REQ'D)



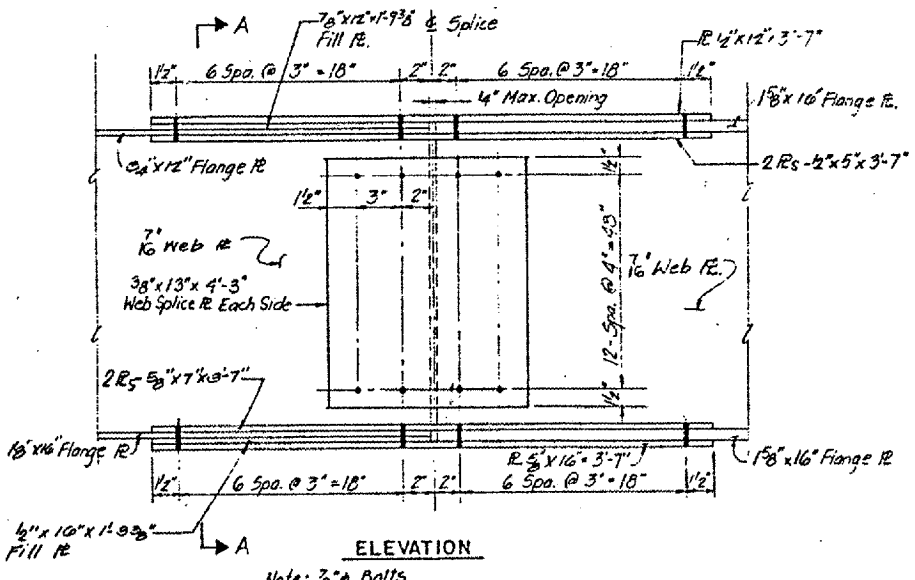
BOTTOM PLAN



TOP PLAN

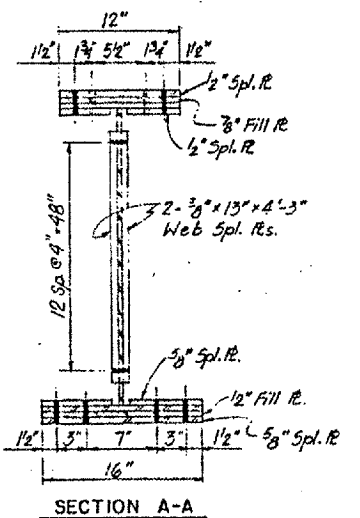


CROSS FRAME - CF10, CF11 & CF12
 CF10 (8 REQ'D)
 CF11 (2 REQ'D)
 CF12 (8 REQ'D)

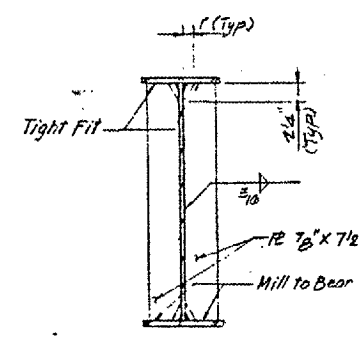


ELEVATION
 Note: 3/8" Bolts

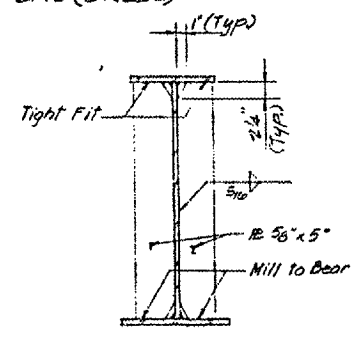
TYPICAL GIRDER SPLICE



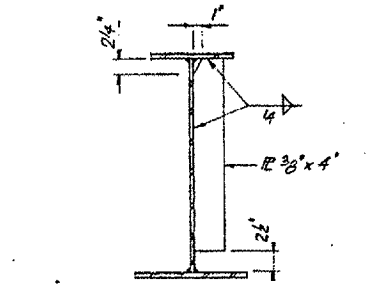
SECTION A-A



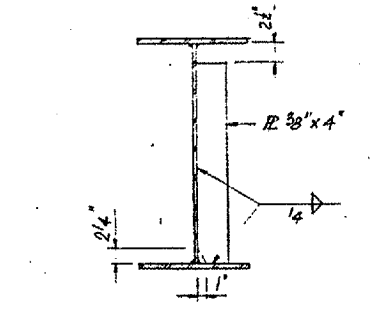
BEARING STIFFENER AT PIERS



BEARING STIFFENER AT ABUTMENTS



INTERMEDIATE STIFFENER IN SPANS



INTERMEDIATE STIFFENER NEAR PIERS

Notes:
 For Cross frame Connection:
 Use 1 1/2" gages for all 3/8" bolts. Hardened washers shall be required over all bolts in cross frame.
 For Girder Splice:
 1 1/2" gage for 3/8" bolts.
 All bolts to be M-16 F.
 1 1/2" long slotted holes, 1/8" wider than bolt diameter shall be used in one of the connected parts between girder 5 and 6. These slotted holes shall have 5/16" structural plate washers placed over them.
 The bolts for the slotted holes shall only be finger-tightened prior to the deck slab pouring and then be fully tightened after the completion of the pouring.

LOCATION NO. 4
EXIST. BRIDGE PLANS
ILL. 62 OVER FOX RIVER
SN: 056-0059