

INDEX OF SHEETS

SHEET	DESCRIPTION
1	COVER SHEET, INDEX OF SHEETS, LIST OF ILLINOIS DOT HIGHWAY STANDARDS
2	GENERAL NOTES AND PROJECT COMMITMENTS
3	SUMMARY OF QUANTITIES
4-14	ALIGNMENT PLANS, SURVEY TIES AND CONTROL POINTS
15-15B	MEDALLION DETAILS AND NAME PLATE DETAILS
16	MOUNTING DETAIL
17-46	SURFACE ART MEDALLION LOCATION PLANS

DESIGN NUMBER

D-91-261-05

IDOT HIGHWAY STANDARDS

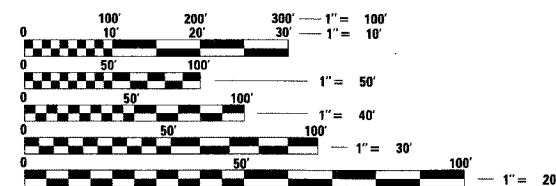
STANDARD	DESCRIPTION
000001-04	STANDARD SYMBOLS, ABBREVIATIONS, AND PATTERNS
001006	DECIMAL OF AN INCH AND OF A FOOT

PROJECT LOCATED IN CITY OF CHICAGO

DESIGN DESIGNATION

NB LOCAL LANES: 8568 (35) URBAN INTERSTATE 264.46 (CRC-30)
 SB LOCAL LANES: 6042 (35) URBAN INTERSTATE 264.46 (CRC-30)

	ADT (2020)	DESIGN SPEED	POSTED SPEED
NB LOCAL LANES	140,775	60	45
SB LOCAL LANES	122,330	60	45



FULL SIZE PLANS HAVE BEEN PREPARED USING STANDARD ENGINEERING SCALES. REDUCED SIZED PLANS WILL NOT CONFORM TO STANDARD SCALES. IN MAKING MEASUREMENTS ON REDUCED PLANS, THE ABOVE SCALES MAY BE USED.

DIGGER:
 CHICAGO UTILITY ALERT NETWORK
 (312) 744-7000

CONTRACT NO. 60C02

STATE OF ILLINOIS
 DEPARTMENT OF TRANSPORTATION
 DIVISION OF HIGHWAYS

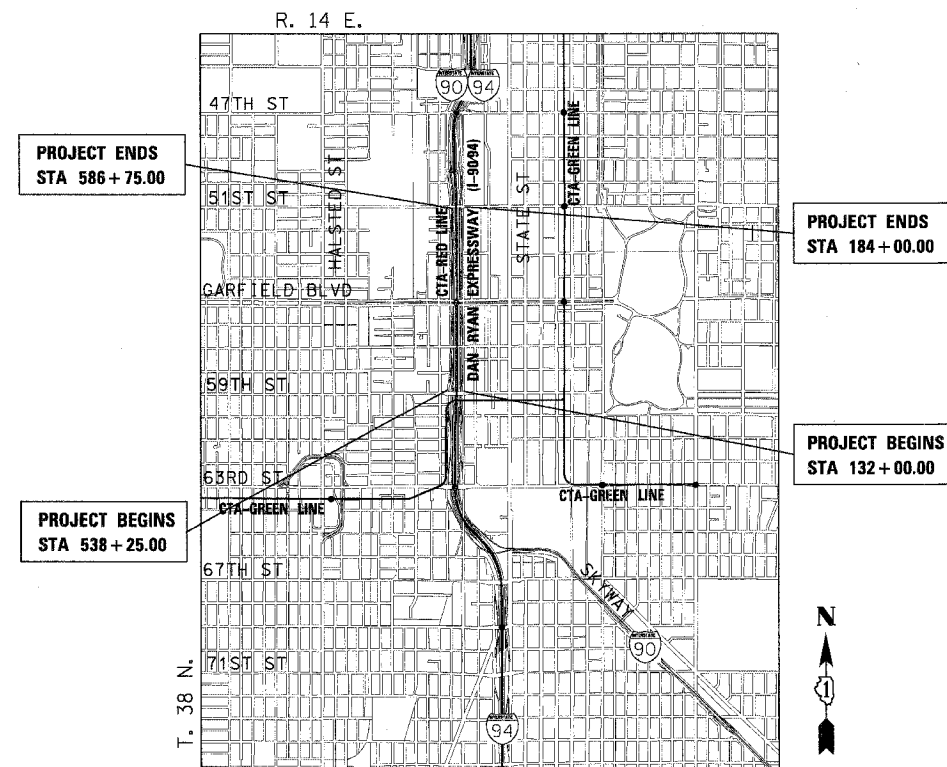
**PLANS FOR PROPOSED
 FEDERAL AID HIGHWAY**

F.A.I. ROUTE 90/94 (DAN RYAN EXPRESSWAY)
 SECTION 2006-040 I

**PROJECT
 INSTALLATION OF SURFACE ART MEDALLIONS
 59TH STREET TO 51ST STREET
 COOK COUNTY
 C-91-095-07**

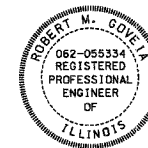


LOCATION OF SECTION INDICATED THUS: [Symbol]



LOCATION MAP

0 1/2 MILE 1 MILE
 1" = 1/2 MILE
 GROSS LENGTH OF PROJECT = 10,050 FT (1.903 MILES)
 NET LENGTH OF PROJECT = 10,050 FT (1.903 MILES)



Robert M. Goveia
 ROBERT M. GOVEIA
 11/30/07 EXPIRES
 10/22/06 DATE

STATE OF ILLINOIS
 DEPARTMENT OF TRANSPORTATION
 DIVISION OF HIGHWAYS

SUBMITTED OCT. 25 20 06

Diane O'Keefe
 DEPUTY DIRECTOR OF HIGHWAYS, REGION ENGINEER

Ernie E. Hahn
 ENGINEER OF DESIGN AND ENVIRONMENT
 February 2, 20 07

Milton R. Sew
 DIRECTOR OF HIGHWAYS, CHIEF ENGINEER
 February 2, 20 07

**PRINTED BY THE AUTHORITY
 OF THE STATE OF ILLINOIS**



DISTRICT ONE DESIGN/CONSULTANT SERVICES PROJECT MANAGER
 RAJENDRA SHAH (847) 705-4555