

ALL DIMENSIONS IN METERS EXCEPT PAY ITEMS AND UNLESS NOTED OTHERWISE

F.A.I. RTE.	SECTION	COUNTY	TOTAL SHEETS	SHEET NO.
80/94	2003-106LS	COOK/LAKE	88	11
STA.	TO STA.			
FED. ROAD DIST. NO.	ILLINOIS	FED. AID PROJECT		
CONTRACT NO. 62669				

BM* 6E SQUARE CUT IN NORTHWEST CORNER OF SOUTHWEST HANDRAIL (J-WALL) AT THE SOUTHWEST ABUTMENT OF I-80 BRIDGE OVER BURNHAM AVENUE. STATION 6+741.2 OFFSET 18.0 RT ELEVATION = 187.309

TBM* 101 SET CUT BOX TOP OF BARRIER WALL ON WESTBOUND I-80. NORTHWEST CORNER OF WALL AT EMERGENCY ACCESS (JACKSON AVENUE), 421.3M WEST OF TBM 100, MILE MARKER 0.6. STATION 8+927.1 OFFSET 28.4 LT ELEVATION = 183.680

TBM* 102 SET CUT BOX AT NORTHEAST CORNER OF NORTHEAST WINGWALL OVER LITTLE CALUMET RIVER BRIDGE, WESTBOUND I-80 MILE MARKER 0.4. STATION 8+587.3 OFFSET 22.4 LT ELEVATION = 191.619

TBM* 103 SET CUT BOX AT SOUTHWEST CORNER OF NORTHWEST WINGWALL OVER LITTLE CALUMET RIVER BRIDGE, WESTBOUND I-80 +/- 70M EAST OF MILE MARKER 0.2. STATION 8+407.2 OFFSET 20.6 LT ELEVATION = 191.662

TBM* 106 CHISELED X ON SIGN BOLT (SOUTHWEST). SIGN READS "CALUMET CITY LANSING EXIT 161" WESTBOUND I-80 ACROSS FROM MILE MARKER 163.01; LIGHT POLE #AD3. STATION 7+145.5 OFFSET 20.0 LT ELEVATION = 182.212

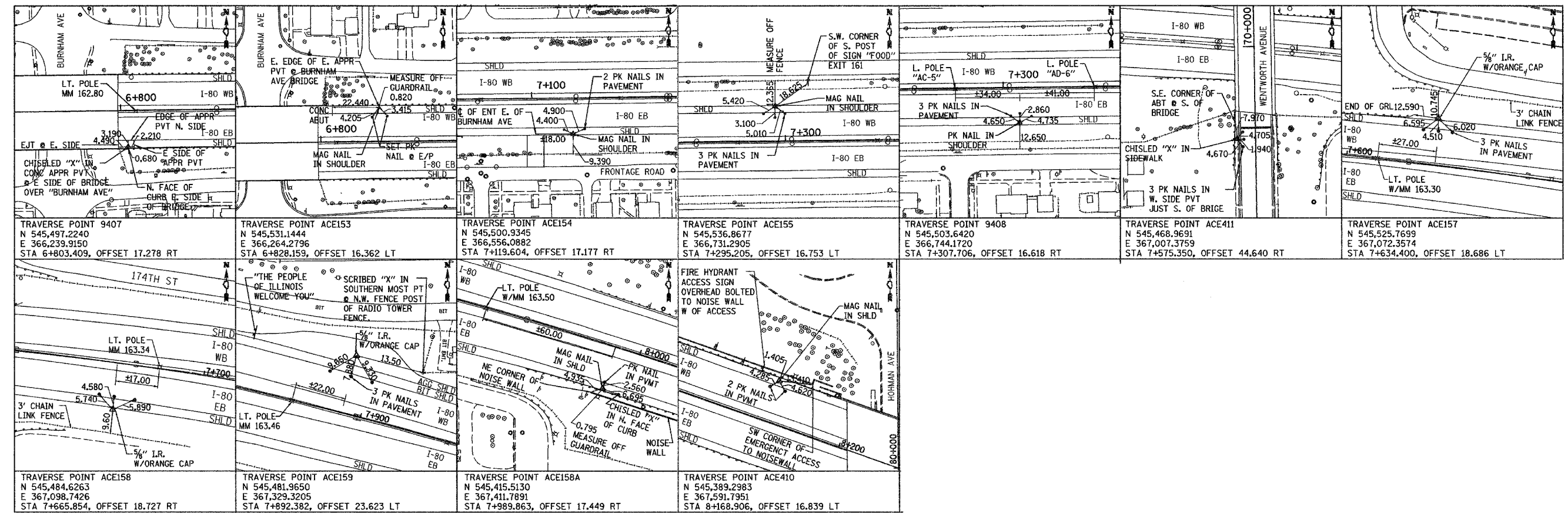
TBM* 208 CHISELED BOX ON SOUTHEAST CORNER OF CONCRETE BASE OF ILLINOIS DEPARTMENT OF TRANSPORTATION SYSTEM CONTROL BOX, LOCATED SOUTH SIDE OF I-80 +/- 200M WEST OF WENTWORTH AVENUE. STATION 7+427.8 OFFSET 28.4 RT ELEVATION = 182.074

TBM* 209 CHISELED SQUARE IN TOP OF CONCRETE BARRIER WALL ± 1.2 M EAST OF THE WEST END AND AT THE WEST END OF THE SOUTH PIER OF WENTWORTH AVE BRIDGE OVER I-80. ELEVATION = 181.597

TBM* 210 CHISELED BOX ON SOUTH FACE OF METAL BASE OF LIGHT POLE #AC12 ON CENTER OF JERSEY WALL +/- 200 M EAST OF WENTWORTH AVENUE. STATION 7+809.5 OFFSET 0.0 ELEVATION = 183.748

TBM* 211 CHISELED SQUARE IN NORTHEAST CORNER OF CONCRETE RETAINING WALL FOUNDATION ± 50 M EAST OF THE ILLINOIS/INDIANA STATE LINE SOUTH SIDE EASTBOUND I-80. ELEVATION = 182.386

TBM* 212 CHISELED SQUARE IN NORTHEAST CORNER OF THE SOUTHEAST WINGWALL EASTBOUND I-80 BRIDGE OVER HOHMAN AVE. ELEVATION = 189.171



12/12/2006
 6:34:57 PM
 C:\Project\20100801\CADD\Contract LS\101000276.rvt

ILLINOIS DEPARTMENT OF TRANSPORTATION
 I-80/94/US 6
 KINGERY-BORMAN EXPRESSWAY
 BURNHAM ROAD TO US 41
TIES AND BENCHMARKS
 I-80 /94 /US 6

REVISIONS	
NAME	DATE

SCALE NTS
 DATE 12/13/06

DRAWN BY ACE/CAD
 CHECKED BY TJW