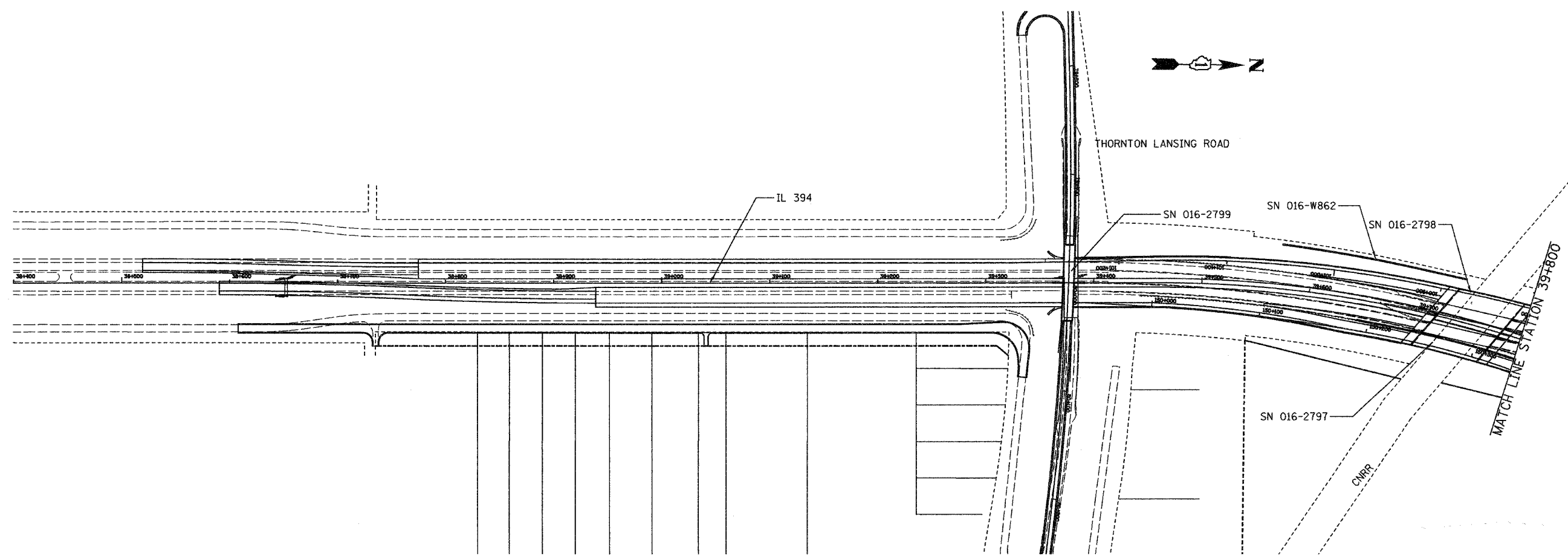


F.A.I. RTE.	SECTION	COUNTY	TOTAL SHEETS	SHEET NO.
80/94	2003-0891	COOK	88	84
STA.	TO STA.			
FED. ROAD DIST. NO.	ILLINOIS	FED. AID PROJECT		



FOR INFORMATION ONLY

REVISIONS	
NAME	DATE

ILLINOIS DEPARTMENT OF TRANSPORTATION
 I-80/94/US 6 (KINGERY EXPRESSWAY)
 ROADWAY LIGHTING
 AND TRAFFIC SURVEILLANCE

STRUCTURE LOCATION PLAN
STA. 38+400 TO 39+800

SCALE 1:2000 DRAWN BY ACE/CAD
 DATE 12/03 CHECKED BY TJW

AMERICAN
 CONSULTING ENGINEERS