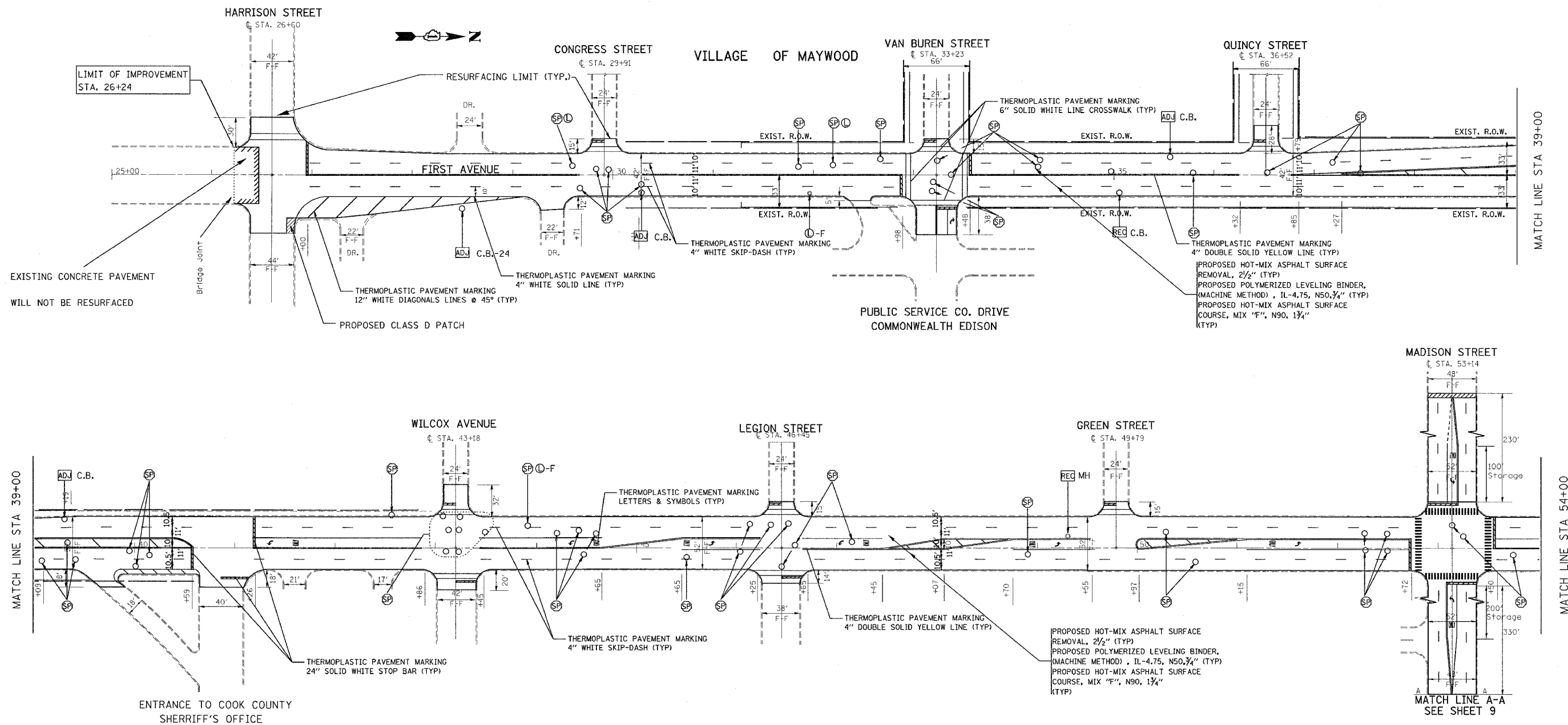


F. & U. RITE.	SECTION	COUNTY	TOTAL SHEETS	SHEET NO.
372	3091 RS-4	COOK	27	7
STA.	26+20	TO STA.	85+00	
FED. ROAD DIST. NO.	ILLINOIS	FED. AID PROJECT		

C62728



NOTE:

1. ALL PAVEMENT MARKING SHALL BE THERMOPLASTIC UNLESS OTHERWISE NOTED. SEE DISTRICT DETAIL TC-13.
2. RAISED REFLECTIVE PAVEMENT MARKERS SHALL BE USED THROUGHOUT THE IMPROVEMENT LIMITS. DOUBLE LANE LINE MARKERS SHALL BE INSTALLED, SEE DIST. DETAIL TC-11.

REVISIONS	
NAME	DATE

ILLINOIS DEPARTMENT OF TRANSPORTATION
IL-171 (1ST AVENUE)
I-290 TO LAKE ST.
PLAN SHEET

SCALE: VERT. NONE
 HORIZ. DATE APRIL 9, 2004

DRAWN BY S.E.S.
 CHECKED BY R.W.

3-FEB-89 14:07:20
 ZF4C10101610134688AADDGNI
 LEVELS = 38