

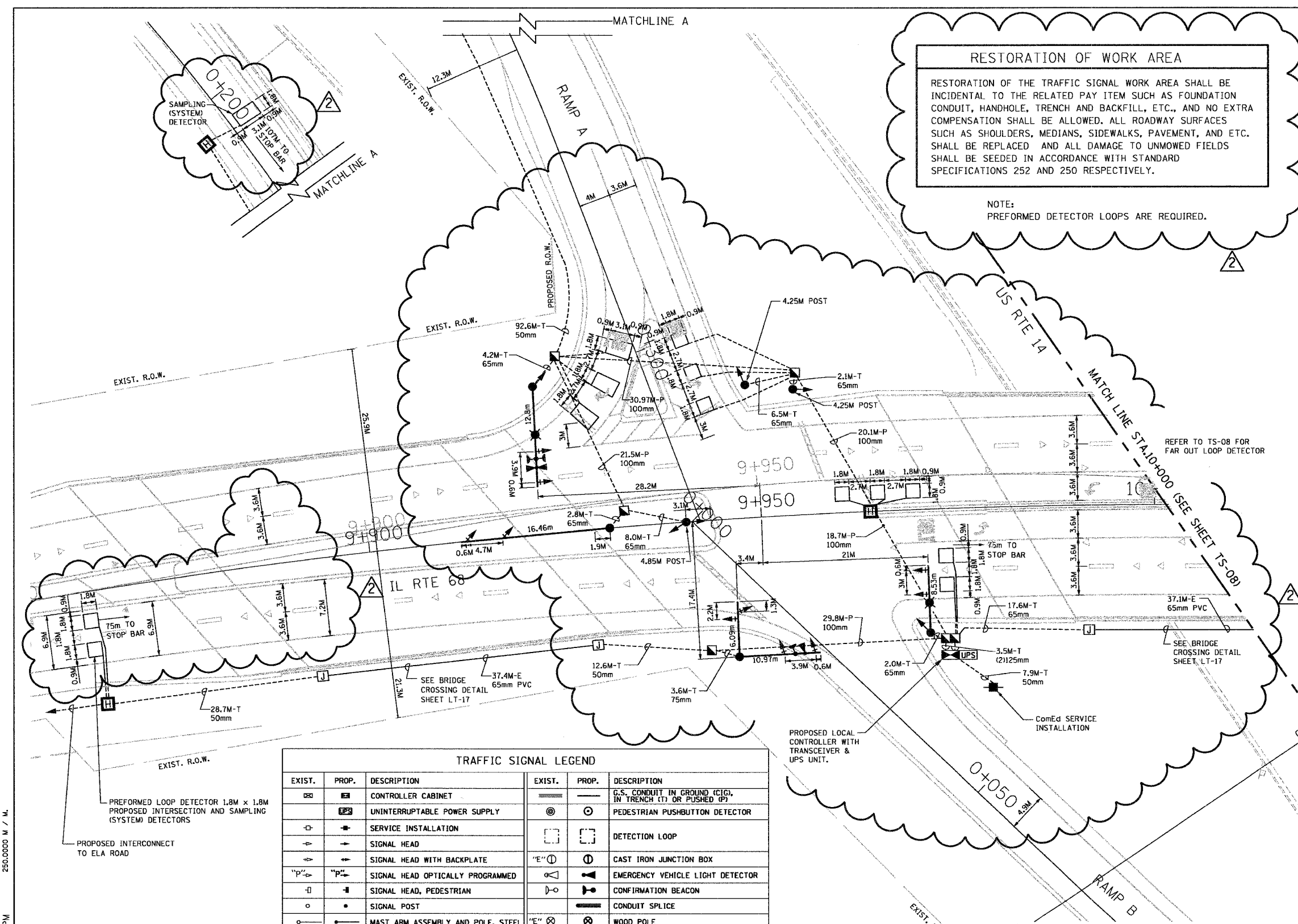
F.A.P. RTE.	SECTION	COUNTY	TOTAL SHEETS	SHEET NO.
343	*	COOK	283	118
STA.		TO STA.		
FED. ROAD DIST. NO. 1		ILLINOIS FED. AID PROJECT		62897
* 700-Y-R & 70HB-R-1				

KEY PLAN

RESTORATION OF WORK AREA

RESTORATION OF THE TRAFFIC SIGNAL WORK AREA SHALL BE INCIDENTAL TO THE RELATED PAY ITEM SUCH AS FOUNDATION CONDUIT, HANDHOLE, TRENCH AND BACKFILL, ETC., AND NO EXTRA COMPENSATION SHALL BE ALLOWED. ALL ROADWAY SURFACES SUCH AS SHOULDERS, MEDIANS, SIDEWALKS, PAVEMENT, AND ETC. SHALL BE REPLACED AND ALL DAMAGE TO UNMOWED FIELDS SHALL BE SEEDED IN ACCORDANCE WITH STANDARD SPECIFICATIONS 252 AND 250 RESPECTIVELY.

NOTE:
PREFORMED DETECTOR LOOPS ARE REQUIRED.



EXIST.	PROP.	DESCRIPTION	EXIST.	PROP.	DESCRIPTION
[Symbol]	[Symbol]	CONTROLLER CABINET	[Symbol]	[Symbol]	G.S. CONDUIT IN GROUND (CIG), IN TRENCH (T) OR PUSHED (P)
[Symbol]	[Symbol]	UNINTERRUPTIBLE POWER SUPPLY	[Symbol]	[Symbol]	PEDESTRIAN PUSHBUTTON DETECTOR
[Symbol]	[Symbol]	SERVICE INSTALLATION	[Symbol]	[Symbol]	DETECTION LOOP
[Symbol]	[Symbol]	SIGNAL HEAD	[Symbol]	[Symbol]	CAST IRON JUNCTION BOX
[Symbol]	[Symbol]	SIGNAL HEAD WITH BACKPLATE	[Symbol]	[Symbol]	EMERGENCY VEHICLE LIGHT DETECTOR
[Symbol]	[Symbol]	SIGNAL HEAD OPTICALLY PROGRAMMED	[Symbol]	[Symbol]	CONFIRMATION BEACON
[Symbol]	[Symbol]	SIGNAL HEAD, PEDESTRIAN	[Symbol]	[Symbol]	CONDUIT SPLICE
[Symbol]	[Symbol]	SIGNAL POST	[Symbol]	[Symbol]	WOOD POLE
[Symbol]	[Symbol]	MAST ARM ASSEMBLY AND POLE, STEEL	[Symbol]	[Symbol]	RACEWAY FOR MAGNETIC DETECTOR, TYPE I/TYPE II
[Symbol]	[Symbol]	MAST ARM ASSEMBLY AND POLE, ALUMINUM	[Symbol]	[Symbol]	VEHICLE DETECTOR, NON-COMPENSATED MAGNETIC TYPE
[Symbol]	[Symbol]	COMBINATION MAST ARM ASSEMBLY AND POLE, STEEL WITH LUMINAIRE	[Symbol]	[Symbol]	RAILROAD CONTROL CABINET
[Symbol]	[Symbol]	UNIT DUCT	[Symbol]	[Symbol]	TELEPHONE INSTALLATION
[Symbol]	[Symbol]	COMMON TRENCH	[Symbol]	[Symbol]	ILLUMINATED SIGN "NO LEFT TURN"
[Symbol]	[Symbol]	HANDHOLE	[Symbol]	[Symbol]	ILLUMINATED SIGN "NO RIGHT TURN"
[Symbol]	[Symbol]	DOUBLE HANDHOLE			
[Symbol]	[Symbol]	HEAVY DUTY HANDHOLE			

REFER TO TS-08 FOR FAR OUT LOOP DETECTOR

SEE BRIDGE CROSSING DETAIL SHEET LT-17

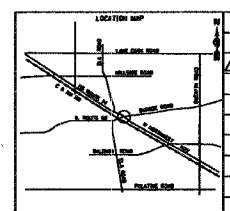
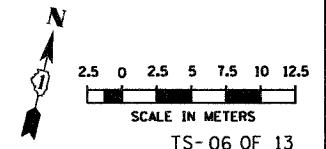
PROPOSED LOCAL CONTROLLER WITH TRANSCIVER & UPS UNIT.

ComEd SERVICE INSTALLATION

PREFORMED LOOP DETECTOR 1.8M x 1.8M PROPOSED INTERSECTION AND SAMPLING (SYSTEM) DETECTORS

PROPOSED INTERCONNECT TO ELA ROAD

Rick Johns
 District of
 Cook County
 11/15/2007
 11:10:37 PM
 250.0000 W / M.
 Files: 85148E-TS-06 - Plan - West.dgn



NAME	DATE
ADDENDUM 2	02/15/07

ILLINOIS DEPARTMENT OF TRANSPORTATION
 ILLINOIS ROUTE 68 AT U.S. ROUTE 14
 RAMPS A & B
 PROPOSED TRAFFIC SIGNAL PLAN

SCALE 1:250
 DATE NOVEMBER 2006

DRAWN BY R.P.J.
 DESIGNED BY I.B.
 CHECKED BY A.D.O.