

F.A.P. RTE.	SECTION	COUNTY	TOTAL SHEETS	SHEET NO.
343	*	COOK	283	121C
STA.		TO STA.		
FED. ROAD DIST. NO. 1		ILLINOIS FED. AID PROJECT		
		* 70D-Y-R & 70HB-R-1		62897

**RESTORATION OF WORK AREA**

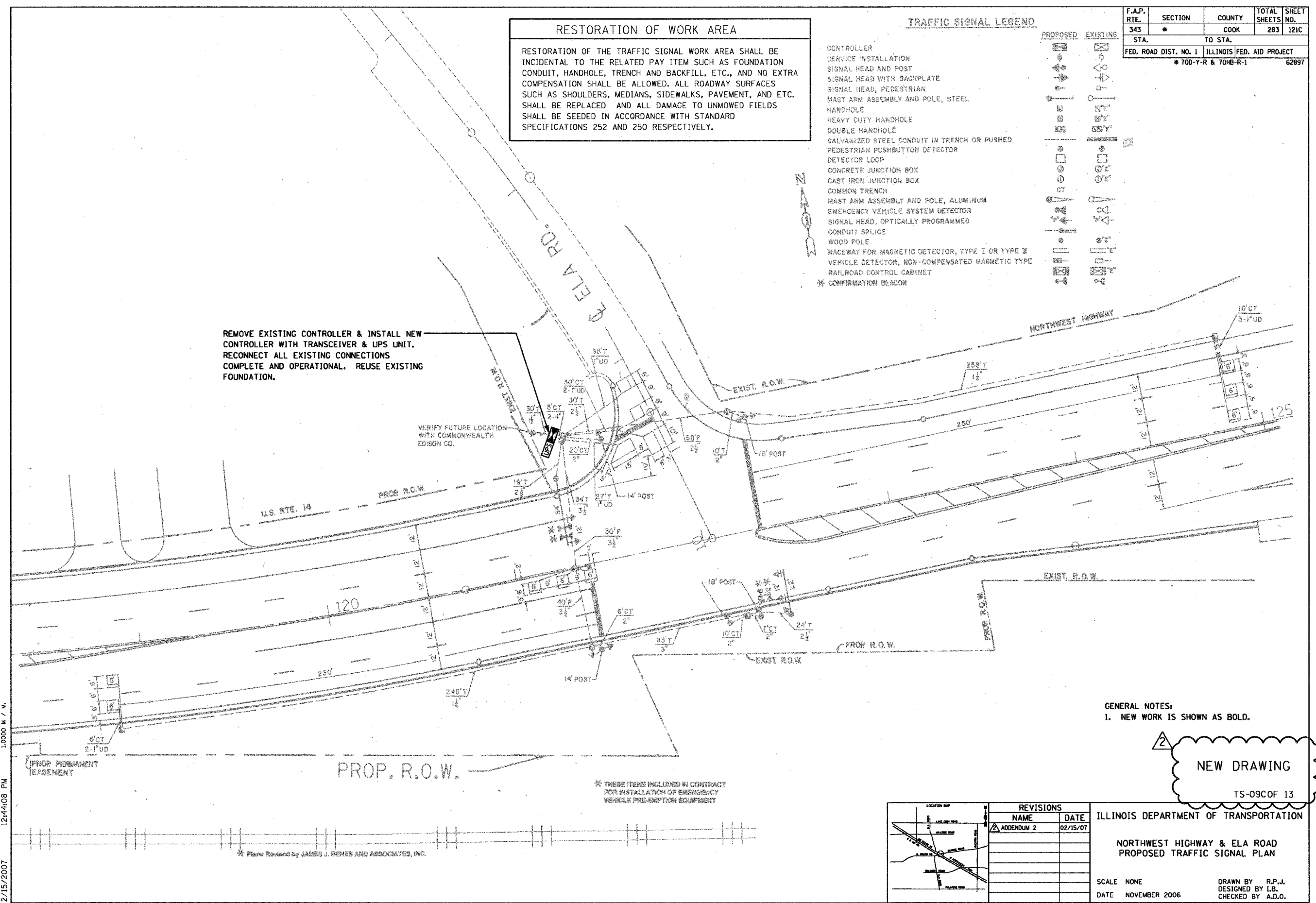
RESTORATION OF THE TRAFFIC SIGNAL WORK AREA SHALL BE INCIDENTAL TO THE RELATED PAY ITEM SUCH AS FOUNDATION CONDUIT, HANDHOLE, TRENCH AND BACKFILL, ETC., AND NO EXTRA COMPENSATION SHALL BE ALLOWED. ALL ROADWAY SURFACES SUCH AS SHOULDERS, MEDIANS, SIDEWALKS, PAVEMENT, AND ETC. SHALL BE REPLACED AND ALL DAMAGE TO UNMOWED FIELDS SHALL BE SEED IN ACCORDANCE WITH STANDARD SPECIFICATIONS 252 AND 250 RESPECTIVELY.

**TRAFFIC SIGNAL LEGEND**

- |  |          |          |
|--|----------|----------|
|  | PROPOSED | EXISTING |
| CONTROLLER                                       |          |          |
| SERVICE INSTALLATION                             |          |          |
| SIGNAL HEAD AND POST                             |          |          |
| SIGNAL HEAD WITH BACKPLATE                       |          |          |
| SIGNAL HEAD, PEDESTRIAN                          |          |          |
| MAST ARM ASSEMBLY AND POLE, STEEL                |          |          |
| HANDHOLE   |          |          |
| HEAVY DUTY HANDHOLE                              |          |          |
| DOUBLE HANDHOLE                                  |          |          |
| GALVANIZED STEEL CONDUIT IN TRENCH OR PUSHED     |          |          |
| PEDESTRIAN PUSHBUTTON DETECTOR                   |          |          |
| DETECTOR LOOP                                    |          |          |
| CONCRETE JUNCTION BOX                            |          |          |
| CAST IRON JUNCTION BOX                           |          |          |
| COMMON TRENCH                                    |          |          |
| MAST ARM ASSEMBLY AND POLE, ALUMINUM             |          |          |
| EMERGENCY VEHICLE SYSTEM DETECTOR                |          |          |
| SIGNAL HEAD, OPTICALLY PROGRAMMED                |          |          |
| CONDUIT SPLICE                                   |          |          |
| WOOD POLE  |          |          |
| RACEWAY FOR MAGNETIC DETECTOR, TYPE I OR TYPE II |          |          |
| VEHICLE DETECTOR, NON-COMPENSATED MAGNETIC TYPE  |          |          |
| RAILROAD CONTROL CABINET                         |          |          |
| * CONFIRMATION BEACON                            |          |          |

REMOVE EXISTING CONTROLLER & INSTALL NEW CONTROLLER WITH TRANSCEIVER & UPS UNIT. RECONNECT ALL EXISTING CONNECTIONS COMPLETE AND OPERATIONAL. REUSE EXISTING FOUNDATION.

VERIFY FUTURE LOCATION WITH COMMONWEALTH EDISON CO.

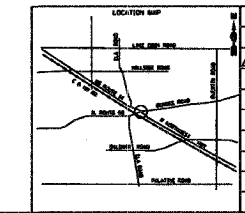


GENERAL NOTES:  
1. NEW WORK IS SHOWN AS BOLD.

**NEW DRAWING**  
TS-09C OF 13

\* THESE ITEMS INCLUDED IN CONTRACT FOR INSTALLATION OF EMERGENCY VEHICLE PRE-EMPTION EQUIPMENT

\* Plans Revised by JAMES J. REMES AND ASSOCIATES, INC.



REVISIONS	
NAME	DATE
ADDENDUM 2	02/15/07

ILLINOIS DEPARTMENT OF TRANSPORTATION  
NORTHWEST HIGHWAY & ELA ROAD  
PROPOSED TRAFFIC SIGNAL PLAN  
SCALE NONE  
DATE NOVEMBER 2006  
DRAWN BY R.P.J.  
DESIGNED BY I.B.  
CHECKED BY A.D.O.

Rick Johns  
 02/15/2007 11:48 AM  
 P:\061913.000 - IL 68 over US 14\Working Files\Drawing Files\TS-09C - NW HWY & Ela Road.dgn  
 12:44:08 PM  
 1:0000 M / M  
 2/15/2007