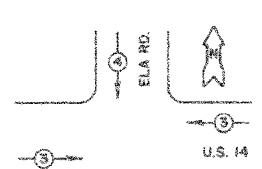


**SCHEDULE OF QUANTITIES**

QUANTITY	UNIT	ITEM
11	SQ FT	SIGN PANEL - TYPE 1
4	EACH	SIGNAL HEAD, ALUMINUM, 1-PACK, 3-SECTION, BRACKET MOUNTED
3	EACH	SIGNAL HEAD, ALUMINUM, 1-PACK, 3-SECTION, MAST ARM MOUNTED
1	EACH	SIGNAL HEAD, ALUMINUM, 1-PACK, 5-SECTION, MAST ARM MOUNTED
1	EACH	SIGNAL HEAD, ALUMINUM, 2-PACK, 3-SECTION, BRACKET MOUNTED
1	EACH	SIGNAL HEAD, ALUMINUM, 2-PACK, 1-3 SECTION, 1-5 SECTION, BRACKET MOUNTED
4	EACH	TRAFFIC SIGNAL BACKPLATE, LOUVERED
1	EACH	TRAFFIC SIGNAL POST, FERROUS 14 FT.
2	EACH	TRAFFIC SIGNAL POST, FERROUS 18 FT.
1	EACH	STEEL MAST ARM ASSEMBLY AND POLE, 22 FT.
1	EACH	STEEL MAST ARM ASSEMBLY AND POLE, 34 FT.
1	EACH	FULL-ACTUATED CONTROLLER, STANDARD SKETCH 11, 3 PHASES, IN TYPE IV CABINET
4	EACH	INDUCTION LOOP DETECTOR AMPLIFIER
428	LIN FT	DETECTOR LOOP
503	LIN FT	GALVANIZED STEEL CONDUIT IN TRENCH 1 1/4"
20	LIN FT	GALVANIZED STEEL CONDUIT IN TRENCH 1 1/2"
53	LIN FT	GALVANIZED STEEL CONDUIT IN TRENCH 2"
73	LIN FT	GALVANIZED STEEL CONDUIT IN TRENCH 2 1/2"
83	LIN FT	GALVANIZED STEEL CONDUIT IN TRENCH 3"
104	LIN FT	GALVANIZED STEEL CONDUIT IN TRENCH 3 1/2"
10	LIN FT	GALVANIZED STEEL CONDUIT IN TRENCH 4"
58	LIN FT	GALVANIZED STEEL CONDUIT, PUSHD 2 1/2"
70	LIN FT	GALVANIZED STEEL CONDUIT, PUSHD 3 1/2"
164	LIN FT	UNIT DUCT, WITHOUT CABLE, IN TRENCH 1"
31	LIN FT	ELECTRIC CABLE IN CONDUIT NO. 4 2/C
1581	LIN FT	ELECTRIC CABLE IN CONDUIT NO. 14 5/C
393	LIN FT	ELECTRIC CABLE IN CONDUIT NO. 14 7/C
867	LIN FT	ELECTRIC CABLE IN CONDUIT NO. 14 2/C TWISTED, SHIELDED
1	EACH	SERVICE INSTALLATION, TYPE C
15	LIN FT	CONCRETE FOUNDATION, TYPE A
3.5	LIN FT	CONCRETE FOUNDATION, TYPE D
104	LIN FT	CONCRETE FOUNDATION, TYPE K 24-INCH DIAMETER
15	LIN FT	CONCRETE FOUNDATION, TYPE R 30-INCH DIAMETER
5	EACH	CONCRETE HANDHOLE
1	EACH	CONCRETE HEAVY-DUTY HANDHOLE
1	EACH	CONCRETE DOUBLE HANDHOLE
882	LIN FT	TRENCH AND BACKFILL

\* EMERGENCY VEHICLE PREEMPTION SEQUENCE NOTES FOR DUAL ENTRY OPERATION - ALL LEADS



**EMERGENCY VEHICLE PREEMPTIONS**

EMERGENCY VEHICLE PREEMPTION	3	4
MOVEMENT	—	—

- NOTES:**
- ONCE PREEMPTION HAS BEEN CALLED, TERMINATION OF A PHASE(S) SHALL BE IDENTICAL TO THE NORMAL SEQUENCE OF OPERATIONS TERMINATION OF A PHASE(S) AS DESCRIBED IN STANDARD 85700.
  - CONTINUATION OR TERMINATION OF ALL RIGHT TURN OVERLAPS SHALL BE IDENTICAL TO THE NORMAL SEQUENCE OF OPERATIONS CONTINUATION OR TERMINATION OF RIGHT TURN OVERLAPS AS DESCRIBED IN THE CLEARANCE NOTES FOR RIGHT TURN OVERLAPS.
  - TERMINATION OF ALL PEDESTRIAN PHASE(S) SHALL INCLUDE A FULL FLASHING "DON'T WALK" INTERVAL.
  - IF ALL RED CLEARANCE IS USED IN THE NORMAL SEQUENCE OF OPERATION, IT MUST BE DISPLAYED AFTER THE YELLOW CLEARANCE INTERVAL, WHEN ENTERING OR LEAVING THE PREEMPTION SEQUENCE.

**TRAFFIC SIGNALS QUANTITIES**

ITEM	UNIT	ELA RD & US 14
FULL-ACTUATED CONTROLLER AND TYPE V CABINET	EACH	1
TRANSCIVER - FIBER OPTIC	EACH	1
MAINTENANCE OF EXISTING TRAFFIC SIGNAL INSTALLATION	EACH	1
REMOVE EXISTING TRAFFIC SIGNAL EQUIPMENT	EACH	1

THE FOLLOWING EXISTING TRAFFIC SIGNAL EQUIPMENT SHALL BE REMOVED BY THE CONTRACTOR, SHALL REMAIN THE PROPERTY OF THE STATE AND SHALL BE DELIVERED BY THE CONTRACTOR TO THE STATE'S TRAFFIC SIGNAL MAINTENANCE CONTRACTOR'S MAIN FACILITY AS PER THE TRAFFIC SIGNAL SPECIFICATIONS.

1 EACH CONTROLLER AND CABINET (COMPLETE)

**SCHEDULE OF QUANTITIES**  
 U.S. ROUTE 14/ELA ROAD

ITEM	UNIT	QUANTITY
TRAFFIC CONTROL AND PROTECTION	FOOT	348
ELECTRIC CABLE IN CONDUIT, SIGNAL NO. 14 2/C	FOOT	246
ELECTRIC CABLE IN CONDUIT NO. 20 3/C TWISTED, SHIELDED	EACH	1
MAINTENANCE OF EXISTING TRAFFIC SIGNAL INSTALLATION	EACH	2
LIGHT DETECTOR	EACH	1
LIGHT DETECTOR AMPLIFIER	EACH	1

\* EXISTING CONTROL EQUIPMENT AT THIS LOCATION IS ECONOMITE ASCB600

\* NOTE:  
 THE PAY ITEM "TRAFFIC CONTROL AND PROTECTION" APPEARS IN THE SCHEDULE OF QUANTITIES FOR EACH INTERSECTION INCLUDED IN THIS PROJECT. IT SHALL BE PAID FOR AS A LUMP SUM ONCE, FOR THE ENTIRE PROJECT.

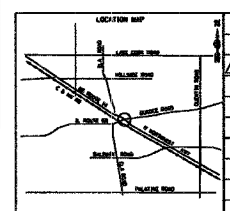
**GENERAL NOTES:**  
 1. NEW WORK IS SHOWN AS BOLD.

**NEW DRAWING**  
 TS-09D OF 13

**I.D.O.T. TRAFFIC SIGNAL INSTALLATION ELECTRICAL SERVICE REQUIREMENTS**

TYPE	NO. OF LAMPS	WATTAGE		% OPERATION	TOTAL WATTAGE
		INCAND.	L.E.D.		
SIGNAL (RED)	11	135	17	0.50	93.5
(YELLOW)	11	135	25	0.25	68.75
(GREEN)	11	135	15	0.25	41.25
ARROW	11	135	12	0.10	4.8
PED. SIGNAL	-	90	25	1.00	-
CONTROLLER	1	100	100	1.00	100
ILLUM. SIGN	-	252	-	0.05	-
FLASHER	-	-	-	0.50	-
<b>TOTAL</b>					<b>308.3</b>

\* THESE ITEMS INCLUDED IN CONTRACT FOR INSTALLATION OF EMERGENCY VEHICLE PRE-EMPTION EQUIPMENT



**REVISIONS**

NAME	DATE
ADDENDUM 2	02/15/07

**ILLINOIS DEPARTMENT OF TRANSPORTATION**  
 NORTHWEST HIGHWAY & ELA ROAD  
 SCHEDULE OF QUANTITIES, CABLE PLAN AND PHASE DESIGNATION DIAGRAM

SCALE NONE  
 DATE NOVEMBER 2006  
 DRAWN BY R.P.J.  
 DESIGNED BY I.B.  
 CHECKED BY A.D.O.

Rick Johns - District Chief  
 000191910 over US 14  
 02/15/2007 12:45:05 PM 1.0000 M / M.  
 P:\06191000 L L 68 over US 14  
 2/15/2007