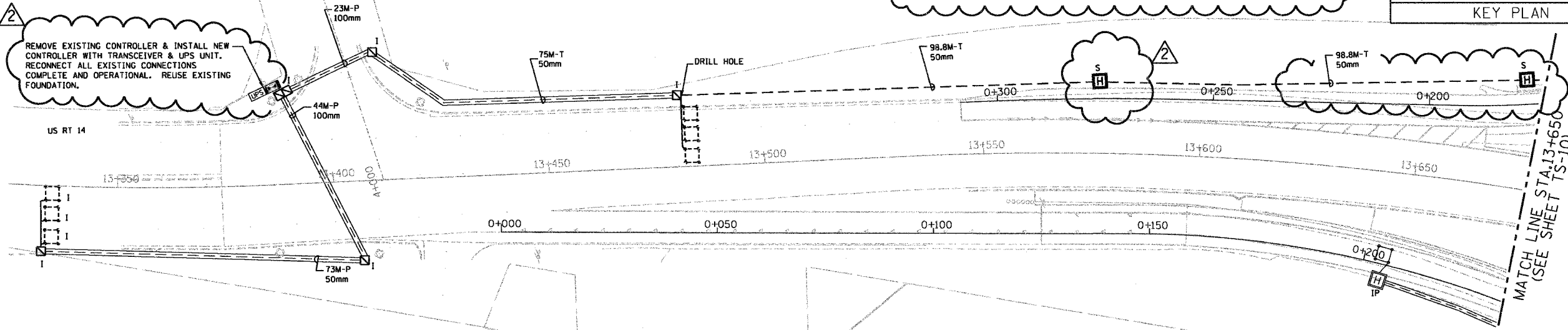


F.A.P. RTE.	SECTION	COUNTY	TOTAL SHEETS	SHEET NO.
343	*	COOK	283	123
STA.	TO STA.			
FED. ROAD DIST. NO. 1	ILLINOIS FED. AID PROJECT		62897	
* 70D-Y-R & 70HB-R-1				

KEY PLAN

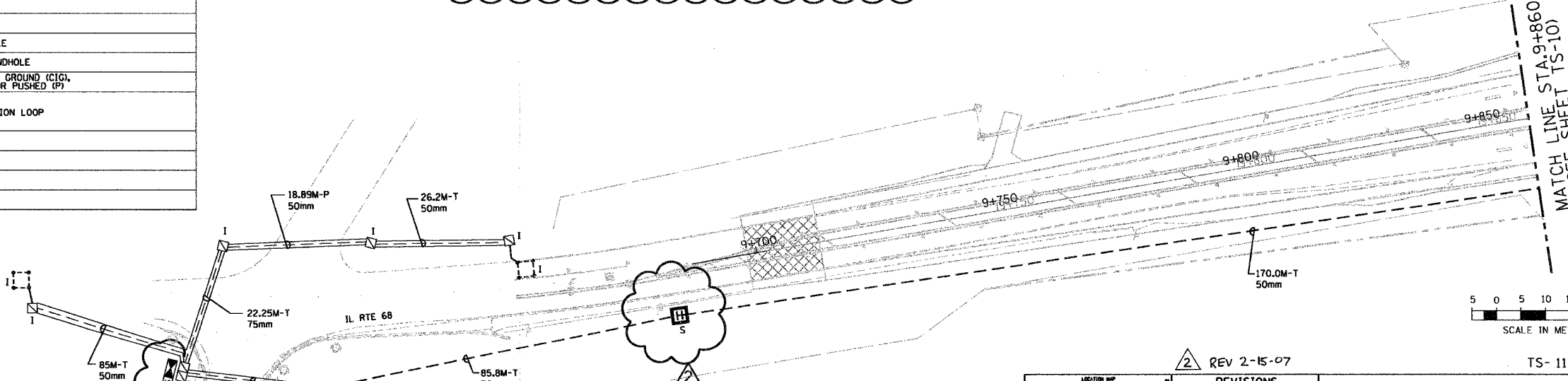
**RESTORATION OF WORK AREA**

RESTORATION OF THE TRAFFIC SIGNAL WORK AREA SHALL BE INCIDENTAL TO THE RELATED PAY ITEM SUCH AS FOUNDATION CONDUIT, HANDHOLE, TRENCH AND BACKFILL, ETC., AND NO EXTRA COMPENSATION SHALL BE ALLOWED. ALL ROADWAY SURFACES SUCH AS SHOULDERS, MEDIANS, SIDEWALKS, PAVEMENT, AND ETC. SHALL BE REPLACED AND ALL DAMAGE TO UNMOWED FIELDS SHALL BE SEED IN ACCORDANCE WITH STANDARD SPECIFICATIONS 252 AND 250 RESPECTIVELY.

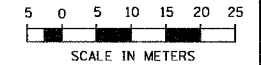


**1 INTERCONNECT PLAN**  
**ELA ROAD AT U.S. RTE. 14**  
 SCALE: 1 : 500

EXIST.	PROP.	DESCRIPTION
		CONTROLLER
		HANDHOLE
		DOUBLE HANDHOLE
		HEAVY DUTY HANDHOLE
		G.S. CONDUIT IN GROUND (CIG) IN TRENCH (T) OR PUSHED (P)
		VEHICLE DETECTION LOOP
		UD UNIT DUCT
		S SYSTEM
		I JP INTERSECTION
		J JUNCTION BOX

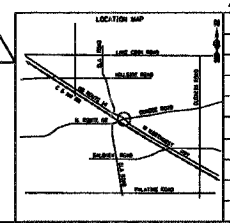


**2 INTERCONNECT PLAN**  
**ELA ROAD AT ILL. RTE. 68**  
 SCALE: 1 : 500



REV 2-15-07

TS- 11 OF 13



REVISIONS	
NAME	DATE

ILLINOIS DEPARTMENT OF TRANSPORTATION

**ILL. RTE. 68 FROM ELA ROAD TO U.S. RTE. 14 RAMPS C & D INTERCONNECT PLAN**

SCALE 1:500  
 DATE NOVEMBER 2006

DRAWN BY R.P.J.  
 DESIGNED BY I.B.  
 CHECKED BY A.D.O.

Rick Johns  
 1001... District 01  
 68... US 14  
 68... IL 68  
 08/09/2006  
 2/15/2007  
 12:45:51 PM  
 500.0000 M / M.  
 Cable Interconnect: Plan.dgn