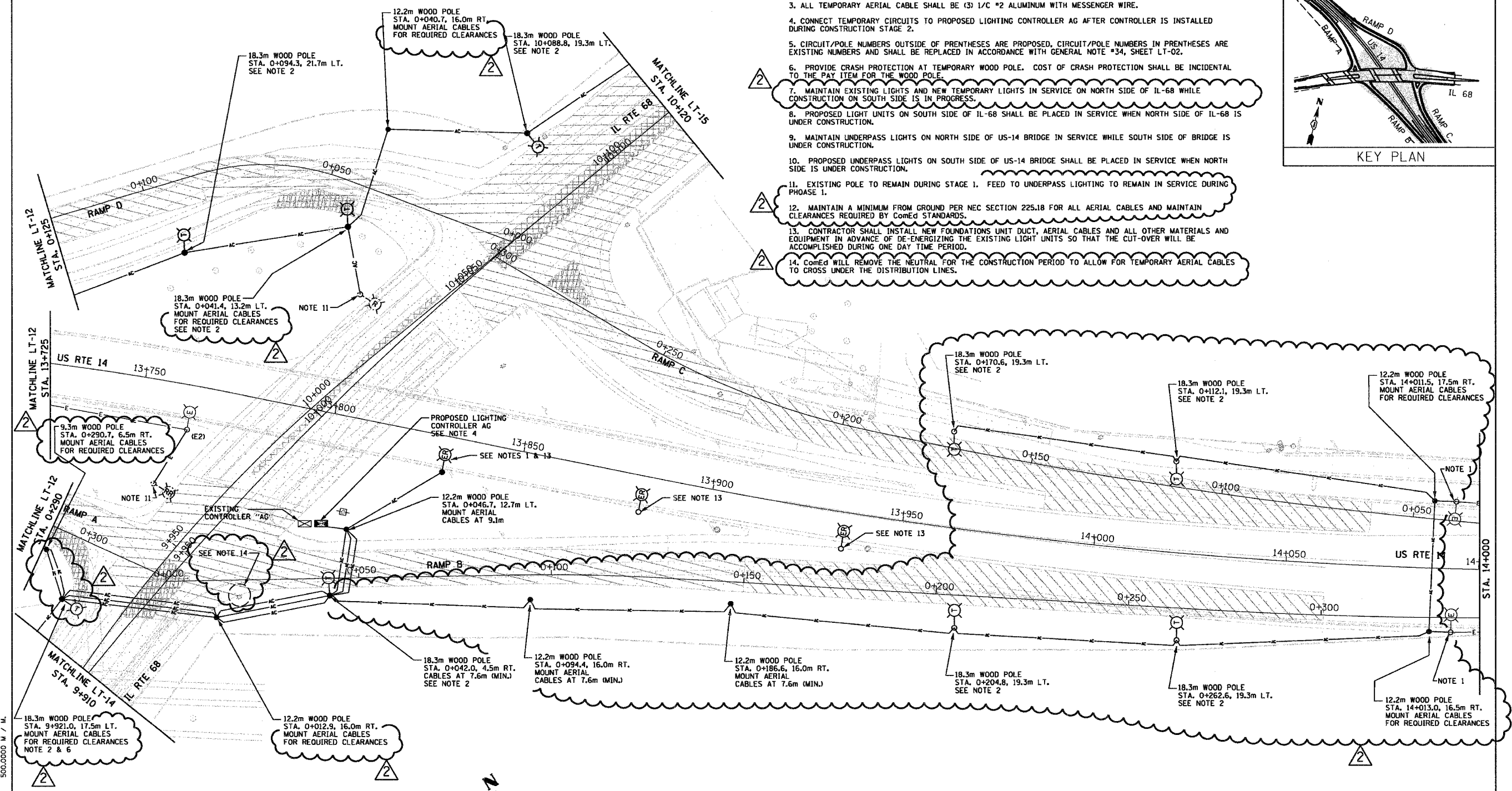


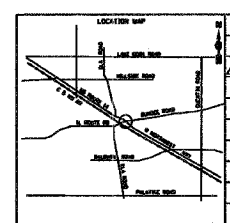
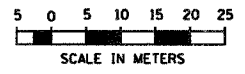
F.A.P. RIE.	SECTION	COUNTY	TOTAL SHEETS	SHEET NO.
343	*	COOK	283	138
STA.		TO STA.		
FED. ROAD DIST. NO. 1		ILLINOIS FED. AID PROJECT		
* 700-Y-R & 70HB-R-1		62897		

KEY PLAN

- NOTES:
1. SECURE AERIAL CABLE ATTACHMENT TO POLE WITH A POLE BAND. INSERT CONDUCTORS THROUGH THE 38mm GROMMETED HOLE IN THE TOP PORTION OF THE SHAFT.
  2. WITH 4.5M MAST ARM. MOUNT TEMPORARY LUMINAIRE 14.5M ABOVE ROADWAY.
  3. ALL TEMPORARY AERIAL CABLE SHALL BE (3) 1/C #2 ALUMINUM WITH MESSENGER WIRE.
  4. CONNECT TEMPORARY CIRCUITS TO PROPOSED LIGHTING CONTROLLER AG AFTER CONTROLLER IS INSTALLED DURING CONSTRUCTION STAGE 2.
  5. CIRCUIT/POLE NUMBERS OUTSIDE OF PRENTHESES ARE PROPOSED, CIRCUIT/POLE NUMBERS IN PRENTHESES ARE EXISTING NUMBERS AND SHALL BE REPLACED IN ACCORDANCE WITH GENERAL NOTE #34, SHEET LT-02.
  6. PROVIDE CRASH PROTECTION AT TEMPORARY WOOD POLE. COST OF CRASH PROTECTION SHALL BE INCIDENTAL TO THE PAY ITEM FOR THE WOOD POLE.
  7. MAINTAIN EXISTING LIGHTS AND NEW TEMPORARY LIGHTS IN SERVICE ON NORTH SIDE OF IL-68 WHILE CONSTRUCTION ON SOUTH SIDE IS IN PROGRESS.
  8. PROPOSED LIGHT UNITS ON SOUTH SIDE OF IL-68 SHALL BE PLACED IN SERVICE WHEN NORTH SIDE OF IL-68 IS UNDER CONSTRUCTION.
  9. MAINTAIN UNDERPASS LIGHTS ON NORTH SIDE OF US-14 BRIDGE IN SERVICE WHILE SOUTH SIDE OF BRIDGE IS UNDER CONSTRUCTION.
  10. PROPOSED UNDERPASS LIGHTS ON SOUTH SIDE OF US-14 BRIDGE SHALL BE PLACED IN SERVICE WHEN NORTH SIDE IS UNDER CONSTRUCTION.
  11. EXISTING POLE TO REMAIN DURING STAGE 1. FEED TO UNDERPASS LIGHTING TO REMAIN IN SERVICE DURING PHOASE 1.
  12. MAINTAIN A MINIMUM FROM GROUND PER NEC SECTION 225.18 FOR ALL AERIAL CABLES AND MAINTAIN CLEARANCES REQUIRED BY ComEd STANDARDS.
  13. CONTRACTOR SHALL INSTALL NEW FOUNDATIONS UNIT DUCT, AERIAL CABLES AND ALL OTHER MATERIALS AND EQUIPMENT IN ADVANCE OF DE-ENERGIZING THE EXISTING LIGHT UNITS SO THAT THE CUT-OVER WILL BE ACCOMPLISHED DURING ONE DAY TIME PERIOD.
  14. COMED WILL REMOVE THE NEUTRAL FOR THE CONSTRUCTION PERIOD TO ALLOW FOR TEMPORARY AERIAL CABLES TO CROSS UNDER THE DISTRIBUTION LINES.



1 ROADWAY TEMPORARY LIGHTING PLAN  
SCALE: 1 : 500



REVISIONS	
NAME	DATE
ADDENDUM 2	02/15/07

ILLINOIS DEPARTMENT OF TRANSPORTATION  
ILLINOIS ROUTE 68 AT U.S. ROUTE 14  
ROADWAY TEMPORARY LIGHTING PLAN  
IL 68 STA. 9+910 TO STA. 10+120  
US 14 STA. 13+725 TO STA. 14+100  
SCALE 1:500  
DATE NOVEMBER 2006  
DRAWN BY R.P.J.  
DESIGNED BY I.B.  
CHECKED BY A.D.O.

Rick Johns  
 06/19/06  
 P:\0619000 - IL 68 over US 14\Working Files\Shi\8E-LT-13 - Temporary LT.dgn  
 9:31:26 AM  
 500.0000 M / M.  
 2/14/2007