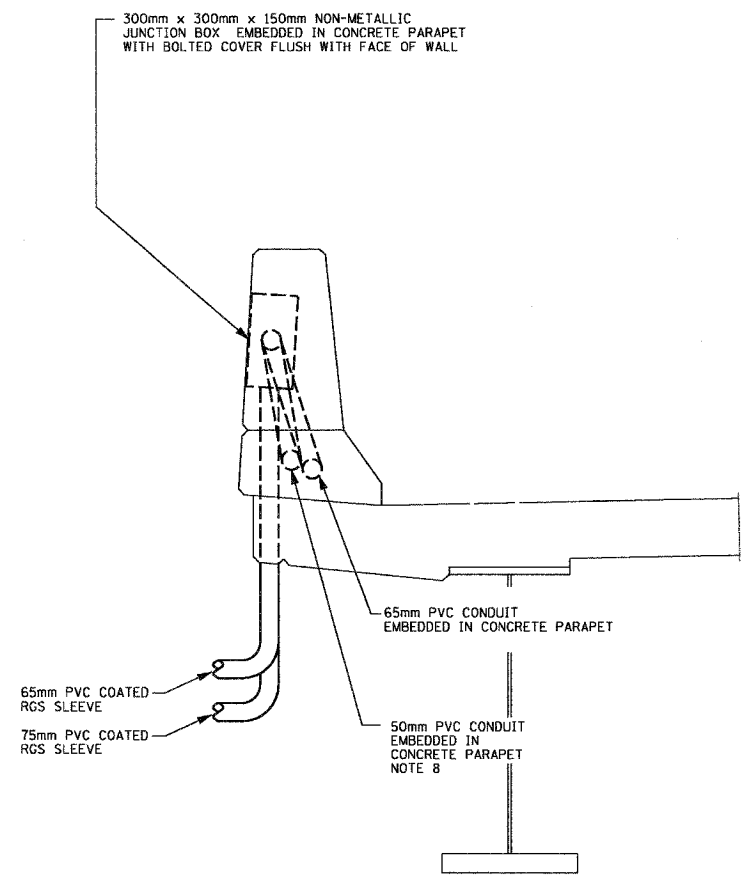


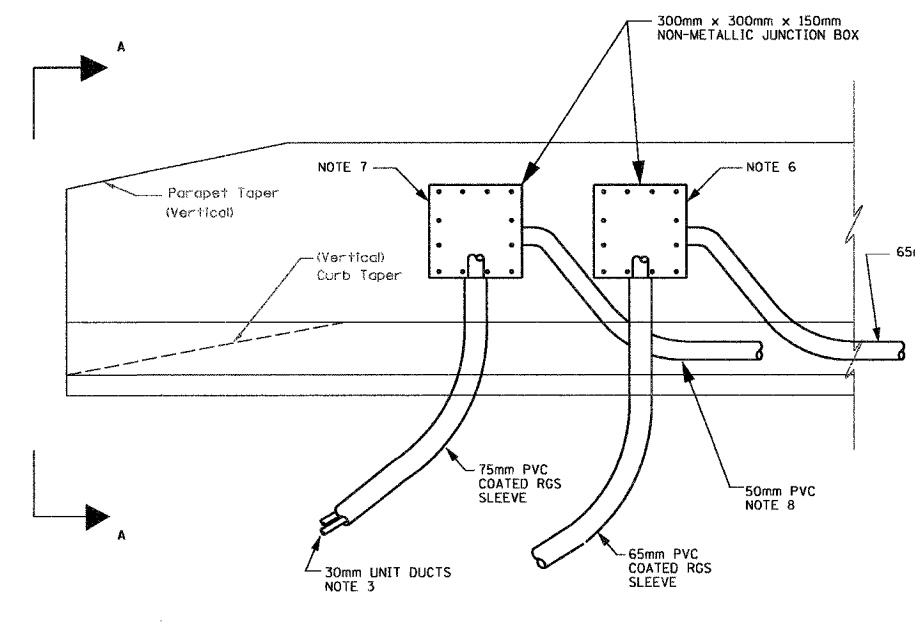
F.A.P. RTE.	SECTION	COUNTY	TOTAL SHEETS	SHEET NO.
343	*	COOK	283	142
STA.		TO STA.		
FED. ROAD DIST. NO. 1		ILLINOIS FED. AID PROJECT		
* 700-Y-R & 704B-R-1		62897		

KEY PLAN



1 SECTION A-A THRU PARAPET
SCALE: N.T.S.

- NOTES
- 50mm EMBEDDED PVC CONDUITS SHALL BE PLACED IN THE LOWER CURBED PORTION OF THE PARAPET.
 - COORDINATE WITH OTHER TRADES TO MAINTAIN 5mm CLEARANCE FROM ALL REINFORCEMENTS.
 - FOR US RTE 14 BRIDGE; 2-UNIT DUCTS EACH WITH 3-1/C NO. 4 AND 1-1/C NO. 6 GRD. 600V TYPE RHH/RHW/EPR LIGHTING CONDUCTORS. FOR UPRR BRIDGE; 1-UNIT DUCTS WITH 3-1/C NO. 4 AND 1-1/C NO. 6 GRD. 600V TYPE RHH/RHW/EPR LIGHTING CONDUCTORS.
 - UNIT DUCT WITH TRAFFIC SIGNAL FIBER OPTIC CABLES. REFER TO SHEETS TS-12 AND TS-13.
 - PROVIDE EXPANTION / DEFLECTION CONDUIT COUPLINGS AT EACH PARAPET EXPANTION JOINT.
 - JUNCTION BOX FOR TRAFFIC SIGNALS EMBEDDED IN PARAPET WALL.
 - JUNCTION BOX FOR ELECTRIC EMBEDDED IN PARAPET WALL.
 - 50 mm WITH 6-1/C*4 AND 2-1/C*6 GROUNDS.
 - REFER TO STRUCTURAL PLANS FOR LOCATION OF JUNCTION BOXES.



2 BRIDGE END ELEVATION
SCALE: N.T.S.

Rick Johns
 DOT - District 01
 IL 68 over US 14
 9/15/09
 2/14/2007

LOCATION MAP	REVISIONS		ILLINOIS DEPARTMENT OF TRANSPORTATION ILLINOIS ROUTE 68 AT U.S. ROUTE 14 ROADWAY LIGHTING BRIDGE CROSSING DETAILS
	NAME	DATE	
	ADDENDUM 2	02/15/07	SCALE NONE DATE NOVEMBER 2006