

F.A.P. RTE. NO.	SECTION	COUNTY	TOTAL SHEETS	SHEET NO.
343	70D-Y-B-R	COOK	283	155
STA.		TO STA.		
FED. ROAD DIST. NO.		ILLINOIS FED. AID PROJECT		
CONTRACT NO. 62897				

**BENCH MARK**

Chiseled "X" NW Corner of West Abutment of IL-68 bridge over UPRR Elev. 269.746

**EXISTING STRUCTURE**

S.N. 016-0523 was built in 1931. The structure was widened, raised, and the superstructure replaced in 1967. In 1994, bituminous overlay was added. The three span structure rests on spread footings at the closed abutments and spread footings at the multi-column piers. The superstructure consists of 690mm deep concrete deck beams with 75mm of overlay. The concrete parapets have steel railings with a fence on the northside. The back to back abutment length is 42.52m and the deck is 23.16m out to out.

During construction of the new structure, staged construction will be utilized to maintain one lane of traffic in each direction.

No salvage.

**NOTES:**

- All dimensions in millimeters (mm) except as noted.
- No free fall deck drains will be permitted in the span over the tracks or within 3m of cross arms of a railroad pole line.
- The width between the guardrails shall be the width between the bridge rails or parapets which will require approach shoulder widening.

STATION 9+900.324  
BUILT 20\_\_ BY  
STATE OF ILLINOIS  
F.A.P. RT. 343 SEC 70D-Y-B-R  
COOK COUNTY  
LOADING HS20  
STR. NO. 016-2732

**NAME PLATE**  
See Std. 515001

**LOADING HS20-44**

Allow 2.4 kN/m<sup>2</sup> future wearing surface

**DESIGN SPECIFICATION**

2002 AASHTO Std. Spec. 17th edition

**DESIGN STRESSES**

**NEW CONSTRUCTION**

**FIELD UNITS**

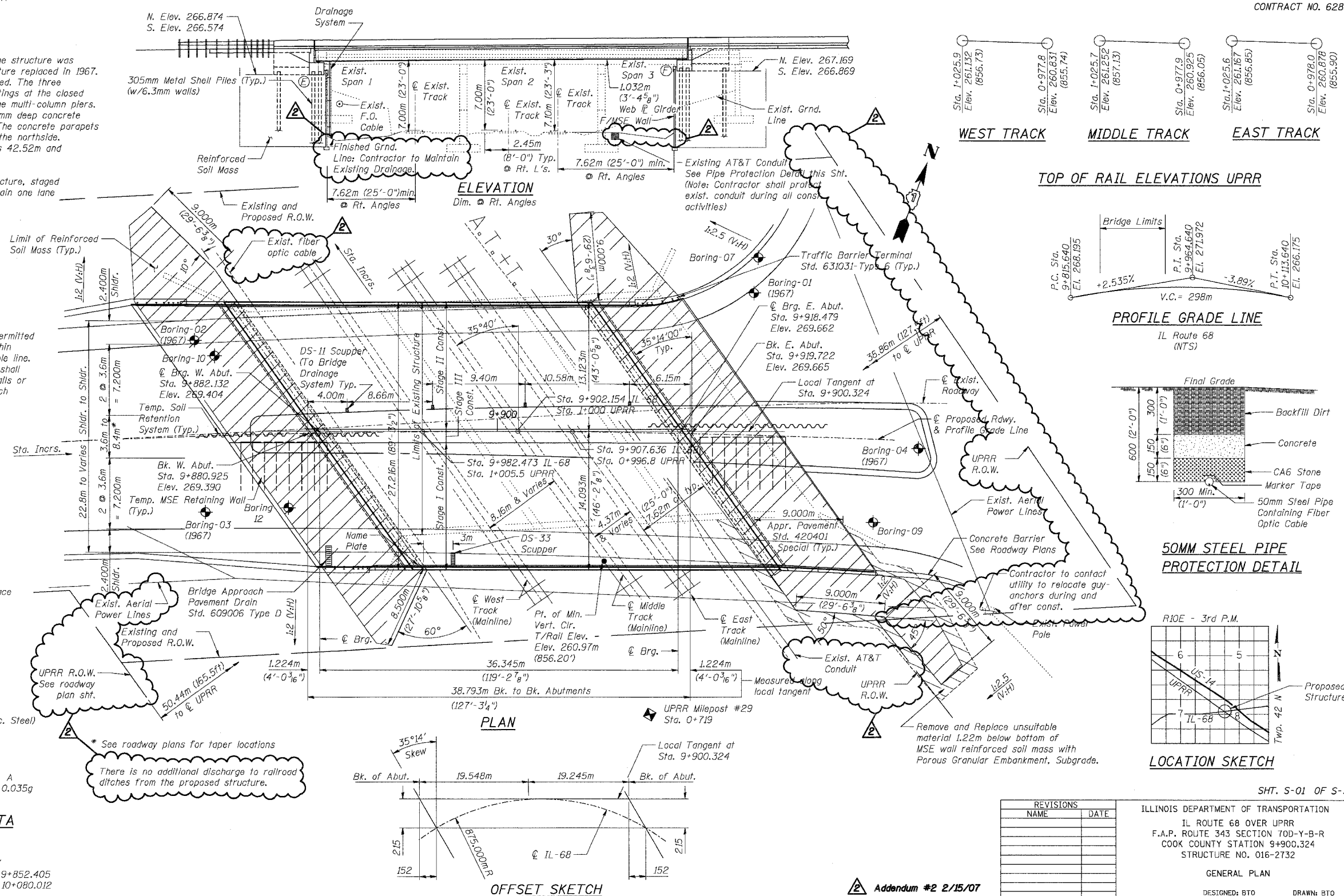
f'<sub>c</sub> = 24 MPa (concrete)  
f<sub>y</sub> = 345 MPa (M270M, Gr. 345 Struc. Steel)  
f<sub>y</sub> = 400 MPa (reinforcement)

**SEISMIC DATA**

Seismic Performance Category (SPC) = A  
Bedrock Acceleration Coefficient (A) = 0.035g  
Site Coefficient (S) = 1.0

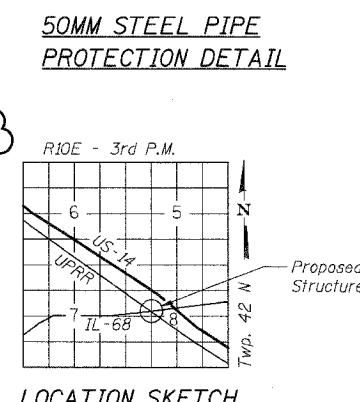
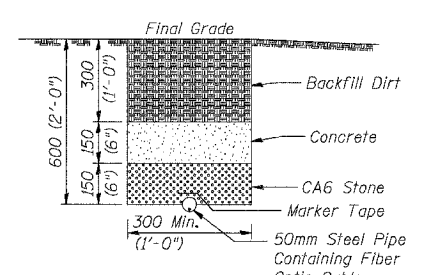
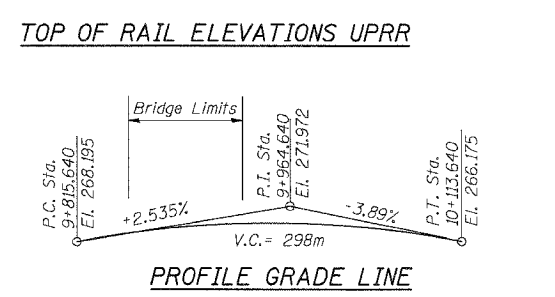
**HORIZONTAL CURVE DATA**

Curve 68-1  
PI Sta. = 9+966.854 E = 7.453m  
L = 14°54'14" RT. S.E. = 2.4%  
R = 875.000m P.C. Sta. = 9+852.405  
T = 114.450m P.T. Sta. = 10+080.012  
L = 227.607m



**TOP OF RAIL ELEVATIONS UPRR**

Sta. 1+025.9	Sta. 0+977.8	Sta. 1+025.7	Sta. 0+977.9	Sta. 1+025.6	Sta. 0+978.0
Elev. 261.132 (856.73)	Elev. 260.637 (855.74)	Elev. 261.252 (857.13)	Elev. 260.925 (856.05)	Elev. 261.167 (856.85)	Elev. 260.876 (855.90)



**REVISIONS**

NAME	DATE

ILLINOIS DEPARTMENT OF TRANSPORTATION  
IL ROUTE 68 OVER UPRR  
F.A.P. ROUTE 343 SECTION 70D-Y-B-R  
COOK COUNTY STATION 9+900.324  
STRUCTURE NO. 016-2732

**GENERAL PLAN**  
DESIGNED: BTO DRAWN: BTO  
DATE: 02/07 CHECKED: JAN CHECKED: JAN

Addendum #2 2/15/07